

# Rangely Weber Sand Unit

## Union Pacific 70-32 Proposed P&A Wellbore

Well Details:	
STATE & CO	CO - Rio Blanco
TWNS & RNG	2N & 102W
SECTION	32
API	05-103-05553
CHEVNO	

Casing Details:	
Type	Depth
KB	5297
24" 48#	0-71', 9 cu. yd.
16" 62.58#	0-520', 750 sxs cmt
10 3/4" 45.5#	0-3812', 550 sxs cmt
7" 23#	3750'-4185', 110 sxs cmt
Top Perf	3837
Bot Perf	3847
PBTD	4150
TD	9360

Formation	Top Depth
Mancos	0
Niobrara	1730
Frontier	2620
Mowry	2885
Dakota	2986
Morrison	3112
Curtis	3780
Entrada	3836
Carmel	3930
Navejo	4047
Chinle	4650
Shinarump	4770
Moenkopi	4840
Weber	5500
Morgan	6650
Madison	8092
Devonian - Chaffee	8756
Lower Ordovician	8950
Upper Cambrian	9130
Sawatch	9303

KB 5267

24" 48#  
0-71', 9 cu. yd.

16" 62.58#  
0-520', 750 sxs cmt

10 3/4" 45.5#  
0-3812', 550 sxs cmt

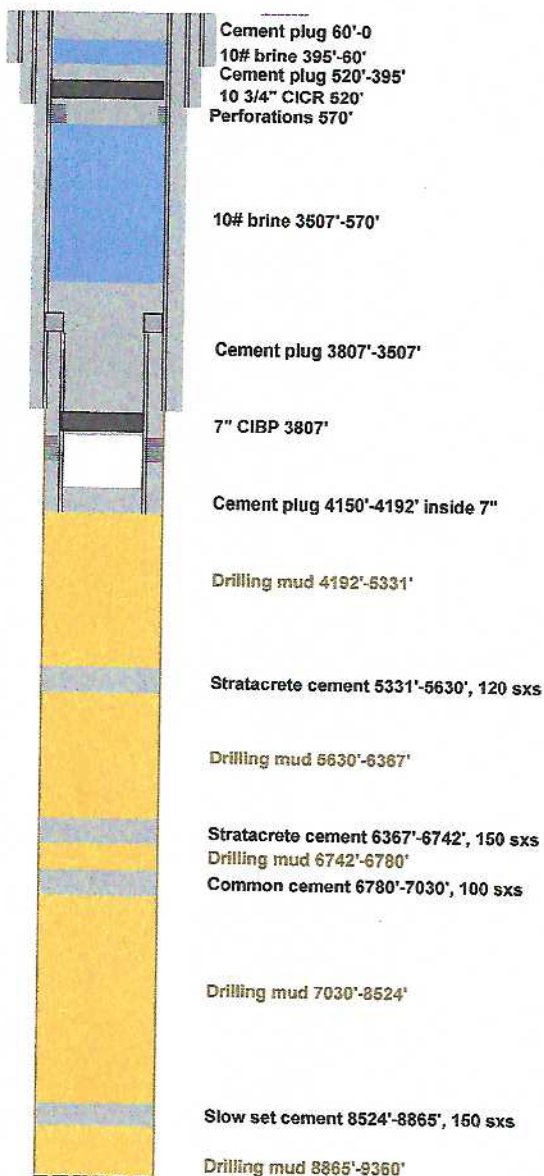
7" 23#  
3750'-4185', 110 sxs cmt

Top perf 3837'  
Bottom perf 3847'

PBTD 4150'

OH 4185'-9360'

TD 9360'



### Notes:

- 05-07-1954 - Drilling completed.
- 05-21-1954 - Wellbore P&A'd.
- 03-13-1958 - Wellbore re-entered to 4192' with 9" rock bit. 7" liner installed from 3750'-4185'. Perforated Entrada from 3837'-3847'.
- 10-09-1961 - Attempted to abandon with 7" bridge plug. Tagged at 3660'. Shut-in well with wellbore surface equipment left in place.