



Crestone Peak Resources

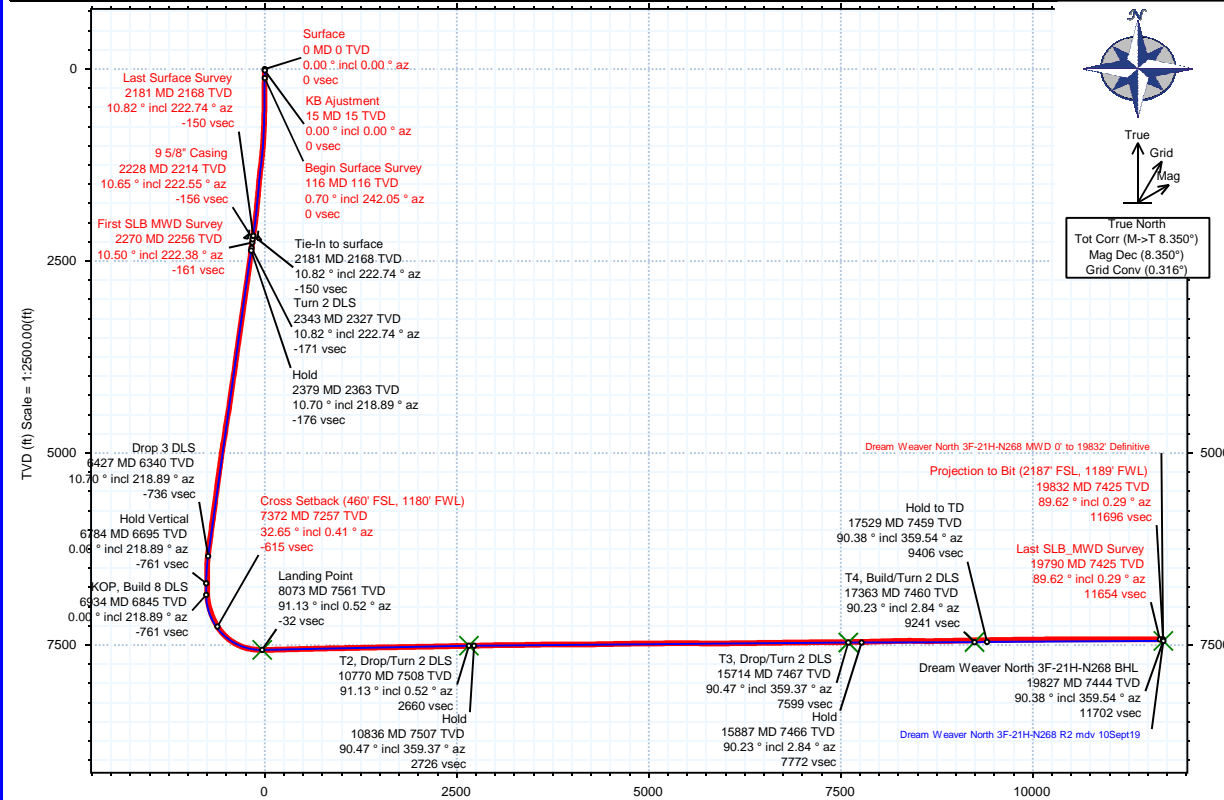


Borehole:	Well:	Field:	Structure:
Original Hole	Dream Weaver North 3F-21H-N268	CO, Weld County (NAD 83 NZ) - 2019	Crestone Peak 21-02N-68W (Dream Weaver Pad)

Gravity & Magnetic Parameters	Surface Location	Miscellaneous
Model: HDGM 2019 Dip: 66.427° Date: 19-Nov-2019	NAD83 Colorado State Plane, Northern Zone, US Feet	Slot: Dream Weaver North 3F-21H-N268 TVD Ref: KB 28ft(4929ft above MSL)
MagDec: 8.35° FS: 51936.053mT Gravity FS: 998.983mgn (9.80665 Based)	Lat: N 40 7 11.73 Northing: 1286908.99ftUS Grid Conv: 0.3158°	Plan: Dream Weaver North 3F-21H-N268 MWD 0' to 19832' Definitive
	Lon: W 105 0 40.47 Easting: 3136685.83ftUS Scale Fact: 0.99995944	

Target Name	Target Description	Latitude	Longitude	Northing	Easting	TVD	VSec	N(+)/S(-)	E(+)/W(-)
Dream Weaver Pad North Sec 09-05L-CL		N 40 7 12.23	W 105 0 40.89	1286960.17	3136653.11	4929.00	52.94	51.37	-32.44
Dream Weaver Pad North Sec 16-09-CL		N 40 7 11.42	W 105 0 40.22	1286878.50	3136705.30	4929.00	-31.54	-30.60	19.30
Dream Weaver Pad North Sec 21-16-05L		N 40 7 12.23	W 105 0 40.89	1286960.17	3136653.11	4929.00	52.94	51.37	-32.44
Dream Weaver Pad North Sec 21-16-09		N 40 7 11.42	W 105 0 40.22	1286878.50	3136705.30	4929.00	-31.54	-30.60	19.30
Dream Weaver North 3F-21H-N268 BHL		N 40 7 12.23	W 105 0 40.89	1286960.17	3136653.11	4929.00	52.94	51.37	-32.44
Dream Weaver North 3F- T4		N 40 8 42.88	W 105 0 48.29	1296129.11	3136027.48	7444.00	11701.88	11686.96	-590.67
Dream Weaver North 3F- T3		N 40 9 29.59	W 105 0 48.67	1294480.96	3135992.08	7467.00	9242.90	9224.00	-607.55
Dream Weaver North 3F-21H-N268 TPZ		N 40 7 11.10	W 105 0 48.44	1286841.79	3136052.60	7508.00	7508.00	7576.00	-552.03
					3136058.91	7561.00	2680.85	2633.00	-518.75
							-32.03	-63.74	-627.31

Critical Point	MD	INCL	AZIM	TVD	VSEC	N(+)/S(-)	E(+)/W(-)	DLS
Surface	0.00	0.00	0.00	0.00	0.00	0.00	0.00	0.00
KB Adjustment	15.00	0.00	0.00	15.00	0.00	0.00	0.00	0.00
Begin Surface Survey	116.00	0.70	242.05	116.00	-0.26	-0.29	-0.55	0.69
Last Surface Survey	2181.00	10.82	222.74	2168.29	-149.89	-155.73	-111.98	1.19
9 5/8" Casing	2228.00	10.65	222.55	2214.46	-156.02	-162.17	-117.91	0.37
First SLB MWD Survey	2270.00	10.50	222.38	2255.75	-161.44	-167.86	-123.12	0.37
Cross Setback (460' FSL, 1180' FWL)	7372.01	32.65	0.41	7257.17	-614.54	-647.35	-634.51	7.46
Last SLB_MWD Survey	19790.00	89.62	0.29	7425.08	11654.08	11639.33	-586.22	1.01
Projection to Bit (2187' FSL, 1189' FWL)	19832.00	89.62	0.29	7425.35	11696.02	11681.33	-586.01	0.00



Vertical Section (ft) Azim = 357.11° Scale = 1:2500.00(ft) Origin = 0N-S, 0E-W

