

# HALLIBURTON

iCem® Service

**KP KAUFFMAN COMPANY INC**

United States of America, COLORADO

**For: Rick Ramos**

Date: Thursday, May 21, 2020

WELD

KPK Champlin 86 Amoco B 3

Job Date: Thursday, May 21, 2020

Sincerely,

**Nick Peterson**

1

## 1.0 Real-Time Job Summary

## 1.1 Job Event Log

Type	Seq. No.	Activity	Graph Label	Date	Time	Source	DH Density (ppg)	DS Pump Rate (bbl/min)	PS Pump Press (psi)	DS Pmp Stg Tot (bbl)	Comments
Event	1	Call Out	Call Out	5/21/2020	04:00:00	USER					CREW CALLED OUT AT 04:00 05/21/2020, REQUESTED ON LOCATION 08:00 05/21/2020. CREW PICKED UP CHEMICALS FROM FT. LUPTON, CO. PUMP 12645765, 660 11566182 AND ONE LD.
Event	2	Depart Yard Safety Meeting	Depart Yard Safety Meeting	5/21/2020	06:45:00	USER					CREW DISCUSSED ROUTES, HAZARDS, AND COMMUNICATION WITH CREW.
Event	3	Crew Leave Shop	Crew Leave Shop	5/21/2020	07:00:00	USER					STARTED JOURNEY MANAGEMENT.

END JOURNEY  
MANAGEMENT. MEET  
WITH CO. MAN TO DISCUSS  
JOB; PLUG 1 TUBING SET @  
2,450', 2.375" 4.7 LB/FT,  
CASING 4.5" 11.6 LB/FT,  
RETAINER SET @ 2,500'.  
SURFACE CASING 8.625" 24  
LB/FT CASING SET @ 457'.  
DISPLACE WITH WATER  
LEAVING 50' CEMENT ON  
TOP OF RETAINER. RIG TO  
PULL TUBING OUT RUN IN  
WIREFLINE TO SHOOT PERFS.  
PLUG 2 PERFS SHOT @ 610',  
6 SHOTS 3/8", RETAINER  
SET @ 410' DISPLACE WITH  
FRESH WATER LEAVING 50'  
ON TOP OF RETAINER. RIG  
TO PULL TUBING TO RUN IN  
WIREFLINE TO SHOOT PERFS.  
PLUG 3 SHOT PERFS @ 100'.

HAZARD HUNT. DISCUSSED  
POSSIBLE HAZARDS  
ASSOCIATED WITH  
LOCATION, RIG UP, AND  
WEATHER.

RIG UP BULK AND MIXING  
EQUIPMENT.

MEETING WITH  
HALLIBURTON AND RIG  
PERSONNEL.  
COMMUNICATED  
POTENTIAL SAFETY  
HAZARDS AND JOB DETAILS.

Event	4	Arrive at Location from Service Center	Arrive at Location from Service Center	5/21/2020	07:45:00	USER
-------	---	---	---	-----------	----------	------

Event	5	Pre-Rig Up Safety Meeting	Pre-Rig Up Safety Meeting	5/21/2020	08:00:00	USER
-------	---	------------------------------	------------------------------	-----------	----------	------

Event	6	Rig-Up Equipment	Rig-Up Equipment	5/21/2020	08:15:00	USER
-------	---	------------------	------------------	-----------	----------	------

Event	7	Rig-Up Completed	Rig-Up Completed	5/21/2020	09:00:00	USER
-------	---	------------------	------------------	-----------	----------	------

Event	8	Pre-Job Safety Meeting	Pre-Job Safety Meeting	5/21/2020	09:15:00	USER
-------	---	------------------------	------------------------	-----------	----------	------

Event	11	Start Job	Start Job	5/21/2020	09:40:00	RTD Import	8.27	0.00	847.28	0.00	BEGIN RECORDING JOB DATA.
Event	15	Test Lines	Test Lines	5/21/2020	09:42:27	RTD Import	8.38	0.00	-2.79	1.06	PRESSURE TESTED IRON TO 3500 PSI. KICKOUTS SET @ 500 PSI, KICKED OUT @ 1,240 PSI, 5TH GEAR STALL OUT @ 1,860 PSI.
Event	24	Circulate Well	Circulate Well*	5/21/2020	09:46:20	RTD Import	8.37	0.00	1.97	1.06	PUMP 10 BBLS OF FRESH WATER. PUMP RATE 2 BBLS/MIN @ 580 PSI.
Event	27	Pump Cement	Pump Cement*	5/21/2020	10:03:40	RTD Import	8.39	0.00	338.38	9.08	PUMP 40 SKS OF PREMIUM CEMENT/ NO CALCIUM CHLORIDE @ 15.8 LB/GAL, 1.15 FT3/SK, 5.0 GAL/SK. 8.19 BBLS, DENSITY VERIFIED BY PRESSURIZED MUD SCALES. PUMP RATE 2 BBLS/MIN @ 440 PSI.
Event	28	Pump Displacement	Pump Displacement*	5/21/2020	10:09:27	RTD Import	16.84	0.00	-2.79	7.50	PUMP 8.75 BBLS OF FRESH WATER LEAVING 50' CEMENT ON TOP OF RETAINER. PUMP RATE 2.5 BBLS/MIN @ 583 PSI. TOTAL 6.63 BBLS CEMENT PUMPED INTO PERFS AND UP THE ANNULUS.
Event	31	Shutdown	Shutdown	5/21/2020	10:13:16	RTD Import	8.39	0.00	425.11	8.88	SHUTDOWN FOR RIG TO TOO. WIRELINE RAN IN TO SHOOT PERFS @ 610' WITH A TOTAL OF 6 SHOTS 3/8". RETAINER SET @ 410'. * 460' R.R.

Event	38	Circulate Well	Circulate Well*	5/21/2020	12:16:42	RTD Import	8.39	0.00	-0.89	23.84	PUMP 15 BBLS OF FRESH WATER. PUMP RATE 2 BBLS/MIN @ 180 PSI. PUMPED FRESH WATER UNTIL WE HAD CIRCULATION AT PITS PRIOR TO MIXING CEMENT.
Event	50	Pump Cement	Pump Cement*	5/21/2020	12:36:37	RTD Import	8.40	0.00	20.08	0.00	PUMP 65 SKS OF PREMIUM CEMENT/ NO CALCIUM CHLORIDE @ 15.8 LB/GAL, 1.15 FT3/SK, 5.0 GAL/SK. 13.31 BBLS, DENSITY VERIFIED BY PRESSURIZED MUD SCALES. PUMP RATE 2 BBLS/MIN @ 40 PSI.
Event	55	Pump Displacement	Pump Displacement*	5/21/2020	12:47:08	RTD Import	15.86	2.08	46.76	13.72	PUMP 1.25 BBLS OF FRESH WATER LEAVING 50' CEMENT ON TOP OF RETAINER. PUMP RATE 2 BBLS/MIN @ 23 PSI. PUMPED A TOTAL OF 10.22 BBLS OF CEMENT PUMPED BELOW RETAINER AND INTO PERFS UP ANNULUS.
Event	60	Shutdown	Shutdown	5/21/2020	12:47:57	RTD Import	3.55	0.00	-9.46	0.00	SHUTDOWN FOR RIG TO TOOH AND WIRELINE TO RUN IN AND SHOOT PERFS @ 100'.
Event	83	Circulate Well	Circulate Well*	5/21/2020	13:54:03	RTD Import	8.39	0.00	-1.84	0.00	PUMP 4 BBLS OF FRESH WATER. PUMP RATE 2 BBLS/MIN @ 32 PSI. 4 BBLS INTO CIRCULATING WE SAW FLOW AT PITS.

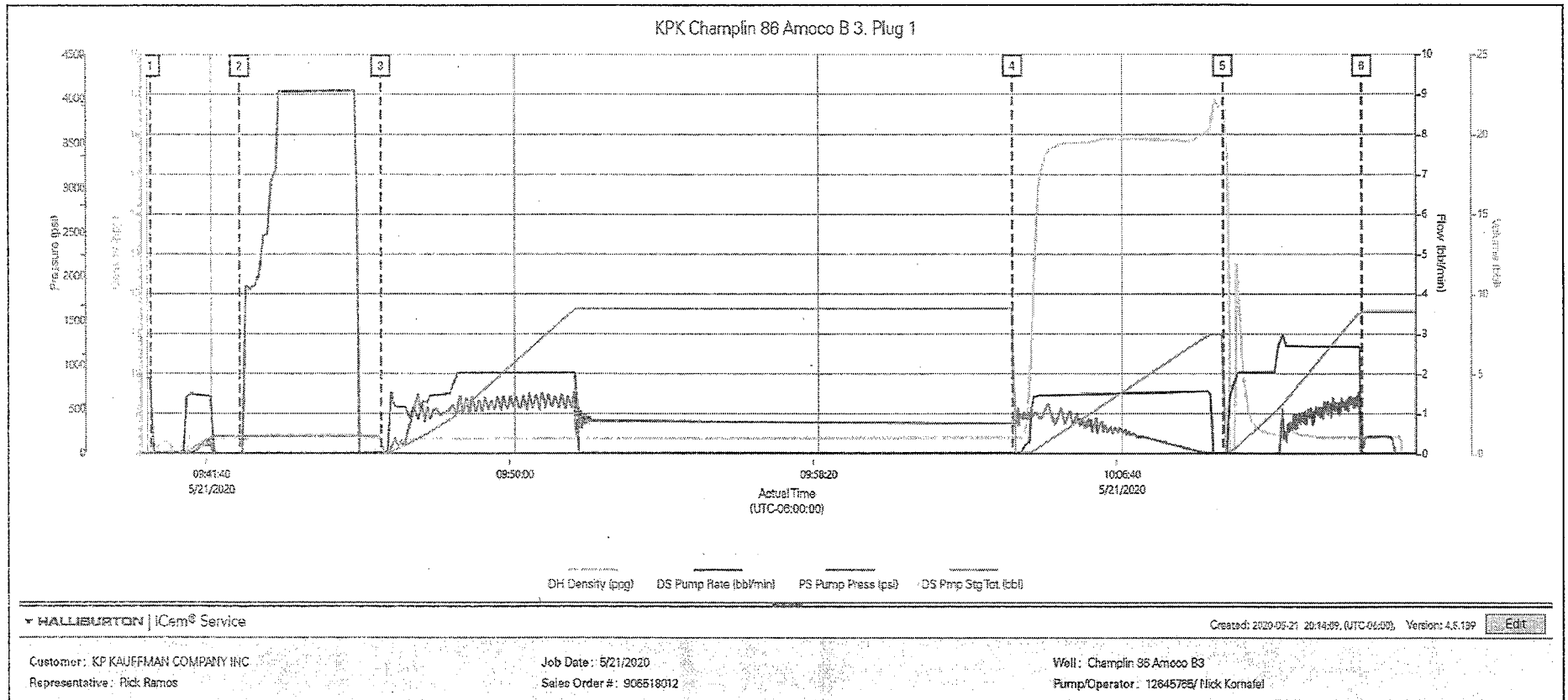
PUMP 65 SKS OF PREMIUM CEMENT/ NO CALCIUM CHLORIDE @ 15.8 LB/GAL, 1.15 FT3/SK, 5.0 GAL/SK. 13.31 BBLS, DENSITY VERIFIED BY PRESSURIZED MUD SCALES. PUMP RATE 2 BBLS/MIN @ 20 PSI. STARTED OFF MIXING AND PUMPING 40 SKS. AFTER PUMPING 8.19 BBLS WE WERE ONLY GETTING WATER AT THE PITS. SHUTDOWN TO BATCH UP ANOTHER 25 SKS OF CEMENT. PUMPED 3 BBLS OF 5.12 BEFORE WE STARTED SEEING GOOD CEMENT. PUMPED .5 MORE BBLS, SHUTDOWN PULLED FLANGE OFF WELL HEAD AND PUMPED .5 BBLS INTO 4.5" TUBING.

Event	84	Pump Cement	Pump Cement*	5/21/2020	13:58:18	RTD Import	8.42	0.00	-0.89	0.00	
Event	85	Other	Other	5/21/2020	14:01:09	USER	15.60	2.64	76.31	6.54	SHUTDOWN TO BATCH UP 25 SK OF CEMENT TO PUMP UNTIL WE SAW AT SURFACE.
Event	91	Pump Cement Away	Pump Cement Away	5/21/2020	14:12:15	USER	16.98	0.03	18.17	0.00	PUMPED THE 25 SKS UNTIL CEMENT TO SURFACE.
Event	92	Cement Returns to Surface	Cement Returns to Surface	5/21/2020	14:13:24	USER	15.59	1.97	56.29	2.15	CEMENT TO SURFACE 3 BBLS IN, PUMPED .5 BBLS, AND THEN TOPPED OFF CASING WITH .5 BBLS.
Event	93	End Job	End Job	5/21/2020	14:13:51	USER	16.76	0.00	-2.79	2.24	STOP RECORDING JOB DATA.

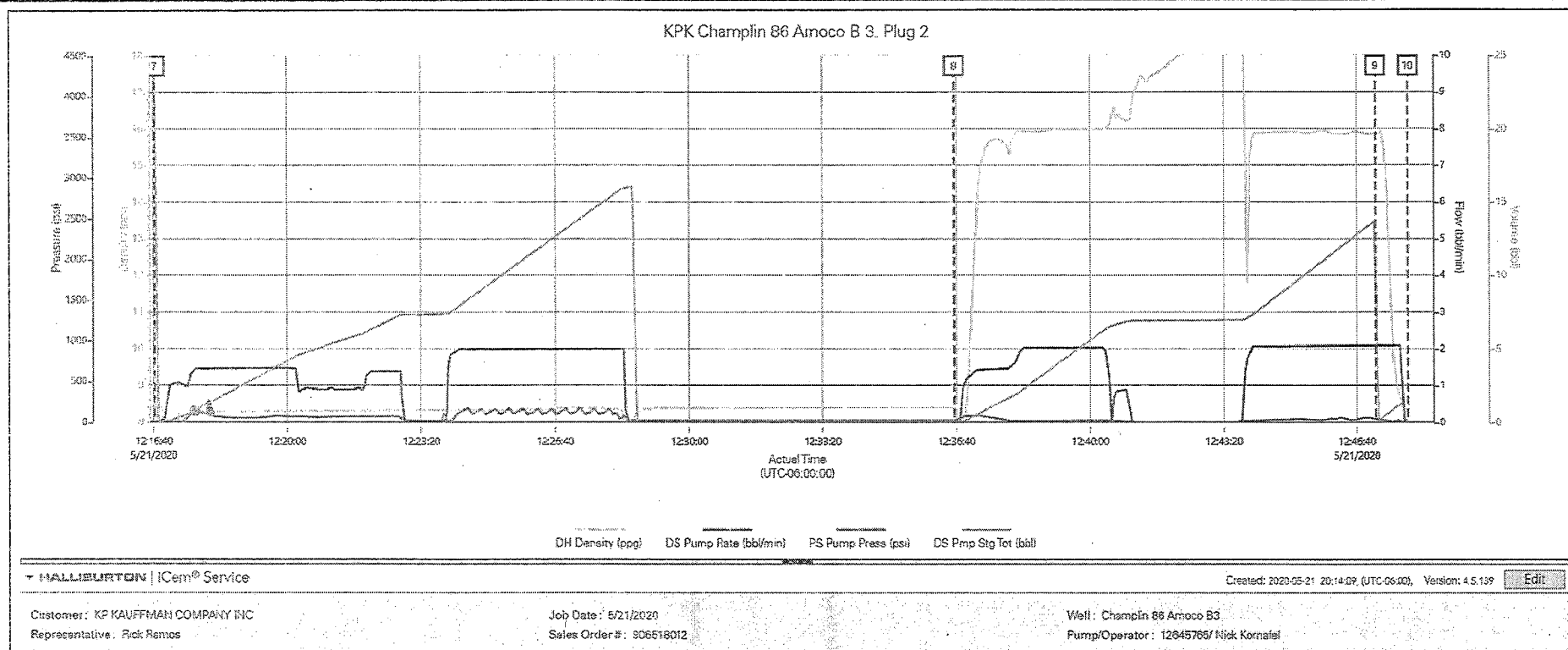
Event	94	Safety Meeting - Pre Rig-Down	Safety Meeting - Pre Rig-Down	5/21/2020	14:20:00	USER	16.23	0.00	5.78	2.24	DISCUSSED POSSIBLE HAZARDS ASSOCIATED WITH WEATHER, LOCATION AND RIGGING DOWN IRON AND HOSES.
Event	97	Rig-Down Equipment	Rig-Down Equipment	5/21/2020	14:30:00	USER	0.36	0.00	-1.84	11.93	RIG DOWN BULK AND MIXING EQUIPMENT.
Event	110	Depart Location Safety Meeting	Depart Location Safety Meeting	5/21/2020	15:15:00	USER					CREW DISCUSSED ROUTES HAZARDS AND COMMUNICATION WITH CREW.
Event	111	Crew Leave Location	Crew Leave Location	5/21/2020	15:30:00	USER					THANK YOU FOR USING HALLIBURTON – NICK PETERSON AND CREW.

## 2.0 Attachments

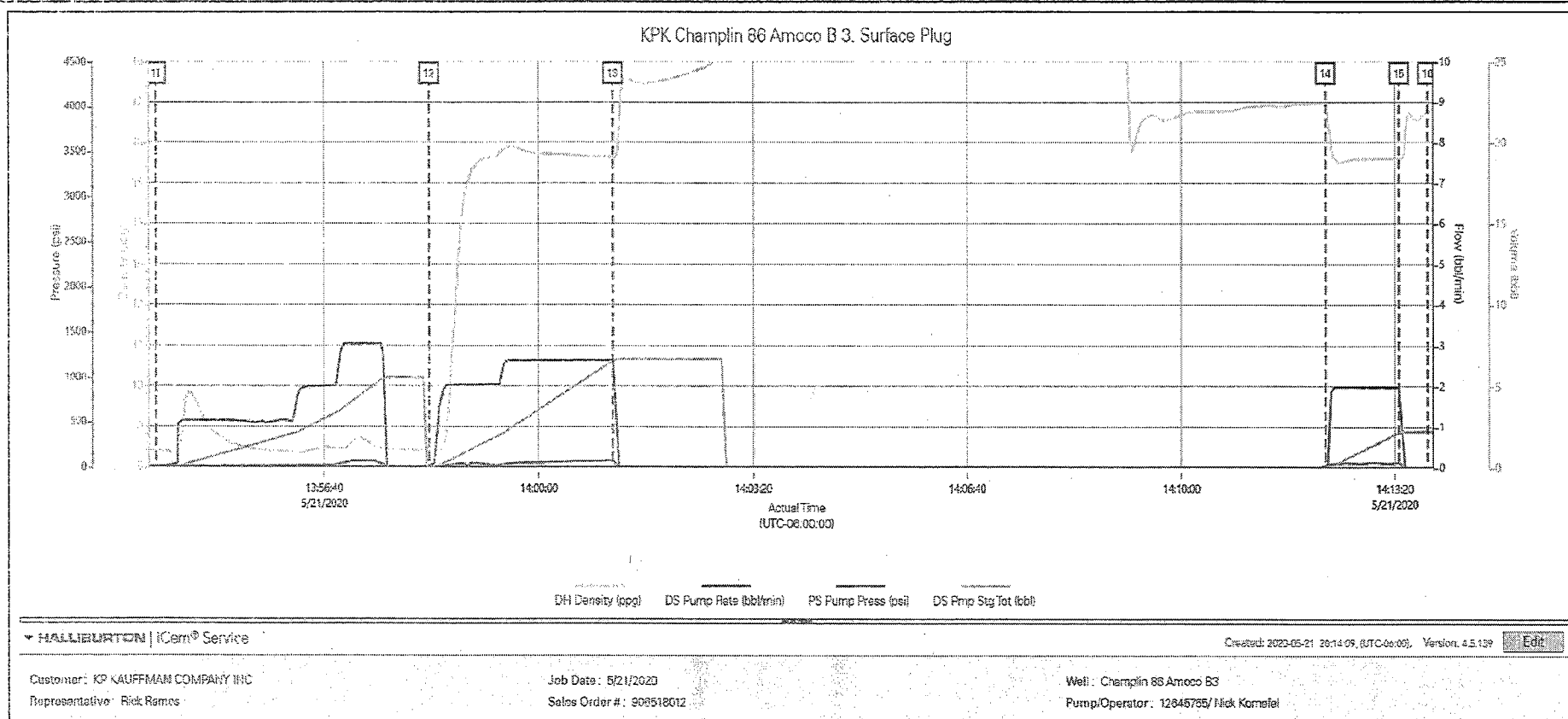
### 2.1 KPK Champlin 86 Amoco B 3. Plug 1.png



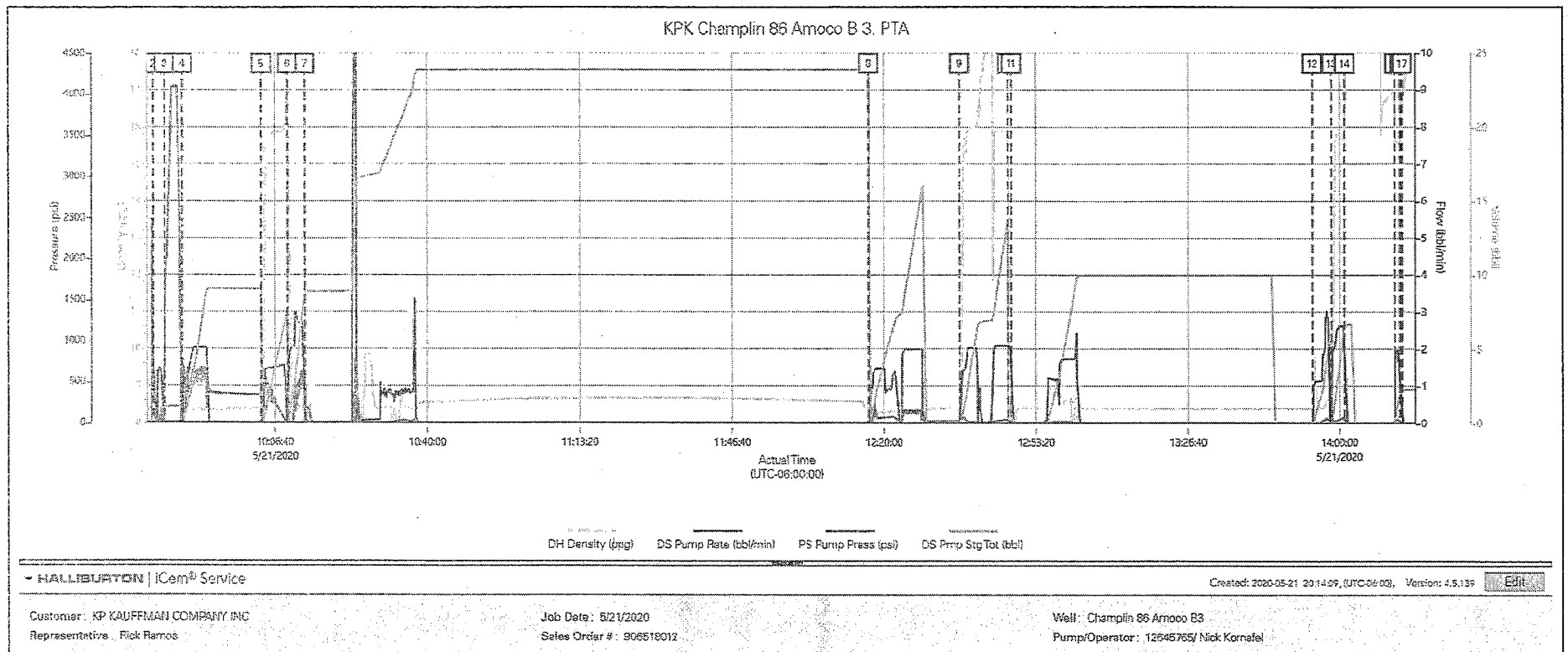
## 2.2 KPK Champlin 86 Amoco B 3. Plug 2.png



## 2.3 KPK Champlin 86 Amoco B 3. Surface Plug.png



## 2.4 KPK Champlin 86 Amoco B 3. PTA.png



# HALLIBURTON

## Cementing Job Summary

*The Road to Excellence Starts with Safety*

Sold To #: 303209		Ship To #: 9040628		Quote #:		Sales Order #: 0906518012				
Customer: K P KAUFFMAN CO INC-EBUS				Customer Rep: Rick Ramos						
Well Name: CHAMPLIN 86 AMOCO B#3,WELD				Well #: 9040628		API/UWI #: 05-123-08888				
Field:		City (SAP): ERIE		County/Parish: WELD		State: COLORADO				
Legal Description:										
Contractor: UNKNOWN				Rig/Platform Name/Num: WORKOVER RIG						
Job BOM: 7526 7526										
Well Type: OIL										
Sales Person: HALAMERICA\HB41307				Srv Supervisor: Nicholas Peterson						
Job										
Formation Name										
Formation Depth (MD)		Top		Bottom						
Form Type				BHST						
Job depth MD		2,450'		Job Depth TVD		2,500'				
Water Depth				Wk Ht Above Floor		5'				
Perforation Depth (MD)		From		To						
Well Data										
Description	New / Used	Size in	ID in	Weight lbm/ft	Thread	Grade	Top MD ft	Bottom MD ft	Top TVD ft	Bottom TVD ft
Casing		8.625	8.097	24			0	457		
Casing		4.5	4.052	10.5			0	2450		
Tubing		2.375	1.995	4.7			0	2450		
Tools and Accessories										
Type	Size in	Qty	Make	Depth ft		Type	Size in	Qty	Make	
Retainer Plug 1	4.5	1		2,450						
Retainer Plug 2	4.5	1		610'						
Fluid Data										
Stage/Plug #: 1										
Fluid #	Stage Type	Fluid Name	Qty	Qty UoM	Mixing Density lbm/gal	Yield ft3/sack	Mix Fluid Gal	Rate bbl/min	Total Mix Fluid Gal	
1	Squeeze	Premium Cement	40	sack	15.8	1.15	5.0	2	200	
Cement in 4.5"										
Amount		50'			Reason: Customer request 50' on top of retainer					

*Cementing Job Summary*

## Fluid Data

Stage/Plug #: 2

Fluid #	Stage Type	Fluid Name	Qty	Qty UoM	Mixing Density lbm/gal	Yield ft <sup>3</sup> /sack	Mix Fluid Gal	Rate bbl/min	Total Mix Fluid Gal
1	Squeeze	Premium Cement	65	sack	15.8	1.15	5.0	2	325

Cement in 4.5"	Amount	50'	Reason: Customer request 50' on top of retainer
----------------	--------	-----	---

## Fluid Data

Stage/Plug #: 3

Fluid #	Stage Type	Fluid Name	Qty	Qty UoM	Mixing Density lbm/gal	Yield ft <sup>3</sup> /sack	Mix Fluid Gal	Rate bbl/min	Total Mix Fluid Gal
1	Squeeze	Premium Cement	65	sack	15.8	1.15	5.0	2	325

Mix Water:	pH 6.9	Mix Water Chloride:	200 ppm	Mix Water Temperature:	69°F
Cement Temperature:	## °F	Plug Displaced by:	8.33 lb/gal	Disp. Temperature:	69 °F
Plug Bumped?	N/A	Bump Pressure:	N/A	Floats Held?	N/A
Cement Returns:	2 bbls	Returns Density:	15.8 lb/gal	Returns Temperature:	##

Comment: Pumped 8.19 bbls Cement for Plug 1 displaced 8.7 bbls leaving 50' of cement on top of retainer in 4.5" casing. Plug 2 pumped 13.31 bbls displaced 1.1 bbls leaving 50' of cement on top of retainer in 4.5" casing. Plug 3 pumped 40 sks 8.19 bbls of cement, never saw any cement to surface. Rick had us shutdown and batch up another 25 sks 5.12 bbls. Pumped 3 bbls until we saw good cement through the casing valve. Shutdown for rig crew to remove flange on well head and pumped .5 bbls into 5.5" casing then shutdown and pumped off remainder into wash up tank.

# Summary Report

Crew: \_\_\_\_\_  
Job Start Date: 05/21/2020 09:00 AM

Sales Order #: 0906518012  
WO #: 0906518012  
PO #: NA  
AFE #:

Customer: K P KAUFFMAN CO INC-EBUS

Field:

Job Type:

CMT SQUEEZE  
PERFORATIONS  
BOM

UWI / API Number: 05-123-08888

County/Parish: WELD

Service Supervisor: Nicholas Peterson

Well Name: CHAMPLIN 86 AMOCO B#3, WELD State: COLORADO

Well No: 9040628

Latitude:

Longitude:

Sect / Twn / Rng: //

Cust Rep Name: Rick Ramos

Cust Rep Phone #:

## Remarks:

The Information Stated Herein is Correct	Customer Representative Signature	Date
	Customer Representative Printed Name	

Field Ticket Number: 906518012		Field Ticket Date: 05/22/20		Planning Order #: NA	
<b>Bill To:</b> K P KAUFFMAN CO INC-EBUS DONOTMAIL-1675 BRDWAY STE 2800 DENVER 80202		<b>Job Name:</b> KPK Champlin 86 Amoco B 3 PTA <b>Order Type:</b> ZOH <b>Well Name:</b> CHAMPLIN 86 AMOCO B#3 <b>Company Code:</b> 1100 <b>Customer PO No.:</b> NA <b>AFE:</b> <b>Shipping Point:</b> Fort Lupton, CO <b>Sales Office:</b> Rocky Mountains BD <b>Well Type:</b> OIL <b>Well Category:</b> Development <b>Rig Name/#:</b> WORKOVER RIG			
<b>Ship To:</b> CHAMPLIN 86 AMOCO B3,WELD CHAMPLIN 86 AMOCO B3 ERIE CO 80516 USA					

Material	Description	QTY	UOM	Unit Amount	Gross Amount	Discount	Net Amount
7526	CMT SQUEEZE PERFORATIONS BOM 7526	1.00	JOB	0.00	0.00		0.00
1	ZI-MILEAGE FROM NEAREST HES BASE,/UNIT Number of Units	30.00 1	MI	9.79 USD/1 MI	293.70	190.91	102.79
16097	SQUEEZE PUMPING CHARGE,ZI FEET/METERS (FT/M) DEPTH	1.00 FT 2450	EA	7,909.00 USD/1 EA	7,909.00	5,140.85	2,768.15
3965	HANDLE&DUMP SVC CHRQ, CMT&ADDITIVES,ZI Unit of Measurement NUMBER OF EACH	140.00 EA 1	CF	5.49 USD/1 CF	768.60	499.59	269.01
76400	MILEAGE,CMT MTLS DEL/RET MIN NUMBER OF TONS	15.00 6.58	MI	3.35 USD/1 MI	330.65	214.92	115.73
	<b>SubTotal</b>				<b>9,301.95</b>	<b>6,046.27</b>	<b>3,255.68</b>
100003685	CEM,CLASS G / PREMIUM, BULK Premium Cement	40.00	SK	44.26 USD/1 SK	1,770.40	1,150.76	619.64
100003685	CEM,CLASS G / PREMIUM, BULK Premium Cement	65.00	SK	44.26 USD/1 SK	2,876.90	1,869.99	1,006.91
100003685	CEM,CLASS G / PREMIUM, BULK Premium Cement	65.00	SK	44.26 USD/1 SK	2,876.90	1,869.99	1,006.91
100008028	CHEM, SUGAR,GRANULATED, 50LB BAG	50.00	LB	6.96 USD/1 LB	348.00	226.20	121.80
2	MILEAGE FOR CEMENTING CREW Number of Units	30.00 1	MI	5.76 USD/1 MI	172.80	112.32	60.48
<b>Totals</b>				<b>USD</b>	<b>17,346.95</b>	<b>11,275.53</b>	<b>6,071.42</b>