

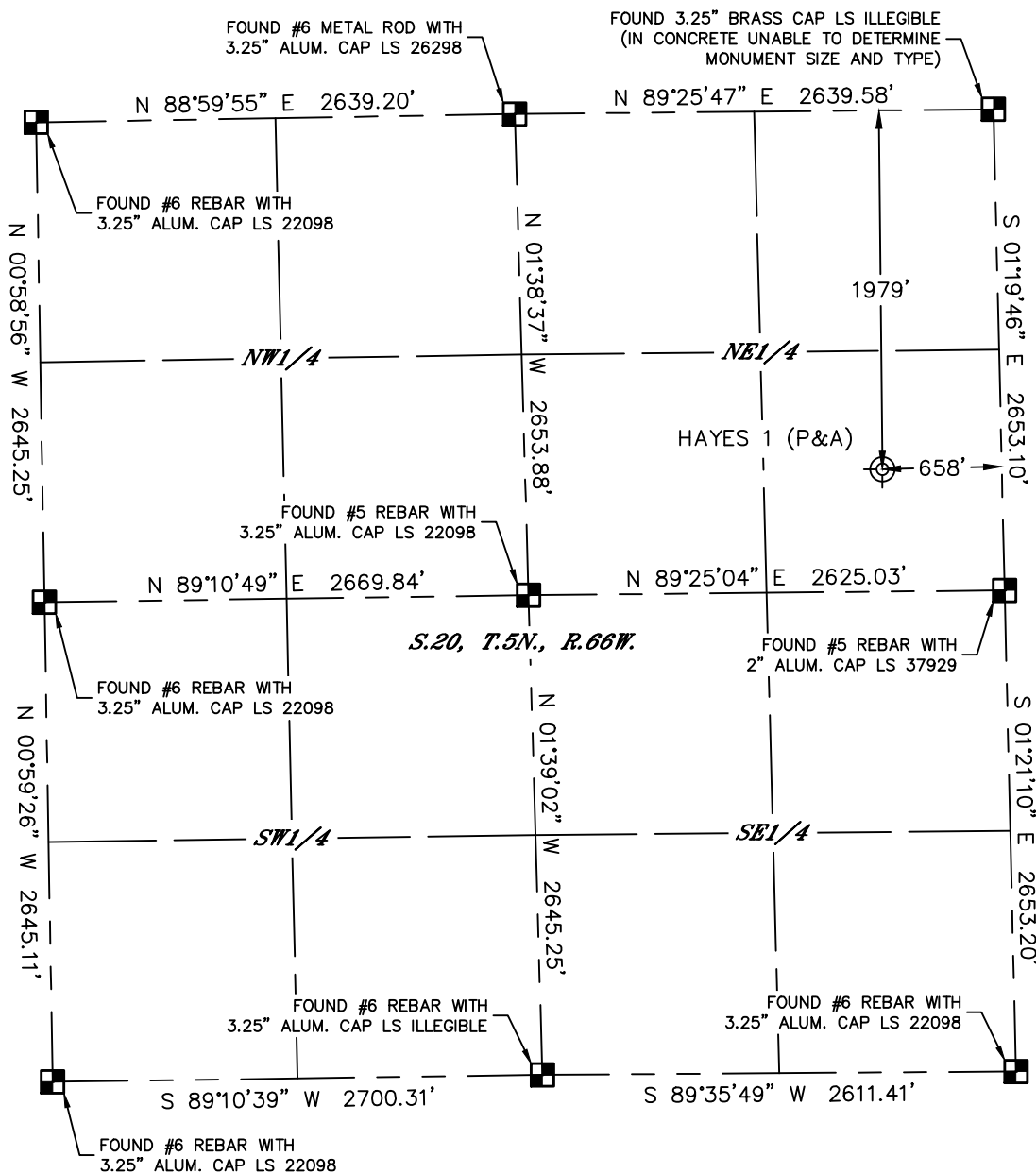


Lat40°, Inc. 6250 W. 10th Street, Unit 2, Greeley, CO 970-515-5294

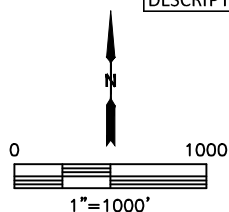
PLUGGED AND ABANDONED WELL EXHIBIT

HAYES 1

SECTION: 20
TOWNSHIP: 5N
RANGE: 66W
6TH. P.M.
WELD COUNTY, CO



CLIENT: PDC ENERGY				LANDMAN: CORY SHEAHEN			
INSTRUMENT OPERATOR: SCOTT SHERARD				SURVEY DATE: 5/13/2020		SURFACE USE: RANGE LAND	
SHL FOOTAGE		SHL LAT °	SHL LONG °	SHL PDOP	SHL ELEV (FT.)	SHL 1/4/1/4	SHL S-T-R
1979	FNL 658 FEL	40.38688	-104.79650	1.7	4890	SENE	20-5-66
DESCRIPTION: FOUND CAPPED WELL PIPE							



LEGEND

- = ALIQUOT MONUMENT AS DESCRIBED
- ⊙ = ABANDONED WELL

NOTE:

- 1) Bearings shown are Grid Bearings of the Colorado State Plane Coordinate System, North Zone, North American Datum 1983. The lineal dimensions as contained herein are based upon the "U.S. Survey Foot."
- 2) Distances to section lines measured at 90 degrees from said section lines.
- 3) Ground elevations are based on an observed GPS elevation (NAVD 1988 DATUM).
- 4) Latitude and Longitude shown are (NAD 83 DATUM).
- 5) IMPROVEMENTS: See LOCATION DRAWING for all visible improvements within 500' of oil and gas location.
- 6) This map does not represent a boundary survey.



Sheet 1 of 2

Brian S. Rottinghaus—On behalf of Lat40°, Inc.
Colorado Licensed Professional
Land Surveyor No. 38571
DATE: 05/13/2020
PROJECT#: 2020160



Lat40°, Inc. 6250 W. 10th Street, Unit 2, Greeley, CO 970-515-5294

PLUGGED AND ABANDONED WELL EXHIBIT

HAYES 1

SECTION: 20
TOWNSHIP: 5N
RANGE: 66W
6TH. P.M.
WELD COUNTY, CO
DATE: 5/13/2020



VIEW NORTH



VIEW WEST



VIEW EAST



VIEW SOUTH