

Bayswater Exploration & Production, LLC

Well Name: **COT EAST P-30-29HN**

Surface Location: COT 30J Pad Sec.30-T7N-R66W

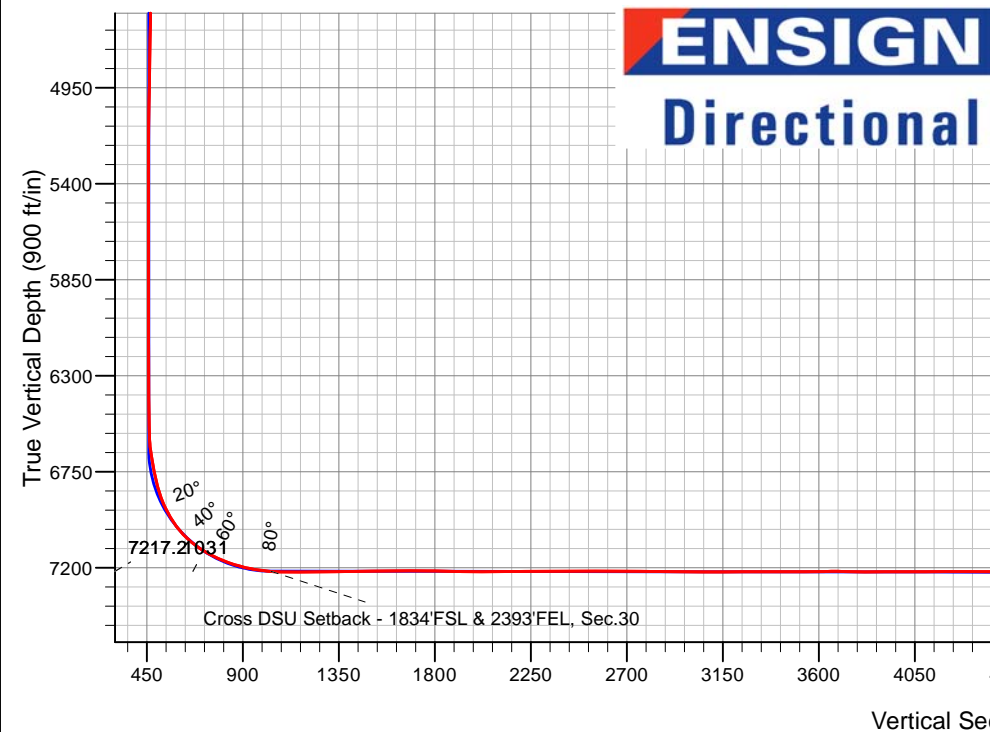
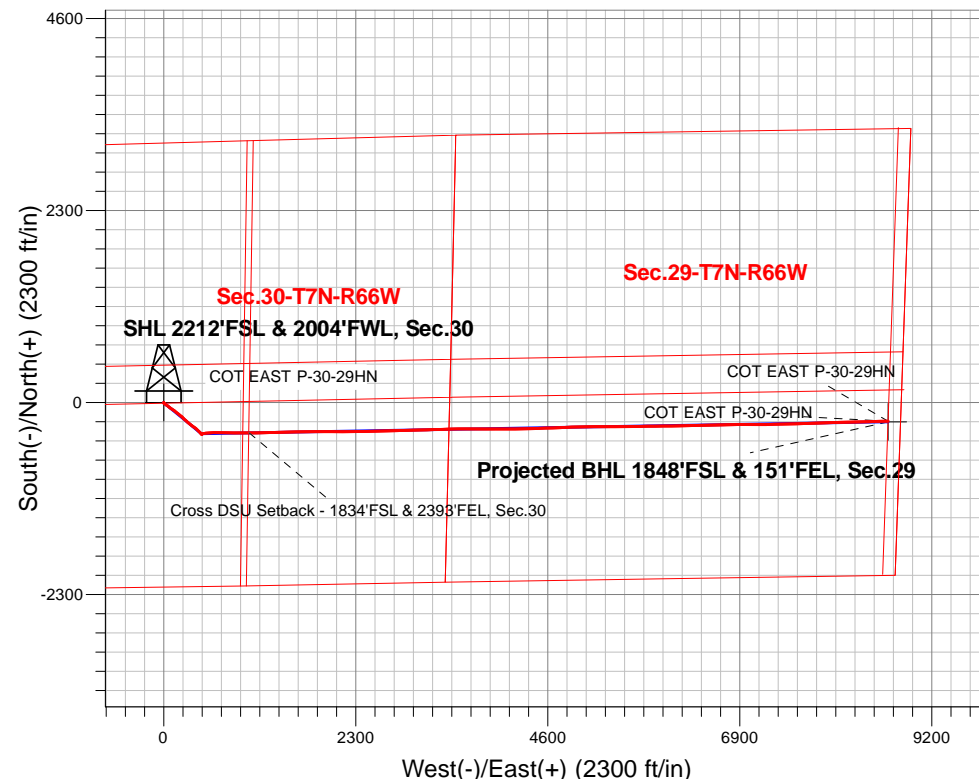
North American Datum 1983 , US State Plane 1983, Colorado Northern Zone

Ground Elevation: 4946.0

+N/-S	+E/-W	Northing	Easting	Latitude	Longitude	Slot
0.0	0.0	1441778.86	3187646.93	40.544122	-104.824806	
Original Well Elev WELL @ 4971.0ft (Original Well Elev)						

FINAL SURVEY

Projected Bottom Hole Location
15,253'MD 7196'TVD 224'S & 8676'E of SHL
90.48 degree Incl @ 88.28 degree AZM



COT 30J Pad Sec.30-T7N-R66W
COT EAST P-30-29HN
COT EAST P-30-29HN Wellbore #1
14:16, December 04 2019

ANNOTATIONS

TVD	MD	Annotation
7217.2	7596.4	Cross DSU Setback - 1834'FSL & 2393'FEL, Sec.30

LEGEND

- COT EAST P-30-29HN, COT EAST P-30-29HN Wellbore #1, Plan #3 (11-25-19) V0
- COT EAST P-30-29HN Wellbore #1
- Survey #1



Bayswater Exploration & Production, LLC

SEC.30-T7N-R66W

COT 30J Pad Sec.30-T7N-R66W

COT EAST P-30-29HN

COT EAST P-30-29HN Wellbore #1

Survey: Survey #1

Standard Survey Report

04 December, 2019



BAYSWATER
EXPLORATION & PRODUCTION, LLC

Company:	Bayswater Exploration & Production, LLC	Local Co-ordinate Reference:	Well COT EAST P-30-29HN
Project:	SEC.30-T7N-R66W	TVD Reference:	WELL @ 4971.0ft (Original Well Elev)
Site:	COT 30J Pad Sec.30-T7N-R66W	MD Reference:	WELL @ 4971.0ft (Original Well Elev)
Well:	COT EAST P-30-29HN	North Reference:	True
Wellbore:	COT EAST P-30-29HN Wellbore #1	Survey Calculation Method:	Minimum Curvature
Design:	COT EAST P-30-29HN Wellbore #1	Database:	US_EDM

Project	SEC.30-T7N-R66W, Weld County, CO		
Map System:	US State Plane 1983	System Datum:	Mean Sea Level
Geo Datum:	North American Datum 1983		Using Well Reference Point
Map Zone:	Colorado Northern Zone		Using geodetic scale factor

Site		COT 30J Pad Sec.30-T7N-R66W						
Site Position:		Northing:	1,441,808.15	usft	Latitude:	40.544203		
From:	Lat/Long	Easting:	3,187,616.69	usft	Longitude:	-104.824914		
Position Uncertainty:	0.0	ft	Slot Radius:	13-3/16	"	Grid Convergence:	0.44	°

Well	COT EAST P-30-29HN					
Well Position	+N/-S	0.0 ft	Northing:	1,441,778.86 usft	Latitude:	40.544122
	+E/-W	0.0 ft	Easting:	3,187,646.93 usft	Longitude:	-104.824806
Position Uncertainty		0.0 ft	Wellhead Elevation:	0.0 ft	Ground Level:	4,946.0 ft

Wellbore	COT EAST P-30-29HN Wellbore #1				
Magnetics	Model Name	Sample Date	Declination (°)	Dip Angle (°)	Field Strength (nT)
	HDGM	11/25/2019	7.95	66.90	52,235

Design	COT EAST P-30-29HN Wellbore #1				
Audit Notes:					
Version:	1.0	Phase:	ACTUAL	Tie On Depth:	0.0
Vertical Section:	Depth From (TVD) (ft)	+N/-S (ft)	+E/-W (ft)	Direction (°)	
	0.0	0.0	0.0	91.52	

Survey Program	Date	12/4/2019			
From (ft)	To (ft)	Survey (Wellbore)	Tool Name	Description	
215.0	15,253.0	Survey #1 (COT EAST P-30-29HN Wellbo	MWD	MWD - Standard	

Survey										
Measured Depth (ft)	Inclination (°)	Azimuth (°)	Vertical Depth (ft)	+N/-S (ft)	+E/-W (ft)	Vertical Section (ft)	Dogleg Rate (°/100usft)	Build Rate (°/100usft)	Turn Rate (°/100usft)	
0.0	0.00	0.00	0.0	0.0	0.0	0.0	0.00	0.00	0.00	
215.0	0.30	196.70	215.0	-0.5	-0.2	-0.1	0.14	0.14	0.00	
309.0	0.40	157.50	309.0	-1.1	-0.1	-0.1	0.27	0.11	-41.70	
404.0	0.60	194.60	404.0	-1.9	-0.1	-0.1	0.39	0.21	39.05	
499.0	0.70	198.50	499.0	-2.9	-0.4	-0.3	0.12	0.11	4.11	
594.0	1.10	198.30	594.0	-4.3	-0.9	-0.8	0.42	0.42	-0.21	
689.0	1.40	149.60	689.0	-6.2	-0.6	-0.4	1.12	0.32	-51.26	
784.0	1.20	111.50	783.9	-7.5	0.9	1.1	0.92	-0.21	-40.11	
878.0	0.80	95.10	877.9	-8.0	2.5	2.7	0.52	-0.43	-17.45	
973.0	0.90	74.70	972.9	-7.8	3.9	4.1	0.33	0.11	-21.47	

Company:	Bayswater Exploration & Production, LLC	Local Co-ordinate Reference:	Well COT EAST P-30-29HN
Project:	SEC.30-T7N-R66W	TVD Reference:	WELL @ 4971.0ft (Original Well Elev)
Site:	COT 30J Pad Sec.30-T7N-R66W	MD Reference:	WELL @ 4971.0ft (Original Well Elev)
Well:	COT EAST P-30-29HN	North Reference:	True
Wellbore:	COT EAST P-30-29HN Wellbore #1	Survey Calculation Method:	Minimum Curvature
Design:	COT EAST P-30-29HN Wellbore #1	Database:	US_EDM

Survey									
Measured Depth (ft)	Inclination (°)	Azimuth (°)	Vertical Depth (ft)	+N/-S (ft)	+E/-W (ft)	Vertical Section (ft)	Dogleg Rate (°/100usft)	Build Rate (°/100usft)	Turn Rate (°/100usft)
1,068.0	1.50	125.50	1,067.9	-8.4	5.6	5.8	1.22	0.63	53.47
1,163.0	3.30	134.00	1,162.8	-11.0	8.6	8.9	1.93	1.89	8.95
1,257.0	3.80	132.90	1,256.6	-15.0	12.8	13.2	0.54	0.53	-1.17
1,352.0	4.70	134.90	1,351.4	-19.9	17.9	18.4	0.96	0.95	2.11
1,447.0	4.60	124.80	1,446.0	-24.8	23.8	24.4	0.87	-0.11	-10.63
1,489.0	4.80	123.80	1,487.9	-26.7	26.6	27.3	0.51	0.48	-2.38
1,568.0	4.84	122.56	1,566.6	-30.4	32.2	33.0	0.14	0.05	-1.57
1,663.0	5.19	120.98	1,661.3	-34.7	39.2	40.1	0.40	0.37	-1.66
1,757.0	5.28	129.77	1,754.9	-39.7	46.2	47.2	0.86	0.10	9.35
1,852.0	6.16	133.28	1,849.4	-46.0	53.3	54.5	1.00	0.93	3.69
1,946.0	9.32	128.18	1,942.5	-54.1	62.9	64.3	3.44	3.36	-5.43
2,041.0	11.96	125.90	2,035.9	-64.7	76.9	78.6	2.81	2.78	-2.40
2,135.0	13.28	125.72	2,127.6	-76.7	93.6	95.6	1.40	1.40	-0.19
2,229.0	12.93	123.26	2,219.2	-88.8	111.2	113.5	0.70	-0.37	-2.62
2,323.0	13.28	126.08	2,310.7	-100.9	128.7	131.3	0.78	0.37	3.00
2,418.0	13.54	130.12	2,403.1	-114.5	146.0	149.0	1.02	0.27	4.25
2,513.0	13.01	129.77	2,495.6	-128.5	162.7	166.1	0.56	-0.56	-0.37
2,607.0	13.63	129.59	2,587.1	-142.3	179.4	183.1	0.66	0.66	-0.19
2,702.0	13.10	128.54	2,679.5	-156.1	196.4	200.5	0.61	-0.56	-1.11
2,796.0	13.37	128.71	2,771.0	-169.6	213.3	217.7	0.29	0.29	0.18
2,891.0	13.19	132.93	2,863.5	-183.8	229.8	234.6	1.04	-0.19	4.44
2,985.0	12.66	133.28	2,955.1	-198.2	245.1	250.3	0.57	-0.56	0.37
3,080.0	13.19	133.81	3,047.7	-212.8	260.5	266.1	0.57	0.56	0.56
3,174.0	13.81	132.40	3,139.1	-227.8	276.5	282.5	0.75	0.66	-1.50
3,269.0	13.10	131.35	3,231.5	-242.6	293.0	299.3	0.79	-0.75	-1.11
3,364.0	11.34	129.06	3,324.3	-255.6	308.3	315.0	1.92	-1.85	-2.41
3,459.0	12.84	126.08	3,417.2	-267.7	324.1	331.1	1.71	1.58	-3.14
3,553.0	13.63	126.95	3,508.7	-280.5	341.4	348.7	0.87	0.84	0.93
3,648.0	12.49	124.67	3,601.2	-293.1	358.8	366.4	1.32	-1.20	-2.40
3,742.0	13.01	127.48	3,692.9	-305.3	375.6	383.5	0.86	0.55	2.99
3,837.0	13.37	133.99	3,785.4	-319.4	391.9	400.3	1.61	0.38	6.85
3,931.0	13.10	133.81	3,876.9	-334.3	407.5	416.2	0.29	-0.29	-0.19
4,026.0	12.66	134.51	3,969.5	-349.1	422.6	431.8	0.49	-0.46	0.74
4,119.0	10.11	130.65	4,060.7	-361.6	436.1	445.5	2.86	-2.74	-4.15
4,213.0	6.33	125.20	4,153.7	-369.9	446.6	456.3	4.10	-4.02	-5.80
4,308.0	3.08	126.78	4,248.4	-374.5	452.9	462.7	3.42	-3.42	1.66
4,402.0	1.76	123.44	4,342.3	-376.8	456.2	466.0	1.41	-1.40	-3.55
4,496.0	0.53	231.19	4,436.3	-377.9	457.0	466.9	2.11	-1.31	114.63
4,590.0	0.88	177.75	4,530.3	-378.8	456.7	466.6	0.75	0.37	-56.85
4,684.0	0.97	179.16	4,624.3	-380.4	456.8	466.7	0.10	0.10	1.50
4,779.0	1.67	290.43	4,719.3	-380.7	455.5	465.4	2.33	0.74	117.13
4,874.0	1.67	213.61	4,814.2	-381.4	453.4	463.4	2.18	0.00	-80.86
4,991.0	2.37	337.89	4,931.2	-380.5	451.6	461.5	3.07	0.60	106.22
5,086.0	2.37	323.48	5,026.1	-377.1	449.6	459.5	0.63	0.00	-15.17

Company:	Bayswater Exploration & Production, LLC	Local Co-ordinate Reference:	Well COT EAST P-30-29HN
Project:	SEC.30-T7N-R66W	TVD Reference:	WELL @ 4971.0ft (Original Well Elev)
Site:	COT 30J Pad Sec.30-T7N-R66W	MD Reference:	WELL @ 4971.0ft (Original Well Elev)
Well:	COT EAST P-30-29HN	North Reference:	True
Wellbore:	COT EAST P-30-29HN Wellbore #1	Survey Calculation Method:	Minimum Curvature
Design:	COT EAST P-30-29HN Wellbore #1	Database:	US_EDM

Survey									
Measured Depth (ft)	Inclination (°)	Azimuth (°)	Vertical Depth (ft)	+N/-S (ft)	+E/-W (ft)	Vertical Section (ft)	Dogleg Rate (°/100usft)	Build Rate (°/100usft)	Turn Rate (°/100usft)
5,180.0	0.88	308.01	5,120.1	-375.1	447.9	457.7	1.64	-1.59	-16.46
5,275.0	0.62	349.49	5,215.1	-374.2	447.2	457.0	0.61	-0.27	43.66
5,369.0	0.62	9.00	5,309.1	-373.2	447.2	457.0	0.22	0.00	20.76
5,464.0	0.44	20.96	5,404.1	-372.3	447.4	457.2	0.22	-0.19	12.59
5,558.0	0.26	4.96	5,498.0	-371.8	447.6	457.3	0.22	-0.19	-17.02
5,653.0	0.26	6.72	5,593.0	-371.3	447.6	457.3	0.01	0.00	1.85
5,748.0	0.35	355.12	5,688.0	-370.8	447.6	457.3	0.11	0.09	-12.21
5,843.0	0.35	300.45	5,783.0	-370.4	447.4	457.0	0.34	0.00	-57.55
5,937.0	0.26	199.73	5,877.0	-370.5	447.0	456.7	0.50	-0.10	-107.15
6,032.0	0.35	92.68	5,972.0	-370.7	447.3	456.9	0.52	0.09	-112.68
6,126.0	0.35	233.83	6,066.0	-370.9	447.3	457.0	0.70	0.00	150.16
6,220.0	0.26	55.41	6,160.0	-370.9	447.3	456.9	0.65	-0.10	-189.81
6,315.0	0.62	101.11	6,255.0	-370.9	447.9	457.6	0.50	0.38	48.11
6,410.0	1.14	147.52	6,350.0	-371.8	449.0	458.7	0.89	0.55	48.85
6,504.0	1.32	158.42	6,444.0	-373.6	449.9	459.6	0.31	0.19	11.60
6,599.0	0.97	153.50	6,539.0	-375.3	450.6	460.4	0.38	-0.37	-5.18
6,693.0	5.72	80.20	6,632.8	-375.2	455.6	465.4	5.87	5.05	-77.98
6,788.0	12.05	84.94	6,726.6	-373.5	470.1	479.9	6.70	6.66	4.99
6,883.0	13.63	78.26	6,819.3	-370.4	491.0	500.6	2.28	1.66	-7.03
6,978.0	25.59	77.56	6,908.6	-363.7	522.1	531.6	12.59	12.59	-0.74
7,072.0	33.77	91.62	6,990.3	-360.0	568.2	577.5	11.38	8.70	14.96
7,167.0	46.69	88.99	7,062.7	-360.2	629.4	638.7	13.71	13.60	-2.77
7,261.0	58.92	91.27	7,119.4	-360.5	704.1	713.4	13.15	13.01	2.43
7,355.0	67.01	91.97	7,162.1	-362.8	787.7	797.1	8.63	8.61	0.74
7,450.0	75.18	89.86	7,192.8	-364.2	877.5	886.9	8.85	8.60	-2.22
7,545.0	82.04	89.51	7,211.6	-363.7	970.6	979.9	7.23	7.22	-0.37
7,596.4	85.50	89.80	7,217.2	-363.4	1,021.7	1,031.0	6.76	6.73	0.57
Cross DSU Setback - 1834'FSL & 2393'FEL, Sec.30									
7,639.0	88.37	90.04	7,219.4	-363.3	1,064.2	1,073.5	6.76	6.73	0.56
7,733.0	90.31	89.69	7,220.5	-363.1	1,158.2	1,167.4	2.10	2.06	-0.37
7,828.0	90.84	88.46	7,219.6	-361.6	1,253.2	1,262.3	1.41	0.56	-1.29
7,923.0	91.63	87.75	7,217.5	-358.5	1,348.1	1,357.1	1.12	0.83	-0.75
8,018.0	89.96	88.81	7,216.2	-355.6	1,443.0	1,452.0	2.08	-1.76	1.12
8,113.0	90.84	88.28	7,215.5	-353.2	1,538.0	1,546.8	1.08	0.93	-0.56
8,207.0	89.87	88.99	7,215.0	-351.0	1,632.0	1,640.7	1.28	-1.03	0.76
8,302.0	90.31	88.99	7,214.8	-349.3	1,727.0	1,735.6	0.46	0.46	0.00
8,397.0	88.64	90.22	7,215.7	-348.6	1,822.0	1,830.6	2.18	-1.76	1.29
8,492.0	89.16	90.22	7,217.5	-349.0	1,916.9	1,925.5	0.55	0.55	0.00
8,586.0	89.69	90.04	7,218.4	-349.2	2,010.9	2,019.5	0.60	0.56	-0.19
8,680.0	90.40	89.69	7,218.4	-349.0	2,104.9	2,113.4	0.84	0.76	-0.37
8,775.0	91.19	89.51	7,217.1	-348.3	2,199.9	2,208.4	0.85	0.83	-0.19
8,870.0	89.52	89.51	7,216.5	-347.5	2,294.9	2,303.3	1.76	-1.76	0.00
8,964.0	90.04	89.16	7,216.8	-346.4	2,388.9	2,397.3	0.67	0.55	-0.37

Company:	Bayswater Exploration & Production, LLC	Local Co-ordinate Reference:	Well COT EAST P-30-29HN
Project:	SEC.30-T7N-R66W	TVD Reference:	WELL @ 4971.0ft (Original Well Elev)
Site:	COT 30J Pad Sec.30-T7N-R66W	MD Reference:	WELL @ 4971.0ft (Original Well Elev)
Well:	COT EAST P-30-29HN	North Reference:	True
Wellbore:	COT EAST P-30-29HN Wellbore #1	Survey Calculation Method:	Minimum Curvature
Design:	COT EAST P-30-29HN Wellbore #1	Database:	US_EDM

Survey									
Measured Depth (ft)	Inclination (°)	Azimuth (°)	Vertical Depth (ft)	+N/-S (ft)	+E/-W (ft)	Vertical Section (ft)	Dogleg Rate (°/100usft)	Build Rate (°/100usft)	Turn Rate (°/100usft)
9,059.0	90.84	89.16	7,216.1	-345.0	2,483.9	2,492.2	0.84	0.84	0.00
9,154.0	89.25	88.28	7,216.0	-342.9	2,578.9	2,587.1	1.91	-1.67	-0.93
9,248.0	89.78	88.11	7,216.8	-339.9	2,672.8	2,680.9	0.59	0.56	-0.18
9,343.0	89.96	87.40	7,217.0	-336.2	2,767.7	2,775.7	0.77	0.19	-0.75
9,437.0	89.08	89.34	7,217.8	-333.5	2,861.7	2,869.5	2.27	-0.94	2.06
9,531.0	89.52	89.16	7,219.0	-332.3	2,955.7	2,963.5	0.51	0.47	-0.19
9,626.0	89.87	88.46	7,219.5	-330.3	3,050.7	3,058.3	0.82	0.37	-0.74
9,721.0	90.22	88.11	7,219.4	-327.5	3,145.6	3,153.2	0.52	0.37	-0.37
9,816.0	91.01	87.93	7,218.4	-324.2	3,240.5	3,248.0	0.85	0.83	-0.19
9,910.0	89.25	88.46	7,218.2	-321.3	3,334.5	3,341.8	1.96	-1.87	0.56
10,005.0	90.04	87.40	7,218.8	-317.8	3,429.4	3,436.7	1.39	0.83	-1.12
10,100.0	90.48	90.22	7,218.3	-315.8	3,524.4	3,531.5	3.00	0.46	2.97
10,195.0	90.84	89.86	7,217.2	-315.9	3,619.4	3,626.5	0.54	0.38	-0.38
10,289.0	88.64	90.39	7,217.7	-316.1	3,713.4	3,720.5	2.41	-2.34	0.56
10,384.0	89.60	90.39	7,219.1	-316.8	3,808.4	3,815.4	1.01	1.01	0.00
10,478.0	90.84	90.74	7,218.8	-317.7	3,902.4	3,909.4	1.37	1.32	0.37
10,573.0	89.52	89.69	7,218.5	-318.0	3,997.4	4,004.4	1.78	-1.39	-1.11
10,668.0	90.31	89.69	7,218.6	-317.5	4,092.4	4,099.3	0.83	0.83	0.00
10,763.0	91.10	89.51	7,217.4	-316.9	4,187.3	4,194.3	0.85	0.83	-0.19
10,857.0	88.99	88.99	7,217.4	-315.6	4,281.3	4,288.2	2.31	-2.24	-0.55
10,952.0	89.43	88.28	7,218.7	-313.4	4,376.3	4,383.1	0.88	0.46	-0.75
11,046.0	89.96	88.11	7,219.2	-310.4	4,470.2	4,476.9	0.59	0.56	-0.18
11,140.0	90.75	87.93	7,218.6	-307.2	4,564.2	4,570.7	0.86	0.84	-0.19
11,235.0	88.90	88.63	7,218.9	-304.3	4,659.1	4,665.6	2.08	-1.95	0.74
11,330.0	89.43	87.75	7,220.3	-301.3	4,754.1	4,760.4	1.08	0.56	-0.93
11,425.0	89.96	87.58	7,220.8	-297.4	4,849.0	4,855.2	0.59	0.56	-0.18
11,519.0	89.69	88.81	7,221.1	-294.5	4,943.0	4,949.0	1.34	-0.29	1.31
11,614.0	90.40	88.46	7,221.0	-292.2	5,037.9	5,043.9	0.83	0.75	-0.37
11,709.0	91.63	87.58	7,219.3	-288.9	5,132.9	5,138.7	1.59	1.29	-0.93
11,804.0	90.48	90.57	7,217.5	-287.4	5,227.8	5,233.6	3.37	-1.21	3.15
11,899.0	91.54	90.22	7,215.9	-288.1	5,322.8	5,328.6	1.18	1.12	-0.37
11,993.0	89.52	90.74	7,215.0	-288.9	5,416.8	5,422.5	2.22	-2.15	0.55
12,088.0	89.34	89.34	7,215.9	-288.9	5,511.8	5,517.5	1.49	-0.19	-1.47
12,182.0	89.96	89.99	7,216.5	-288.4	5,605.8	5,611.4	0.96	0.66	0.69
12,277.0	90.04	87.75	7,216.5	-286.5	5,700.7	5,706.3	2.36	0.08	-2.36
12,372.0	90.75	89.69	7,215.9	-284.4	5,795.7	5,801.2	2.17	0.75	2.04
12,467.0	91.28	89.34	7,214.2	-283.6	5,890.7	5,896.1	0.67	0.56	-0.37
12,562.0	92.07	89.16	7,211.4	-282.3	5,985.6	5,991.0	0.85	0.83	-0.19
12,656.0	90.31	89.34	7,209.5	-281.1	6,079.6	6,084.9	1.88	-1.87	0.19
12,751.0	90.84	88.81	7,208.5	-279.6	6,174.6	6,179.8	0.79	0.56	-0.56
12,845.0	91.36	88.46	7,206.7	-277.3	6,268.6	6,273.7	0.67	0.55	-0.37
12,940.0	89.43	88.46	7,206.0	-274.8	6,363.5	6,368.6	2.03	-2.03	0.00
13,035.0	90.31	88.11	7,206.3	-271.9	6,458.5	6,463.4	1.00	0.93	-0.37
13,129.0	89.52	88.99	7,206.4	-269.6	6,552.4	6,557.3	1.26	-0.84	0.94

Company:	Bayswater Exploration & Production, LLC	Local Co-ordinate Reference:	Well COT EAST P-30-29HN
Project:	SEC.30-T7N-R66W	TVD Reference:	WELL @ 4971.0ft (Original Well Elev)
Site:	COT 30J Pad Sec.30-T7N-R66W	MD Reference:	WELL @ 4971.0ft (Original Well Elev)
Well:	COT EAST P-30-29HN	North Reference:	True
Wellbore:	COT EAST P-30-29HN Wellbore #1	Survey Calculation Method:	Minimum Curvature
Design:	COT EAST P-30-29HN Wellbore #1	Database:	US_EDM

Survey									
Measured Depth (ft)	Inclination (°)	Azimuth (°)	Vertical Depth (ft)	+N/-S (ft)	+E/-W (ft)	Vertical Section (ft)	Dogleg Rate (°/100usft)	Build Rate (°/100usft)	Turn Rate (°/100usft)
13,224.0	89.87	89.16	7,206.9	-268.0	6,647.4	6,652.2	0.41	0.37	0.18
13,319.0	89.96	88.63	7,207.0	-266.2	6,742.4	6,747.1	0.57	0.09	-0.56
13,413.0	90.31	89.34	7,206.8	-264.5	6,836.4	6,841.0	0.84	0.37	0.76
13,507.0	89.96	90.04	7,206.6	-264.0	6,930.4	6,934.9	0.83	-0.37	0.74
13,602.0	91.01	90.04	7,205.8	-264.1	7,025.4	7,029.9	1.11	1.11	0.00
13,696.0	91.54	89.69	7,203.7	-263.9	7,119.4	7,123.8	0.68	0.56	-0.37
13,791.0	92.07	89.16	7,200.7	-262.9	7,214.3	7,218.7	0.79	0.56	-0.56
13,886.0	89.87	88.99	7,199.1	-261.4	7,309.3	7,313.6	2.32	-2.32	-0.18
13,981.0	89.87	88.81	7,199.3	-259.5	7,404.3	7,408.5	0.19	0.00	-0.19
14,075.0	90.31	88.28	7,199.2	-257.2	7,498.2	7,502.4	0.73	0.47	-0.56
14,170.0	90.84	88.11	7,198.2	-254.2	7,593.2	7,597.2	0.59	0.56	-0.18
14,264.0	91.28	87.93	7,196.5	-250.9	7,687.1	7,691.0	0.51	0.47	-0.19
14,359.0	89.69	87.93	7,195.7	-247.5	7,782.0	7,785.9	1.67	-1.67	0.00
14,453.0	90.22	87.58	7,195.7	-243.8	7,876.0	7,879.7	0.68	0.56	-0.37
14,548.0	88.72	88.99	7,196.6	-241.0	7,970.9	7,974.5	2.17	-1.58	1.48
14,642.0	89.16	88.63	7,198.4	-239.0	8,064.9	8,068.4	0.60	0.47	-0.38
14,737.0	89.87	88.99	7,199.2	-237.0	8,159.8	8,163.3	0.84	0.75	0.38
14,832.0	90.48	88.46	7,198.9	-234.9	8,254.8	8,258.1	0.85	0.64	-0.56
14,926.0	91.19	88.28	7,197.5	-232.3	8,348.8	8,352.0	0.78	0.76	-0.19
15,021.0	89.78	88.81	7,196.7	-229.8	8,443.7	8,446.9	1.59	-1.48	0.56
15,116.0	90.04	88.46	7,196.9	-227.6	8,538.7	8,541.7	0.46	0.27	-0.37
15,193.0	90.48	88.28	7,196.5	-225.4	8,615.7	8,618.6	0.62	0.57	-0.23
15,253.0	90.48	88.28	7,196.0	-223.6	8,675.6	8,678.5	0.00	0.00	0.00

Design Targets									
Target Name	Dip Angle (°)	Dip Dir. (°)	TVD (ft)	+N/-S (ft)	+E/-W (ft)	Northing (usft)	Easting (usft)	Latitude	Longitude
SHL 2212'FSL & 2004'F1 - hit/miss target - Shape - Point	0.00	0.00	1.0	0.0	0.0	1,441,778.87	3,187,646.93	40.544122	-104.824806
BHL 1841'FSL & 150'FE - survey hits target center - Point	0.00	0.00	7,196.0	-230.2	8,676.4	1,441,614.77	3,196,324.56	40.543486	-104.793588
- survey misses target center by 6.6ft at 15253.0ft MD (7196.0 TVD, -223.6 N, 8675.6 E)									

Survey Annotations				
Measured Depth (ft)	Vertical Depth (ft)	Local Coordinates		Comment
		+N/-S (ft)	+E/-W (ft)	
7,596.4	7,217.2	-363.4	1,021.7	Cross DSU Setback - 1834'FSL & 2393'FEL, Sec.30

Checked By: _____	Approved By: _____	Date: _____
-------------------	--------------------	-------------