



Crestone Peak Resources

Schlumberger

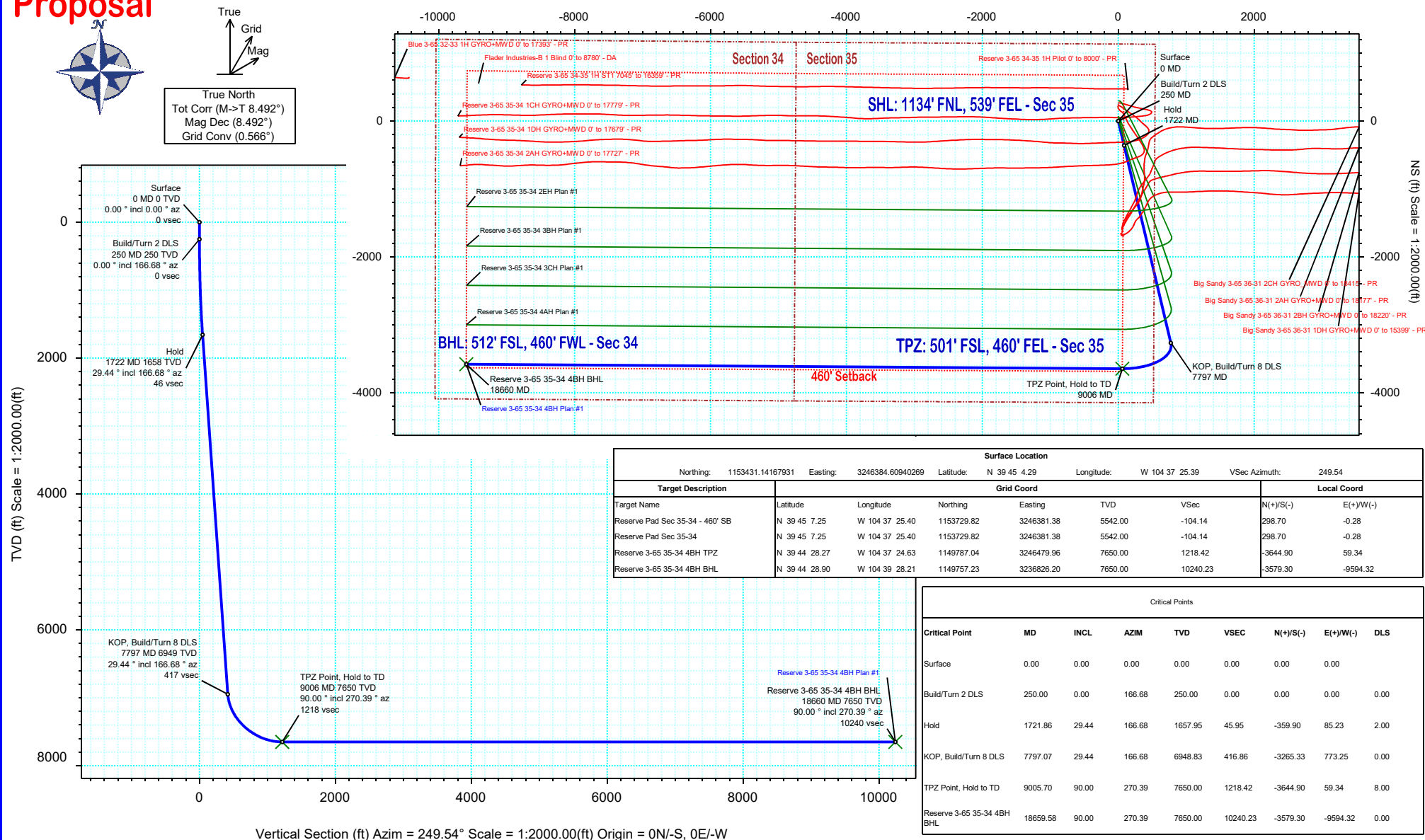
Plan 1

Borehole:	Well:	Field:	Structure:
Original Hole	Reserve 3-65 35-34 4BH	CO, Adams County (NAD 83 NZ)	Crestone Peak 35-03S-65W (Reserve Pad)

Gravity & Magnetic Parameters					Surface Location					NAD83 Colorado State Plane, Northern Zone, US Feet					Miscellaneous			
Model:	HDGM 2020	Dip:	66.335°	Date:	14-May-2020	Lat:	N 39 45 4.29	Northing:	1153431.14ftUS	Grid Conv:	0.5662°	Slot:	Reserve 3-65 35-34 4BH	TVD Ref:	KB 28ft(5542ft above MSL)			
MagDec:	8.492°	FS:	51582.76nT	Gravity FS:	998.931mgn (9.80665 Based)	Lon:	W 104 37 25.39	Easting:	3246384.61ftUS	Scale Fact:	0.99999461	Plan:	Reserve 3-65 35-34 4BH Plan #1					

Proposal

EW (ft) Scale = 1:2000.00(ft)



Vertical Section (ft) Azim = 249.54° Scale = 1:2000.00(ft) Origin = 0N/-S, 0E/-W

Reserve 3-65 35-34 4BH Plan #1 Proposal Geodetic Report

(Def Plan)

Report Date: May 14, 2020 - 03:53 PM
 Client: Crestone Peak Resources
 Field: CO, Adams County (NAD 83 NZ)
 Structure / Slot: Crestone Peak 35-03S-65W (Reserve Pad) / Reserve 3-65 35-34 4BH
 Well: Reserve 3-65 35-34 4BH
 Borehole: Original Hole
 UWI / API#: Unknown / Unknown
 Survey Name: Reserve 3-65 35-34 4BH Plan #1
 Survey Date: March 09, 2020
 Tort / AHD / DDI / ERD Ratio: 126.127 ° / 13908.740 ft / 6.631 / 1.818
 Coordinate Reference System: NAD83 Colorado State Plane, Northern Zone, US Feet
 Location Lat / Long: N 39° 45' 4.29480", W 104° 37' 25.39200"
 Location Grid N/E Y/X: N 1153431.142 ftUS, E 3246384.609 ftUS
 CRS Grid Convergence Angle: 0.5662 °
 Grid Scale Factor: 0.99999461
 Version / Patch: 2.10.787.0

Survey / DLS Computation: Minimum Curvature / Lubinski
 Vertical Section Azimuth: 249.541 ° (True North)
 Vertical Section Origin: 0.000 ft, 0.000 ft
 TVD Reference Datum: KB 28ft
 TVD Reference Elevation: 5542.000 ft above MSL
 Seabed / Ground Elevation: 5514.000 ft above MSL
 Magnetic Declination: 8.492 °
 Total Gravity Field Strength: 998.9315mgn (9.80665 Based)
 Gravity Model: GARM
 Total Magnetic Field Strength: 51582.760 nT
 Magnetic Dip Angle: 66.335 °
 Declination Date: May 14, 2020
 Magnetic Declination Model: HDGM 2020
 North Reference: True North
 Grid Convergence Used: 0.0000 °
 Total Corr Mag North→True North: 8.4919 °
 Local Coord Referenced To: Well Head

Comments	MD (ft)	Incl (°)	Azim True (°)	TVD (ft)	VSEC (ft)	NS (ft)	EW (ft)	DLS (°/100ft)	Northing (ftUS)	Easting (ftUS)	Latitude (°)	Longitude (°)
Surface	0.00	0.00	0.00	0.00	0.00	0.00	0.00	N/A	1153431.14	3246384.61	39.751193	-104.623720
	100.00	0.00	166.68	100.00	0.00	0.00	0.00	0.00	1153431.14	3246384.61	39.751193	-104.623720
	200.00	0.00	166.68	200.00	0.00	0.00	0.00	0.00	1153431.14	3246384.61	39.751193	-104.623720
Build/Turn 2 DLS	250.00	0.00	166.68	250.00	0.00	0.00	0.00	0.00	1153431.14	3246384.61	39.751193	-104.623720
	300.00	1.00	166.68	300.00	0.05	-0.42	0.10	2.00	1153430.72	3246384.71	39.751192	-104.623720
	400.00	3.00	166.68	399.93	0.49	-3.82	0.90	2.00	1153427.33	3246385.55	39.751183	-104.623717
	500.00	5.00	166.68	499.68	1.35	-10.61	2.51	2.00	1153420.56	3246387.23	39.751164	-104.623711
	600.00	7.00	166.68	599.13	2.65	-20.78	4.92	2.00	1153410.41	3246389.74	39.751136	-104.623702
	700.00	9.00	166.68	698.15	4.38	-34.32	8.13	2.00	1153396.90	3246393.08	39.751099	-104.623691
	800.00	11.00	166.68	796.63	6.54	-51.22	12.13	2.00	1153380.05	3246397.24	39.751052	-104.623677
	900.00	13.00	166.68	894.44	9.12	-71.45	16.92	2.00	1153359.86	3246402.23	39.750997	-104.623660
	1000.00	15.00	166.68	991.46	12.13	-94.99	22.49	2.00	1153336.38	3246408.04	39.750932	-104.623640
	1100.00	17.00	166.68	1087.58	15.55	-121.81	28.85	2.00	1153309.62	3246414.66	39.750859	-104.623617
	1200.00	19.00	166.68	1182.68	19.39	-151.88	35.97	2.00	1153279.63	3246422.07	39.750776	-104.623592
	1300.00	21.00	166.68	1276.65	23.64	-185.16	43.85	2.00	1153246.43	3246430.28	39.750685	-104.623564
	1400.00	23.00	166.68	1369.36	28.29	-221.61	52.48	2.00	1153210.06	3246439.27	39.750585	-104.623533
	1500.00	25.00	166.68	1460.71	33.34	-261.18	61.85	2.00	1153170.58	3246449.04	39.750476	-104.623500
	1600.00	27.00	166.68	1550.59	38.79	-303.84	71.95	2.00	1153128.03	3246459.56	39.750359	-104.623464
	1700.00	29.00	166.68	1638.88	44.62	-349.52	82.77	2.00	1153082.46	3246470.83	39.750233	-104.623426
	1721.86	29.44	166.68	1657.95	45.95	-359.90	85.23	2.00	1153072.10	3246473.39	39.750205	-104.623417
	1800.00	29.44	166.68	1726.01	50.72	-397.28	94.08	0.00	1153034.82	3246482.61	39.750102	-104.623385
	1900.00	29.44	166.68	1813.10	56.82	-445.10	105.40	0.00	1152987.11	3246494.40	39.749971	-104.623345
	2000.00	29.44	166.68	1900.19	62.93	-492.92	116.73	0.00	1152939.40	3246506.20	39.749840	-104.623305
	2100.00	29.44	166.68	1987.28	69.03	-540.75	128.05	0.00	1152891.69	3246518.00	39.749709	-104.623265
	2200.00	29.44	166.68	2074.37	75.14	-588.57	139.38	0.00	1152843.98	3246529.80	39.749577	-104.623224
	2300.00	29.44	166.68	2161.46	81.24	-636.40	150.70	0.00	1152796.27	3246541.59	39.749446	-104.623184
	2400.00	29.44	166.68	2248.54	87.35	-684.22	162.03	0.00	1152748.56	3246553.39	39.749315	-104.623144
	2500.00	29.44	166.68	2335.63	93.46	-732.04	173.35	0.00	1152700.85	3246565.19	39.749183	-104.623103
	2600.00	29.44	166.68	2422.72	99.56	-779.87	184.68	0.00	1152653.14	3246576.98	39.749052	-104.623063
	2700.00	29.44	166.68	2509.81	105.67	-827.69	196.00	0.00	1152605.43	3246588.78	39.748921	-104.623023
	2800.00	29.44	166.68	2596.90	111.77	-875.52	207.33	0.00	1152557.72	3246600.58	39.748790	-104.622983
	2900.00	29.44	166.68	2683.99	117.88	-923.34	218.65	0.00	1152510.01	3246612.38	39.748658	-104.622942
	3000.00	29.44	166.68	2771.08	123.98	-971.17	229.98	0.00	1152462.30	3246624.17	39.748527	-104.622902
	3100.00	29.44	166.68	2858.17	130.09	-1018.99	241.30	0.00	1152414.59	3246635.97	39.748396	-104.622862
	3200.00	29.44	166.68	2945.26	136.19	-1066.81	252.63	0.00	1152366.88	3246647.77	39.748264	-104.622822
	3300.00	29.44	166.68	3032.35	142.30	-1114.64	263.95	0.00	1152319.17	3246659.56	39.748133	-104.622781
	3400.00	29.44	166.68	3119.44	148.40	-1162.46	275.28	0.00	1152271.46	3246671.36	39.748002	-104.622741
	3500.00	29.44	166.68	3206.53	154.51	-1210.29	286.60	0.00	1152223.76	3246683.16	39.747871	-104.622701
	3600.00	29.44	166.68	3293.62	160.61	-1258.11	297.93	0.00	1152176.05	3246694.95	39.747739	-104.622660
	3700.00	29.44	166.68	3380.71	166.72	-1305.94	309.25	0.00	1152128.34	3246706.75	39.747608	-104.622620
	3800.00	29.44	166.68	3467.80	172.83	-1353.76	320.58	0.00	1152080.63	3246718.55	39.747477	-104.622580
	3900.00	29.44	166.68	3554.89	178.93	-1401.58	331.91	0.00	1152032.92	3246730.35	39.747345	-104.622540
	4000.00	29.44	166.68	3641.98	185.04	-1449.41	343.23	0.00	1151985.21	3246742.14	39.747214	-104.622499
	4100.00	29.44	166.68	3729.07	191.14	-1497.23	354.56	0.00	1151937.50	3246753.94	39.747083	-104.622459
	4200.00	29.44	166.68	3816.16	197.25	-1545.06	365.88	0.00	1151889.79	3246765.74	39.746951	-104.622419
	4300.00	29.44	166.68	3903.25	203.35	-1592.88	377.21	0.00	1151842.08	3246777.53	39.746820	-104.622379
	4400.00	29.44	166.68	3990.34	209.46	-1640.70	388.53	0.00	1151794.37	3246789.33	39.746689	-104.622338
	4500.00	29.44	166.68	4077.42	215.56	-1688.53	399.86	0.00	1151746.66	3246801.13	39.746558	-104.622298
	4600.00	29.44	166.68	4164.51	221.67	-1736.35	411.18	0.00	1151698.95	3246812.93	39.746426	-104.622258
	4700.00	29.44	166.68	4251.60	227.77	-1784.18	422.51	0.00	1151651.24	3246824.72	39.746295	-104.622217
	4800.00	29.44	166.68	4338.69	233.88	-1832.00	433.83	0.00	1151603.53	3246836.52	39.746164	-104.622177
	4900.00	29.44	166.68	4425.78	239.98	-1879.83	445.16	0.00	1151555.82	3246848.32	39.746032	-104.622137
	5000.00	29.44	166.68	4512.87	246.09	-1927.65	456.48	0.00	1151508.11	3246860.11	39.745901	-104.622097
	5100.00	29.44	166.68	4599.96	252.20	-1975.47	467.81	0.00	1151460.40	3246871.91	39.745770	-104.622056
	5200.00	29.44	166.68	4687.05	258.30	-2023.30	479.13	0.00	1151412.69	3246883.71	39.745639	-104.622016
	5300.00	29.44	166.68	4774.14	264.41	-2071.12	490.46	0.00	1151364.98	3246895.50	39.745507	-104.621976
	5400.00	29.44	166.68	4861.23	270.51	-2118.95	501.78	0.00	1151317.27	3246907.30	39.745376	-104.621936
	5500.00	29.44	166.68	4948.32	276.62	-2166.77	513.11	0.00	1151269.56	3246919.10	39.745245	-104.621895
	5600.00	29.44	166.68	5035.41	282.72	-2214.60	524.43	0.00	1151221.85	3246930.90	39.745113	-104.621855
	5700.00	29.44	166.68	5122.50	288.83	-2262.42	535.76	0.00	1151174.14	3246942.69	39.744982	-104.621815
	5800.00	29.44	166.68	5209.59	294.93	-2310.24	547.08	0.00	1151126.43	3246954.49	39.744851	-104.621774
	5900.00	29.44	166.68	5296.68	301.04	-2358.07	558.41	0.00	1151078.72	3246966.29	39.744720	-104.621734
	6000.00	29.44	166.68	5383.77	307.14	-2405.89	569.73	0.00	1151031.01	3246978.08	39.744588	-104.621694
	6100.00	29.44	166.68	5470.86	313.25	-2453.72	581.06	0.00	1150983.31	3246989.88	39.744457	-104.621654
	6200.00	29.44	166.68	5557.95	319.35	-2501.54	592.38	0.00	1150935.60	3247001.68	39.744326	-104.621613
	6300.00	29.44	166.68	5645.04	325.46	-2549.36	603.71	0.00	1150887.89	3247013.48	39.744194	-104.621573
	6400.00	29.44	166.68	5732.13	331.57	-2597.19	615.03	0.00	1150840.18	3247025.27	39.744063	-104.621533
	6500.00	29.44	166.68	5819.22	337.67	-2645.01	626.36	0.00	1150792.47	3247037.07	39.743932	-104.621493
	6600.00	29.44	166.68	5906.31	343.78	-2692.84	637.68	0.00	1150744.76	3247048.87	39.743801	-104.621452
	6700.00	29.44	166.68	5993.39	349.88	-2740.66	649.01	0.00	1150697.05	3247060.66	39.743669	-104.621412
	6800.00	29.44	166.68	6080.48	355.99	-2788.49	660.33	0.00	1150649.34	3247072.46	39.743538	-104.621372
	6900.00	29.44	166.68	6167.57	362.09	-2836.31	671.66	0.00	1150601.63	3247084.26	39.743407	-104.621332
	7000.00	29.44	166.68	6254.66	368.20	-2884.13	682.98	0.00	1150553.92	3247096.06	39.743275	-104.621291
	7100.00											

Comments	MD (ft)	Incl (°)	Azim True (°)	TVD (ft)	VSEC (ft)	NS (ft)	EW (ft)	DLS (°/100ft)	Northing (ftUS)	Easting (ftUS)	Latitude (°)	Longitude (°)
	7500.00	29.44	166.68	6690.11	398.72	-3123.26	739.61	0.00	1150315.37	3247155.04	39.742619	-104.621090
	7600.00	29.44	166.68	6777.20	404.83	-3171.08	750.93	0.00	1150267.66	3247166.84	39.742488	-104.621050
	7700.00	29.44	166.68	6864.29	410.94	-3218.90	762.26	0.00	1150219.95	3247178.63	39.742356	-104.621009
KOP, Build/Turn 8 DLS	7797.07	29.44	166.68	6948.83	416.86	-3265.33	773.25	0.00	1150173.64	3247190.09	39.742229	-104.620970
TPZ Point, Hold to TD	7800.00	29.39	167.14	6951.38	417.05	-3266.73	773.58	8.00	1150172.24	3247190.43	39.742225	-104.620969
	7900.00	28.77	183.60	7038.91	430.12	-3314.75	777.53	8.00	1150124.26	3247194.86	39.742093	-104.620955
	8000.00	30.15	199.67	7126.12	456.16	-3362.49	767.56	8.00	1150076.43	3247185.35	39.741962	-104.620991
	8100.00	33.27	213.72	7211.30	494.65	-3409.03	743.84	8.00	1150029.66	3247162.09	39.741834	-104.621075
	8200.00	37.71	225.22	7292.79	544.84	-3453.46	706.84	8.00	1149984.86	3247125.54	39.741713	-104.621206
	8300.00	43.04	234.44	7369.02	605.76	-3494.91	657.29	8.00	1149942.92	3247076.40	39.741599	-104.621383
	8400.00	48.98	241.91	7438.49	676.21	-3532.58	596.15	8.00	1149904.65	3247015.63	39.741495	-104.621600
	8500.00	55.32	248.10	7499.85	754.84	-3565.74	524.60	8.00	1149870.79	3246944.41	39.741404	-104.621855
	8600.00	61.93	253.39	7551.91	840.10	-3593.73	444.04	8.00	1149842.00	3246864.14	39.741327	-104.622141
	8700.00	68.71	258.06	7593.66	930.34	-3616.02	356.04	8.00	1149818.84	3246776.36	39.741266	-104.622454
	8800.00	75.62	262.31	7624.28	1023.80	-3632.17	262.31	8.00	1149801.77	3246682.80	39.741222	-104.622787
	8900.00	82.59	266.30	7643.17	1118.67	-3641.87	164.67	8.00	1149791.10	3246585.26	39.741195	-104.623134
	9000.00	89.60	270.17	7649.98	1213.09	-3644.92	65.03	8.00	1149787.06	3246485.66	39.741187	-104.623489
	9005.70	90.00	270.39	7650.00	1218.42	-3644.90	59.34	8.00	1149787.04	3246479.96	39.741187	-104.623509
	9100.00	90.00	270.39	7650.00	1306.55	-3644.26	-34.96	0.00	1149786.74	3246385.66	39.741189	-104.623844
	9200.00	90.00	270.39	7650.00	1400.00	-3643.58	-134.96	0.00	1149786.44	3246285.66	39.741191	-104.624200
	9300.00	90.00	270.39	7650.00	1493.45	-3642.90	-234.96	0.00	1149786.13	3246185.66	39.741192	-104.624556
	9400.00	90.00	270.39	7650.00	1586.91	-3642.22	-334.96	0.00	1149785.82	3246085.66	39.741194	-104.624911
	9500.00	90.00	270.39	7650.00	1680.36	-3641.54	-434.95	0.00	1149785.51	3245985.66	39.741196	-104.625267
	9600.00	90.00	270.39	7650.00	1773.81	-3640.86	-534.95	0.00	1149785.20	3245885.67	39.741198	-104.625622
	9700.00	90.00	270.39	7650.00	1867.26	-3640.18	-634.95	0.00	1149784.89	3245785.67	39.741200	-104.625978
	9800.00	90.00	270.39	7650.00	1960.72	-3639.50	-734.95	0.00	1149784.58	3245685.67	39.741202	-104.626333
	9900.00	90.00	270.39	7650.00	2054.17	-3638.82	-834.94	0.00	1149784.27	3245585.67	39.741204	-104.626689
	10000.00	90.00	270.39	7650.00	2147.62	-3638.14	-934.94	0.00	1149783.97	3245485.67	39.741205	-104.627045
	10100.00	90.00	270.39	7650.00	2241.07	-3637.46	-1034.94	0.00	1149783.66	3245385.67	39.741207	-104.627400
	10200.00	90.00	270.39	7650.00	2334.53	-3636.78	-1134.94	0.00	1149783.35	3245285.67	39.741209	-104.627756
	10300.00	90.00	270.39	7650.00	2427.98	-3636.10	-1234.94	0.00	1149783.04	3245185.67	39.741211	-104.628111
	10400.00	90.00	270.39	7650.00	2521.43	-3635.42	-1334.93	0.00	1149782.73	3245085.68	39.741213	-104.628467
	10500.00	90.00	270.39	7650.00	2614.89	-3634.74	-1434.93	0.00	1149782.42	3244985.68	39.741215	-104.628823
	10600.00	90.00	270.39	7650.00	2708.34	-3634.06	-1534.93	0.00	1149782.11	3244885.68	39.741217	-104.629178
	10700.00	90.00	270.39	7650.00	2801.79	-3633.39	-1634.93	0.00	1149781.81	3244785.68	39.741218	-104.629534
	10800.00	90.00	270.39	7650.00	2895.24	-3632.71	-1734.92	0.00	1149781.50	3244685.68	39.741220	-104.629889
	10900.00	90.00	270.39	7650.00	2988.70	-3632.03	-1834.92	0.00	1149781.19	3244585.68	39.741222	-104.630245
	11000.00	90.00	270.39	7650.00	3082.15	-3631.35	-1934.92	0.00	1149780.88	3244485.68	39.741224	-104.630600
	11100.00	90.00	270.39	7650.00	3175.60	-3630.67	-2034.92	0.00	1149780.57	3244385.68	39.741226	-104.630956
	11200.00	90.00	270.39	7650.00	3269.05	-3629.99	-2134.91	0.00	1149780.26	3244285.68	39.741228	-104.631312
	11300.00	90.00	270.39	7650.00	3362.51	-3629.31	-2234.91	0.00	1149779.95	3244185.69	39.741230	-104.631667
	11400.00	90.00	270.39	7650.00	3455.96	-3628.63	-2334.91	0.00	1149779.64	3244085.69	39.741231	-104.632023
	11500.00	90.00	270.39	7650.00	3549.41	-3627.95	-2434.91	0.00	1149779.34	3243985.69	39.741233	-104.632378
	11600.00	90.00	270.39	7650.00	3642.87	-3627.27	-2534.91	0.00	1149779.03	3243885.69	39.741235	-104.632734
	11700.00	90.00	270.39	7650.00	3736.32	-3626.59	-2634.90	0.00	1149778.72	3243785.69	39.741237	-104.633090
	11800.00	90.00	270.39	7650.00	3829.77	-3625.91	-2734.90	0.00	1149778.41	3243685.69	39.741239	-104.633445
	11900.00	90.00	270.39	7650.00	3923.22	-3625.23	-2834.90	0.00	1149778.10	3243585.69	39.741241	-104.633801
	12000.00	90.00	270.39	7650.00	4016.68	-3624.55	-2934.90	0.00	1149777.79	3243485.69	39.741242	-104.634156
	12100.00	90.00	270.39	7650.00	4110.13	-3623.87	-3034.89	0.00	1149777.48	3243385.70	39.741244	-104.634512
	12200.00	90.00	270.39	7650.00	4203.58	-3623.19	-3134.89	0.00	1149777.17	3243285.70	39.741246	-104.634868
	12300.00	90.00	270.39	7650.00	4297.04	-3622.51	-3234.89	0.00	1149776.87	3243185.70	39.741248	-104.635223
	12400.00	90.00	270.39	7650.00	4390.49	-3621.83	-3334.89	0.00	1149776.56	3243085.70	39.741250	-104.635579
	12500.00	90.00	270.39	7650.00	4483.94	-3621.16	-3434.88	0.00	1149776.25	3242985.70	39.741252	-104.635934
	12600.00	90.00	270.39	7650.00	4577.39	-3620.48	-3534.88	0.00	1149775.94	3242885.70	39.741253	-104.636290
	12700.00	90.00	270.39	7650.00	4670.85	-3619.80	-3634.88	0.00	1149775.63	3242785.70	39.741255	-104.636645
	12800.00	90.00	270.39	7650.00	4764.30	-3619.12	-3734.88	0.00	1149775.32	3242685.70	39.741257	-104.637001
	12900.00	90.00	270.39	7650.00	4857.75	-3618.44	-3834.88	0.00	1149775.01	3242585.71	39.741259	-104.637357
	13000.00	90.00	270.39	7650.00	4951.20	-3617.76	-3934.87	0.00	1149774.70	3242485.71	39.741261	-104.637712
	13100.00	90.00	270.39	7650.00	5044.66	-3617.08	-4034.87	0.00	1149774.40	3242385.71	39.741262	-104.638068
	13200.00	90.00	270.39	7650.00	5138.11	-3616.40	-4134.87	0.00	1149774.09	3242285.71	39.741264	-104.638423
	13300.00	90.00	270.39	7650.00	5231.56	-3615.72	-4234.87	0.00	1149773.78	3242185.71	39.741266	-104.638779
	13400.00	90.00	270.39	7650.00	5325.02	-3615.04	-4334.86	0.00	1149773.47	3242085.71	39.741268	-104.639135
	13500.00	90.00	270.39	7650.00	5418.47	-3614.36	-4434.86	0.00	1149773.16	3241985.71	39.741270	-104.639490
	13600.00	90.00	270.39	7650.00	5511.92	-3613.68	-4534.86	0.00	1149772.85	3241885.71	39.741272	-104.639846
	13700.00	90.00	270.39	7650.00	5605.37	-3613.00	-4634.86	0.00	1149772.54	3241785.72	39.741273	-104.640201
	13800.00	90.00	270.39	7650.00	5698.83	-3612.32	-4734.8					

Comments	MD (ft)	Incl (°)	Azim True (°)	TVD (ft)	VSEC (ft)	NS (ft)	EW (ft)	DLS (°/100ft)	Northing (ftUS)	Easting (ftUS)	Latitude (°)	Longitude (°)
	17900.00	90.00	270.39	7650.00	9530.39	-3584.46	-8834.76	0.00	1149759.58	3237585.77	39.741349	-104.655136
	18000.00	90.00	270.39	7650.00	9623.84	-3583.79	-8934.76	0.00	1149759.27	3237485.77	39.741350	-104.655492
	18100.00	90.00	270.39	7650.00	9717.29	-3583.11	-9034.76	0.00	1149758.96	3237385.77	39.741352	-104.655847
	18200.00	90.00	270.39	7650.00	9810.75	-3582.43	-9134.75	0.00	1149758.65	3237285.77	39.741354	-104.656203
	18300.00	90.00	270.39	7650.00	9904.20	-3581.75	-9234.75	0.00	1149758.34	3237185.77	39.741356	-104.656558
	18400.00	90.00	270.39	7650.00	9997.65	-3581.07	-9334.75	0.00	1149758.03	3237085.77	39.741357	-104.656914
	18500.00	90.00	270.39	7650.00	10091.10	-3580.39	-9434.75	0.00	1149757.72	3236985.77	39.741359	-104.657270
	18600.00	90.00	270.39	7650.00	10184.56	-3579.71	-9534.74	0.00	1149757.41	3236885.77	39.741361	-104.657625
Reserve 3-65 35-34 4BH BHL	18659.58	90.00	270.39	7650.00	10240.23	-3579.30	-9594.32	0.00	1149757.23	3236826.20	39.741362	-104.657837

Survey Type: Def Plan

Survey Error Model: ISCWSA Rev 0 *** 3-D 95.000% Confidence 2.7955 sigma

Survey Program:

Description	Part	MD From (ft)	MD To (ft)	EOU Freq (ft)	Hole Size Casing Diameter (in)	Expected Max Inclination (deg)	Survey Tool Type	Borehole / Survey
	1	0.000	28.000	1/100.000	13.500	9.625	NAL_MWD-NON_SLB-Depth Only	Original Hole / Reserve 3-65 35-34 4BH Plan #1
	1	28.000	2000.000	1/100.000	13.500	9.625	NAL_MWD-NON_SLB	Original Hole / Reserve 3-65 35-34 4BH Plan #1
	1	2000.000	18659.576	1/100.000	8.500	5.500	NAL_MWD_PLUS_0.5_DEG	Original Hole / Reserve 3-65 35-34 4BH Plan #1