

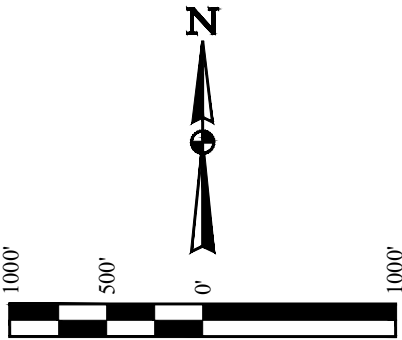
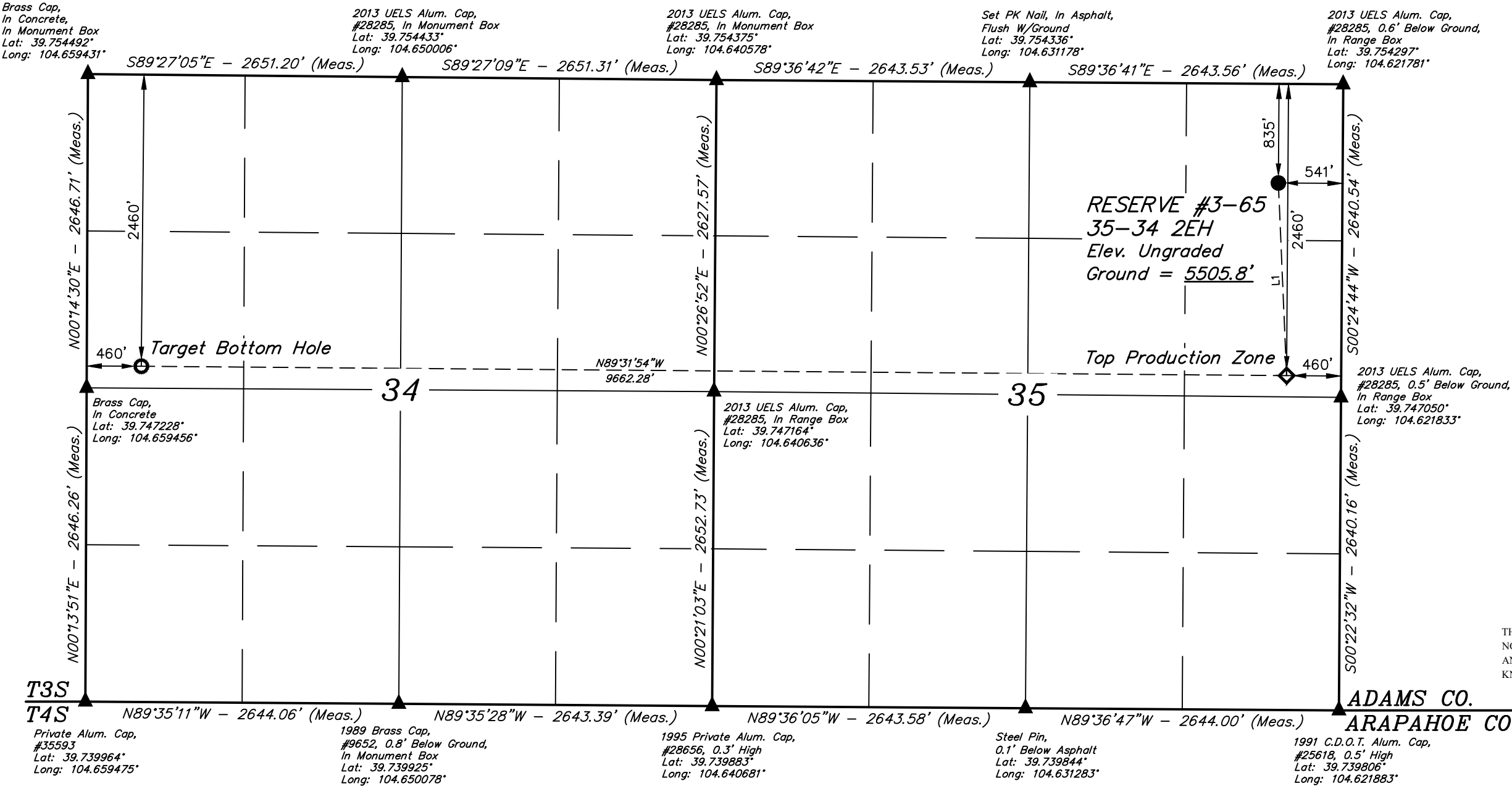
T3S, R65W, 6th P.M.

CRESTONE PEAK RESOURCES OPERATING LLC

RESERVE #3-65 35-34 2EH
NE 1/4 NE 1/4, SECTION 35, T3S, R65W, 6th P.M.
ADAMS COUNTY, COLORADO

BASIS OF BEARINGS
BASIS OF ELEVATION

BENCHMARK 374 LOCATED ON THE SECTION LINE BETWEEN
SECTIONS 12 & 13, T5S, R64W, 6th. P.M., TAKEN FROM 1988
PUBLISHED DATUM BY THE UNITED STATES DEPARTMENT OF
THE INTERIOR, GEOLOGICAL SURVEY AS BEING 6054.61 FEET.



LINE TABLE		
LINE	DIRECTION	LENGTH
L1	S02°27'11"E	1626.51'

CERTIFICATE
THIS IS TO CERTIFY THAT THE ABOVE PLAT WAS PREPARED FROM FIELD
NOTES OF ACTUAL SURVEYS MADE BY ME OR UNDER MY SUPERVISION
AND THAT THE SAME ARE TRUE AND CORRECT TO THE BEST OF MY
KNOWLEDGE AND BELIEF.



PDOP = 1.6

REV: 4 05-07-20 R.J. (TPZ & BHL MOVES)

LEGEND:

- = PROPOSED WELLHEAD.
- ◆ = TOP PRODUCTION ZONE.
- = TARGET BOTTOM HOLE.
- ▲ = SECTION CORNERS LOCATED. (NAD 83)

NOTE:

Distances referenced
on plat to section lines
are perpendicular.

NAD 83 (SURFACE LOCATION)	NAD 83 (TOP PRODUCTION ZONE)	NAD 83 (TARGET BOTTOM HOLE)
LATITUDE = 39°45'07.25" (39.752013)	LATITUDE = 39°44'51.19" (39.747554)	LATITUDE = 39°44'51.83" (39.747729)
LONGITUDE = 104°37'25.40" (104.623721)	LONGITUDE = 104°37'24.48" (104.623466)	LONGITUDE = 104°39'28.14" (104.657818)
NAD 27 (SURFACE LOCATION)	NAD 27 (TOP PRODUCTION ZONE)	NAD 27 (TARGET BOTTOM HOLE)
LATITUDE = 39°45'07.29" (39.752026)	LATITUDE = 39°44'51.24" (39.747567)	LATITUDE = 39°44'51.87" (39.747742)
LONGITUDE = 104°37'23.52" (104.623199)	LONGITUDE = 104°37'22.60" (104.622943)	LONGITUDE = 104°39'26.26" (104.657294)
STATE PLANE NAD 83 (CO. NORTH)	STATE PLANE NAD 83 (CO. NORTH)	STATE PLANE NAD 83 (CO. NORTH)
N: 1153729.84 E: 3246381.24	N: 1152106.18 E: 3246469.09	N: 1152076.58 E: 3236809.64
STATE PLANE NAD 27 (CO. NORTH)	STATE PLANE NAD 27 (CO. NORTH)	STATE PLANE NAD 27 (CO. NORTH)
N: 153733.32 E: 2246534.56	N: 152109.67 E: 2246622.44	N: 152079.94 E: 2236963.08



UELS, LLC
Corporate Office * 85 South 200 East
Vernal, UT 84078 * (435) 789-1017

SURVEYED BY	C.M., O.R.	09-04-18	SCALE
DRAWN BY	K.A.	09-25-18	1" = 1000'

WELL LOCATION PLAT

T3S, R65W, 6th P.M.

CRESTONE PEAK RESOURCES OPERATING LLC

RESERVE #3-65 35-34 2EH, 3BH, 3CH, 4AH & 4BH
NE 1/4 NE 1/4, SECTION 35, T3S, R65W, 6th P.M.
ADAMS COUNTY, COLORADO

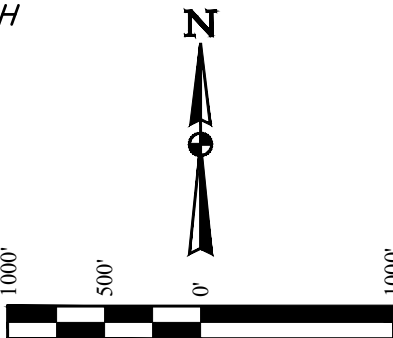
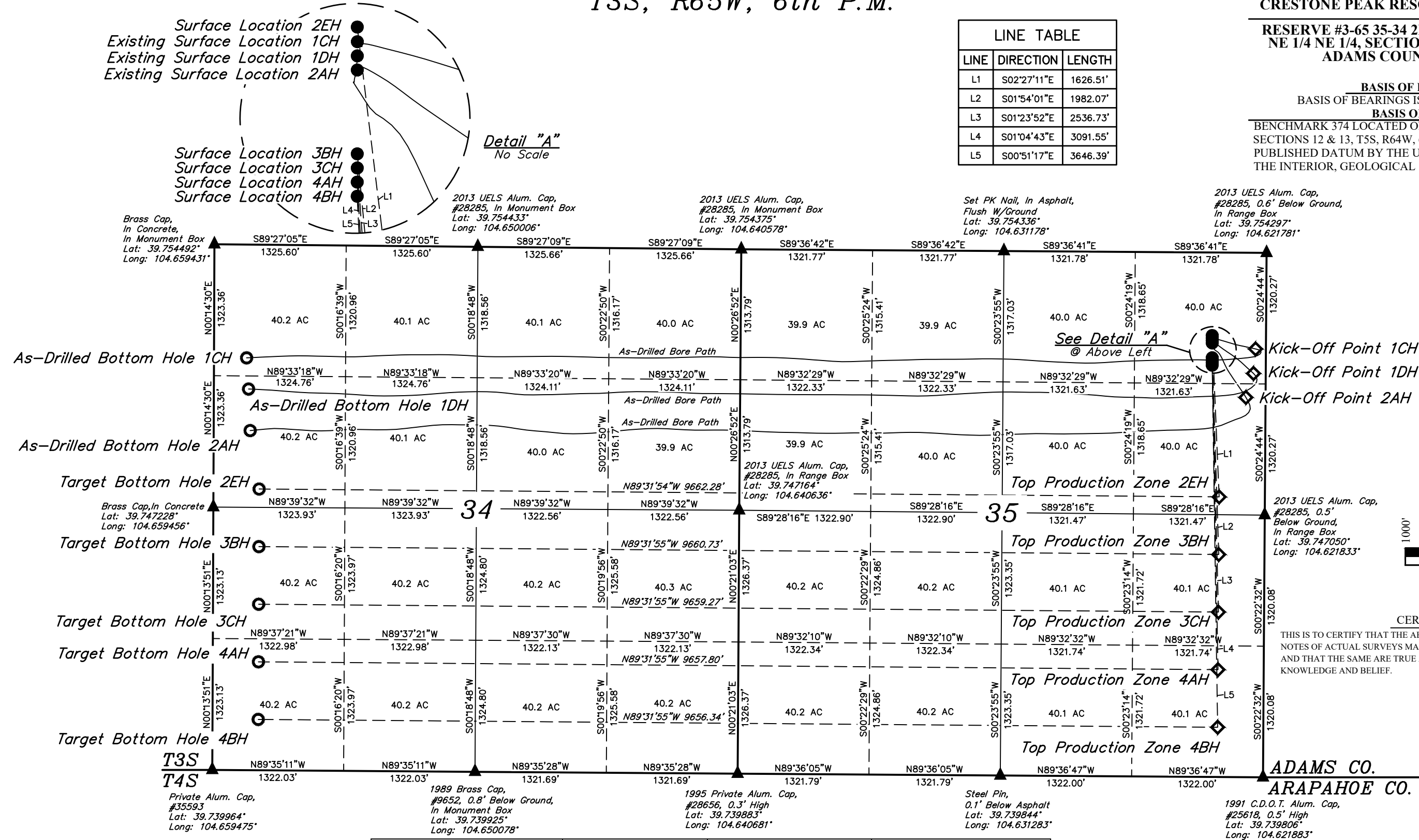
BASIS OF BEARINGS

BASIS OF BEARINGS IS A G.P.S. OBSERVATION

BASIS OF ELEVATION

BENCHMARK 374 LOCATED ON THE SECTION LINE BETWEEN
SECTIONS 12 & 13, T5S, R64W, 6th. P.M., TAKEN FROM 1988
PUBLISHED DATUM BY THE UNITED STATES DEPARTMENT OF
THE INTERIOR, GEOLOGICAL SURVEY AS BEING 6054.61 FEET.

LINE TABLE		
LINE	DIRECTION	LENGTH
L1	S02°27'11"E	1626.51'
L2	S01°54'01"E	1982.07'
L3	S01°23'52"E	2536.73'
L4	S01°04'43"E	3091.55'
L5	S00°51'17"E	3646.39'



CERTIFICATE OF RECORD
THIS IS TO CERTIFY THAT THE ABOVE MAP WAS PREPARED FROM FIELD
NOTES OF ACTUAL SURVEYS MADE BY ME OR UNDER MY SUPERVISION,
AND THAT THE SAME ARE TRUE AND CORRECT TO THE BEST OF MY
KNOWLEDGE AND BELIEF.

REGISTERED LAND SURVEYOR
REGISTRATION NO. 28285
STATE OF COLORADO
85-00-20

LEGEND:
● = PROPOSED WELLHEAD.
◆ = TOP PRODUCTION ZONE.
○ = TARGET BOTTOM HOLE.
▲ = SECTION CORNERS LOCATED. (NAD 83)

WELL	SURFACE LOCATION	TOP PRODUCTION ZONE	TARGET BOTTOM HOLE
#3-65 35-34 2EH	835' FNL 541' FEL	2460' FNL 460' FEL	2460' FNL 460' FWL
#3-65 35-34 3BH	1060' FNL 540' FEL	2241' FSL 460' FEL	2252' FSL 460' FWL
#3-65 35-34 3CH	1085' FNL 539' FEL	1661' FSL 460' FEL	1672' FSL 460' FWL
#3-65 35-34 4AH	1109' FNL 539' FEL	1081' FSL 460' FEL	1092' FSL 460' FWL
#3-65 35-34 4BH	1134' FNL 539' FEL	501' FSL 460' FEL	512' FNL 460' FWL
WELL	SURFACE LOCATION	KICK-OFF POINT	AS-DRILLED BOTTOM HOLE
EXISTING#3-65 35-34 1CH	860' FNL 541' FEL	968' FNL 103' FEL	1140' FNL 328' FWL
EXISTING#3-65 35-34 1DH	886' FNL 541' FEL	1215' FNL 123' FEL	1454' FNL 349' FWL
EXISTING#3-65 35-34 2AH	910' FNL 541' FEL	1460' FNL 196' FEL	1872' FNL 367' FWL

REV: 5 05-07-20 R.J. (TPZ & BHL MOVES)

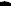
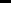
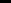
UINALAH
ENGINEERING & LAND SURVEYING

SURVEYED BY C.M., O.R. 09-04-18 SCALE
DRAWN BY K.A. 09-25-18 1" = 1000'

SECTION BREAKDOWN

UELS, LLC
Corporate Office * 85 South 200 East
Vernal, UT 84078 * (435) 789-1017

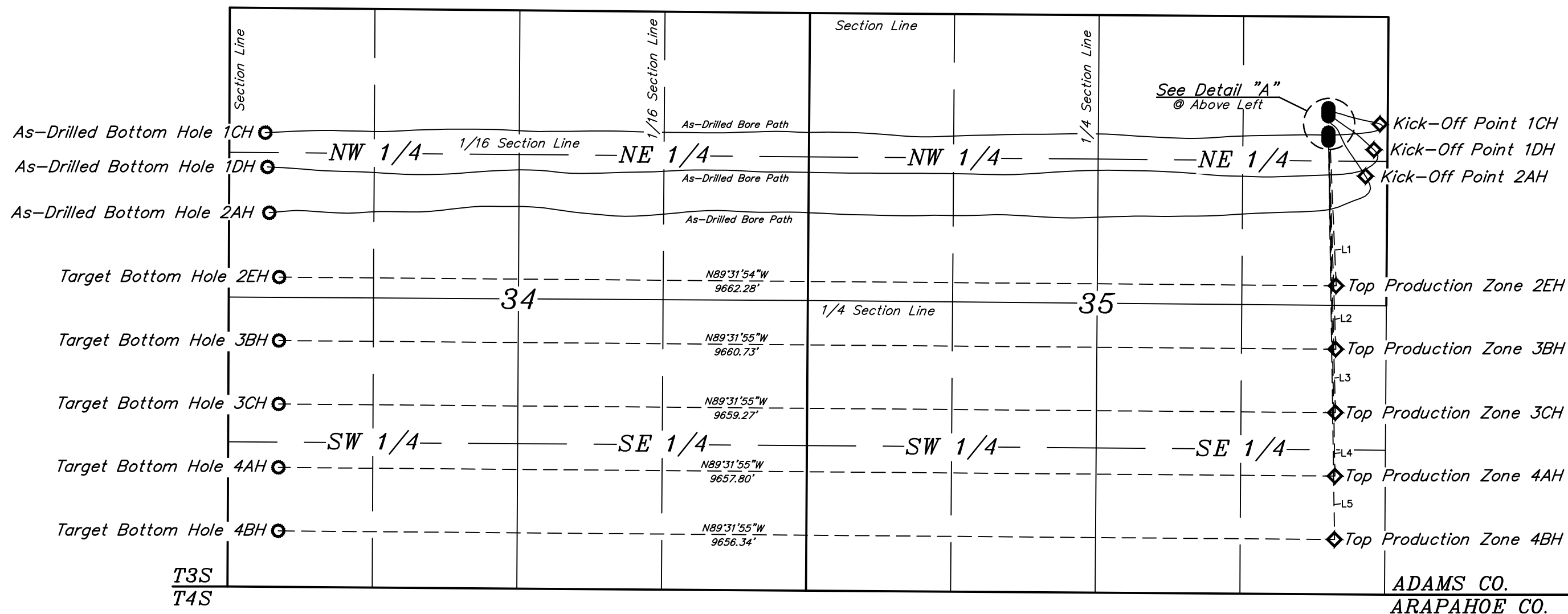
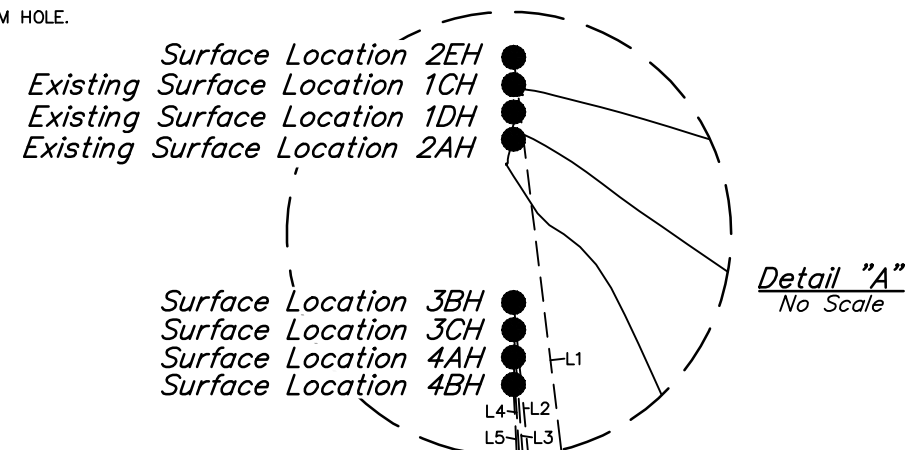


 = WELLHEAD LOCATION.
 = TOP PRODUCTION ZONE.
 = TARGET BOTTOM HOLE.

T3S, R65W, 6th P.M.



LINE TABLE		
LINE	DIRECTION	LENGTH
L1	S02°27'11"E	1626.51'
L2	S01°54'01"E	1982.07'
L3	S01°23'52"E	2536.73'
L4	S01°04'43"E	3091.55'
L5	S00°51'17"E	3646.39'



REV: 5 05-07-20 R.J. (TPZ & BHL MOVES)

NOTES:

CRESTONE PEAK RESOURCES OPERATING LLC

**RESERVE #3-65 35-34 2EH, 3BH, 3CH, 4AH AND 4BH
NE 1/4 NE 1/4, SECTION 35, T3S, R65W, 6th P.M.
ADAMS COUNTY, COLORADO**

SURVEYED BY	C.M., O.R.	09-04-18	SCALE
DRAWN BY	K.A.	09-25-18	1" = 1000'
MULTI-WELL PLAN		FIGURE #4	



UELS, LLC
Corporate Office * 85 South 200 East
Vernal, UT 84078 * (435) 789-1017

PROCEED IN AN EASTERLY DIRECTION FROM THE INTERSECTION OF INTERSTATE 25 & INTERSTATE 70 IN DENVER, COLORADO ALONG INTERSTATE 70 APPROXIMATELY 17.8 MILES TO EXIT 292 TO THE SOUTHEAST; EXIT RIGHT AND PROCEED IN A SOUTHEASTERLY DIRECTION APPROXIMATELY 0.3 MILES TO THE JUNCTION OF THIS ROAD AND HIGHWAY 36/COLFAX AVENUE TO THE NORTH; TURN LEFT AND PROCEED IN A NORTHERLY, THEN EASTERLY DIRECTION APPROXIMATELY 2.3 MILES TO THE JUNCTION OF THIS ROAD AND COUNTY ROAD 23/HUDSON ROAD TO THE NORTH; TURN LEFT AND PROCEED IN A NORTHERLY DIRECTION APPROXIMATELY 0.6 MILES TO THE BEGINNING OF THE PROPOSED ACCESS TO THE WEST; FOLLOW ROAD FLAGS IN A WESTERLY DIRECTION APPROXIMATELY 452' TO THE PROPOSED LOCATION.

TOTAL DISTANCE FROM DENVER, COLORADO TO THE PROPOSED WELL LOCATION IS APPROXIMATELY 21.1 MILES.

REV: 1 03-03-20 J.U. (UPDATE COMPANY NAME)

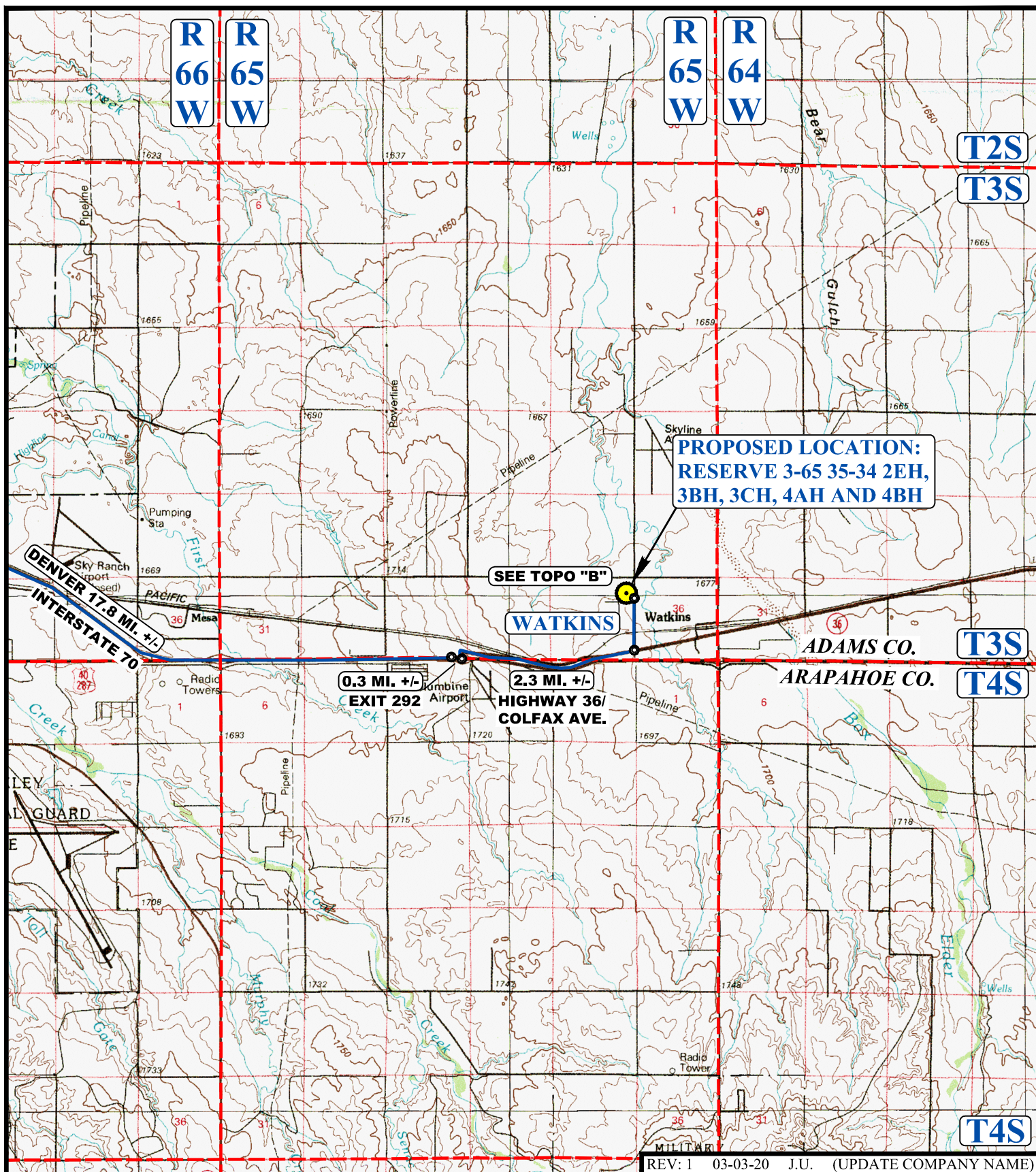
CRESTONE PEAK RESOURCES OPERATING LLC

**RESERVE #3-65 35-34 2EH, 3BH, 3CH, 4AH AND 4BH
NE 1/4 NE 1/4, SECTION 35, T3S, R65W, 6th P.M.
ADAMS COUNTY, COLORADO**



UELS, LLC
Corporate Office * 85 South 200 East
Vernal, UT 84078 * (435) 789-1017

SURVEYED BY	C.M., O.R.	09-04-18	
DRAWN BY	J.L.G.	09-11-18	
ROAD DESCRIPTION			



LEGEND:

 PROPOSED LOCATION



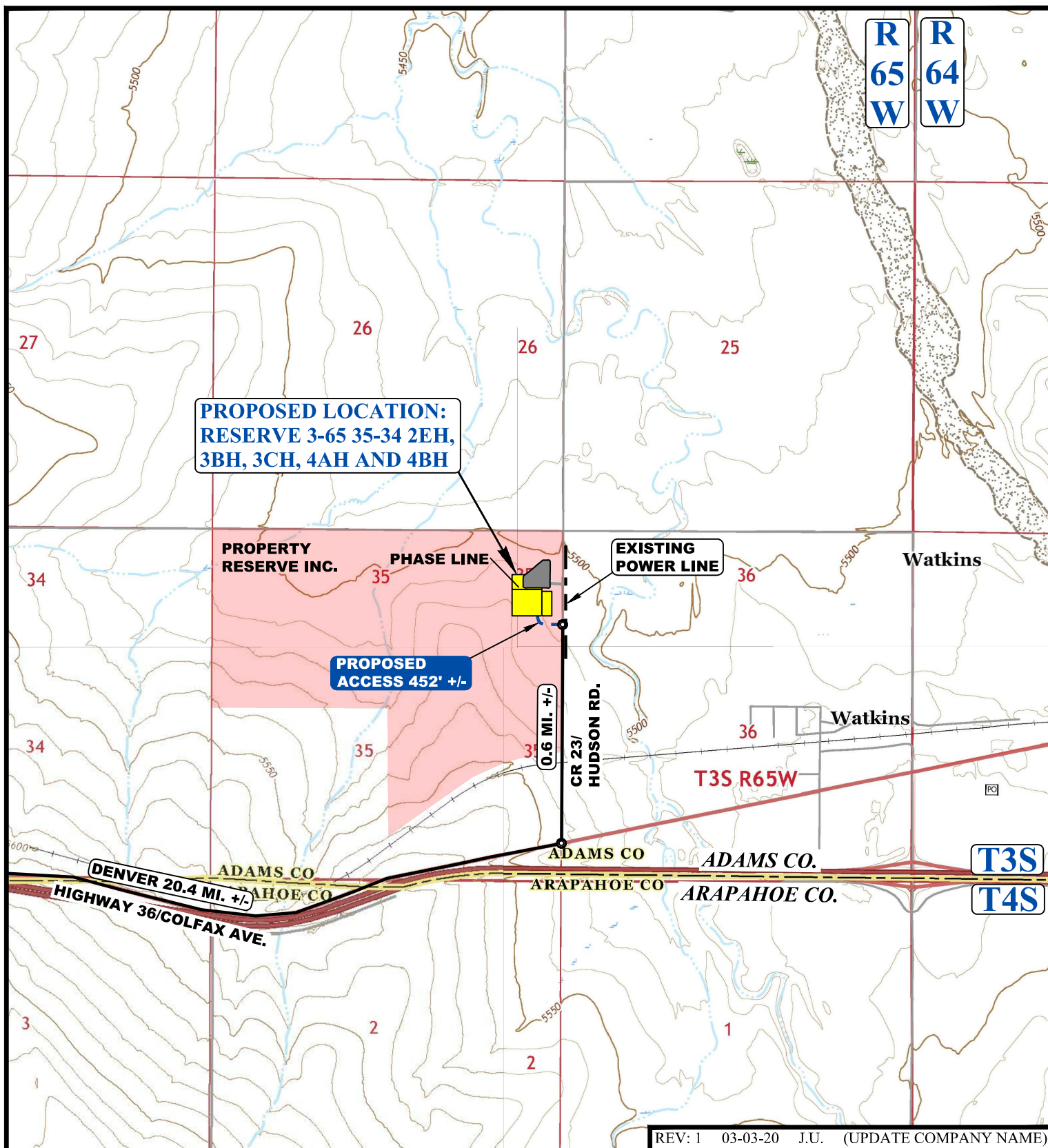
UELS, LLC
Corporate Office * 85 South 200 East
Vernal, UT 84078 * (435) 789-1017

CRESTONE PEAK RESOURCES OPERATING LLC

RESERVE #3-65 35-34 2EH, 3BH, 3CH, 4AH AND 4BH
NE 1/4 NE 1/4, SECTION 35, T3S, R65W, 6th P.M.
ADAMS COUNTY, COLORADO

SURVEYED BY	C.M., O.R.	09-04-18	SCALE
DRAWN BY	J.L.G.	09-11-18	1 : 100,000
ACCESS ROAD MAP			TOPO A

REV: 1 03-03-20 J.U. (UPDATE COMPANY NAME)



NOTE: PARCEL DATA SHOWN HAS BEEN OBTAINED FROM VARIOUS SOURCES AND SHOULD BE USED FOR MAPPING, GRAPHIC AND PLANNING PURPOSES ONLY. NO WARRANTY IS MADE BY UINTAH ENGINEERING AND LAND SURVEYING (UELS) FOR ACCURACY OF THE PARCEL DATA.

LEGEND:

- EXISTING ROAD
- PROPOSED ROAD
- - - EXISTING POWER LINE



CRESTONE PEAK RESOURCES OPERATING LLC

RESERVE #3-65 35-34 2EH, 3BH, 3CH, 4AH AND 4BH
NE 1/4 NE 1/4, SECTION 35, T3S, R65W, 6th P.M.
ADAMS COUNTY, COLORADO

SURVEYED BY	C.M., O.R.	09-04-18	SCALE
DRAWN BY	J.L.G.	09-11-18	1 : 24,000
ACCESS ROAD MAP			TOPO B



UELS, LLC
Corporate Office * 85 South 200 East
Vernal, UT 84078 * (435) 789-1017



PHOTO: VIEW OF REFERENCE AREA

CAMERA ANGLE: NORTHERLY



PHOTO: VIEW OF REFERENCE AREA

CAMERA ANGLE: EASTERLY

REV: 1 03-03-20 J.U. (UPDATE COMPANY NAME)

CRESTONE PEAK RESOURCES OPERATING LLC

**RESERVE #3-65 35-34 2EH, 3BH, 3CH, 4AH AND 4BH
NE 1/4 NE 1/4, SECTION 35, T3S, R65W, 6th P.M.
ADAMS COUNTY, COLORADO**



UELS, LLC
Corporate Office * 85 South 200 East
Vernal, UT 84078 * (435) 789-1017

TAKEN BY	C.M., O.R.	09-04-18	
DRAWN BY	J.L.G.	09-11-18	
REFERENCE AREA PHOTOS			REF 1



PHOTO: VIEW OF REFERENCE AREA

CAMERA ANGLE: SOUTHERLY



PHOTO: VIEW OF REFERENCE AREA

CAMERA ANGLE: WESTERLY

REV: 1 03-03-20 J.U. (UPDATE COMPANY NAME)

CRESTONE PEAK RESOURCES OPERATING LLC

**RESERVE #3-65 35-34 2EH, 3BH, 3CH, 4AH AND 4BH
NE 1/4 NE 1/4, SECTION 35, T3S, R65W, 6th P.M.
ADAMS COUNTY, COLORADO**



UELS, LLC
Corporate Office * 85 South 200 East
Vernal, UT 84078 * (435) 789-1017

TAKEN BY	C.M., O.R.	09-04-18	
DRAWN BY	J.L.G.	09-11-18	
REFERENCE AREA PHOTOS			REF 2