

Inspection Photos

5/04/2020

Operator: TEP ROCKY MOUNTAIN LLC - 96850

Location ID: 335106

Garfield County, CO

Aaron Trujillo

NW Reclamation Specialist

COGCC

Inspection Photos
Operator Name: TEP ROCKY MOUNTAIN LLC - 96850
Location ID: 335106



Photo 1: Photo taken from the southeast end of the Location, facing west. Photos 1-2 provide an overview of the Location from west, to north.



Photo 2: See comments under photo 1.

Inspection Photos

Operator Name: TEP ROCKY MOUNTAIN LLC - 96850

Location ID: 335106



Photo 3: Photo taken from the northwest area of the Location, facing northeast. Photos 3-5 provide an overview of the Location from northeast, east, south, to southwest.



Photo 4: See comments under photo 3.



Inspection Photos
Operator Name: TEP ROCKY MOUNTAIN LLC - 96850
Location ID: 335106



Photo 5: See comments under photo 3.



Photo 6: See comments under photo 3. Photo also shows areas on the west end of the Location not needed for production where equipment/vehicles/supplies not necessary for use on the lease is being stored. Areas require reclamation pursuant to Rule 1003.b.

Inspection Photos

Operator Name: TEP ROCKY MOUNTAIN LLC - 96850

Location ID: 335106



Photo 7: Photo taken from the slopes on the north end of the Location. Photo shows desirable vegetative establishment on the interim areas.



Photo 8: See comments under photo 7. Photo also shows stormwater diversion ditch.

Inspection Photos

Operator Name: TEP ROCKY MOUNTAIN LLC - 96850

Location ID: 335106



Photo 9: Photo taken from the west end of the Location, facing northeast. Photo shows areas not needed for production, where equipment/vehicles/supplies not necessary for use on the lease is being stored.



Photo 10: Photo taken from the west end of the Location, facing northwest. See comments under photo 9.



COLORADO
Oil & Gas Conservation
Commission
Department of Natural Resources

Inspection Photos
Operator Name: TEP ROCKY MOUNTAIN LLC - 96850
Location ID: 335106

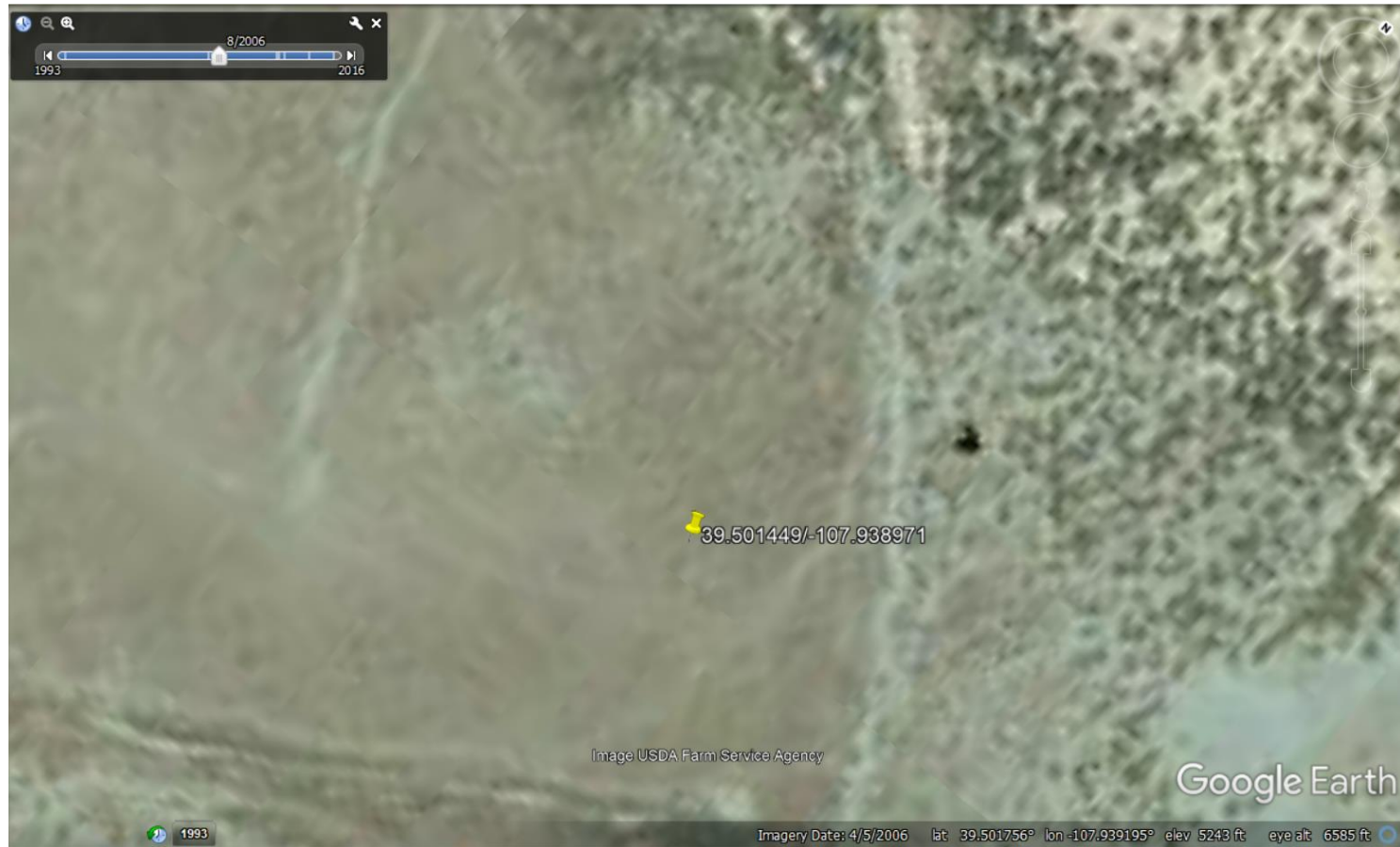


Photo 11: 2006 Google Earth Aerial imagery. Photo shows area of the Location prior to its construction and O&G disturbance.



Inspection Photos
Operator Name: TEP ROCKY MOUNTAIN LLC - 96850
Location ID: 335106

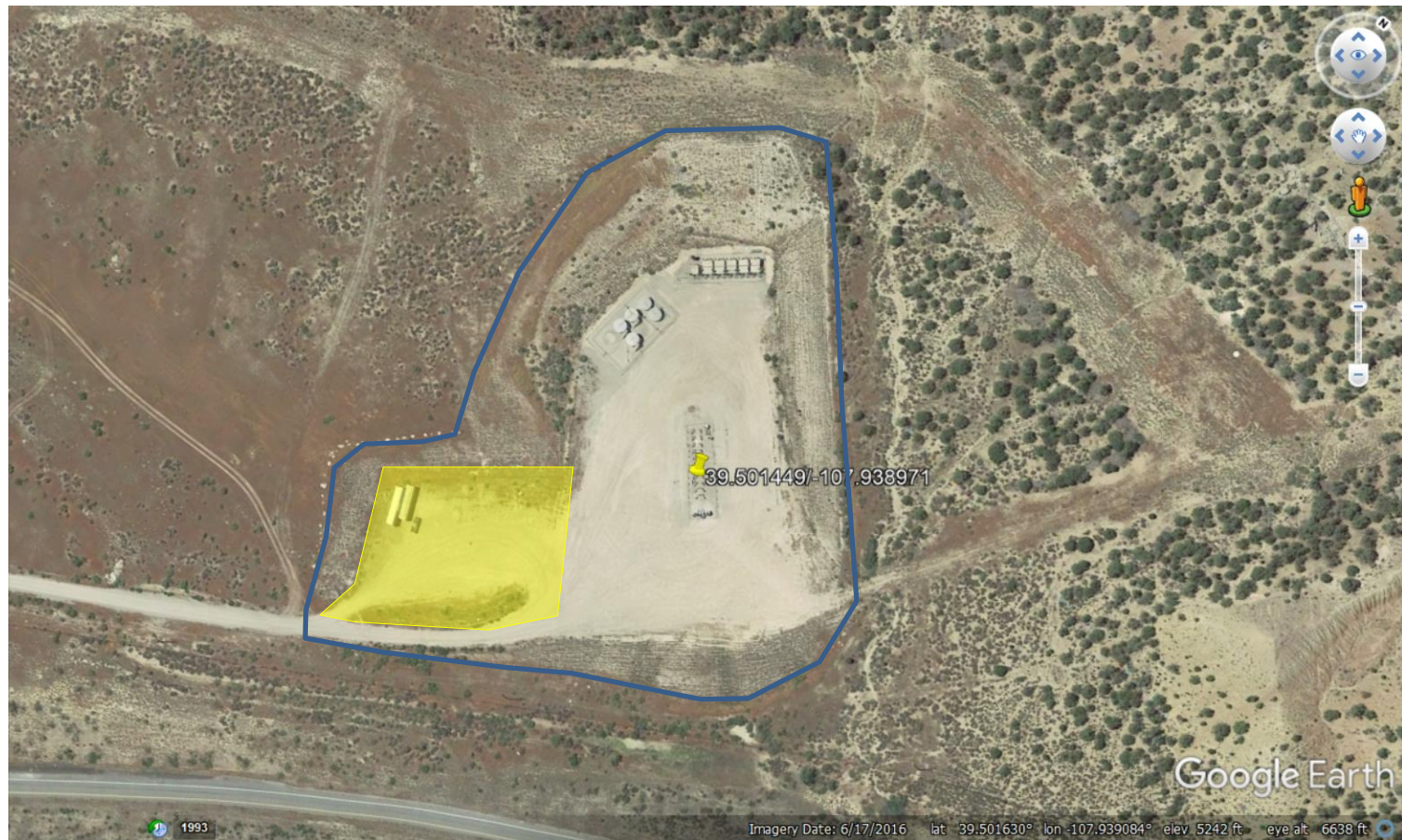


Photo 12: Most recent available Google Earth aerial imagery (6/17/2016). Area in blue represents the approximate total disturbance area of the Location (~6.28 ac). Area in yellow shows area of the Location not needed for production equipment where equipment/vehicles/supplies not necessary for use on the lease is being stored. Areas require reclamation pursuant to Rule 1003.b.

