

Axis Exploration LLC, Morris 33-18 1
039-06108

Inspection #688307495

4/30/2020

MIT Inspection



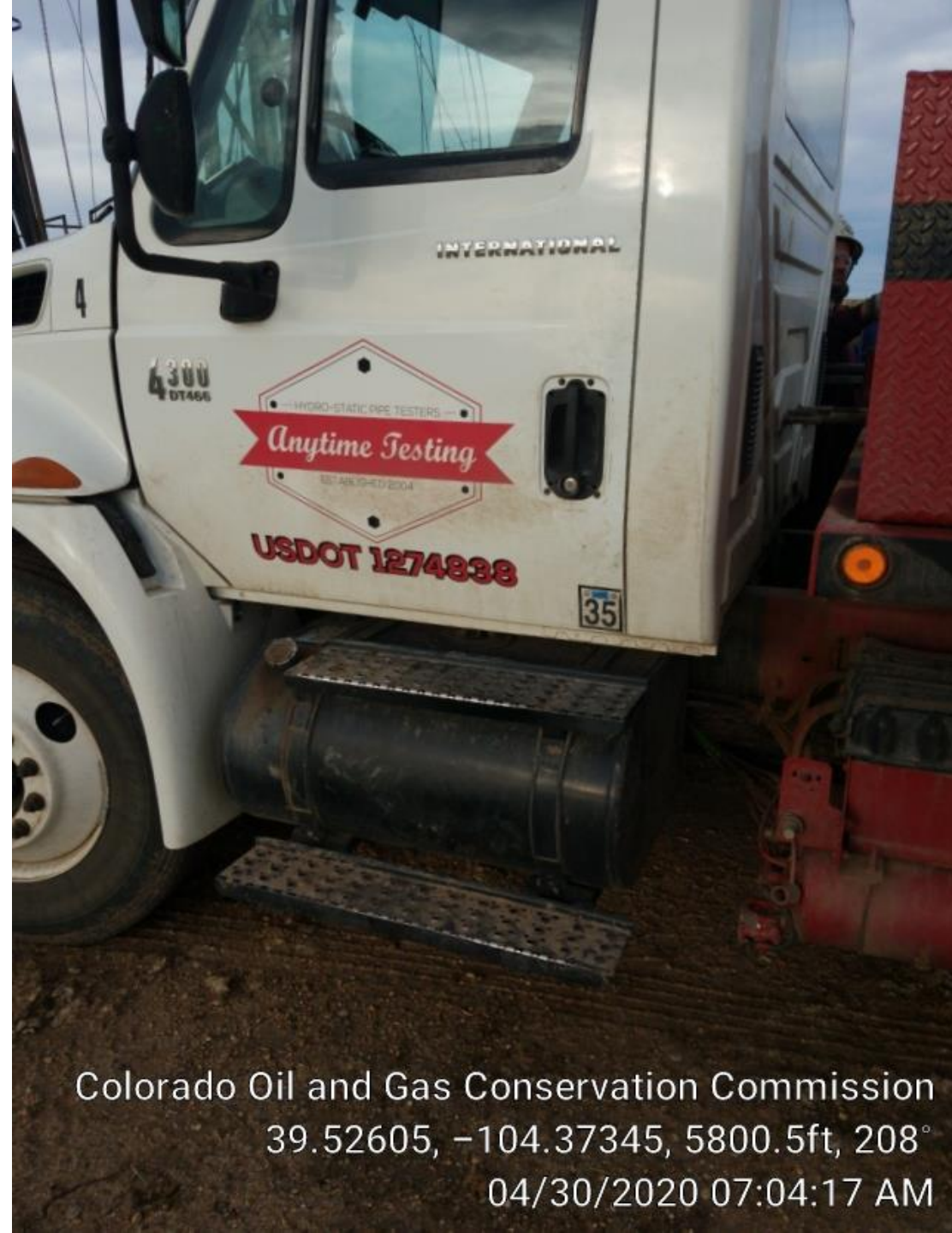
Colorado Oil and Gas Conservation Commission
39.52763, -104.36649, 5794.0ft, 202
04/30/2020 06:56:50 AM



Colorado Oil and Gas Conservation Commission
39.52641, -104.37346, 5797.2ft, 196°
04/30/2020 07:02:17 AM



Colorado Oil and Gas Conservation Commission
39.52598, -104.37352, 5803.8ft, 199°
04/30/2020 07:11:00 AM



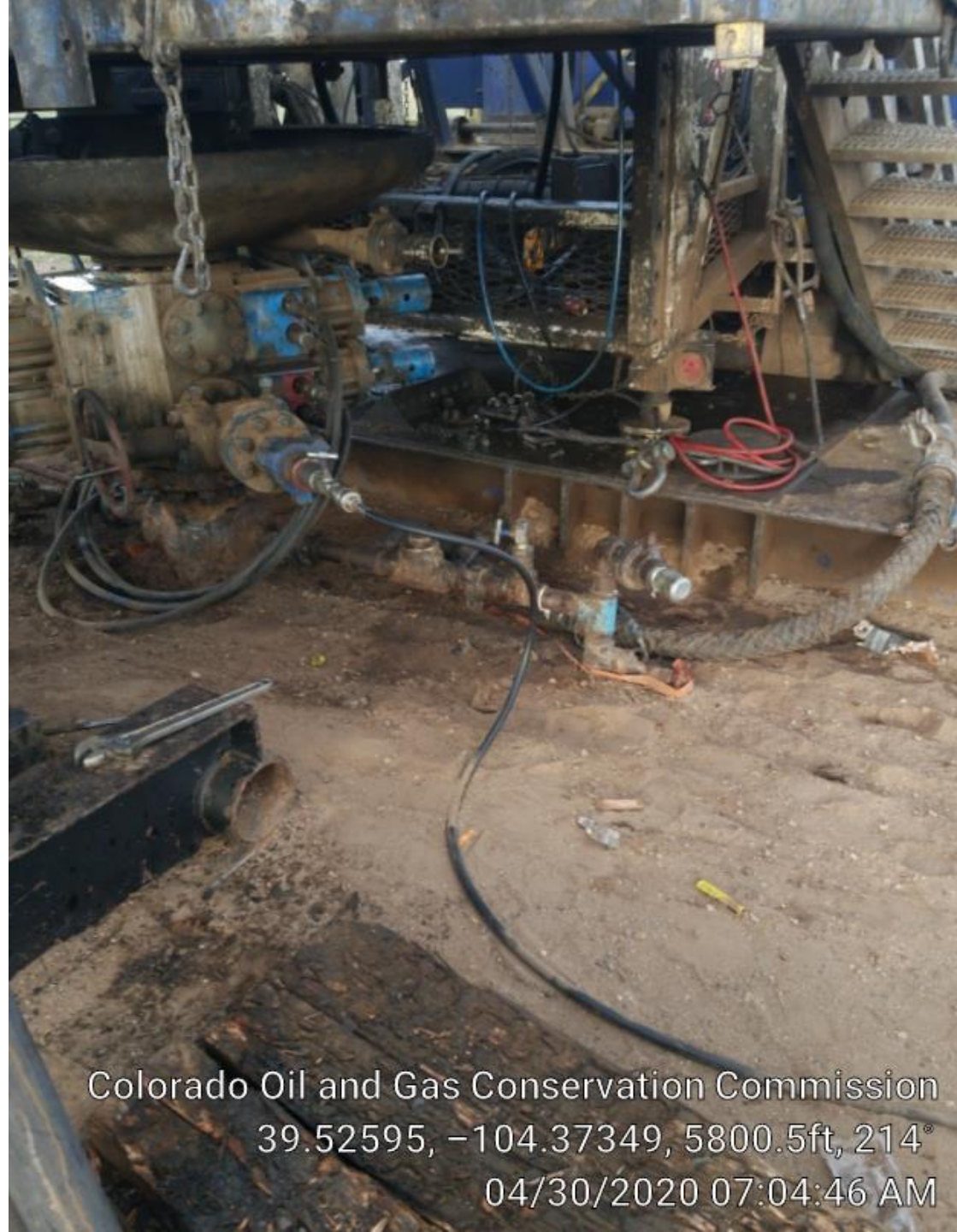
Colorado Oil and Gas Conservation Commission
39.52605, -104.37345, 5800.5ft, 208°
04/30/2020 07:04:17 AM



Colorado Oil and Gas Conservation Commission
39.52601, -104.37342, 5800.5ft, 225°
04/30/2020 07:04:30 AM



Colorado Oil and Gas Conservation Commission
39.52596, -104.37349, 5800.5ft, 209°
04/30/2020 07:04:42 AM



Colorado Oil and Gas Conservation Commission
39.52595, -104.37349, 5800.5ft, 214°
04/30/2020 07:04:46 AM