



SRC Energy

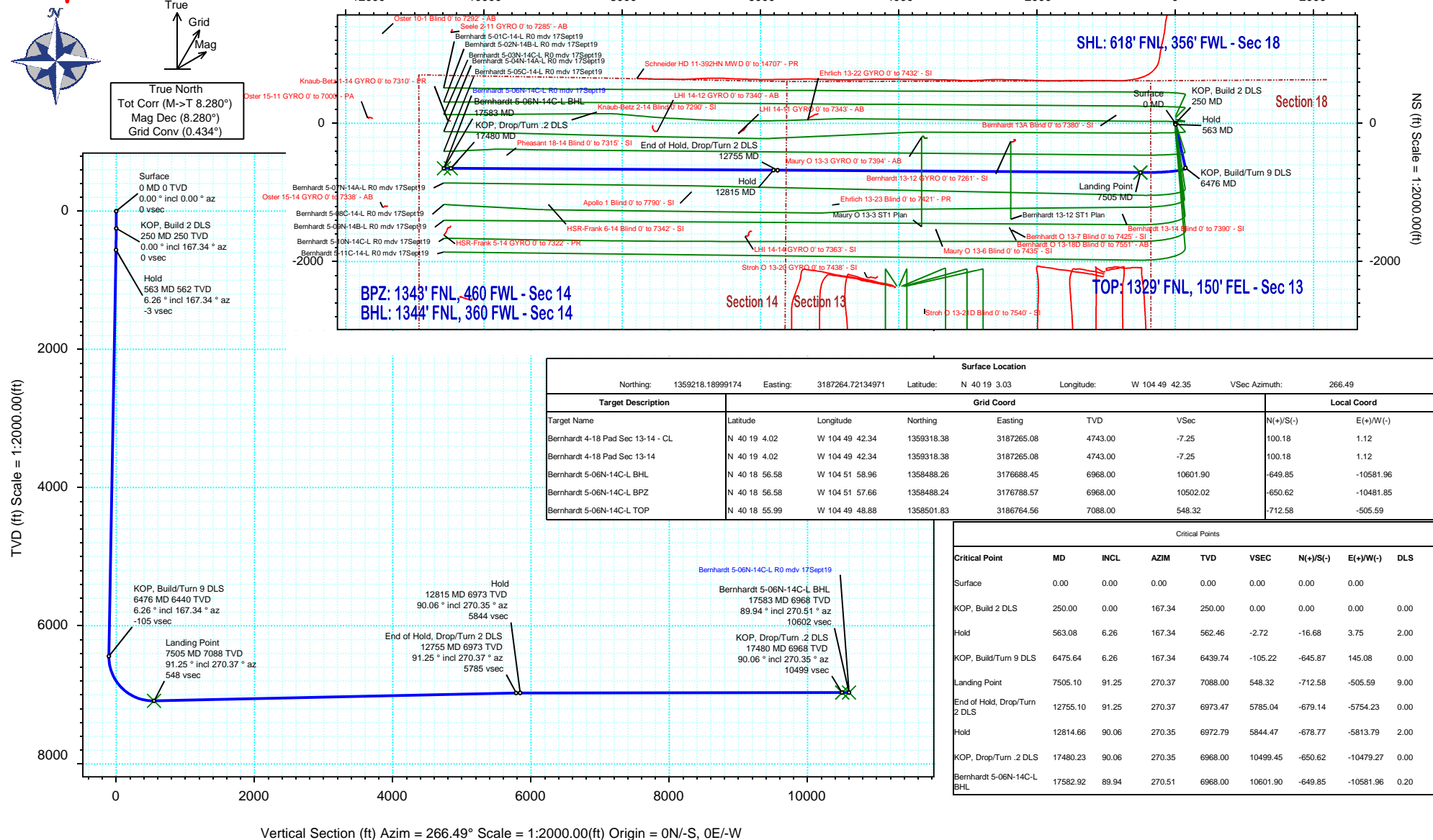
Rev 0

Schlumberger

Borehole:	Well:	Field:	Structure:
Original Hole	Bernhardt 5-06N-14C-L	CO, Weld County (NAD 83 NZ) - SRC	SRC Energy 18-04N-66W (Bernhardt 4-18 Pad)

Gravity & Magnetic Parameters		Surface Location			Miscellaneous	
Model:	HDGM 2019	Dip:	66.674°	Date:	17-Sep-2019	Lat: N 40 19 3.03
MagDec:	8.28°	FS:	52145.242nT	Gravity FS:	999.023mgn (9.80665 Based)	Northing: 1359218.19ftUS
						Grid Conv: 0.4339°
						Lon: W 104 49 42.35
						Easting: 3187264.72ftUS
						Scale Fact: 0.99995752
						Slot: Bernhardt 5-06N-14C-L
						Plan: Bernhardt 5-06N-14C-L R0 mdy 17Sept19
						TVD Ref: KB 4ft(4743ft above MSL)

Proposal





Bernhardt 5-06N-14C-L R0 mdv 17Sept19 Proposal Geodetic Report

(Def Plan)

Report Date: September 23, 2019 - 01:17 PM
Client: SRC Energy
Field: CO, Weld County (NAD 83 NZ) - SRC
Structure / Slot: SRC Energy 18-04N-66W (Bernhardt 4-18 Pad) / Bernhardt 5-06N-14C-L
Well: Bernhardt 5-06N-14C-L
Borehole: Original Hole
UWI / API#: Unknown / Unknown
Survey Name: Bernhardt 5-06N-14C-L R0 mdv 17Sept19
Survey Date: September 17, 2019
Tort / AHD / DDI / ERD Ratio: 100.310 ° / 11402.078 ft / 6.453 / 1.609
Coordinate Reference System: NAD83 Colorado State Plane, Northern Zone, US Feet
Location Lat / Long: N 40° 19' 3.02880", W 104° 49' 42.35160"
Location Grid N/E Y/X: N 1359218.190 ftUS, E 3187264.721 ftUS
CRS Grid Convergence Angle: 0.4339 °
Grid Scale Factor: 0.99995752
Version / Patch: 2.10.782.0

Survey / DLS Computation: Minimum Curvature / Lubinski
Vertical Section Azimuth: 266.486 ° (True North)
Vertical Section Origin: 0.000 ft, 0.000 ft
TVD Reference Datum: KB 4ft
TVD Reference Elevation: 4743.000 ft above MSL
Seabed / Ground Elevation: 4738.000 ft above MSL
Magnetic Declination: 8.280 °
Total Gravity Field Strength: 999.0228mgn (9.80665 Based)
Gravity Model: GARM
Total Magnetic Field Strength: 52145.242 nT
Magnetic Dip Angle: 66.674 °
Declination Date: September 17, 2019
Magnetic Declination Model: HDGM 2019
North Reference: True North
Grid Convergence Used: 0.0000 °
Total Corr Mag North->True North: 8.2803 °
Local Coord Referenced To: Well Head

Comments	MD (ft)	Incl (°)	Azim True (°)	TVD (ft)	VSEC (ft)	NS (ft)	EW (ft)	DLS (°/100ft)	Northing (ftUS)	Easting (ftUS)	Latitude (°)	Longitude (°)
Surface	0.00	0.00	0.00	0.00	0.00	0.00	0.00	N/A	1359218.19	3187264.72	40.317508	-104.828431
	100.00	0.00	167.34	100.00	0.00	0.00	0.00	0.00	1359218.19	3187264.72	40.317508	-104.828431
	200.00	0.00	167.34	200.00	0.00	0.00	0.00	0.00	1359218.19	3187264.72	40.317508	-104.828431
KOP, Build 2 DLS	250.00	0.00	167.34	250.00	0.00	0.00	0.00	0.00	1359218.19	3187264.72	40.317508	-104.828431
	300.00	1.00	167.34	300.00	-0.07	-0.43	0.10	2.00	1359217.77	3187264.82	40.317507	-104.828431
	400.00	3.00	167.34	399.93	-0.62	-3.83	0.86	2.00	1359214.37	3187265.61	40.317497	-104.828428
	500.00	5.00	167.34	499.68	-1.73	-10.64	2.39	2.00	1359207.57	3187267.19	40.317479	-104.828422
Hold	563.08	6.26	167.34	562.46	-2.72	-16.68	3.75	2.00	1359201.54	3187268.59	40.317462	-104.828418
	600.00	6.26	167.34	599.16	-3.36	-20.60	4.63	0.00	1359197.62	3187269.51	40.317451	-104.828414
	700.00	6.26	167.34	698.56	-5.09	-31.25	7.02	0.00	1359187.00	3187271.98	40.317422	-104.828406
	800.00	6.26	167.34	797.96	-6.82	-41.89	9.41	0.00	1359176.38	3187274.45	40.317393	-104.828397
	900.00	6.26	167.34	897.37	-8.56	-52.53	11.80	0.00	1359165.75	3187276.92	40.317364	-104.828389
	1000.00	6.26	167.34	996.77	-10.29	-63.17	14.19	0.00	1359155.13	3187279.39	40.317335	-104.828380
	1100.00	6.26	167.34	1096.17	-12.02	-73.81	16.58	0.00	1359144.51	3187281.86	40.317305	-104.828372
	1200.00	6.26	167.34	1195.58	-13.76	-84.45	18.97	0.00	1359133.89	3187284.33	40.317276	-104.828363
	1300.00	6.26	167.34	1294.98	-15.49	-95.10	21.36	0.00	1359123.26	3187286.80	40.317247	-104.828354
	1400.00	6.26	167.34	1394.38	-17.23	-105.74	23.75	0.00	1359112.64	3187289.27	40.317218	-104.828346
	1500.00	6.26	167.34	1493.79	-18.96	-116.38	26.14	0.00	1359102.02	3187291.74	40.317189	-104.828337
	1600.00	6.26	167.34	1593.19	-20.69	-127.02	28.53	0.00	1359091.39	3187294.21	40.317159	-104.828329
	1700.00	6.26	167.34	1692.59	-22.43	-137.66	30.92	0.00	1359080.77	3187296.68	40.317130	-104.828320
	1800.00	6.26	167.34	1792.00	-24.16	-148.30	33.31	0.00	1359070.15	3187299.16	40.317101	-104.828312
	1900.00	6.26	167.34	1891.40	-25.89	-158.95	35.70	0.00	1359059.53	3187301.63	40.317072	-104.828303
	2000.00	6.26	167.34	1990.80	-27.63	-169.59	38.09	0.00	1359048.90	3187304.10	40.317042	-104.828294
	2100.00	6.26	167.34	2090.21	-29.36	-180.23	40.48	0.00	1359038.28	3187306.57	40.317013	-104.828286
	2200.00	6.26	167.34	2189.61	-31.10	-190.87	42.88	0.00	1359027.66	3187309.04	40.316984	-104.828277
	2300.00	6.26	167.34	2289.02	-32.83	-201.51	45.27	0.00	1359017.04	3187311.51	40.316955	-104.828269
	2400.00	6.26	167.34	2388.42	-34.56	-212.15	47.66	0.00	1359006.41	3187313.98	40.316926	-104.828260
	2500.00	6.26	167.34	2487.82	-36.30	-222.80	50.05	0.00	1358995.79	3187316.45	40.316896	-104.828252
	2600.00	6.26	167.34	2587.23	-38.03	-233.44	52.44	0.00	1358985.17	3187318.92	40.316867	-104.828243
	2700.00	6.26	167.34	2686.63	-39.76	-244.08	54.83	0.00	1358974.54	3187321.39	40.316838	-104.828234
	2800.00	6.26	167.34	2786.03	-41.50	-254.72	57.22	0.00	1358963.92	3187323.86	40.316809	-104.828226
	2900.00	6.26	167.34	2885.44	-43.23	-265.36	59.61	0.00	1358953.30	3187326.34	40.316780	-104.828217
	3000.00	6.26	167.34	2984.84	-44.96	-276.00	62.00	0.00	1358942.68	3187328.81	40.316750	-104.828209
	3100.00	6.26	167.34	3084.24	-46.70	-286.65	64.39	0.00	1358932.05	3187331.28	40.316721	-104.828200
	3200.00	6.26	167.34	3183.65	-48.43	-297.29	66.78	0.00	1358921.43	3187333.75	40.316692	-104.828192
	3300.00	6.26	167.34	3283.05	-50.17	-307.93	69.17	0.00	1358910.81	3187336.22	40.316663	-104.828183
	3400.00	6.26	167.34	3382.45	-51.90	-318.57	71.56	0.00	1358900.18	3187338.69	40.316634	-104.828174
	3500.00	6.26	167.34	3481.86	-53.63	-329.21	73.95	0.00	1358889.56	3187341.16	40.316604	-104.828166
	3600.00	6.26	167.34	3581.26	-55.37	-339.85	76.34	0.00	1358878.94	3187343.63	40.316575	-104.828157
	3700.00	6.26	167.34	3680.66	-57.10	-350.50	78.73	0.00	1358868.32	3187346.10	40.316546	-104.828149
	3800.00	6.26	167.34	3780.07	-58.83	-361.14	81.12	0.00	1358857.69	3187348.57	40.316517	-104.828140
	3900.00	6.26	167.34	3879.47	-60.57	-371.78	83.51	0.00	1358847.07	3187351.04	40.316487	-104.828132
	4000.00	6.26	167.34	3978.87	-62.30	-382.42	85.90	0.00	1358836.45	3187353.51	40.316458	-104.828123
	4100.00	6.26	167.34	4078.28	-64.04	-393.06	88.29	0.00	1358825.83	3187355.99	40.316429	-104.828114
	4200.00	6.26	167.34	4177.68	-65.77	-403.70	90.68	0.00	1358815.20	3187358.46	40.316400	-104.828106
	4300.00	6.26	167.34	4277.08	-67.50	-414.35	93.07	0.00	1358804.58	3187360.93	40.316371	-104.828097
	4400.00	6.26	167.34	4376.49	-69.24	-424.99	95.47	0.00	1358793.96	3187363.40	40.316341	-104.828089
	4500.00	6.26	167.34	4475.89	-70.97	-435.63	97.86	0.00	1358783.33	3187365.87	40.316312	-104.828080
	4600.00	6.26	167.34	4575.29	-72.70	-446.27	100.25	0.00	1358772.71	3187368.34	40.316283	-104.828072
	4700.00	6.26	167.34	4674.70	-74.44	-456.91	102.64	0.00	1358762.09	3187370.81	40.316254	-104.828063
	4800.00	6.26	167.34	4774.10	-76.17	-467.55	105.03	0.00	1358751.47	3187373.28	40.316225	-104.828054
	4900.00	6.26	167.34	4873.50	-77.90	-478.20	107.42	0.00	1358740.84	3187375.75	40.316195	-104.828046
	5000.00	6.26	167.34	4972.91	-79.64	-488.84	109.81	0.00	1358730.22	3187378.22	40.316166	-104.828037
	5100.00	6.26	167.34	5072.31	-81.37	-499.48	112.20	0.00	1358719.60	3187380.69	40.316137	-104.828029
	5200.00	6.26	167.34	5171.71	-83.11	-510.12	114.59	0.00	1358708.98	3187383.16	40.316108	-104.828020
	5300.00	6.26	167.34	5271.12	-84.84	-520.76	116.98	0.00	1358698.35	3187385.64	40.316079	-104.828012
	5400.00	6.26	167.34	5370.52	-86.57	-531.40	119.37	0.00	1358687.73	3187388.11	40.316049	-104.828003
	5500.00	6.26	167.34	5469.92	-88.31	-542.05	121.76	0.00	1358677.11	3187390.58	40.316020	-104.827994
	5600.00	6.26	167.34	5569.33	-90.04	-552.69	124.15	0.00	1358666.48	3187393.05	40.315991	-104.827986
	5700.00	6.26	167.34	5668.73	-91.77	-563.33	126.54	0.00	1358655.86	3187395.52	40.315962	-104.827977
	5800.00	6.26	167.34	5768.14	-93.51	-573.97	128.93	0.00	1358645.24	3187397.99	40.315932	-104.827969
	5900.00	6.26	167.34	5867.54	-95.24	-584.61	131.32	0.00	1358634.62	3187400.46	40.315903	-104.827960
	6000.00	6.26	167.34	5966.94	-96.97	-595.25	133.71	0.00	1358623.99	3187402.93	40.315874	-104.827952
	6100.00	6.26	167.34	6066.35	-98.71	-605.89	136.10	0.00	1358613.37	3187405.40	40.315845	-104.827943
	6200.00	6.26	167.34	6165.75	-100.44	-616.54	138.49	0.00	1358602.75	3187407.87	40.315816	-104.827934
	6300.00	6.26	167.34	6265.15	-102.18	-627.18	140.88	0.00	1358592.12	3187410.34	40.315786	-104.827926
	6400.00	6.26	167.34	6364.56	-103.91	-637.82	143.27	0.00	1358581.50	3187412.82	40.315757	-104.827917
KOP, Build/Turn 9 DLS	6475.64	6.26	167.34	6439.74	-105.22	-645.87	145.08	0.00	1358573.47	3187414.68	40.315735	-104.827911
	6500.00	6.16	187.70	6463.96	-105.18	-648.46	145.20	9.00	1358570.88	3187414.82	40.315728	-104.827910
	6600.00	11.53	238.61	6562.87	-95.28	-659.00	135.93	9.00	1358560.27	3187405.63	40.315699	-104.827944
	6700.00	19.73	252.88	6659.12	-69.99	-669.20	111.22	9.00	1358549.88	3187381.00	40.315671	-104.828032
	6800.00	28.41	258.83	6750.36	-29.93	-678.80	71.67	9.00	1358539.99	3187341.52	40.315645	-104.828174
	6900.00	37.23	262.14	6834.32	23.93	-687.56	18.25	9.00	1358530.82	3187288.18	40.315621	-104.828366
	7000.00	46.11	264.33	6908.94	90.24	-695.28	-47.71	9.00	1358522.60	3187222.28	40.315600	-104.828602
	7100.00	55.03	265.94	6972.39	167.37	-701.75	-124.59					

	MD (ft)	Incl (°)	Azim True (°)	TVD (ft)	VSEC (ft)	NS (ft)	EW (ft)	DLS (°/100ft)	Northing (ftUS)	Easting (ftUS)	Latitude (°)	Longitude (°)
Landing Point	7200.00	63.96	267.24	7023.11	253.44	-706.83	-210.51	9.00	1358509.82	3187059.58	40.315568	-104.829186
	7300.00	72.90	268.35	7059.84	346.32	-710.38	-303.34	9.00	1358505.56	3186966.78	40.315558	-104.829519
	7400.00	81.85	269.35	7081.68	443.71	-712.33	-400.80	9.00	1358502.88	3186869.34	40.315553	-104.829868
	7500.00	90.79	270.32	7088.09	543.23	-712.61	-500.50	9.00	1358501.84	3186769.66	40.315552	-104.830226
	7505.10	91.25	270.37	7088.00	548.32	-712.58	-505.59	9.00	1358501.83	3186764.56	40.315552	-104.830244
	7600.00	91.25	270.37	7085.93	642.98	-711.97	-600.47	0.00	1358501.72	3186669.69	40.315554	-104.830584
	7700.00	91.25	270.37	7083.75	742.73	-711.34	-700.44	0.00	1358501.60	3186569.72	40.315555	-104.830943
	7800.00	91.25	270.37	7081.57	842.48	-710.70	-800.42	0.00	1358501.48	3186469.74	40.315557	-104.831301
	7900.00	91.25	270.37	7079.39	942.22	-710.06	-900.39	0.00	1358501.36	3186369.77	40.315559	-104.831660
	8000.00	91.25	270.37	7077.20	1041.97	-709.43	-1000.37	0.00	1358501.24	3186269.80	40.315561	-104.832018
	8100.00	91.25	270.37	7075.02	1141.72	-708.79	-1100.34	0.00	1358501.12	3186169.83	40.315562	-104.832377
	8200.00	91.25	270.37	7072.84	1241.46	-708.15	-1200.32	0.00	1358501.00	3186069.86	40.315564	-104.832735
	8300.00	91.25	270.37	7070.66	1341.21	-707.52	-1300.29	0.00	1358500.88	3185969.89	40.315566	-104.833094
	8400.00	91.25	270.37	7068.48	1440.96	-706.88	-1400.26	0.00	1358500.76	3185869.91	40.315568	-104.833452
	8500.00	91.25	270.37	7066.30	1540.71	-706.24	-1500.24	0.00	1358500.64	3185769.94	40.315569	-104.833811
	8600.00	91.25	270.37	7064.11	1640.45	-705.61	-1600.21	0.00	1358500.52	3185669.97	40.315571	-104.834169
	8700.00	91.25	270.37	7061.93	1740.20	-704.97	-1700.19	0.00	1358500.40	3185570.00	40.315573	-104.834528
	8800.00	91.25	270.37	7059.75	1839.95	-704.33	-1800.16	0.00	1358500.28	3185470.03	40.315574	-104.834886
	8900.00	91.25	270.37	7057.57	1939.69	-703.69	-1900.13	0.00	1358500.16	3185370.06	40.315576	-104.835245
	9000.00	91.25	270.37	7055.39	2039.44	-703.06	-2000.11	0.00	1358500.04	3185270.09	40.315578	-104.835603
	9100.00	91.25	270.37	7053.21	2139.19	-702.42	-2100.08	0.00	1358499.92	3185170.11	40.315580	-104.835962
	9200.00	91.25	270.37	7051.03	2238.94	-701.78	-2200.06	0.00	1358499.80	3185070.14	40.315581	-104.836320
	9300.00	91.25	270.37	7048.84	2338.68	-701.15	-2300.03	0.00	1358499.68	3184970.17	40.315583	-104.836679
	9400.00	91.25	270.37	7046.66	2438.43	-700.51	-2400.01	0.00	1358499.56	3184870.20	40.315585	-104.837037
	9500.00	91.25	270.37	7044.48	2538.18	-699.87	-2499.98	0.00	1358499.44	3184770.23	40.315587	-104.837396
	9600.00	91.25	270.37	7042.30	2637.92	-699.24	-2599.95	0.00	1358499.31	3184670.25	40.315588	-104.837754
	9700.00	91.25	270.37	7040.12	2737.67	-698.60	-2699.93	0.00	1358499.19	3184570.28	40.315590	-104.838113
	9800.00	91.25	270.37	7037.94	2837.42	-697.96	-2799.90	0.00	1358499.07	3184470.31	40.315592	-104.838471
	9900.00	91.25	270.37	7035.76	2937.17	-697.33	-2899.88	0.00	1358498.95	3184370.34	40.315593	-104.838830
	10000.00	91.25	270.37	7033.57	3036.91	-696.69	-2999.85	0.00	1358498.83	3184270.37	40.315595	-104.839188
	10100.00	91.25	270.37	7031.39	3136.66	-696.05	-3099.82	0.00	1358498.71	3184170.39	40.315597	-104.839547
	10200.00	91.25	270.37	7029.21	3236.41	-695.42	-3199.80	0.00	1358498.59	3184070.42	40.315599	-104.839905
	10300.00	91.25	270.37	7027.03	3336.15	-694.78	-3299.77	0.00	1358498.47	3183970.45	40.315600	-104.840264
	10400.00	91.25	270.37	7024.85	3435.90	-694.14	-3399.75	0.00	1358498.35	3183870.48	40.315602	-104.840622
	10500.00	91.25	270.37	7022.67	3535.65	-693.50	-3499.72	0.00	1358498.23	3183770.51	40.315604	-104.840981
	10600.00	91.25	270.37	7020.49	3635.40	-692.87	-3599.70	0.00	1358498.11	3183670.54	40.315605	-104.841339
	10700.00	91.25	270.37	7018.30	3735.14	-692.23	-3699.67	0.00	1358497.99	3183570.56	40.315607	-104.841698
	10800.00	91.25	270.37	7016.12	3834.89	-691.59	-3799.64	0.00	1358497.87	3183470.59	40.315609	-104.842056
	10900.00	91.25	270.37	7013.94	3934.64	-690.96	-3899.62	0.00	1358497.75	3183370.62	40.315611	-104.842415
	11000.00	91.25	270.37	7011.76	4034.38	-690.32	-3999.59	0.00	1358497.63	3183270.65	40.315612	-104.842773
	11100.00	91.25	270.37	7009.58	4134.13	-689.68	-4099.57	0.00	1358497.51	3183170.68	40.315614	-104.843132
	11200.00	91.25	270.37	7007.40	4233.88	-689.05	-4199.54	0.00	1358497.39	3183070.71	40.315616	-104.843490
	11300.00	91.25	270.37	7005.21	4333.63	-688.41	-4299.51	0.00	1358497.27	3182970.73	40.315617	-104.843849
	11400.00	91.25	270.37	7003.03	4433.37	-687.77	-4399.49	0.00	1358497.15	3182870.76	40.315619	-104.844207
	11500.00	91.25	270.37	7000.85	4533.12	-687.14	-4499.46	0.00	1358497.03	3182770.79	40.315621	-104.844566
	11600.00	91.25	270.37	6998.67	4632.87	-686.50	-4599.44	0.00	1358496.91	3182670.82	40.315622	-104.844924
	11700.00	91.25	270.37	6996.49	4732.61	-685.86	-4699.41	0.00	1358496.79	3182570.85	40.315624	-104.845283
	11800.00	91.25	270.37	6994.31	4832.36	-685.23	-4799.39	0.00	1358496.67	3182470.88	40.315626	-104.845641
	11900.00	91.25	270.37	6992.13	4932.11	-684.59	-4899.36	0.00	1358496.55	3182370.90	40.315628	-104.846000
	12000.00	91.25	270.37	6989.94	5031.86	-683.95	-4999.33	0.00	1358496.43	3182270.93	40.315629	-104.846358
	12100.00	91.25	270.37	6987.76	5131.60	-683.31	-5099.31	0.00	1358496.31	3182170.96	40.315631	-104.846717
	12200.00	91.25	270.37	6985.58	5231.35	-682.68	-5199.28	0.00	1358496.19	3182070.99	40.315633	-104.847075
	12300.00	91.25	270.37	6983.40	5331.10	-682.04	-5299.26	0.00	1358496.07	3181971.02	40.315634	-104.847434
	12400.00	91.25	270.37	6981.22	5430.84	-681.40	-5399.23	0.00	1358495.95	3181871.05	40.315636	-104.847792
	12500.00	91.25	270.37	6979.04	5530.59	-680.77	-5499.20	0.00	1358495.83	3181771.07	40.315638	-104.848151
	12600.00	91.25	270.37	6976.86	5630.34	-680.13	-5599.18	0.00	1358495.71	3181671.10	40.315639	-104.848509
	12700.00	91.25	270.37	6974.67	5730.09	-679.49	-5699.15	0.00	1358495.59	3181571.13	40.315641	-104.848868
End of Hold, Drop/Turn 2 DLS	12755.10	91.25	270.37	6973.47	5785.04	-679.14	-5754.23	0.00	1358495.52	3181516.05	40.315642	-104.849065
Hold	12800.00	90.35	270.35	6972.84	5829.84	-678.86	-5799.13	2.00	1358495.46	3181471.15	40.315643	-104.849226
	12814.66	90.06	270.35	6972.79	5844.47	-678.77	-5813.79	2.00	1358495.44	3181456.49	40.315643	-104.849279
	12900.00	90.06	270.35	6972.70	5929.61	-678.26	-5899.13	0.00	1358495.31	3181371.16	40.315644	-104.849585
	13000.00	90.06	270.35	6972.60	6029.39	-677.65	-5999.13	0.00	1358495.15	3181271.16	40.315646	-104.849943
	13100.00	90.06	270.35	6972.50	6129.16	-677.05	-6099.13	0.00	1358495.00	3181171.17	40.315647	-104.850302
	13200.00	90.06	270.35	6972.40	6228.93	-676.45	-6199.13	0.00	1358494.85	3181071.17	40.315649	-104.850661
	13300.00	90.06	270.35	6972.29	6328.71	-675.84	-6299.12	0.00	1358494.69	3180971.18	40.315651	-104.851019
	13400.00	90.06	270.35	6972.19	6428.48	-675.24	-6399.12	0.00	1358494.54	3180871.18	40.315652	-104.851378
	13500.00	90.										

Comments	MD (ft)	Incl (°)	Azim True (°)	TVD (ft)	VSEC (ft)	NS (ft)	EW (ft)	DLS (°/100ft)	Northing (ftUS)	Easting (ftUS)	Latitude (°)	Longitude (°)
KOP, Drop/Turn .2 DLS	17480.23	90.06	270.35	6968.00	10499.45	-650.62	-10479.27	0.00	1358488.26	3176791.14	40.315716	-104.866009
Bernhardt 5-06N- 14C-L BHL	17500.00	90.04	270.38	6967.98	10519.18	-650.49	-10499.04	0.20	1358488.24	3176771.37	40.315716	-104.866080
	17582.92	89.94	270.51	6968.00	10601.90	-649.85	-10581.96	0.20	1358488.26	3176688.45	40.315718	-104.866377

Survey Type: Def Plan

Survey Error Model: ISCWSA Rev 0 *** 3-D 95.000% Confidence 2.7955 sigma
Survey Program:

Description	Part	MD From (ft)	MD To (ft)	EOU Freq (ft)	Hole Size (in)	Casing Diameter (in)	Expected Max Inclination (deg)	Survey Tool Type	Borehole / Survey
	1	0.000	5.000	1/100.000	13.500	9.625		NAL_MWD_IFR1-Depth Only	Original Hole / Bernhardt 5-06N- 14C-L R0 mdv 17Sept19
	1	5.000	1800.000	1/100.000	13.500	9.625		NAL_MWD_IFR1	Original Hole / Bernhardt 5-06N- 14C-L R0 mdv 17Sept19
	1	1800.000	17582.921	1/100.000	8.500	5.500		NAL_MWD_IFR1+MS	Original Hole / Bernhardt 5-06N- 14C-L R0 mdv 17Sept19