



CEMENT BOND LOG  
GAMMA RAY  
CCL

Company ANADARKO PETROLEUM  
Well HSR TUTEUR 9-27A  
Field WATENBERG  
County WELD State COLORADO

Location: API #: 05-123-14311  
NE SE  
LAT: 40.19440 LONG: -104.75640  
SEC 27 TWP 1N RGE 66W  
Permanent Datum KB KB=10' Elevation 4943'  
Log Measured From KB  
Drilling Measured From KB  
Other Services  
NONE  
Elevation  
K.B. 4953'  
D.F. 4952'  
G.L. 4943'

Date 21 FEBRUARY 2020

Run Number ONE  
Depth Driller 7990'  
Depth Logger 2000'  
Bottom Logged Interval 2000'  
Top Log Interval SURFACE  
Open Hole Size 7-7/8"  
Type Fluid H2O  
Density / Viscosity ~8.3#  
Max. Recorded Temp. N/A  
Estimated Cement Top SEE LOG  
Time Well Ready ROA  
Time Logger on Bottom  
Equipment Number 058  
Location WINDSOR.CO  
Recorded By R.ALLES  
Witnessed By BILL SHEA

Borehole Record  
Run Number Bit From To Size Weight From To

Casing Record  
Size Wgt/Ft Top Bottom  
Surface String 8.63" 24# SURFACE 630'  
Prot. String  
Production String 4.5" 11.6# SURFACE 7519'  
Liner

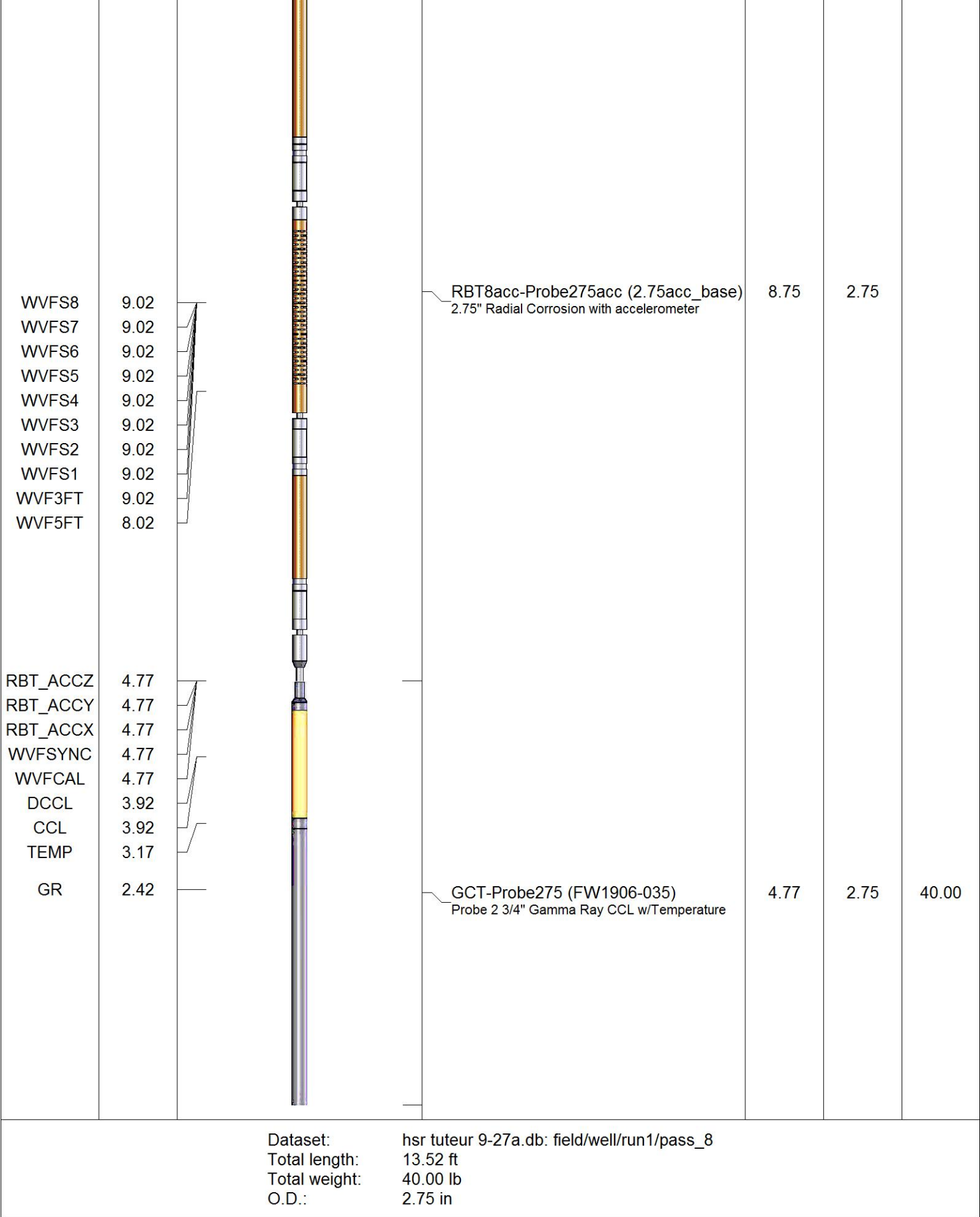
<<< Fold Here >>>

All interpretations are opinions based on inferences from electrical or other measurements and we cannot and do not guarantee the accuracy or correctness of any interpretation, and we shall not, except in the case of gross or willful negligence on our part, be liable or responsible for any loss, costs, damages, or expenses incurred or sustained by anyone resulting from any interpretation made by any of our officers, agents or employees. These interpretations are also subject to our general terms and conditions set out in our current Price Schedule.

Comments


CEMENT BOND LOG  
LOGGED WITH 0 PSI ON CASING  
THANK YOU FOR USING CUTTERS WIRELINE SERVICE

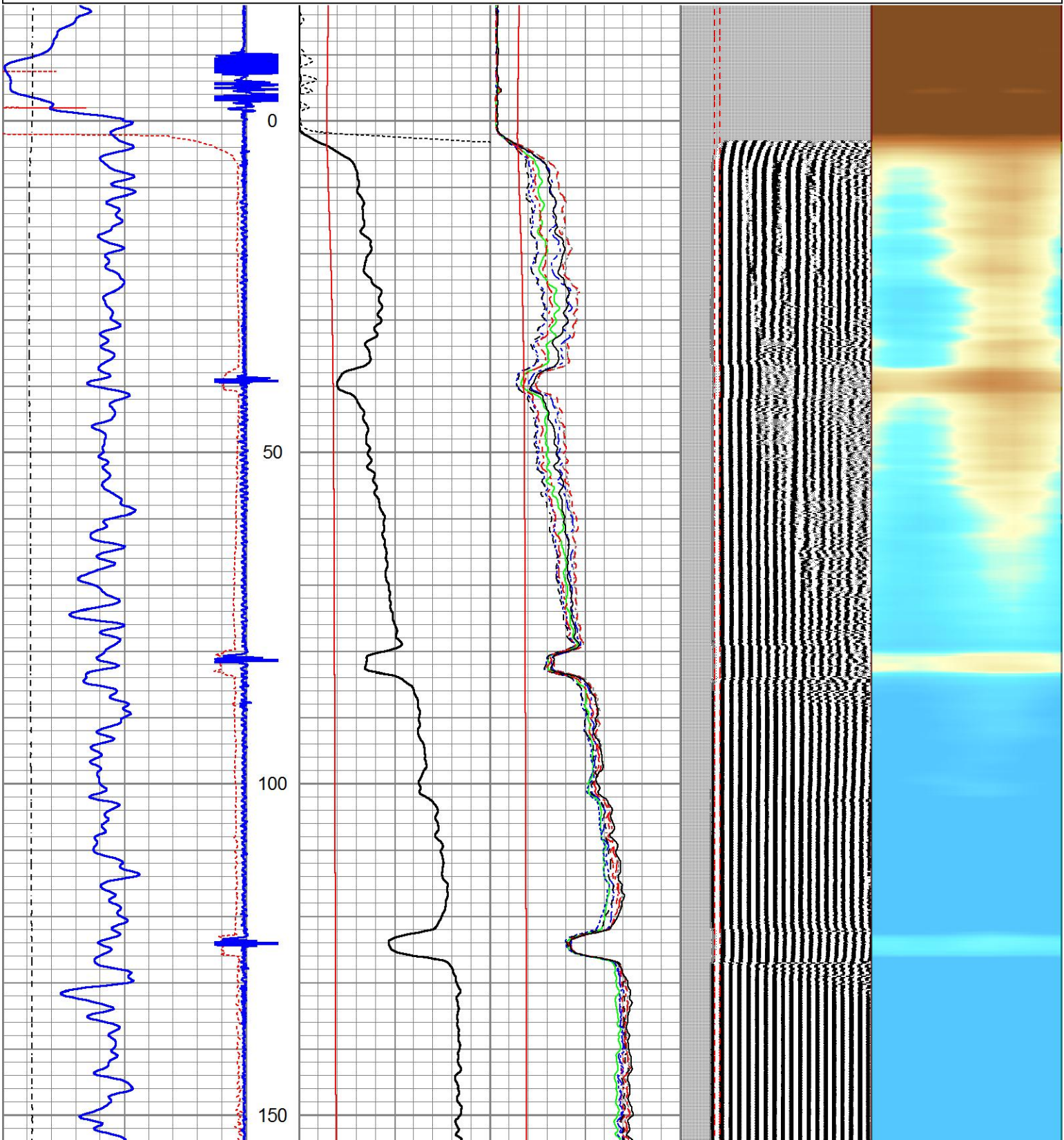
Sensor	Offset (ft)	Schematic	Description	Length (ft)	O.D. (in)	Weight (lb)
ErrCt RBT_HV	13.52 13.52					

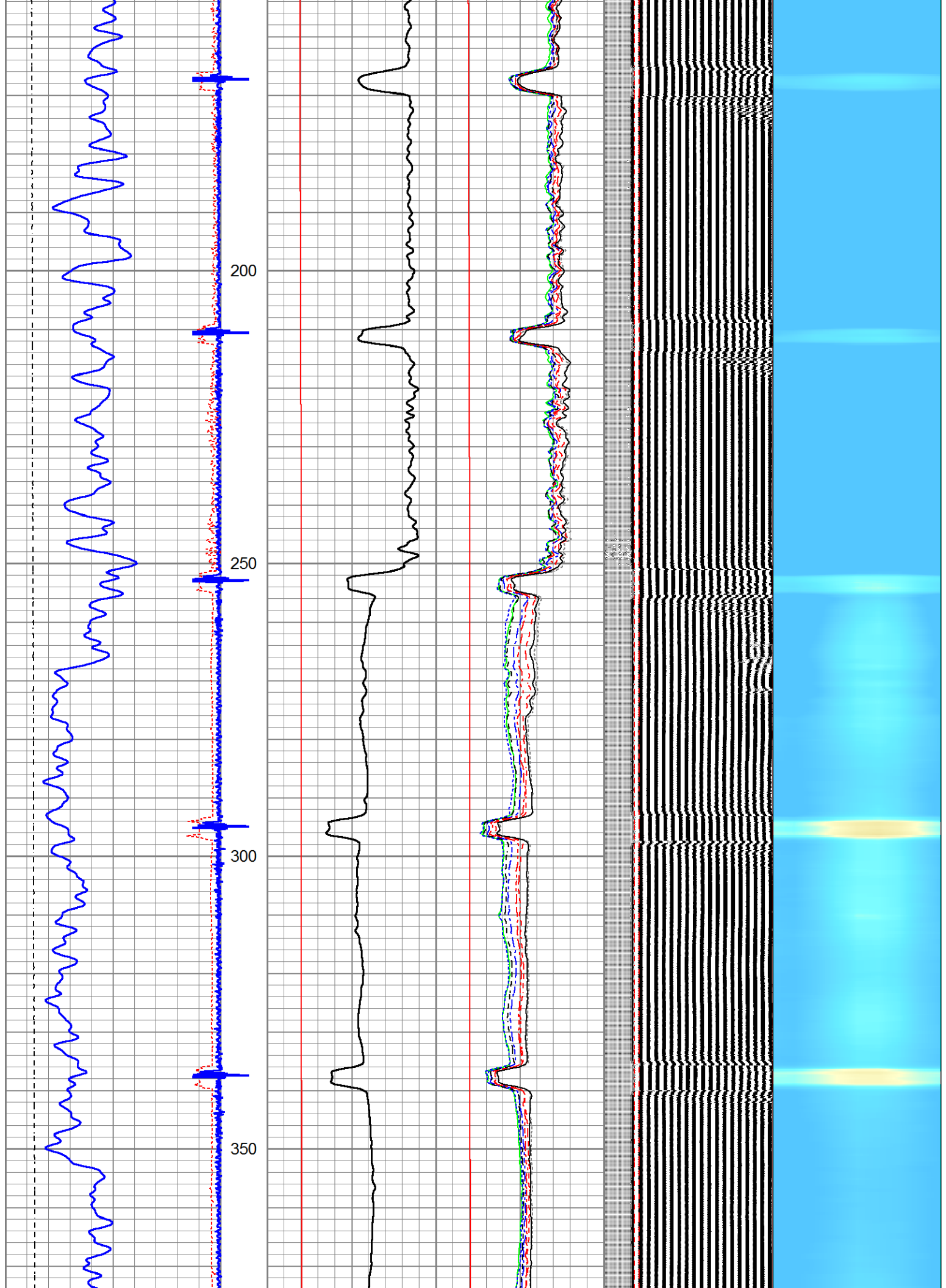


Database File	hsr tuteur 9-27a.db
Dataset Pathname	pass_8
Presentation Format	rbl55
Dataset Creation	Fri Feb 21 10:00:23 2020
Charted by	Depth in Feet scaled 1:240

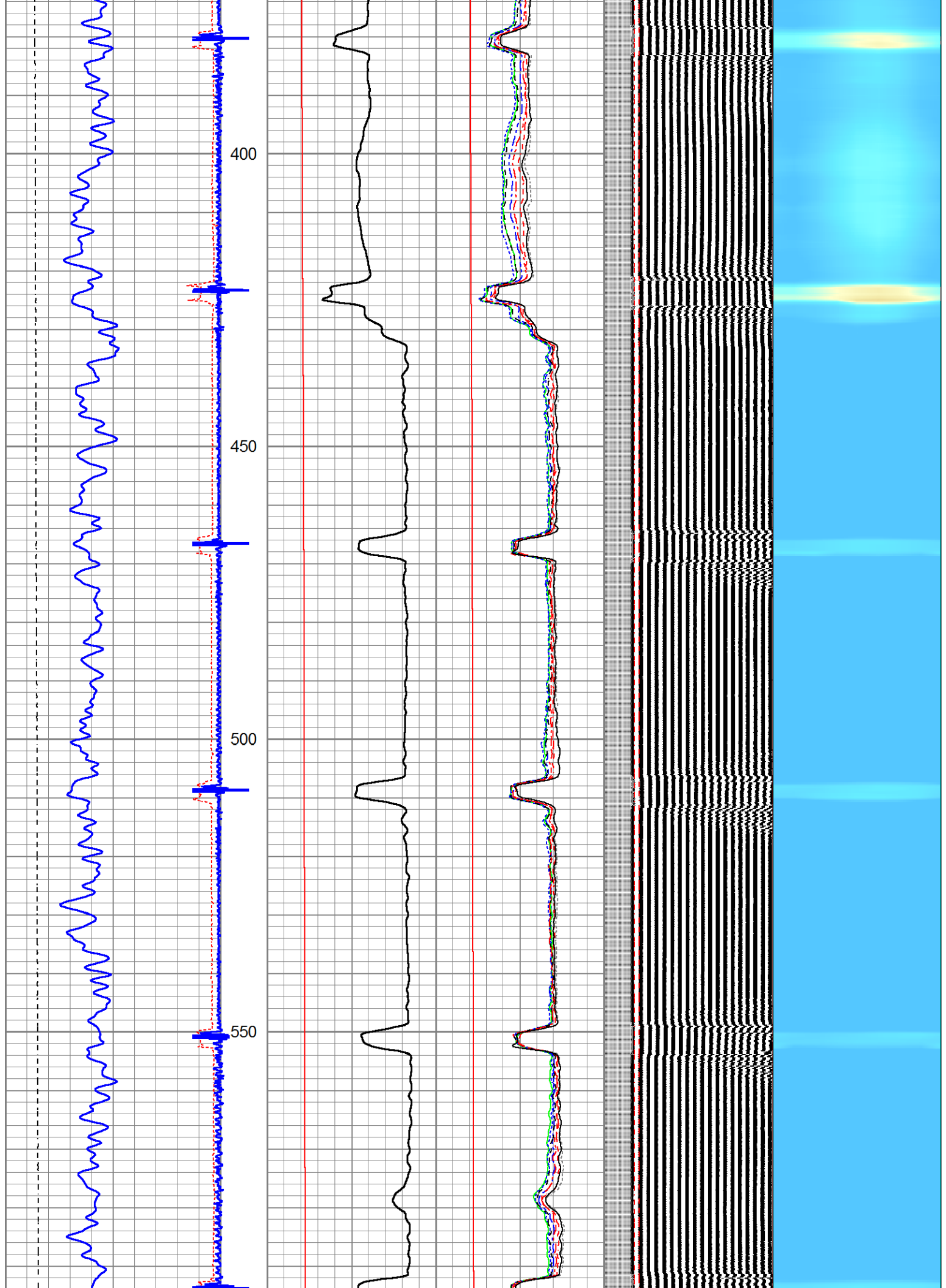


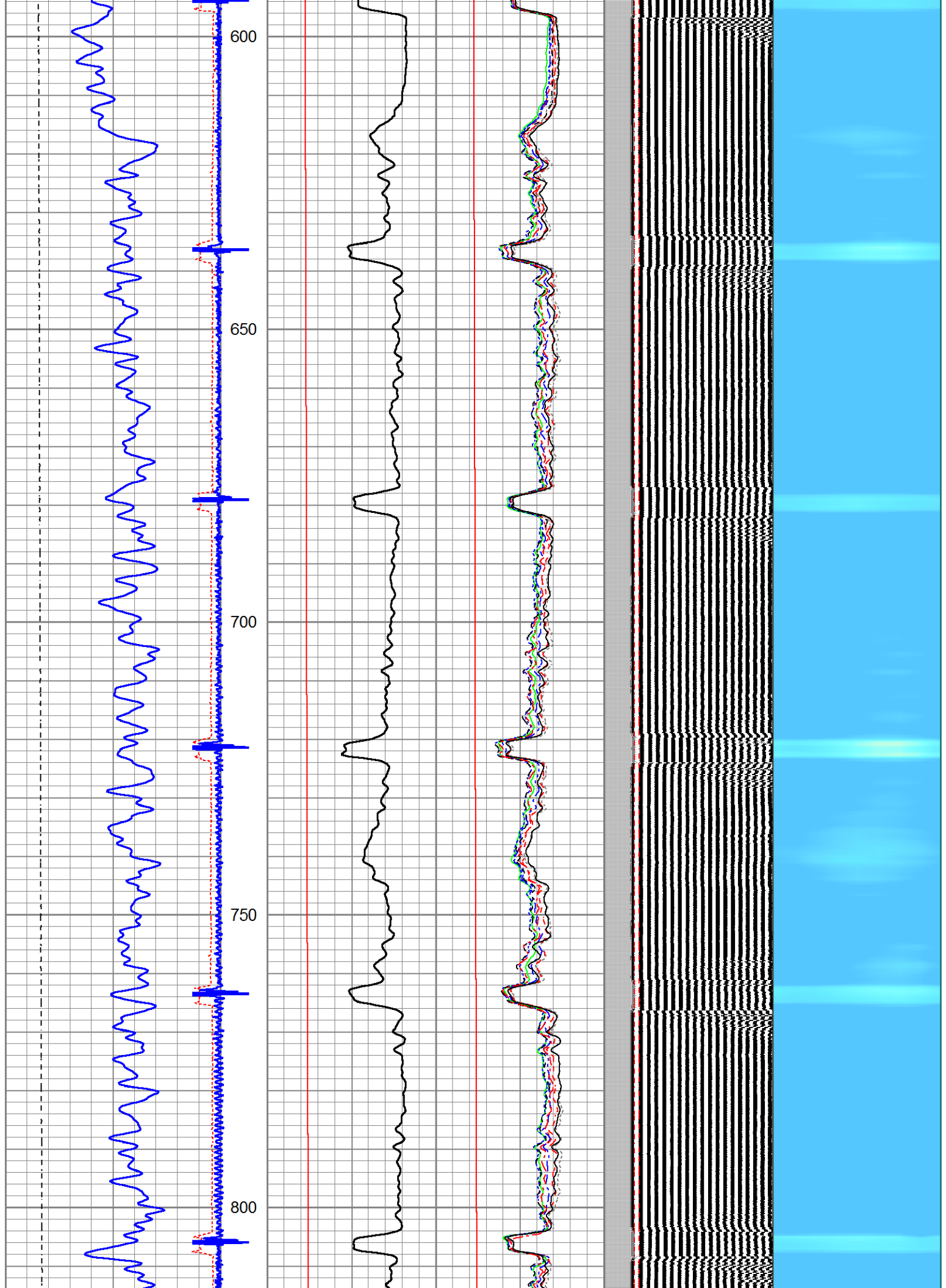
Charted by			Depth in Feet scaled 1:240							
343	TT (usec)	243	0	Amplitude (mV)100	-5	AMPS2	150	200	VDL (usec) 1200	Cement Map
0	GR (GAPI)	200	Amplified Amplitude		-5	AMPS3	150			
0	LTEN (lb)	1500	0	(mV) 10	-5	AMPS4	150	Free Pipe Gate		
		CCL	0	TEMP (degF) 300	-5	AMPS5	150			
					-5	AMPS6	150			
					-5	AMPS7	150			
					-5	AMPS8	150			
					-5	AMPS1	150			
					0	TEMP (degF) 300				

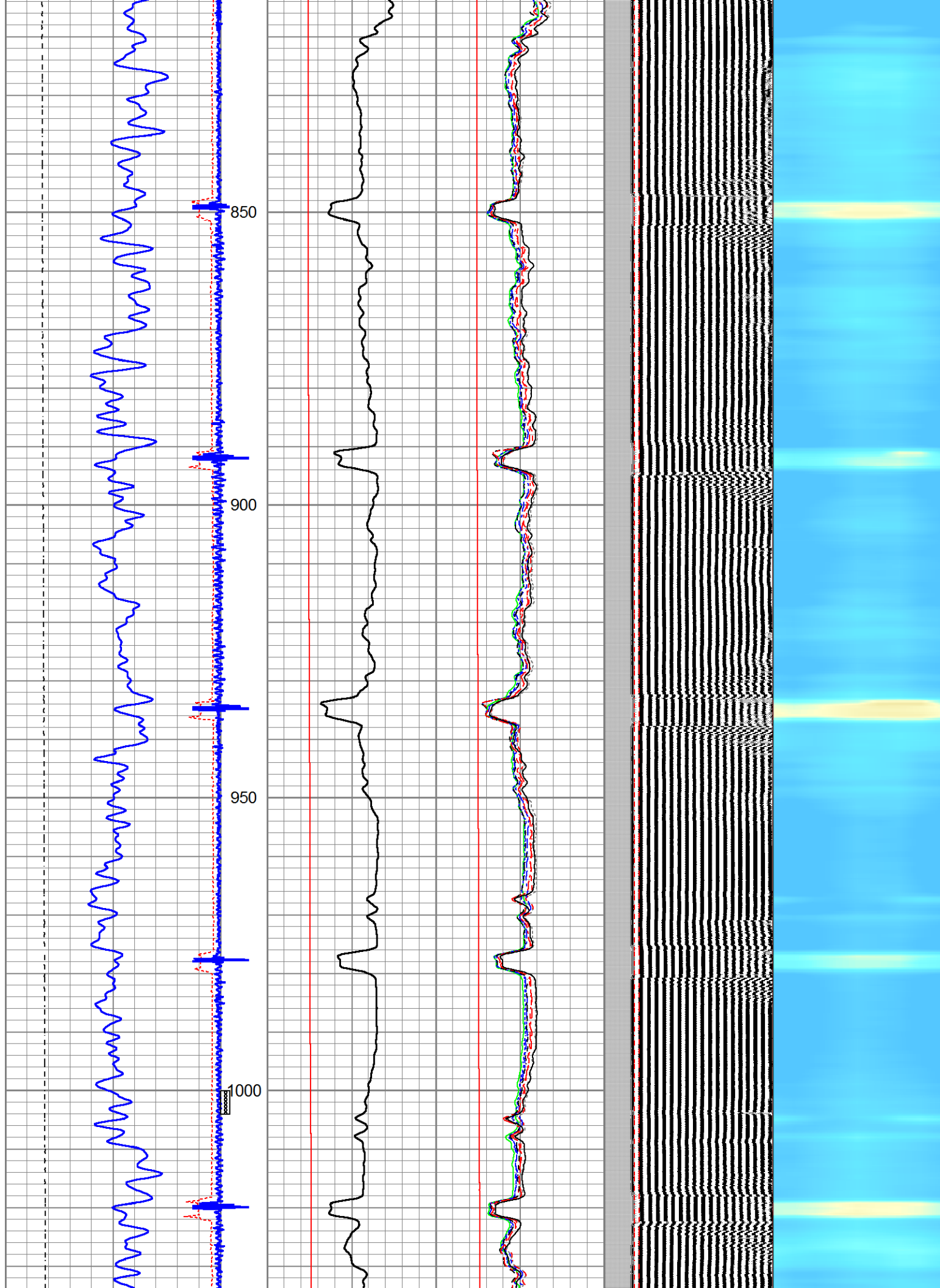


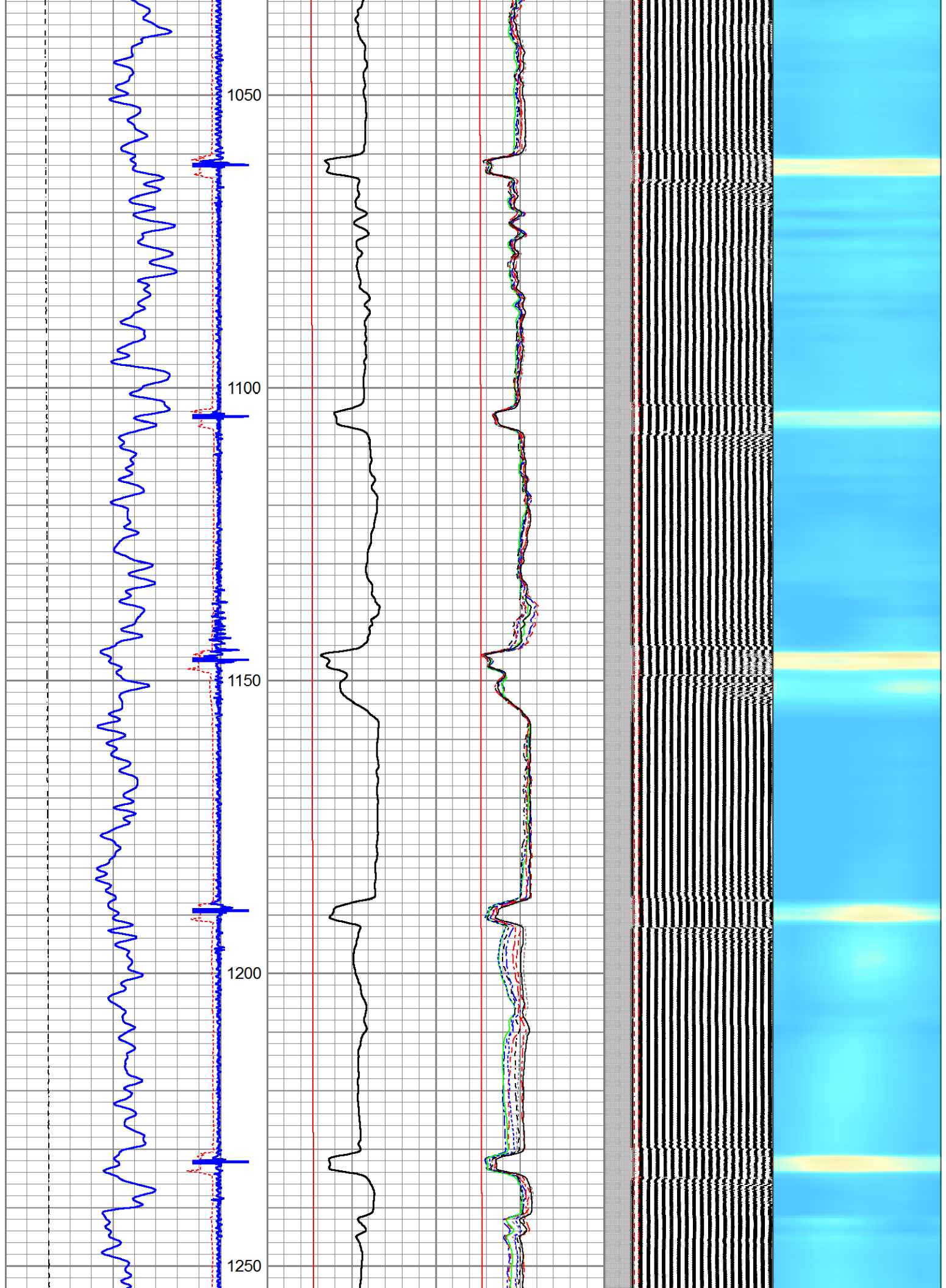




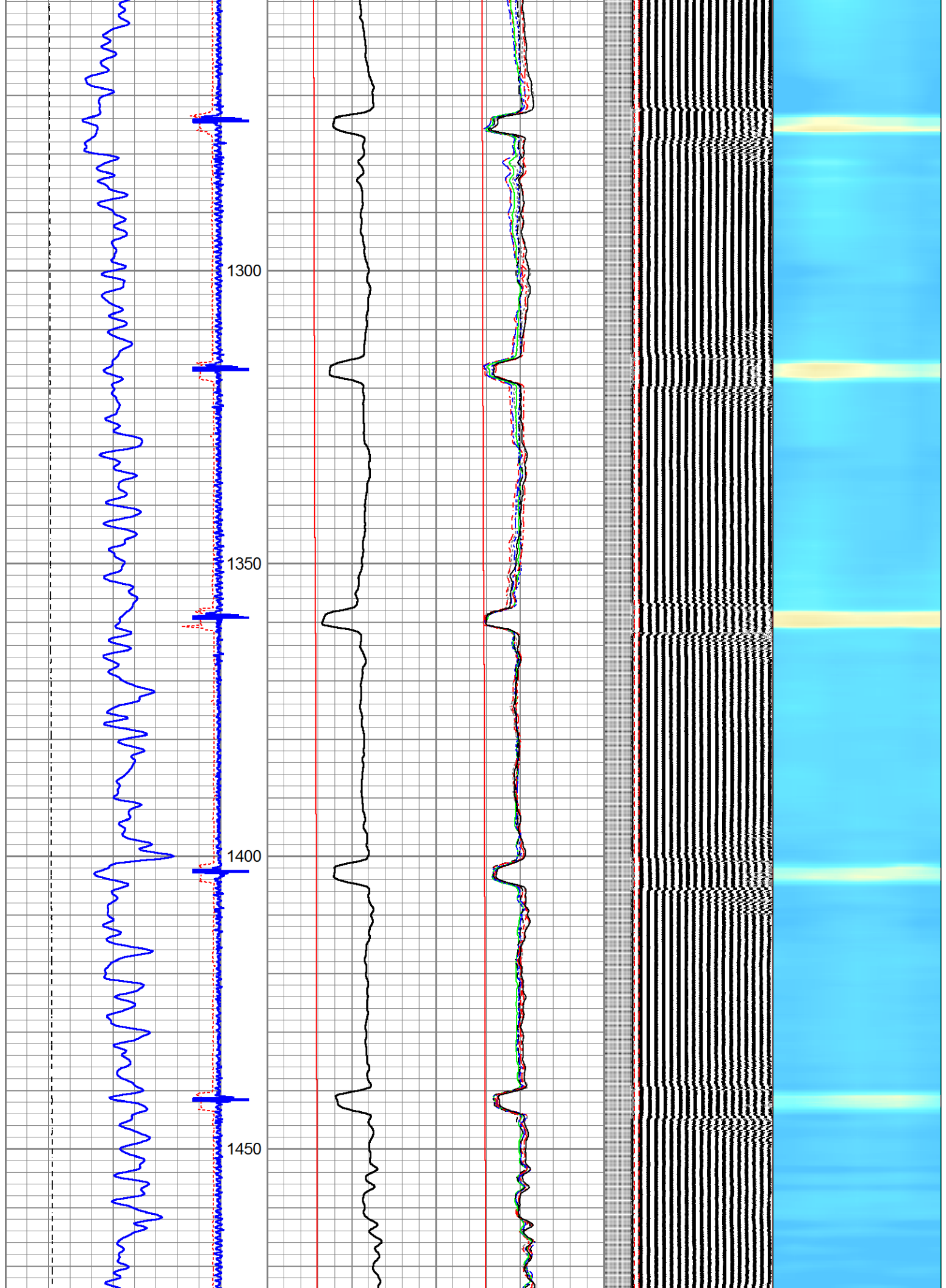


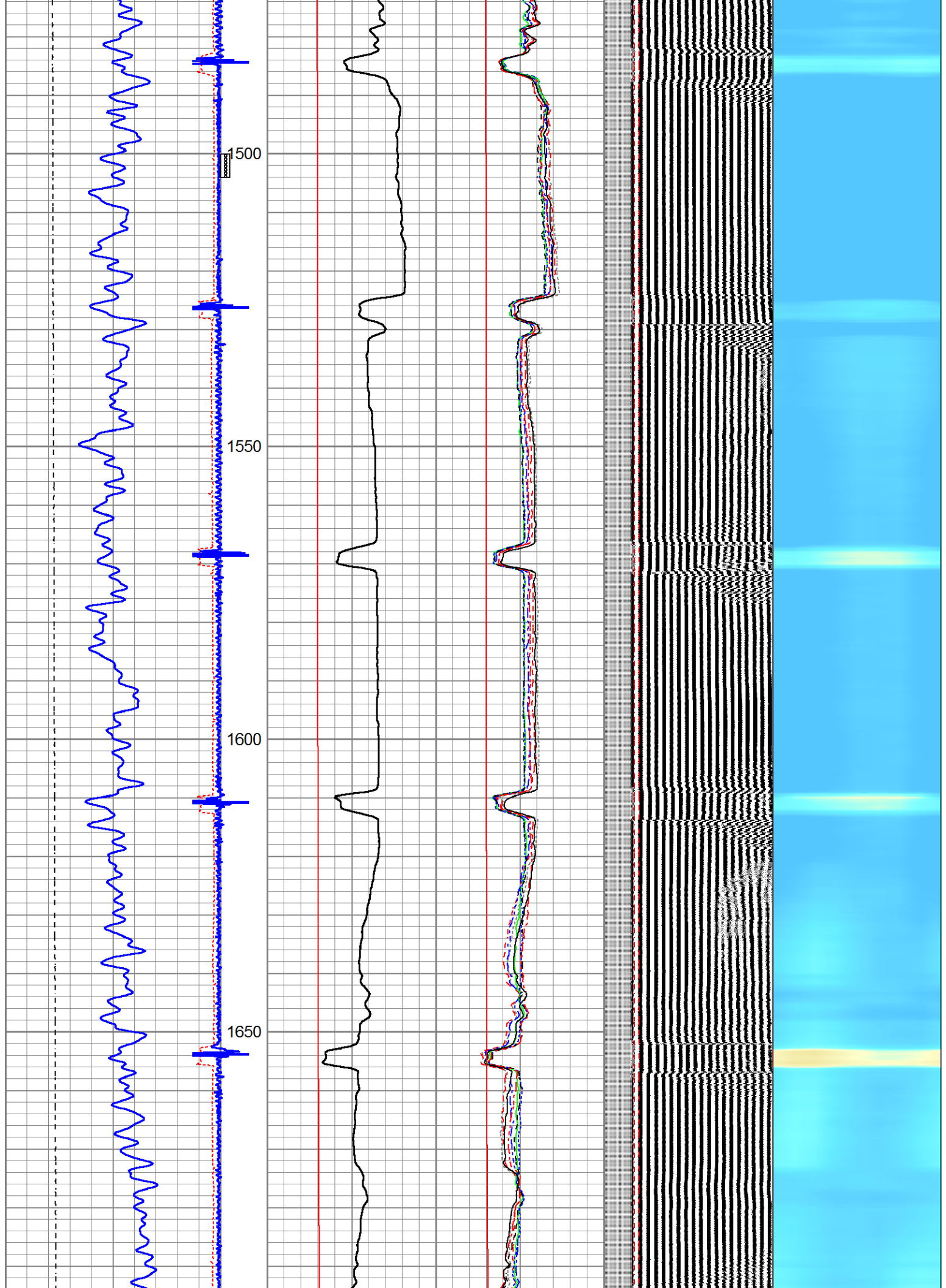


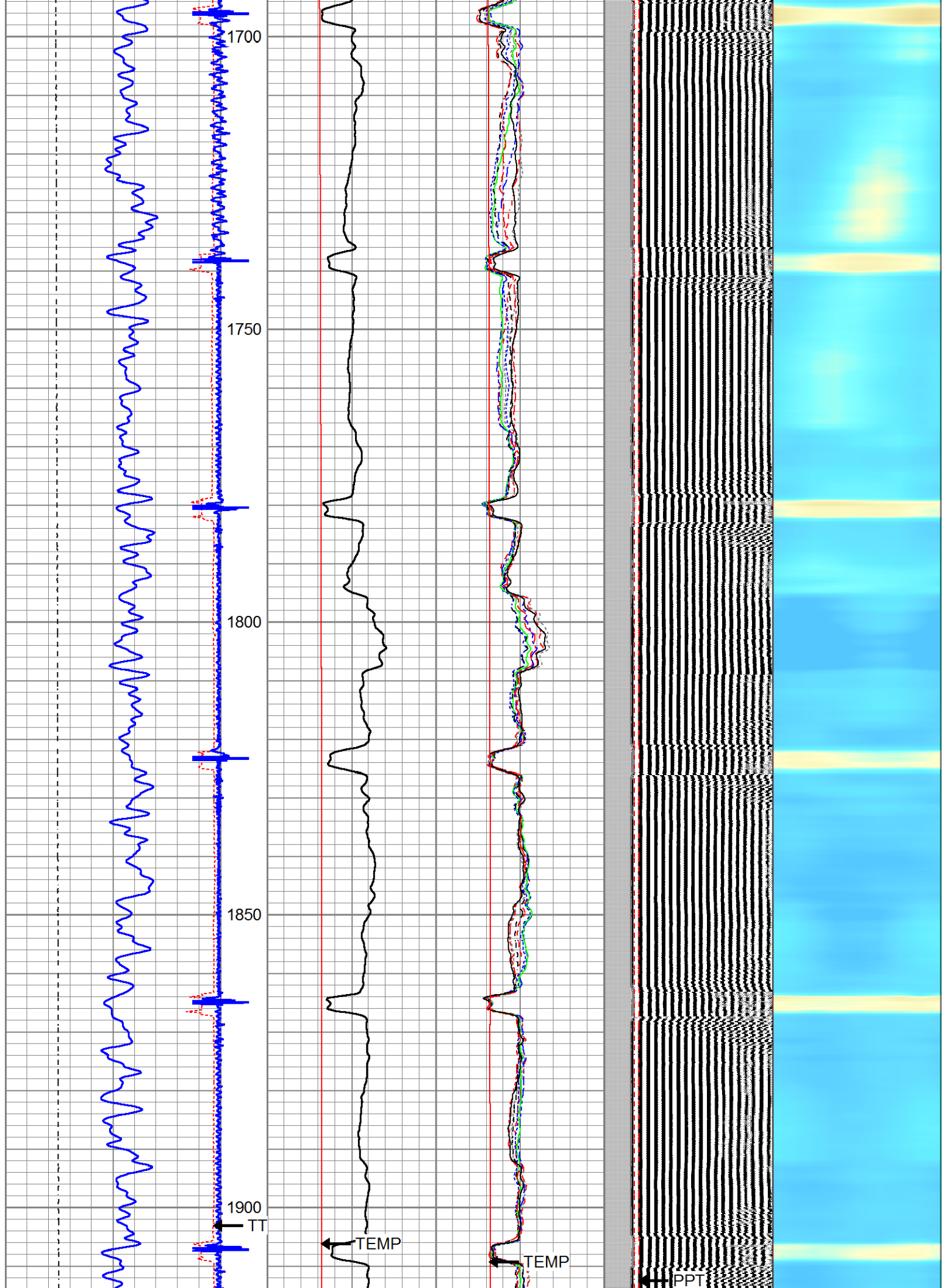




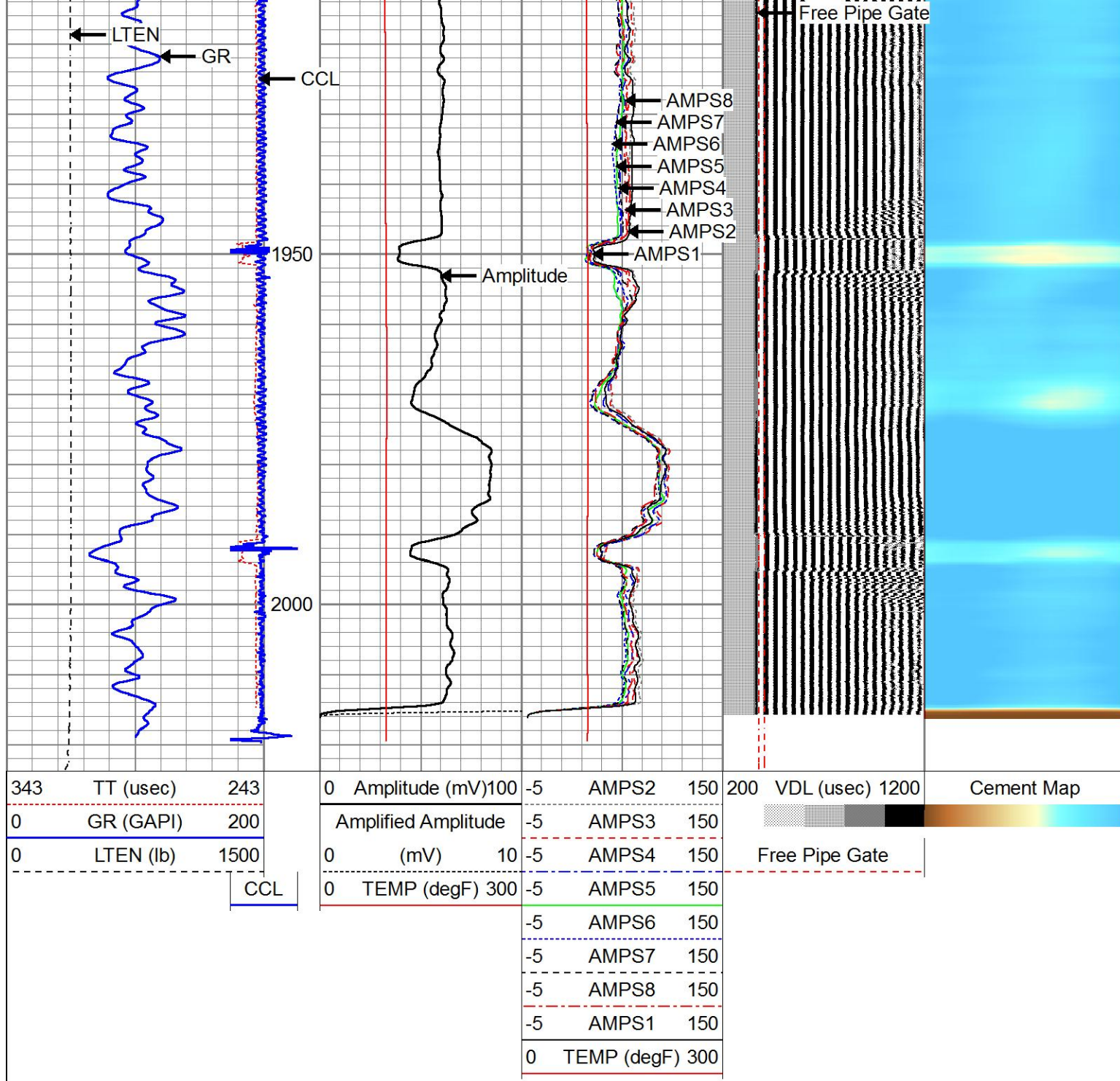












**Company** ANADARKO PETROLEUM  
**Well** HSR TUTEUR 9-27A  
**Field** WATENBERG  
**County** WELD  
**State** COLORADO