

Inspection Photos

4/28/2020

Operator: CHEVRON USA INC - 16700

Location ID: 398839

Rio Blanco County, CO

Aaron Trujillo

NW Reclamation Specialist

COGCC



COLORADO
Oil & Gas Conservation
Commission
Department of Natural Resources

Inspection Photos
Operator Name: CHEVRON USA INC - 16700
Location ID: 398839



Photo 1: Photo taken from the southeast end of the location, facing west. Photos 1-3 provide an overview of the Location from west, northwest to north. Photos show Operator has constructed a berm between the production area, and areas not needed for production to the east; interim areas have not been contoured to their original grade; fill material has not been removed; Interim reclamation of the Location has not been conducted in accordance with 1003 requirements.



Photo 2: See comments under photo 1.

Inspection Photos
Operator Name: CHEVRON USA INC - 16700
Location ID: 398839



Photo 3: See comments under photo 1.



Photo 4: Photo taken from the east of the Location, facing west. Photo shows Operator has not removed fill material on areas subject to 1003 interim reclamation, and lands have not been contoured to their original grade. Interim reclamation of the Location has not been conducted in accordance with 1003 requirements.

Inspection Photos
Operator Name: CHEVRON USA INC - 16700
Location ID: 398839



Photo 5: Photo taken from the east of the Location, facing northwest. See comments under photo 4.



Photo 6: Photo taken from the soil stockpile to the southeast of the Location. Photo shows soils remain bare and exposed; no BMPs have been installed to protect soils in accordance with Rule 1002.c, or to prevent sediment discharge in accordance with Rule 1002.f.

Inspection Photos
Operator Name: CHEVRON USA INC - 16700
Location ID: 398839



Photo 7: Photo taken from east end of the Location, facing northeast. Photo shows soil stockpile on the northeast end of the Location remains bare and exposed; no BMPs have been installed to protect soils in accordance with Rule 1002.c, or to prevent sediment discharge in accordance with Rule 1002.f.



Photo 8: See comments under photo 7.

Inspection Photos
Operator Name: CHEVRON USA INC - 16700
Location ID: 398839



Photo 9: Photo taken from the northeast end of the location, facing south. Photos 1-3 provide an overview of the Location from south, southwest to west. Photos show Operator has constructed a berm between the production area, and areas not needed for production to the east; interim areas have not been contoured to their original grade; fill material has not been removed; Interim reclamation of the Location has not been conducted in accordance with 1003 requirements.



Photo 10: See comments under photo 9.

Inspection Photos
Operator Name: CHEVRON USA INC - 16700
Location ID: 398839



Photo 11: See comments under photo 9.



Photo 12: Photo taken from the southwest end of the Location. Photo shows barrier equipment has been removed from the Location

Inspection Photos
Operator Name: CHEVRON USA INC - 16700
Location ID: 398839

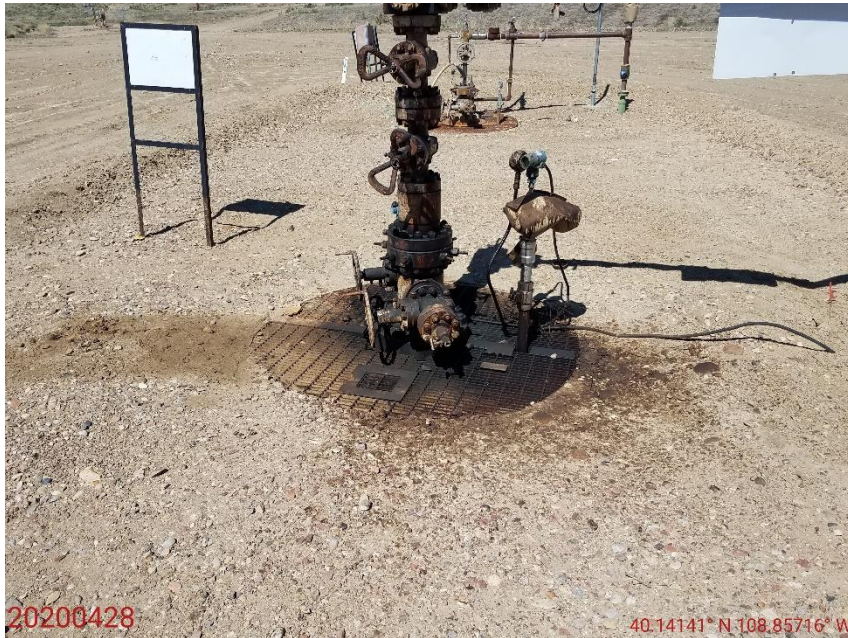


Photo 13: Photo taken from the 153X16 well (103-11464). Photo shows a spill appears to have occurred at well; Stained soils around well and containment cellar.



Photo 14: Continued from photo 13. Photo shows oily fluids within the containment cellar; a spill appears to have occurred at well.



Inspection Photos
Operator Name: CHEVRON USA INC - 16700
Location ID: 398839

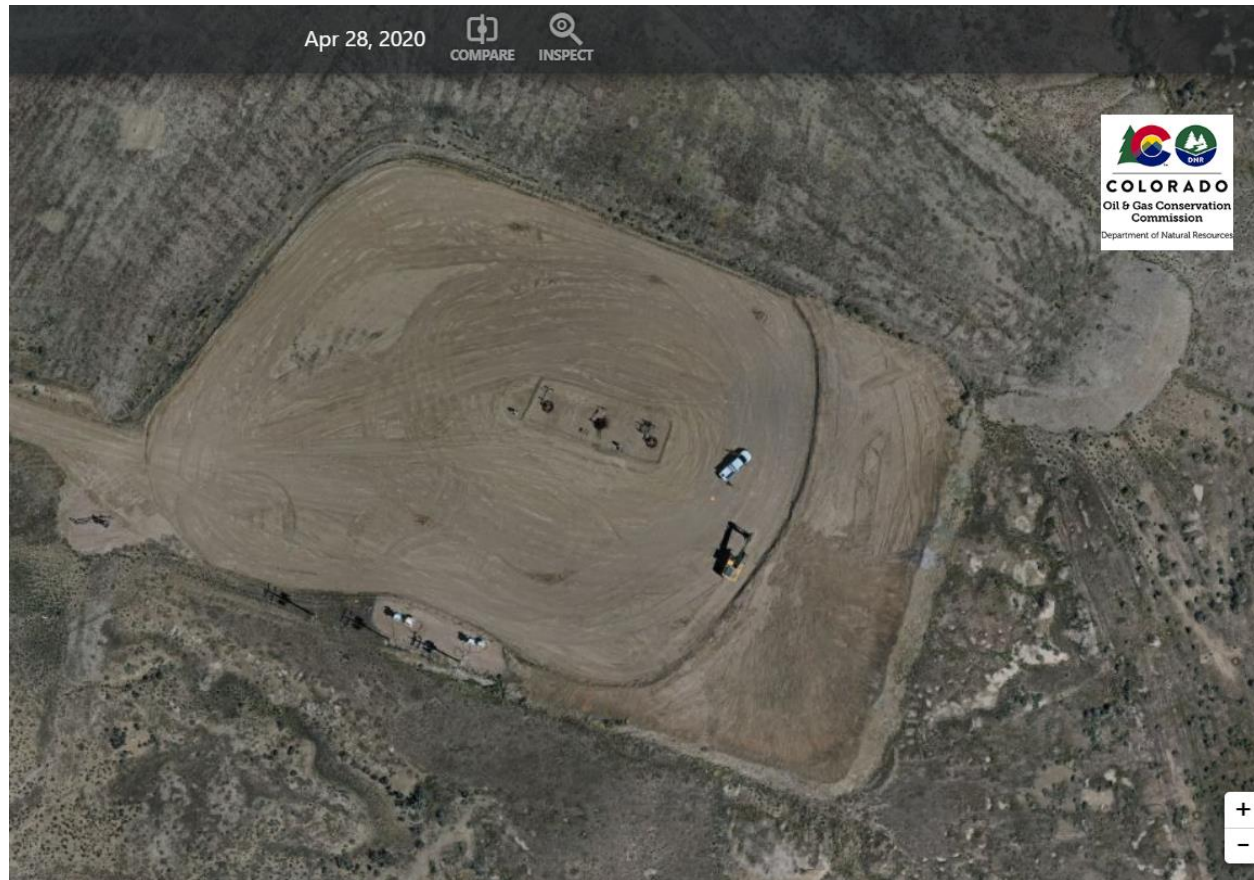


Photo 15: On 4/28/2020, Reclamation specialist Trujillo utilized a SUA to capture aerial imagery of the Location; Photo shows overview of the current pad. Photo shows Operator has constructed a berm between the production area, and areas not needed for production to the east; no additional reclamation activities appear to have been conducted per Rule 1003.b.



Inspection Photos
Operator Name: CHEVRON USA INC - 16700
Location ID: 398839

Report created on April 29, 2020

Captured: April 28, 2020

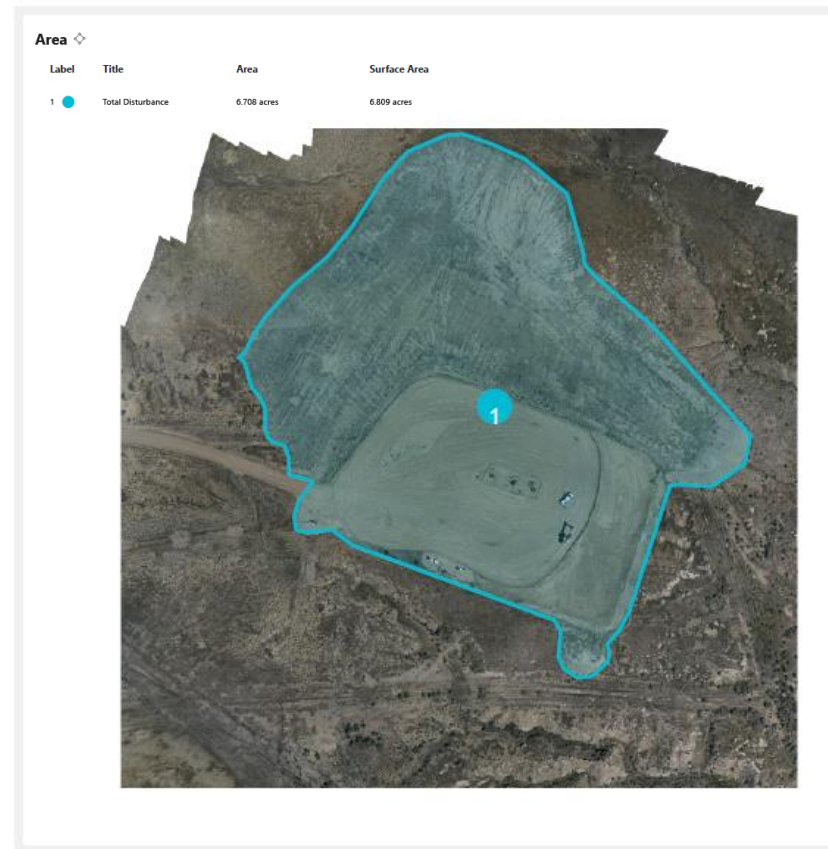


Photo 16: On 4/28/2020, Reclamation specialist Trujillo utilized a SUA to capture aerial imagery of the Location; Based on data collected with a SUA, the total disturbance encompasses approximately 6.6 acres. This exceeds the permitted disturbance area of 4.25 acres based on the information Operator provided in its Oil and Gas Location Assessment Form 2A (#400098646).

Inspection Photos
Operator Name: CHEVRON USA INC - 16700
Location ID: 398839

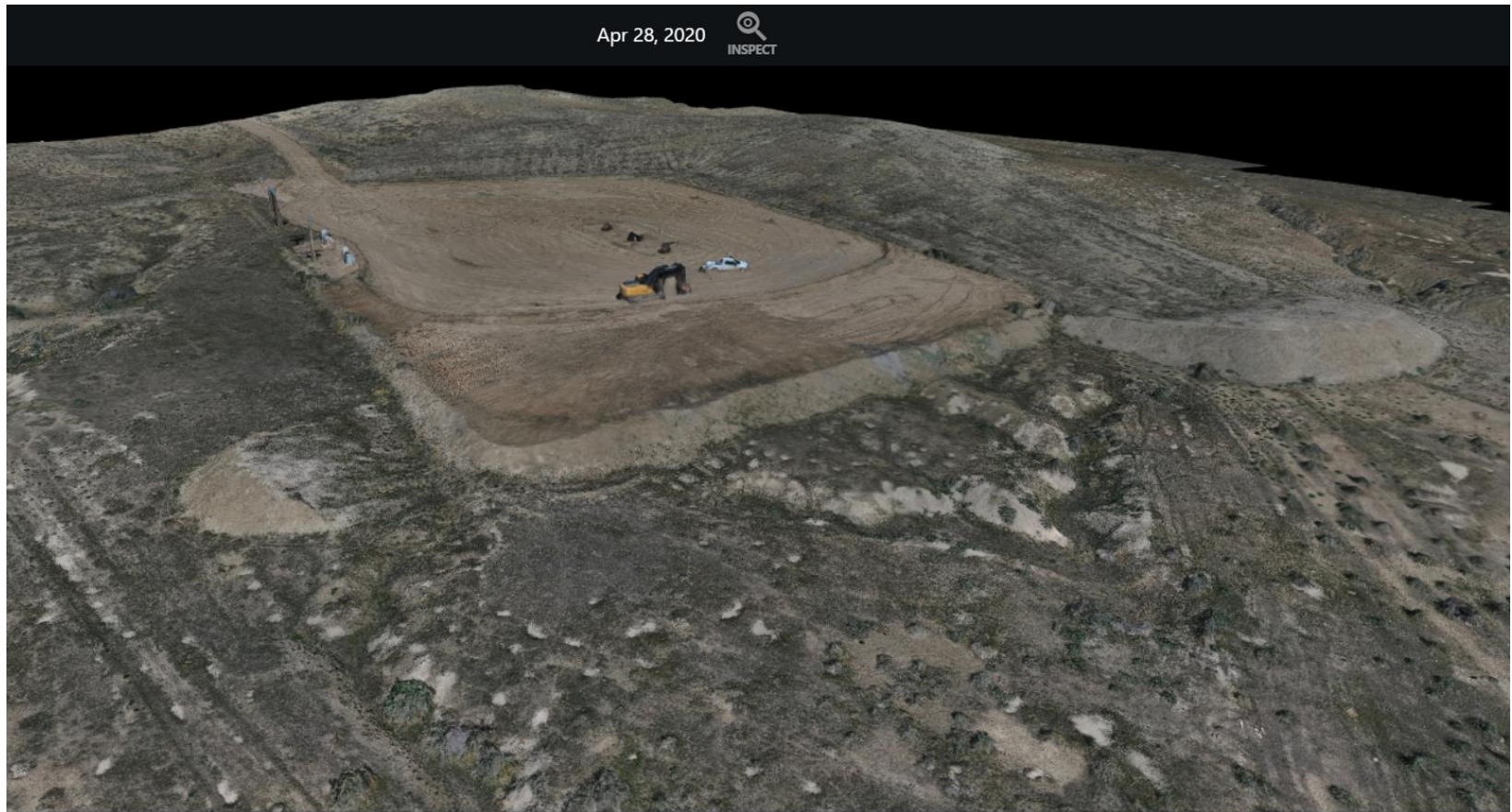


Photo 17: On 4/28/2020, Reclamation specialist Trujillo utilized a SUA to capture aerial imagery of the Location and create a 3-dimensional model of the topography; Photo shows the fill slopes/disturbance on the east end of the location has not been reclaimed and areas returned to their original grade in accordance with Rule 1003.b

