



Crestone Peak Resources

Schlumberger

Plan 2

Borehole:	Well:	Field:	Structure:
Original Hole	State Massive 5-65 2-3 2CH	CO, Arapahoe County (NAD 83 CZ)	Crestone Peak 02-05S-65W (State Massive 5-65 2-3 Pad)

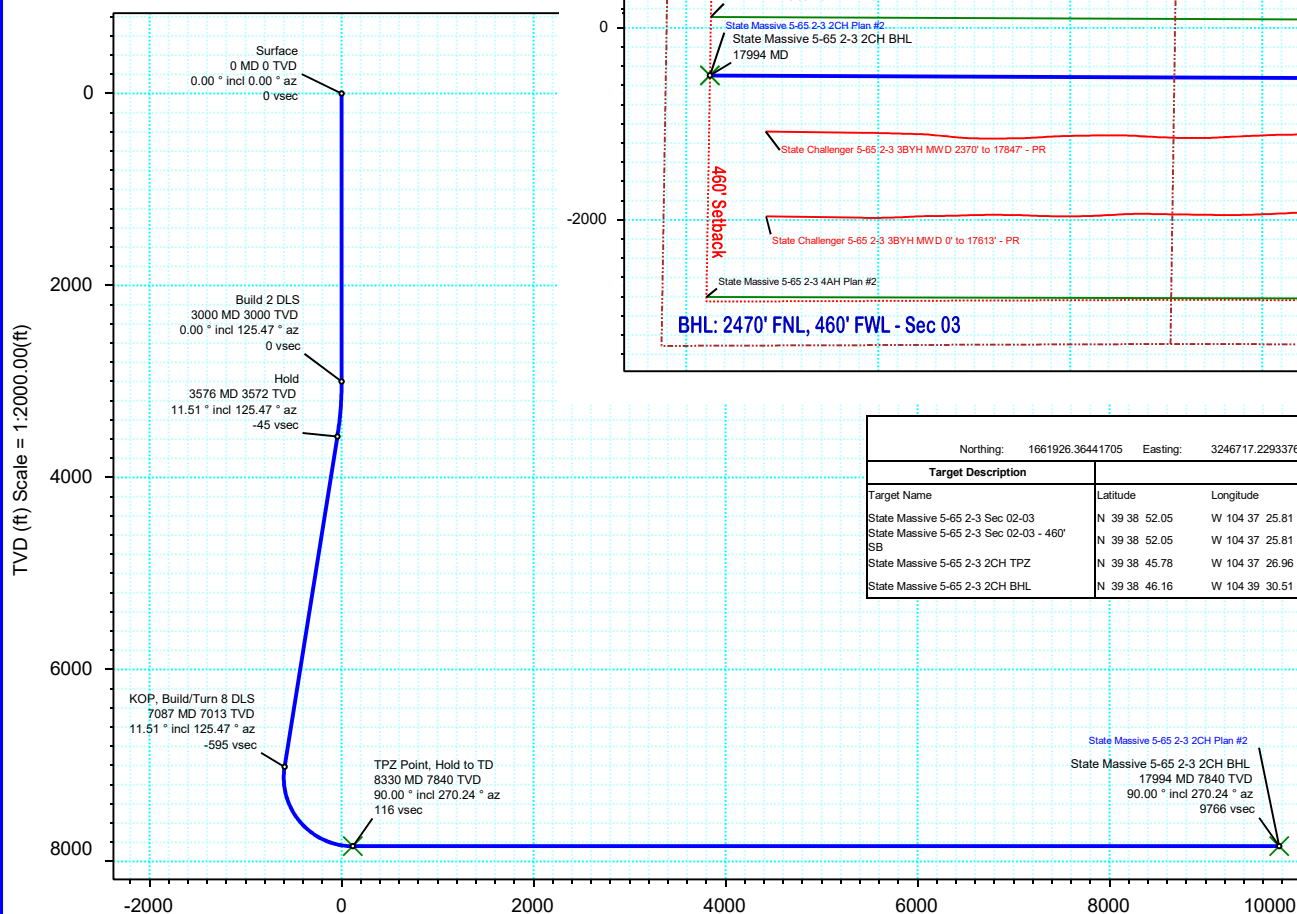
Gravity & Magnetic Parameters					Surface Location					NAD83 Colorado State Plane, Central Zone, US Feet					Miscellaneous		
Model:	HDGM 2019	Dip:	66.382°	Date:	27-Mar-2020	Lat:	N 39 38 51.06	Northing:	1661926.36ftUS	Grid Conv:	0.5526°	Slot:	State Massive 5-65 2-3 2CH	TVD Ref:	KB 28ft(5854ft above MSL)		
MagDec:	8.546°	FS:	51655.688nT	Gravity FS:	998.903mgn (9.80665 Based)	Lon:	W 104 37 25.82	Easting:	3246717.23ftUS	Scale Fact:	0.99998133	Plan:	State Massive 5-65 2-3 2CH Plan #2				

Proposal

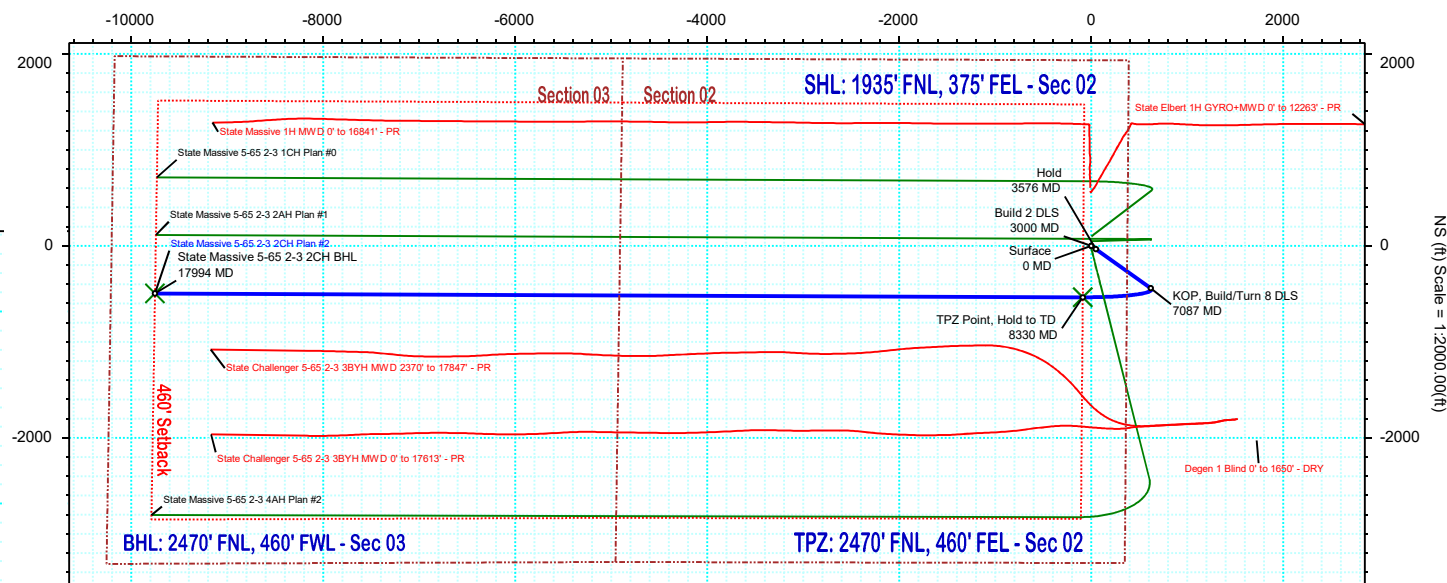
EW (ft) Scale = 1:2000.00(ft)



True North
Tot Corr (M->T 8.546°)
Mag Dec (8.546°)
Grid Conv (0.553°)



Vertical Section (ft) Azim = 267.10° Scale = 1:2000.00(ft) Origin = 0N/-S, 0E/-W



NS (ft) Scale = 1:2000.00(ft)

Surface Location											
Northing: 1661926.36441705		Easting: 3246717.2293376		Latitude: N 39 38 51.06		Longitude: W 104 37 25.82		VSec Azimuth: 267.10			
Target Description		Grid Coord						Local Coord			
Target Name		Latitude	Longitude	Northing	Easting	TVD	VSec	N(+)/S(-)	E(+)/W(-)		
State Massive 5-65 2-3 Sec 02-03		N 39 38 52.05	W 104 37 25.81	1662026.17	3246717.11	5854.00	-5.90	99.81	0.84		
State Massive 5-65 2-3 Sec 02-03 - 460' SB		N 39 38 52.05	W 104 37 25.81	1662026.17	3246717.11	5854.00	-5.90	99.81	0.84		
State Massive 5-65 2-3 2CH TPZ		N 39 38 45.78	W 104 37 26.96	1661391.16	3246633.12	7840.00	116.20	-534.38	-89.27		
State Massive 5-65 2-3 2CH BHL		N 39 38 46.16	W 104 39 30.51	1661338.06	3236969.01	7840.00	9766.16	-494.27	-9753.64		

Critical Points								
Critical Point	MD	INCL	AZIM	TVD	VSEC	N(+)/S(-)	E(+)/W(-)	DLS
Surface	0.00	0.00	0.00	0.00	0.00	0.00	0.00	
Build 2 DLS	3000.00	0.00	125.47	3000.00	0.00	0.00	0.00	0.00
Hold	3575.62	11.51	125.47	3571.76	-45.19	-33.44	46.94	2.00
KOP, Build/Turn 8 DLS	7087.25	11.51	125.47	7012.73	-594.68	-440.11	617.74	0.00
TPZ Point, Hold to TD	8329.53	90.00	270.24	7840.00	116.20	-534.38	-89.27	8.00
State Massive 5-65 2-3 2CH BHL	17993.99	90.00	270.24	7840.00	9766.16	-494.27	-9753.64	0.00

State Massive 5-65 2-3 2CH Plan #2 Proposal Geodetic Report

(Def Plan)

Report Date: April 24, 2020 - 10:25 AM
Client: Crestone Peak Resources
Field: CO, Arapahoe County (NAD 83 CZ)
Structure / Slot: Crestone Peak 02-05S-65W (State Massive 5-65 2-3 Pad) / State Massive 5-65 2-3 2CH
Well: State Massive 5-65 2-3 2CH
Borehole: Original Hole
UWI / API#: Unknown / Unknown
Survey Name: State Massive 5-65 2-3 2CH Plan #2
Survey Date: March 19, 2020
Tort / AHD / DDI / ERD Ratio: 110.895 ° / 11171.295 ft / 6.454 / 1.425
Coordinate Reference System: NAD83 Colorado State Plane, Central Zone, US Feet
Location Lat / Long: N 39° 38' 51.06120", W 104° 37' 25.81680"
Location Grid N/E Y/X: N 1661926.364 ftUS, E 3246717.229 ftUS
CRS Grid Convergence Angle: 0.5526 °
Grid Scale Factor: 0.99998133
Version / Patch: 2.10.787.0

Survey / DLS Computation: Minimum Curvature / Lubinski
Vertical Section Azimuth: 267.099 ° (True North)
Vertical Section Origin: 0.000 ft, 0.000 ft
TVD Reference Datum: KB 28ft
TVD Reference Elevation: 5854.000 ft above MSL
Seabed / Ground Elevation: 5826.000 ft above MSL
Magnetic Declination: 8.546 °
Total Gravity Field Strength: 998.9026mgn (9.80665 Based)
Gravity Model: GARM
Total Magnetic Field Strength: 51655.688 nT
Magnetic Dip Angle: 66.382 °
Declination Date: March 27, 2020
Magnetic Declination Model: HDGM 2019
North Reference: True North
Grid Convergence Used: 0.0000 °
Total Corr Mag North→True North: 8.5465 °
Local Coord Referenced To: Well Head

Comments	MD (ft)	Incl (°)	Azim True (°)	TVD (ft)	VSEC (ft)	NS (ft)	EW (ft)	DLS (°/100ft)	Northing (ftUS)	Easting (ftUS)	Latitude (°)	Longitude (°)	
Surface	0.00	0.00	0.00	0.00	0.00	0.00	0.00	0.00	N/A	1661926.36	3246717.23	39.647517	-104.623838
	100.00	0.00	125.47	100.00	0.00	0.00	0.00	0.00	1661926.36	3246717.23	39.647517	-104.623838	
	200.00	0.00	125.47	200.00	0.00	0.00	0.00	0.00	1661926.36	3246717.23	39.647517	-104.623838	
	300.00	0.00	125.47	300.00	0.00	0.00	0.00	0.00	1661926.36	3246717.23	39.647517	-104.623838	
	400.00	0.00	125.47	400.00	0.00	0.00	0.00	0.00	1661926.36	3246717.23	39.647517	-104.623838	
	500.00	0.00	125.47	500.00	0.00	0.00	0.00	0.00	1661926.36	3246717.23	39.647517	-104.623838	
	600.00	0.00	125.47	600.00	0.00	0.00	0.00	0.00	1661926.36	3246717.23	39.647517	-104.623838	
	700.00	0.00	125.47	700.00	0.00	0.00	0.00	0.00	1661926.36	3246717.23	39.647517	-104.623838	
	800.00	0.00	125.47	800.00	0.00	0.00	0.00	0.00	1661926.36	3246717.23	39.647517	-104.623838	
	900.00	0.00	125.47	900.00	0.00	0.00	0.00	0.00	1661926.36	3246717.23	39.647517	-104.623838	
	1000.00	0.00	125.47	1000.00	0.00	0.00	0.00	0.00	1661926.36	3246717.23	39.647517	-104.623838	
	1100.00	0.00	125.47	1100.00	0.00	0.00	0.00	0.00	1661926.36	3246717.23	39.647517	-104.623838	
	1200.00	0.00	125.47	1200.00	0.00	0.00	0.00	0.00	1661926.36	3246717.23	39.647517	-104.623838	
	1300.00	0.00	125.47	1300.00	0.00	0.00	0.00	0.00	1661926.36	3246717.23	39.647517	-104.623838	
	1400.00	0.00	125.47	1400.00	0.00	0.00	0.00	0.00	1661926.36	3246717.23	39.647517	-104.623838	
	1500.00	0.00	125.47	1500.00	0.00	0.00	0.00	0.00	1661926.36	3246717.23	39.647517	-104.623838	
	1600.00	0.00	125.47	1600.00	0.00	0.00	0.00	0.00	1661926.36	3246717.23	39.647517	-104.623838	
	1700.00	0.00	125.47	1700.00	0.00	0.00	0.00	0.00	1661926.36	3246717.23	39.647517	-104.623838	
	1800.00	0.00	125.47	1800.00	0.00	0.00	0.00	0.00	1661926.36	3246717.23	39.647517	-104.623838	
	1900.00	0.00	125.47	1900.00	0.00	0.00	0.00	0.00	1661926.36	3246717.23	39.647517	-104.623838	
	2000.00	0.00	125.47	2000.00	0.00	0.00	0.00	0.00	1661926.36	3246717.23	39.647517	-104.623838	
	2100.00	0.00	125.47	2100.00	0.00	0.00	0.00	0.00	1661926.36	3246717.23	39.647517	-104.623838	
	2200.00	0.00	125.47	2200.00	0.00	0.00	0.00	0.00	1661926.36	3246717.23	39.647517	-104.623838	
	2300.00	0.00	125.47	2300.00	0.00	0.00	0.00	0.00	1661926.36	3246717.23	39.647517	-104.623838	
	2400.00	0.00	125.47	2400.00	0.00	0.00	0.00	0.00	1661926.36	3246717.23	39.647517	-104.623838	
	2500.00	0.00	125.47	2500.00	0.00	0.00	0.00	0.00	1661926.36	3246717.23	39.647517	-104.623838	
	2600.00	0.00	125.47	2600.00	0.00	0.00	0.00	0.00	1661926.36	3246717.23	39.647517	-104.623838	
	2700.00	0.00	125.47	2700.00	0.00	0.00	0.00	0.00	1661926.36	3246717.23	39.647517	-104.623838	
	2800.00	0.00	125.47	2800.00	0.00	0.00	0.00	0.00	1661926.36	3246717.23	39.647517	-104.623838	
Build 2 DLS	2900.00	0.00	125.47	2900.00	0.00	0.00	0.00	0.00	1661926.36	3246717.23	39.647517	-104.623838	
	3000.00	0.00	125.47	3000.00	0.00	0.00	0.00	0.00	1661926.36	3246717.23	39.647517	-104.623838	
	3100.00	2.00	125.47	3099.98	-1.37	-1.01	1.42	2.00	1661925.37	3246718.66	39.647514	-104.623833	
	3200.00	4.00	125.47	3199.84	-5.47	-4.05	5.68	2.00	1661922.37	3246722.95	39.647506	-104.623818	
	3300.00	6.00	125.47	3299.45	-12.30	-9.11	12.78	2.00	1661917.38	3246730.10	39.647492	-104.623793	
	3400.00	8.00	125.47	3398.70	-21.86	-16.18	22.71	2.00	1661910.41	3246740.09	39.647473	-104.623757	
Hold	3500.00	10.00	125.47	3497.47	-34.12	-25.25	35.45	2.00	1661901.45	3246752.92	39.647448	-104.623712	
	3575.62	11.51	125.47	3571.76	-45.19	-33.44	46.94	2.00	1661893.38	3246764.49	39.647425	-104.623671	
	3600.00	11.51	125.47	3595.64	-49.00	-36.27	50.90	0.00	1661890.59	3246768.48	39.647417	-104.623657	
	3700.00	11.51	125.47	3693.63	-64.65	-47.85	67.16	0.00	1661879.17	3246784.84	39.647386	-104.623600	
	3800.00	11.51	125.47	3791.62	-80.30	-59.43	83.41	0.00	1661867.75	3246801.21	39.647354	-104.623542	
	3900.00	11.51	125.47	3889.61	-95.95	-71.01	99.67	0.00	1661856.32	3246817.57	39.647322	-104.623484	
	4000.00	11.51	125.47	3987.60	-111.59	-82.59	115.92	0.00	1661844.90	3246833.94	39.647290	-104.623426	
	4100.00	11.51	125.47	4085.58	-127.24	-94.17	132.18	0.00	1661833.48	3246850.31	39.647258	-104.623369	
	4200.00	11.51	125.47	4183.57	-142.89	-105.75	148.43	0.00	1661822.05	3246866.67	39.647227	-104.623311	
	4300.00	11.51	125.47	4281.56	-158.54	-117.33	164.69	0.00	1661810.63	3246883.04	39.647195	-104.623253	
	4400.00	11.51	125.47	4379.55	-174.18	-128.91	180.94	0.00	1661799.21	3246899.40	39.647163	-104.623195	
	4500.00	11.51	125.47	4477.54	-189.83	-140.49	197.20	0.00	1661787.78	3246915.77	39.647131	-104.623138	
	4600.00	11.51	125.47	4575.53	-205.48	-152.07	213.45	0.00	1661776.36	3246932.13	39.647100	-104.623080	
	4700.00	11.51	125.47	4673.51	-221.13	-163.65	229.70	0.00	1661764.94	3246948.50	39.647068	-104.623022	
	4800.00	11.51	125.47	4771.50	-236.78	-175.23	245.96	0.00	1661753.52	3246964.86	39.647036	-104.622965	
	4900.00	11.51	125.47	4869.49	-252.42	-186.81	262.21	0.00	1661742.09	3246981.23	39.647004	-104.622907	
	5000.00	11.51	125.47	4967.48	-268.07	-198.39	278.47	0.00	1661730.67	3246997.59	39.646972	-104.622849	
	5100.00	11.51	125.47	5065.47	-283.72	-209.97	294.72	0.00	1661719.25	3247013.96	39.646941	-104.622791	
	5200.00	11.51	125.47	5163.45	-299.37	-221.56	310.98	0.00	1661707.82	3247030.32	39.646909	-104.622734	
	5300.00	11.51	125.47	5261.44	-315.01	-233.14	327.23	0.00	1661696.40	3247046.69	39.646877	-104.622676	
	5400.00	11.51	125.47	5359.43	-330.66	-244.72	343.49	0.00	1661684.98	3247063.05	39.646845	-104.622618	
	5500.00	11.51	125.47	5457.42	-346.31	-256.30	359.74	0.00	1661673.55	3247079.42	39.646813	-104.622561	
	5600.00	11.51	125.47	5555.41	-361.96	-267.88	376.00	0.00	1661662.13	3247095.78	39.646782	-104.622503	
	5700.00	11.51	125.47	5653.40	-377.61	-279.46	392.25	0.00	1661650.71	3247112.15	39.646750	-104.622445	
	5800.00	11.51	125.47	5751.38	-393.25	-291.04	408.51	0.00	1661639.28	3247128.51	39.646718	-104.622387	
	5900.00	11.51	125.47	5849.37	-408.90	-302.62	424.76	0.00	1661627.86	3247144.88	39.646686	-104.622330	
	6000.00	11.51	125.47	5947.36	-424.55	-314.20	441.02	0.00	1661616.44	3247161.25	39.646654	-104.622272	
	6100.00	11.51	125.47	6045.35	-440.20	-325.78	457.27	0.00	1661605.02	3247177.61	39.646623	-104.622214	
	6200.00	11.51	125.47	6143.34	-455.84	-337.36	473.52	0.00	1661593.59	3247193.98	39.646591	-104.622156	
	6300.00	11.51	125.47	6241.32	-471.49	-348.94	489.78	0.00	1661582.17	3247210.34	39.646559	-104.622099	
	6400.00	11.51	125.47	6339.31	-487.14	-360.52	506.03	0.00	1661570.75	3247226.71	39.646527	-104.622041	
	6500.00	11.51	125.47	6437.30	-502.79	-372.10	522.29	0.00	1661559.32	3247243.07	39.646495	-104.621983	
	6600.00	11.51	125.47	6535.29	-518.44	-383.68	538.54	0.00	1661547.90	3247259.44	39.646464	-104.621926	
	6700.00	11.51	125.47	6633.28	-534.08	-395.26	554.80	0.00	1661536.48	3247275.80	39.646432	-104.621868	
	6800.00	11.51	125.47	6731.26	-549.73	-406.85	571.05	0.00	1661525.05	3247292.17	39.646400	-104.621810	
	6900.00	11.51	125.47	6829.25	-565.38	-418.43	587.31	0.00	1661513.63	3247308.53	39.646368	-104.621752	
	7000.00	11.51	125.47	6927.24	-581.03	-430.01	603.56	0.00	1661502.21	3247324.90	39.646337	-104.621695	
KOP, Build/Turn 8 DLS	7087.25	11.51	125.47	7012.73	-594.68	-440.11	617.74	0.00	1661492.24	3247339.18	39.646309	-104.621644	
	7100.00	10.70	128.68	7025.25	-596.56	-441.59	619.70	8.00	1661490.78	3247341.15	39.646305	-104.621637	
	7200.00	6.71	177.13	7124.20	-603.51	-453.25	627.26	8.00	1661479.20	3247348.82	39.646273	-104.621611	
</													

Comments	MD (ft)	Incl (°)	Azim True (°)	TVD (ft)	VSEC (ft)	NS (ft)	EW (ft)	DLS (°/100ft)	Northing (ftUS)	Easting (ftUS)	Latitude (°)	Longitude (°)
	7400.00	16.98	247.61	7320.43	-575.80	-476.19	600.67	8.00	1661456.00	3247322.45	39.646210	-104.621705
	7500.00	24.52	255.31	7413.89	-541.67	-487.03	567.04	8.00	1661444.83	3247288.93	39.646180	-104.621824
	7600.00	32.27	259.51	7501.81	-494.82	-497.17	520.65	8.00	1661434.25	3247242.64	39.646152	-104.621989
	7700.00	40.11	262.22	7582.46	-436.17	-506.41	462.39	8.00	1661424.45	3247184.47	39.646127	-104.622196
	7800.00	47.99	264.16	7654.28	-366.86	-514.56	393.41	8.00	1661415.64	3247115.57	39.646104	-104.622441
	7900.00	55.90	265.68	7715.87	-288.23	-521.47	315.03	8.00	1661407.97	3247037.27	39.646085	-104.622719
	8000.00	63.83	266.93	7766.03	-201.83	-527.00	228.79	8.00	1661401.60	3246951.09	39.646070	-104.623026
	8100.00	71.77	268.02	7803.78	-109.32	-531.06	136.37	8.00	1661396.66	3246858.71	39.646059	-104.623354
	8200.00	79.71	269.02	7828.40	-12.51	-533.55	39.56	8.00	1661393.23	3246761.93	39.646052	-104.623698
	8300.00	87.65	269.96	7839.40	86.72	-534.43	-59.75	8.00	1661391.40	3246662.64	39.646050	-104.624050
TPZ Point, Hold to TD	8329.53	90.00	270.24	7840.00	116.20	-534.38	-89.27	8.00	1661391.16	3246633.12	39.646050	-104.624155
	8400.00	90.00	270.24	7840.00	186.56	-534.08	-159.74	0.00	1661390.78	3246562.65	39.646051	-104.624405
	8500.00	90.00	270.24	7840.00	286.41	-533.67	-259.74	0.00	1661390.23	3246462.66	39.646052	-104.624760
	8600.00	90.00	270.24	7840.00	386.26	-533.25	-359.74	0.00	1661389.68	3246362.66	39.646053	-104.625115
	8700.00	90.00	270.24	7840.00	486.11	-532.84	-459.73	0.00	1661389.13	3246262.66	39.646054	-104.625471
	8800.00	90.00	270.24	7840.00	585.96	-532.42	-559.73	0.00	1661388.58	3246162.67	39.646055	-104.625826
	8900.00	90.00	270.24	7840.00	685.81	-532.01	-659.73	0.00	1661388.03	3246062.67	39.646056	-104.626181
	9000.00	90.00	270.24	7840.00	785.66	-531.59	-759.73	0.00	1661387.48	3245962.68	39.646058	-104.626536
	9100.00	90.00	270.24	7840.00	885.51	-531.18	-859.73	0.00	1661386.93	3245862.68	39.646059	-104.626891
	9200.00	90.00	270.24	7840.00	985.36	-530.76	-959.73	0.00	1661386.38	3245762.68	39.646060	-104.627246
	9300.00	90.00	270.24	7840.00	1085.21	-530.35	-1059.73	0.00	1661385.83	3245662.69	39.646061	-104.627601
	9400.00	90.00	270.24	7840.00	1185.06	-529.93	-1159.73	0.00	1661385.28	3245562.69	39.646062	-104.627956
	9500.00	90.00	270.24	7840.00	1284.91	-529.52	-1259.73	0.00	1661384.73	3245462.69	39.646063	-104.628311
	9600.00	90.00	270.24	7840.00	1384.76	-529.10	-1359.73	0.00	1661384.18	3245362.70	39.646064	-104.628666
	9700.00	90.00	270.24	7840.00	1484.61	-528.69	-1459.73	0.00	1661383.63	3245262.70	39.646065	-104.629022
	9800.00	90.00	270.24	7840.00	1584.46	-528.27	-1559.72	0.00	1661383.08	3245162.70	39.646067	-104.629377
	9900.00	90.00	270.24	7840.00	1684.31	-527.86	-1659.72	0.00	1661382.53	3245062.71	39.646068	-104.629732
	10000.00	90.00	270.24	7840.00	1784.16	-527.44	-1759.72	0.00	1661381.99	3244962.71	39.646069	-104.630087
	10100.00	90.00	270.24	7840.00	1884.01	-527.03	-1859.72	0.00	1661381.44	3244862.71	39.646070	-104.630442
	10200.00	90.00	270.24	7840.00	1983.86	-526.61	-1959.72	0.00	1661380.89	3244762.72	39.646071	-104.630797
	10300.00	90.00	270.24	7840.00	2083.71	-526.20	-2059.72	0.00	1661380.34	3244662.72	39.646072	-104.631152
	10400.00	90.00	270.24	7840.00	2183.56	-525.78	-2159.72	0.00	1661379.79	3244562.73	39.646073	-104.631507
	10500.00	90.00	270.24	7840.00	2283.41	-525.37	-2259.72	0.00	1661379.24	3244462.73	39.646074	-104.631862
	10600.00	90.00	270.24	7840.00	2383.26	-524.95	-2359.72	0.00	1661378.69	3244362.73	39.646076	-104.632218
	10700.00	90.00	270.24	7840.00	2483.11	-524.54	-2459.72	0.00	1661378.14	3244262.74	39.646077	-104.632573
	10800.00	90.00	270.24	7840.00	2582.96	-524.12	-2559.72	0.00	1661377.59	3244162.74	39.646078	-104.632928
	10900.00	90.00	270.24	7840.00	2682.81	-523.71	-2659.72	0.00	1661377.04	3244062.74	39.646079	-104.633283
	11000.00	90.00	270.24	7840.00	2782.66	-523.29	-2759.71	0.00	1661376.49	3243962.75	39.646080	-104.633638
	11100.00	90.00	270.24	7840.00	2882.51	-522.88	-2859.71	0.00	1661375.94	3243862.75	39.646081	-104.633993
	11200.00	90.00	270.24	7840.00	2982.36	-522.46	-2959.71	0.00	1661375.39	3243762.75	39.646082	-104.634348
	11300.00	90.00	270.24	7840.00	3082.21	-522.05	-3059.71	0.00	1661374.84	3243662.76	39.646083	-104.634703
	11400.00	90.00	270.24	7840.00	3182.06	-521.63	-3159.71	0.00	1661374.29	3243562.76	39.646084	-104.635058
	11500.00	90.00	270.24	7840.00	3281.91	-521.22	-3259.71	0.00	1661373.74	3243462.76	39.646086	-104.635413
	11600.00	90.00	270.24	7840.00	3381.76	-520.80	-3359.71	0.00	1661373.19	3243362.77	39.646087	-104.635769
	11700.00	90.00	270.24	7840.00	3481.61	-520.39	-3459.71	0.00	1661372.64	3243262.77	39.646088	-104.636124
	11800.00	90.00	270.24	7840.00	3581.46	-519.97	-3559.71	0.00	1661372.10	3243162.78	39.646089	-104.636479
	11900.00	90.00	270.24	7840.00	3681.31	-519.56	-3659.71	0.00	1661371.55	3243062.78	39.646090	-104.636834
	12000.00	90.00	270.24	7840.00	3781.16	-519.14	-3759.71	0.00	1661371.00	3242962.78	39.646091	-104.637189
	12100.00	90.00	270.24	7840.00	3881.01	-518.73	-3859.70	0.00	1661370.45	3242862.79	39.646092	-104.637544
	12200.00	90.00	270.24	7840.00	3980.86	-518.31	-3959.70	0.00	1661369.90	3242762.79	39.646093	-104.637899
	12300.00	90.00	270.24	7840.00	4080.71	-517.90	-4059.70	0.00	1661369.35	3242662.79	39.646094	-104.638254
	12400.00	90.00	270.24	7840.00	4180.56	-517.48	-4159.70	0.00	1661368.80	3242562.80	39.646095	-104.638609
	12500.00	90.00	270.24	7840.00	4280.41	-517.07	-4259.70	0.00	1661368.25	3242462.80	39.646097	-104.638965
	12600.00	90.00	270.24	7840.00	4380.26	-516.65	-4359.70	0.00	1661367.70	3242362.80	39.646098	-104.639320
	12700.00	90.00	270.24	7840.00	4480.11	-516.24	-4459.70	0.00	1661367.15	3242262.81	39.646099	-104.639675
	12800.00	90.00	270.24	7840.00	4579.96	-515.82	-4559.70	0.00	1661366.60	3242162.81	39.646100	-104.640030
	12900.00	90.00	270.24	7840.00	4679.81	-515.41	-4659.70	0.00	1661366.05	3242062.82	39.646101	-104.640385
	13000.00	90.00	270.24	7840.00	4779.66	-514.99	-4759.70	0.00	1661365.50	3241962.82	39.646102	-104.640740
	13100.00	90.00	270.24	7840.00	4879.51	-514.58	-4859.70	0.00	1661364.95	3241862.82	39.646103	-104.641095
	13200.00	90.00	270.24	7840.00	4979.36	-514.16	-4959.70	0.00	1661364.40	3241762.83	39.646104	-104.641450
	13300.00	90.00	270.24	7840.00	5079.21	-513.75	-5059.69	0.00	1661363.85	3241662.83	39.646105	-104.641805
	13400.00	90.00	270.24	7840.00	5179.06	-513.33	-5159.69	0.00	1661363.30	3241562.83	39.646106	-104.642160
	13500.00	90.00	270.24	7840.00	5278.91	-512.92	-5259.69	0.00	1661362.75	3241462.84	39.646107	-104.642515
	13600.00	90.00	270.24	7840.00	5378.76	-512.50	-5359.69	0.00	1661362.21	3241362.84	39.646109	-104.642871
	13700.00	90.00	270.24	7840.00	5478.61	-512.09	-5459.69	0.00	1661361.66	3241262.84	39.646110	-104.643226
	13800.00	90.00	270.24	7840.00	5578.46	-511.67	-5559.69	0.00	1661361.11	3241162.85	39.646111	-104.643581
	13900.00	90.00	270.24	7840.00	5678.31	-511.26	-5659.69	0.00	1661360.56	3241062.85	39.646112	-104.643936
	14000.00	90.00	270.24	7840.00	5778.16	-510.84	-5759.69	0.00	1661360.01	3240962.85	39.646113	-104.644291
	14100.00	90.00	270.24	7840.00	5878.01	-510.43	-5859.69	0.00	1661359.46	3240862.86	39.646114	-104.644646
	14200.00	90.00	270.24	7840.00	5977.86	-510.01	-5959.69	0.00	1661358.91	3240762.86	39.646115	-104.645001
	14300.00	90.00	270.24	7840.00	6077.71	-509.60	-6059.69	0.00	1661358.36	3240662.87	39.646116	-104.645356
	14400.00	90.00	270.24	7840.00	6177.56	-509.18	-6159.69	0.00	1661357.81	3240562.87	39.646117	-104.645712
	14500.00	90.00	270.24	7840.00	6277.41	-508.77	-6259.68	0.00	1661357.26	3240462.87	39.646118	-104.646067
	14600.00	90.00	270.24	7840.00	6377.26	-508.35	-6359.68	0.00	1661356.71	3240362.88	39.646119	-104.646422
	14700.00	90.00	270.24	7840.00	6477.11	-507.94	-6459.68	0.00	1661356.16	3240262.88	39.646120	-104.646777
	14800.00	90.00	270.24	7840.00	6576.96	-507.52	-6559.68	0.00	1661355.61	3240162.88	39.646121	-104.647132

Comments	MD (ft)	Incl (°)	Azim True (°)	TVD (ft)	VSEC (ft)	NS (ft)	EW (ft)	DLS (°/100ft)	Northing (ftUS)	Easting (ftUS)	Latitude (°)	Longitude (°)
State Massive 5-65 2-3 2CH BHL	17993.99	90.00	270.24	7840.00	9766.16	-494.27	-9753.64	0.00	1661338.06	3236969.01	39.646155	-104.658474

Survey Type: Def Plan

Survey Error Model: ISCWSA Rev 0 *** 3-D 95.000% Confidence 2.7955 sigma
Survey Program:

Description	Part	MD From (ft)	MD To (ft)	EOU Freq (ft)	Hole Size (in)	Casing Diameter (in)	Expected Max Inclination (deg)	Survey Tool Type	Borehole / Survey
	1	0.000	28.000	1/100.000	13.500	9.625		NAL_MWD-NON_SLB-Depth Only	Original Hole / State Massive 5-65 2-3 2CH Plan #2
	1	28.000	2200.000	1/100.000	13.500	9.625		NAL_MWD-NON_SLB	Original Hole / State Massive 5-65 2-3 2CH Plan #2
	1	2200.000	17993.990	1/100.000	8.500	5.500		NAL_MWD_PLUS_0.5_DEG	Original Hole / State Massive 5-65 2-3 2CH Plan #2