

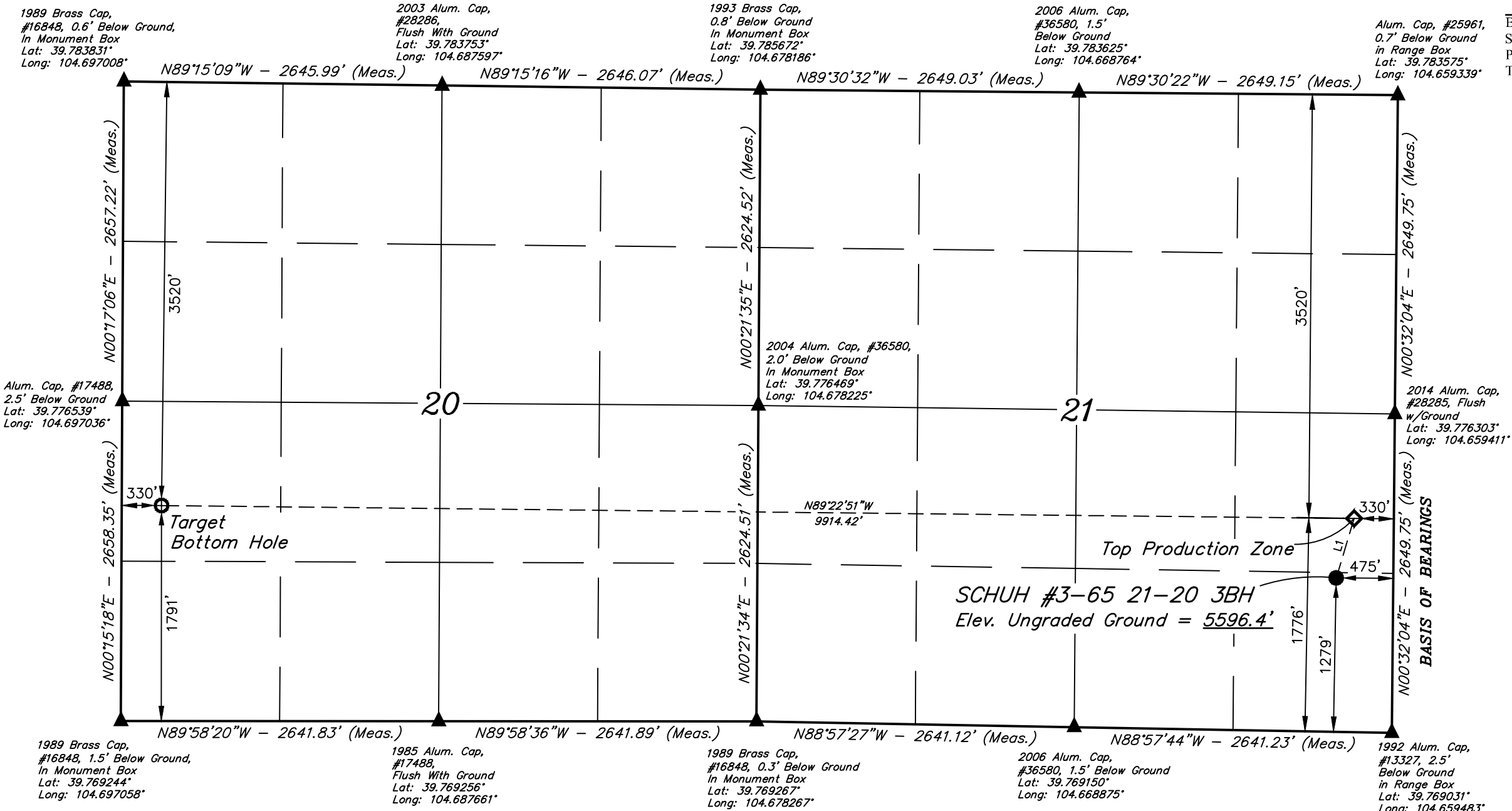
SCHUH #3-65 21-20 3BH  
SE 1/4 SE 1/4, SECTION 21, T3S, R65W, 6th P.M.  
ADAMS COUNTY, COLORADO

BASIS OF BEARINGS

BEARINGS ARE A BASED ASSUMPTION THAT THE EAST LINE OF THE SOUTHEAST 1/4 OF SECTION 21, T3S, R65W, BEARS N00°32'04"E. MONUMENTS DESCRIBED HEREON.

BASIS OF ELEVATION

BENCHMARK 374 LOCATED ON THE SECTION LINE BETWEEN SECTIONS 12 & 13, T5S, R64W, 6th. P.M., TAKEN FROM 1988 PUBLISHED DATUM BY THE UNITED STATES DEPARTMENT OF THE INTERIOR, GEOLOGICAL SURVEY AS BEING 6054.61 FEET.



LINE TABLE

LINE	DIRECTION	LENGTH
L1	N16°51'00"E	516.33'

CERTIFICATE

THIS IS TO CERTIFY THAT THE ABOVE PLAT WAS PREPARED FROM FIELD NOTES OF ACTUAL SURVEYS MADE BY ME OR UNDER MY SUPERVISION AND THAT THE SAME ARE TRUE AND ACCURATE TO THE BEST OF MY KNOWLEDGE AND BELIEF.

REGISTERED LAND SURVEYOR  
REGISTRATION NO. 28285  
STATE OF COLORADO

SECTION 21, T3S, R65W, 6th P.M.

PDOP = 1.2

REV: 3 02-26-20 S.F. (COMPANY & WELLBORE CHANGE)

LEGEND:

- = PROPOSED WELLHEAD.
- ◆ = TOP PRODUCTION ZONE.
- = TARGET BOTTOM HOLE.
- ▲ = SECTION CORNERS LOCATED. (NAD 83)

NOTE:

Distances referenced on plat to section lines are perpendicular.

NAD 83 (SURFACE LOCATION)	NAD 83 (TOP PRODUCTION ZONE)	NAD 83 (TARGET BOTTOM HOLE)
LATITUDE = 39°46'21.23" (39.772564)	LATITUDE = 39°46'26.11" (39.773920)	LATITUDE = 39°46'26.98" (39.774161)
LONGITUDE = 104°39'40.10" (104.661138)	LONGITUDE = 104°39'38.19" (104.660609)	LONGITUDE = 104°41'45.13" (104.695869)
NAD 27 (SURFACE LOCATION)	NAD 27 (TOP PRODUCTION ZONE)	NAD 27 (TARGET BOTTOM HOLE)
LATITUDE = 39°46'21.28" (39.772577)	LATITUDE = 39°46'26.16" (39.773934)	LATITUDE = 39°46'27.03" (39.774174)
LONGITUDE = 104°39'38.21" (104.660614)	LONGITUDE = 104°39'36.31" (104.660085)	LONGITUDE = 104°41'43.24" (104.695344)
STATE PLANE NAD 83 (CO. NORTH)	STATE PLANE NAD 83 (CO. NORTH)	STATE PLANE NAD 83 (CO. NORTH)
N: 1161113.66 E: 3235790.47	N: 1161609.33 E: 3235934.53	N: 1161605.09 E: 3226023.02
STATE PLANE NAD 27 (CO. NORTH)	STATE PLANE NAD 27 (CO. NORTH)	STATE PLANE NAD 27 (CO. NORTH)
N: 161116.96 E: 2235943.78	N: 161612.62 E: 2236087.83	N: 161608.25 E: 2226176.43



UELS, LLC  
Corporate Office \* 85 South 200 East  
Vernal, UT 84078 \* (435) 789-1017

SURVEYED BY	CHAD MEIERS	11-08-17	SCALE
DRAWN BY	J.J.	10-04-17	1" = 1000'

WELL LOCATION PLAT

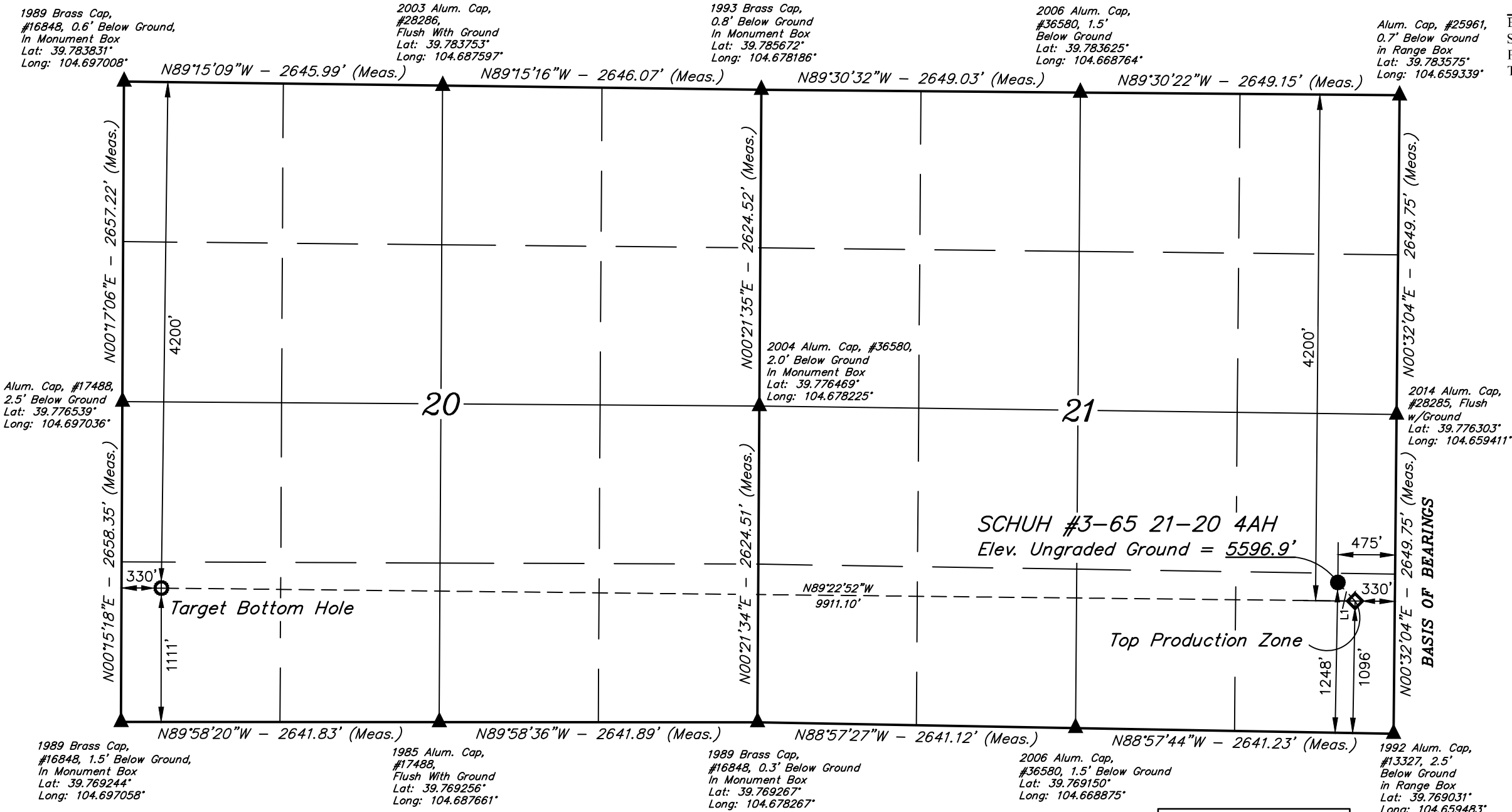
SCHUH #3-65 21-20 4AH  
SE 1/4 SE 1/4, SECTION 21, T3S, R65W, 6th P.M.  
ADAMS COUNTY, COLORADO

BASIS OF BEARINGS

BEARINGS ARE A BASED ASSUMPTION THAT THE EAST LINE OF THE SOUTHEAST 1/4 OF SECTION 21, T3S, R65W, BEARS N00°32'04"E. MONUMENTS DESCRIBED HEREON.

BASIS OF ELEVATION

BENCHMARK 374 LOCATED ON THE SECTION LINE BETWEEN SECTIONS 12 & 13, T5S, R64W, 6th. P.M., TAKEN FROM 1988 PUBLISHED DATUM BY THE UNITED STATES DEPARTMENT OF THE INTERIOR, GEOLOGICAL SURVEY AS BEING 6054.61 FEET.



LINE TABLE		
LINE	DIRECTION	LENGTH
L1	S43°02'14"E	210.44'

LINE TABLE		
LINE	DIRECTION	LENGTH
L1	S43°02'14"E	210.44'

PDOP = 1.2

CERTIFICATE

THIS IS TO CERTIFY THAT THE ABOVE PLAT WAS PREPARED FROM FIELD NOTES OF ACTUAL SURVEYS MADE BY ME OR UNDER MY SUPERVISION AND THAT THE SAME ARE TRUE AND ACCURATE TO THE BEST OF MY KNOWLEDGE AND BELIEF.

REGISTERED LAND SURVEYOR  
REGISTRATION NO. 28285  
STATE OF COLORADO

SECTION 21, T3S, R65W, 6th P.M.

REV: 3 02-26-20 S.F. (COMPANY & WELLBORE CHANGE)



UELS, LLC  
Corporate Office \* 85 South 200 East  
Vernal, UT 84078 \* (435) 789-1017

SURVEYED BY	CHAD MEIERS	11-08-17	SCALE
DRAWN BY	J.J.	10-04-17	1" = 1000'

WELL LOCATION PLAT

LEGEND:

- = PROPOSED WELLHEAD.
- ◆ = TOP PRODUCTION ZONE.
- = TARGET BOTTOM HOLE.
- ▲ = SECTION CORNERS LOCATED. (NAD 83)

NOTE:

Distances referenced on plat to section lines are perpendicular.

NAD 83 (SURFACE LOCATION)	NAD 83 (TOP PRODUCTION ZONE)	NAD 83 (TARGET BOTTOM HOLE)
LATITUDE = 39°46'20.91" (39.772476)	LATITUDE = 39°46'19.40" (39.772054)	LATITUDE = 39°46'20.26" (39.772295)
LONGITUDE = 104°39'40.10" (104.661139)	LONGITUDE = 104°39'38.26" (104.660627)	LONGITUDE = 104°41'45.15" (104.695875)
NAD 27 (SURFACE LOCATION)	NAD 27 (TOP PRODUCTION ZONE)	NAD 27 (TARGET BOTTOM HOLE)
LATITUDE = 39°46'20.96" (39.772489)	LATITUDE = 39°46'19.44" (39.772068)	LATITUDE = 39°46'20.31" (39.772308)
LONGITUDE = 104°39'38.21" (104.660615)	LONGITUDE = 104°39'36.37" (104.660103)	LONGITUDE = 104°41'43.26" (104.695350)
STATE PLANE NAD 83 (CO. NORTH)	STATE PLANE NAD 83 (CO. NORTH)	STATE PLANE NAD 83 (CO. NORTH)
N: 1161081.67 E: 3235790.53	N: 1160929.53 E: 3235935.82	N: 1160925.28 E: 3226027.63
STATE PLANE NAD 27 (CO. NORTH)	STATE PLANE NAD 27 (CO. NORTH)	STATE PLANE NAD 27 (CO. NORTH)
N: 161084.97 E: 2235943.84	N: 160932.82 E: 2236089.14	N: 160928.44 E: 2226181.04

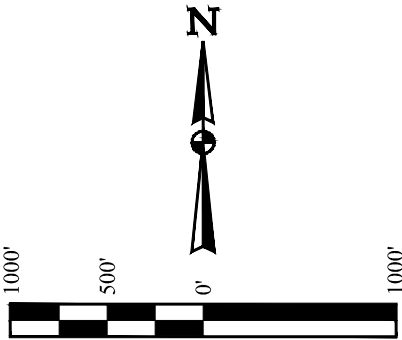
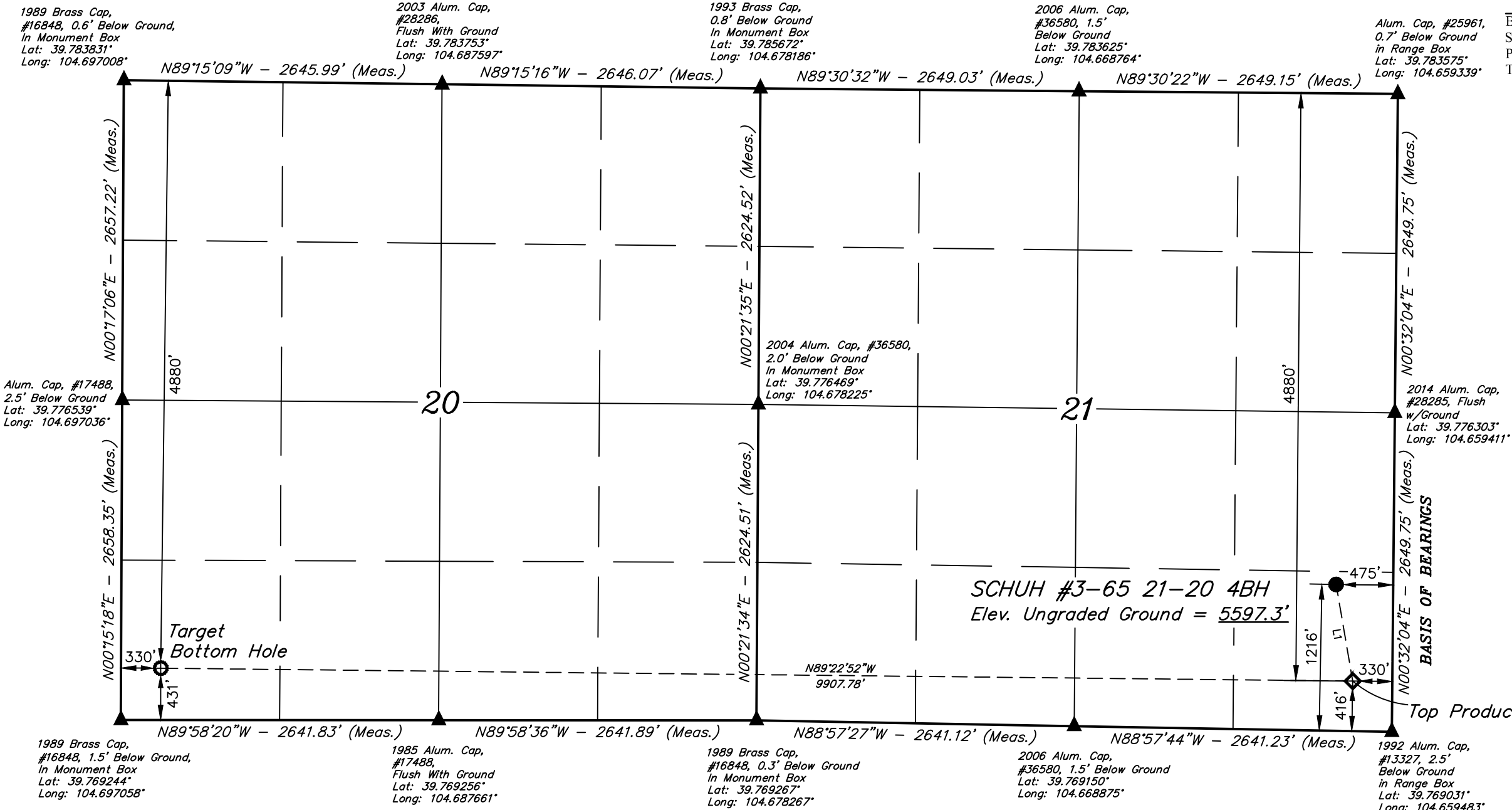
SCHUH #3-65 21-20 4BH  
SE 1/4 SE 1/4, SECTION 21, T3S, R65W, 6th P.M.  
ADAMS COUNTY, COLORADO

BASIS OF BEARINGS

BEARINGS ARE A BASED ASSUMPTION THAT THE EAST LINE OF THE SOUTHEAST 1/4 OF SECTION 21, T3S, R65W, BEARS N00°32'04"E. MONUMENTS DESCRIBED HEREON.

BASIS OF ELEVATION

BENCHMARK 374 LOCATED ON THE SECTION LINE BETWEEN SECTIONS 12 & 13, T5S, R64W, 6th. P.M., TAKEN FROM 1988 PUBLISHED DATUM BY THE UNITED STATES DEPARTMENT OF THE INTERIOR, GEOLOGICAL SURVEY AS BEING 6054.61 FEET.



LINE TABLE		
LINE	DIRECTION	LENGTH
L1	S09°44'10"E	813.50'

CERTIFICATE

THIS IS TO CERTIFY THAT THE ABOVE PLAT WAS PREPARED FROM FIELD NOTES OF ACTUAL SURVEYS MADE BY ME OR UNDER MY SUPERVISION AND THAT THE SAME ARE TRUE AND ACCURATE TO THE BEST OF MY KNOWLEDGE AND BELIEF.

CHAD MEIERS  
REGISTERED LAND SURVEYOR  
REGISTRATION NO. 28285  
STATE OF COLORADO

21-20

LEGEND:

- = PROPOSED WELLHEAD.
- ◆ = TOP PRODUCTION ZONE.
- = TARGET BOTTOM HOLE.
- ▲ = SECTION CORNERS LOCATED. (NAD 83)

NOTE:  
Distances referenced on plat to section lines are perpendicular.

PDOP = 1.2

NAD 83 (SURFACE LOCATION)	NAD 83 (TOP PRODUCTION ZONE)	NAD 83 (TARGET BOTTOM HOLE)
LATITUDE = 39°46'20.60" (39.772388)	LATITUDE = 39°46'12.68" (39.770188)	LATITUDE = 39°46'13.54" (39.770428)
LONGITUDE = 104°39'40.10" (104.661140)	LONGITUDE = 104°39'38.32" (104.660645)	LONGITUDE = 104°41'45.17" (104.695880)
NAD 27 (SURFACE LOCATION)	NAD 27 (TOP PRODUCTION ZONE)	NAD 27 (TARGET BOTTOM HOLE)
LATITUDE = 39°46'20.64" (39.772401)	LATITUDE = 39°46'12.73" (39.770201)	LATITUDE = 39°46'13.59" (39.770441)
LONGITUDE = 104°39'38.22" (104.660616)	LONGITUDE = 104°39'36.44" (104.660122)	LONGITUDE = 104°41'43.28" (104.695355)
STATE PLANE NAD 83 (CO. NORTH)	STATE PLANE NAD 83 (CO. NORTH)	STATE PLANE NAD 83 (CO. NORTH)
N: 1161049.68 E: 3235790.59	N: 1160249.72 E: 3235937.12	N: 1160245.47 E: 3226032.24
STATE PLANE NAD 27 (CO. NORTH)	STATE PLANE NAD 27 (CO. NORTH)	STATE PLANE NAD 27 (CO. NORTH)
N: 161052.98 E: 2235943.91	N: 160253.03 E: 2236090.45	N: 160248.64 E: 2226185.66

REV: 3 02-26-20 S.F. (COMPANY & WELLBORE CHANGE)



UELS, LLC  
Corporate Office \* 85 South 200 East  
Vernal, UT 84078 \* (435) 789-1017

SURVEYED BY	CHAD MEIERS	11-08-17	SCALE
DRAWN BY	J.J.	10-04-17	1" = 1000'

WELL LOCATION PLAT

T3S, R65W, 6th P.M.

CRESTONE PEAK RESOURCES OPERATING LLC

SCHUH #3-65 21-20 3AH, 3BH, 4AH & 4BH  
SE 1/4 SE 1/4, SECTION 21, T3S, R65W, 6th P.M.  
ADAMS COUNTY, COLORADO

BASIS OF BEARINGS

BEARINGS ARE A BASED ASSUMPTION THAT THE EAST LINE OF THE SOUTHEAST 1/4 OF SECTION 21, T3S, R65W, BEARS N00°32'04"E. MONUMENTS DESCRIBED HEREON.

BASIS OF ELEVATION

BENCHMARK 374 LOCATED ON THE SECTION LINE BETWEEN SECTIONS 12 & 13, T5S, R64W, 6th. P.M., TAKEN FROM 1988 PUBLISHED DATUM BY THE UNITED STATES DEPARTMENT OF THE INTERIOR, GEOLOGICAL SURVEY AS BEING 6054.61 FEET.

1989 Brass Cap,  
#16848, 0.6' Below Ground,  
In Monument Box  
Lat: 39.783831°  
Long: 104.697008°

2003 Alum. Cap,  
#28286,  
Flush With Ground  
Lat: 39.783753°  
Long: 104.687597°

1993 Brass Cap,  
0.8' Below Ground  
In Monument Box  
Lat: 39.785672°  
Long: 104.678186°

2006 Alum. Cap,  
#36580, 1.5'  
Below Ground  
Lat: 39.783625°  
Long: 104.668764°

Alum. Cap, #25961,  
0.7' Below Ground  
in Range Box  
Lat: 39.783575°  
Long: 104.659339°

Alum. Cap, #17488,  
2.5' Below Ground  
Lat: 39.776539°  
Long: 104.697036°

2014 Alum. Cap,  
#28285, Flush  
w/Ground  
Lat: 39.776303°  
Long: 104.659411°

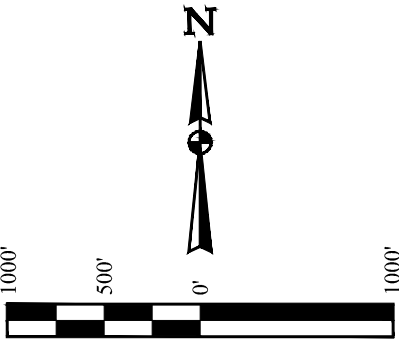
1989 Brass Cap,  
#16848, 1.5'  
Below Ground, In  
Monument Box  
Lat: 39.769244°  
Long: 104.697058°

1985 Alum. Cap,  
#17488,  
Flush With Ground  
Lat: 39.769256°  
Long: 104.687661°

1989 Brass Cap,  
#16848, 0.3' Below Ground  
In Monument Box  
Lat: 39.769267°  
Long: 104.678267°

2006 Alum. Cap,  
#36580, 1.5' Below Ground  
Lat: 39.769150°  
Long: 104.668875°

1992 Alum. Cap,  
#13327, 2.5'  
Below Ground  
in Range Box  
Lat: 39.769031°  
Long: 104.659483°



LINE TABLE		
LINE	DIRECTION	LENGTH
L1	N07°53'27"E	1132.86'
L2	N16°51'00"E	516.33'
L3	S43°02'14"E	210.44'
L4	S09°44'10"E	813.50'

CERTIFICATE

THIS IS TO CERTIFY THAT THE ABOVE MAP WAS PREPARED FROM FIELD NOTES OF ACTUAL SURVEYS MADE BY ME OR UNDER MY SUPERVISION AND THAT THE SAME ARE TRUE AND ACCURATE TO THE BEST OF MY KNOWLEDGE AND BELIEF.

REGISTERED LAND SURVEYOR  
REGISTRATION NO. 28285  
STATE OF COLORADO  
21-20

REV: 3 02-26-20 S.F. (COMPANY & WELLBORE CHANGES)

LEGEND:

- = PROPOSED WELLHEAD.
- ◆ = TOP PRODUCTION ZONE.
- = TARGET BOTTOM HOLE.
- ▲ = SECTION CORNERS LOCATED. (NAD 83)

WELL	SURFACE LOCATION	TOP PRODUCTION ZONE	TARGET BOTTOM HOLE
3AH	*1 1311' FSL 475' FEL	*2 2860' FNL 330' FEL	*3 2860' FNL 358' FWL
3BH	*4 1279' FSL 475' FEL	*5 3520' FNL 330' FEL	*6 3520' FNL 330' FWL
4AH	*7 1248' FSL 475' FEL	*8 4200' FNL 330' FEL	*9 4200' FNL 330' FWL
4BH	*10 1216' FSL 475' FEL	*11 4880' FNL 330' FEL	*12 4880' FNL 330' FWL

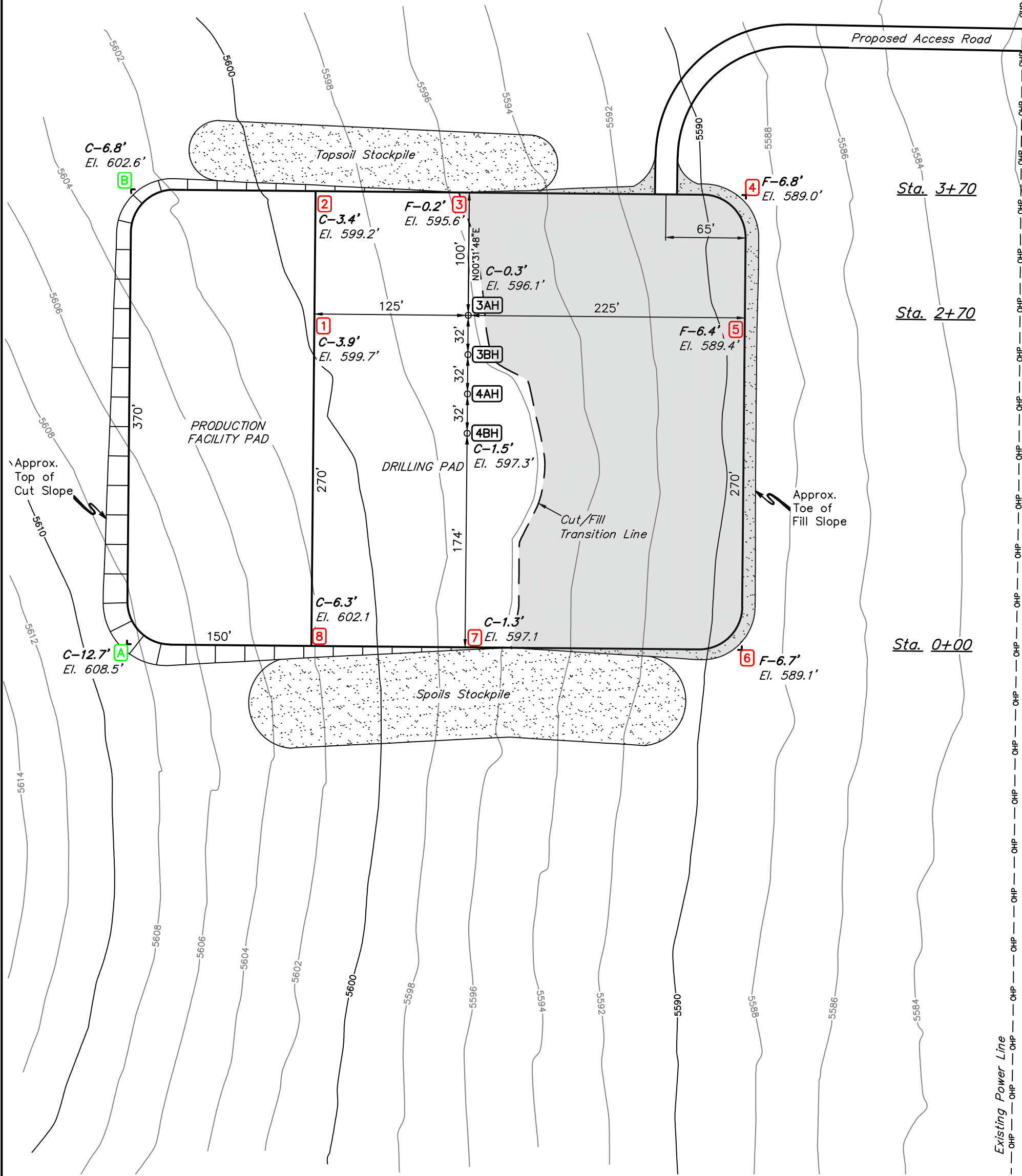
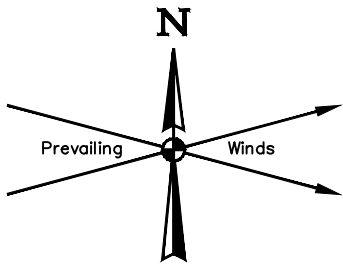


UELS, LLC  
Corporate Office \* 85 South 200 East  
Vernal, UT 84078 \* (435) 789-1017

SURVEYED BY	CHAD MEIERS	11-08-17	SCALE
DRAWN BY	J.J.	10-04-17	1" = 1000'

SECTION BREAKDOWN





FINISHED GRADE ELEVATION = 5595.8'

REV: 3 02-26-20 S.F. (COMPANY & WELL NAME CHANGES)

- NOTES:**
- Round corners at 35' radius or as needed.
  - Contours shown at 2' intervals.
  - Cut/Fill slopes 1 1/2:1 (Typ.)

**CRESTONE PEAK RESOURCES OPERATING LLC**

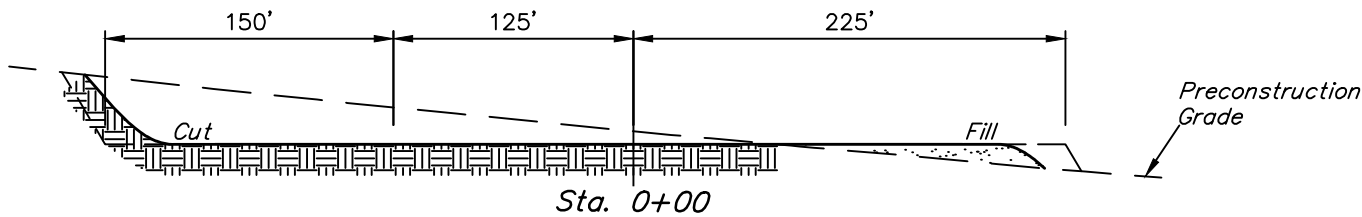
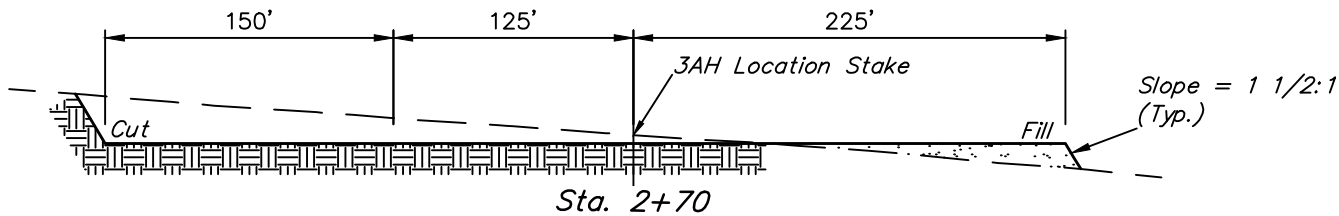
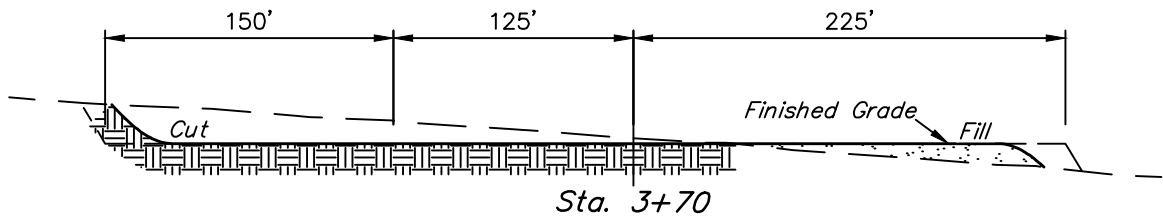
SCHUH #3-65 21-20 3AH, 3BH, 4AH & 4BH  
SE 1/4 SE 1/4, SECTION 21, T3S, R65W, 6th P.M.  
ADAMS COUNTY, COLORADO



**UELS, LLC**  
Corporate Office \* 85 South 200 East  
Vernal, UT 84078 \* (435) 789-1017

SURVEYED BY	CHAD MEIERS	11-08-17	SCALE
DRAWN BY	J.J.	10-04-17	1" = 80'
CONSTRUCTION LAYOUT		FIGURE #1	

1" = 40'  
X-Section  
Scale  
1" = 100'



APPROXIMATE EARTHWORK QUANTITIES	
(6") TOPSOIL STRIPPING	3,700 Cu. Yds.
REMAINING LOCATION	19,490 Cu. Yds.
<b>TOTAL CUT</b>	<b>23,190 Cu. Yds.</b>
<b>FILL</b>	<b>11,390 Cu. Yds.</b>
EXCESS MATERIAL	11,800 Cu. Yds.
TOPSOIL	3,700 Cu. Yds.
<b>EXCESS UNBALANCE</b> (After Interim Rehabilitation)	<b>8,100 Cu. Yds.</b>

APPROXIMATE SURFACE DISTURBANCE AREAS		
	DISTANCE	ACRES
WELL SITE DISTURBANCE	NA	±5.474
60' WIDE ACCESS ROAD R-O-W DISTURBANCE	±401'	±0.552
TOTAL SURFACE USE AREA		±6.026

REV: 3 02-26-20 S.F. (COMPANY & WELL NAME CHANGES)

- NOTES:**
- Fill quantity includes 10% for compaction.
  - Calculations based on 6" of topsoil stripping.
  - Cut/Fill slopes 1 1/2:1 (Typ.)

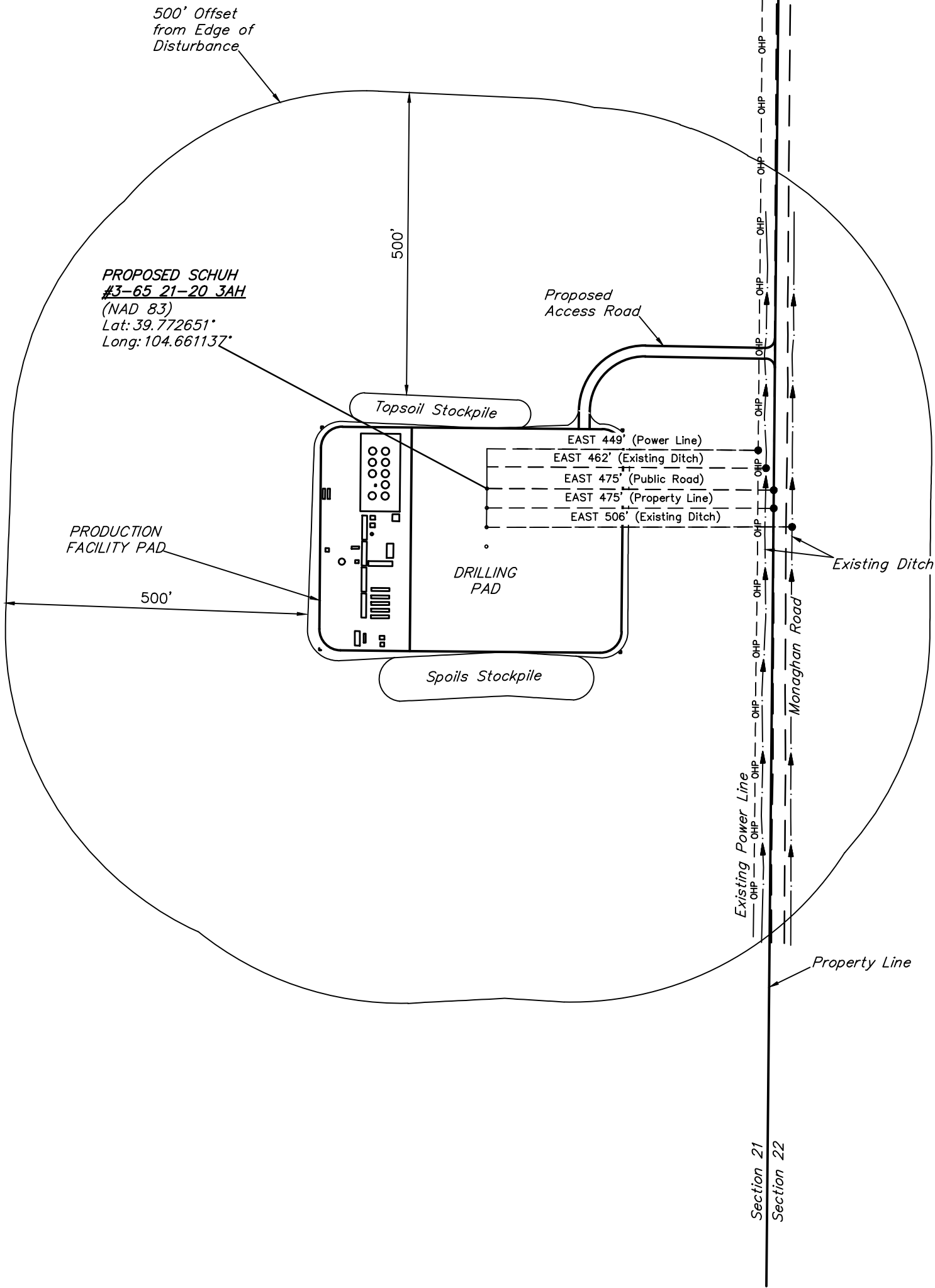
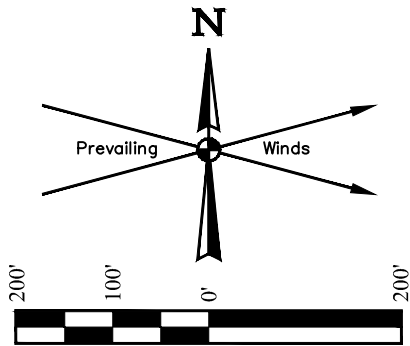
**CRESTONE PEAK RESOURCES OPERATING LLC**

**SCHUH #3-65 21-20 3AH, 3BH, 4AH & 4BH  
SE 1/4 SE 1/4, SECTION 21, T3S, R65W, 6th P.M.  
ADAMS COUNTY, COLORADO**



**UELS, LLC**  
Corporate Office \* 85 South 200 East  
Vernal, UT 84078 \* (435) 789-1017

SURVEYED BY	CHAD MEIERS	11-08-17	SCALE
DRAWN BY	J.J.	10-04-17	AS SHOWN
CONSTRUCTION LAYOUT CROSS SECTIONS			<b>FIGURE #2</b>



REV: 6 02-26-20 S.F. (COMPANY & WELL NAME CHANGES)

PLANT COMMUNITY		CURRENT LAND USE					
<input type="checkbox"/> DISTURBED GRASSLAND		CROP LAND:	<input type="checkbox"/> IRRIGATED	<input checked="" type="checkbox"/> DRY LAND	<input type="checkbox"/> IMPROVED PASTURE	<input type="checkbox"/> HAY MEADOW	<input type="checkbox"/> CRP
<input type="checkbox"/> NATIVE GRASSLAND		NON-CROP LAND:	<input type="checkbox"/> RANGELAND	<input type="checkbox"/> TIMBER	<input type="checkbox"/> RECREATIONAL	<input type="checkbox"/> OTHER (Describe)	
<input type="checkbox"/> SHRUB LAND		SUBDIVIDED:	<input type="checkbox"/> INDUSTRIAL	<input type="checkbox"/> COMMERCIAL	<input type="checkbox"/> RESIDENTIAL		
<input type="checkbox"/> PLAINS RIPARIAN							
<input type="checkbox"/> MOUNTAIN RIPARIAN							
<input type="checkbox"/> FOREST LAND							
<input type="checkbox"/> WETLANDS AQUATIC							
<input type="checkbox"/> ALPINE							
<input checked="" type="checkbox"/> OTHER (Describe): WHEAT STUBBLE							
		FUTURE LAND USE					
		CROP LAND:	<input type="checkbox"/> IRRIGATED	<input checked="" type="checkbox"/> DRY LAND	<input type="checkbox"/> IMPROVED PASTURE	<input type="checkbox"/> HAY MEADOW	<input type="checkbox"/> CRP
		NON-CROP LAND:	<input type="checkbox"/> RANGELAND	<input type="checkbox"/> TIMBER	<input type="checkbox"/> RECREATIONAL	<input type="checkbox"/> OTHER (Describe)	
		SUBDIVIDED:	<input type="checkbox"/> INDUSTRIAL	<input type="checkbox"/> COMMERCIAL	<input type="checkbox"/> RESIDENTIAL		

NOTES:

CRESTONE PEAK RESOURCES OPERATING LLC

SCHUH #3-65 21-20 3AH, 3BH, 4AH & 4BH  
SE 1/4 SE 1/4, SECTION 21, T3S, R65W, 6th P.M.  
ADAMS COUNTY, COLORADO



UELS, LLC  
Corporate Office \* 85 South 200 East  
Vernal, UT 84078 \* (435) 789-1017

SURVEYED BY	CHAD MEIERS	11-08-17	SCALE
DRAWN BY	J.J.	10-04-17	1" = 200'
LOCATION DRAWING		FIGURE #3	

N

LEGEND:

SL = SURFACE LOCATION.

TPZ = TOP PRODUCTION ZONE.

TBH = TARGET BOTTOM HOLE.

●

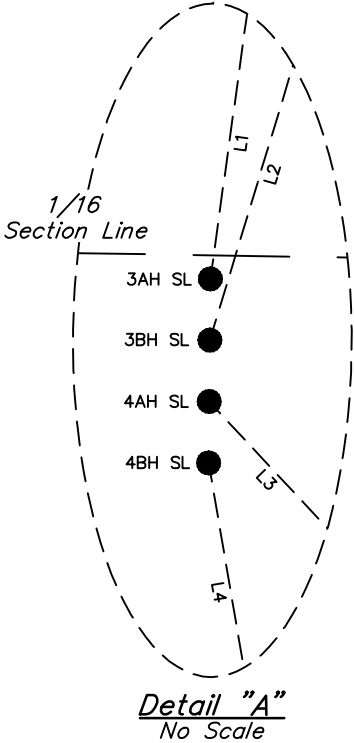
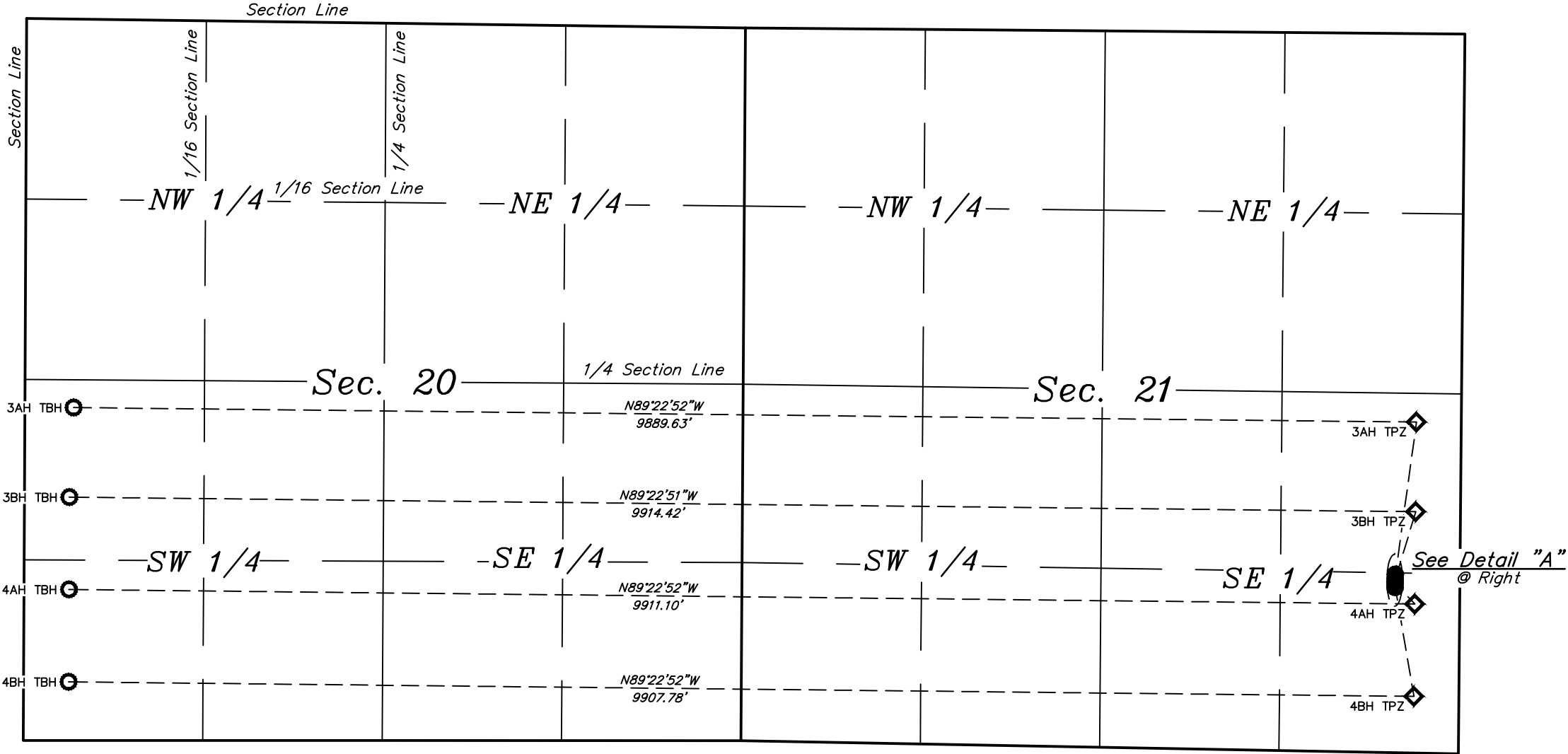
 = SURFACE LOCATION.

◆

 = TOP PRODUCTION ZONE.

○

 = TARGET BOTTOM HOLE.



LINE TABLE		
LINE	DIRECTION	LENGTH
L1	N07°53'27"E	1132.86'
L2	N16°51'00"E	516.33'
L3	S43°02'14"E	210.44'
L4	S09°44'10"E	813.50'

REV: 3 02-26-20 S.F. (COMPANY & WELLBORE CHANGE)

CRESTONE PEAK RESOURCES OPERATING LLC

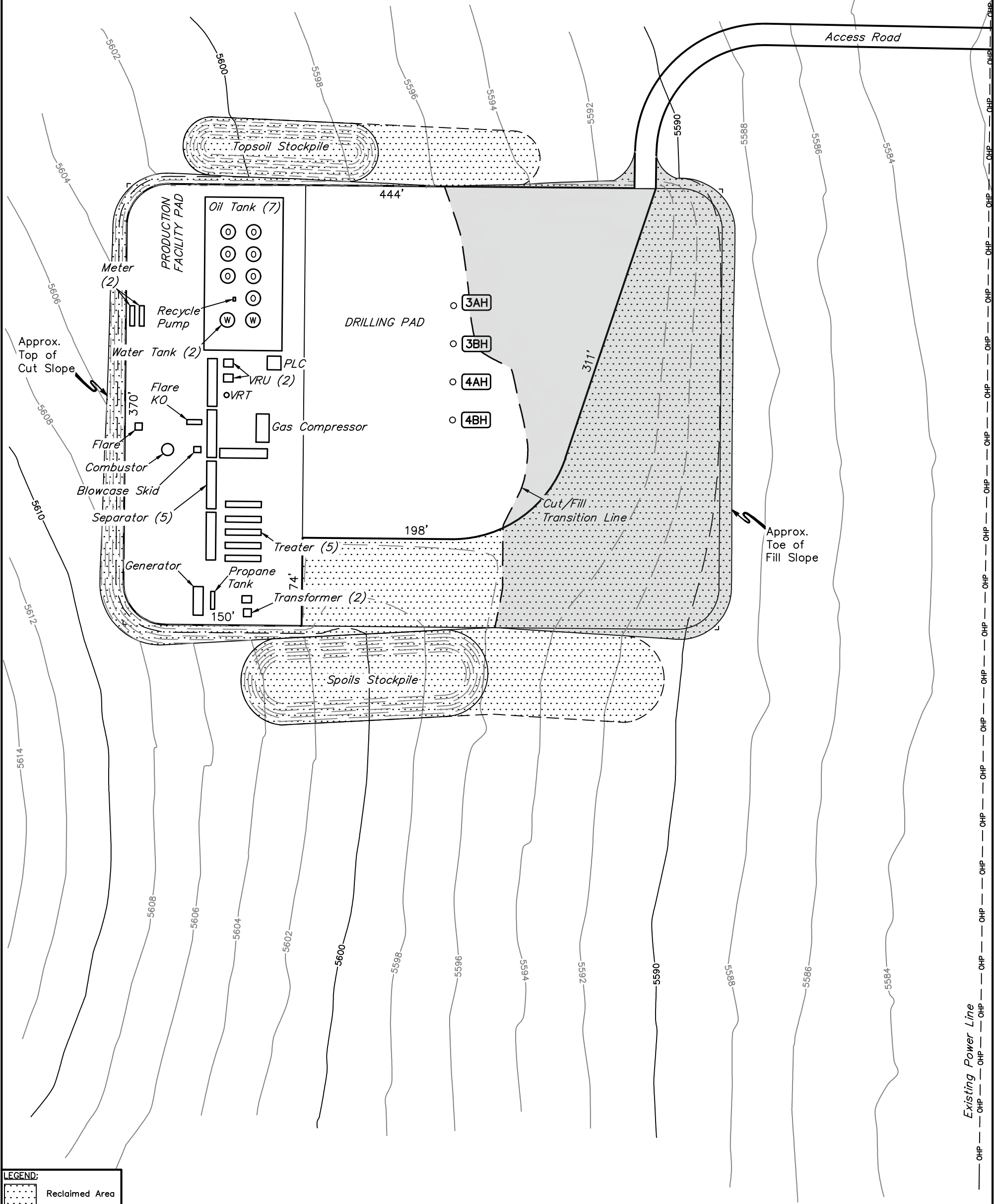
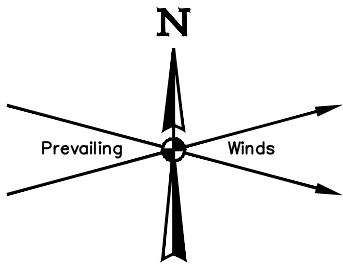
SCHUH #3-65 21-20 3AH, 3BH, 4AH & 4BH  
SE 1/4 SE 1/4, SECTION 21, T3S, R65W, 6th P.M.  
ADAMS COUNTY, COLORADO

SURVEYED BY	CHAD MEIERS	11-08-17	SCALE
DRAWN BY	J.J.	10-04-17	1" = 1000'
MULTI-WELL PLAN			FIGURE #4



UELS, LLC  
Corporate Office \* 85 South 200 East  
Vernal, UT 84078 \* (435) 789-1017





LEGEND:  
Reclaimed Area

APPROXIMATE UN-RECLAIMED ACREAGE = ±2.910 ACRES  
APPROXIMATE RECLAIMED ACREAGE = ±2.564 ACRES  
TOTAL ACREAGE = ±5.474 ACRES

NOTES:  
• Contours shown at 2' intervals.

REV: 3 02-26-20 S.F. (COMPANY & WELL NAME CHANGES)

CRESTONE PEAK RESOURCES OPERATING LLC

SCHUH #3-65 21-20 3AH, 3BH, 4AH & 4BH  
SE 1/4 SE 1/4, SECTION 21, T3S, R65W, 6th P.M.  
ADAMS COUNTY, COLORADO

SURVEYED BY	CHAD MEIERS	11-08-17	SCALE
DRAWN BY	J.J.	10-04-17	1" = 80'
INTERIM RECLAMATION PLAN			FIGURE #5



UELS, LLC  
Corporate Office \* 85 South 200 East  
Vernal, UT 84078 \* (435) 789-1017