



Crestone Peak Resources

Schlumberger

Plan 0

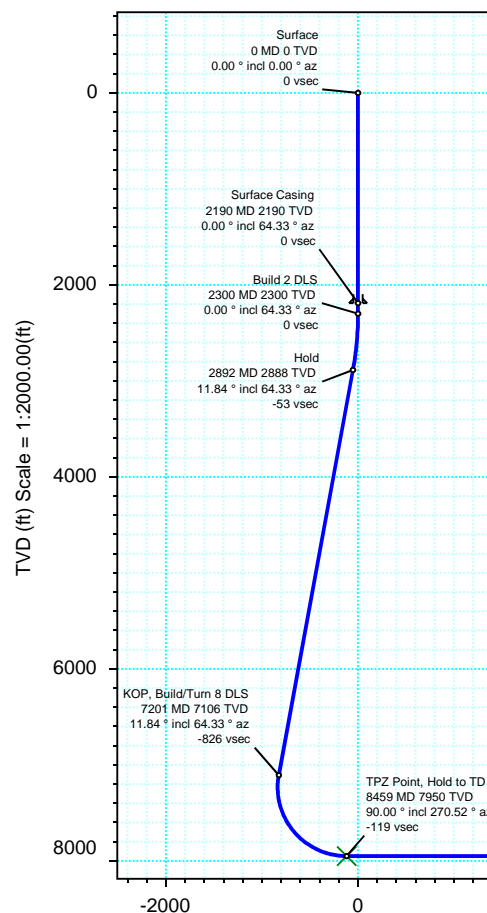
Borehole:	Well:	Field:	Structure:
Original Hole	Schuh 3-65 21-20 3BH	CO, Adams County (NAD 83 NZ)	Crestone Peak 21-03S-65W (Shuh Pad)

Gravity & Magnetic Parameters					Surface Location					NAD83 Colorado State Plane, Northern Zone, US Feet					Miscellaneous			
Model:	HDGM 2019	Dip:	66.278°	Date:	03-Mar-2020	Lat:	N 39 46 21.23	Northing:	1161113.83ftUS	Grid Conv:	0.542°	Slot:	Schuh 3-65 21-20 3BH	TVD Ref:	KB 28ft(5624.3ft above MSL)			
MagDec:	8.488°	FS:	51573.825nT	Gravity FS:	998.92mgn (9.80665 Based)	Lon:	W 104 39 40.10	Easting:	3235790.43ftUS	Scale Fact:	0.99999145	Plan:	Schuh 3-65 21-20 3BH Plan #0					

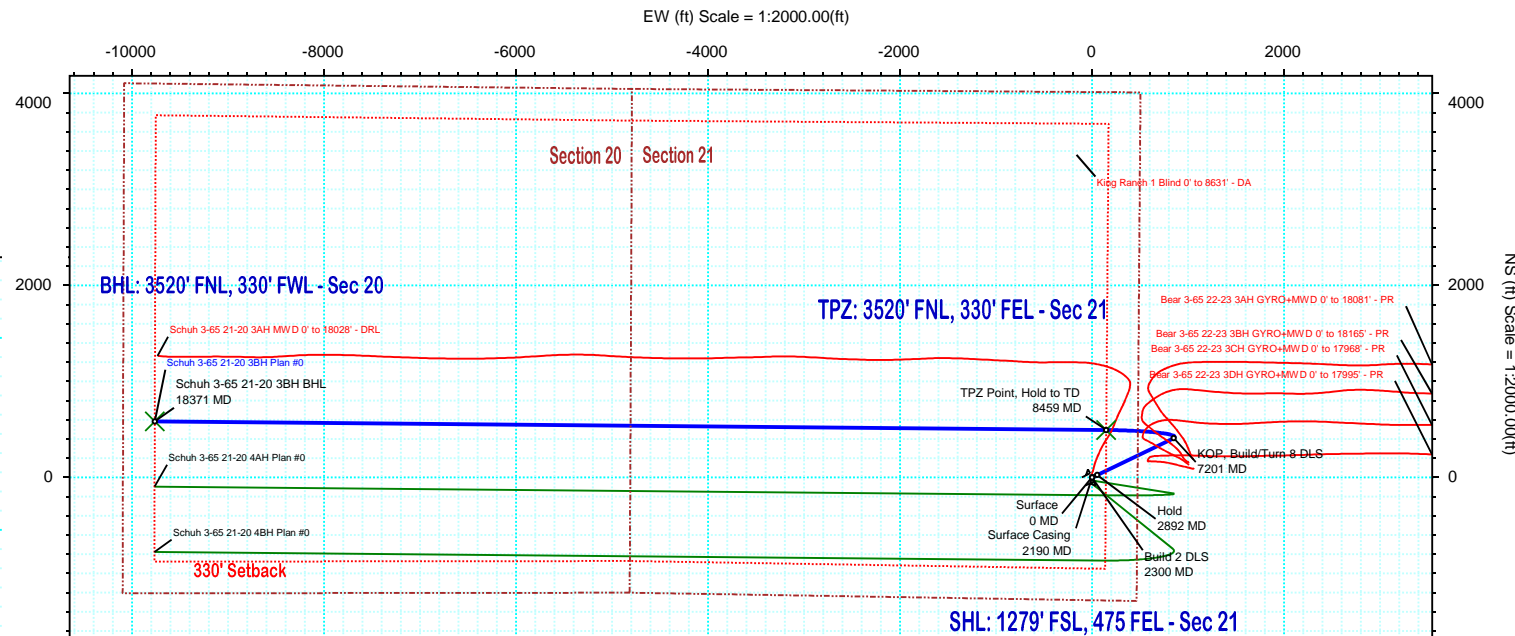
Proposal



True North
Tot Corr (M->T 8.488°)
Mag Dec (8.488°)
Grid Conv (0.542°)



Vertical Section (ft) Azim = 273.42° Scale = 1:2000.00(ft) Origin = 0N/-S, 0E/-W



Surface Location								
Northing: 1161113.83022154			Easting: 3235790.42733238			Latitude: N 39 46 21.23		
Longitude: W 104 39 40.10			VSec Azimuth: 273.42					
Target Description		Grid Coord		Local Coord				
Target Name		Latitude	Longitude	Northing	Easting	TVD	VSec	N(+)/S(-)
Schuh Pad Sec 21-20		N 39 46 21.23	W 104 39 40.10	1161113.83	3235790.43	5624.30	0.00	0.00
Schuh Pad Sec 21-20 - 330' SB		N 39 46 21.23	W 104 39 40.10	1161113.83	3235790.43	5624.30	0.00	0.00
Schuh 3-65 21-20 3BH TPZ		N 39 46 26.11	W 104 39 38.19	1161609.16	3235934.44	7950.00	-118.95	493.95
Schuh 3-65 21-20 3BH BHL		N 39 46 26.98	W 104 41 45.13	1161605.10	3226023.11	7950.00	9779.77	583.66

Critical Points								
Critical Point	MD	INCL	AZIM	TVD	VSEC	N(+)/S(-)	E(+)/W(-)	DLS
Surface	0.00	0.00	0.00	0.00	0.00	0.00	0.00	
Surface Casing	2190.00	0.00	64.33	2190.00	0.00	0.00	0.00	0.00
Build 2 DLS	2300.00	0.00	64.33	2300.00	0.00	0.00	0.00	0.00
Hold	2892.03	11.84	64.33	2887.82	-53.27	26.41	54.94	2.00
KOP, Build/Turn 8 DLS	7201.44	11.84	64.33	7105.54	-825.96	409.45	851.91	0.00
TPZ Point, Hold to TD	8459.07	90.00	270.52	7950.00	-118.95	493.95	148.69	8.00
Schuh 3-65 21-20 3BH BHL	18370.50	90.00	270.52	7950.00	9779.77	583.66	-9762.34	0.00

Schuh 3-65 21-20 3BH Plan #0 Proposal Geodetic Report

(Def Plan)

Report Date: March 03, 2020 - 11:55 AM
Client: Crestone Peak Resources
Field: CO, Adams County (NAD 83 NZ)
Structure / Slot: Crestone Peak 21-03S-65W (Shuh Pad) / Schuh 3-65 21-20 3BH
Well: Schuh 3-65 21-20 3BH
Borehole: Original Hole
UWI / API#: Unknown / Unknown
Survey Name: Schuh 3-65 21-20 3BH Plan #0
Survey Date: March 03, 2020
Tort / AHD / DDI / ERD Ratio: 112.451 ° / 11600.852 ft / 6.479 / 1.459
Coordinate Reference System: NAD83 Colorado State Plane, Northern Zone, US Feet
Location Lat / Long: N 39° 46' 21.23040", W 104° 39' 40.09680"
Location Grid N/E Y/X: N 1161113.830 ftUS, E 3235790.427 ftUS
CRS Grid Convergence Angle: 0.5420 °
Grid Scale Factor: 0.99999145
Version / Patch: 2.10.787.0

Survey / DLS Computation: Minimum Curvature / Lubinski
Vertical Section Azimuth: 273.421 ° (True North)
Vertical Section Origin: 0.000 ft, 0.000 ft
TVD Reference Datum: KB 28ft
TVD Reference Elevation: 5624.300 ft above MSL
Seabed / Ground Elevation: 5596.300 ft above MSL
Magnetic Declination: 8.488 °
Total Gravity Field Strength: 998.9200mgn (9.80665 Based)
Gravity Model: GARM
Total Magnetic Field Strength: 51573.825 nT
Magnetic Dip Angle: 66.278 °
Declination Date: March 03, 2020
Magnetic Declination Model: HDGM 2019
North Reference: True North
Grid Convergence Used: 0.0000 °
Total Corr Mag North→True North: 8.4875 °
Local Coord Referenced To: Well Head

Comments	MD (ft)	Incl (°)	Azim True (°)	TVD (ft)	VSEC (ft)	NS (ft)	EW (ft)	DLS (°/100ft)	Northing (ftUS)	Easting (ftUS)	Latitude (°)	Longitude (°)
Surface	0.00	0.00	0.00	0.00	0.00	0.00	0.00	N/A	1161113.83	3235790.43	39.772564	-104.661138
	100.00	0.00	64.33	100.00	0.00	0.00	0.00	0.00	1161113.83	3235790.43	39.772564	-104.661138
	200.00	0.00	64.33	200.00	0.00	0.00	0.00	0.00	1161113.83	3235790.43	39.772564	-104.661138
	300.00	0.00	64.33	300.00	0.00	0.00	0.00	0.00	1161113.83	3235790.43	39.772564	-104.661138
	400.00	0.00	64.33	400.00	0.00	0.00	0.00	0.00	1161113.83	3235790.43	39.772564	-104.661138
	500.00	0.00	64.33	500.00	0.00	0.00	0.00	0.00	1161113.83	3235790.43	39.772564	-104.661138
	600.00	0.00	64.33	600.00	0.00	0.00	0.00	0.00	1161113.83	3235790.43	39.772564	-104.661138
	700.00	0.00	64.33	700.00	0.00	0.00	0.00	0.00	1161113.83	3235790.43	39.772564	-104.661138
	800.00	0.00	64.33	800.00	0.00	0.00	0.00	0.00	1161113.83	3235790.43	39.772564	-104.661138
	900.00	0.00	64.33	900.00	0.00	0.00	0.00	0.00	1161113.83	3235790.43	39.772564	-104.661138
	1000.00	0.00	64.33	1000.00	0.00	0.00	0.00	0.00	1161113.83	3235790.43	39.772564	-104.661138
	1100.00	0.00	64.33	1100.00	0.00	0.00	0.00	0.00	1161113.83	3235790.43	39.772564	-104.661138
	1200.00	0.00	64.33	1200.00	0.00	0.00	0.00	0.00	1161113.83	3235790.43	39.772564	-104.661138
	1300.00	0.00	64.33	1300.00	0.00	0.00	0.00	0.00	1161113.83	3235790.43	39.772564	-104.661138
	1400.00	0.00	64.33	1400.00	0.00	0.00	0.00	0.00	1161113.83	3235790.43	39.772564	-104.661138
	1500.00	0.00	64.33	1500.00	0.00	0.00	0.00	0.00	1161113.83	3235790.43	39.772564	-104.661138
	1600.00	0.00	64.33	1600.00	0.00	0.00	0.00	0.00	1161113.83	3235790.43	39.772564	-104.661138
	1700.00	0.00	64.33	1700.00	0.00	0.00	0.00	0.00	1161113.83	3235790.43	39.772564	-104.661138
	1800.00	0.00	64.33	1800.00	0.00	0.00	0.00	0.00	1161113.83	3235790.43	39.772564	-104.661138
	1900.00	0.00	64.33	1900.00	0.00	0.00	0.00	0.00	1161113.83	3235790.43	39.772564	-104.661138
Surface Casing	2000.00	0.00	64.33	2000.00	0.00	0.00	0.00	0.00	1161113.83	3235790.43	39.772564	-104.661138
	2100.00	0.00	64.33	2100.00	0.00	0.00	0.00	0.00	1161113.83	3235790.43	39.772564	-104.661138
	2190.00	0.00	64.33	2190.00	0.00	0.00	0.00	0.00	1161113.83	3235790.43	39.772564	-104.661138
	2200.00	0.00	64.33	2200.00	0.00	0.00	0.00	0.00	1161113.83	3235790.43	39.772564	-104.661138
	2300.00	0.00	64.33	2300.00	0.00	0.00	0.00	0.00	1161113.83	3235790.43	39.772564	-104.661138
	2400.00	2.00	64.33	2399.98	-1.52	0.76	1.57	2.00	1161114.60	3235791.99	39.772566	-104.661132
	2500.00	4.00	64.33	2499.84	-6.10	3.02	6.29	2.00	1161116.91	3235796.69	39.772572	-104.661116
	2600.00	6.00	64.33	2599.45	-13.71	6.80	14.14	2.00	1161120.76	3235804.51	39.772583	-104.661088
	2700.00	8.00	64.33	2698.70	-24.36	12.08	25.13	2.00	1161126.14	3235815.44	39.772597	-104.661049
	2800.00	10.00	64.33	2797.47	-38.03	18.85	39.23	2.00	1161133.05	3235829.47	39.772616	-104.660998
Hold	2892.03	11.84	64.33	2887.82	-53.27	26.41	54.94	2.00	1161140.75	3235845.11	39.772636	-104.660943
	2900.00	11.84	64.33	2895.63	-54.70	27.11	56.41	0.00	1161141.48	3235846.58	39.772638	-104.660937
	3000.00	11.84	64.33	2993.50	-72.63	36.00	74.91	0.00	1161150.54	3235864.99	39.772663	-104.660872
	3100.00	11.84	64.33	3091.37	-90.56	44.89	93.40	0.00	1161159.60	3235883.40	39.772687	-104.660806
	3200.00	11.84	64.33	3189.24	-108.49	53.78	111.90	0.00	1161168.67	3235901.81	39.772712	-104.660740
	3300.00	11.84	64.33	3287.11	-126.42	62.67	130.39	0.00	1161177.73	3235920.22	39.772736	-104.660674
	3400.00	11.84	64.33	3384.99	-144.35	71.56	148.88	0.00	1161186.79	3235938.62	39.772760	-104.660608
	3500.00	11.84	64.33	3482.86	-162.28	80.45	167.38	0.00	1161195.85	3235957.03	39.772785	-104.660543
	3600.00	11.84	64.33	3580.73	-180.21	89.33	185.87	0.00	1161204.92	3235975.44	39.772809	-104.660477
	3700.00	11.84	64.33	3678.60	-198.14	98.22	204.36	0.00	1161213.98	3235993.85	39.772834	-104.660411
	3800.00	11.84	64.33	3776.48	-216.07	107.11	222.86	0.00	1161223.04	3236012.26	39.772858	-104.660345
	3900.00	11.84	64.33	3874.35	-234.00	116.00	241.35	0.00	1161232.11	3236030.67	39.772882	-104.660279
	4000.00	11.84	64.33	3972.22	-251.93	124.89	259.85	0.00	1161241.17	3236049.08	39.772907	-104.660214
	4100.00	11.84	64.33	4070.09	-269.86	133.78	278.34	0.00	1161250.23	3236067.49	39.772931	-104.660148
	4200.00	11.84	64.33	4167.96	-287.79	142.67	296.83	0.00	1161259.30	3236085.89	39.772956	-104.660082
	4300.00	11.84	64.33	4265.84	-305.72	151.55	315.33	0.00	1161268.36	3236104.30	39.772980	-104.660016
	4400.00	11.84	64.33	4363.71	-323.65	160.44	333.82	0.00	1161277.42	3236122.71	39.773004	-104.659950
	4500.00	11.84	64.33	4461.58	-341.58	169.33	352.31	0.00	1161286.49	3236141.12	39.773029	-104.659885
	4600.00	11.84	64.33	4559.45	-359.51	178.22	370.81	0.00	1161295.55	3236159.53	39.773053	-104.659819
	4700.00	11.84	64.33	4657.33	-377.44	187.11	389.30	0.00	1161304.61	3236177.94	39.773078	-104.659753
	4800.00	11.84	64.33	4755.20	-395.37	196.00	407.79	0.00	1161313.67	3236196.35	39.773102	-104.659687
	4900.00	11.84	64.33	4853.07	-413.30	204.89	426.29	0.00	1161322.74	3236214.75	39.773126	-104.659621
	5000.00	11.84	64.33	4950.94	-431.23	213.78	444.78	0.00	1161331.80	3236233.16	39.773151	-104.659556
	5100.00	11.84	64.33	5048.81	-449.16	222.66	463.28	0.00	1161340.86	3236251.57	39.773175	-104.659490
	5200.00	11.84	64.33	5146.69	-467.09	231.55	481.77	0.00	1161349.93	3236269.98	39.773200	-104.659424
	5300.00	11.84	64.33	5244.56	-485.02	240.44	500.26	0.00	1161358.99	3236288.39	39.773224	-104.659358
	5400.00	11.84	64.33	5342.43	-502.95	249.33	518.76	0.00	1161368.05	3236306.80	39.773248	-104.659292
	5500.00	11.84	64.33	5440.30	-520.88	258.22	537.25	0.00	1161377.12	3236325.21	39.773273	-104.659227
	5600.00	11.84	64.33	5538.18	-538.81	267.11	555.74	0.00	1161386.18	3236343.61	39.773297	-104.659161
	5700.00	11.84	64.33	5636.05	-556.74	276.00	574.24	0.00	1161395.24	3236362.02	39.773322	-104.659095
	5800.00	11.84	64.33	5733.92	-574.67	284.88	592.73	0.00	1161404.31	3236380.43	39.773346	-104.659029
	5900.00	11.84	64.33	5831.79	-592.60	293.77	611.23	0.00	1161413.37	3236398.84	39.773370	-104.658963
	6000.00	11.84	64.33	5929.66	-610.53	302.66	629.72	0.00	1161422.43	3236417.25	39.773395	-104.658898
	6100.00	11.84	64.33	6027.54	-628.46	311.55	648.21	0.00	1161431.49	3236435.66	39.773419	-104.658832
6200.00	11.84	64.33	6125.41	-646.39	320.44	666.71	0.00	1161440.56	3236454.07	39.773444	-104.658766	
6300.00	11.84	64.33	6223.28	-664.33	329.33	685.20	0.00	1161449.62	3236472.47	39.773468	-104.658700	
6400.00	11.84	64.33	6321.15	-682.26	338.22	703.69	0.00	1161458.68	3236490.88	39.773492	-104.658635	
6500.00	11.84	64.33	6419.03	-700.19	347.10	722.19	0.00	1161467.75	3236509.29	39.773517	-104.658569	
6600.00	11.84	64.33	6516.90	-718.12	355.99	740.68	0.00	1161476.81	3236527.70	39.773541	-104.658503	
6700.00	11.84	64.33	6614.77	-736.05	364.88	759.18	0.00	1161485.87	3236546.11	39.773566	-104.658437	
6800.00	11.84	64.33	6712.64	-753.98	373.77	777.67	0.00	1161494.94	3236564.52	39.773590	-104.658371	
6900.00	11.84	64.33	6810.51	-771.91	382.66	796.16	0.00	1161504.00	3236582.93	39.773614	-104.658306	
7000.00	11.84	64.33	6908.39	-789.84	391.55	814.66	0.00	1161513.06	3236601.34	39.773639	-104.658240	
7100.00	11.84	64.33	7006.26	-807.77	400.44	833.15	0.00	1161522.13	3236619.74	39.773663	-104.658174	
7200.00	11.84	64.33	7104.13	-825.70	409.32	851.64	0.00	1161531.19	3236638.15	39.773688	-104.658108	
KOP_Build/Turn 8 DLS	7201.44	11.84	64.33	7105.54	-825.96	409.45	851.91	0.00	1161531.32	3236638.42	39.773688	-104.658107
	7300.00	5.95	27.84	7202.94	-836.92	418.36	863.43	8.00	1161540.34	3236649.85	39.7	

Comments	MD (ft)	Incl (°)	Azim True (°)	TVD (ft)	VSEC (ft)	NS (ft)	EW (ft)	DLS (°/100ft)	Northing (ftUS)	Easting (ftUS)	Latitude (°)	Longitude (°)
	7400.00	7.46	315.46	7302.41	-834.23	427.58	861.29	8.00	1161549.54	3236647.62	39.773738	-104.658074
	7500.00	14.27	291.85	7400.60	-817.69	436.81	845.27	8.00	1161558.62	3236631.51	39.773763	-104.658131
	7600.00	21.89	283.83	7495.61	-787.61	445.87	815.68	8.00	1161567.39	3236601.84	39.773788	-104.658236
	7700.00	29.71	279.85	7585.58	-744.58	454.58	773.09	8.00	1161575.70	3236559.18	39.773812	-104.658388
	7800.00	37.59	277.42	7668.76	-689.44	462.78	718.34	8.00	1161583.38	3236504.35	39.773834	-104.658582
	7900.00	45.52	275.73	7743.54	-623.26	470.29	652.49	8.00	1161590.27	3236438.44	39.773855	-104.658817
	8000.00	53.46	274.45	7808.45	-547.33	476.98	576.83	8.00	1161596.24	3236362.71	39.773873	-104.659086
	8100.00	61.41	273.41	7862.24	-463.13	482.72	492.82	8.00	1161601.18	3236278.65	39.773889	-104.659385
	8200.00	69.37	272.52	7903.85	-372.29	487.39	402.10	8.00	1161605.00	3236187.89	39.773902	-104.659707
	8300.00	77.33	271.71	7932.48	-276.59	490.91	306.43	8.00	1161607.61	3236092.20	39.773912	-104.660048
	8400.00	85.29	270.95	7947.58	-177.88	493.20	207.69	8.00	1161608.96	3235993.44	39.773918	-104.660399
TPZ Point, Hold to TD	8459.07	90.00	270.52	7950.00	-118.95	493.95	148.69	8.00	1161609.16	3235934.44	39.773920	-104.660609
	8500.00	90.00	270.52	7950.00	-78.07	494.32	107.76	0.00	1161609.15	3235893.51	39.773921	-104.660755
	8600.00	90.00	270.52	7950.00	21.80	495.23	7.77	0.00	1161609.11	3235793.51	39.773924	-104.661110
	8700.00	90.00	270.52	7950.00	121.68	496.13	-92.23	0.00	1161609.06	3235693.51	39.773926	-104.661466
	8800.00	90.00	270.52	7950.00	221.55	497.04	-192.23	0.00	1161609.02	3235593.51	39.773928	-104.661822
	8900.00	90.00	270.52	7950.00	321.42	497.94	-292.22	0.00	1161608.98	3235493.51	39.773931	-104.662178
	9000.00	90.00	270.52	7950.00	421.29	498.85	-392.22	0.00	1161608.94	3235393.51	39.773933	-104.662533
	9100.00	90.00	270.52	7950.00	521.16	499.75	-492.21	0.00	1161608.90	3235293.51	39.773936	-104.662889
	9200.00	90.00	270.52	7950.00	621.03	500.66	-592.21	0.00	1161608.86	3235193.51	39.773938	-104.663245
	9300.00	90.00	270.52	7950.00	720.91	501.56	-692.21	0.00	1161608.82	3235093.51	39.773941	-104.663601
	9400.00	90.00	270.52	7950.00	820.78	502.47	-792.20	0.00	1161608.78	3234993.51	39.773943	-104.663956
	9500.00	90.00	270.52	7950.00	920.65	503.37	-892.20	0.00	1161608.74	3234893.52	39.773946	-104.664312
	9600.00	90.00	270.52	7950.00	1020.52	504.28	-992.19	0.00	1161608.70	3234793.52	39.773948	-104.664668
	9700.00	90.00	270.52	7950.00	1120.39	505.18	-1092.19	0.00	1161608.66	3234693.52	39.773951	-104.665024
	9800.00	90.00	270.52	7950.00	1220.26	506.09	-1192.19	0.00	1161608.61	3234593.52	39.773953	-104.665379
	9900.00	90.00	270.52	7950.00	1320.14	506.99	-1292.18	0.00	1161608.57	3234493.52	39.773956	-104.665735
	10000.00	90.00	270.52	7950.00	1420.01	507.90	-1392.18	0.00	1161608.53	3234393.52	39.773958	-104.666091
	10100.00	90.00	270.52	7950.00	1519.88	508.80	-1492.17	0.00	1161608.49	3234293.52	39.773961	-104.666447
	10200.00	90.00	270.52	7950.00	1619.75	509.71	-1592.17	0.00	1161608.45	3234193.52	39.773963	-104.666802
	10300.00	90.00	270.52	7950.00	1719.62	510.61	-1692.16	0.00	1161608.41	3234093.53	39.773966	-104.667158
	10400.00	90.00	270.52	7950.00	1819.49	511.52	-1792.16	0.00	1161608.37	3233993.53	39.773968	-104.667514
	10500.00	90.00	270.52	7950.00	1919.37	512.42	-1892.16	0.00	1161608.33	3233893.53	39.773971	-104.667870
	10600.00	90.00	270.52	7950.00	2019.24	513.33	-1992.15	0.00	1161608.29	3233793.53	39.773973	-104.668225
	10700.00	90.00	270.52	7950.00	2119.11	514.24	-2092.15	0.00	1161608.25	3233693.53	39.773975	-104.668581
	10800.00	90.00	270.52	7950.00	2218.98	515.14	-2192.14	0.00	1161608.20	3233593.53	39.773978	-104.668937
	10900.00	90.00	270.52	7950.00	2318.85	516.05	-2292.14	0.00	1161608.16	3233493.53	39.773980	-104.669293
	11000.00	90.00	270.52	7950.00	2418.72	516.95	-2392.14	0.00	1161608.12	3233393.53	39.773983	-104.669648
	11100.00	90.00	270.52	7950.00	2518.60	517.86	-2492.13	0.00	1161608.08	3233293.53	39.773985	-104.670004
	11200.00	90.00	270.52	7950.00	2618.47	518.76	-2592.13	0.00	1161608.04	3233193.54	39.773988	-104.670360
	11300.00	90.00	270.52	7950.00	2718.34	519.67	-2692.12	0.00	1161608.00	3233093.54	39.773990	-104.670716
	11400.00	90.00	270.52	7950.00	2818.21	520.57	-2792.12	0.00	1161607.96	3232993.54	39.773993	-104.671071
	11500.00	90.00	270.52	7950.00	2918.08	521.48	-2892.12	0.00	1161607.92	3232893.54	39.773995	-104.671427
	11600.00	90.00	270.52	7950.00	3017.95	522.38	-2992.11	0.00	1161607.88	3232793.54	39.773998	-104.671783
	11700.00	90.00	270.52	7950.00	3117.83	523.29	-3092.11	0.00	1161607.84	3232693.54	39.774000	-104.672139
	11800.00	90.00	270.52	7950.00	3217.70	524.19	-3192.10	0.00	1161607.80	3232593.54	39.774002	-104.672494
	11900.00	90.00	270.52	7950.00	3317.57	525.10	-3292.10	0.00	1161607.75	3232493.54	39.774005	-104.672850
	12000.00	90.00	270.52	7950.00	3417.44	526.00	-3392.10	0.00	1161607.71	3232393.54	39.774007	-104.673206
	12100.00	90.00	270.52	7950.00	3517.31	526.91	-3492.09	0.00	1161607.67	3232293.54	39.774010	-104.673562
	12200.00	90.00	270.52	7950.00	3617.18	527.81	-3592.09	0.00	1161607.63	3232193.55	39.774012	-104.673917
	12300.00	90.00	270.52	7950.00	3717.06	528.72	-3692.08	0.00	1161607.59	3232093.55	39.774015	-104.674273
	12400.00	90.00	270.52	7950.00	3816.93	529.62	-3792.08	0.00	1161607.55	3231993.55	39.774017	-104.674629
	12500.00	90.00	270.52	7950.00	3916.80	530.53	-3892.07	0.00	1161607.51	3231893.55	39.774020	-104.674985
	12600.00	90.00	270.52	7950.00	4016.67	531.43	-3992.07	0.00	1161607.47	3231793.55	39.774022	-104.675340
	12700.00	90.00	270.52	7950.00	4116.54	532.34	-4092.07	0.00	1161607.43	3231693.55	39.774024	-104.675696
	12800.00	90.00	270.52	7950.00	4216.41	533.24	-4192.06	0.00	1161607.39	3231593.55	39.774027	-104.676052
	12900.00	90.00	270.52	7950.00	4316.29	534.15	-4292.06	0.00	1161607.34	3231493.55	39.774029	-104.676408
	13000.00	90.00	270.52	7950.00	4416.16	535.05	-4392.05	0.00	1161607.30	3231393.55	39.774032	-104.676763
	13100.00	90.00	270.52	7950.00	4516.03	535.96	-4492.05	0.00	1161607.26	3231293.56	39.774034	-104.677119
	13200.00	90.00	270.52	7950.00	4615.90	536.86	-4592.05	0.00	1161607.22	3231193.56	39.774037	-104.677475
	13300.00	90.00	270.52	7950.00	4715.77	537.77	-4692.04	0.00	1161607.18	3231093.56	39.774039	-104.677831
	13400.00	90.00	270.52	7950.00	4815.64	538.67	-4792.04	0.00	1161607.14	3230993.56	39.774041	-104.678186
	13500.00	90.00	270.52	7950.00	4915.52	539.58	-4892.03	0.00	1161607.10	3230893.56	39.774044	-104.678542
	13600.00	90.00	270.52	7950.00	5015.39	540.48	-4992.03	0.00	1161607.06	3230793.56	39.774046	-104.678898
	13700.00	90.00	270.52	7950.00	5115.26	541.39	-5092.03	0.00	1161607.02	3230693.56	39.774049	-104.679254
	13800.00	90.00	270.52	7950.00	5215.13	542.29	-5192.02	0.00	1161606.98	3230593.56	39.774051	-104.679609
	13900.00	90.00	270.52	7950.00	5315.00	543.20	-5292.02	0.00	1161606.93	3230493.56	39.774054	-104.679965
	14000.00	90.00	270.52	7950.00	5414.87	544.10	-5392.01	0.00	1161606.89	3230393.56	39.774056	-104.680321
	14100.00	90.00	270.52	7950.00	5514.75	545.01	-5492.01	0.00	1161606.85	3230293.57	39.774058	-104.680677
	14200.00	90.00	270.52	7950.00	5614.62	545.91	-5592.01	0.00	1161606.81	3230193.57	39.774061	-104.681032
	14300.00	90.00	270.52	7950.00	5714.49	546.82	-5692.00	0.00	1161606.77	3230093.57	39.774063	-104.681388
	14400.00	90.00	270.52	7950.00	5814.36	547.72	-5792.00	0.00	1161606.73	3229993.57	39.774066	-104.681744
	14500.00	90.00	270.52	7950.00	5914.23	548.63	-5891.99	0.00	1161606.69	3229893.57	39.774068	-104.682100
	14600.00	90.00	270.52	7950.00	6014.10	549.53	-5991.99	0.00	1161606.65	3229793.57	39.774071	-104.682455
	14700.00	90.00	270.52	7950.00	6113.98	550.44	-6091.98	0.00	1161606.61	3229693.57	39.774073	-104.682811
	14800.00	90.00	270.52	7950.00	6213.85	551.34	-6191.98	0.00	1161606.57	3229593.57	39.774075	-104.683167
	14900.00	90.00	270.52	7950.00	6313.72	552.25	-6291.98	0.00	1161606.53	3229493.57	39.774078	-104.683523
	15000.00	90.00	270.52	7950.00	6413.59	553.15	-6391.97	0.00	1161606.48	3229393.		

Comments	MD (ft)	Incl (°)	Azim True (°)	TVD (ft)	VSEC (ft)	NS (ft)	EW (ft)	DLS (°/100ft)	Northing (ftUS)	Easting (ftUS)	Latitude (°)	Longitude (°)
	18100.00	90.00	270.52	7950.00	9509.61	581.21	-9491.85	0.00	1161605.21	3226293.61	39.774155	-104.694907
	18200.00	90.00	270.52	7950.00	9609.49	582.11	-9591.84	0.00	1161605.17	3226193.61	39.774157	-104.695262
	18300.00	90.00	270.52	7950.00	9709.36	583.02	-9691.84	0.00	1161605.13	3226093.61	39.774159	-104.695618
Schuh 3-65 21- 20 3BH BHL	18370.50	90.00	270.52	7950.00	9779.77	583.66	-9762.34	0.00	1161605.10	3226023.11	39.774161	-104.695869

Survey Type: Def Plan

Survey Error Model: ISCWSA Rev 0 *** 3-D 95.000% Confidence 2.7955 sigma
Survey Program:

Description	Part	MD From (ft)	MD To (ft)	EOU Freq (ft)	Hole Size (in)	Casing Diameter (in)	Expected Max Inclination (deg)	Survey Tool Type	Borehole / Survey
	1	0.000	28.000	1/100.000	13.500	9.625		NAL_MWD-NON_SLB-Depth Only	Original Hole / Schuh 3-65 21-20 3BH Plan #0
	1	28.000	2190.000	1/100.000	13.500	9.625		NAL_MWD-NON_SLB	Original Hole / Schuh 3-65 21-20 3BH Plan #0
	1	2190.000	18370.504	1/100.000	8.500	5.500		NAL_MWD_PLUS_0.5_DEG	Original Hole / Schuh 3-65 21-20 3BH Plan #0