

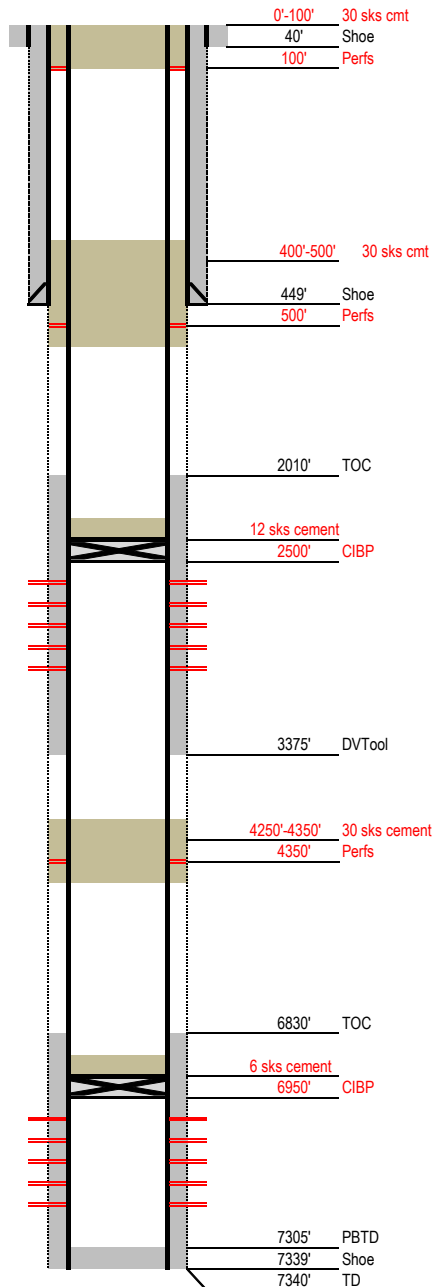
Laramie Energy

Proposed P&A Wellbore Diagram

Not to Scale

FEDERAL WELL: YES ☐ NO ☒

Geological Tops	Depth (MD)
Cameo	2087'
Rollins	2363'
Cozzette	2562'
Corcoran	2757'
Sego	2908'
Mancos	3043'
Frontier	6866'
Dakota	6986'
Cedar Mountain	7151'
Morrison	7204'



Well Name Horseshoe Canyon 3-29
API 05-077-08658-00
Surface Location NWNW S29, T9S, R97W
GPS Coordinates 39.249020 -108.248962
Bottom Hole Loc 900 FNL & 688 FWL SEC 29 T9S R97W
Field Shire Gulch # 77450
County, State Mesa, CO # 077
Spud Date
Completion Date 12/27/1992
Diagram Date 3/5/2020
KB Elevation 5509'
KB 13'
GL Elevation 5496'

Hole -
Conductor 16" .25" wall @ 40'
Cement Surface

Surface Hole 12.25" @ 450'
Casing 8.625" 24# K55 STC @ 449'
Cement 305sx reg w/3% CaCl
TOC Surface

Production Hole 7.875" @ 7340'
Casing 5.5" 15.5# K55 LTC @ 7339"
Cement 1st stage CBL 6840' 2nd stage 2900
TOC 2010' Schlumberger CBL dated 12/27/1992

Tubing 2 3/8" 4.7 ppf J55 EUE @ 7030'

Perforations	Top	Bottom
	2580'	2618'
	2797'	2853'
	7041'	7076'
	7152'	7203'