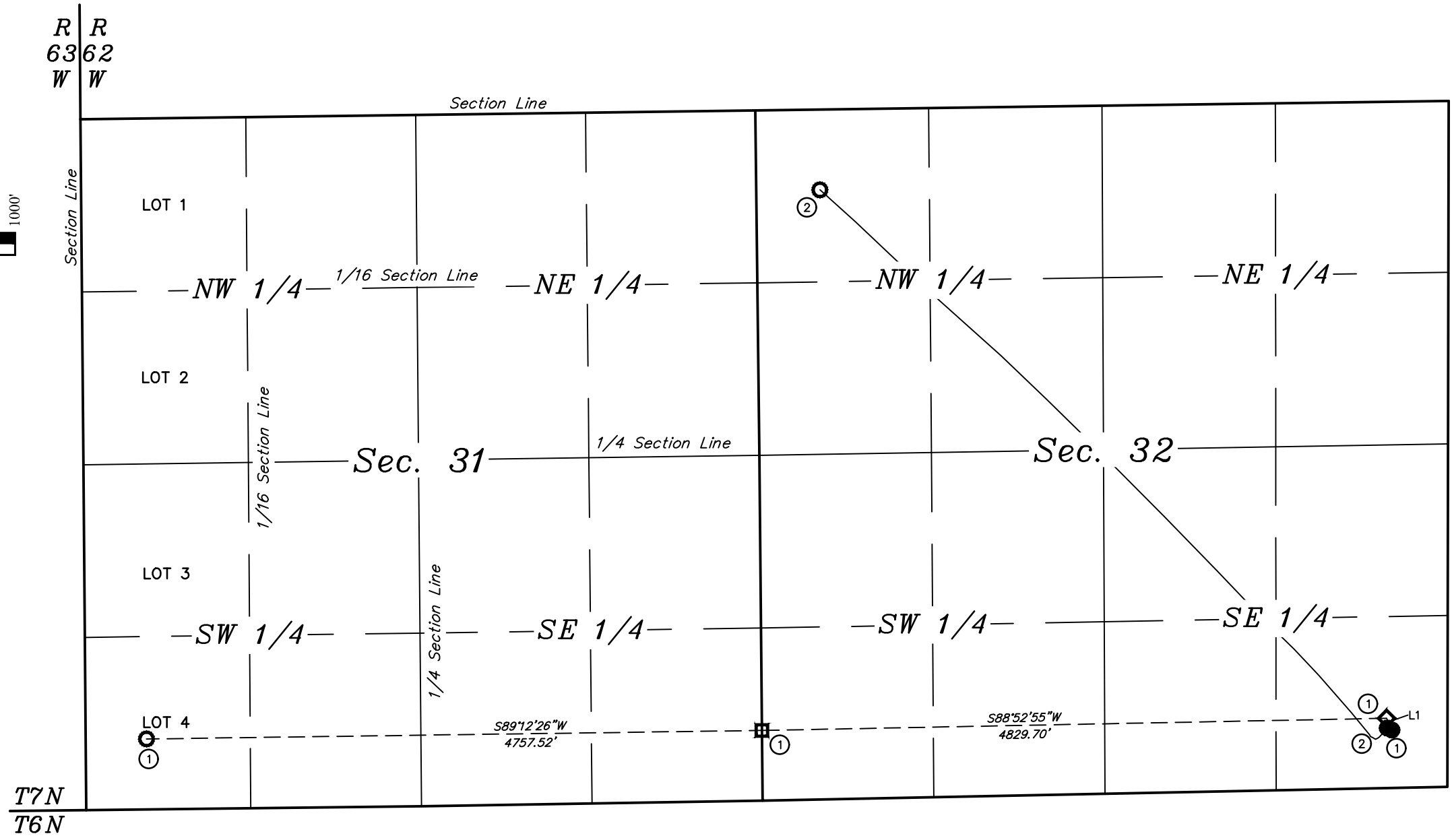
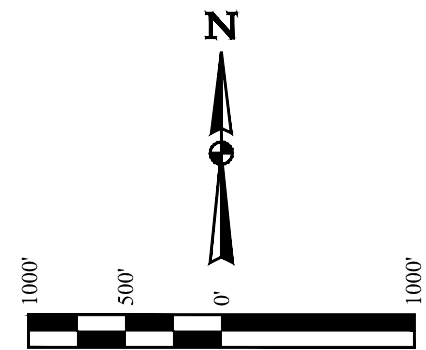


- LEGEND:
- = SURFACE LOCATION.
  - ◆ = TARGET 1 LOCATION.
  - ▣ = MID-LATERAL TARGET.
  - = TARGET BOTTOM HOLE.



LINE TABLE		
LINE	DIRECTION	LENGTH
L1	N24°47'05"W	100.50'

#	WELL NAME	SHL FOOTAGE			SHL LAT (NAD 83)	SHL LONG (NAD 83)	SHL PDOP	SHL ELEV.	SHL 1/4 1/4	
1	EXISTING CROW VALLET 7-62-31 #1H	464'	FSL	465'	FEL	N 40.524432°	W 104.338661°	2.8	4915.0	SESE
2	CROW VALLEY Y44-32-31XRLNB	448'	FSL	428'	FEL	N 40.524389°	W 104.338529°	1.5	4915.0	SESE

REV: 1 12-19-19 K.B. (PAD NAME CHANGE)

**BONANZA CREEK ENERGY  
OPERATING COMPANY, LLC**

**CROW VALLEY 44-32 WELL PAD  
SE 1/4 SE 1/4, SECTION 32, T7N, R62W, 6th P.M.  
WELD COUNTY, COLORADO**

SURVEYED BY	JARED CHRISTOPHER	11-21-19	SCALE
DRAWN BY	C.IVIE	11-25-19	1" = 1000'

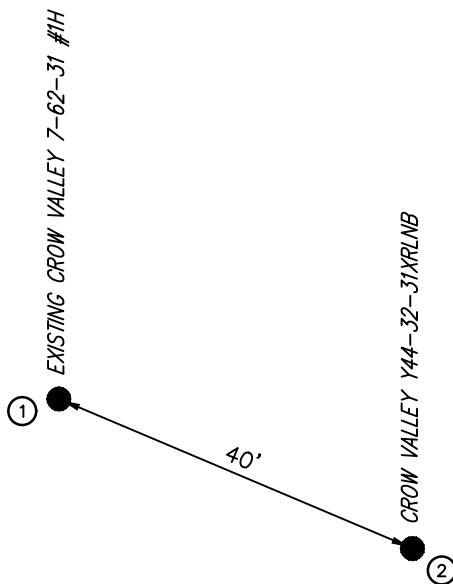
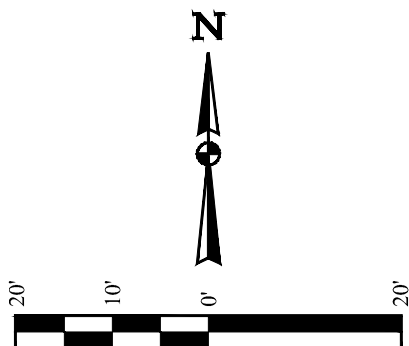
**MULTI-WELL PLAN**



**UELS, LLC**  
Corporate Office \* 85 South 200 East  
Vernal, UT 84078 \* (435) 789-1017

# LEGEND:

● = SURFACE LOCATION.



REV: 1 12-19-19 K.B. (PAD NAME CHANGE)

#	WELL NAME	SHL FOOTAGE			SHL LAT (NAD 83)	SHL LONG (NAD 83)	SHL PDOP	SHL ELEV.	SHL 1/4 1/4
1	EXISTING CROW VALLEY 7-62-31 #1H	464'	FSL	465'	FEL	N 40.524432°	W 104.338661°	2.8	4915.0 SESE
2	CROW VALLEY Y44-32-31XRLNB	448'	FSL	428'	FEL	N 40.524389°	W 104.338529°	1.5	4915.0 SESE

## NOTES:

## BONANZA CREEK ENERGY OPERATING COMPANY, LLC

CROW VALLEY 44-32 WELL PAD  
SE 1/4 SE 1/4, SECTION 32, T7N, R62W, 6th P.M.  
WELD COUNTY, COLORADO

*SHEET 2 OF 2*

UELS, LLC

Corporate Office \* 85 South 200 East  
Vernal, UT 84078 \* (435) 789-1017

SURVEYED BY	JARED CHRISTOPHER	11-21-19	SCALE
DRAWN BY	C.IVIE	11-25-19	1" = 20'

**MULTI-WELL PLAN**

