



## MICRO LOG

Company	McCOY PETROLEUM CORPORATION	Company	McCOY PETROLEUM CORPORATION
Well	ALC 1748#1-33	Well	ALC 1748#1-33
Field	N/A	Field	N/A
County	KIOWA	County	KIOWA
State	COLORADO	State	COLORADO
Location:	API # : 05-061-068899-00-00 NE-SE 1980 FSL & 660 FEL	Other Services CDL/CNL/DIL SON	
Permanent Datum	SEC 33 TWP 17S RGE 48W	Elevation	
Log Measured From	GROUND LEVEL	K.B. 4270	
Drilling Measured From	KELLY BUSHING 11' A.G.L. KELLY BUSHING	D.F. 4268	
		G.L. 4259	
Date	03/18/20		
Run Number	FOUR		
Depth Driller	5310		
Depth Logger	5310		
Bottom Logged Interval	5290		
Top Log Interval	3500		
Casing Driller	13 3/8@334		
Casing Logger	334		
Bit Size	7 7/8"		
Type Fluid in Hole	CHEMICAL MUD		
Density / Viscosity	9.1/60		
pH / Fluid Loss	10.5/6.4		
Source of Sample	FLOWLINE		
Rm @ Meas. Temp	1.5@65		
Rmf @ Meas. Temp	1.12@65		
Rmc @ Meas. Temp	1.8@65		
Source of Rmf / Rmc	MEASURED		
Rm @ BHT	.76@127F		
Time Circulation Stopped	2 HOURS		
Time Logger on Bottom	////		
Maximum Recorded Temperature	127F		
Equipment Number	1523		
Location	HAYS, KANSAS		
Recorded By	GUS PFANENSTIEL		
Witnessed By	LARRY A. NICHOLSON		

<<< Fold Here >>>

All interpretations are opinions based on inferences from electrical or other measurements and we cannot and do not guarantee the accuracy or correctness of any interpretation, and we shall not, except in the case of gross or willful negligence on our part, be liable or responsible for any loss, costs, damages, or expenses incurred or sustained by anyone resulting from any interpretation made by any of our officers, agents or employees. These interpretations are also subject to our general terms and conditions set out in our current Price Schedule.

### Comments

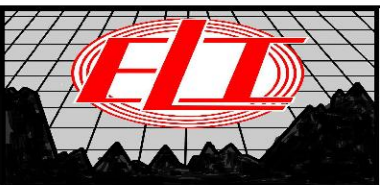
THANK YOU FOR USING ELI WIRELINE, HAYS, KS. (785) 628-6395

### DIRECTIONS

EADS NORTH TO V RD. 1/8 WEST, NORTH INTO.

### LAT / LONG

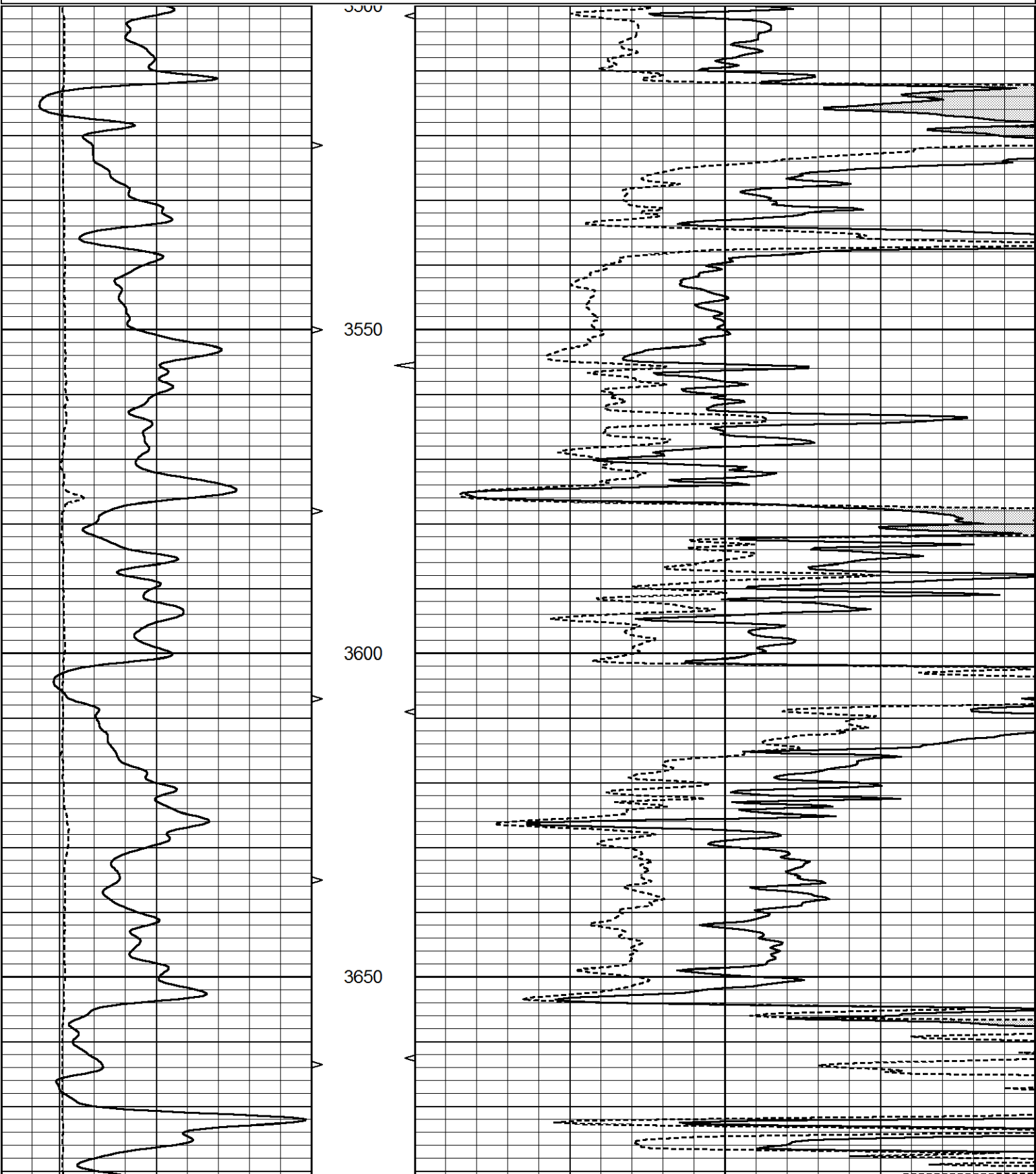
38.53271 / -102.78809

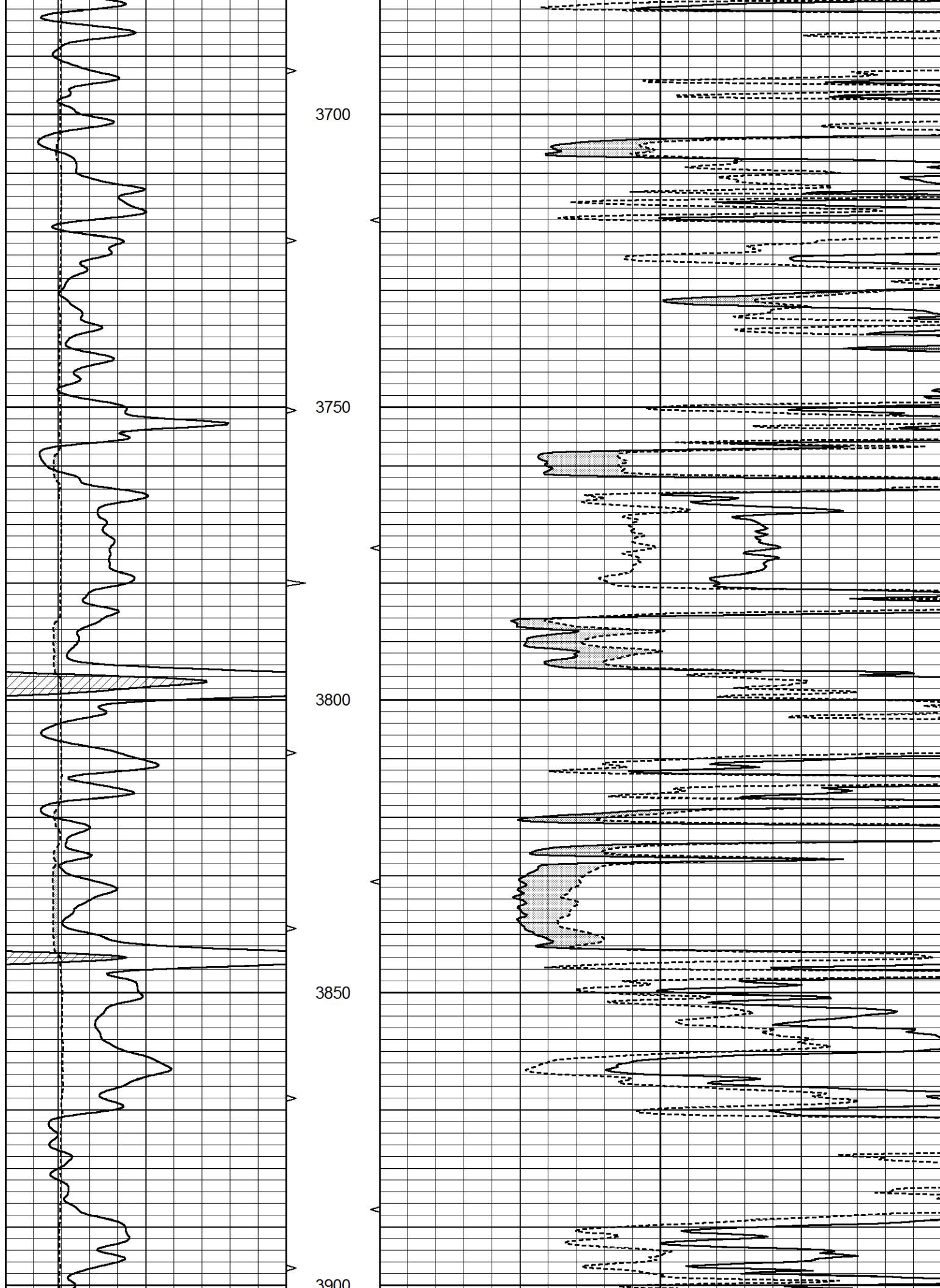


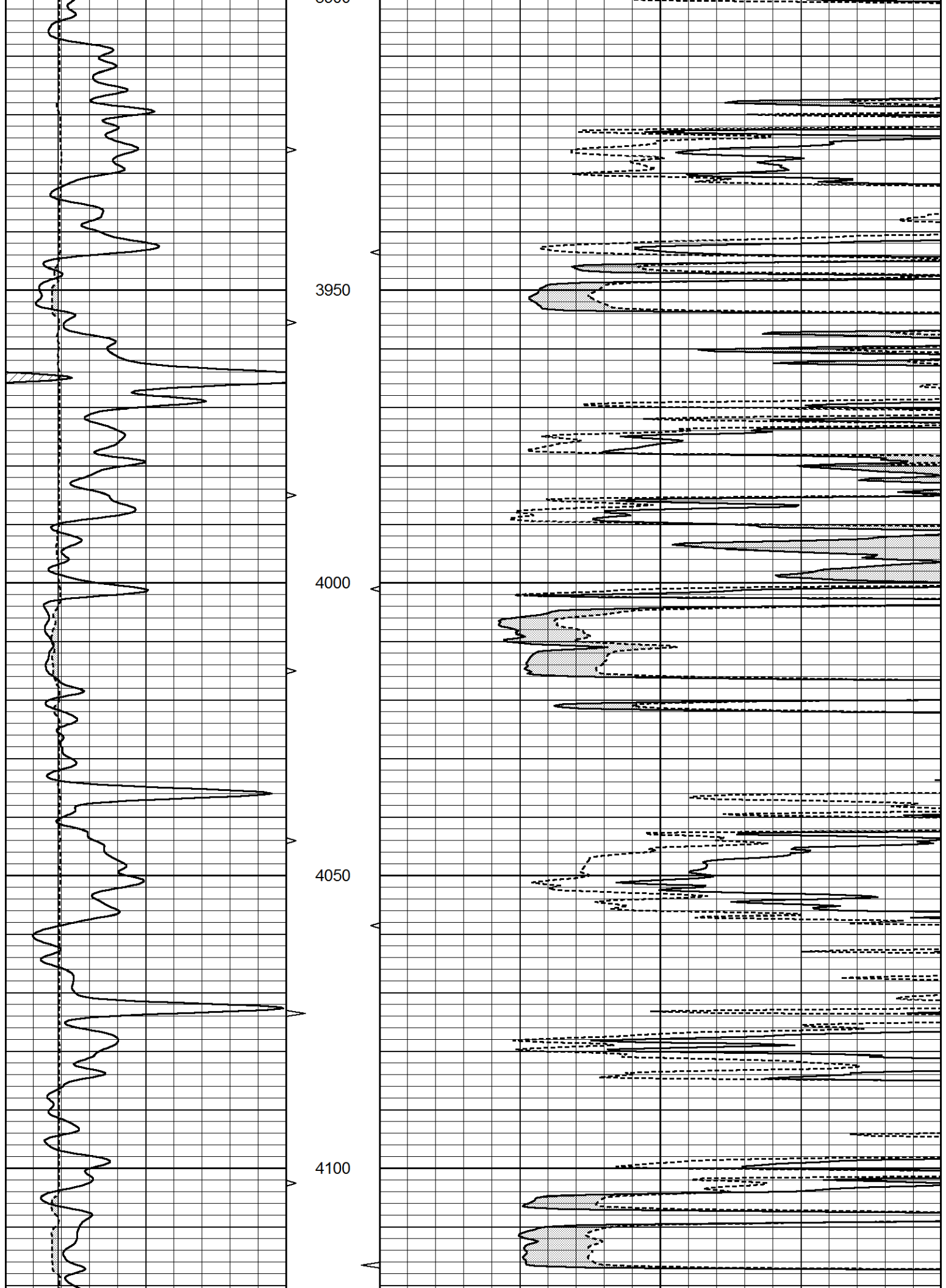
# MAIN PASS

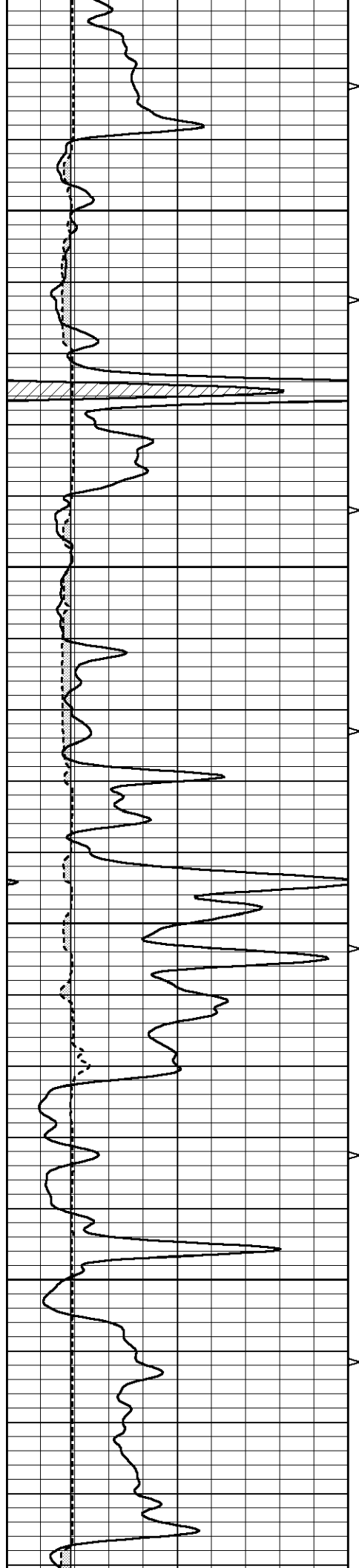
Database File	4685pe.db
Dataset Pathname	pass2M
Presentation Format	_micro
Dataset Creation	Wed Mar 18 18:53:35 2020
Charted by	Depth in Feet scaled 1:240

0	GAMMA RAY (GAPI)	150	ABHV	0	MEL1.5 (Ohm-m)	40
6	CALIPER (in)	16	10 (ft3)	0 0	MEL2.0 (Ohm-m)	40
			TBHV			
			0 (ft3)	10		







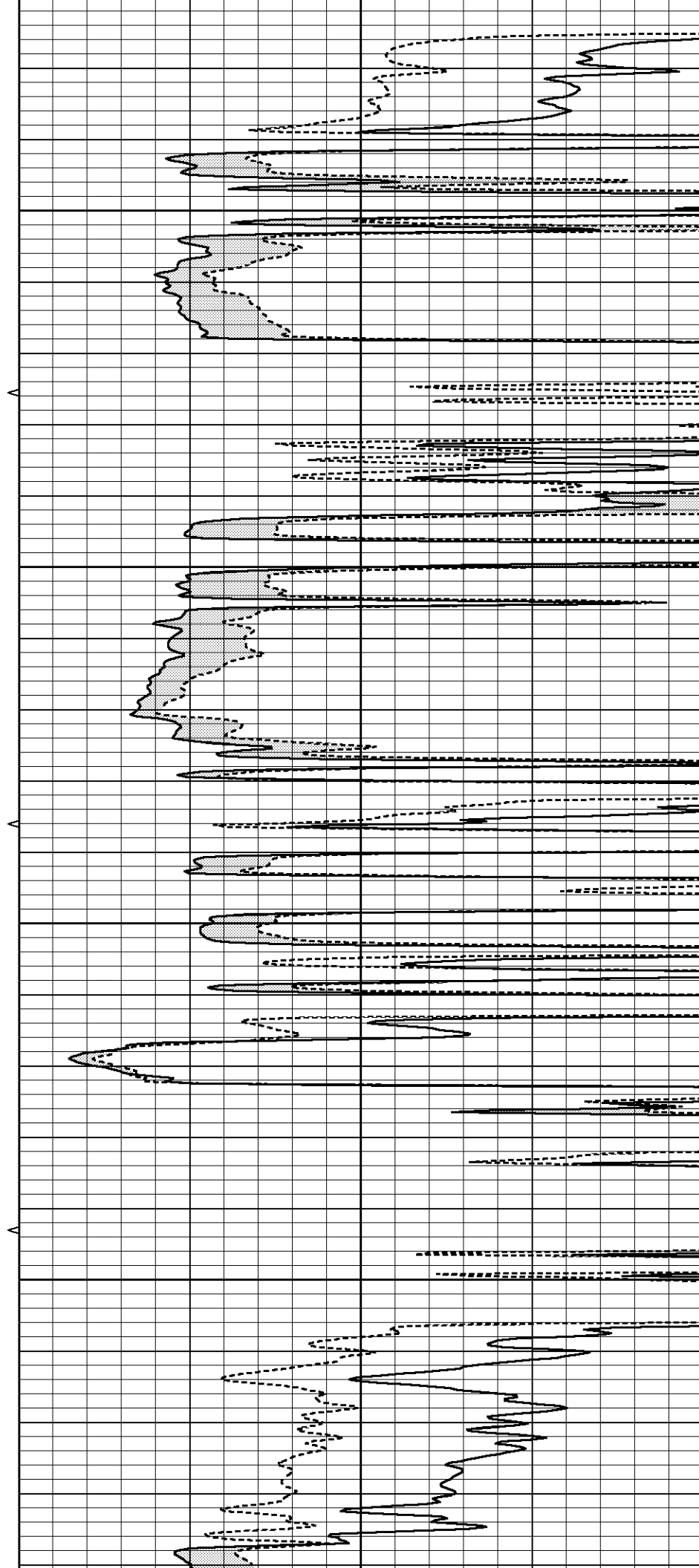


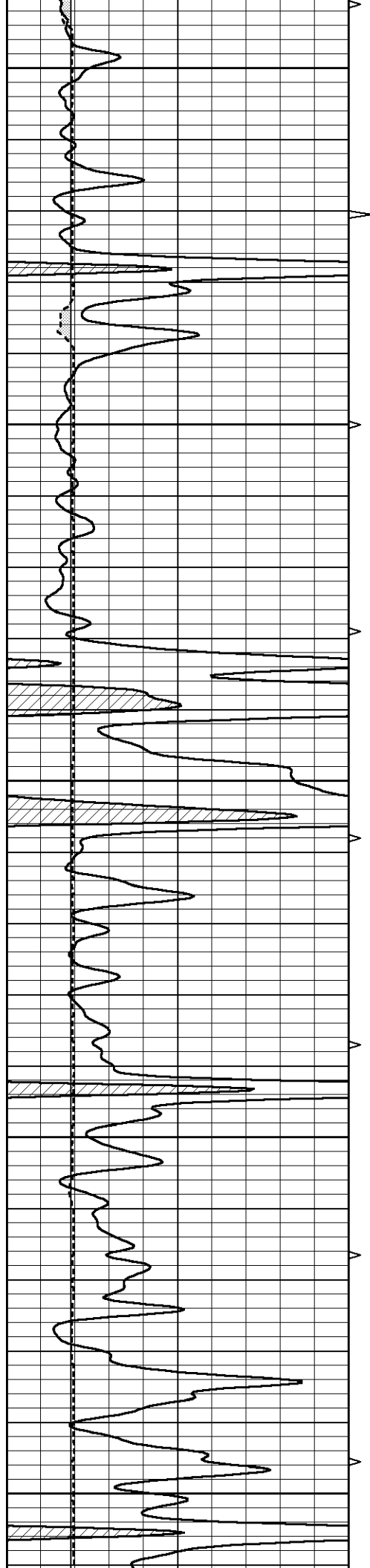
4150

4200

4250

4300





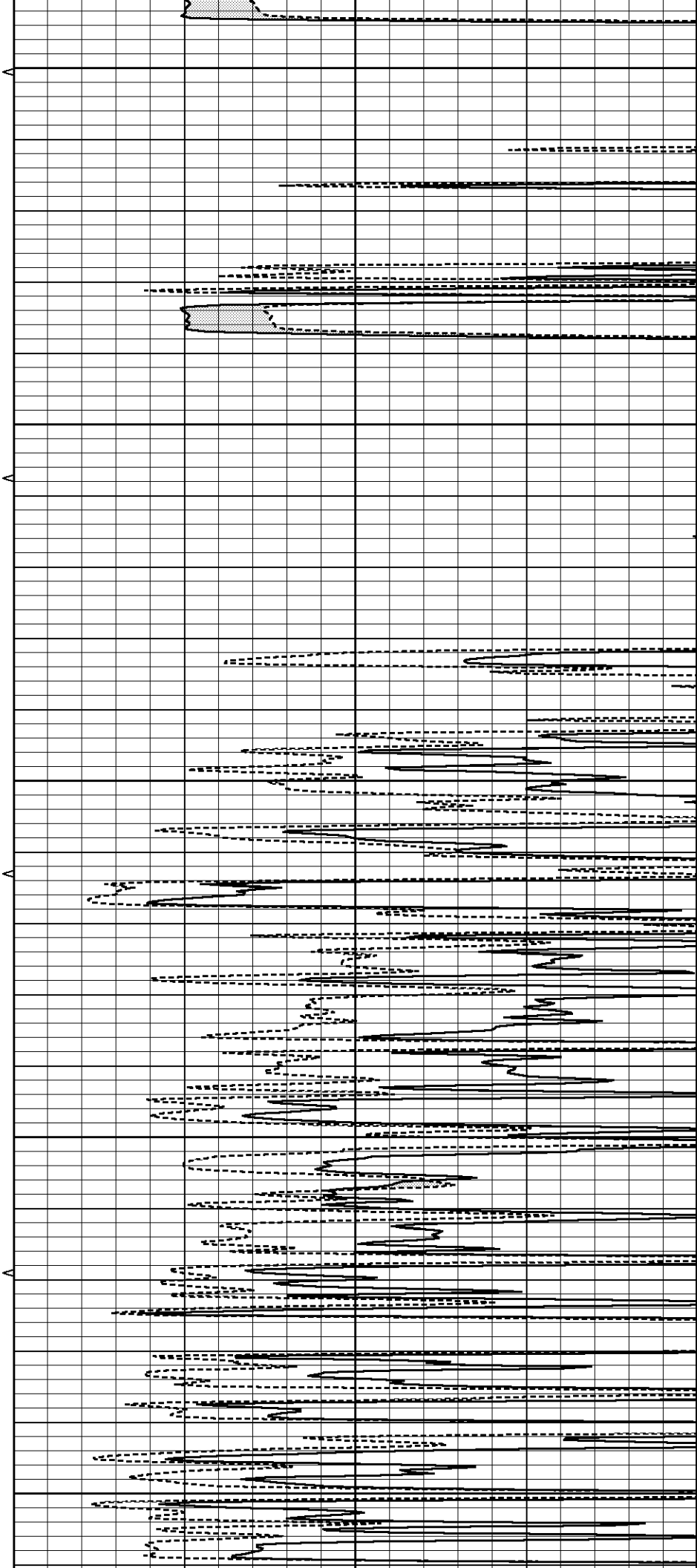
4350

4400

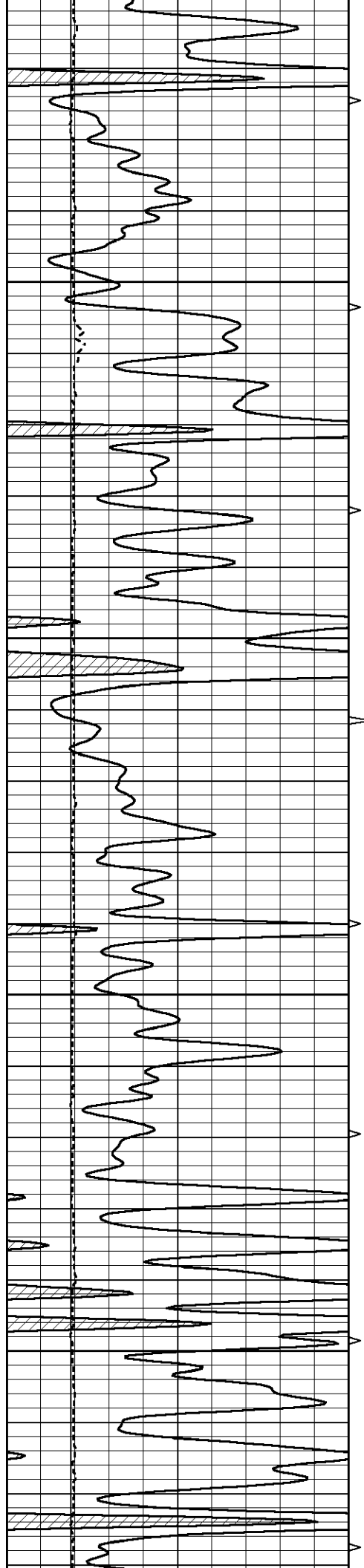
4450

4500

4550





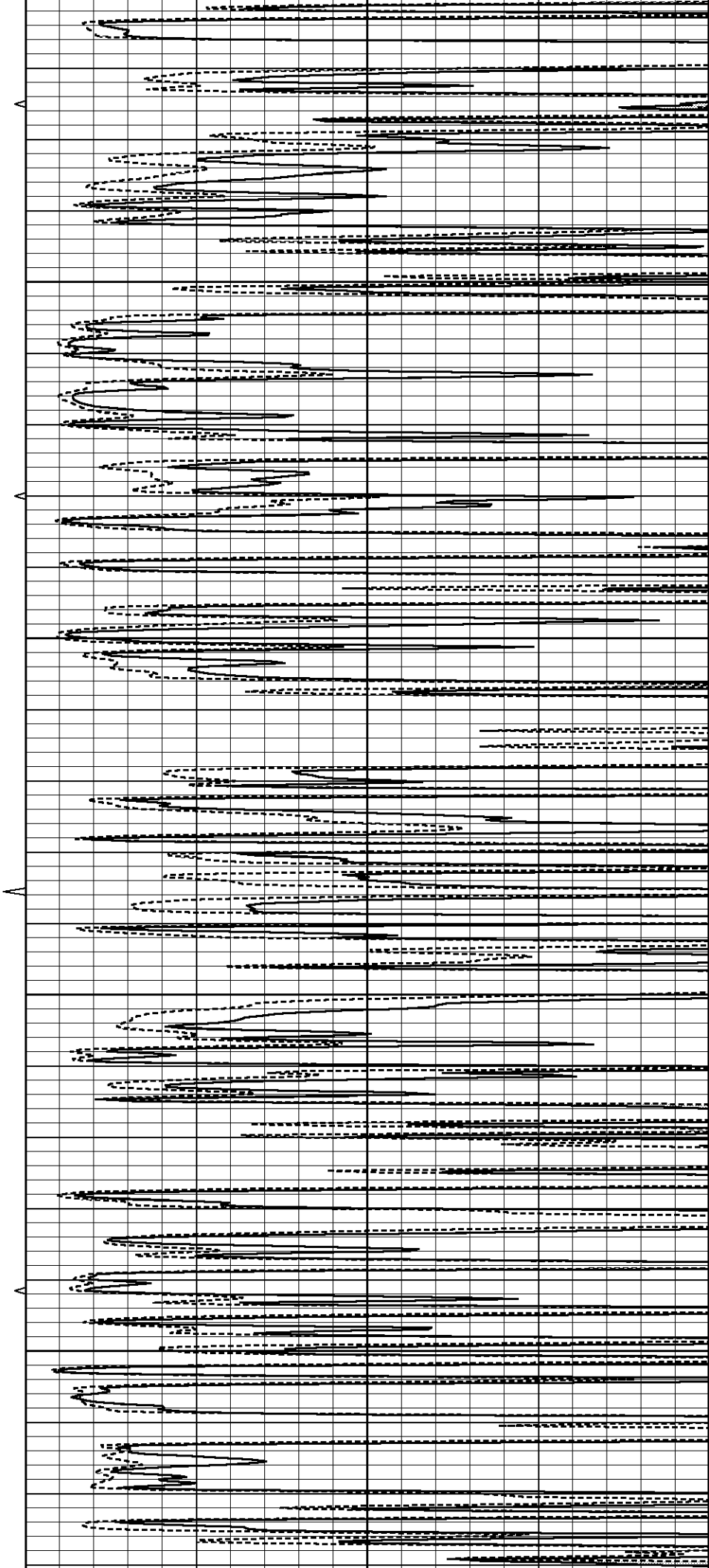


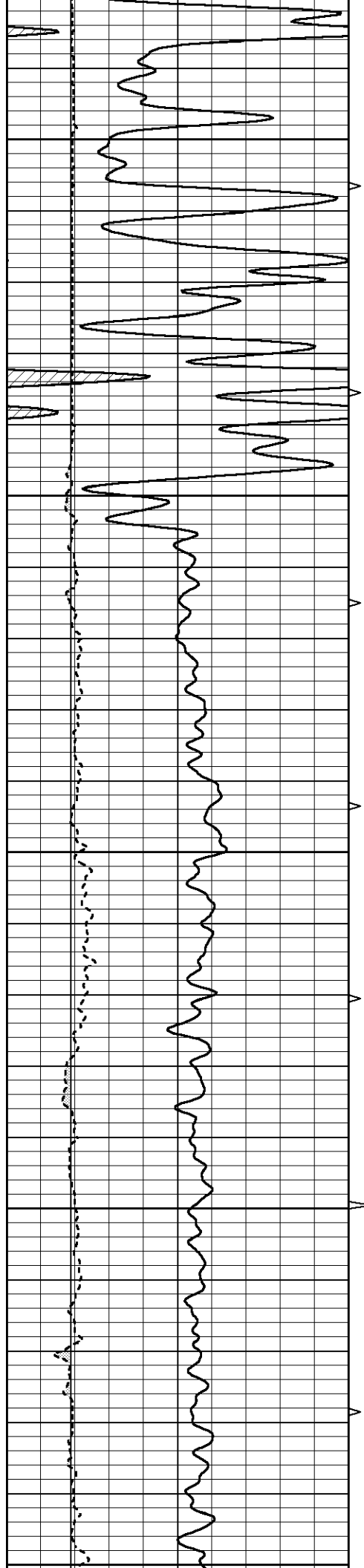
4600

4650

4700

4750





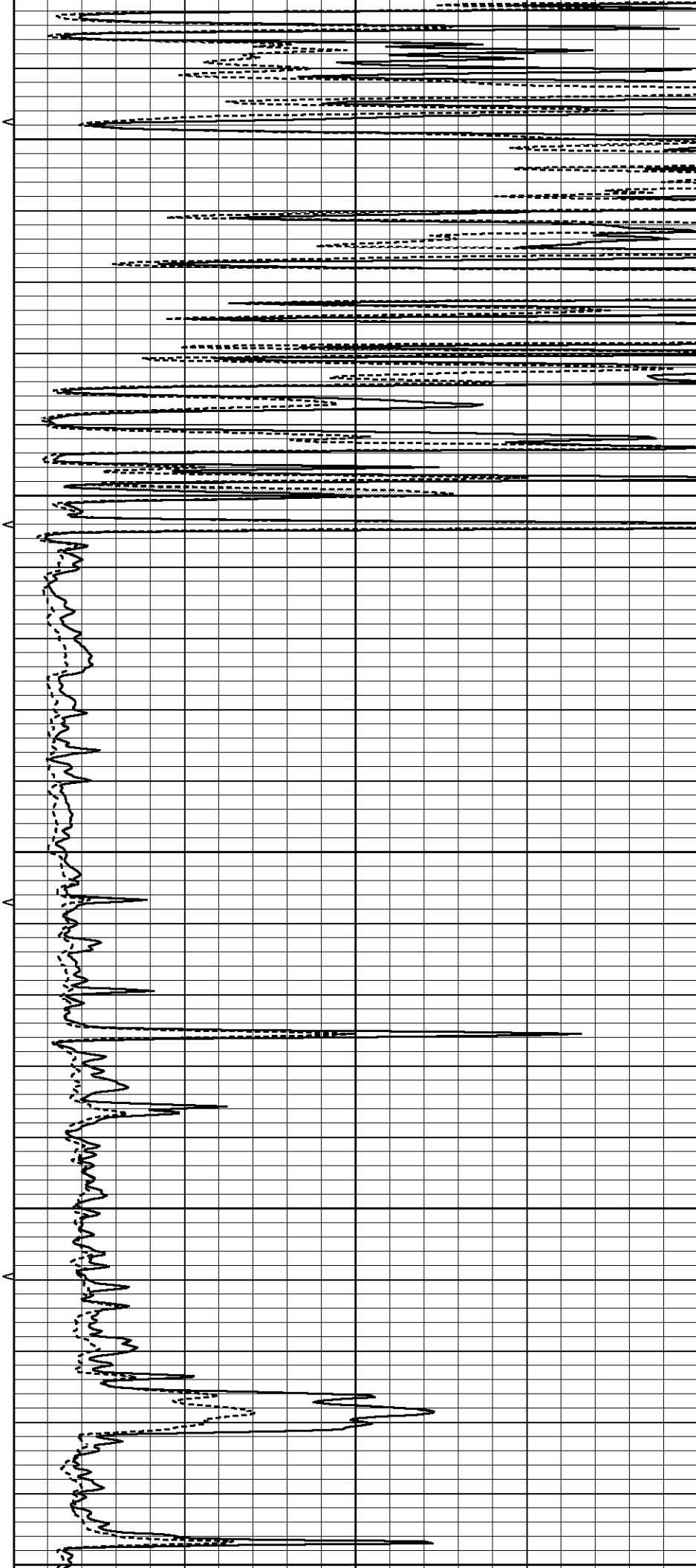
4800

4850

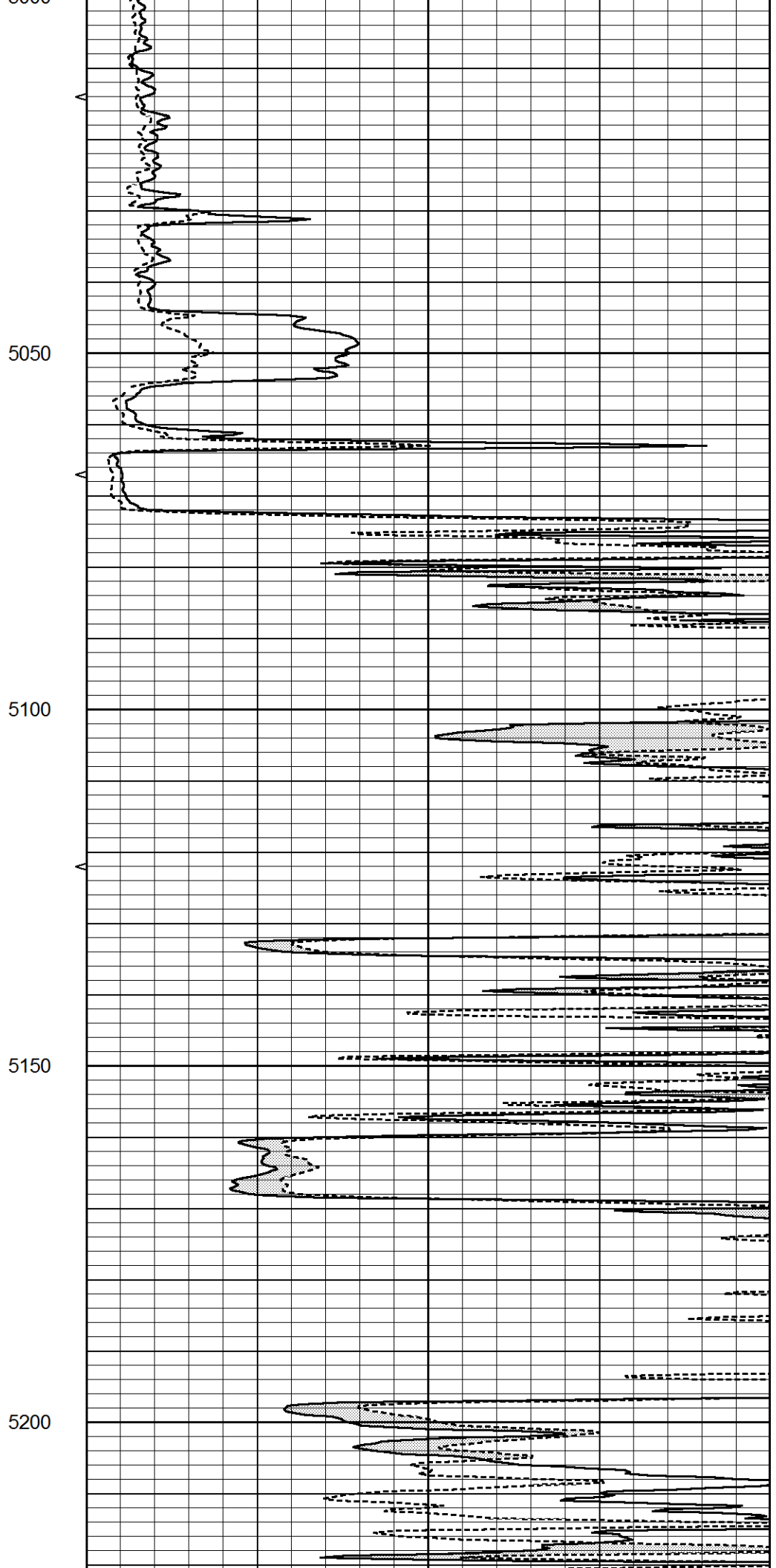
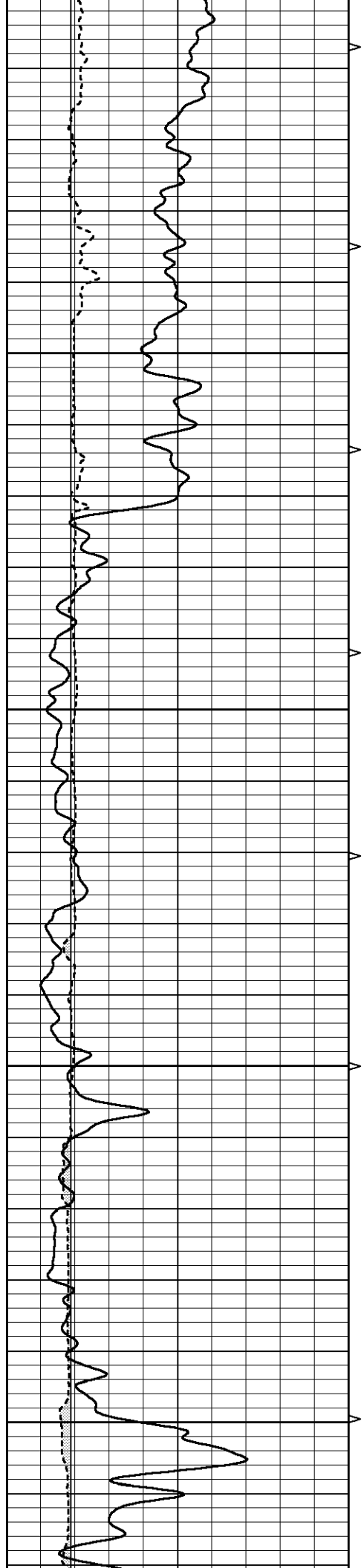
4900

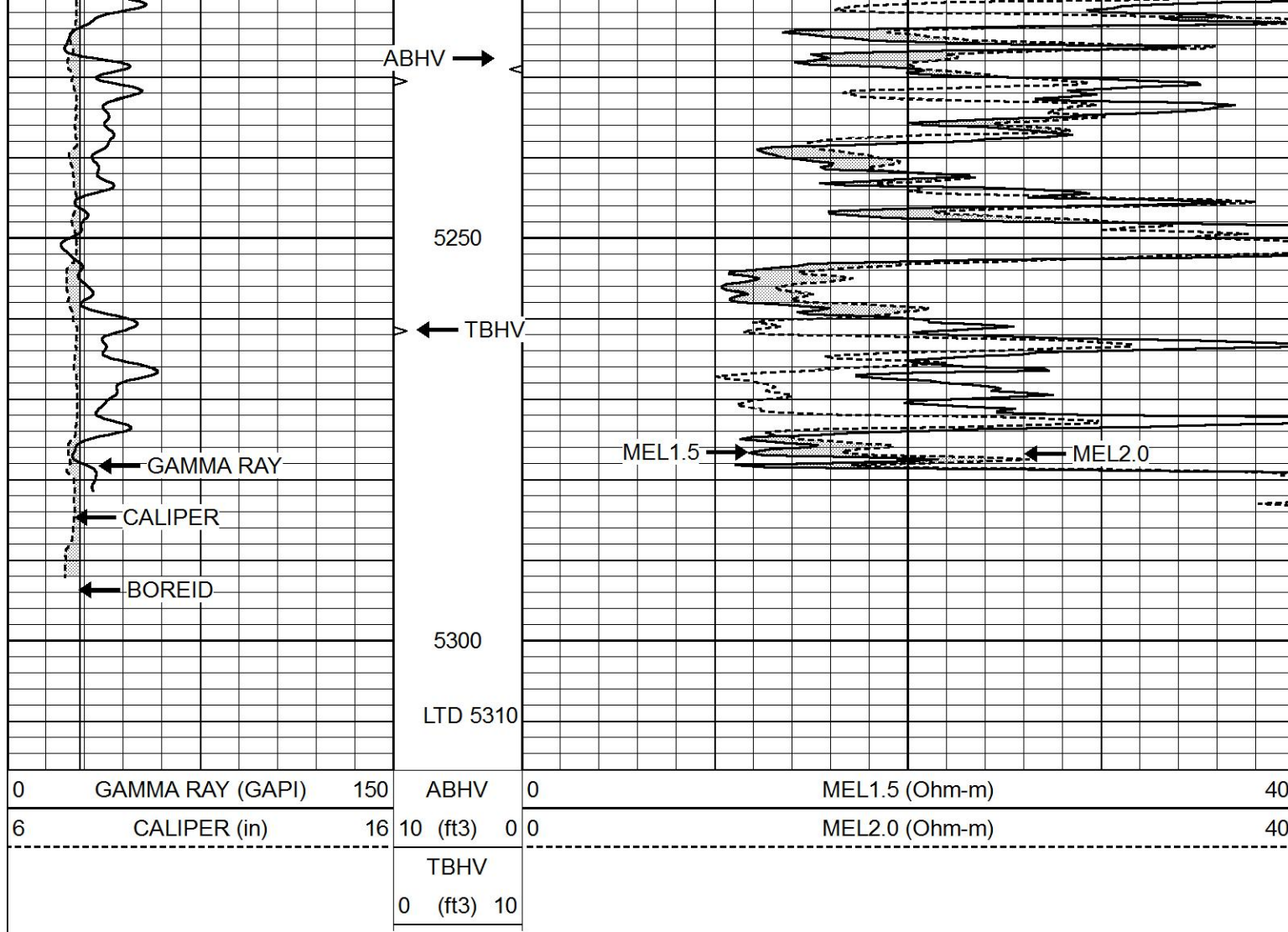
4950

5000





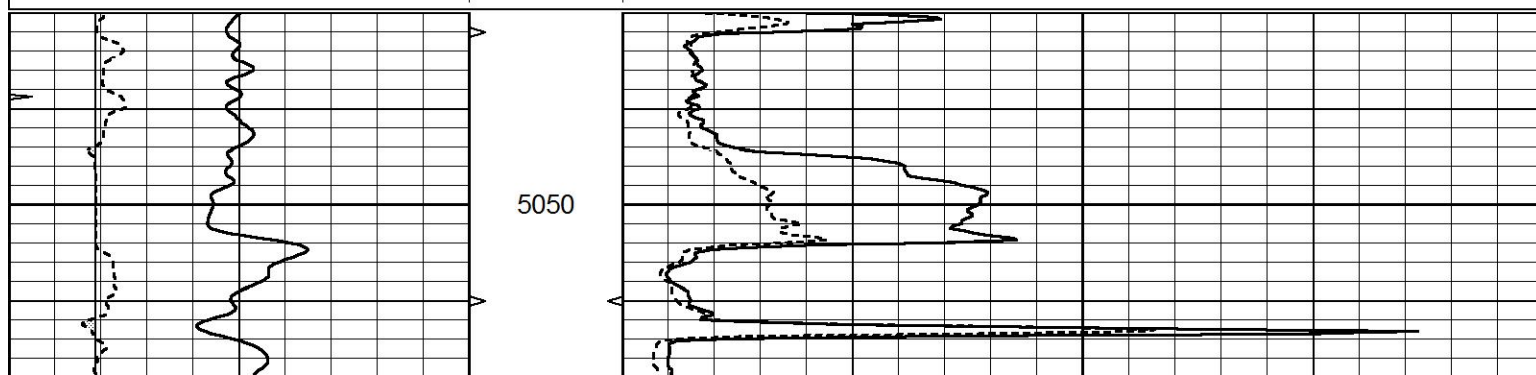


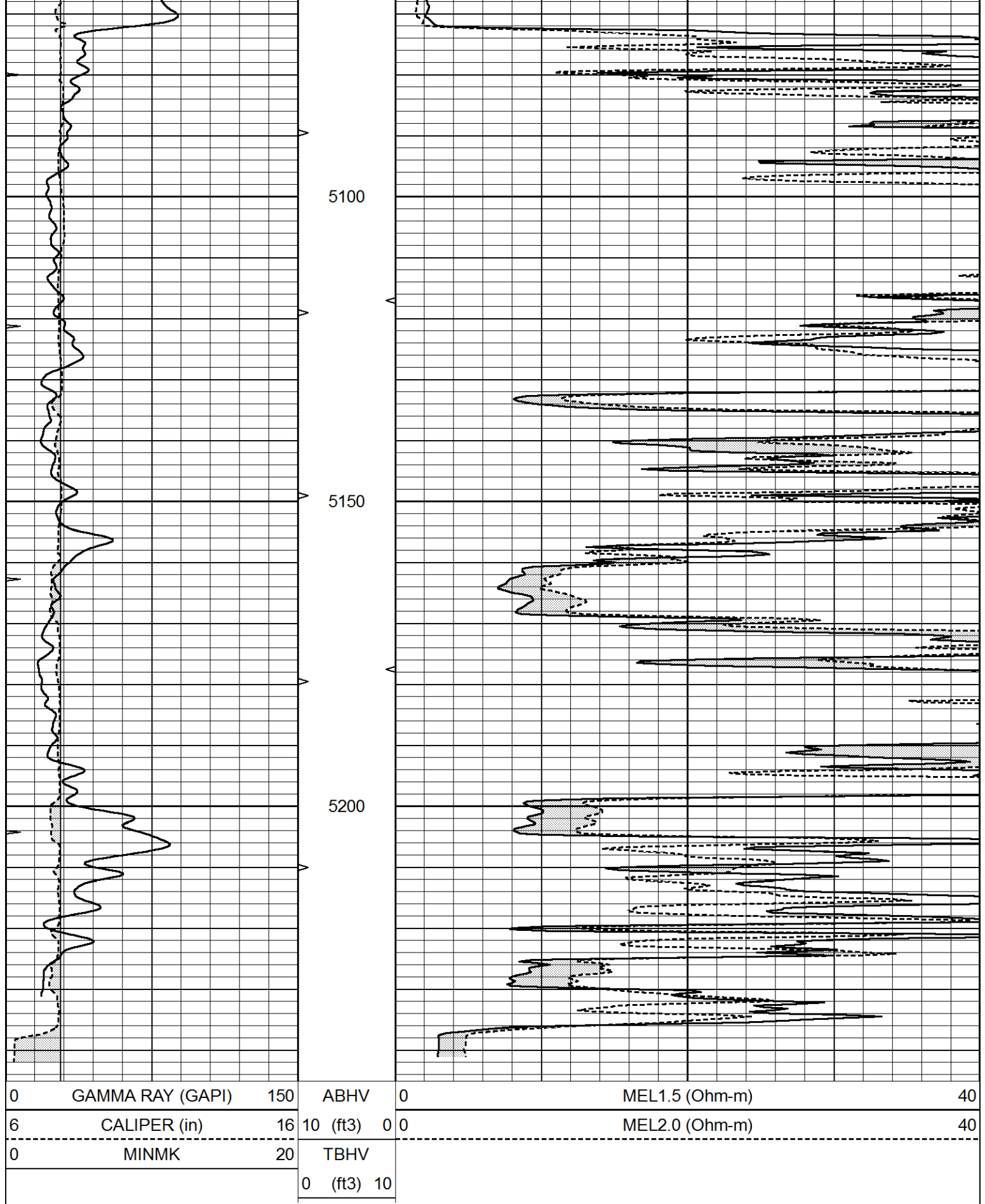


# REPEAT SECTION

Database File 4685pe.db  
 Dataset Pathname pass5.1  
 Presentation Format \_micro  
 Dataset Creation Wed Mar 18 03:43:21 2020  
 Charted by Depth in Feet scaled 1:240

0	GAMMA RAY (GAPI)	150	ABHV	0	MEL1.5 (Ohm-m)	40
6	CALIPER (in)	16	10 (ft3) 0	0	MEL2.0 (Ohm-m)	40
			TBHV			
			0 (ft3) 10			





### Calibration Report

Database File 4685pe.db  
 Dataset Pathname pass5.1  
 Dataset Creation Wed Mar 18 03:43:21 2020

## MICRO Calibration Report

Serial Number:	Micro1
Tool Model:	ProbeL
Performed:	Sun Mar 15 19:24:54 2020

Caliper Calibration:	Gain=3.980	Offset=5.051
References	Low Cal	High Cal
Readings	9.500	13.000
	0.308	2.032

1.5" Calibration:	Gain=36.134	Offset=-1.000
References	Low Cal	High Cal
Readings	0.000	20.000
	0.004	0.832

2" Calibration:	Gain=38.000	Offset=-0.800
References	Low Cal	High Cal
Readings	0.000	20.000
	0.022	0.793

## Gamma Ray Calibration Report

Serial Number:	GR5
Tool Model:	OPEN
Performed:	Sun Jan 05 05:38:27 2020

Calibrator Value:	1.0	GAPI
Background Reading:	0.0	cps
Calibrator Reading:	1.0	cps
Sensitivity:	0.5000	GAPI/cps