

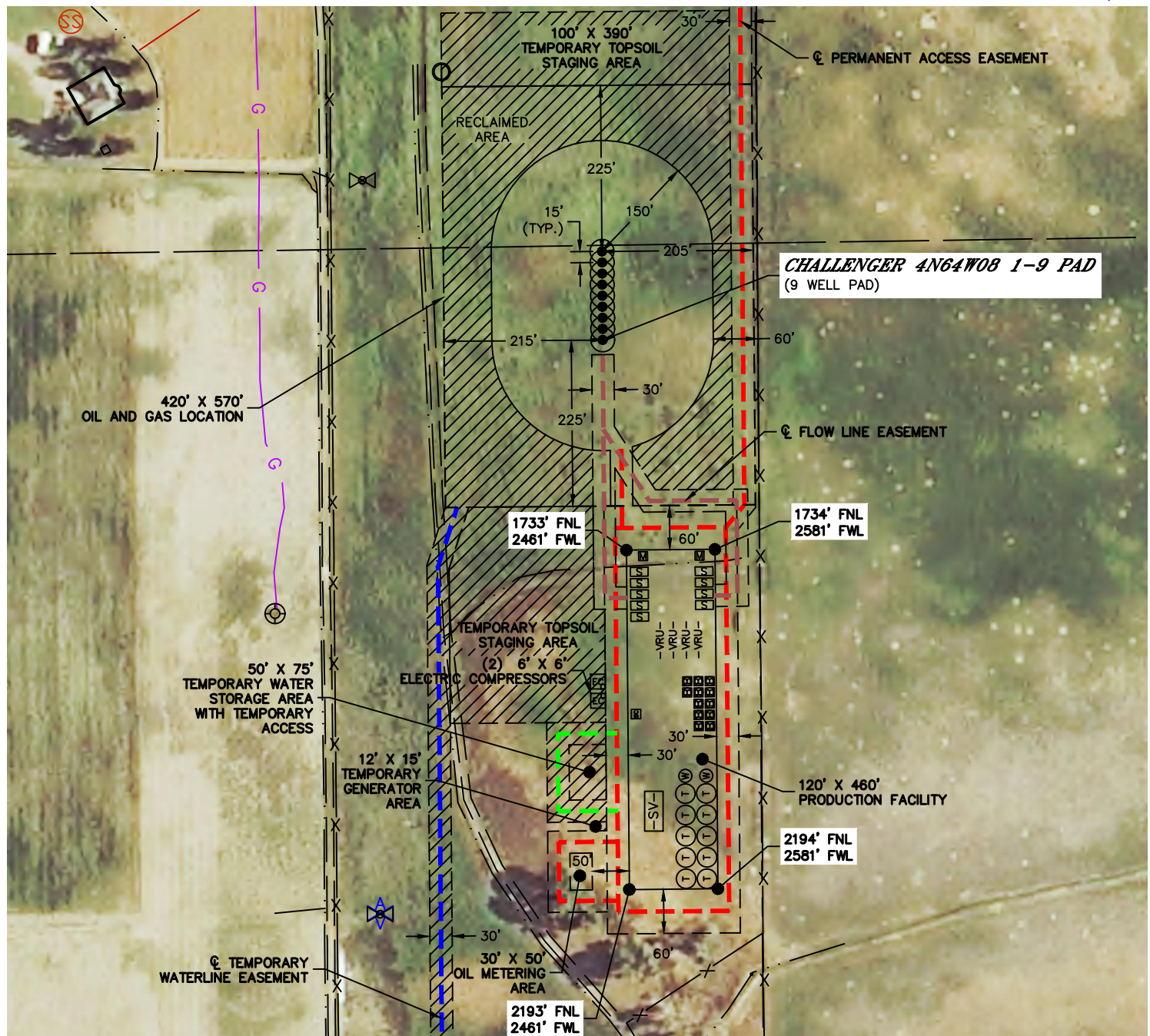


Lat40°, Inc. 6250 W. 10th Street, Unit 2, Greeley, CO 970-515-5294

PROPOSED SCALED FACILITY DRAWING

CHALLENGER 4N64W08 1-9 PAD

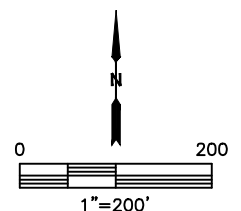
SECTION: 8
TOWNSHIP: 4N
RANGE: 64W
6TH. P.M.
WELD COUNTY, CO



TOTAL DISTURBED AREA OF LOCATION: ±12.4 ACRES
TOTAL SIZE OF LOCATION AFTER RECLAMATION: ±6.7 ACRES

LEGEND

⊙	PROPOSED WELL HEAD	⌬	METER
(T)	TANK BATTERY	BC	BLOWCASE
(W)	WATER TANK	-VRU-	VAPOR RECOVERY UNIT
(W)	WATER VAULT	⌬	TEMPORARY GENERATOR
[S]	SEPARATOR	EC	ELECTRIC COMPRESSOR
⊗	TWO PHASE UPRIGHT SEPARATOR	-SV-	SURGE VESSEL
⊠	ECD	-LACT-	OIL METERING
		-GLC-	GAS LIFT COMPRESSOR



DATE: 8/16/2019
PROJECT#: 2016123