



# **BISON OIL & GAS II, LLC**

**WELD COUNTY, COLORADO (NAD 83)**

**NE NW SEC. 6 T8N R60W 6th P.M.**

**HUNT FED 8-60 6A-31-30-7**

**ORIGINAL WELLBORE**

**23 March, 2020**

**Plan: PROPOSAL #2**



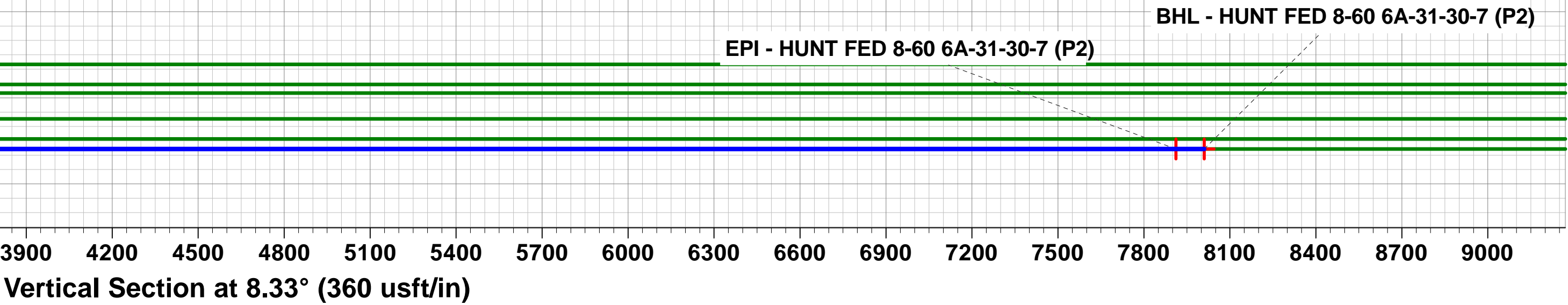
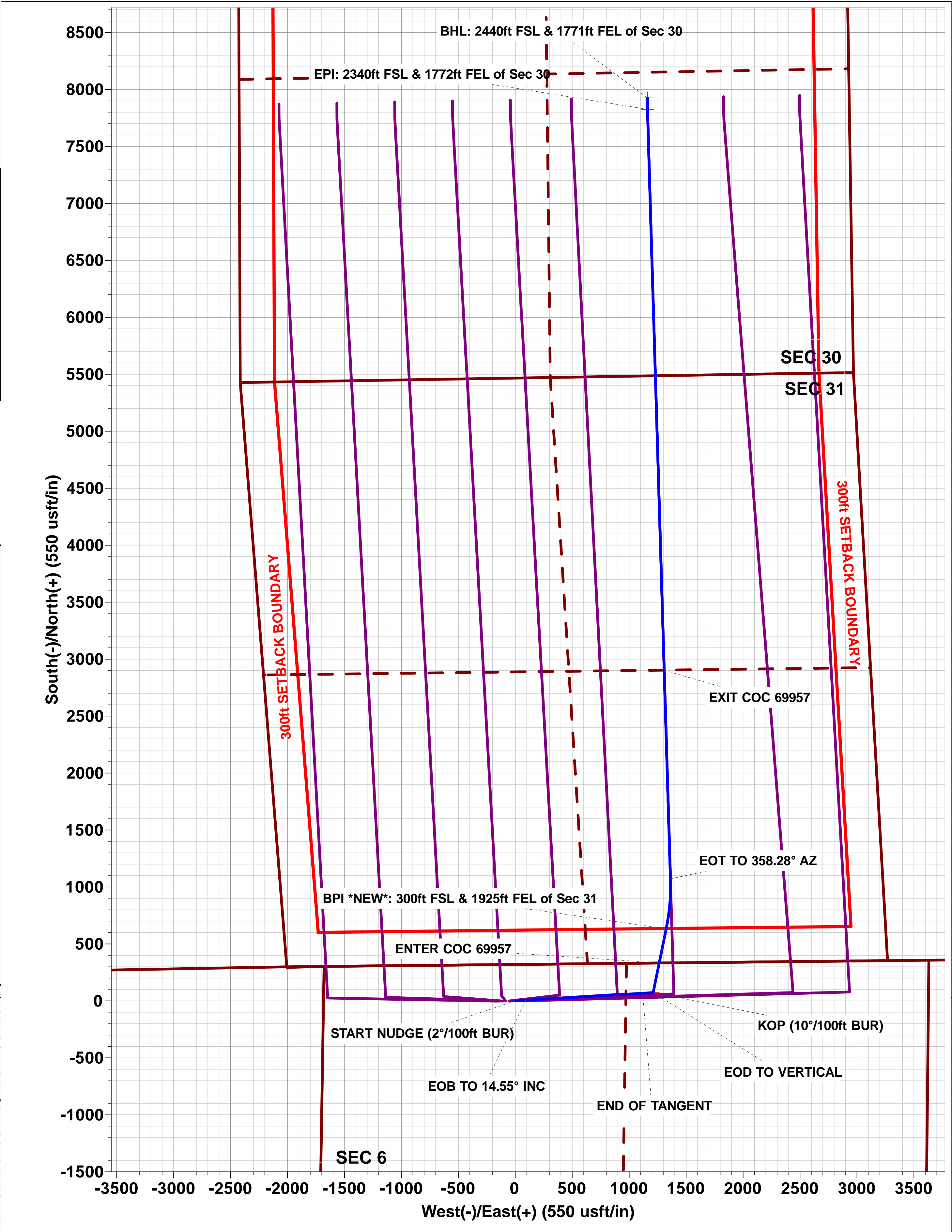
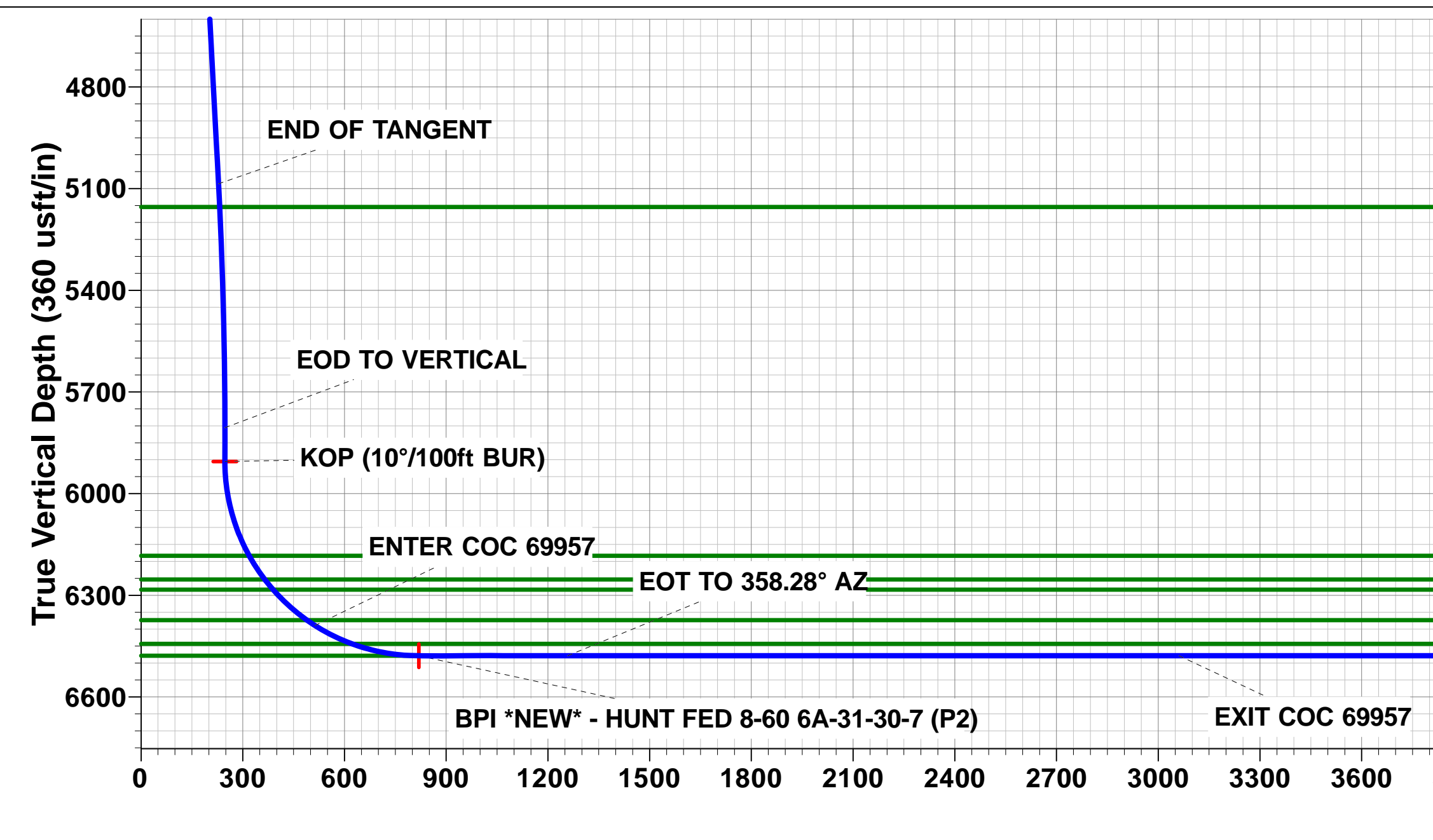
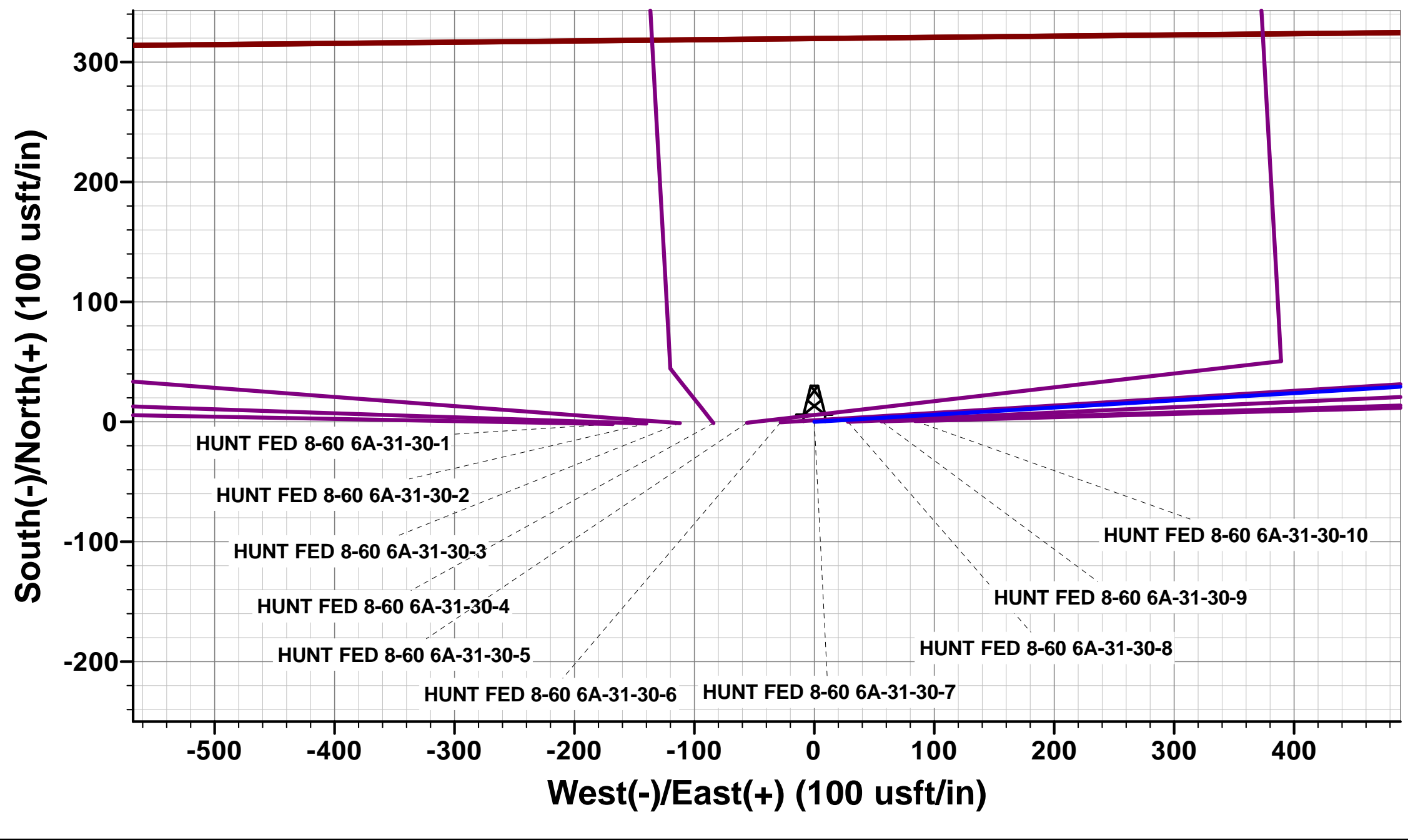
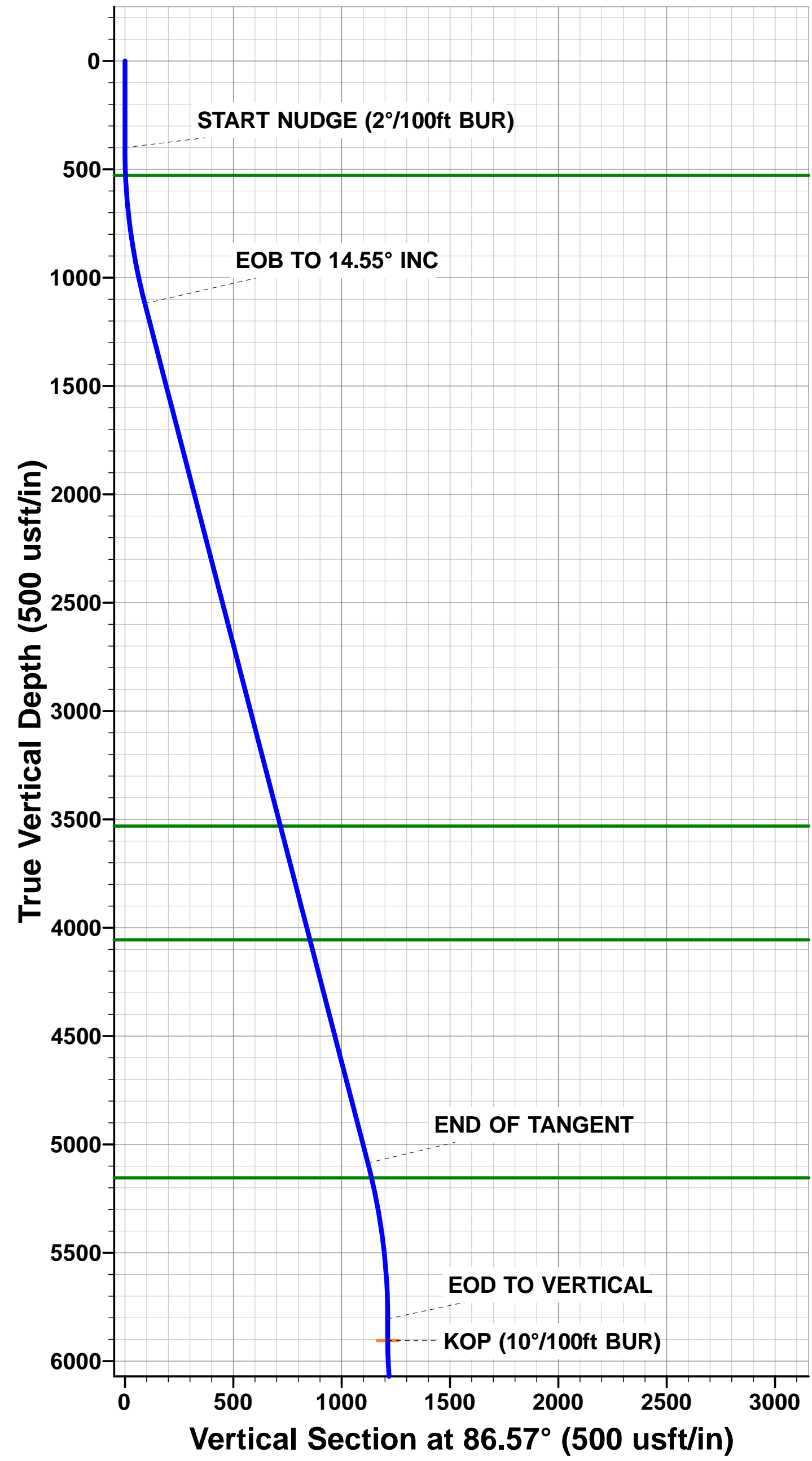


Project: WELD COUNTY, COLORADO (NAD 83)  
Site: NE NW SEC. 6 T8N R60W 6th P.M.  
Well: HUNT FED 8-60 6A-31-30-7  
Wellbore: ORIGINAL WELLBORE  
Design: PROPOSAL #2

ANNOTATIONS								
MD	Inc	Azi	TVD	+N/-S	+E/-W	VSect	Dep	Annotation
0.00	0.00	0.00	0.00	0.00	0.00	0.00	0.00	SHL: 318ft FNL & 1684ft FWL of Sec 6
400.00	0.00	0.00	400.00	0.00	0.00	0.00	0.00	START NUDGE (2°/100ft BUR)
1127.40	14.55	86.57	1119.61	5.49	91.69	18.72	91.85	EOB TO 14.55° INC
5225.00	14.55	86.57	5085.83	67.03	1119.13	228.48	1121.14	END OF TANGENT
5952.40	0.00	0.00	5805.44	72.52	1210.82	247.20	1212.99	EOD TO VERTICAL
6052.40	0.00	0.00	5905.44	72.52	1210.82	247.20	1212.99	KOP (10°/100ft BUR)
6628.42	57.60	11.50	6389.21	333.15	1263.84	512.76	1479.24	ENTER COC 69957
6952.41	90.00	11.50	6478.40	633.98	1325.05	819.28	1785.95	BPI *NEW*: 300ft FSL & 1925ft FEL of Sec 31
7393.07	90.00	358.28	6478.40	1072.06	1362.53	1258.18	2226.61	EOT TO 358.28° AZ
9224.13	90.00	358.28	6478.40	2902.30	1307.71	3061.16	4057.67	EXIT COC 69957
14149.89	90.00	359.84	6478.40	7825.87	1160.92	7911.50	8983.43	EPI: 2340ft FSL & 1772ft FEL of Sec 30
14249.72	90.00	359.84	6478.40	7925.70	1160.64	8010.23	9083.26	BHL: 2440ft FSL & 1771ft FEL of Sec 30

PROPOSED LOCAL COORDINATES:  
  
SHL: 318ft FNL & 1684ft FWL Sec 6  
  
BPI : 300ft FSL & 1925ft FEL Sec 31  
  
EPI: 2340ft FSL & 1772ft FEL Sec 30  
  
BHL: 2440ft FSL & 1771ft FEL of Sec 30

WELLBORE TARGET DETAILS (LAT/LONG)					
Name	TVD	+N/-S	+E/-W	Latitude	Longitude
KOP - HUNT FED 8-60 6A-31-30-7 (P2)	5905.44	72.52	1210.82	40.697882	-104.132843
BHL - HUNT FED 8-60 6A-31-30-7 (P2)	6478.40	7925.70	1160.64	40.719437	-104.133023
BPI *NEW* - HUNT FED 8-60 6A-31-30-7 (P2)	6478.40	633.98	1325.05	40.699423	-104.132431
EPI - HUNT FED 8-60 6A-31-30-7 (P2)	6478.40	7825.87	1160.92	40.719163	-104.133022



# Planning Report

<b>Database:</b>	EDM 5000.15.1	<b>Local Co-ordinate Reference:</b>	Well HUNT FED 8-60 6A-31-30-7
<b>Company:</b>	BISON OIL & GAS II, LLC	<b>TVD Reference:</b>	KB 25' @ 4948.40usft
<b>Project:</b>	WELD COUNTY, COLORADO (NAD 83)	<b>MD Reference:</b>	KB 25' @ 4948.40usft
<b>Site:</b>	NE NW SEC. 6 T8N R60W 6th P.M.	<b>North Reference:</b>	True
<b>Well:</b>	HUNT FED 8-60 6A-31-30-7	<b>Survey Calculation Method:</b>	Minimum Curvature
<b>Wellbore:</b>	ORIGINAL WELLBORE		
<b>Design:</b>	PROPOSAL #2		

<b>Project</b>	WELD COUNTY, COLORADO (NAD 83)		
<b>Map System:</b>	US State Plane 1983	<b>System Datum:</b>	Mean Sea Level
<b>Geo Datum:</b>	North American Datum 1983		
<b>Map Zone:</b>	Colorado Northern Zone		Using geodetic scale factor

<b>Site</b>	NE NW SEC. 6 T8N R60W 6th P.M.		
<b>Site Position:</b>		<b>Northing:</b>	1,499,148.34 usft
<b>From:</b>	Lat/Long	<b>Easting:</b>	3,378,394.93 usft
<b>Position Uncertainty:</b>	0.00 usft	<b>Slot Radius:</b>	1.10000ft
		<b>Latitude:</b>	40.695562
		<b>Longitude:</b>	-104.135358
		<b>Grid Convergence:</b>	0.88 °

<b>Well</b>	HUNT FED 8-60 6A-31-30-7		
<b>Well Position</b>	<b>+N/-S</b>	772.74 usft	<b>Northing:</b>
	<b>+E/-W</b>	-513.54 usft	<b>Easting:</b>
<b>Position Uncertainty</b>	0.00 usft		<b>Wellhead Elevation:</b>
			<b>Latitude:</b>
			<b>Longitude:</b>
			<b>Ground Level:</b>

<b>Wellbore</b>	ORIGINAL WELLBORE				
<b>Magnetics</b>	<b>Model Name</b>	<b>Sample Date</b>	<b>Declination (°)</b>	<b>Dip Angle (°)</b>	<b>Field Strength (nT)</b>
	IGRF2020	2020-03-23	7.67	67.03	52,301.22231822

<b>Design</b>	PROPOSAL #2			
<b>Audit Notes:</b>				
<b>Version:</b>	<b>Phase:</b>	PROTOTYPE	<b>Tie On Depth:</b>	0.00
<b>Vertical Section:</b>	<b>Depth From (TVD) (usft)</b>	<b>+N/-S (usft)</b>	<b>+E/-W (usft)</b>	<b>Direction (°)</b>
	0.00	0.00	0.00	8.33

<b>Plan Sections</b>											
MD (usft)	Inc (°)	Azi (°)	Vertical Depth	SS (usft)	+N/-S (usft)	+E/-W (usft)	Dogleg Rate (°/100usf)	Build Rate (°/100usf)	Turn Rate (°/100usf)	TFO (°)	Target
0.00	0.00	0.00	0.00	-4,948.40	0.00	0.00	0.00	0.00	0.00	0.00	
400.00	0.00	0.00	400.00	-4,548.40	0.00	0.00	0.00	0.00	0.00	0.00	
1,127.40	14.55	86.57	1,119.61	-3,828.79	5.49	91.69	2.00	2.00	0.00	86.57	
5,225.00	14.55	86.57	5,085.83	137.43	67.03	1,119.13	0.00	0.00	0.00	0.00	
5,952.40	0.00	0.00	5,805.44	857.04	72.52	1,210.82	2.00	-2.00	0.00	180.00	
6,052.40	0.00	0.00	5,905.44	957.04	72.52	1,210.82	0.00	0.00	0.00	0.00	KOP - HUNT FED 8-
6,952.41	90.00	11.50	6,478.40	1,530.00	633.98	1,325.05	10.00	10.00	1.28	11.50	BPI *NEW* - HUNT
7,393.07	90.00	358.28	6,478.40	1,530.00	1,072.07	1,362.53	3.00	0.00	-3.00	-90.00	
7,393.22	90.00	358.28	6,478.40	1,530.00	1,072.21	1,362.53	3.00	-0.25	2.99	94.83	
14,098.10	90.00	358.28	6,478.40	1,530.00	7,774.08	1,161.77	0.00	0.00	0.00	0.00	
14,149.89	90.00	359.84	6,478.40	1,530.00	7,825.87	1,160.92	3.00	0.00	3.00	90.00	EPI - HUNT FED 8-
14,249.72	90.00	359.84	6,478.40	1,530.00	7,925.70	1,160.64	0.00	0.00	0.00	0.00	BHL - HUNT FED 8

# Planning Report

<b>Database:</b>	EDM 5000.15.1	<b>Local Co-ordinate Reference:</b>	Well HUNT FED 8-60 6A-31-30-7
<b>Company:</b>	BISON OIL & GAS II, LLC	<b>TVD Reference:</b>	KB 25' @ 4948.40usft
<b>Project:</b>	WELD COUNTY, COLORADO (NAD 83)	<b>MD Reference:</b>	KB 25' @ 4948.40usft
<b>Site:</b>	NE NW SEC. 6 T8N R60W 6th P.M.	<b>North Reference:</b>	True
<b>Well:</b>	HUNT FED 8-60 6A-31-30-7	<b>Survey Calculation Method:</b>	Minimum Curvature
<b>Wellbore:</b>	ORIGINAL WELLBORE		
<b>Design:</b>	PROPOSAL #2		

Planned Survey										
MD (usft)	Inc (°)	Azi (°)	TVD (usft)	SS (usft)	+N/-S (usft)	+E/-W (usft)	Vertical Section (usft)	Dogleg Rate (°/100usft)	Build Rate (°/100usft)	Turn Rate (°/100usft)
<b>SHL: 318ft FNL &amp; 1684ft FWL of Sec 6</b>										
0.00	0.00	0.00	0.00	4,948.40	0.00	0.00	0.00	0.00	0.00	0.00
100.00	0.00	0.00	100.00	4,848.40	0.00	0.00	0.00	0.00	0.00	0.00
200.00	0.00	0.00	200.00	4,748.40	0.00	0.00	0.00	0.00	0.00	0.00
300.00	0.00	0.00	300.00	4,648.40	0.00	0.00	0.00	0.00	0.00	0.00
<b>START NUDGE (2°/100ft BUR)</b>										
400.00	0.00	0.00	400.00	4,548.40	0.00	0.00	0.00	0.00	0.00	0.00
500.00	2.00	86.57	499.98	4,448.42	0.10	1.74	0.36	2.00	2.00	0.00
<b>PIERRE SHALE (BASE FOX HILLS)</b>										
528.44	2.57	86.57	528.40	4,420.00	0.17	2.87	0.59	2.00	2.00	0.00
600.00	4.00	86.57	599.84	4,348.56	0.42	6.97	1.42	2.00	2.00	0.00
700.00	6.00	86.57	699.45	4,248.95	0.94	15.67	3.20	2.00	2.00	0.00
800.00	8.00	86.57	798.70	4,149.70	1.67	27.83	5.68	2.00	2.00	0.00
900.00	10.00	86.57	897.47	4,050.93	2.60	43.44	8.87	2.00	2.00	0.00
1,000.00	12.00	86.57	995.62	3,952.78	3.74	62.49	12.76	2.00	2.00	0.00
1,100.00	14.00	86.57	1,093.06	3,855.34	5.09	84.94	17.34	2.00	2.00	0.00
<b>EOB TO 14.55° INC</b>										
1,127.40	14.55	86.57	1,119.61	3,828.79	5.49	91.69	18.72	2.00	2.00	0.00
1,200.00	14.55	86.57	1,189.88	3,758.52	6.58	109.89	22.44	0.00	0.00	0.00
1,300.00	14.55	86.57	1,286.68	3,661.72	8.08	134.97	27.55	0.00	0.00	0.00
1,400.00	14.55	86.57	1,383.47	3,564.93	9.59	160.04	32.67	0.00	0.00	0.00
1,500.00	14.55	86.57	1,480.26	3,468.14	11.09	185.11	37.79	0.00	0.00	0.00
1,600.00	14.55	86.57	1,577.06	3,371.34	12.59	210.19	42.91	0.00	0.00	0.00
1,700.00	14.55	86.57	1,673.85	3,274.55	14.09	235.26	48.03	0.00	0.00	0.00
1,800.00	14.55	86.57	1,770.64	3,177.76	15.59	260.34	53.15	0.00	0.00	0.00
1,900.00	14.55	86.57	1,867.44	3,080.96	17.09	285.41	58.27	0.00	0.00	0.00
2,000.00	14.55	86.57	1,964.23	2,984.17	18.60	310.49	63.39	0.00	0.00	0.00
2,100.00	14.55	86.57	2,061.02	2,887.38	20.10	335.56	68.51	0.00	0.00	0.00
2,200.00	14.55	86.57	2,157.82	2,790.58	21.60	360.63	73.63	0.00	0.00	0.00
2,300.00	14.55	86.57	2,254.61	2,693.79	23.10	385.71	78.74	0.00	0.00	0.00
2,400.00	14.55	86.57	2,351.41	2,596.99	24.60	410.78	83.86	0.00	0.00	0.00
2,500.00	14.55	86.57	2,448.20	2,500.20	26.10	435.86	88.98	0.00	0.00	0.00
2,600.00	14.55	86.57	2,544.99	2,403.41	27.61	460.93	94.10	0.00	0.00	0.00
2,700.00	14.55	86.57	2,641.79	2,306.61	29.11	486.01	99.22	0.00	0.00	0.00
2,800.00	14.55	86.57	2,738.58	2,209.82	30.61	511.08	104.34	0.00	0.00	0.00
2,900.00	14.55	86.57	2,835.37	2,113.03	32.11	536.15	109.46	0.00	0.00	0.00
3,000.00	14.55	86.57	2,932.17	2,016.23	33.61	561.23	114.58	0.00	0.00	0.00
3,100.00	14.55	86.57	3,028.96	1,919.44	35.12	586.30	119.70	0.00	0.00	0.00
3,200.00	14.55	86.57	3,125.76	1,822.64	36.62	611.38	124.82	0.00	0.00	0.00
3,300.00	14.55	86.57	3,222.55	1,725.85	38.12	636.45	129.94	0.00	0.00	0.00
3,400.00	14.55	86.57	3,319.34	1,629.06	39.62	661.53	135.05	0.00	0.00	0.00
3,500.00	14.55	86.57	3,416.14	1,532.26	41.12	686.60	140.17	0.00	0.00	0.00
3,600.00	14.55	86.57	3,512.93	1,435.47	42.62	711.67	145.29	0.00	0.00	0.00
<b>PARKMAN</b>										
3,619.08	14.55	86.57	3,531.40	1,417.00	42.91	716.46	146.27	0.00	0.00	0.00
3,700.00	14.55	86.57	3,609.72	1,338.68	44.13	736.75	150.41	0.00	0.00	0.00
3,800.00	14.55	86.57	3,706.52	1,241.88	45.63	761.82	155.53	0.00	0.00	0.00
3,900.00	14.55	86.57	3,803.31	1,145.09	47.13	786.90	160.65	0.00	0.00	0.00
4,000.00	14.55	86.57	3,900.11	1,048.29	48.63	811.97	165.77	0.00	0.00	0.00
4,100.00	14.55	86.57	3,996.90	951.50	50.13	837.05	170.89	0.00	0.00	0.00
<b>SUSSEX</b>										
4,161.47	14.55	86.57	4,056.40	892.00	51.06	852.46	174.03	0.00	0.00	0.00
4,200.00	14.55	86.57	4,093.69	854.71	51.64	862.12	176.01	0.00	0.00	0.00

# Planning Report

<b>Database:</b>	EDM 5000.15.1	<b>Local Co-ordinate Reference:</b>	Well HUNT FED 8-60 6A-31-30-7
<b>Company:</b>	BISON OIL & GAS II, LLC	<b>TVD Reference:</b>	KB 25' @ 4948.40usft
<b>Project:</b>	WELD COUNTY, COLORADO (NAD 83)	<b>MD Reference:</b>	KB 25' @ 4948.40usft
<b>Site:</b>	NE NW SEC. 6 T8N R60W 6th P.M.	<b>North Reference:</b>	True
<b>Well:</b>	HUNT FED 8-60 6A-31-30-7	<b>Survey Calculation Method:</b>	Minimum Curvature
<b>Wellbore:</b>	ORIGINAL WELLBORE		
<b>Design:</b>	PROPOSAL #2		

Planned Survey										
MD (usft)	Inc (°)	Azi (°)	TVD (usft)	SS (usft)	+N/-S (usft)	+E/-W (usft)	Vertical Section (usft)	Dogleg Rate (°/100usft)	Build Rate (°/100usft)	Turn Rate (°/100usft)
4,300.00	14.55	86.57	4,190.49	757.91	53.14	887.19	181.13	0.00	0.00	0.00
4,400.00	14.55	86.57	4,287.28	661.12	54.64	912.27	186.25	0.00	0.00	0.00
4,500.00	14.55	86.57	4,384.07	564.33	56.14	937.34	191.36	0.00	0.00	0.00
4,600.00	14.55	86.57	4,480.87	467.53	57.64	962.42	196.48	0.00	0.00	0.00
4,700.00	14.55	86.57	4,577.66	370.74	59.14	987.49	201.60	0.00	0.00	0.00
4,800.00	14.55	86.57	4,674.46	273.94	60.65	1,012.57	206.72	0.00	0.00	0.00
4,900.00	14.55	86.57	4,771.25	177.15	62.15	1,037.64	211.84	0.00	0.00	0.00
5,000.00	14.55	86.57	4,868.04	80.36	63.65	1,062.71	216.96	0.00	0.00	0.00
5,100.00	14.55	86.57	4,964.84	-16.44	65.15	1,087.79	222.08	0.00	0.00	0.00
5,200.00	14.55	86.57	5,061.63	-113.23	66.65	1,112.86	227.20	0.00	0.00	0.00
END OF TANGENT										
5,225.00	14.55	86.57	5,085.83	-137.43	67.03	1,119.13	228.48	0.00	0.00	0.00
SHANNON										
5,295.62	13.14	86.57	5,154.40	-206.00	68.04	1,136.00	231.92	2.00	-2.00	0.00
5,300.00	13.05	86.57	5,158.66	-210.26	68.10	1,136.99	232.12	2.00	-2.00	0.00
5,400.00	11.05	86.57	5,256.45	-308.05	69.35	1,157.82	236.38	2.00	-2.00	0.00
5,500.00	9.05	86.57	5,354.92	-406.52	70.39	1,175.24	239.93	2.00	-2.00	0.00
5,600.00	7.05	86.57	5,453.93	-505.53	71.23	1,189.21	242.78	2.00	-2.00	0.00
5,700.00	5.05	86.57	5,553.36	-604.96	71.86	1,199.73	244.93	2.00	-2.00	0.00
5,800.00	3.05	86.57	5,653.11	-704.71	72.28	1,206.77	246.37	2.00	-2.00	0.00
5,900.00	1.05	86.57	5,753.04	-804.64	72.49	1,210.34	247.10	2.00	-2.00	0.00
EOD TO VERTICAL										
5,952.40	0.00	0.00	5,805.44	-857.04	72.52	1,210.82	247.20	2.00	-2.00	-165.21
6,000.00	0.00	0.00	5,853.04	-904.64	72.52	1,210.82	247.20	0.00	0.00	0.00
KOP (10°/100ft BUR)										
6,052.40	0.00	0.00	5,905.44	-957.04	72.52	1,210.82	247.20	0.00	0.00	0.00
6,100.00	4.76	11.50	5,952.98	-1,004.58	74.46	1,211.21	249.17	10.00	10.00	0.00
6,200.00	14.76	11.50	6,051.41	-1,103.01	91.05	1,214.59	266.07	10.00	10.00	0.00
6,300.00	24.76	11.50	6,145.40	-1,197.00	124.13	1,221.32	299.79	10.00	10.00	0.00
SHARON SPRINGS SHALE										
6,342.61	29.02	11.50	6,183.40	-1,235.00	143.02	1,225.16	319.03	10.00	10.00	0.00
6,400.00	34.76	11.50	6,232.10	-1,283.70	172.71	1,231.20	349.28	10.00	10.00	0.00
NIOBRARA FORMATION										
6,426.35	37.39	11.50	6,253.40	-1,305.00	187.92	1,234.30	364.78	10.00	10.00	0.00
NIOBRARA A CHALK										
6,465.14	41.27	11.50	6,283.40	-1,335.00	212.01	1,239.20	389.32	10.00	10.00	0.00
6,500.00	44.76	11.50	6,308.88	-1,360.48	235.31	1,243.94	413.06	10.00	10.00	0.00
NIOBRARA B CHALK										
6,600.00	54.76	11.50	6,373.40	-1,425.00	310.01	1,259.14	489.19	10.00	10.00	0.00
ENTER COC 69957										
6,628.42	57.60	11.50	6,389.21	-1,440.81	333.15	1,263.84	512.76	10.00	10.00	0.00
6,700.00	64.76	11.50	6,423.70	-1,475.30	394.56	1,276.34	575.33	10.00	10.00	0.00
NIOBRARA C CHALK										
6,751.10	69.87	11.50	6,443.40	-1,495.00	440.75	1,285.74	622.40	10.00	10.00	0.00
6,800.00	74.76	11.50	6,458.25	-1,509.85	486.39	1,295.02	668.90	10.00	10.00	0.00
6,900.00	84.76	11.50	6,476.01	-1,527.61	582.70	1,314.62	767.03	10.00	10.00	0.00
BPI *NEW*: 300ft FSL & 1925ft FEL of Sec 31 - NIOBRARA C CHALK LP										
6,952.41	90.00	11.50	6,478.40	-1,530.00	633.98	1,325.05	819.28	10.00	10.00	0.00
7,000.00	90.00	10.07	6,478.40	-1,530.00	680.73	1,333.96	866.83	3.00	0.00	-3.00
7,100.00	90.00	7.07	6,478.40	-1,530.00	779.60	1,348.86	966.82	3.00	0.00	-3.00
7,200.00	90.00	4.07	6,478.40	-1,530.00	879.12	1,358.57	1,066.69	3.00	0.00	-3.00
7,300.00	90.00	1.07	6,478.40	-1,530.00	979.01	1,363.06	1,166.17	3.00	0.00	-3.00

# Planning Report

<b>Database:</b>	EDM 5000.15.1	<b>Local Co-ordinate Reference:</b>	Well HUNT FED 8-60 6A-31-30-7
<b>Company:</b>	BISON OIL & GAS II, LLC	<b>TVD Reference:</b>	KB 25' @ 4948.40usft
<b>Project:</b>	WELD COUNTY, COLORADO (NAD 83)	<b>MD Reference:</b>	KB 25' @ 4948.40usft
<b>Site:</b>	NE NW SEC. 6 T8N R60W 6th P.M.	<b>North Reference:</b>	True
<b>Well:</b>	HUNT FED 8-60 6A-31-30-7	<b>Survey Calculation Method:</b>	Minimum Curvature
<b>Wellbore:</b>	ORIGINAL WELLBORE		
<b>Design:</b>	PROPOSAL #2		

Planned Survey										
MD (usft)	Inc (°)	Azi (°)	TVD (usft)	SS (usft)	+N/-S (usft)	+E/-W (usft)	Vertical Section (usft)	Dogleg Rate (°/100usft)	Build Rate (°/100usft)	Turn Rate (°/100usft)
<b>EOT TO 358.28° AZ</b>										
7,393.07	90.00	358.28	6,478.40	-1,530.00	1,072.06	1,362.53	1,258.18	3.00	0.00	-3.00
7,393.22	90.00	358.28	6,478.40	-1,530.00	1,072.21	1,362.53	1,258.32	2.84	-0.25	2.83
7,400.00	90.00	358.28	6,478.40	-1,530.00	1,078.99	1,362.32	1,265.00	0.00	0.00	0.00
7,500.00	90.00	358.28	6,478.40	-1,530.00	1,178.95	1,359.33	1,363.47	0.00	0.00	0.00
7,600.00	90.00	358.28	6,478.40	-1,530.00	1,278.90	1,356.33	1,461.93	0.00	0.00	0.00
7,700.00	90.00	358.28	6,478.40	-1,530.00	1,378.86	1,353.34	1,560.40	0.00	0.00	0.00
7,800.00	90.00	358.28	6,478.40	-1,530.00	1,478.81	1,350.35	1,658.87	0.00	0.00	0.00
7,900.00	90.00	358.28	6,478.40	-1,530.00	1,578.77	1,347.35	1,757.33	0.00	0.00	0.00
8,000.00	90.00	358.28	6,478.40	-1,530.00	1,678.72	1,344.36	1,855.80	0.00	0.00	0.00
8,100.00	90.00	358.28	6,478.40	-1,530.00	1,778.68	1,341.36	1,954.26	0.00	0.00	0.00
8,200.00	90.00	358.28	6,478.40	-1,530.00	1,878.63	1,338.37	2,052.73	0.00	0.00	0.00
8,300.00	90.00	358.28	6,478.40	-1,530.00	1,978.59	1,335.38	2,151.20	0.00	0.00	0.00
8,400.00	90.00	358.28	6,478.40	-1,530.00	2,078.54	1,332.38	2,249.66	0.00	0.00	0.00
8,500.00	90.00	358.28	6,478.40	-1,530.00	2,178.50	1,329.39	2,348.13	0.00	0.00	0.00
8,600.00	90.00	358.28	6,478.40	-1,530.00	2,278.45	1,326.39	2,446.60	0.00	0.00	0.00
8,700.00	90.00	358.28	6,478.40	-1,530.00	2,378.41	1,323.40	2,545.06	0.00	0.00	0.00
8,800.00	90.00	358.28	6,478.40	-1,530.00	2,478.36	1,320.40	2,643.53	0.00	0.00	0.00
8,900.00	90.00	358.28	6,478.40	-1,530.00	2,578.32	1,317.41	2,742.00	0.00	0.00	0.00
9,000.00	90.00	358.28	6,478.40	-1,530.00	2,678.27	1,314.42	2,840.46	0.00	0.00	0.00
9,100.00	90.00	358.28	6,478.40	-1,530.00	2,778.23	1,311.42	2,938.93	0.00	0.00	0.00
9,200.00	90.00	358.28	6,478.40	-1,530.00	2,878.18	1,308.43	3,037.40	0.00	0.00	0.00
<b>EXIT COC 69957</b>										
9,224.13	90.00	358.28	6,478.40	-1,530.00	2,902.30	1,307.71	3,061.16	0.00	0.00	0.00
9,300.00	90.00	358.28	6,478.40	-1,530.00	2,978.14	1,305.43	3,135.86	0.00	0.00	0.00
9,400.00	90.00	358.28	6,478.40	-1,530.00	3,078.10	1,302.44	3,234.33	0.00	0.00	0.00
9,500.00	90.00	358.28	6,478.40	-1,530.00	3,178.05	1,299.45	3,332.80	0.00	0.00	0.00
9,600.00	90.00	358.28	6,478.40	-1,530.00	3,278.01	1,296.45	3,431.26	0.00	0.00	0.00
9,700.00	90.00	358.28	6,478.40	-1,530.00	3,377.96	1,293.46	3,529.73	0.00	0.00	0.00
9,800.00	90.00	358.28	6,478.40	-1,530.00	3,477.92	1,290.46	3,628.20	0.00	0.00	0.00
9,900.00	90.00	358.28	6,478.40	-1,530.00	3,577.87	1,287.47	3,726.66	0.00	0.00	0.00
10,000.00	90.00	358.28	6,478.40	-1,530.00	3,677.83	1,284.48	3,825.13	0.00	0.00	0.00
10,100.00	90.00	358.28	6,478.40	-1,530.00	3,777.78	1,281.48	3,923.59	0.00	0.00	0.00
10,200.00	90.00	358.28	6,478.40	-1,530.00	3,877.74	1,278.49	4,022.06	0.00	0.00	0.00
10,300.00	90.00	358.28	6,478.40	-1,530.00	3,977.69	1,275.49	4,120.53	0.00	0.00	0.00
10,400.00	90.00	358.28	6,478.40	-1,530.00	4,077.65	1,272.50	4,218.99	0.00	0.00	0.00
10,500.00	90.00	358.28	6,478.40	-1,530.00	4,177.60	1,269.50	4,317.46	0.00	0.00	0.00
10,600.00	90.00	358.28	6,478.40	-1,530.00	4,277.56	1,266.51	4,415.93	0.00	0.00	0.00
10,700.00	90.00	358.28	6,478.40	-1,530.00	4,377.51	1,263.52	4,514.39	0.00	0.00	0.00
10,800.00	90.00	358.28	6,478.40	-1,530.00	4,477.47	1,260.52	4,612.86	0.00	0.00	0.00
10,900.00	90.00	358.28	6,478.40	-1,530.00	4,577.42	1,257.53	4,711.33	0.00	0.00	0.00
11,000.00	90.00	358.28	6,478.40	-1,530.00	4,677.38	1,254.53	4,809.79	0.00	0.00	0.00
11,100.00	90.00	358.28	6,478.40	-1,530.00	4,777.33	1,251.54	4,908.26	0.00	0.00	0.00
11,200.00	90.00	358.28	6,478.40	-1,530.00	4,877.29	1,248.55	5,006.73	0.00	0.00	0.00
11,300.00	90.00	358.28	6,478.40	-1,530.00	4,977.24	1,245.55	5,105.19	0.00	0.00	0.00
11,400.00	90.00	358.28	6,478.40	-1,530.00	5,077.20	1,242.56	5,203.66	0.00	0.00	0.00
11,500.00	90.00	358.28	6,478.40	-1,530.00	5,177.15	1,239.56	5,302.13	0.00	0.00	0.00
11,600.00	90.00	358.28	6,478.40	-1,530.00	5,277.11	1,236.57	5,400.59	0.00	0.00	0.00
11,700.00	90.00	358.28	6,478.40	-1,530.00	5,377.06	1,233.58	5,499.06	0.00	0.00	0.00
11,800.00	90.00	358.28	6,478.40	-1,530.00	5,477.02	1,230.58	5,597.53	0.00	0.00	0.00
11,900.00	90.00	358.28	6,478.40	-1,530.00	5,576.97	1,227.59	5,695.99	0.00	0.00	0.00
12,000.00	90.00	358.28	6,478.40	-1,530.00	5,676.93	1,224.59	5,794.46	0.00	0.00	0.00
12,100.00	90.00	358.28	6,478.40	-1,530.00	5,776.88	1,221.60	5,892.92	0.00	0.00	0.00
12,200.00	90.00	358.28	6,478.40	-1,530.00	5,876.84	1,218.60	5,991.39	0.00	0.00	0.00

# Planning Report

<b>Database:</b>	EDM 5000.15.1	<b>Local Co-ordinate Reference:</b>	Well HUNT FED 8-60 6A-31-30-7
<b>Company:</b>	BISON OIL & GAS II, LLC	<b>TVD Reference:</b>	KB 25' @ 4948.40usft
<b>Project:</b>	WELD COUNTY, COLORADO (NAD 83)	<b>MD Reference:</b>	KB 25' @ 4948.40usft
<b>Site:</b>	NE NW SEC. 6 T8N R60W 6th P.M.	<b>North Reference:</b>	True
<b>Well:</b>	HUNT FED 8-60 6A-31-30-7	<b>Survey Calculation Method:</b>	Minimum Curvature
<b>Wellbore:</b>	ORIGINAL WELLBORE		
<b>Design:</b>	PROPOSAL #2		

Planned Survey										
MD (usft)	Inc (°)	Azi (°)	TVD (usft)	SS (usft)	+N/-S (usft)	+E/-W (usft)	Vertical Section (usft)	Dogleg Rate (°/100usft)	Build Rate (°/100usft)	Turn Rate (°/100usft)
12,300.00	90.00	358.28	6,478.40	-1,530.00	5,976.80	1,215.61	6,089.86	0.00	0.00	0.00
12,400.00	90.00	358.28	6,478.40	-1,530.00	6,076.75	1,212.62	6,188.32	0.00	0.00	0.00
12,500.00	90.00	358.28	6,478.40	-1,530.00	6,176.71	1,209.62	6,286.79	0.00	0.00	0.00
12,600.00	90.00	358.28	6,478.40	-1,530.00	6,276.66	1,206.63	6,385.26	0.00	0.00	0.00
12,700.00	90.00	358.28	6,478.40	-1,530.00	6,376.62	1,203.63	6,483.72	0.00	0.00	0.00
12,800.00	90.00	358.28	6,478.40	-1,530.00	6,476.57	1,200.64	6,582.19	0.00	0.00	0.00
12,900.00	90.00	358.28	6,478.40	-1,530.00	6,576.53	1,197.65	6,680.66	0.00	0.00	0.00
13,000.00	90.00	358.28	6,478.40	-1,530.00	6,676.48	1,194.65	6,779.12	0.00	0.00	0.00
13,100.00	90.00	358.28	6,478.40	-1,530.00	6,776.44	1,191.66	6,877.59	0.00	0.00	0.00
13,200.00	90.00	358.28	6,478.40	-1,530.00	6,876.39	1,188.66	6,976.06	0.00	0.00	0.00
13,300.00	90.00	358.28	6,478.40	-1,530.00	6,976.35	1,185.67	7,074.52	0.00	0.00	0.00
13,400.00	90.00	358.28	6,478.40	-1,530.00	7,076.30	1,182.68	7,172.99	0.00	0.00	0.00
13,500.00	90.00	358.28	6,478.40	-1,530.00	7,176.26	1,179.68	7,271.46	0.00	0.00	0.00
13,600.00	90.00	358.28	6,478.40	-1,530.00	7,276.21	1,176.69	7,369.92	0.00	0.00	0.00
13,700.00	90.00	358.28	6,478.40	-1,530.00	7,376.17	1,173.69	7,468.39	0.00	0.00	0.00
13,800.00	90.00	358.28	6,478.40	-1,530.00	7,476.12	1,170.70	7,566.86	0.00	0.00	0.00
13,900.00	90.00	358.28	6,478.40	-1,530.00	7,576.08	1,167.70	7,665.32	0.00	0.00	0.00
14,000.00	90.00	358.28	6,478.40	-1,530.00	7,676.03	1,164.71	7,763.79	0.00	0.00	0.00
14,098.10	90.00	358.28	6,478.40	-1,530.00	7,774.08	1,161.77	7,860.38	0.00	0.00	0.00
14,100.00	90.00	358.34	6,478.40	-1,530.00	7,775.99	1,161.72	7,862.26	3.00	0.00	3.00
<b>EPI: 2340ft FSL &amp; 1772ft FEL of Sec 30</b>										
<b>14,149.89</b>	<b>90.00</b>	<b>359.84</b>	<b>6,478.40</b>	<b>-1,530.00</b>	<b>7,825.87</b>	<b>1,160.92</b>	<b>7,911.50</b>	<b>3.00</b>	<b>0.00</b>	<b>3.00</b>
14,200.00	90.00	359.84	6,478.40	-1,530.00	7,875.98	1,160.78	7,961.06	0.00	0.00	0.00
<b>BHL: 2440ft FSL &amp; 1771ft FEL of Sec 30</b>										
<b>14,249.72</b>	<b>90.00</b>	<b>359.84</b>	<b>6,478.40</b>	<b>-1,530.00</b>	<b>7,925.70</b>	<b>1,160.64</b>	<b>8,010.23</b>	<b>0.00</b>	<b>0.00</b>	<b>0.00</b>

Formations						
MD (usft)	TVD (usft)	Name	Lithology	Dip (°)	Dip Direction (°)	
528.44	528.40	PIERRE SHALE (BASE FOX HILLS				
3,619.08	3,531.40	PARKMAN				
4,161.47	4,056.40	SUSSEX				
5,295.62	5,154.40	SHANNON				
6,342.61	6,183.40	SHARON SPRINGS SHALE				
6,426.35	6,253.40	NIOBRARA FORMATION				
6,465.14	6,283.40	NIOBRARA A CHALK				
6,600.00	6,373.40	NIOBRARA B CHALK				
6,751.10	6,443.40	NIOBRARA C CHALK				
6,952.41	6,478.40	NIOBRARA C CHALK LP				

# Planning Report

<b>Database:</b>	EDM 5000.15.1	<b>Local Co-ordinate Reference:</b>	Well HUNT FED 8-60 6A-31-30-7
<b>Company:</b>	BISON OIL & GAS II, LLC	<b>TVD Reference:</b>	KB 25' @ 4948.40usft
<b>Project:</b>	WELD COUNTY, COLORADO (NAD 83)	<b>MD Reference:</b>	KB 25' @ 4948.40usft
<b>Site:</b>	NE NW SEC. 6 T8N R60W 6th P.M.	<b>North Reference:</b>	True
<b>Well:</b>	HUNT FED 8-60 6A-31-30-7	<b>Survey Calculation Method:</b>	Minimum Curvature
<b>Wellbore:</b>	ORIGINAL WELLBORE		
<b>Design:</b>	PROPOSAL #2		

Plan Annotations				
Local Coordinates				
MD (usft)	TVD (usft)	+N/-S (usft)	+E/-W (usft)	Comment
0.00	0.00	0.00	0.00	SHL: 318ft FNL & 1684ft FWL of Sec 6
400.00	400.00	0.00	0.00	START NUDGE (2°/100ft BUR)
1,127.40	1,119.61	5.49	91.69	EOB TO 14.55° INC
5,225.00	5,085.83	67.03	1,119.13	END OF TANGENT
5,952.40	5,805.44	72.52	1,210.82	EOD TO VERTICAL
6,052.40	5,905.44	72.52	1,210.82	KOP (10°/100ft BUR)
6,628.42	6,389.21	333.15	1,263.84	ENTER COC 69957
6,952.41	6,478.40	633.98	1,325.05	BPI *NEW*: 300ft FSL & 1925ft FEL of Sec 31
7,393.07	6,478.40	1,072.06	1,362.53	EOT TO 358.28° AZ
9,224.13	6,478.40	2,902.30	1,307.71	EXIT COC 69957
14,149.89	6,478.40	7,825.87	1,160.92	EPI: 2340ft FSL & 1772ft FEL of Sec 30
14,249.72	6,478.40	7,925.70	1,160.64	BHL: 2440ft FSL & 1771ft FEL of Sec 30