

KTM Operating LLC, Craig 6-4 SWD  
073-06391

Inspection #688307463

3/25/2020

Routine Inspection

**KTM**  
OPERATING

337-654-9404  
1246 Bayou Lacarpe Rd.  
Houma, LA 70363

Craig 6-4 SWD

SE NW Sec 4, T14S, R55W  
2,326' FNL 2,111' FWL

Lincoln County, Colorado

API 05-073-06391

Emergency Phone  
for 911

Colorado Oil and Gas Conservation Commission

38.85898, -103.56355, 5023.0ft, 88

03/25/2020 02:14:51 PM



Colorado Oil and Gas Conservation Commission  
38.85893, -103.56358, 5026.2ft, 22°  
03/25/2020 02:14:27 PM





Colorado Oil and Gas Conservation Commission  
38.85898, -103.56354, 5026.2ft, 1°  
03/25/2020 02:14:58 PM

# MC-II FLOW ANALYZER

048543

TOTAL (BBLS)

000.000

RATE (BPD)

CALIBRATION

ACCESS

DEC.  
POINT

INCRE-  
MENT

ENTER  
STEP


VIEW  
DIV.

RESET

Colorado Oil and Gas Conservation Commission

38.85898, -103.56354, 5026.2ft, 325°

03/25/2020 02:15:05 PM

 NuFlo





Colorado Oil and Gas Conservation Commission  
38.85898, -103.56354, 5029.5ft, 264°  
03/25/2020 02:15:12 PM



Colorado Oil and Gas Conservation Commission  
38.85898, -103.56354, 5029.5ft, 39°  
03/25/2020 02:15:17 PM





Colorado Oil and Gas Conservation Commission  
38.85898, -103.56354, 5029.5ft, 60°  
03/25/2020 02:15:20 PM



**KTM**  
OPERATING

337-654-9404

1246 Bayou Lacarpe Rd.  
Houma, LA 70363

**Craig 6-4 SWD Facility**

**SE NW Sec 4, T14S, R55W**

**Lat. 38.858570 Long. 103.563450**

**Lincoln County, Colorado**

**API 05-073-06391**

**Facility ID 414278**

**Emergency Phone**

**[REDACTED] or 911**

Colorado Oil and Gas Conservation Commission

38.85869, -103.56362, 5029.5ft, 50°

03/25/2020 02:11:49 PM



Colorado Oil and Gas Conservation Commission

38.85868, -103.56362, 5036.1ft, 89°

03/25/2020 02:11:55 PM





Emergency Phone 303-638-6096 or 911

Nighthawk Production LLC

400 BBL Water



400 BBL

PRODUCED WATER

Colorado Oil and Gas Conservation Commission

38.8587, -103.5636, 5019.7ft, 59°

03/25/2020 02:12:13 PM



Colorado Oil and Gas Conservation Commission

38.85884, -103.56354, 5026.2ft, 167°

03/25/2020 02:12:42 PM





Colorado Oil and Gas Conservation Commission

38.85883, -103.56355, 5026.2ft, 162°

03/25/2020 02:12:49 PM

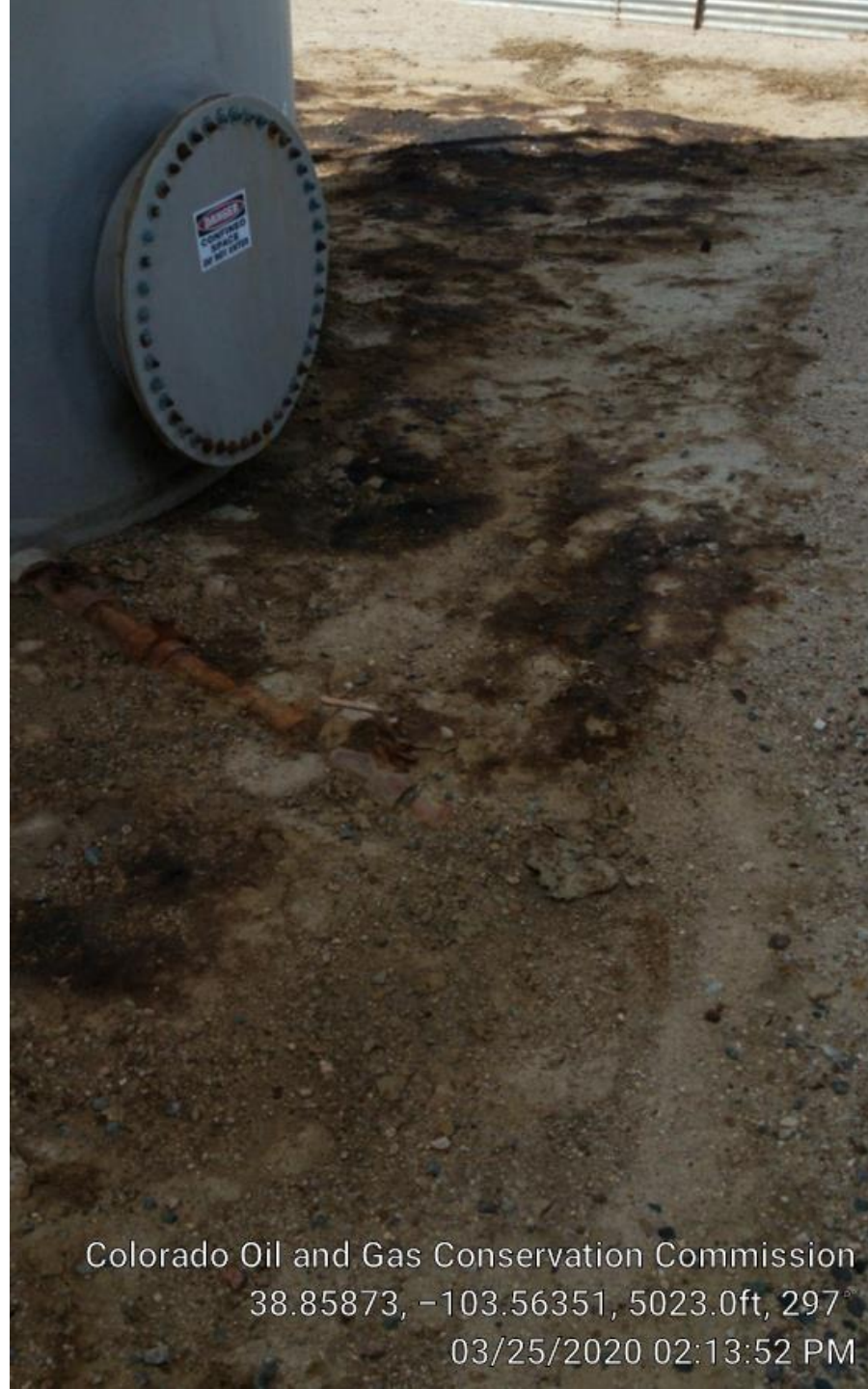




Colorado Oil and Gas Conservation Commission  
38.85873, -103.56351, 5023.0ft, 178°  
03/25/2020 02:13:46 PM



Colorado Oil and Gas Conservation Commission  
38.85873, -103.56351, 5023.0ft, 210°  
03/25/2020 02:13:49 PM



Colorado Oil and Gas Conservation Commission  
38.85873, -103.56351, 5023.0ft, 297°  
03/25/2020 02:13:52 PM





Colorado Oil and Gas Conservation Commission  
38.85872, -103.56359, 5019.7ft, 18°  
03/25/2020 02:13:25 PM