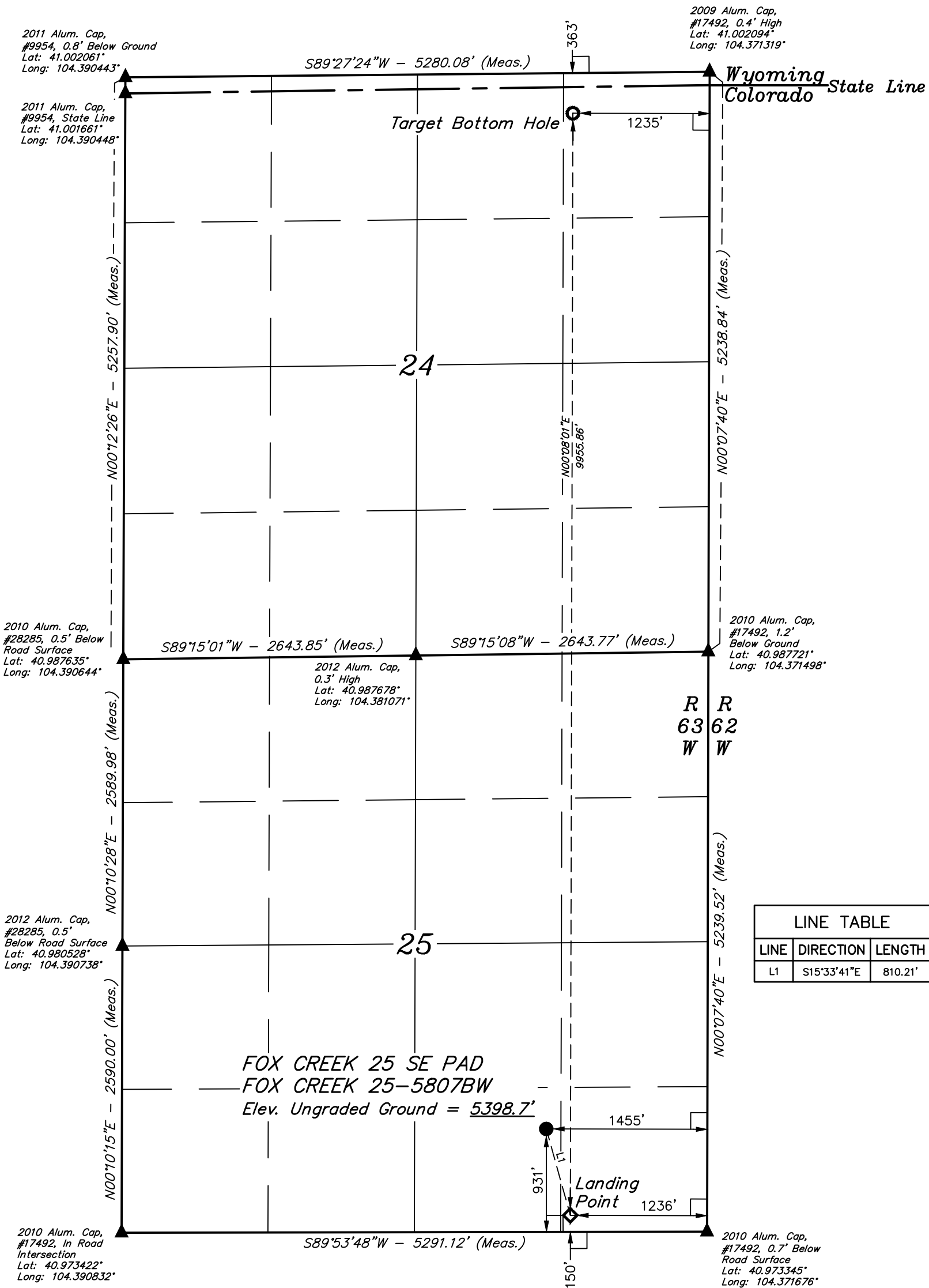


LEGEND:

- └─ = 90° SYMBOL  
● = PROPOSED WELLHEAD.  
◆ = LANDING POINT.  
○ = TARGET BOTTOM HOLE.  
▲ = SECTION CORNERS LOCATED. (NAD 83)  
△ = SECTION CORNERS RE-ESTABLISHED. (Not Set on Ground.) (NAD 83)

T12N, R63W, 6th P.M.



LINE TABLE		
LINE	DIRECTION	LENGTH
L1	S15°33'41"E	810.21'

PDOP = 2.1



NAD 83 (SURFACE LOCATION)	NAD 83 (LANDING POINT)	NAD 83 (TARGET BOTTOM HOLE)
LATITUDE = 40°58'33.31" (40.975921°)	LATITUDE = 40°58'25.59" (40.973775°)	LATITUDE = 41°00'03.93" (41.001092°)
LONGITUDE = 104°22'36.89" (104.376913°)	LONGITUDE = 104°22'34.13" (104.376146°)	LONGITUDE = 104°22'32.90" (104.375804°)
NAD 27 (SURFACE LOCATION)	NAD 27 (LANDING POINT)	NAD 27 (TARGET BOTTOM HOLE)
LATITUDE = 40°58'33.38" (40.975938°)	LATITUDE = 40°58'25.65" (40.973792°)	LATITUDE = 41°00'03.99" (41.001108°)
LONGITUDE = 104°22'35.04" (104.376401°)	LONGITUDE = 104°22'32.28" (104.375635°)	LONGITUDE = 104°22'31.05" (104.375293°)
STATE PLANE NAD 83 (CO. NORTH)	STATE PLANE NAD 83 (CO. NORTH)	STATE PLANE NAD 83 (CO. NORTH)
N: 1600347.25' E: 3310125.72'	N: 1599568.13' E: 3310347.34'	N: 1609521.71' E: 3310315.47'
STATE PLANE NAD 27 (CO. NORTH)	STATE PLANE NAD 27 (CO. NORTH)	STATE PLANE NAD 27 (CO. NORTH)
N: 600344.81' E: 2310275.18'	N: 599565.70' E: 2310496.80'	N: 609519.10' E: 2310464.99'

CERTIFICATE  
THIS IS TO CERTIFY THAT THE ABOVE PLAT WAS PREPARED FROM FIELD NOTES OF ACTUAL SURVEYS MADE BY ME OR UNDER MY SUPERVISION, AND THAT THE SAME ARE TRUE AND CORRECT TO THE BEST OF MY KNOWLEDGE AND BELIEF.

REGISTERED LAND SURVEYOR  
REGISTRATION NO. 28285  
STATE OF COLORADO  
08-30-20

REV: 2 01-28-20 C.C. (NAME CHANGE, LP & BHL CHANGES)

**BASIS OF BEARINGS**  
TRANSVERSE MERCATOR PROJECTION WITH  
A CENTRAL MERIDIAN OF W105°00'00".

**BASIS OF ELEVATION**  
OPUS SOLUTION GENERATED NAVD 88



**UELS, LLC**  
Corporate Office \* 85 South 200 East  
Vernal, UT 84078 \* (435) 789-1017



**HIGHPOINT OPERATING CORPORATION**

**FOX CREEK 25 SE PAD  
FOX CREEK 25-5807BW  
SW 1/4 SE 1/4, SECTION 25, T12N, R63W, 6th P.M.  
WELD COUNTY, COLORADO**

SURVEYED BY	GREG WEIMER, D.E.	08-20-18	SCALE
DRAWN BY	J.U.	08-31-18	1" = 1000'

**WELL LOCATION PLAT**