

1001 17<sup>th</sup> Street  
Suite 2000  
Denver, Colorado 80202



Erin Lind  
Lead Regulatory Analyst  
Tel: 720.595.2255  
E-mail: elind@gwogco.com

March 25, 2020

Colorado Oil and Gas Conservation Commission  
1120 Lincoln Street, Suite 801  
Denver, CO 80203

RE: Proposed Wellbore Spacing Unit  
**Kortum LD 09-379HN**  
**Document No. 401797886**  
Niobrara New Drill  
NWNE Sec. 21, Township 1S, Range 67W  
Adams County, Colorado

Dear Director:

Great Western Operating Company, LLC (Great Western) is planning to drill the above captioned well in accordance with the provisions of Colorado Oil and Gas Conservation Commission (COGCC) Rule 318A.e.

Great Western's proposed wellbore spacing unit consists of:

Township 1 South, Range 67 West (Adams County):

9: SWSW4

16: W2/W2

21: NWNW4

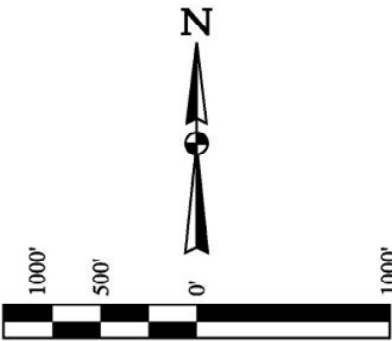
Total Acres: 240 acres

The 30-day notification time period has passed, and we have not yet received any objections to such well locations or proposed spacing unit, therefore Great Western hereby requests the Director to approve the above mentioned well. Great Western respectfully requests the COGCC review the enclosed map illustrating the proposed wellbore spacing unit.

Respectfully,

Erin Lind  
Lead Regulatory Analyst  
Great Western Operating Company, LLC

T1S, R67W, 6th P.M.



BASIS OF BEARINGS  
BASIS OF BEARINGS IS A G.P.S. OBSERVATION

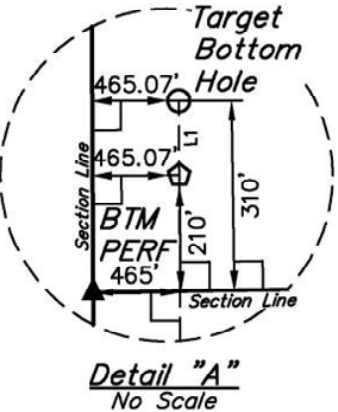
BASIS OF ELEVATION  
BENCHMARK JR 53 5026 LOCATED IN THE SW 1/4 SE 1/4 OF SECTION 18, T1N, R68W, 6th P.M., TAKEN FROM 1988 PUBLISHED DATUM BY THE UNITED STATES DEPARTMENT OF THE INTERIOR, GEOLOGICAL SURVEY AS BEING 5028 FEET.

LEGEND:

- 90° SYMBOL
- PROPOSED WELLHEAD.
- ENTRY POINT.
- BTM PERF.
- TARGET BOTTOM HOLE.
- SECTION CORNERS LOCATED. (NAD 83)
- SECTION CORNERS RE-ESTABLISHED. (Not Set on Ground.) (NAD 83)

LINE TABLE		
LINE	DIRECTION	LENGTH
L1	N00°17'43"W	100.00'

PSU Boundary Line



PDOP = 1.3

NAD 83 (SURFACE LOCATION)	
LATITUDE = 39°57'24.27" (39.956741)	
LONGITUDE = 104°53'30.51" (104.891808)	
NAD 27 (SURFACE LOCATION)	
LATITUDE = 39°57'24.32" (39.956757)	
LONGITUDE = 104°53'28.60" (104.891276)	
NAD 83 (ENTRY POINT)	
LATITUDE = 39°57'24.20" (39.956722)	
LONGITUDE = 104°54'05.50" (104.901528)	
NAD 27 (ENTRY POINT)	
LATITUDE = 39°57'24.25" (39.956736)	
LONGITUDE = 104°54'03.59" (104.900997)	
NAD 83 (BTM PERF)	
LATITUDE = 39°58'20.87" (39.972464)	
LONGITUDE = 104°54'05.74" (104.901594)	
NAD 27 (BTM PERF)	
LATITUDE = 39°58'20.93" (39.972481)	
LONGITUDE = 104°54'03.83" (104.901064)	
NAD 83 (TARGET BOTTOM HOLE)	
LATITUDE = 39°58'21.86" (39.972739)	
LONGITUDE = 104°54'05.75" (104.901597)	
NAD 27 (TARGET BOTTOM HOLE)	
LATITUDE = 39°58'21.92" (39.972756)	
LONGITUDE = 104°54'03.83" (104.901064)	

CERTIFICATE

THIS IS TO CERTIFY THAT THE ABOVE PLAT WAS PREPARED FROM FIELD NOTES OF ACTUAL SURVEYS MADE BY ME OR UNDER MY SUPERVISION AND THAT THE SAME ARE TRUE AND CORRECT TO THE BEST OF MY KNOWLEDGE AND BELIEF.

REGISTERED LAND SURVEYOR  
REGISTRATION NO. 28285  
STATE OF COLORADO

REV: 5 07-10-18 T.L.L. (SHL CHANGE)

GREAT WESTERN OPERATING COMPANY

KORTUM LD 09-379HN  
NW 1/4 NE 1/4, SECTION 21, T1S, R67W, 6th P.M.  
ADAMS COUNTY, COLORADO



UELS, LLC  
Corporate Office \* 85 South 200 East  
Vernal, UT 84078 \* (435) 789-1017

SURVEYED BY: JARED CHRISTOPHER, G.W.	DATE: 11-21-16
DRAWN BY: D.COX	DATE DRAWN: 11-28-16
SCALE: 1" = 1000'	

WELL LOCATION PLAT