

Inspection Photos
Operator: BP America
API#: 067-07859
Date: 3/16/2020



Photo 1. View of the southern project area from the southeastern corner facing westward. Revegetation is progressing with grasses such as blue grama, crested wheatgrass, and western wheatgrass, largely in a grazed condition.



Photo 2. View of the northern project area from the southeastern corner facing northward. Revegetation is progressing with grasses and shrubs such as smooth brome and rubber rabbitbrush.



Photo 3. View of junk and debris within the northwestern project area.

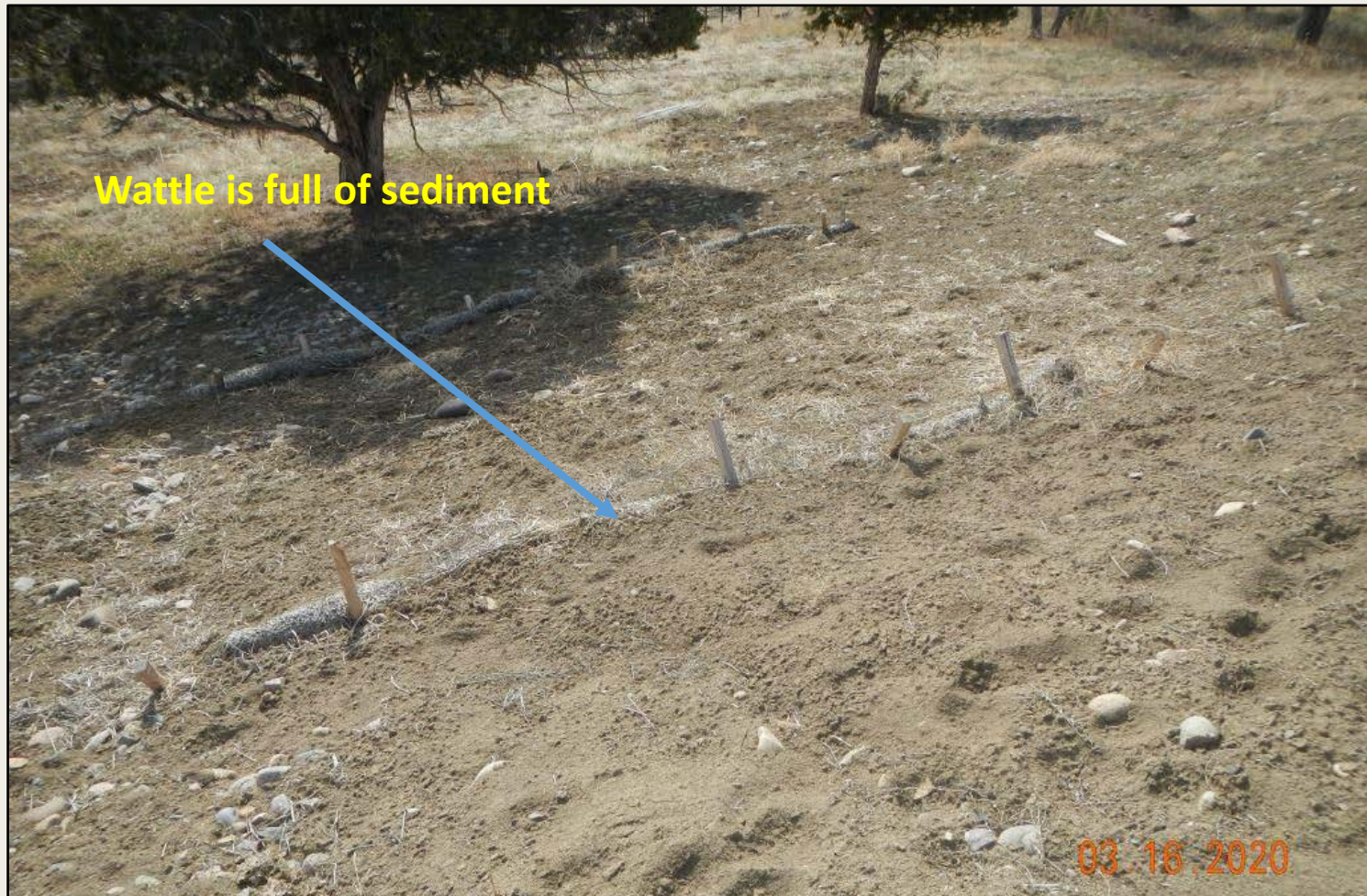


Photo 4. View of wattles full of sediment and bare soils needing additional stabilization, within the southeastern project area.



Photo 5. View of reference area vegetation, comprised of open pinyon-juniper woodland, with sagebrush and herbaceous understory.