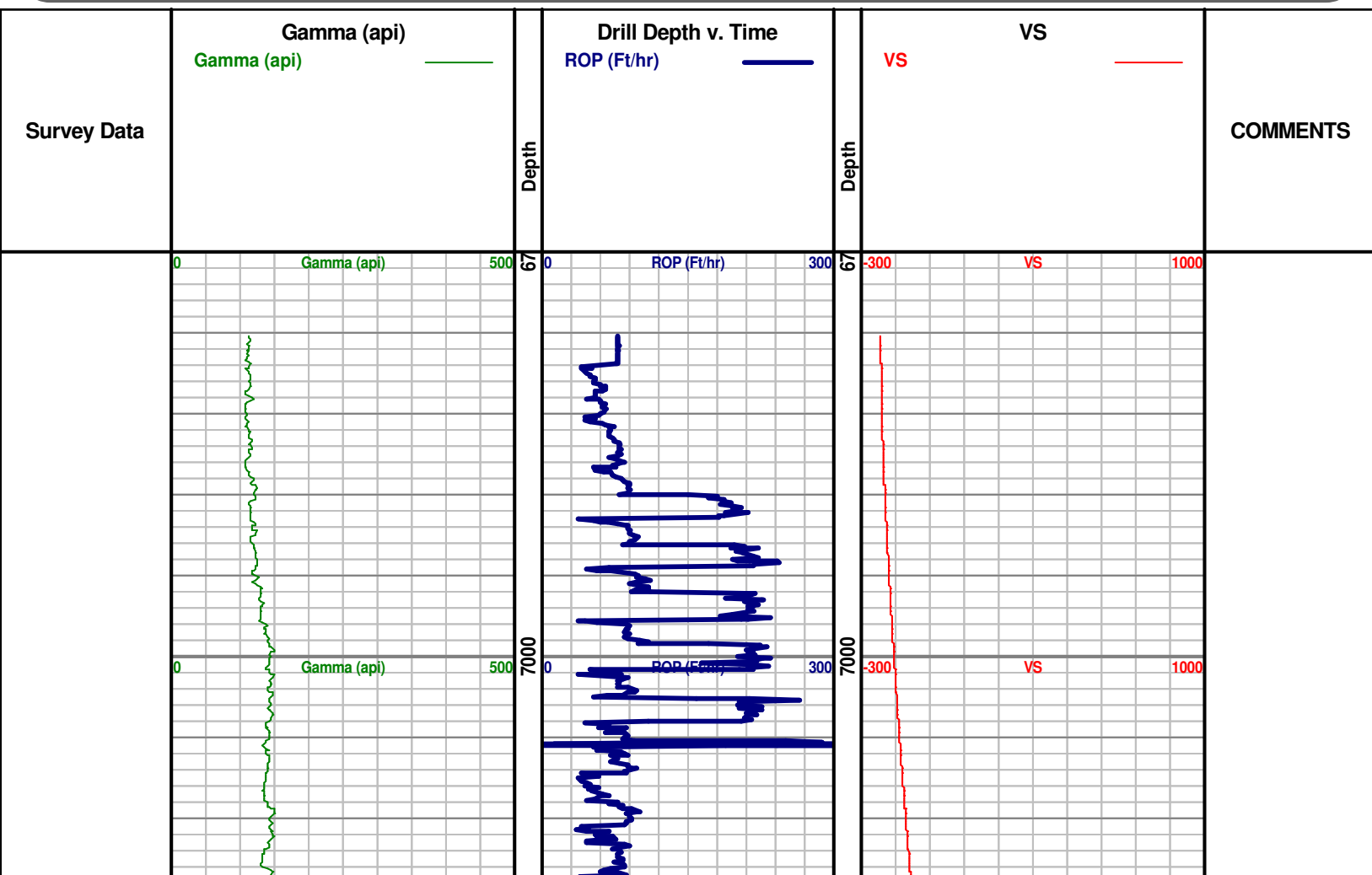


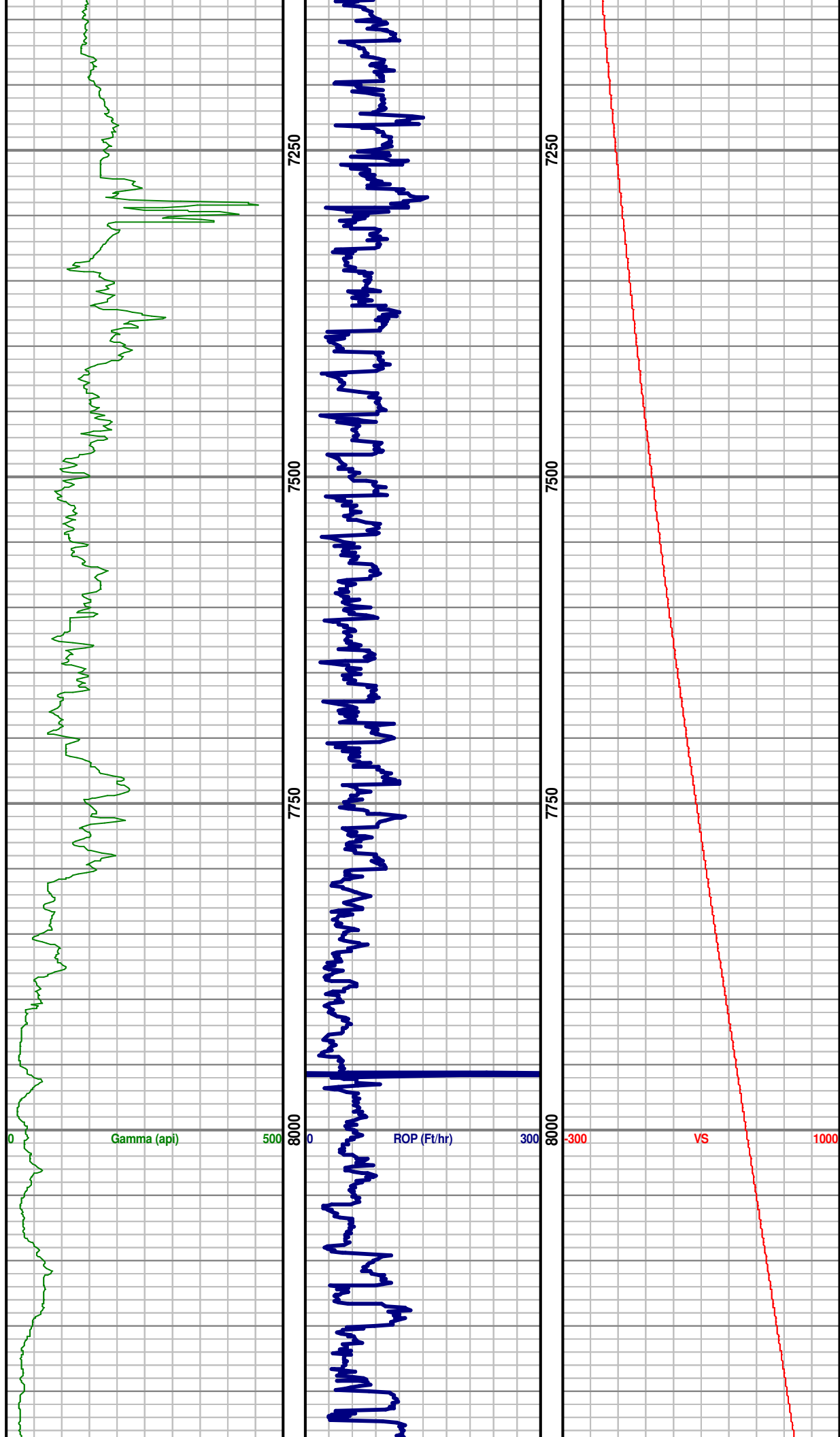


Denver Remote Management Center  
13949 West Colfax Ave, Suite 205  
Lakewood, Colorado 80401

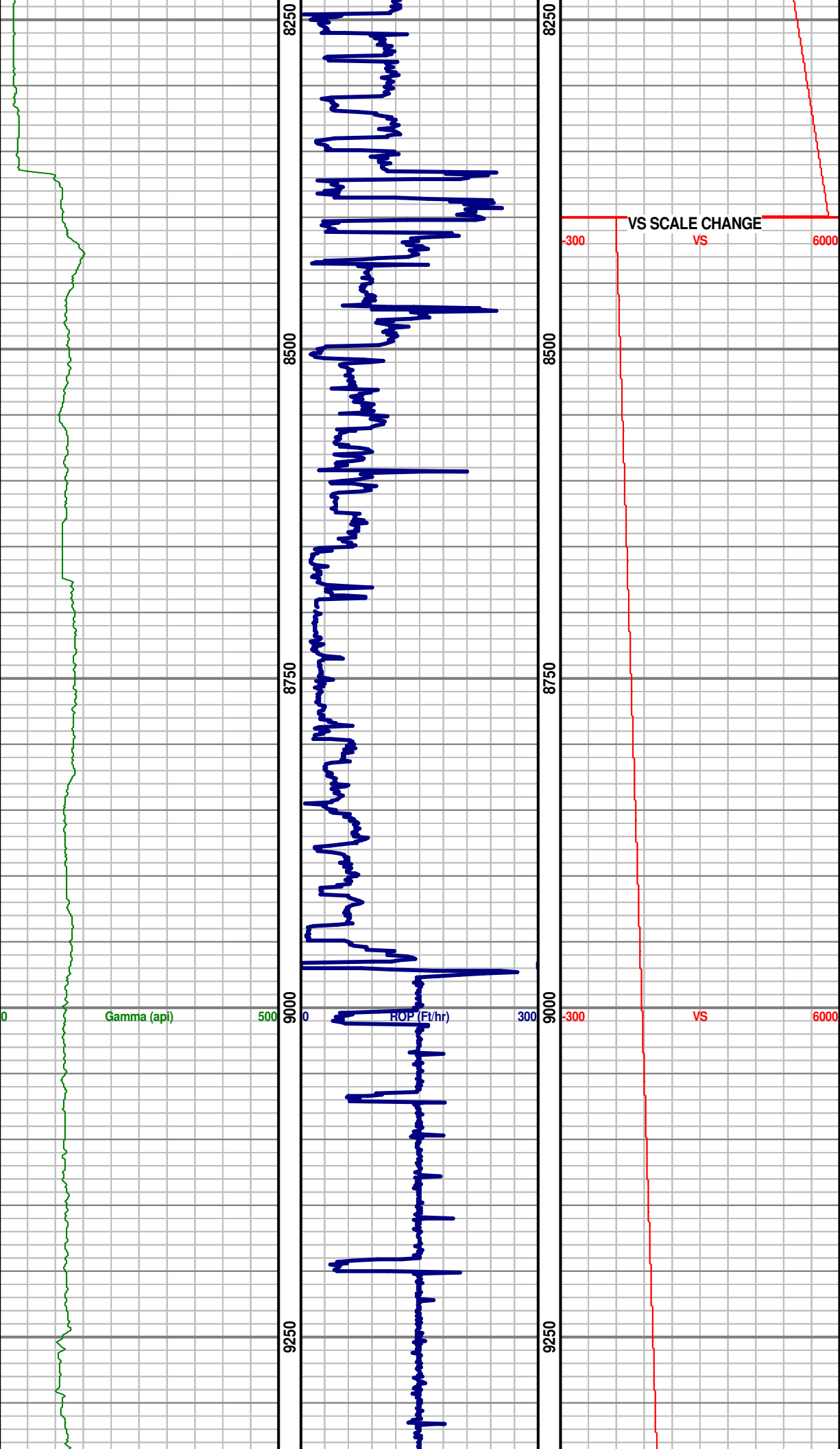
Phone 303.325.3289  
[WWW.HZMUD.COM](http://WWW.HZMUD.COM)

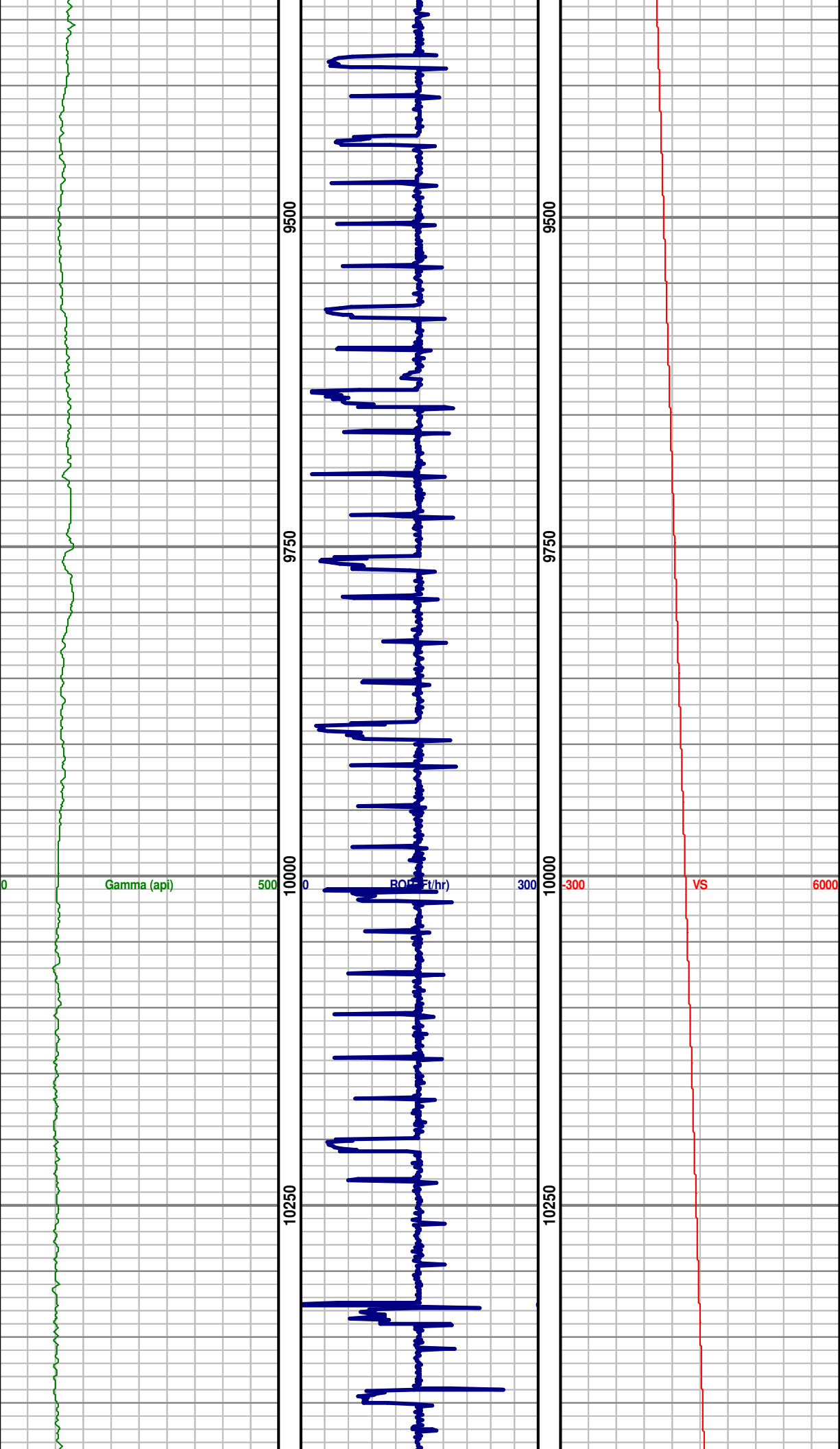
| Customer Information   | Well Information   |
|--|--|
| <p>Operator: PDC Energy Inc<br/>1775 Sherman Street<br/>Suite 3000<br/>Denver, CO 80203</p> <p>Geologist: Steve Sarada<br/>PDC Energy, Inc.</p>                              | <p>Well Name: Thornton 15Y-414</p> <p>Location: SESE SEC 15, 7N, 66W, 6TH<br/>1,115' FSL x 466' FEL</p> <p>County: Weld<br/>State: Colorado</p>  |
| Remote Logging Details   |  |
| <p>Logger: HORIZON DENVER REMOTE<br/>MANAGEMENT CENTER</p> <p>Log Interval: 6,800' MD to 12,015' MD<br/>Start Date: September 24, 2014<br/>Release Date: October 2, 2014</p> | <p>Drilling Rig: Ensign 14<br/>Total Depth: 12,015' MD<br/>TD Date: October 2, 2014<br/>Field : Wattenberg<br/>KB Elevation: 4,936'<br/>GR Elevation: 4,921'<br/>API Number: 05-123-37997-0000</p> |

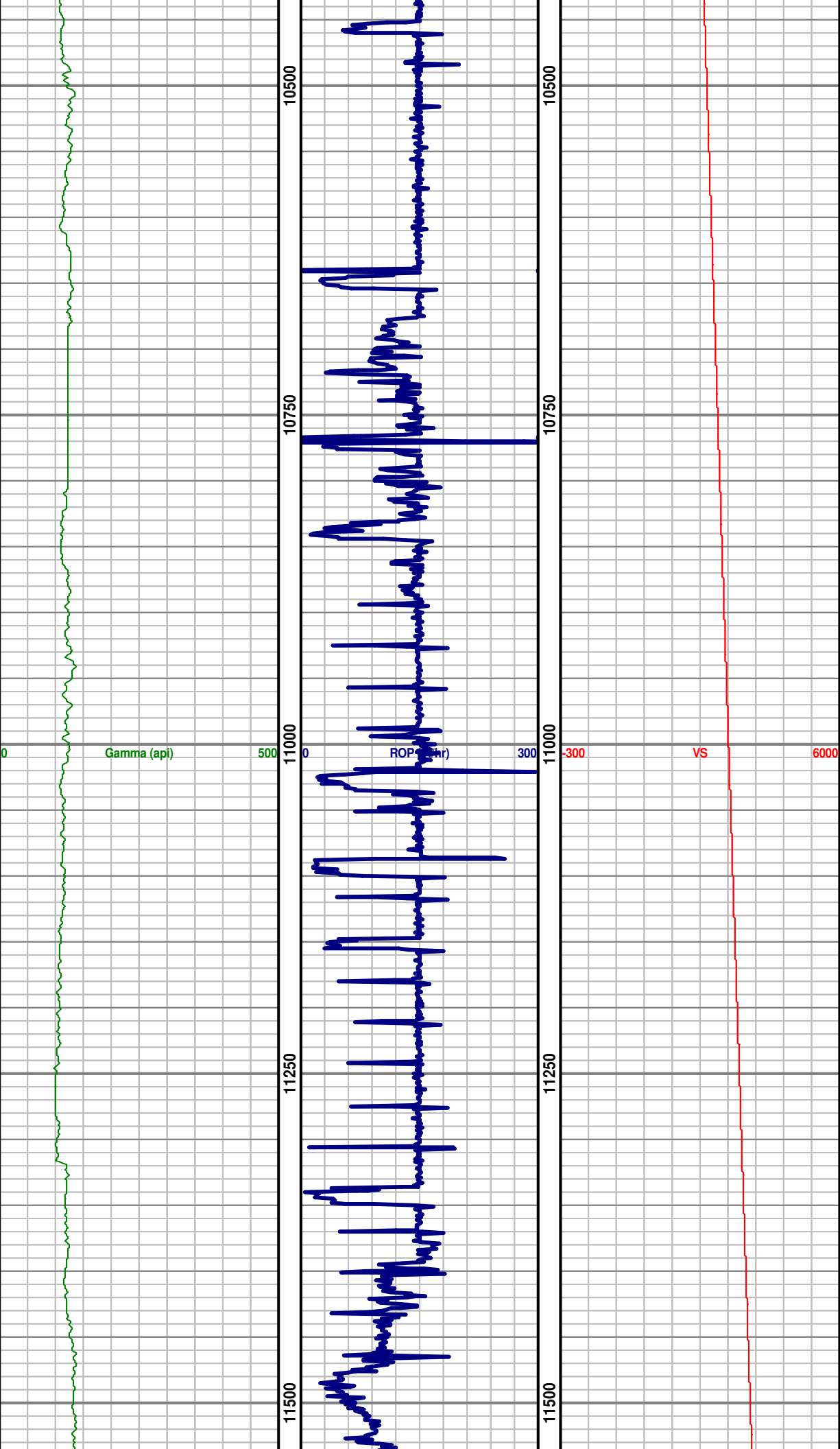


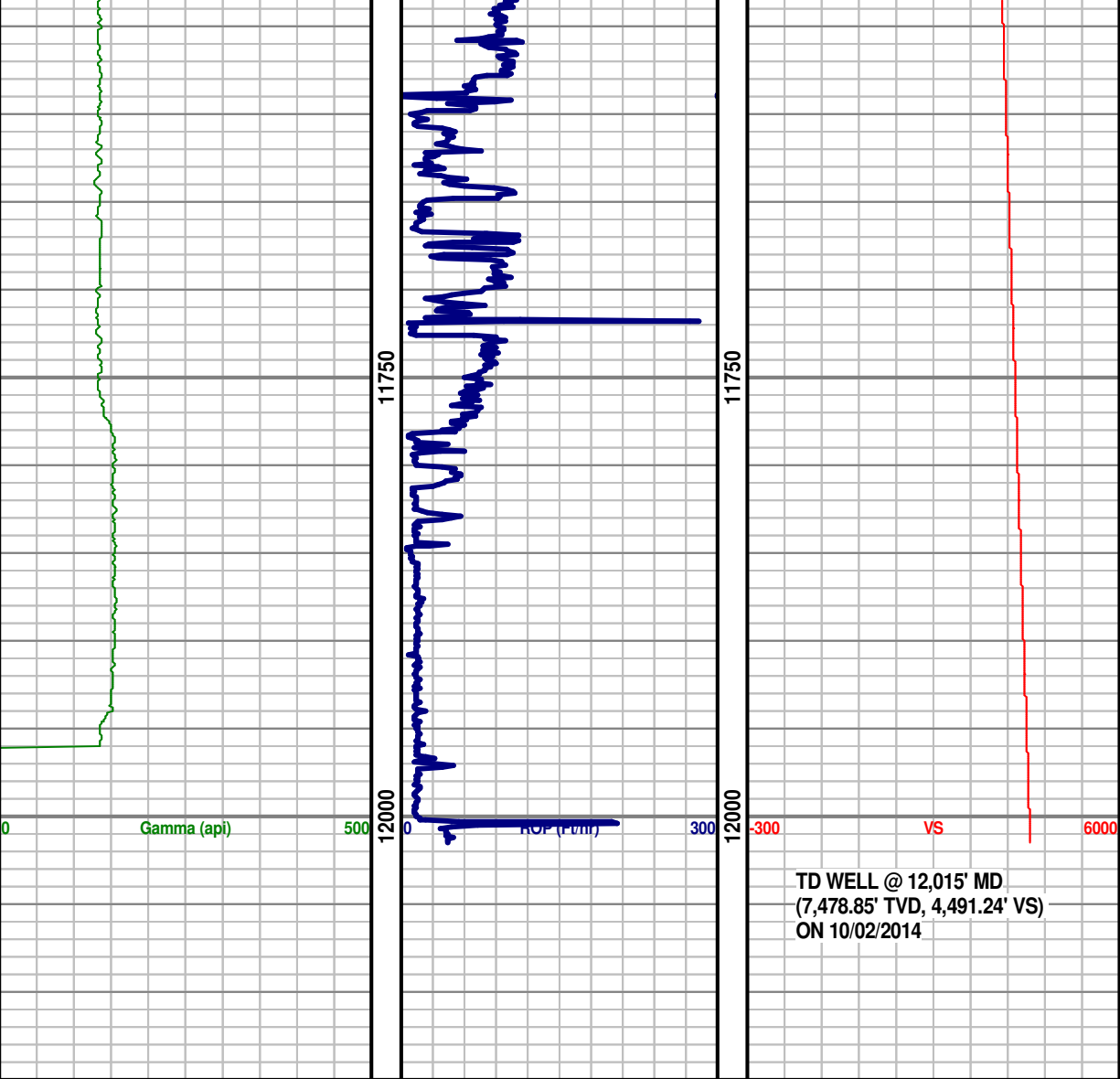


TD CURVE @  
7,958' MD (7,450.5'  
TVD, 521.3' VS) ON  
9/25/2014









TD WELL @ 12,015' MD  
(7,478.85' TVD, 4,491.24' VS)  
ON 10/02/2014