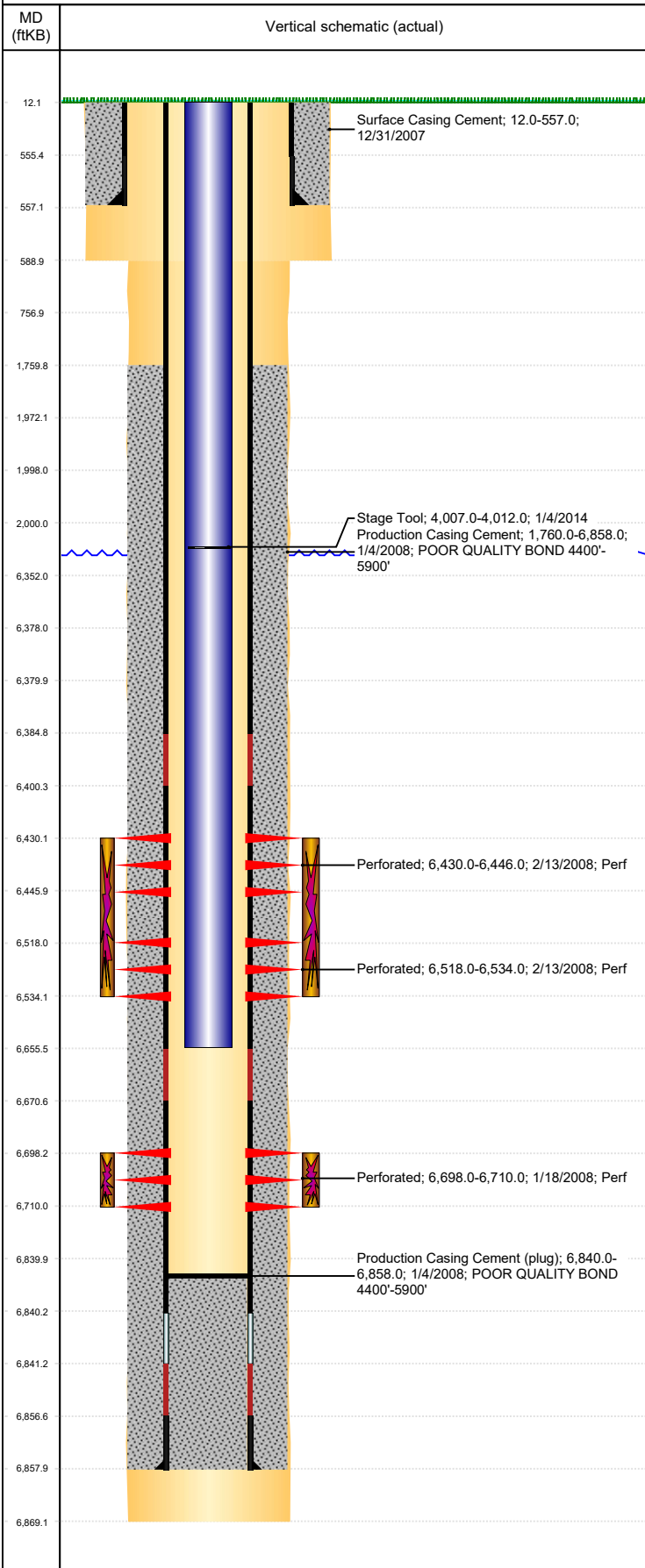


Well Name: LOLOFF B35-17

VERTICAL, ORIGINAL HOLE, 3/10/2020 3:24:07 PM



Well Header									
API 05-123-26636		Business Unit DJ BASIN			District 15		Well Config VERTICAL		
KB - GL / MSL (ft... 12.00		Spud Date 12/30/2007		P & A Date		Well Production Status PR			SoRT No
Comment DISCREP- DRL RPT TD DATE & CSG SET DATE 1/3/2008, ST RPT 1/4/2008									
Surface Location (Congressional)									
Qtr 3 NW	Qtr 4 NE	Section 35	Twnshp 5	Twnsh... N	Range 64	Rng E/... W	Actual Latitude (°) 40.35986836	Actual Longitude (°) -104.51207621	
Wellbore Sections									
Section Des			Size (in)			Act Top, MD (ftKB)		Act Btm, MD (ftKB)	
SURFACE			12 1/4			12		589	
PRODUCTION			7 7/8			589		6,869	
Casing Strings									
Csg Des			Run Date		OD (in)	Wt/Len (lb/ft)	Grade	Top, MD (ftKB)	MD (ftKB)
Surface			12/31/2007		8 5/8	24.00	J-55	12.0	557.0
Production			1/3/2008		4 1/2	11.60	M-80	12.0	6,858.0
Cement									
Des					Start Date		Top (ftKB)		Btm (ftKB)
Surface Casing Cement					12/31/2007		12.0		557.0
Production Casing Cement					1/4/2008		1,760.0		6,858.0
Zone Statuses									
Zone Name	Status Date	Status	Fluid Type	Job				Prod Method	
CODELL	2/15/2008	PR	Water	DRILLING/COMPLETION - ORIGINAL, 12/30/200...				Flowing	
CODELL	2/15/2010	PR							
NIOBRARA	11/28/2015	PR							
NIOBRARA	2/9/2016	PR							
Perforation Data									
Linked Zone		Bnch/Stg	Entered Shot Total	Top (ftKB)		Btm (ftKB)		Date	
NIOBRARA, ORIGINAL HOLE		A	64	6,430.00		6,446.00		2/13/2008	
NIOBRARA, ORIGINAL HOLE		B	64	6,518.00		6,534.00		2/13/2008	
CODELL, ORIGINAL HOLE			48	6,698.00		6,710.00		1/18/2008	
Stimulation Intervals									
Zone				Start Date		Top (ftKB)		Btm (ftKB)	
NIOBRARA, ORIGINAL HOLE				2/13/2008		6,430.0		6,534.0	
CODELL, ORIGINAL HOLE				2/13/2008		6,698.0		6,710.0	
Other In Hole									
Run Date		Des				OD (in)	Top (ftKB)	Btm (ftKB)	
Logs									
Date		Type					Top, MD (ftKB)		Btm, MD (ftKB)
1/3/2008		Caliper/Comp.Density/Neutron/GR/SP/ML					557.0		6,852.0
1/3/2008		DIL/GR/SP/Caliper					557.0		6,872.0
1/16/2008		CBL/CCL/GR					1,650.0		6,830.0
6/17/2016		GYRO					0.0		6,600.0
Plug Back Total Depths									
Date		Type			Com				Depth (ftKB)
1/16/2008		FILL			DEPTH LOGGER ON CBL				6,837.0
3/12/2008		PLUG			PUSHED REMAINDER OF CIFT TO HERE.				6,840.0