



Job Summary

Ticket Number
TN# **BCO-2002-0059** Ticket Date
2/15/2020

COUNTY	COMPANY	API Number
LARIMER	ANADARKO PETROLEUM CORPORATION	0506906178
WELL NAME	RIG	JOB TYPE
DUNKLEE 1	Ensign 122	CM-P2A-PERM.
SURFACE WELL LOCATION	CJES Field Supervisor	CUSTOMER REP
40.379913 -105.004899	Israel Davila	Nick Lang

EMPLOYEES
<i>AJ Staples</i>
<i>Jacob Guseman</i>
<i>James Ragle</i>

WELL PROFILE			
Max Treating Pressure (psi):	1500	Bottom Hole Static Temperature (°F):	
Bottom Hole Circulating Temperature (°F):		Well Type:	old

Open Hole

1	Size (in)	TMD From (ft)	TMD to (ft)	TVD From (Ft)	TVD to (Ft)
	7.875	208	6207		
2	Size (in)	TMD From (ft)	TMD to (ft)	TVD From (Ft)	TVD to (Ft)

Casing/Tubing/Drill Pipe

Type	Size (in)	Weight (lb/ft)	Grade	TMD From (ft)	TMD to (ft)	TVD From (Ft)	TVD to (Ft)
Surface	8.625	32		0	208		
Type	Size (in)	Weight (lb/ft)	Grade	TMD From (ft)	TMD to (ft)	TVD From (Ft)	TVD to (Ft)
Drill Pipe	4.5	16.6		0	6207		
Type	Size (in)	Weight (lb/ft)	Grade	TMD From (ft)	TMD to (ft)	TVD From (Ft)	TVD to (Ft)

CEMENT DATA

Stage 1: Type: Nio plug	From Depth (ft):	5802	To Depth (ft):	6207	
	Volume (sacks):	180	Volume (bbls):	48.5	
Cement & Additives:			Density (ppg)	Yield (ft³/sk)	Water Req.
Nio plug			15.8	1.52	6.19

Stage 2:	From Depth (ft):	3879	To Depth (ft):	4288	
Type: Sussex plug	Volume (sacks):	115	Volume (bbls):	49	
Cement & Additives:			Density (ppg)	Yield (ft³/sk)	Water Req.
Sussex blend			12	2.41	12.03

Stage 3: Type: Shoe plug	From Depth (ft):	3316	To Depth (ft):	3743	
	Volume (sacks):	120	Volume (bbls):	51.5	
Cement & Additives:			Density (ppg)	Yield (ft³/sk)	Water Req.
Sussex blend			12	2.41	12.03

Stage 4:	From Depth (ft):	0	To Depth (ft):	446'	
Type:	Volume (sacks):	225 sacks 240	Volume (bbls):	49	
Cement & Additives:			Density (ppg)	Yield (ft³/sk)	Water Req.
Class G			15.8	1.15	5.00

SUMMARY

Preflushes:	20 bbls of SAPP	Calculated Displacement (bbl):	82	Stage 1	Stage 2
	30 bbls of Fresh Water	Actual Displacement (bbl):	78		
Total Preflush/Spacer Volume (bbl):	50	Plug Bump (Y/N):	N/A	Bump Pressure (psi):	N/A
Total Slurry Volume (bbl):	198	Lost Returns (Y/N):	N (if Y, when)		
Total Fluid Pumped	424				
Returns to Surface:	Cement 3 bbls				

Job Notes (fluids pumped / procedures / tools / etc.):
pumped 180 sx @ 15.8 from 5398' ETOC to 6207' Displaced 78 bbls got 2 back. Pumped 115 sx @ 12 ppg from 3879 ETOC to 4288'. Displaced 55 bbls. Pumped 120 sx @ 12 ppg from 3316' ETOC to 3743'. Displaced 45 bbls. Got 2 bbls back. Pumped 225 sx @ 15.8, 1.15 yield from 446' to surface. Rig removes drill pipe. top off casing with 15 sx.

Customer Representative Signature:

Thank You For Using
NexTier Completion Solutions



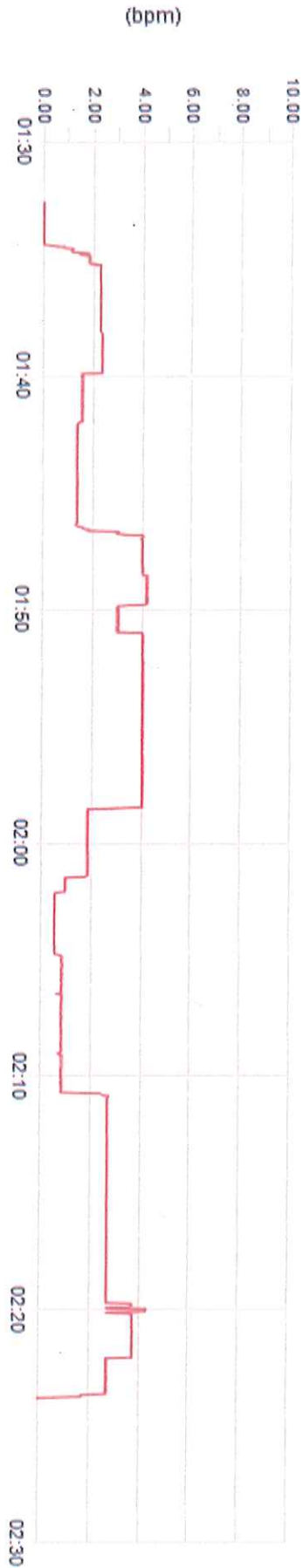


Client Anadarko
Ticket No. 20020059
Location Sec 21-5N-68W
Comments See job log

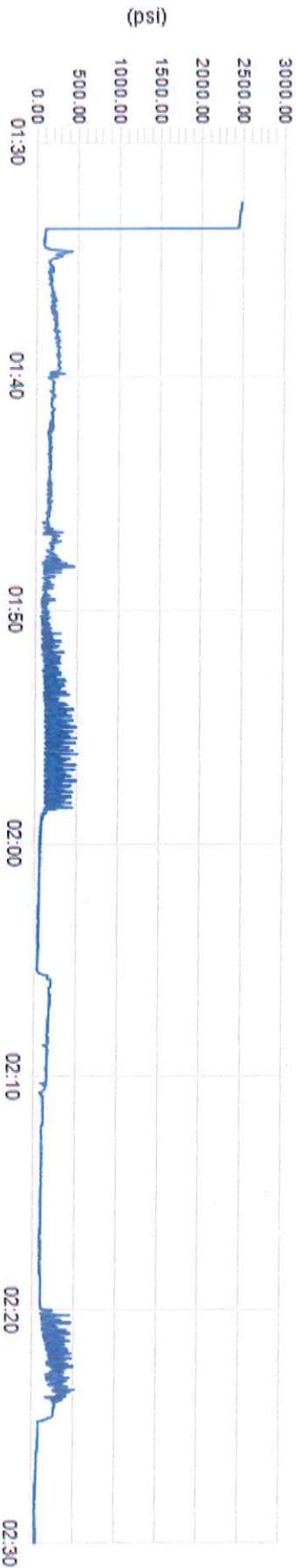
Client Rep nick lang
Well Name Dunklee 1
Job Type Abandonment Plugs

Supervisor Izzy Davila
Unit No. 445024
Service District Brighton
Job Date 02/13/2020

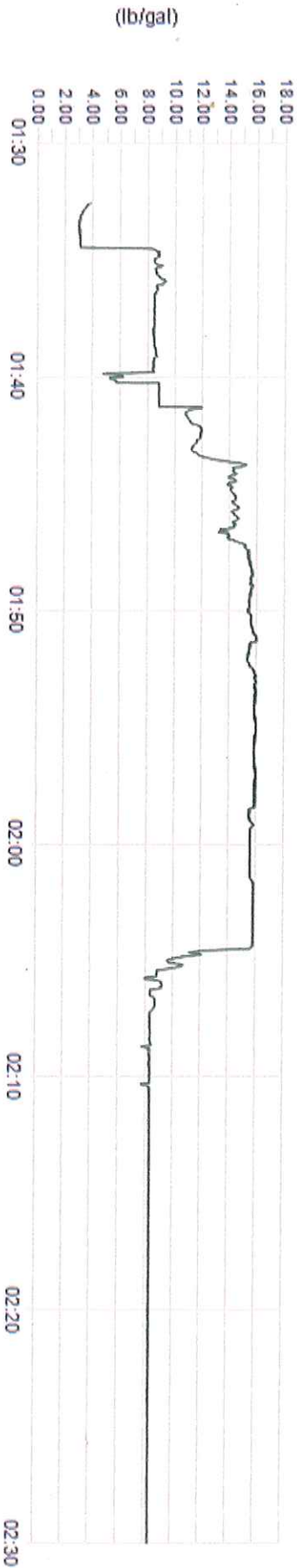
Unit 445024 Rate Total



Unit 445024 Pump Pressure



Unit 445024 Density



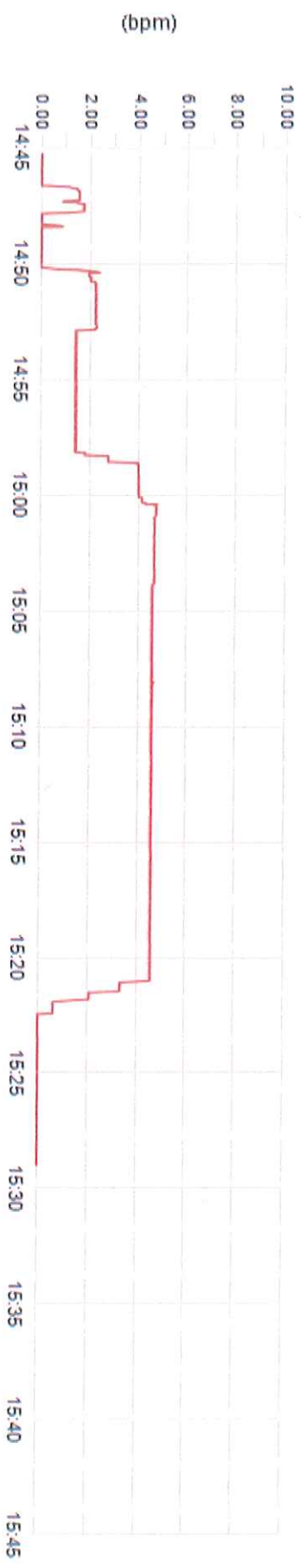


Client Anadarko
Ticket No. 20020069
Location Sec 21-SN-68W
Comments See job log

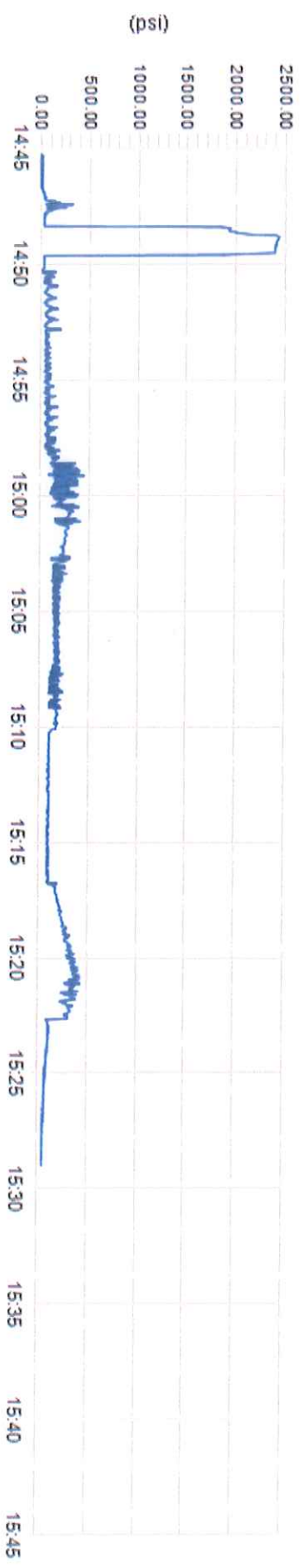
Client Rep nick lang
Well Name Dunklee 1
Job Type Abandonment Plugs

Supervisor Izzy Davila
Unit No. 445024
Service District Brighton
Job Date 02/13/2020

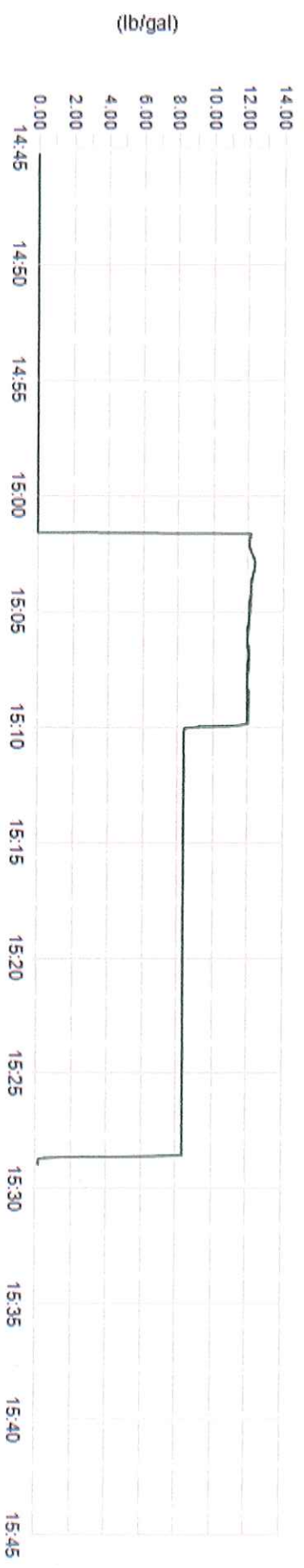
Unit 445024 Rate Total



Unit 445024 Pump Pressure



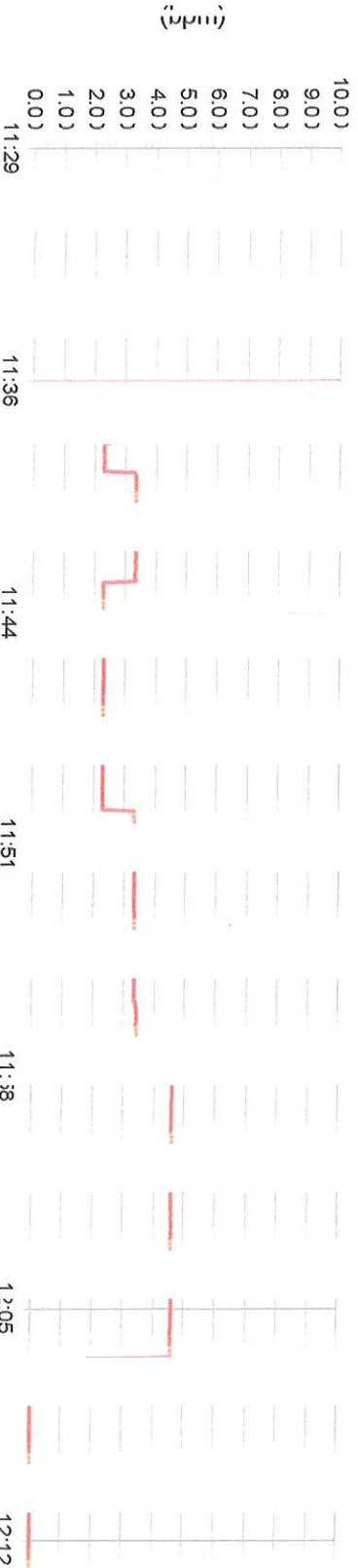
Unit 445024 Density





Client	Anada ko	Client Rep	Nick La ig	Supervisor	Israel Davila
Ticket No.	20020 59	Will Name	Camp 31-26	Unit No.	990128
Comments	plug 3	Job Type	Abandonment	Service District	Brig ton, CO
				Job Date	2/14/2020

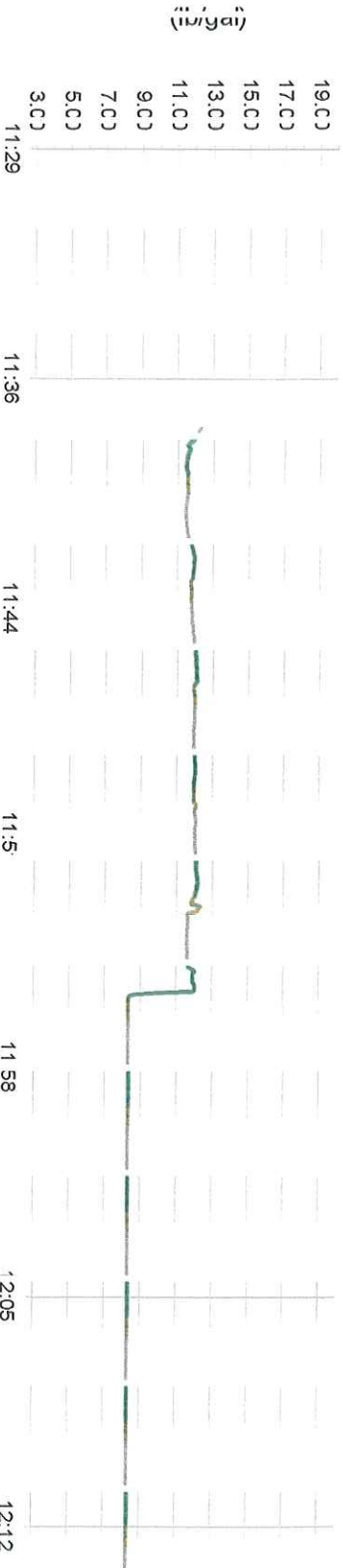
Unit 990528 Rate Total



Unit 990528 Pump Pressure



Unit 990528 Density



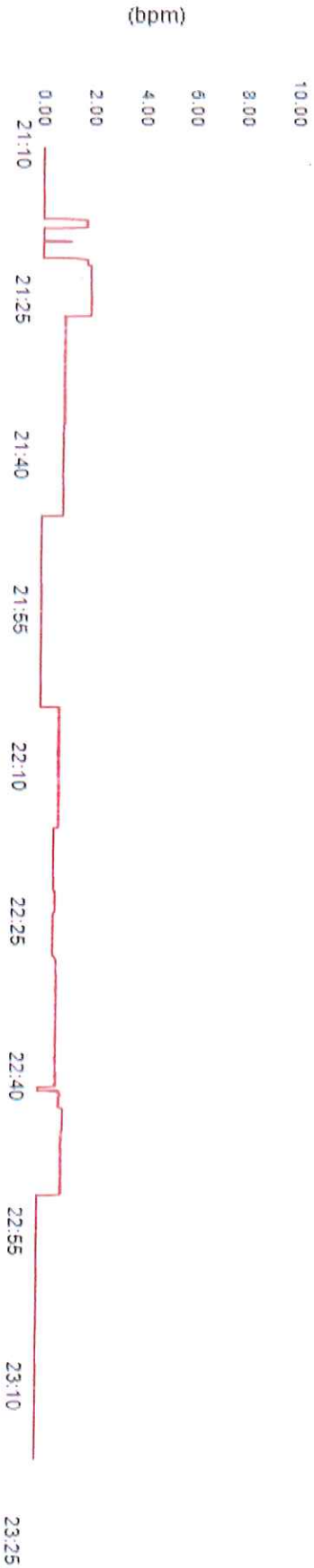


Client Anadarko
Ticket No. 59
Location
Comments see job log

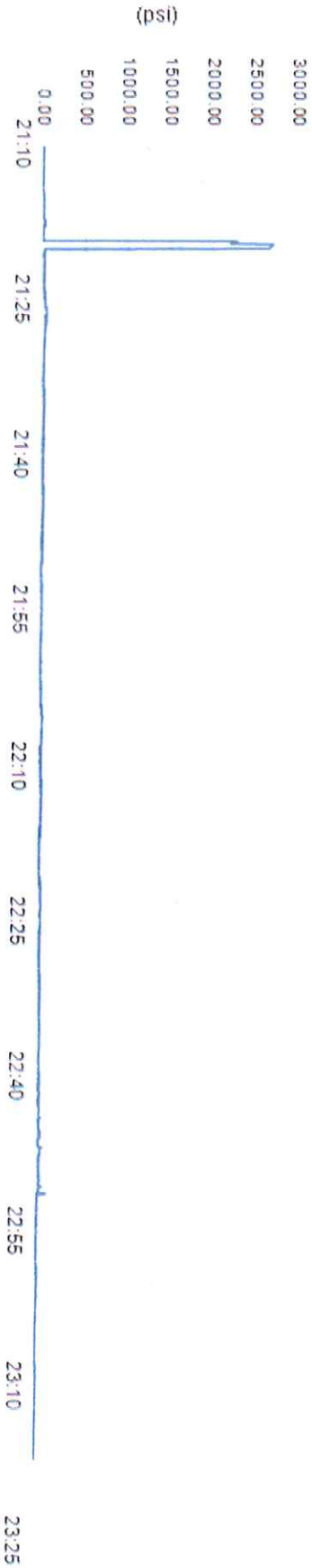
Client Rep Jeremy
Well Name
Job Type Abandonment Plugs

Supervisor Izzy Davila
Unit No. 945063
Service District Brighton
Job Date 02/14/2020

Unit 945063 Rate Total



Unit 945063 Pump Pressure



Unit 945063 Density

