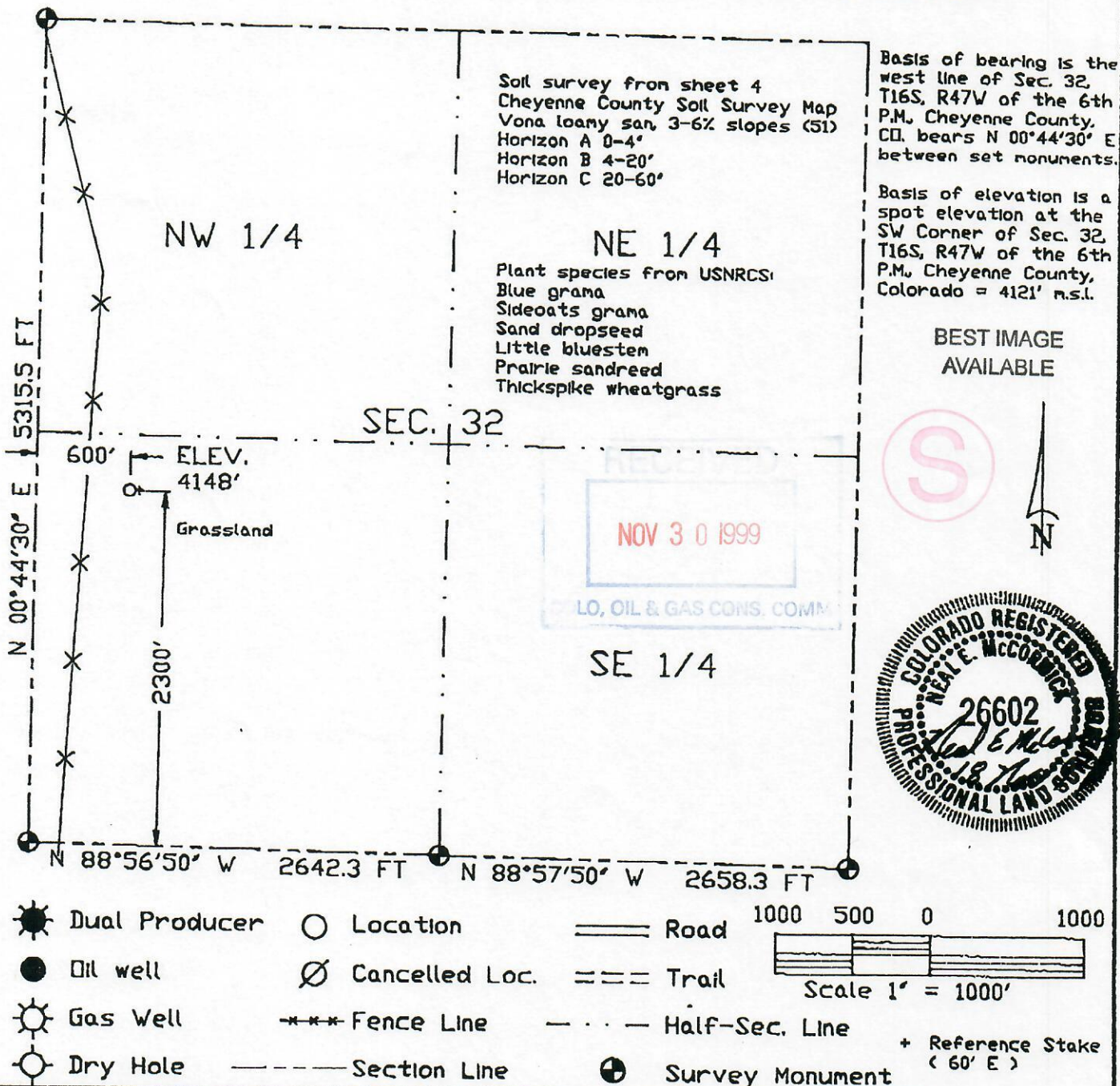




The accompanying plat is an accurate representation showing the location of a proposed well. This location may be described as a point 2300 feet North of the South line, and 600 feet east of the West line of Section 32, Township 16 South, Range 47 West of the 6th P.M. Cheyenne County, Colorado. The surface elevation at this point is 4148 feet above m.s.l. Note: This is not a land survey plat. There are no visible improvements within 200 feet of the location.



GREAT PLAINS  
SURVEYING

DURR #1-32

NW 1/4 SW 1/4 SEC. 32, T16S, R47W

MULL DRILLING COMPANY, INC.

CHEYENNE COUNTY, COLORADO 18 NOVEMBER 1999

P.O. Box 296  
Holyoke, CO 80734

Phone 970-854-3602  
Fax 970-854-2926