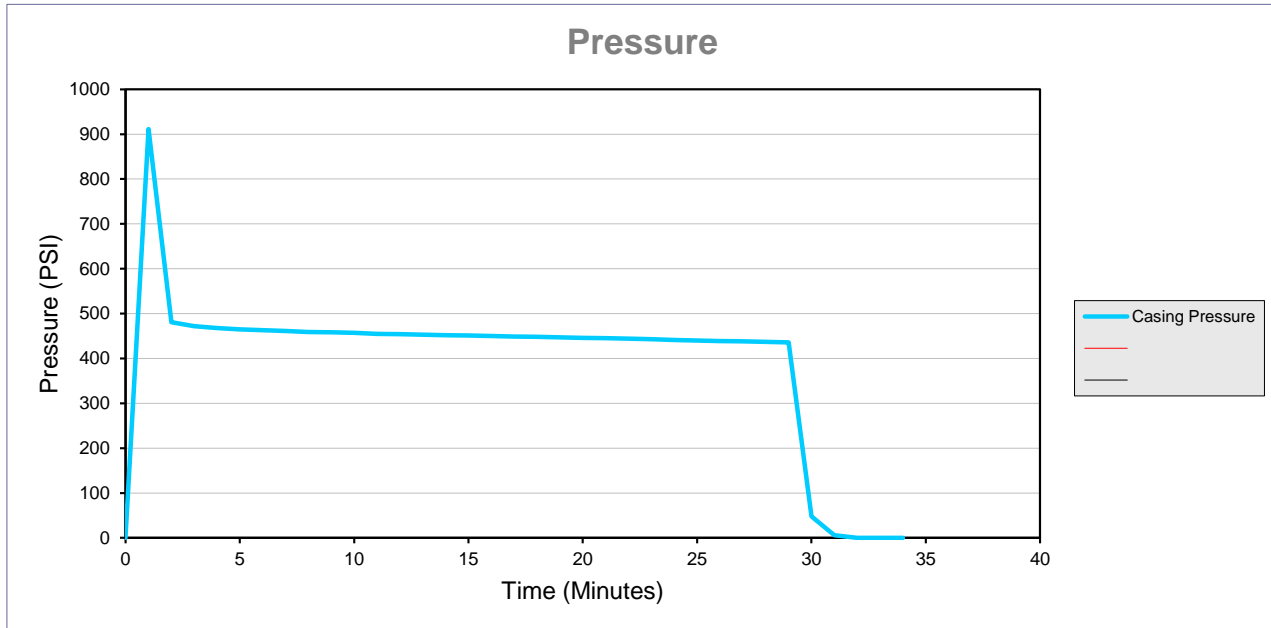


## Data Collection Report

Gauge Information	
Serial Number	362375
Model	15KPSIXP2I
Message Store	-----
Units	PSI

Run Info	
Start Time	2/26/20 11:33:38 AM
Stop Time	2/26/20 12:08:20 PM
Logging Interval	60
Lease: FAULKNER 30-23      API: 05-123-25474	



Serial Number 362375  
 Model 15KPSIXP2I  
 Units PSI  
 Firmware Version R0224      Message Store -----  
 Run Index 4  
 Logging Type Actual  
 Logging Interval 60  
 Start Time 2/26/2020 11:33  
 Stop Time 2/26/2020 12:08  
 Time Casing Pressure

Pressure (PSI)

Time	Event	Event Date	Time (hours)	Time (minutes)	Elapsed Time	Timestamp
0	Battery OK		0.00	0.00	0:00:00	2/26/20 11:33:38
0	Logging Interval, 60		0.00	0.00	0:00:00	2/26/20 11:33:38
0	Tare, -1		0.00	0.00	0:00:00	2/26/20 11:33:38
0			0.00	0.00	0:00:00	2/26/20 11:33:38
60			0.02	1.00	0:01:00	2/26/20 11:34:38
120			0.03	2.00	0:02:00	2/26/20 11:35:38
180			0.05	3.00	0:03:00	2/26/20 11:36:38
240			0.07	4.00	0:04:00	2/26/20 11:37:38
300			0.08	5.00	0:05:00	2/26/20 11:38:38
360			0.10	6.00	0:06:00	2/26/20 11:39:38
420			0.12	7.00	0:07:00	2/26/20 11:40:38
480			0.13	8.00	0:08:00	2/26/20 11:41:38
540			0.15	9.00	0:09:00	2/26/20 11:42:38
600			0.17	10.00	0:10:00	2/26/20 11:43:38
660			0.18	11.00	0:11:00	2/26/20 11:44:38
720			0.20	12.00	0:12:00	2/26/20 11:45:38
780			0.22	13.00	0:13:00	2/26/20 11:46:38
840			0.23	14.00	0:14:00	2/26/20 11:47:38
900			0.25	15.00	0:15:00	2/26/20 11:48:38
960			0.27	16.00	0:16:00	2/26/20 11:49:38
1020			0.28	17.00	0:17:00	2/26/20 11:50:38
1080			0.30	18.00	0:18:00	2/26/20 11:51:38
1140			0.32	19.00	0:19:00	2/26/20 11:52:38
1200			0.33	20.00	0:20:00	2/26/20 11:53:38
1260			0.35	21.00	0:21:00	2/26/20 11:54:38
1320			0.37	22.00	0:22:00	2/26/20 11:55:38
1380			0.38	23.00	0:23:00	2/26/20 11:56:38
1440			0.40	24.00	0:24:00	2/26/20 11:57:38
1500			0.42	25.00	0:25:00	2/26/20 11:58:38
1560			0.43	26.00	0:26:00	2/26/20 11:59:38
1620			0.45	27.00	0:27:00	2/26/20 12:00:38
1680			0.47	28.00	0:28:00	2/26/20 12:01:38
1740			0.48	29.00	0:29:00	2/26/20 12:02:38
1800			0.50	30.00	0:30:00	2/26/20 12:03:38
1860			0.52	31.00	0:31:00	2/26/20 12:04:38
1920			0.53	32.00	0:32:00	2/26/20 12:05:38
1980			0.55	33.00	0:33:00	2/26/20 12:06:38
2040			0.57	34.00	0:34:00	2/26/20 12:07:38