

WELL LOCATION CERTIFICATE
INDEPENDENCE D18-725

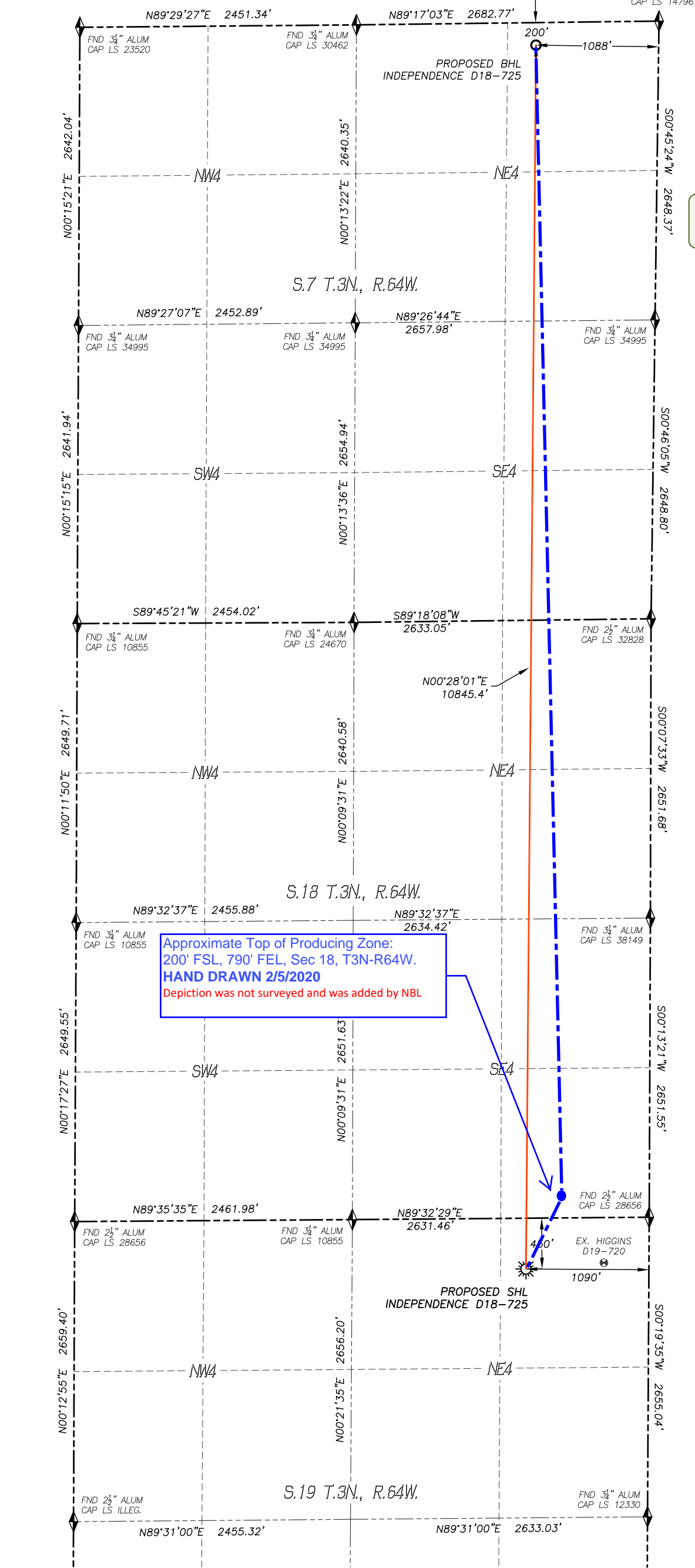
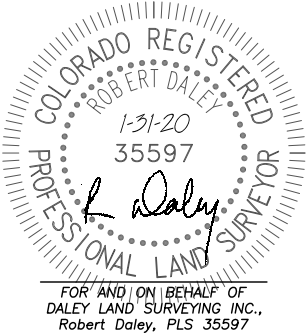
SECTION 19, TOWNSHIP 3 NORTH, RANGE 64 WEST
OF THE 6TH P.M., WELD COUNTY

APPROVED
By James Rouse at 7:41 am, Feb 05, 2020

IN ACCORDANCE WITH A REQUEST FROM TYLER BEAVERS OF NOBLE ENERGY INC., DALEY LAND SURVEYING, INC. HAS DETERMINED THE SURFACE LOCATION OF THE INDEPENDENCE D18-725 WELL TO BE 450' FNL, 1090' FEL, AS MEASURED AT NINETY (90) DEGREES FROM THE SECTION LINES OF SECTION 19, TOWNSHIP 3 NORTH, RANGE 64 WEST AND THE BOTTOM HOLE LOCATION TO BE 200' FNL, 1088' FEL, AS MEASURED AT NINETY (90) DEGREES FROM THE SECTION LINES OF SECTION 7, TOWNSHIP 3 NORTH, RANGE 64 WEST, OF THE 6TH PRINCIPAL MERIDIAN, WELD COUNTY, COLORADO.

I HEREBY STATE THAT THIS WELL LOCATION CERTIFICATE WAS PREPARED BY ME OR UNDER MY DIRECT SUPERVISION, THAT THE WORK WAS COMPLETED ON 8/17/2017 FOR AND ON BEHALF OF NOBLE ENERGY, INC., AND THAT THIS MAP DOES NOT REPRESENT A BOUNDARY SURVEY, IT IS NOT A LAND SURVEY PLAT OR AN IMPROVEMENT SURVEY PLAT AND IT IS NOT TO BE RELIED UPON FOR THE ESTABLISHMENT OF FENCE, BUILDING OR OTHER FUTURE IMPROVEMENT LINES.

- NOTES:
- BEARINGS FOR THIS MAP ARE ASSUMED AND BASED UPON GPS OBSERVATIONS MADE BETWEEN MONUMENTS LOCATED AT THE NORTHWEST CORNER AND NORTH QUARTER CORNER OF SECTION 19, T.3N., R.64W.
 - HORIZONTAL DATUM IS NAD83.
 - VERTICAL DATUM IS NAVD88 AND ORIGINATES FROM THE LOCAL C.O.R.S. NETWORK, UTILIZING THE GEOID12A MODEL.
 - SEE LOCATION DRAWING FOR VISIBLE IMPROVEMENTS WITHIN 500' OF PROPOSED DISTURBED AREA.
 - SURFACE USE: RANGELAND.
 - INST. OPERATOR: KYLE DALEY.
 - NEAREST WELL: 693± NE - HIGGINS D19-720



NEAREST CULTURAL ITEMS:

BUILDING:	395'± SW
BUILDING UNIT:	2348'± NW
HIGH OCC. BLD. UNIT:	5280'±
DES. OUTSIDE ACTIVITY AREA:	5280'±
PUBLIC ROAD:	438'± N
ABOVE GROUND UTILITY:	1091'± E
RAILROAD:	5280'±
PROPERTY LINE:	450'± N

NAD 83 LATITUDE AND LONGITUDE			
SURFACE LOCATION:		BOTTOM HOLE:	
LATITUDE:	N40.21680°	LATITUDE:	N40.24656°
LONGITUDE:	W104.58835°	LONGITUDE:	W104.58804°
ELEV:	4770'		
PDOP:	1.0		
QTR/QTR:	NE4/NE4		

LEGEND

- FOUND MONUMENT AS DESCRIBED
- PROPOSED WELL
- EXISTING WELL
- BOTTOM HOLE
- ABANDONED WELL
- CALCULATED POSITION

