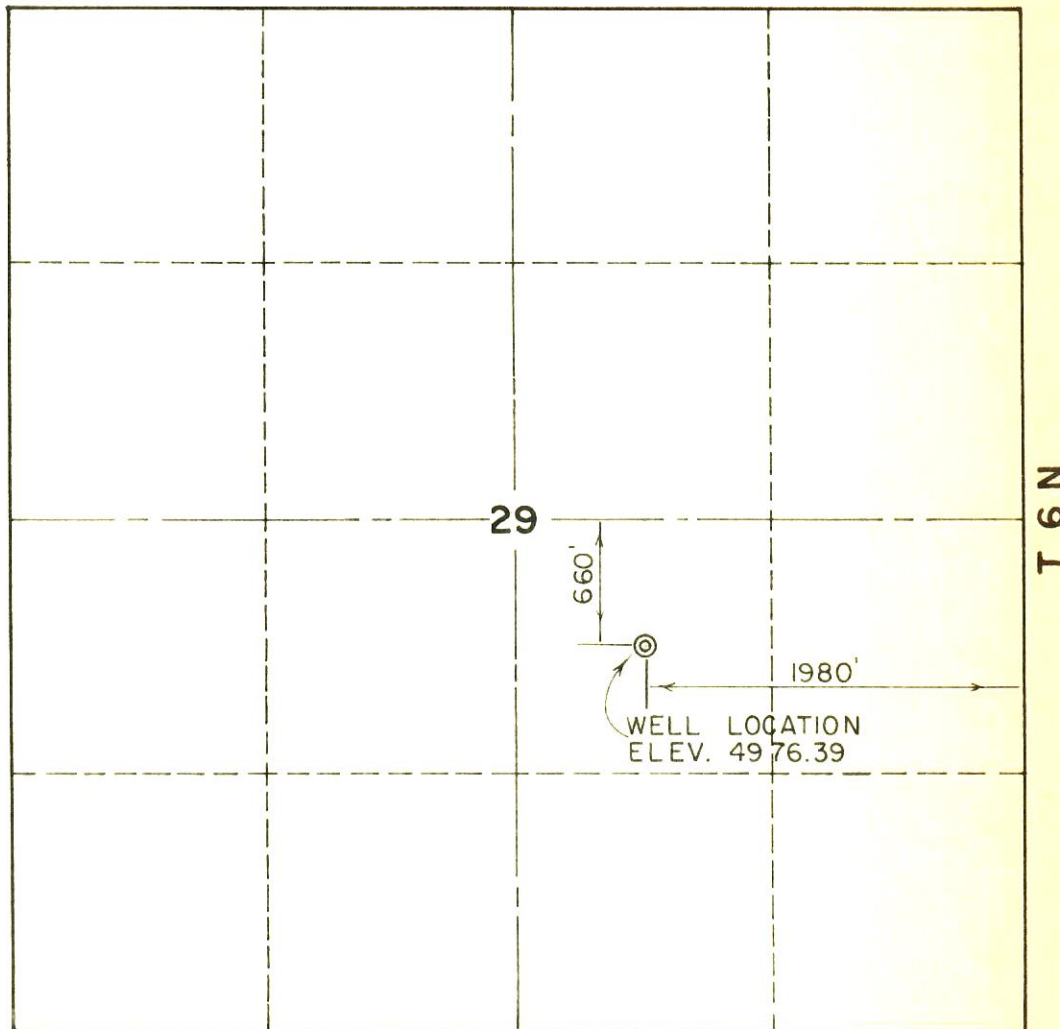




00684409

RECEIVED  
FEB 18 1965OIL & GAS  
CONSERVATION COMMISSION

R 68 W



SCALE 1" = 1000'

HOGAN & ASSOCIATES OF LOVELAND, COLORADO HAS IN ACCORDANCE WITH A REQUEST FROM MR. JACK HENNIG FOR RESERVE PETROLEUM CO. DETERMINED THE LOCATION OF WELL No. 1 UPRR FRANK, TO BE IN THE NW1/4, SE1/4 SECTION 29, T6N, R68W OF THE 6th. PRINCIPAL MERIDIAN, LARIMER COUNTY, COLORADO. THE ABOVE PLAT SHOWS THE LOCATION OF THE WELL SITE IN SAID SECTION.

HOGAN & ASSOCIATES  
1st. NAT'L. BANK BLDG.  
LOVELAND, COLORADO