

LEGEND:

EXISTING LOCATION



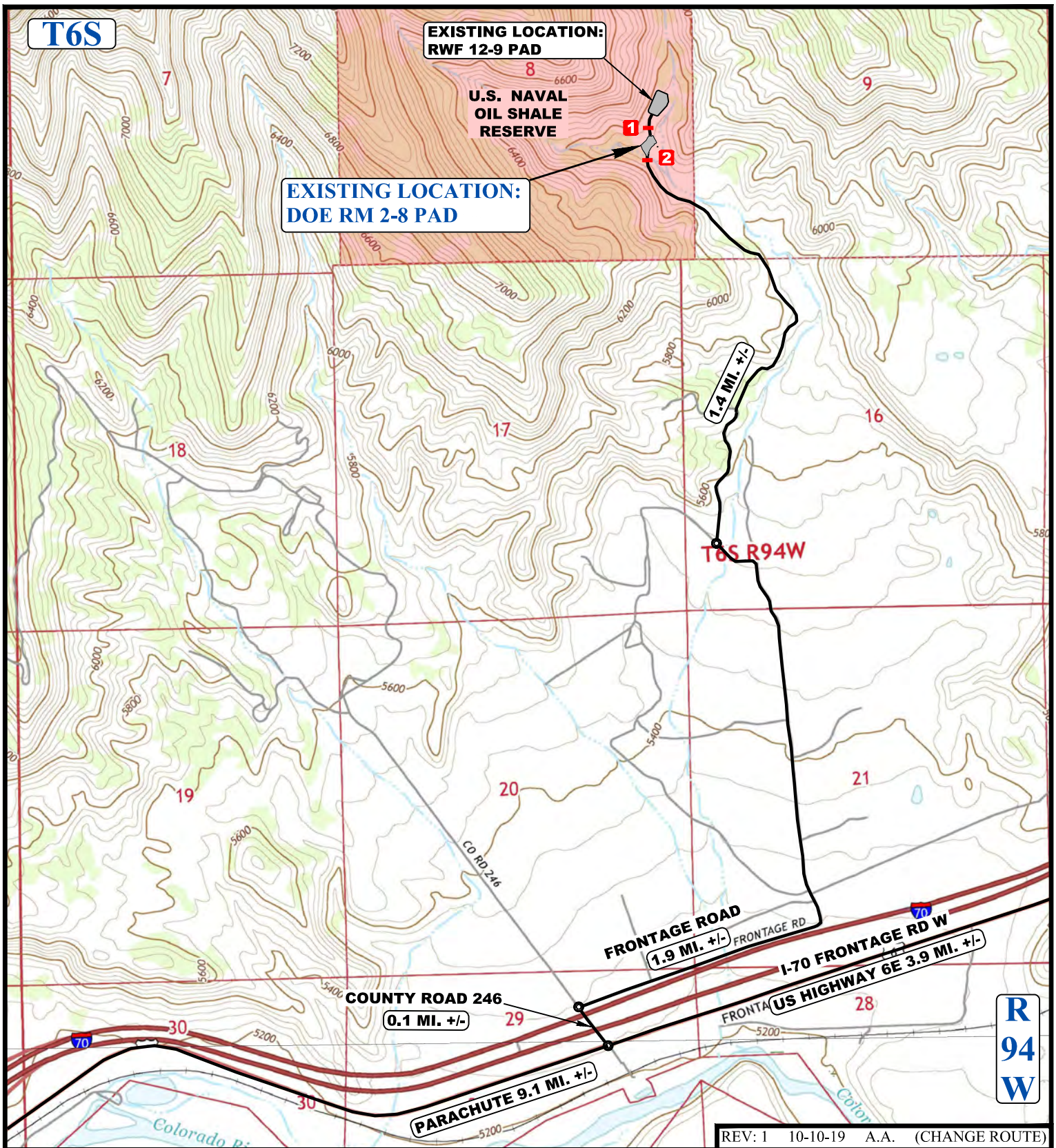
UELS, LLC
Corporate Office * 85 South 200 East
Vernal, UT 84078 * (435) 789-1017



TEP Rocky Mountain LLC

DOE RM 2-8 PAD
NE 1/4 SE 1/4, SECTION 8, T6S, R94W, 6th P.M.
GARFIELD COUNTY, COLORADO

SURVEYED BY	DAYTON SLAUGH, J.L.	08-05-19	SCALE
DRAWN BY	A.A.	08-05-19	1 : 100,000
ACCESS ROAD MAP			PLAT #3



NOTE: PARCEL DATA SHOWN HAS BEEN OBTAINED FROM VARIOUS SOURCES AND SHOULD BE USED FOR MAPPING, GRAPHIC AND PLANNING PURPOSES ONLY. NO WARRANTY IS MADE BY UINTAH ENGINEERING AND LAND SURVEYING (UELS) FOR ACCURACY OF THE PARCEL DATA.

LEGEND:

- EXISTING ROAD
- 1 EXISTING 24" CULVERT
- 2 EXISTING 60" CULVERT



TEP Rocky Mountain LLC

DOE RM 2-8 PAD
NE 1/4 SE 1/4, SECTION 8, T6S, R94W, 6th P.M.
GARFIELD COUNTY, COLORADO

SURVEYED BY	DAYTON SLAUGH, J.L.	08-05-19	SCALE
DRAWN BY	A.A.	08-05-19	1 : 24,000
ACCESS ROAD MAP			PLAT #3B



UELS, LLC
Corporate Office * 85 South 200 East
Vernal, UT 84078 * (435) 789-1017

REV: 1 10-10-19 A.A. (CHANGE ROUTE)