



# HighPoint Operating Corporation

GRINDE 01-64-05-6457B

API # 05-123-50642

## Production

December 14, 2019

Quote #: QUO-40035-D2R3T5

Execution #: EXC-23166-Q8C7X302



# HighPoint Operating Corporation

Attention: Mr. Matthew Schwartz | (303) 312-8142 | [mschwartz@hpres.com](mailto:mschwartz@hpres.com)

HighPoint Operating Corporation | 1099 18th St. | Denver, CO. 80202

---

Dear Mr. Matthew Schwartz,

Thank you for the opportunity to provide cementing services on this well. BJ Services strives to achieve complete customer satisfaction. If you have any questions regarding the services or data provided, please contact BJ Services at any time.

Sincerely,  
Jason Creel  
Field Engineer I | (307) 365-9038 | [jason.creel@bjservices.com](mailto:jason.creel@bjservices.com)

Field Office 1716 East Allison Rd., Cheyenne WY, 82007  
Phone: (307) 459-6487

Sales Office 999 18th St. Suite 1200 Denver, CO 80202  
Phone: (281) 408-2361

---

# BJ Cementing Treatment Report

SERVICE SUPERVISOR	William Silvester	COUNTY	WELD
DISTRICT	Cheyenne, WY	STATE / PROVINCE	CO
SERVICE	Cementing		

## WELL GEOMETRY

TYPE	ID (in)	OD (in)	WEIGHT (lb/ft)	MD (ft)	TVD (ft)	EXCESS (%)	GRADE
Previous Casing	6.37	7.00	23.00	7,479.00	6,693.00		J-55
Open Hole	6.13	0.00	0.00	17,191.00	6,693.00	10.00	
Casing	4.00	4.50	11.60	17,176.36	6,693.00		P-110

## HARDWARE

Bottom Plug Used?	No	Tool Depth (ft)	17,188.36
Top Plug Used?	No	Pipe Movement	None
Centralizers Used	No	Job Pumped Through	Manifold
Landing Collar Depth (ft)	17,175	Top Connection Thread	8 rd
Tool Type	DV Tool	Top Connection Size	4 1/2

## CIRCULATION PRIOR TO JOB

Well Circulated By	Rig	Lost Circulation Prior to Cement Job	No
Circulation Prior to Job	Yes	Solids Present at End of Circulation	No
Circulation Time (min)	60.00	Flare Prior to / during the Cement Job	No
Circulation Rate (bpm)	6.00	Gas Present	No
Circulation Volume (bbls)	360.00		

## TEMPERATURE

Ambient Temperature (°F)	37.00	Slurry Cement Temperature (°F)	81.00
Mix Water Temperature (°F)	72.00	Flow Line Temperature (°F)	130.00

## FLUID DETAILS

FLUID TYPE	FLUID NAME	DENSITY (ppg)	YIELD (Cu Ft/sk)	H <sub>2</sub> O REQ (gals/sk)	PLN TOP FLD (ft)	LENGTH (ft)	VOL (sk)	VOL (Cu Ft)	VOL (bbls)
Spacer / Pre Flush / Flush	Fresh Water	8.3300			581.00				40.0000
Tail Slurry	BJCem P50.6.01C	13.5000	1.5930	7.95	2,622.00	13,681.00	910	1450.0000	258.2000
Displacement 1	Retarded Water	8.3300			15,889.00			0.0000	20.0000
Displacement Final	Water + Chems	8.3300			0.00			0.0000	246.9000

FLUID TYPE	FLUID NAME	COMPONENT	CONCENTRATION	UOM
Tail Slurry	BJCem P50.6.01C	FOAM PREVENTER, FP-25	0.3000	BWOB
Tail Slurry	BJCem P50.6.01C	IntegraGuard GW-86	0.1000	BWOB
Tail Slurry	BJCem P50.6.01C	RETARDER, SR-20	0.2000	BWOB
Tail Slurry	BJCem P50.6.01C	Flyash (Rockies)	50.0000	PCT
Tail Slurry	BJCem P50.6.01C	IntegraCare EC-2	3.0000	BWOB
Tail Slurry	BJCem P50.6.01C	BONDING AGENT, BA-90	3.0000	LBS/SK
Tail Slurry	BJCem P50.6.01C	CEMENT, CLASS G	50.0000	PCT
Tail Slurry	BJCem P50.6.01C	FLUID LOSS, FL-24	0.4000	BWOB
Tail Slurry	BJCem P50.6.01C	EXTENDER, BENTONITE	4.0000	BWOB
Displacement Final	Water + Chems	BIOCIDE, BIOC11139W	0.0210	GPB
Displacement Final	Water + Chems	CORROSION INHIBITORS, CI-27	0.2100	GPB
Displacement Final	Water + Chems	OXYGEN SCAVENGER, OS-30	0.1680	GPB

## DISPLACEMENT AND END OF JOB SUMMARY

Did Float Hold?	Yes	Top Out Cement Spotted	No
Bump Plug	No	Lost Circulation During Cement Job	No
Were Returned Planned at Surface	No		

# BJ Cementing Event Log

Long String - Cheyenne, WY - William Silvester

SEQ	START DATE / TIME	EVENT	DENSITY (ppg)	PUMP RATE (bpm)	PUMP VOL (bbls)	PIPE PRESSURE (psi)	COMMENTS
1	12/14/2019 08:14	Callout					Callout
2	12/14/2019 09:00	STEACS Briefing					Pre Convoy Meeting Pretrip Load up Etc
3	12/14/2019 10:00	Depart for Location					Headed to location
4	12/14/2019 12:00	STEACS Briefing					Pre rig up meeting
5	12/14/2019 12:30	Rig Up					Rig up
6	12/14/2019 13:30	STEACS Briefing					Pre job meeting
7	12/14/2019 13:35	Pump Spacer	8.3300	4.00	40.00	1550.00	Pump 40 bbls Of Spacer
8	12/14/2019 14:14	Pressure Test				5500.00	Pressure test pump & lines
9	12/14/2019 14:15	Pumping Cement	13.5000	5.00	70.00	2000.00	Tail = 910 sks 1.5930 ft3/sk 7.95 gps = 258.2 bbls @ 13.5 ppg, Wet & Dry Samples Taken Good Returns
10	12/14/2019 14:38	Pumping Cement	13.5000	5.00	70.00	2000.00	Pump cement, good returns
11	12/14/2019 15:17	Drop Top Plug	13.5000	5.00	188.00	500.00	Drop top plug/wash pump & lines
12	12/14/2019 15:30	Pump Displacement	8.3300	8.00	266.90	2800.00	Start displacement, with biocide, os-30,ci-27 good returns
13	12/14/2019 16:30	Land Plug	8.3300	3.00	266.90	3800.00	Final circulation Pressure 2800 psi Bump Plug to 3800 Pump 1.5 bbls For wet shoe
14	12/14/2019 16:30	STEACS Briefing					Pre Rig Down meeting
15	12/14/2019 16:35	Rig Down					Rig down
16	12/14/2019 17:30	STEACS Briefing					Pre convoy meeting
17	12/14/2019 18:00	Leave Location	8.3300	3.00	266.90	3800.00	Final circulation Pressure 2800 psi Bump Plug to 3800 Pump 1.5 bbls For wet shoe

Client: HighPoint Operating Corporation

Well Name / API: GRINDE #01-64-05-6457B / 05-123-50642

Well 17191  
MD:



Quote #: QUO-40035-D2R3T5

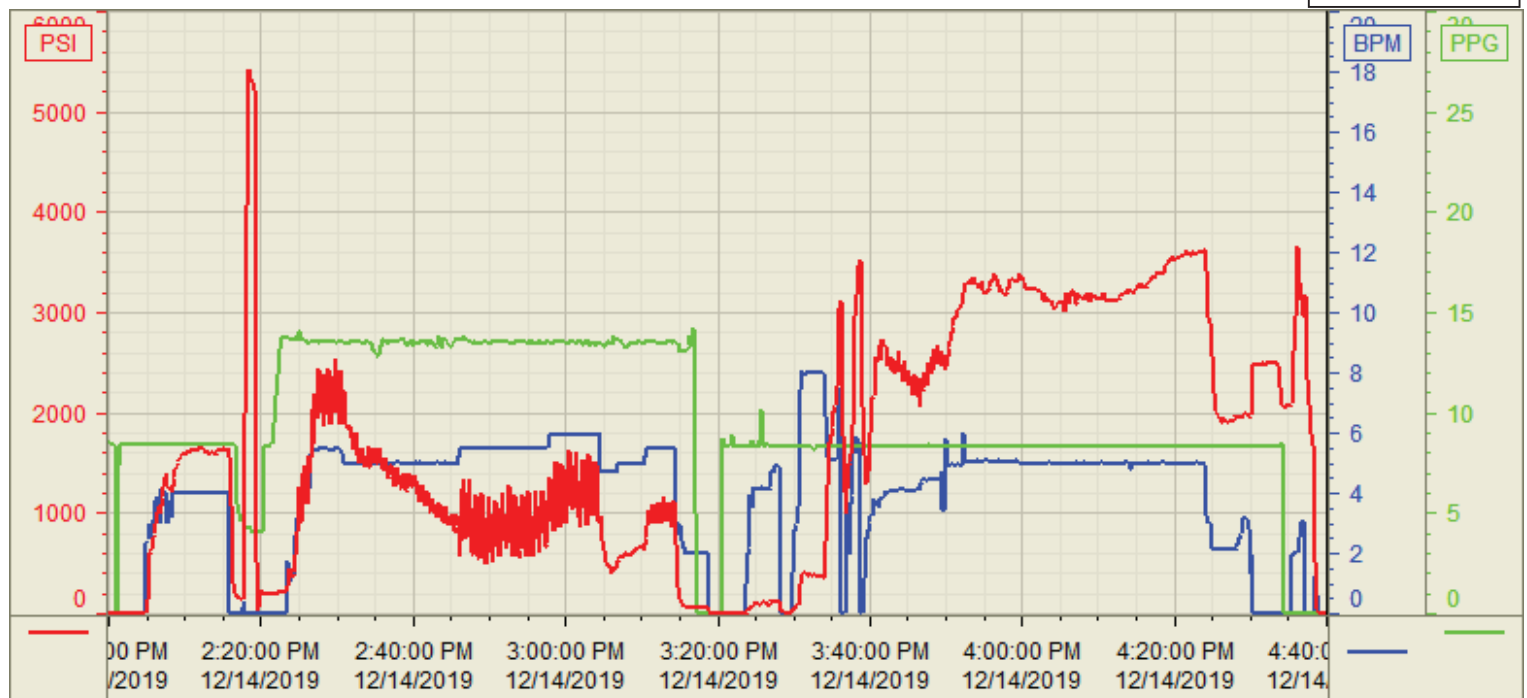
Plan #: ORD-23166-Q8C7X3

Execution #: EXC-23166-Q8C7X302

Customer: High Point  
Well Number: 01-64-05-6457B  
Lease Info: GRINDE



Print Date/Time  
12/14/2019 4:54:52 PM



	Name	Y value	X value/time stamp	Tag name Y
1	DS - Press (PSI)	-4.2 i.	12/14/2019 4:40:00 PM i.	Cementer\DS_DISCHARGE_PRESS_DIAL
2	Recirc - Density (PPG)	0.00	12/14/2019 4:40:02 PM	Cementer\DENSITY_ACTUAL_RATE
3	Combined Rate	0.00	12/14/2019 4:40:02 PM	Cementer\Flow_Combined
4				
5				

Source: Control1 4:54:46 PM