

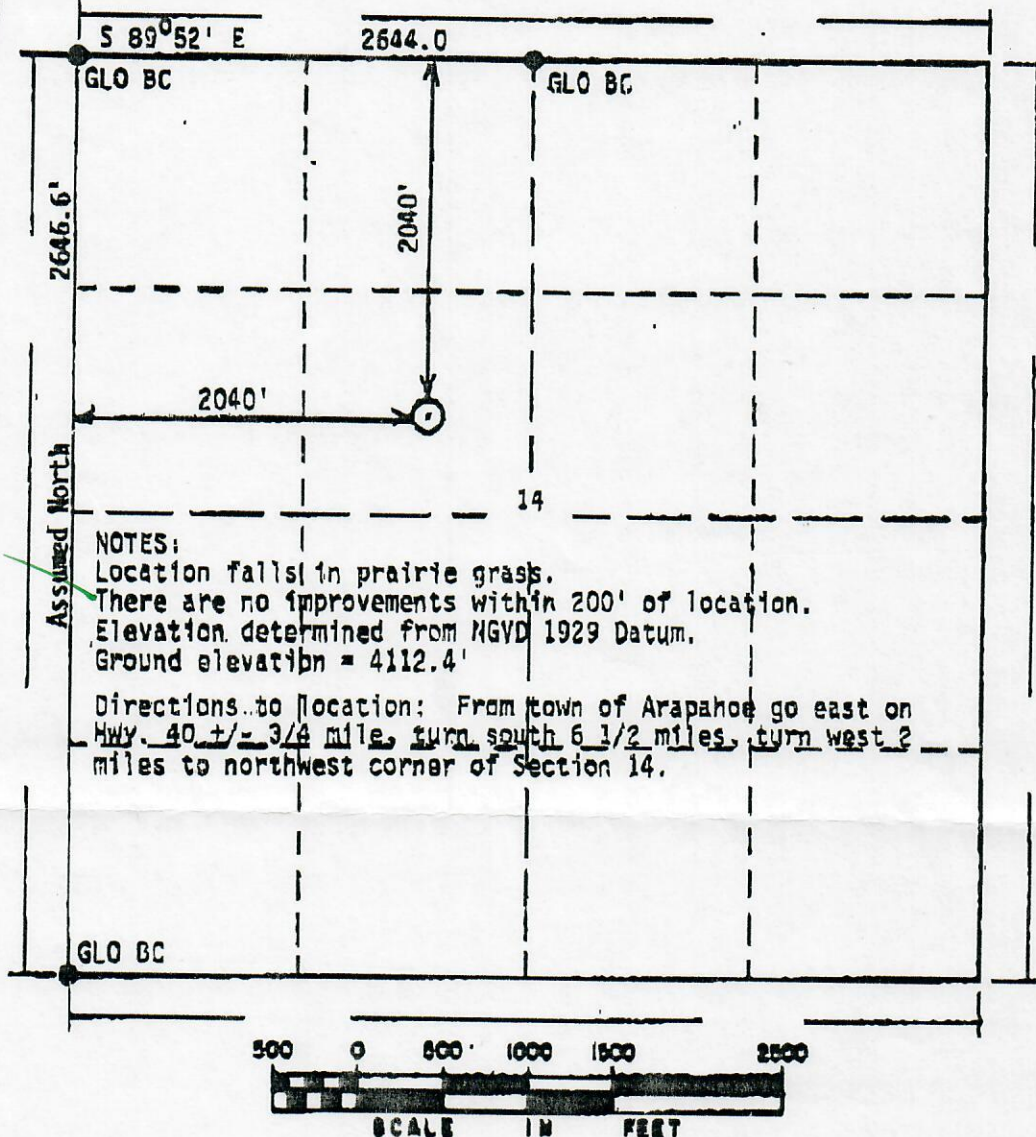
-Form PS 102B

POWERS ELEVATION CO., INC.
P.O. Box 440888
Aurora, CO 80044-0888
(303) 321-2217
FAX (303) 321-2218



ALL POWERS ELEVATION CO., INC.
elevations originate from
accepted U.S. Benchmarks

R. 43 W



BASIS OF BEARING: West Line of Section 14.

Powers Elevation Co., Inc. of Denver, Colorado has in accordance with a request from Bill Chatham for Amoco Production Company determined the location of #1-14 Avalanche

to be 2040' FNL & 2040' FWL

Section 14 , Township 15 South
Meridian,

Range 43 West of the Sixth Principal

Cheyenne County, Colorado

I hereby certify that this is an accurate representation of a correct survey showing the location of #1-14 Avalanche

Date: March 7, 1996

Licensed Land Surveyor No. 27610
State of Colorado



BEST IMAGE
AVAILABLE