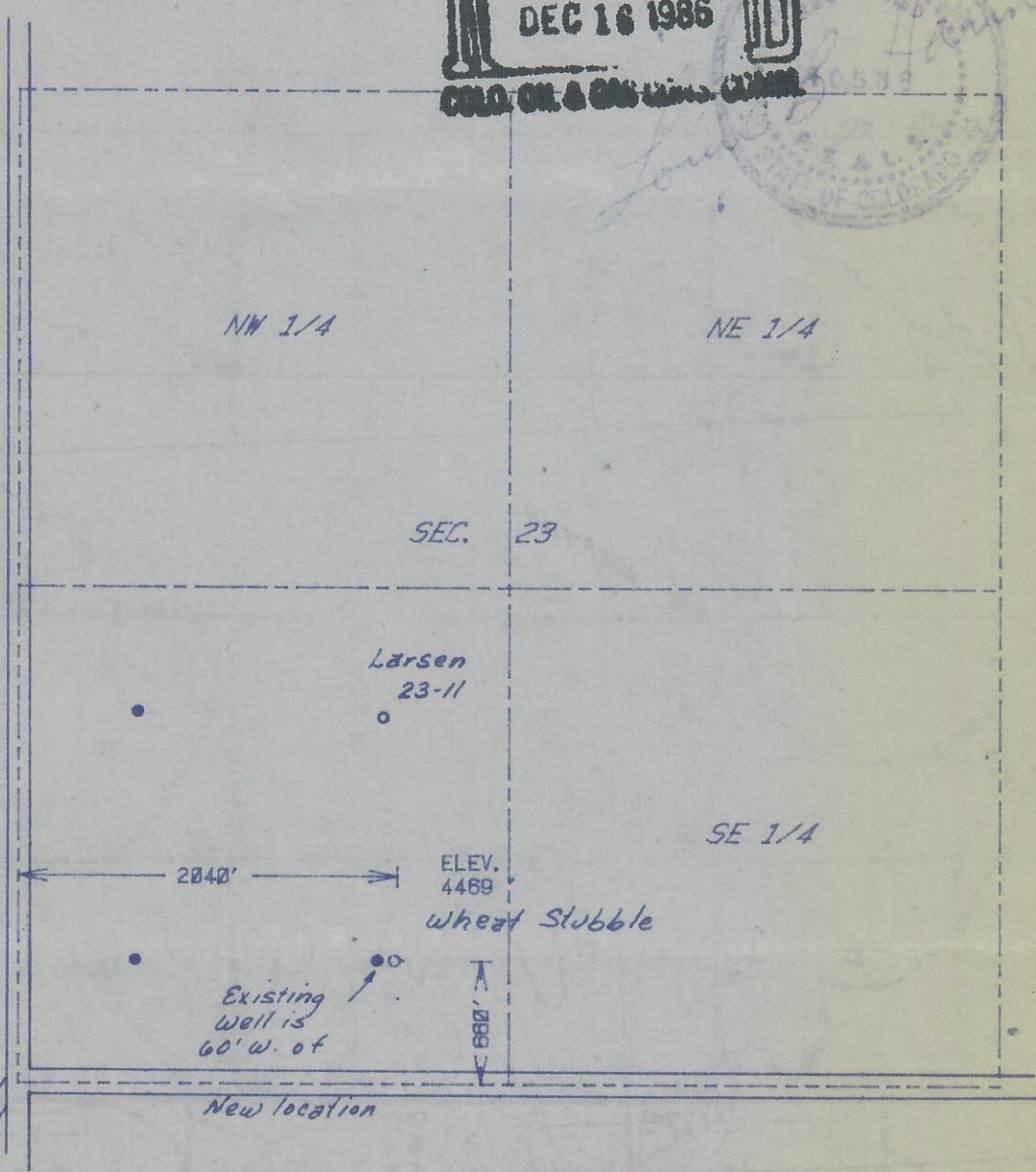




The accompanying plat is an accurate representation showing the location of a proposed well. This location may be described as a point 660 feet north of the south line, and 2040 feet east of the west line of Section 23, Township 15 S Range 46 W of T15S, R46W, CHEYENNE County, COLORADO. The surface elevation at this point is 4469 feet m.s.l.

RECEIVED  
DEC 16 1986  
COLD OIL & GAS CO. INC.

First view  
5.6 mi. N.



SCALE - 1"=1000'

BEST IMAGE  
AVAILABLE

- SURVEYED POINT
- REFERENCE STAKE ( 200 'S, 0 'E )
- SW 1/4 SEC. 23 , T 15 S, R 46 W

**HARMON**  
**ENGINEERING**  
**SERVICES**

LARSEN #23-14X

LEWIS & CLARK EXPLORATION

CHEYENNE CO., COLORADO

31 JULY 1984

BSP P61

2079-109



BEST IMAGE  
AVAILABLE

