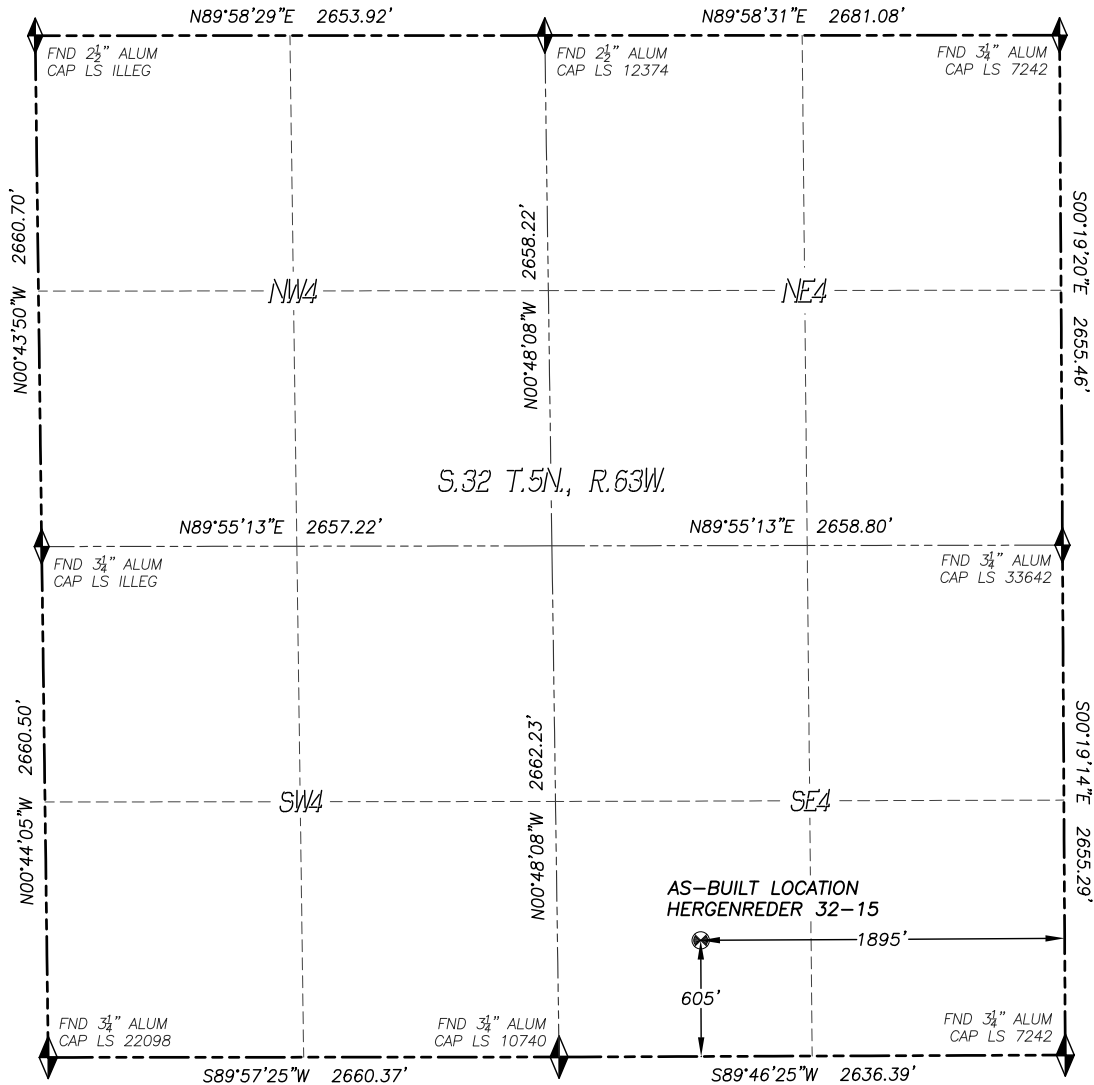


# WELL AS-BUILT SURVEY HERGENREDER 32-15

SECTION 32, TOWNSHIP 5 NORTH, RANGE 63 WEST OF THE 6TH P.M.

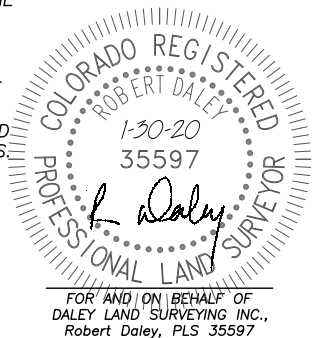


IN ACCORDANCE WITH A REQUEST FROM CONFLUENCE RESOURCES, DALEY LAND SURVEYING, INC. HAS DETERMINED THE SURFACE LOCATION OF THE HERGENREDER 32-15 WELL TO BE 605' FSL, 1895' FEL, AS MEASURED AT NINETY (90) DEGREES FROM THE SECTION LINES OF SECTION 32, TOWNSHIP 5 NORTH, RANGE 63 WEST, OF THE 6TH PRINCIPAL MERIDIAN, WELD COUNTY, COLORADO.

I HEREBY STATE THAT THIS WELL AS-BUILT SURVEY WAS PREPARED BY ME OR UNDER MY DIRECT SUPERVISION, THAT THE WORK WAS COMPLETED ON 1/29/2020 FOR AND ON BEHALF OF CONFLUENCE RESOURCES, AND THAT THIS MAP DOES NOT REPRESENT A BOUNDARY SURVEY, IT IS NOT A LAND SURVEY PLAT OR AN IMPROVEMENT SURVEY PLAT AND IT IS NOT TO BE RELIED UPON FOR THE ESTABLISHMENT OF FENCE, BUILDING OR OTHER FUTURE IMPROVEMENT LINES.

#### NOTES:

- 1) BEARINGS FOR THIS MAP ARE ASSUMED AND BASED UPON GPS OBSERVATIONS MADE BETWEEN MONUMENTS LOCATED AT THE EAST QUARTER CORNER AND THE SOUTHEAST CORNER OF SECTION 32, TOWNSHIP 5 NORTH, RANGE 63 WEST.
- 2) HORIZONTAL DATUM IS NAD83.
- 3) VERTICAL DATUM IS NAVD88 AND ORIGINATES FROM THE LOCAL C.O.R.S. NETWORK, UTILIZING THE GEOID12A MODEL.
- 4) SURFACE USE: AGRICULTURAL
- 5) INST. OPERATOR: KYLE DALEY
- 6) THE TOP OF THE WELL HEAD WAS LOCATED, ELEVATION IS TOP OF BURIED WELLHEAD.



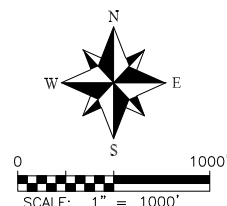
#### NAD 83 LATITUDE AND LONGITUDE

##### SURFACE LOCATION:

LATITUDE: N40.35034°  
LONGITUDE: W104.45719°  
ELEV: 4571'  
PDOP: 1.3  
QTR/QTR: SW4/SE4

#### LEGEND

- FOUND MONUMENT AS DESCRIBED
- PROPOSED WELL
- EXISTING WELL
- BOTTOM HOLE
- ABANDONED WELL
- CALCULATED POSITION



# LOCATION PICTURES

## HERGENREder 32-15

SECTION 32, TOWNSHIP 5 NORTH, RANGE 63 WEST OF THE 6TH P.M.

DATE: 1/29/20



LOOKING NORTH



LOOKING WEST



LOOKING EAST



LOOKING SOUTH