

CARLSON 42-18

2015-07-06 16:03

Tension (lbF)

FEET

1:240

3' AMPLITUDE (mV)

0.0 100.0

FREE PIPE TIME (μs)

200.0 1200.0

MIN RADIAL AMP (mV)

0.0 100.0

RADIAL MAPPING (mV)

0.00 10.00

COLLAR LOCATOR

0.0 10.0

GAMMA RAY

0.0 120.0

Pass No. 18

AMPLITUDE X 5 (mV)

0.0 20.0

3' TRAVEL TIME (μs)

800.0 150.0

Logging Up
ShutIn

VARIABLE DENSITY (μs)

200.00 1200.00

File FINAL.pre

MAX RADIAL AMP (mV)

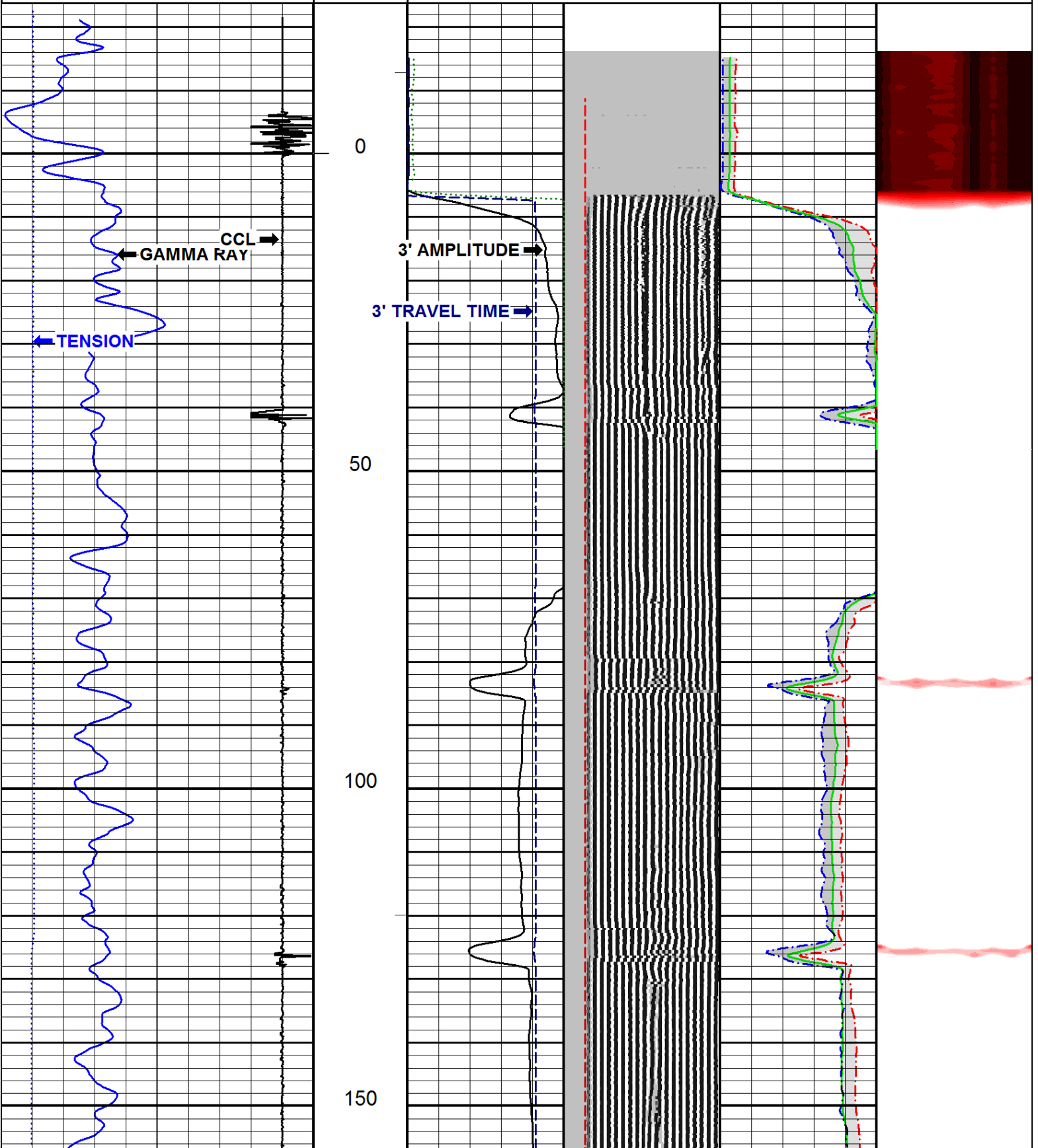
0.0 100.0

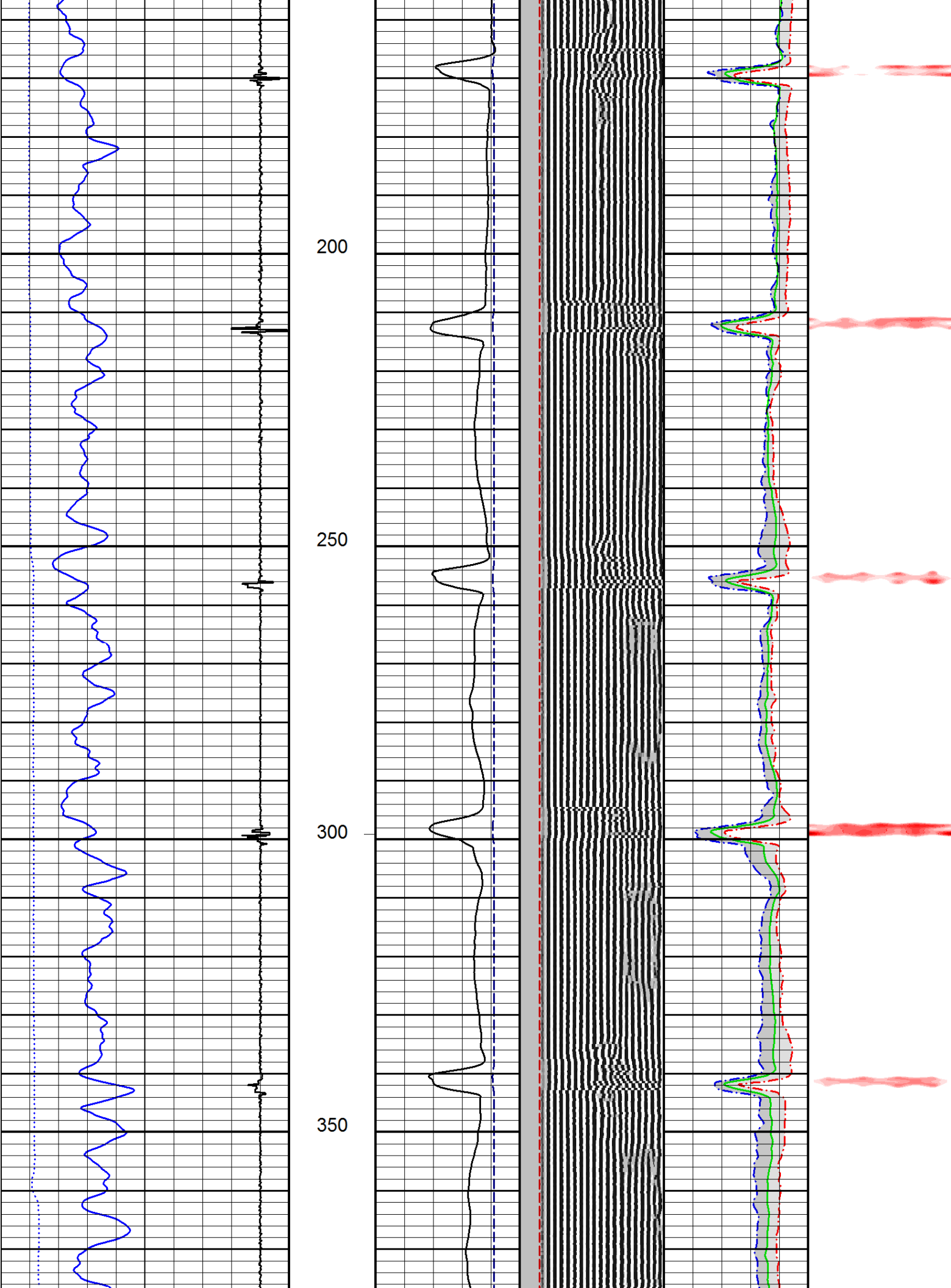
AVG RADIAL AMP (mV)

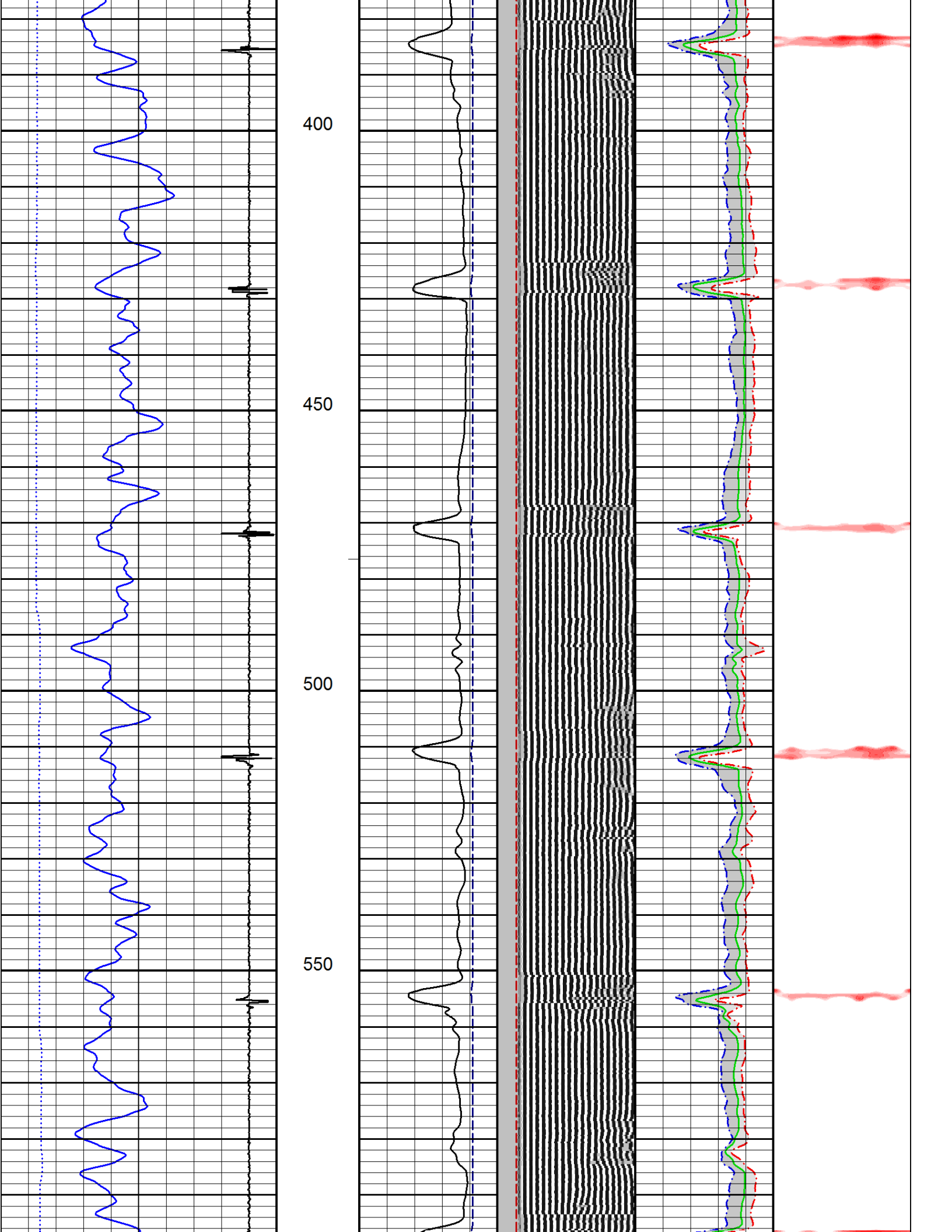
0.0 100.0

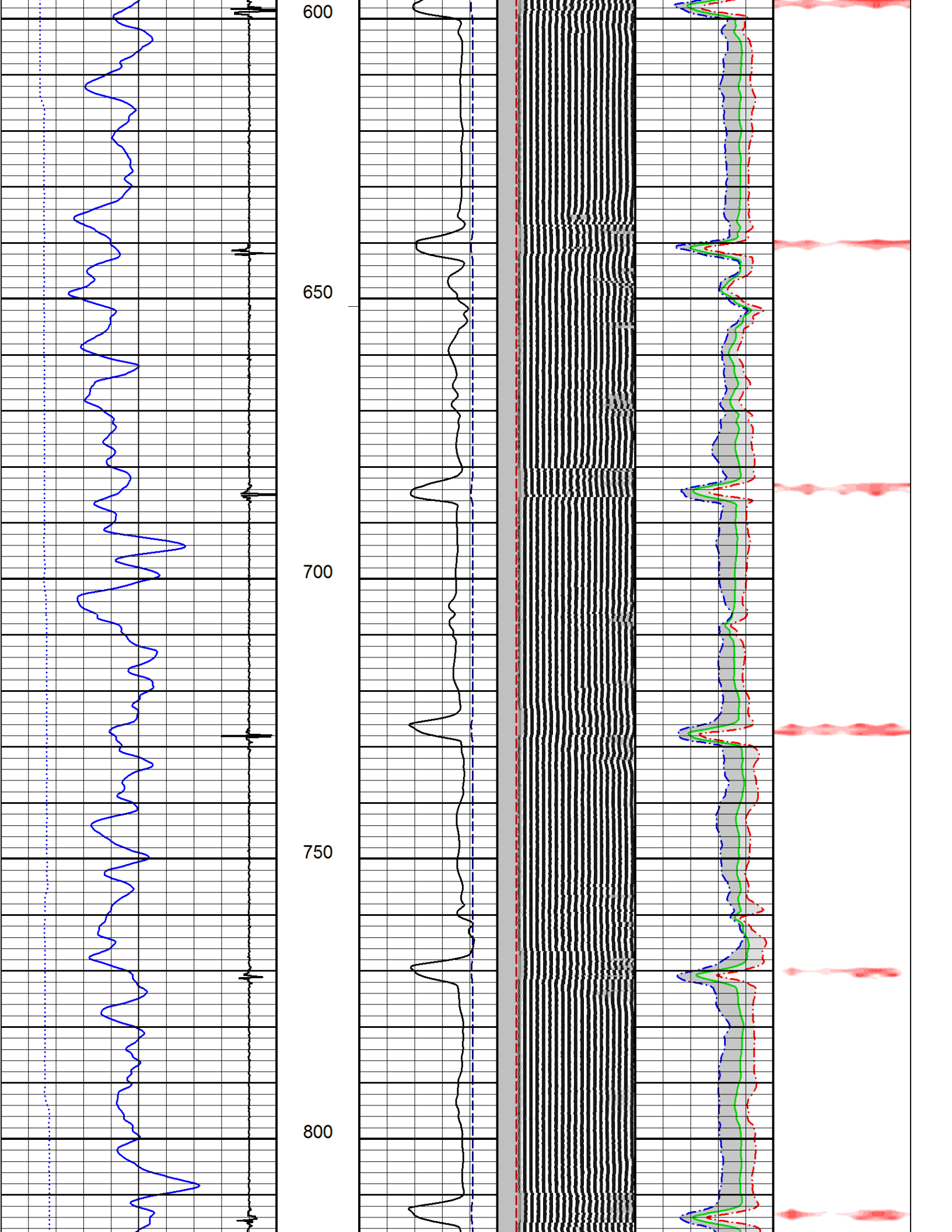
-23.70

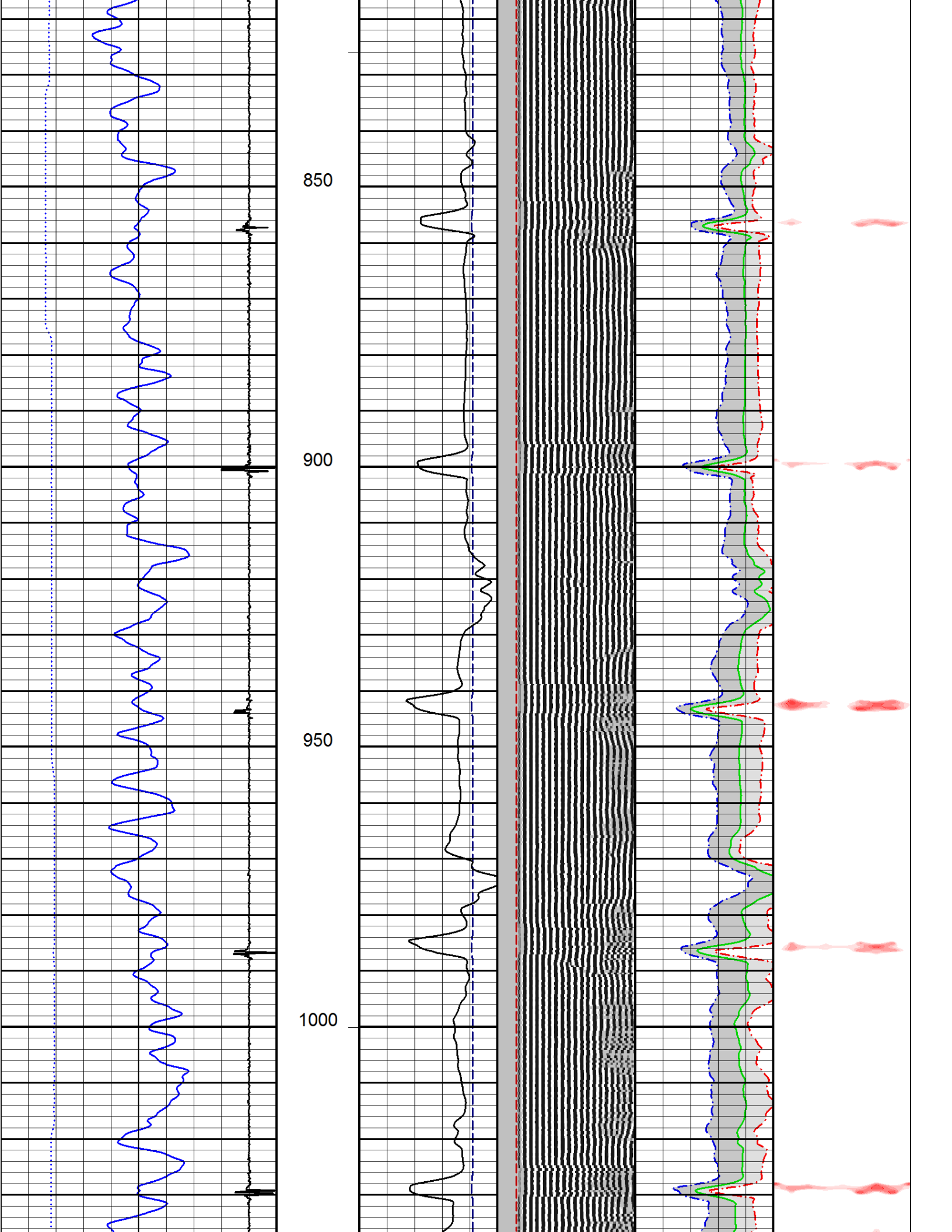
130503

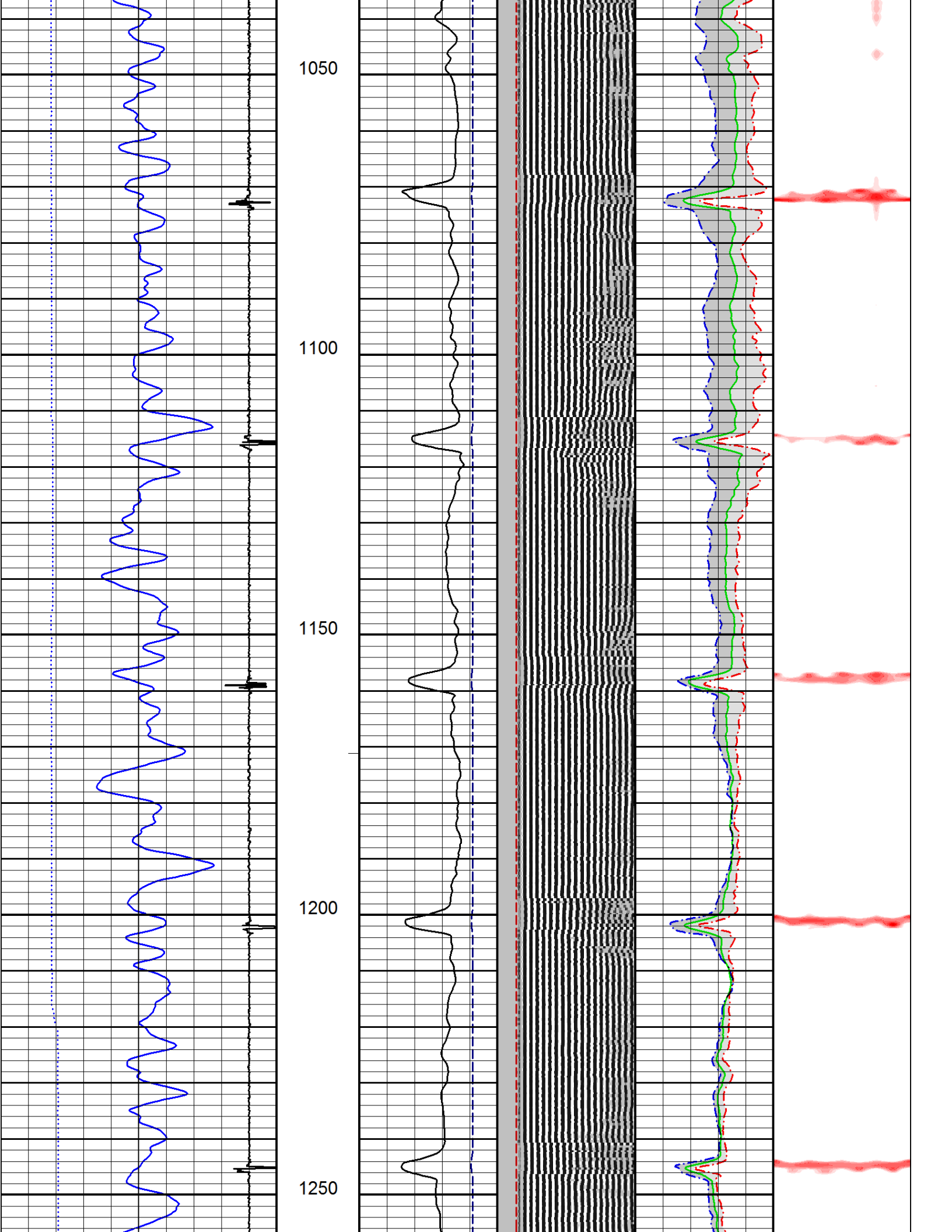


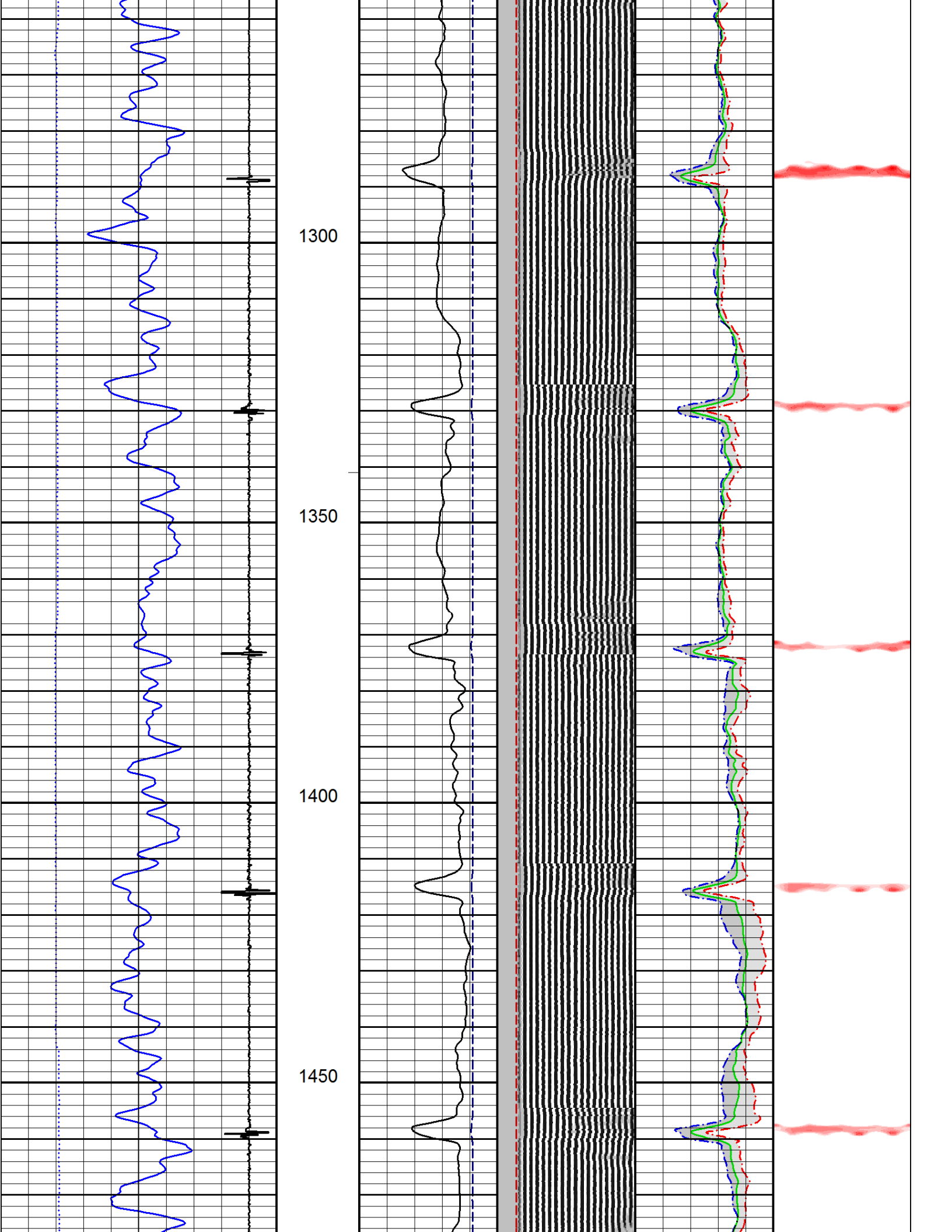


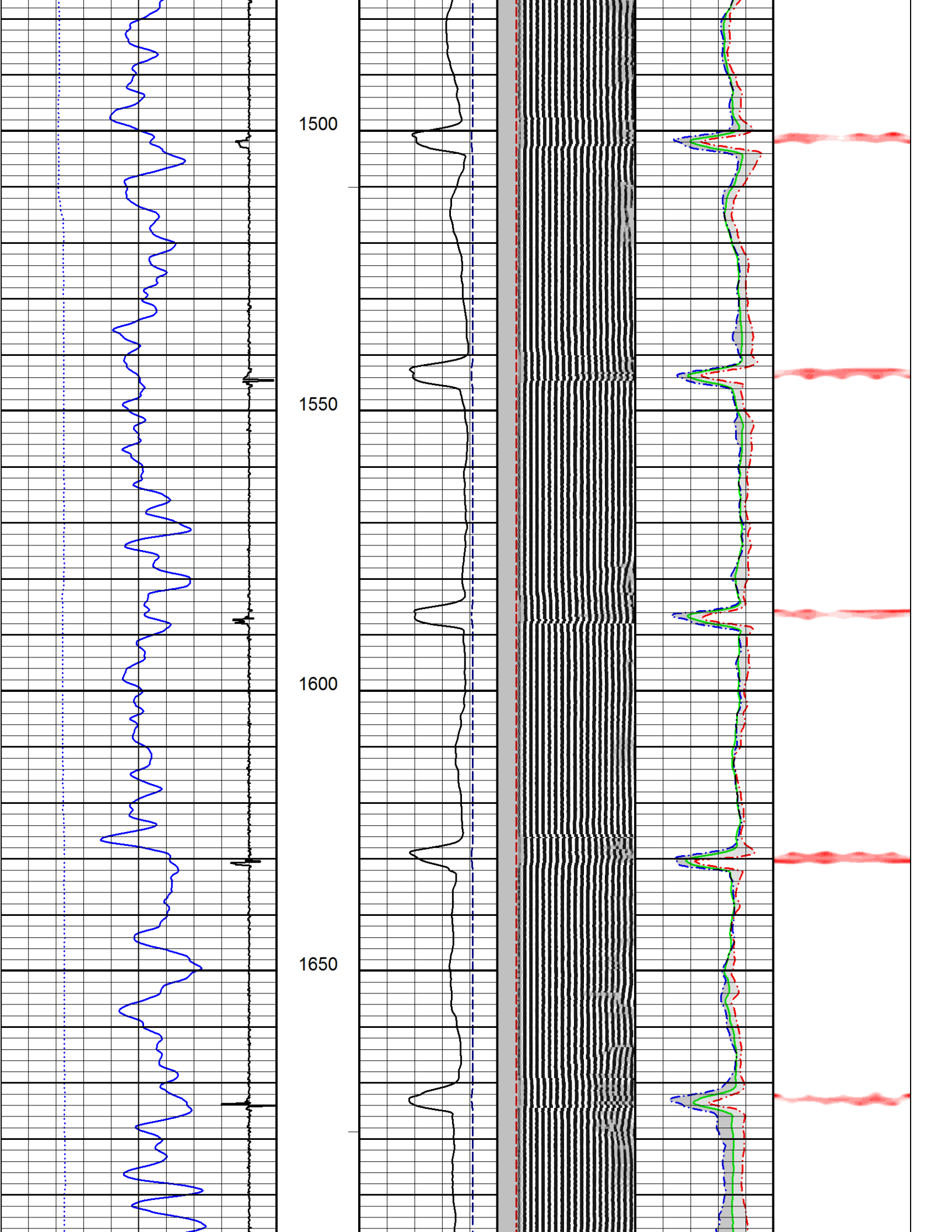


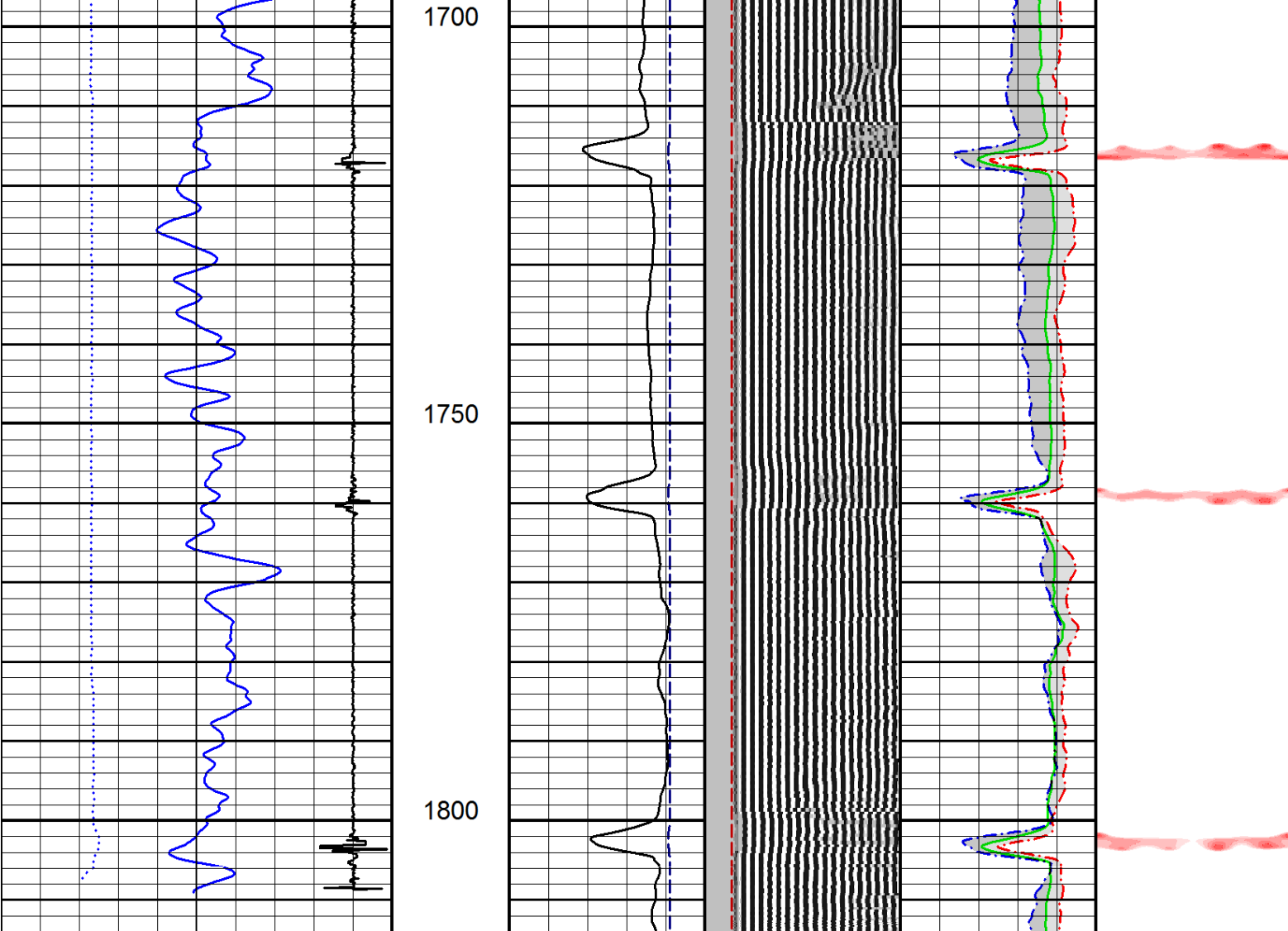












<div>2015-07-06 16:03</div> <div>Tension (lbF)</div> <div>0.002000.00</div> <div>COLLAR LOCATOR</div> <div>0.010.0</div> <div>GAMMA RAY</div> <div>0.0120.0</div> <div>Pass No. 18</div>	<div>1814.28</div> <div>FEET</div> <div>1:240</div>	<div>3' AMPLITUDE (mV)</div> <div>0.0100.0</div> <div>FREE PIPE TIME (μs)</div> <div>200.01200.0</div> <div>MIN RADIAL AMP (mV)</div> <div>0.0100.0</div> <div>RADIAL MAPPING (mV)</div> <div>0.0010.00</div> <div>AMPLITUDE X 5 (mV)</div> <div>0.020.0</div> <div>VARIABLE DENSITY (μs)</div> <div>200.001200.00</div> <div>MAX RADIAL AMP (mV)</div> <div>0.0100.0</div> <div>3' TRAVEL TIME (μs)</div> <div>800.0150.0</div> <div>AVG RADIAL AMP (mV)</div> <div>0.0100.0</div> <div>Logging Up</div> <div>File FINAL.pre</div> <div>ShutIn</div> <div>130503</div>
--	---	---