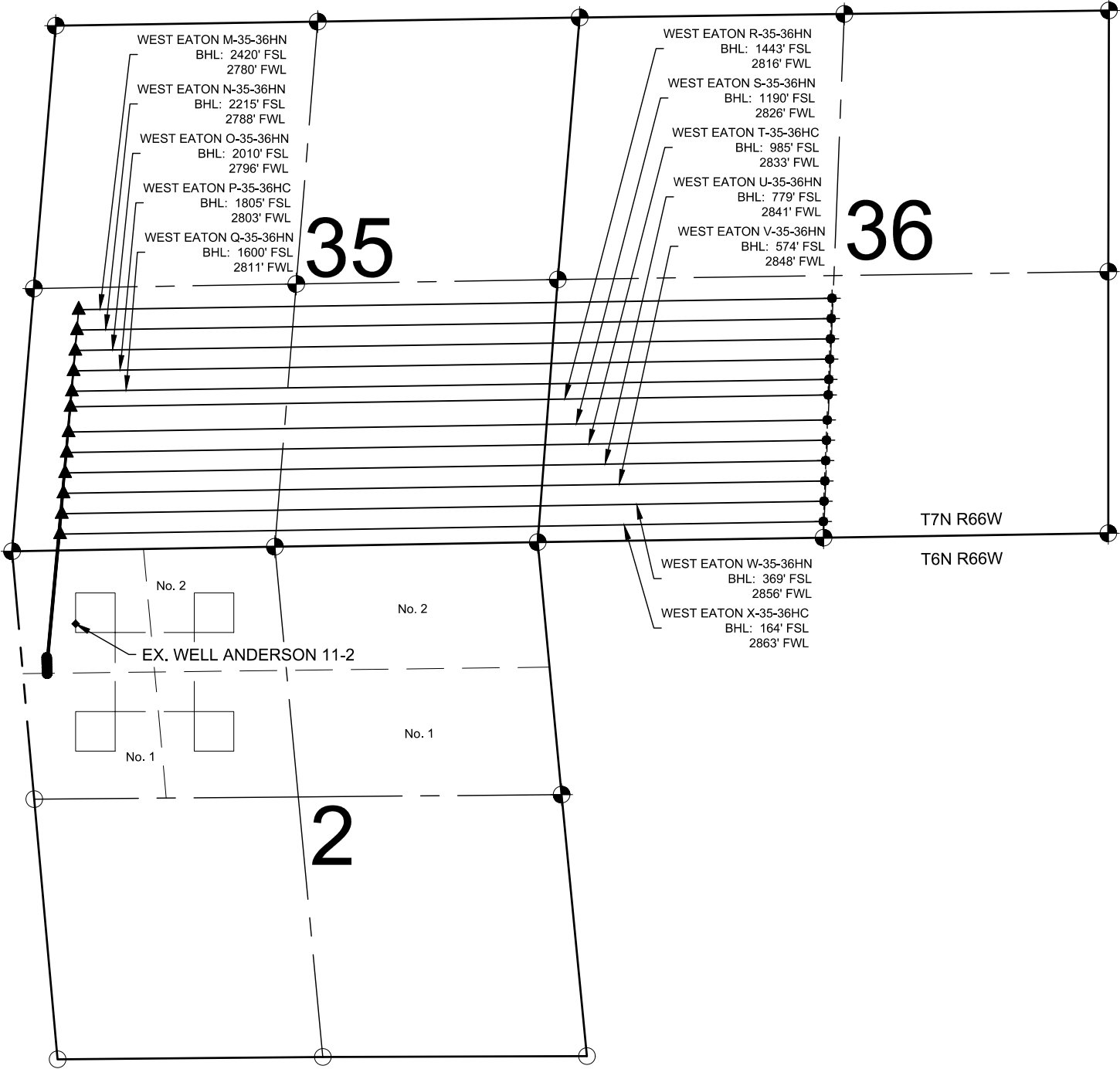


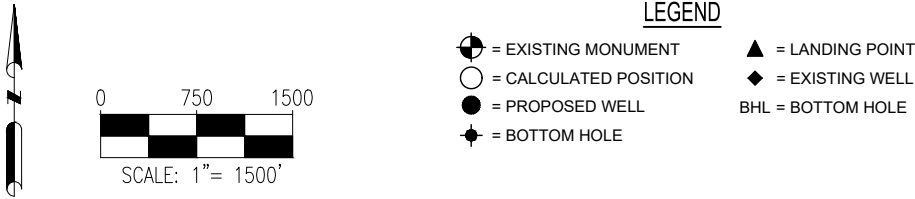
WEST EATON 2-A PAD
MULTI-WELL PLAN



- NOTES:
1. THIS FIELD SURVEY CONFORMS TO THE MINIMUM STANDARDS SET BY THE COGCC, RULE NO. 215
 2. ALL DISTANCES AND BEARINGS SHOWN HEREON ARE GROUND VALUES AS GPS MEASURED IN THE FIELD, WITH TIES TO WELLS MEASURED PERPENDICULAR TO LINES SHOWN HEREON. THIS LOW DISTORTION PROJECTION (LDP) IS BASED ON THE NORTH AMERICAN DATUM OF 1983, U.S. SURVEY FOOT WITH A LATITUDE ORIGIN OF 40.481168°N, A CENTRAL MERIDIAN LONGITUDE OF 104.773359°W, AND A SCALE FACTOR ON THE CENTRAL MERIDIAN OF 1.000221 (EXACT). THE LDP BASIS OF BEARINGS IS GEODETIC NORTH.
 3. FIELD VERIFICATION OF MONUMENTS COMPLETED WITHIN 1 YEAR OF SIGNATURE DATE, UNLESS OTHERWISE NOTED.

- NOTES:
- WEST EATON M-35-36HN TO BE AT 1079' FNL & 254' FWL.
BOTTOM HOLE AT 2420' FSL & 2780' FWL, SEC. 36, T7N, R66W.
- WEST EATON N-35-36HN TO BE AT 1094' FNL & 253' FWL.
BOTTOM HOLE AT 2215' FSL & 2788' FWL, SEC. 36, T7N, R66W.
- WEST EATON O-35-36HN TO BE AT 1108' FNL & 252' FWL.
BOTTOM HOLE AT 2010' FSL & 2796' FWL, SEC. 36, T7N, R66W.
- WEST EATON P-35-36HC TO BE AT 1124' FNL & 251' FWL.
BOTTOM HOLE AT 1805' FSL & 2803' FWL, SEC. 36, T7N, R66W.
- WEST EATON Q-35-36HN TO BE AT 1139' FNL & 250' FWL.
BOTTOM HOLE AT 1600' FSL & 2811' FWL, SEC. 36, T7N, R66W.
- WEST EATON R-35-36HN TO BE AT 1154' FNL & 249' FWL.
BOTTOM HOLE AT 1443' FSL & 2816' FWL, SEC. 36, T7N, R66W.
- WEST EATON S-35-36HN TO BE AT 1169' FNL & 248' FWL.
BOTTOM HOLE AT 1190' FSL & 2826' FWL, SEC. 36, T7N, R66W.
- WEST EATON T-35-36HC TO BE AT 1184' FNL & 247' FWL.
BOTTOM HOLE AT 985' FSL & 2833' FWL, SEC. 36, T7N, R66W.
- WEST EATON U-35-36HN TO BE AT 1199' FNL & 246' FWL.
BOTTOM HOLE AT 779' FSL & 2841' FWL, SEC. 36, T7N, R66W.
- WEST EATON V-35-36HN TO BE AT 1214' FNL & 245' FWL.
BOTTOM HOLE AT 574' FSL & 2848' FWL, SEC. 36, T7N, R66W.
- WEST EATON W-35-36HN TO BE AT 1229' FNL & 244' FWL.
BOTTOM HOLE AT 369' FSL & 2856' FWL, SEC. 36, T7N, R66W.
- WEST EATON X-35-36HC TO BE AT 1244' FNL & 243' FWL.
BOTTOM HOLE AT 164' FSL & 2863' FWL, SEC. 36, T7N, R66W.

ANDERSON 11-2 (EXISTING) IS AT 745' FNL & 576' FWL.



FIELD DATE:
04-22-19

DRAWING DATE:
07-22-19

BY:
SJH

CHECKED:
JAG

WELL NAME:
WEST EATON 2-A PAD

SURFACE LOCATION:
LOT 2 NW 1/4 SEC. 2, T6N, R66W, 6TH P.M.
WELD COUNTY, COLORADO

PREPARED FOR:

BAYSWATER
EXPLORATION AND PRODUCTION, LLC