



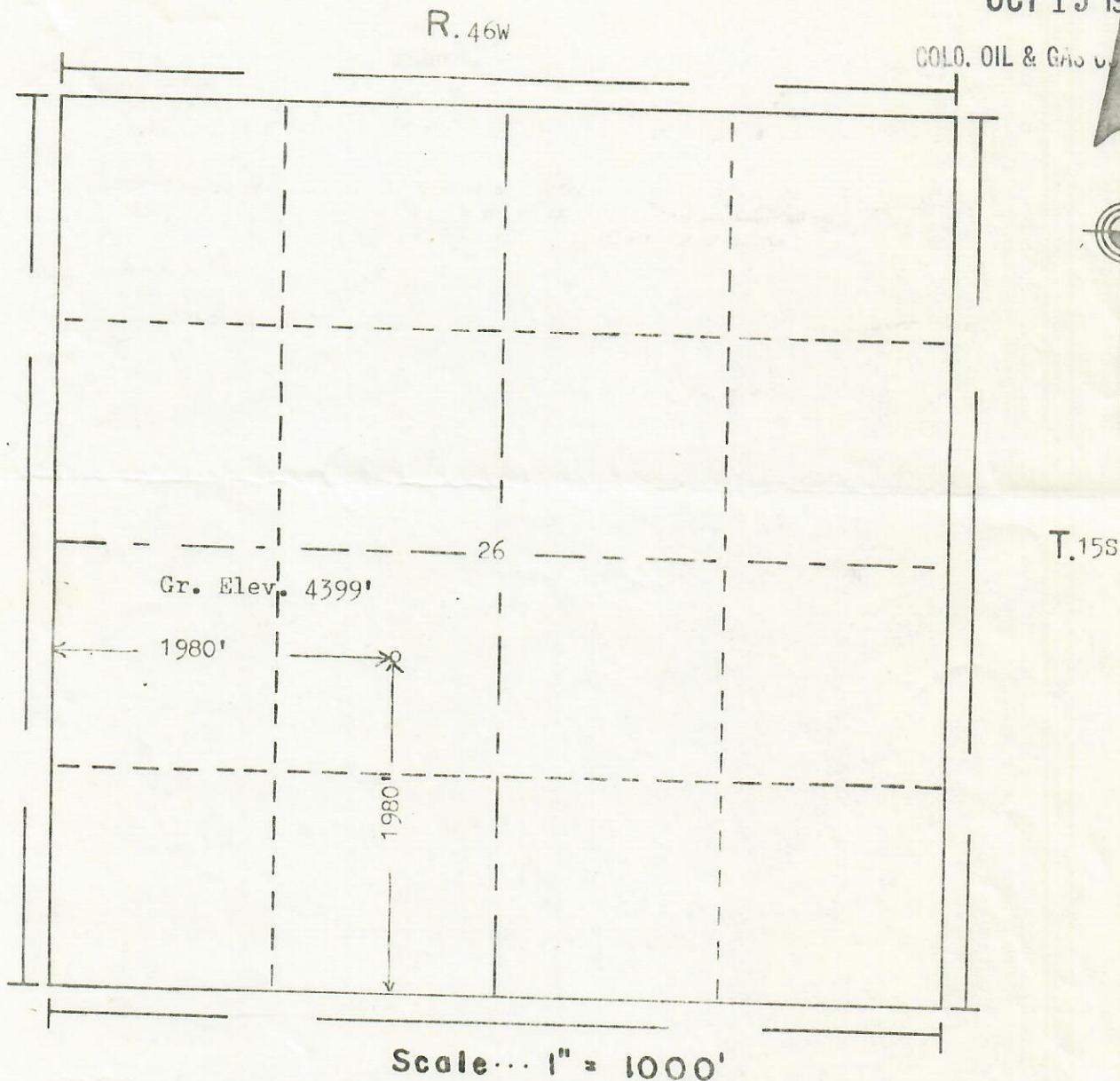
FORM F-106

BEST IMAGE  
AVAILABLE

RECEIVED

OCT 15 1981

COLO. OIL &amp; GAS COM. COMM.



Powers Elevation of Denver, Colorado  
has in accordance with a request from Mr. Niebrugg  
for Lewis & Clark Exploration  
determined the location of No. 1 Gillette  
to be C-NE-SW Section 26 Township 15S  
Range 46W of the 6th Principal Meridian  
Cheyenne County, Colorado

I hereby certify that this plat is an  
accurate representation of a correct  
survey showing the location of

Date: 9-23-81

Billy D. Holladay  
Licensed Land Surveyor No 2853  
State of Colorado

