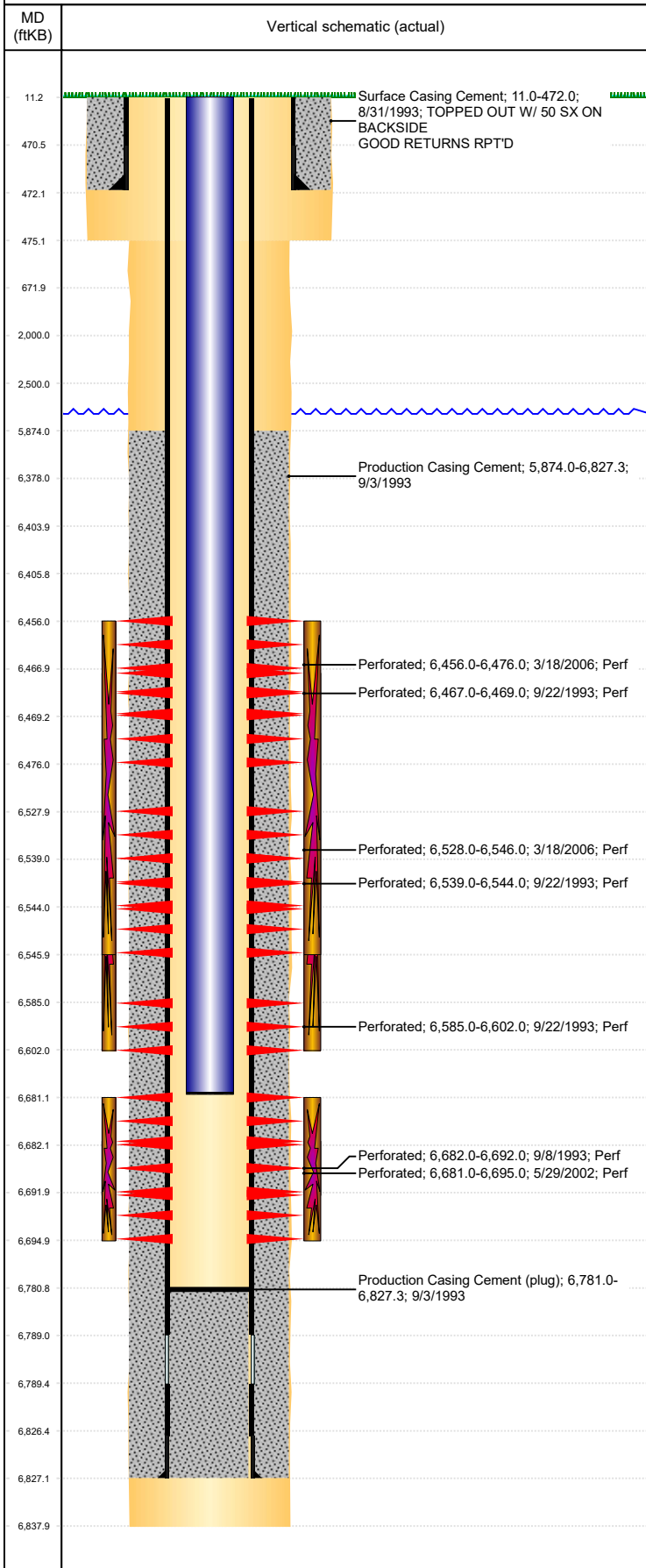


Well Name: FRANK 12-02

VERTICAL, ORIGINAL HOLE, 2/10/2020 10:32:07 AM



Well Header									
API 05-123-17316		Business Unit DJ BASIN			District 15		Well Config VERTICAL		
KB - GL / MSL (ft... 11.00		Spud Date 8/31/1993		P & A Date		Well Production Status PR			SoRT No
Comment commingled w/7-4 9/01,push AFP to 6781 4/06									
WELLHEAD IS 5000# WP & 3000# BACKSIDE VALVE RATING									
Surface Location (Congressional)									
Qtr 3 NW	Qtr 4 NE	Section 12	Twنشp 4	Twنش... N	Range 64	Rng E/... W	Actual Latitude (°) 40.33182270	Actual Longitude (°) -104.49662105	
Wellbore Sections									
Section Des			Size (in)			Act Top, MD (ftKB)		Act Btm, MD (ftKB)	
SURFACE			12 1/4			11		475	
PRODUCTION			7 7/8			475		6,838	
Casing Strings									
Csg Des			Run Date		OD (in)	Wt/Len (lb/ft)	Grade	Top, MD (ftKB)	MD (ftKB)
Surface			8/31/1993		8 5/8	23.00	M-50	11.0	472.0
Production			9/3/1993		4 1/2	11.60	M-75	11.0	6,827.3
Cement									
Des					Start Date		Top (ftKB)		Btm (ftKB)
Surface Casing Cement					8/31/1993		11.0		472.0
Production Casing Cement					9/3/1993		5,874.0		6,827.3
Zone Statuses									
Zone Name	Status Date	Status	Fluid Type	Job				Prod Method	
NIOBRARA	11/6/1993	PR		DRILLING/COMPLETION - ORIGINAL, 8/31/1993...					
NIOBRARA	3/29/2006	PR		RE-FRAC, 3/15/2006 00:00					
CODELL	11/6/1993	PR		DRILLING/COMPLETION - ORIGINAL, 8/31/1993...					
CODELL	6/25/2002	PR		RE-FRAC, 5/28/2002 00:00					
Perforation Data									
Linked Zone		Bnch/Stg	Entered Shot Total	Top (ftKB)		Btm (ftKB)		Date	
NIOBRARA, ORIGINAL HOLE		A	120	6,456.00		6,476.00		3/18/2006	
NIOBRARA, ORIGINAL HOLE			4	6,467.00		6,469.00		9/22/1993	
NIOBRARA, ORIGINAL HOLE			108	6,528.00		6,546.00		3/18/2006	
NIOBRARA, ORIGINAL HOLE		B	12	6,539.00		6,544.00		9/22/1993	
NIOBRARA, ORIGINAL HOLE		C	8	6,585.00		6,602.00		9/22/1993	
CODELL, ORIGINAL HOLE			56	6,681.00		6,695.00		5/29/2002	
CODELL, ORIGINAL HOLE			20	6,682.00		6,692.00		9/8/1993	
Stimulation Intervals									
Zone				Start Date		Top (ftKB)		Btm (ftKB)	
NIOBRARA, ORIGINAL HOLE				3/28/2006		6,456.0		6,546.0	
NIOBRARA, ORIGINAL HOLE				9/24/1993		6,467.0		6,602.0	
CODELL, ORIGINAL HOLE				6/12/2002		6,681.0		6,695.0	
CODELL, ORIGINAL HOLE				9/17/1993		6,682.0		6,692.0	
Other In Hole									
Run Date		Des				OD (in)	Top (ftKB)		Btm (ftKB)
4/6/2018		Plunger Lift				1 7/8			
Logs									
Date		Type					Top, MD (ftKB)		Btm, MD (ftKB)
9/3/1993		COMPENSATED DENSITY					4,070.0		6,835.0
9/3/1993		INDUCTION					472.0		6,835.0
9/8/1993		CBL/CCL/GR					5,600.0		6,774.0
3/23/2011		GYRO					11.0		6,600.0
Plug Back Total Depths									
Date		Type		Com					Depth (ftKB)
6/21/2002		FILL		TAGGED FILL					6,751.0
4/17/2006		PLUG REMNANTS		DRILL OUT SMITH 10K PLUG AND TAG FILL @ 6781'					6,781.0