

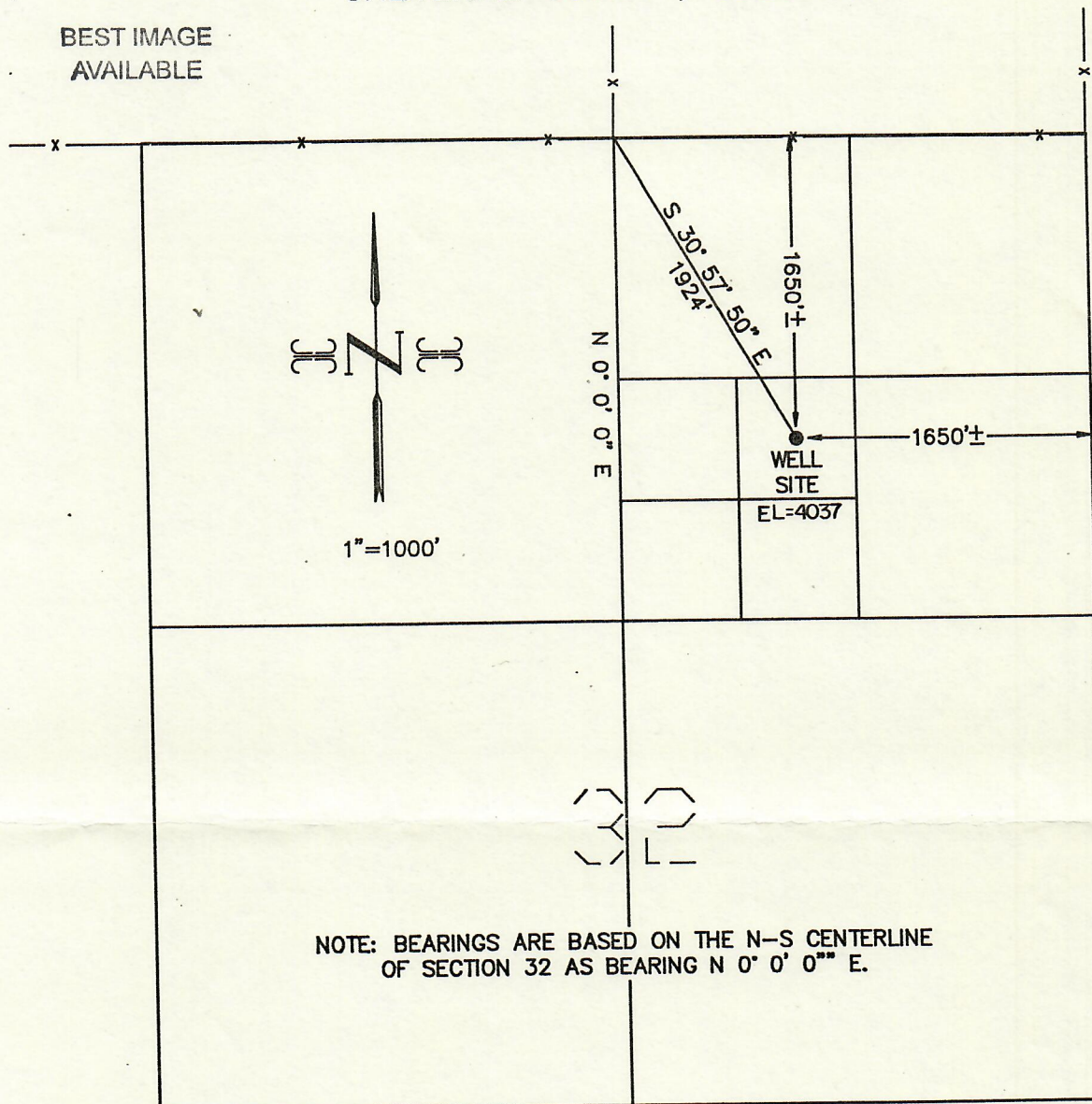


99999999

017-06792  
OIL WELL LOCATION

FEB 26 1988

NE1/4, SW1/4, NE1/4, SECTION 32, COLO. OIL & GAS CONS. COMM.  
TOWNSHIP 15 SOUTH, RANGE 42 WEST, OF THE 6TH P.M.  
CHEYENNE COUNTY, COLORADO

BEST IMAGE  
AVAILABLE

NOTE: BEARINGS ARE BASED ON THE N-S CENTERLINE  
OF SECTION 32 AS BEARING N 0° 0' 0" E.

I HEREBY CERTIFY THAT THIS WELL LOCATION SURVEY WAS MADE BY ME ON FEBRUARY 21, 1988, AND THAT SAID WELL LOCATION LIES S 30° 57' 50" E, A DISTANCE OF 1924 FEET FROM THE NE1/4 CORNER OF SECTION 32, TOWNSHIP 15 SOUTH, RANGE 42 WEST OF THE 6TH P.M., CHEYENNE COUNTY, COLORADO, AND LIES ENTIRELY WITHIN THE NE1/4, SW1/4, NE1/4 OF SAID SECTION 32, AS DEPICTED HEREON. THIS SURVEY WAS BASED ON BOUNDARY EVIDENCE FOUND, AND NO MONUMENTS WERE SET.

*Timothy P. Fowler*  
TIMOTHY P. FOWLER

COLO. L.S. #23041

PREPARED BY:  
SUTHERLAND, INC.  
2140 SOUTH IVANHOE STREET  
SUITE 210  
DENVER, COLORADO 80222  
TEL (303) 759-0951



00500102

JOB #880204

