



00208618

SECTION 5

T. 6 N.-R. 81 W., 6th P. M.

JACKSON COUNTY, COLORADO

RECEIVED

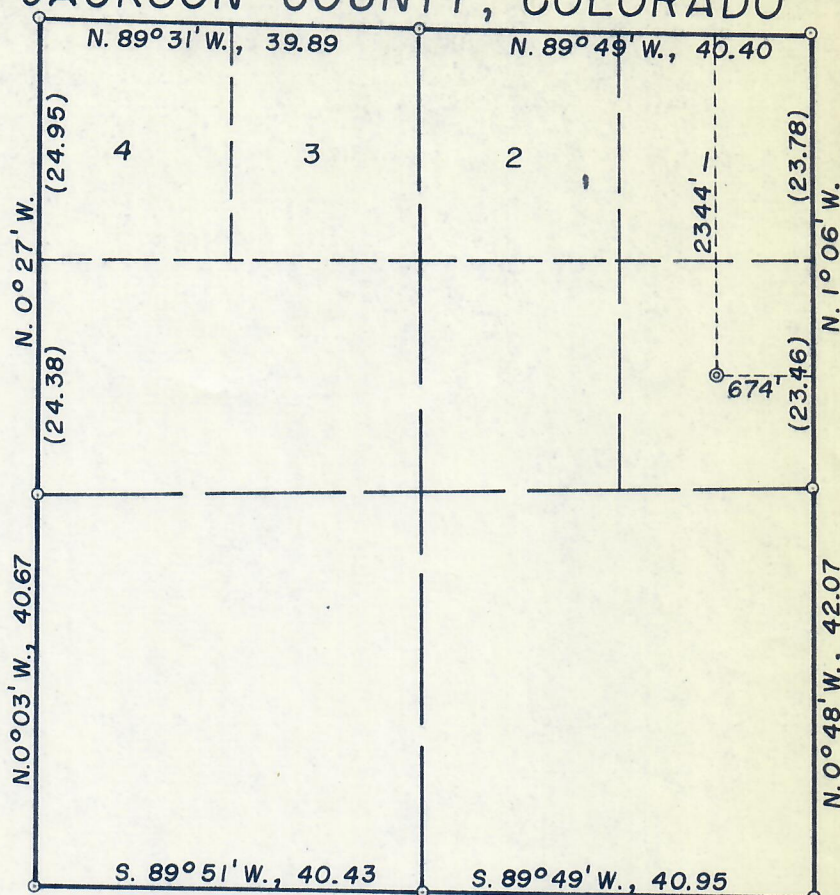
MAY 17 1972

COLO. OIL & GAS CONS. COMM.



SCALE

1" = 20 Chains

DISTANCES ARE EX-
PRESSED IN CHAINS
EXCEPT AS INDICATED.

LEGEND

- U. S. Government Brass Cap corner ○
- Original stone corner, properly marked, firmly set ●
- Iron pipe set at proportionate distance ■
- Corner established by others as indicated □
- W. L. C. & L. Brass Cap set B.C.
- Temporary corner set this survey ▲
- Dependent Resurvey ————
- Protraction ————
- Well location ○

ELEVATIONS:

Before grading.

LOCATION.....8576
 R.P. 200' N.8608
 R.P. 200' S.8546
 R.P. 200' E.8582
 R.P. 200' W.8568

ELEV'S. REFERRED TO:

NE Cor. Sec. 5, T. 6 N.,
 R. 81 W., El. 8635 U. S. G. S.

SURVEY AND PLAT BY

WORTHINGTON, LENHART, CARPENTER & LADD, INC.

632 SOUTH DAVID STREET; CASPER, WYOMING

Direct solar lines and chained distances, Ref. Book No. 454, P. 64

PLATTED FIELD NOTES OF SURVEY

MARKING WELL LOCATION.

SE 1/4 NE 1/4, SECTION 5

FOR

BURTON, HAWKS EXPLORATION CO. LTD., CASPER, WYO.

Dated: 5-4-1972

Work Order No. 4-25-A2

E. C. Lenhart
 Certified true and correct, Surveyor
 COLORADO REG. NO. 3659