

Project: Garfield County, CO  
 Site: NPM G35 496 Pad  
 Well: BJU G35 FED 25C-35 496  
 Wellbore: Wellbore #1  
 Design: Design #1  
 Latitude: 39.660285  
 Longitude: -108.133937  
 Ground Level: 8164.0  
 RKB @ 8194.0usft (H&P#329)

FORMATION TOP DETAILS		
TVDPath	MDPath	Formation
2515.0	2681.3	Wasatch
5515.0	5960.3	Wasatch G
5832.0	6306.8	Fort Union
7880.0	8496.2	Ohio Creek
7880.0	8496.2	TOG
8114.0	8730.3	Williams Fork
10825.0	11442.3	Cameo
11411.0	12028.5	Rollins

#### REFERENCE INFORMATION

Co-ordinate (N/E) Reference: Well BJU G35 FED 25C-35 496 - Slot BJU G35 FED 25C-35 496, True North  
 Vertical (TVD) Reference: RKB @ 8194.0usft (H&P#329)  
 Section (VS) Reference: Slot - BJU G35 FED 25C-35 496(0.0N, 0.0E)  
 Measured Depth Reference: RKB @ 8194.0usft (H&P#329)  
 Calculation Method: Minimum Curvature

#### WELL DETAILS: BJU G35 FED 25C-35 496

+N/-S	+E/-W	Northing	Easting	Latitude	Longitude
0.0	0.0	14415229.50	8164.0 2447107.80	39.660285	BJU-108.133937 25C-35 496

#### PROJECT DETAILS: Garfield County, CO

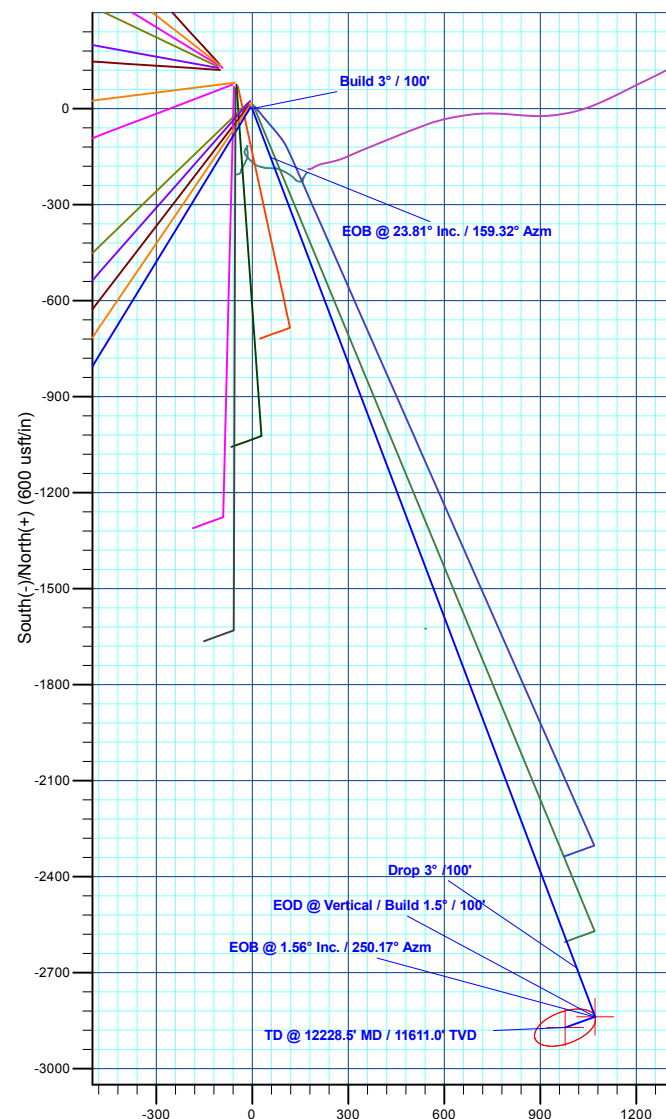
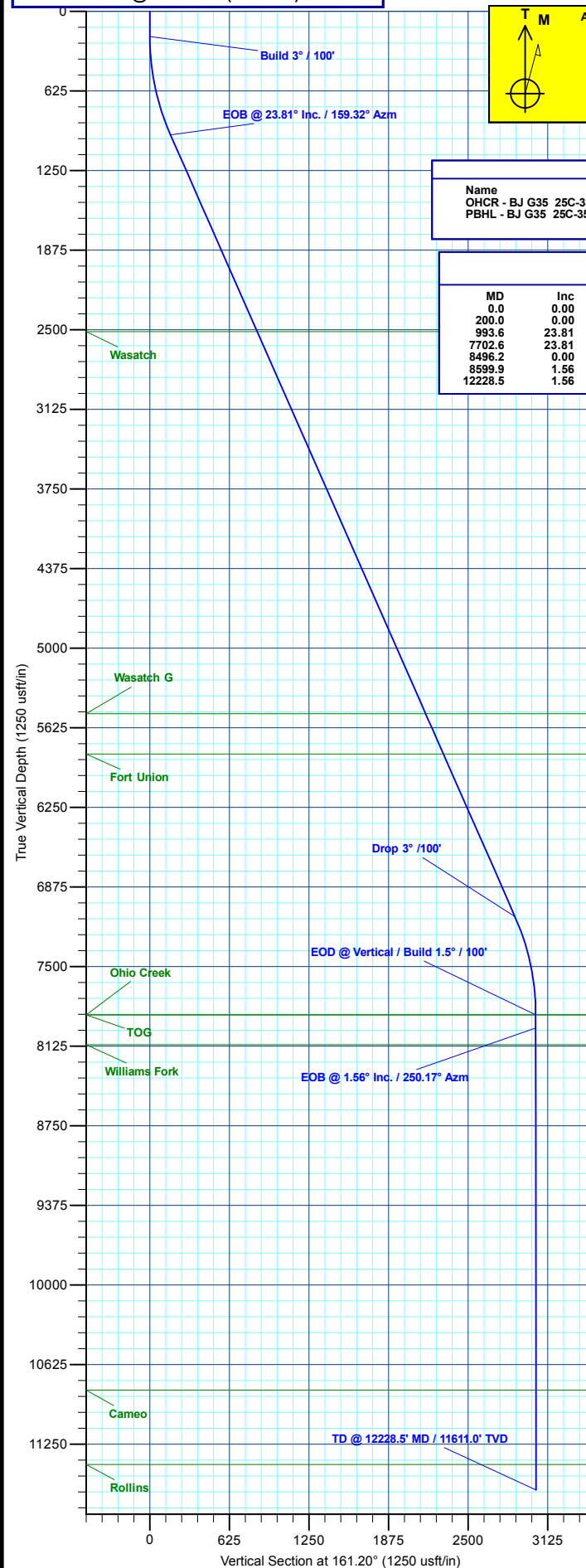
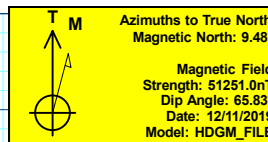
Geodetic System: Universal Transverse Mercator (US Survey Feet)  
 Datum: NAD 1927 - Western US  
 Ellipsoid: Clarke 1866  
 Zone: Zone 12N (114 W to 108 W)  
 System Datum: Mean Sea Level

#### DESIGN TARGET DETAILS

Name	TVD	+N/-S	+E/-W	Northing	Easting	Latitude	Longitude
OHCR - BJ G35 25C-35 496	7880.0	-2837.8	1071.4	14412427.38	2448269.25	39.652497	-108.130133
PBHL - BJ G35 25C-35 496	11611.0	-2871.7	977.4	14412390.50	2448176.40	39.652404	-108.130467

#### SECTION DETAILS

MD	Inc	Azi	TVD	+N/-S	+E/-W	Dleg	TFace	VSect	Annotation
0.0	0.00	0.00	0.0	0.0	0.0	0.00	0.00	0.0	
200.0	0.00	0.00	200.0	0.0	0.0	0.00	0.00	0.0	Build 3° / 100'
993.6	23.81	159.32	971.0	-152.0	57.4	3.00	159.32	162.4	EOB @ 23.81° Inc. / 159.32° Azm
7702.6	0.00	0.00	7109.0	-2685.7	1014.0	0.00	0.00	2869.2	Drop 3° / 100'
8496.2	0.00	0.00	7880.0	-2837.8	1071.4	3.00	180.00	3031.6	EOD @ Vertical / Build 1.5° / 100'
8599.9	1.56	250.17	7983.7	-2838.3	1070.0	1.50	250.17	3031.7	EOB @ 1.56° Inc. / 250.17° Azm
12228.5	1.56	250.17	11611.0	-2871.7	977.4	0.00	0.00	3033.5	TD @ 12228.5' MD / 11611.0' TVD



Plan: Design #1 (BJU G35 FED 25C-35 496/Wellbore #1)

Created By: Will Jircik

Date: 16:23, December 18 2019



## **Caerus Oil & Gas**

**Garfield County, CO**

**NPM G35 496 Pad**

**BJU G35 FED 25C-35 496 - Slot BJU G35 FED 25C-35 496**

**Wellbore #1**

**Plan: Design #1**

## **QES Well Planning Report**

**18 December, 2019**



<b>Database:</b>	EDM 5000.1 Single User Db	<b>Local Co-ordinate Reference:</b>	Well BJU G35 FED 25C-35 496 - Slot BJU G35 FED 25C-35 496
<b>Company:</b>	Caerus Oil & Gas	<b>TVD Reference:</b>	RKB @ 8194.0usft (H&P#329)
<b>Project:</b>	Garfield County, CO	<b>MD Reference:</b>	RKB @ 8194.0usft (H&P#329)
<b>Site:</b>	NPM G35 496 Pad	<b>North Reference:</b>	True
<b>Well:</b>	BJU G35 FED 25C-35 496	<b>Survey Calculation Method:</b>	Minimum Curvature
<b>Wellbore:</b>	Wellbore #1		
<b>Design:</b>	Design #1		

<b>Project</b>	Garfield County, CO		
<b>Map System:</b>	Universal Transverse Mercator (US Survey Fee	<b>System Datum:</b>	Mean Sea Level
<b>Geo Datum:</b>	NAD 1927 - Western US		
<b>Map Zone:</b>	Zone 12N (114 W to 108 W)		

<b>Site</b>	NPM G35 496 Pad		
<b>Site Position:</b>		<b>Northing:</b>	14,415,354.00 usft
<b>From:</b>	Map	<b>Easting:</b>	2,447,010.80 usft
<b>Position Uncertainty:</b>	0.0 usft	<b>Slot Radius:</b>	13-3/16 "
		<b>Latitude:</b>	39.660635
		<b>Longitude:</b>	-108.134267
		<b>Grid Convergence:</b>	1.83 °

<b>Well</b>	BJU G35 FED 25C-35 496 - Slot BJU G35 FED 25C-35 496		
<b>Well Position</b>	<b>+N/-S</b>	-127.5 usft	<b>Northing:</b> 14,415,229.50 usft
	<b>+E/-W</b>	93.0 usft	<b>Easting:</b> 2,447,107.80 usft
<b>Position Uncertainty</b>	0.0 usft	<b>Wellhead Elevation:</b>	<b>Latitude:</b> 39.660285
			<b>Longitude:</b> -108.133937
			<b>Ground Level:</b> 8,164.0 usft

<b>Wellbore</b>	Wellbore #1				
<b>Magnetics</b>	<b>Model Name</b>	<b>Sample Date</b>	<b>Declination (°)</b>	<b>Dip Angle (°)</b>	<b>Field Strength (nT)</b>
	HDGM_FILE	12/11/2019	9.48	65.83	51,251.00000000

<b>Design</b>	Design #1			
<b>Audit Notes:</b>				
<b>Version:</b>	<b>Phase:</b>	PLAN	<b>Tie On Depth:</b>	0.0
<b>Vertical Section:</b>	<b>Depth From (TVD) (usft)</b>	<b>+N/-S (usft)</b>	<b>+E/-W (usft)</b>	<b>Direction (°)</b>
	0.0	0.0	0.0	161.20

<b>Plan Sections</b>										
<b>Measured Depth (usft)</b>	<b>Inclination (°)</b>	<b>Azimuth (°)</b>	<b>Vertical Depth (usft)</b>	<b>+N/-S (usft)</b>	<b>+E/-W (usft)</b>	<b>Dogleg Rate (°/100usft)</b>	<b>Build Rate (°/100usft)</b>	<b>Turn Rate (°/100usft)</b>	<b>TFO (°)</b>	<b>Target</b>
0.0	0.00	0.00	0.0	0.0	0.0	0.00	0.00	0.00	0.00	
200.0	0.00	0.00	200.0	0.0	0.0	0.00	0.00	0.00	0.00	
993.6	23.81	159.32	971.0	-152.0	57.4	3.00	3.00	0.00	159.32	
7,702.6	23.81	159.32	7,109.0	-2,685.7	1,014.0	0.00	0.00	0.00	0.00	
8,496.2	0.00	0.00	7,880.0	-2,837.8	1,071.4	3.00	-3.00	0.00	180.00	OHCR - BJ G35 25
8,599.9	1.56	250.17	7,983.7	-2,838.3	1,070.0	1.50	1.50	-105.92	250.17	
12,228.5	1.56	250.17	11,611.0	-2,871.7	977.4	0.00	0.00	0.00	0.00	PBHL - BJ G35 25

<b>Database:</b>	EDM 5000.1 Single User Db	<b>Local Co-ordinate Reference:</b>	Well BJU G35 FED 25C-35 496 - Slot BJU G35 FED 25C-35 496
<b>Company:</b>	Caerus Oil & Gas	<b>TVD Reference:</b>	RKB @ 8194.0usft (H&P#329)
<b>Project:</b>	Garfield County, CO	<b>MD Reference:</b>	RKB @ 8194.0usft (H&P#329)
<b>Site:</b>	NPM G35 496 Pad	<b>North Reference:</b>	True
<b>Well:</b>	BJU G35 FED 25C-35 496	<b>Survey Calculation Method:</b>	Minimum Curvature
<b>Wellbore:</b>	Wellbore #1		
<b>Design:</b>	Design #1		

**Planned Survey**

Measured Depth (usft)	Inclination (°)	Azimuth (°)	Vertical Depth (usft)	+N/-S (usft)	+E/-W (usft)	Vertical Section (usft)	Dogleg Rate (°/100usft)	Build Rate (°/100usft)	Turn Rate (°/100usft)
0.0	0.00	0.00	0.0	0.0	0.0	0.0	0.00	0.00	0.00
100.0	0.00	0.00	100.0	0.0	0.0	0.0	0.00	0.00	0.00
<b>Build 3° / 100'</b>									
200.0	0.00	0.00	200.0	0.0	0.0	0.0	0.00	0.00	0.00
300.0	3.00	159.32	300.0	-2.4	0.9	2.6	3.00	3.00	0.00
400.0	6.00	159.32	399.6	-9.8	3.7	10.5	3.00	3.00	0.00
500.0	9.00	159.32	498.8	-22.0	8.3	23.5	3.00	3.00	0.00
600.0	12.00	159.32	597.1	-39.0	14.7	41.7	3.00	3.00	0.00
700.0	15.00	159.32	694.3	-60.9	23.0	65.0	3.00	3.00	0.00
800.0	18.00	159.32	790.2	-87.5	33.0	93.4	3.00	3.00	0.00
900.0	21.00	159.32	884.4	-118.7	44.8	126.8	3.00	3.00	0.00
<b>EOB @ 23.81° Inc. / 159.32° Azm</b>									
993.6	23.81	159.32	971.0	-152.0	57.4	162.4	3.00	3.00	0.00
1,000.0	23.81	159.32	976.8	-154.5	58.3	165.0	0.00	0.00	0.00
1,100.0	23.81	159.32	1,068.3	-192.2	72.6	205.4	0.00	0.00	0.00
1,200.0	23.81	159.32	1,159.8	-230.0	86.8	245.7	0.00	0.00	0.00
1,300.0	23.81	159.32	1,251.3	-267.8	101.1	286.1	0.00	0.00	0.00
1,400.0	23.81	159.32	1,342.8	-305.5	115.3	326.4	0.00	0.00	0.00
1,500.0	23.81	159.32	1,434.3	-343.3	129.6	366.7	0.00	0.00	0.00
1,600.0	23.81	159.32	1,525.8	-381.1	143.9	407.1	0.00	0.00	0.00
1,700.0	23.81	159.32	1,617.2	-418.8	158.1	447.4	0.00	0.00	0.00
1,800.0	23.81	159.32	1,708.7	-456.6	172.4	487.8	0.00	0.00	0.00
1,900.0	23.81	159.32	1,800.2	-494.4	186.6	528.1	0.00	0.00	0.00
2,000.0	23.81	159.32	1,891.7	-532.1	200.9	568.5	0.00	0.00	0.00
2,100.0	23.81	159.32	1,983.2	-569.9	215.2	608.8	0.00	0.00	0.00
2,200.0	23.81	159.32	2,074.7	-607.7	229.4	649.2	0.00	0.00	0.00
2,300.0	23.81	159.32	2,166.2	-645.4	243.7	689.5	0.00	0.00	0.00
2,400.0	23.81	159.32	2,257.7	-683.2	257.9	729.9	0.00	0.00	0.00
2,500.0	23.81	159.32	2,349.2	-720.9	272.2	770.2	0.00	0.00	0.00
2,600.0	23.81	159.32	2,440.7	-758.7	286.4	810.5	0.00	0.00	0.00
<b>Wasatch</b>									
2,681.3	23.81	159.32	2,515.0	-789.4	298.0	843.3	0.00	0.00	0.00
2,700.0	23.81	159.32	2,532.1	-796.5	300.7	850.9	0.00	0.00	0.00
2,800.0	23.81	159.32	2,623.6	-834.2	315.0	891.2	0.00	0.00	0.00
2,900.0	23.81	159.32	2,715.1	-872.0	329.2	931.6	0.00	0.00	0.00
3,000.0	23.81	159.32	2,806.6	-909.8	343.5	971.9	0.00	0.00	0.00
3,100.0	23.81	159.32	2,898.1	-947.5	357.7	1,012.3	0.00	0.00	0.00
3,200.0	23.81	159.32	2,989.6	-985.3	372.0	1,052.6	0.00	0.00	0.00
3,300.0	23.81	159.32	3,081.1	-1,023.1	386.2	1,093.0	0.00	0.00	0.00
3,400.0	23.81	159.32	3,172.6	-1,060.8	400.5	1,133.3	0.00	0.00	0.00
3,500.0	23.81	159.32	3,264.1	-1,098.6	414.8	1,173.7	0.00	0.00	0.00
3,600.0	23.81	159.32	3,355.6	-1,136.4	429.0	1,214.0	0.00	0.00	0.00
3,700.0	23.81	159.32	3,447.1	-1,174.1	443.3	1,254.3	0.00	0.00	0.00
3,800.0	23.81	159.32	3,538.5	-1,211.9	457.5	1,294.7	0.00	0.00	0.00
3,900.0	23.81	159.32	3,630.0	-1,249.7	471.8	1,335.0	0.00	0.00	0.00
4,000.0	23.81	159.32	3,721.5	-1,287.4	486.0	1,375.4	0.00	0.00	0.00
4,100.0	23.81	159.32	3,813.0	-1,325.2	500.3	1,415.7	0.00	0.00	0.00
4,200.0	23.81	159.32	3,904.5	-1,363.0	514.6	1,456.1	0.00	0.00	0.00
4,300.0	23.81	159.32	3,996.0	-1,400.7	528.8	1,496.4	0.00	0.00	0.00
4,400.0	23.81	159.32	4,087.5	-1,438.5	543.1	1,536.8	0.00	0.00	0.00
4,500.0	23.81	159.32	4,179.0	-1,476.3	557.3	1,577.1	0.00	0.00	0.00
4,600.0	23.81	159.32	4,270.5	-1,514.0	571.6	1,617.5	0.00	0.00	0.00
4,700.0	23.81	159.32	4,362.0	-1,551.8	585.9	1,657.8	0.00	0.00	0.00

<b>Database:</b>	EDM 5000.1 Single User Db	<b>Local Co-ordinate Reference:</b>	Well BJU G35 FED 25C-35 496 - Slot BJU G35 FED 25C-35 496
<b>Company:</b>	Caerus Oil & Gas	<b>TVD Reference:</b>	RKB @ 8194.0usft (H&P#329)
<b>Project:</b>	Garfield County, CO	<b>MD Reference:</b>	RKB @ 8194.0usft (H&P#329)
<b>Site:</b>	NPM G35 496 Pad	<b>North Reference:</b>	True
<b>Well:</b>	BJU G35 FED 25C-35 496	<b>Survey Calculation Method:</b>	Minimum Curvature
<b>Wellbore:</b>	Wellbore #1		
<b>Design:</b>	Design #1		

Planned Survey									
Measured Depth (usft)	Inclination (°)	Azimuth (°)	Vertical Depth (usft)	+N/-S (usft)	+E/-W (usft)	Vertical Section (usft)	Dogleg Rate (°/100usft)	Build Rate (°/100usft)	Turn Rate (°/100usft)
4,800.0	23.81	159.32	4,453.4	-1,589.6	600.1	1,698.1	0.00	0.00	0.00
4,900.0	23.81	159.32	4,544.9	-1,627.3	614.4	1,738.5	0.00	0.00	0.00
5,000.0	23.81	159.32	4,636.4	-1,665.1	628.6	1,778.8	0.00	0.00	0.00
5,100.0	23.81	159.32	4,727.9	-1,702.9	642.9	1,819.2	0.00	0.00	0.00
5,200.0	23.81	159.32	4,819.4	-1,740.6	657.1	1,859.5	0.00	0.00	0.00
5,300.0	23.81	159.32	4,910.9	-1,778.4	671.4	1,899.9	0.00	0.00	0.00
5,400.0	23.81	159.32	5,002.4	-1,816.1	685.7	1,940.2	0.00	0.00	0.00
5,500.0	23.81	159.32	5,093.9	-1,853.9	699.9	1,980.6	0.00	0.00	0.00
5,600.0	23.81	159.32	5,185.4	-1,891.7	714.2	2,020.9	0.00	0.00	0.00
5,700.0	23.81	159.32	5,276.9	-1,929.4	728.4	2,061.3	0.00	0.00	0.00
5,800.0	23.81	159.32	5,368.3	-1,967.2	742.7	2,101.6	0.00	0.00	0.00
5,900.0	23.81	159.32	5,459.8	-2,005.0	756.9	2,141.9	0.00	0.00	0.00
<b>Wasatch G</b>									
5,960.3	23.81	159.32	5,515.0	-2,027.7	765.5	2,166.3	0.00	0.00	0.00
6,000.0	23.81	159.32	5,551.3	-2,042.7	771.2	2,182.3	0.00	0.00	0.00
6,100.0	23.81	159.32	5,642.8	-2,080.5	785.5	2,222.6	0.00	0.00	0.00
6,200.0	23.81	159.32	5,734.3	-2,118.3	799.7	2,263.0	0.00	0.00	0.00
6,300.0	23.81	159.32	5,825.8	-2,156.0	814.0	2,303.3	0.00	0.00	0.00
<b>Fort Union</b>									
6,306.8	23.81	159.32	5,832.0	-2,158.6	814.9	2,306.1	0.00	0.00	0.00
6,400.0	23.81	159.32	5,917.3	-2,193.8	828.2	2,343.7	0.00	0.00	0.00
6,500.0	23.81	159.32	6,008.8	-2,231.6	842.5	2,384.0	0.00	0.00	0.00
6,600.0	23.81	159.32	6,100.3	-2,269.3	856.8	2,424.4	0.00	0.00	0.00
6,700.0	23.81	159.32	6,191.8	-2,307.1	871.0	2,464.7	0.00	0.00	0.00
6,800.0	23.81	159.32	6,283.3	-2,344.9	885.3	2,505.1	0.00	0.00	0.00
6,900.0	23.81	159.32	6,374.7	-2,382.6	899.5	2,545.4	0.00	0.00	0.00
7,000.0	23.81	159.32	6,466.2	-2,420.4	913.8	2,585.7	0.00	0.00	0.00
7,100.0	23.81	159.32	6,557.7	-2,458.2	928.0	2,626.1	0.00	0.00	0.00
7,200.0	23.81	159.32	6,649.2	-2,495.9	942.3	2,666.4	0.00	0.00	0.00
7,300.0	23.81	159.32	6,740.7	-2,533.7	956.6	2,706.8	0.00	0.00	0.00
7,400.0	23.81	159.32	6,832.2	-2,571.5	970.8	2,747.1	0.00	0.00	0.00
7,500.0	23.81	159.32	6,923.7	-2,609.2	985.1	2,787.5	0.00	0.00	0.00
7,600.0	23.81	159.32	7,015.2	-2,647.0	999.3	2,827.8	0.00	0.00	0.00
<b>Drop 3° /100'</b>									
7,702.6	23.81	159.32	7,109.0	-2,685.7	1,014.0	2,869.2	0.00	0.00	0.00
7,800.0	20.89	159.32	7,199.1	-2,720.4	1,027.0	2,906.2	3.00	-3.00	0.00
7,900.0	17.89	159.32	7,293.4	-2,751.4	1,038.8	2,939.4	3.00	-3.00	0.00
8,000.0	14.89	159.32	7,389.4	-2,777.8	1,048.7	2,967.6	3.00	-3.00	0.00
8,100.0	11.89	159.32	7,486.6	-2,799.5	1,056.9	2,990.7	3.00	-3.00	0.00
8,200.0	8.89	159.32	7,585.0	-2,816.3	1,063.3	3,008.7	3.00	-3.00	0.00
8,300.0	5.89	159.32	7,684.1	-2,828.4	1,067.8	3,021.6	3.00	-3.00	0.00
8,400.0	2.89	159.32	7,783.8	-2,835.5	1,070.5	3,029.2	3.00	-3.00	0.00
<b>EOD @ Vertical / Build 1.5° / 100' - Ohio Creek - TOG</b>									
8,496.2	0.00	0.00	7,880.0	-2,837.8	1,071.4	3,031.6	3.00	-3.00	0.00
8,500.0	0.06	250.17	7,883.8	-2,837.8	1,071.4	3,031.6	1.50	1.50	0.00
<b>EOB @ 1.56° Inc. / 250.17° Azm</b>									
8,599.9	1.56	250.17	7,983.7	-2,838.3	1,070.0	3,031.7	1.50	1.50	0.00
8,700.0	1.56	250.17	8,083.8	-2,839.2	1,067.5	3,031.7	0.00	0.00	0.00
<b>Williams Fork</b>									
8,730.3	1.56	250.17	8,114.0	-2,839.5	1,066.7	3,031.7	0.00	0.00	0.00
8,800.0	1.56	250.17	8,183.7	-2,840.1	1,064.9	3,031.8	0.00	0.00	0.00
8,900.0	1.56	250.17	8,283.7	-2,841.0	1,062.4	3,031.8	0.00	0.00	0.00

<b>Database:</b>	EDM 5000.1 Single User Db	<b>Local Co-ordinate Reference:</b>	Well BJU G35 FED 25C-35 496 - Slot BJU G35 FED 25C-35 496
<b>Company:</b>	Caerus Oil & Gas	<b>TVD Reference:</b>	RKB @ 8194.0usft (H&P#329)
<b>Project:</b>	Garfield County, CO	<b>MD Reference:</b>	RKB @ 8194.0usft (H&P#329)
<b>Site:</b>	NPM G35 496 Pad	<b>North Reference:</b>	True
<b>Well:</b>	BJU G35 FED 25C-35 496	<b>Survey Calculation Method:</b>	Minimum Curvature
<b>Wellbore:</b>	Wellbore #1		
<b>Design:</b>	Design #1		

Planned Survey									
Measured Depth (usft)	Inclination (°)	Azimuth (°)	Vertical Depth (usft)	+N/-S (usft)	+E/-W (usft)	Vertical Section (usft)	Dogleg Rate (°/100usft)	Build Rate (°/100usft)	Turn Rate (°/100usft)
9,000.0	1.56	250.17	8,383.6	-2,841.9	1,059.8	3,031.9	0.00	0.00	0.00
9,100.0	1.56	250.17	8,483.6	-2,842.9	1,057.3	3,031.9	0.00	0.00	0.00
9,200.0	1.56	250.17	8,583.6	-2,843.8	1,054.7	3,032.0	0.00	0.00	0.00
9,300.0	1.56	250.17	8,683.5	-2,844.7	1,052.2	3,032.0	0.00	0.00	0.00
9,400.0	1.56	250.17	8,783.5	-2,845.6	1,049.6	3,032.1	0.00	0.00	0.00
9,500.0	1.56	250.17	8,883.5	-2,846.6	1,047.1	3,032.1	0.00	0.00	0.00
9,600.0	1.56	250.17	8,983.4	-2,847.5	1,044.5	3,032.2	0.00	0.00	0.00
9,700.0	1.56	250.17	9,083.4	-2,848.4	1,041.9	3,032.2	0.00	0.00	0.00
9,800.0	1.56	250.17	9,183.3	-2,849.3	1,039.4	3,032.3	0.00	0.00	0.00
9,900.0	1.56	250.17	9,283.3	-2,850.2	1,036.8	3,032.3	0.00	0.00	0.00
10,000.0	1.56	250.17	9,383.3	-2,851.2	1,034.3	3,032.4	0.00	0.00	0.00
10,100.0	1.56	250.17	9,483.2	-2,852.1	1,031.7	3,032.4	0.00	0.00	0.00
10,200.0	1.56	250.17	9,583.2	-2,853.0	1,029.2	3,032.5	0.00	0.00	0.00
10,300.0	1.56	250.17	9,683.2	-2,853.9	1,026.6	3,032.5	0.00	0.00	0.00
10,400.0	1.56	250.17	9,783.1	-2,854.8	1,024.1	3,032.6	0.00	0.00	0.00
10,500.0	1.56	250.17	9,883.1	-2,855.8	1,021.5	3,032.6	0.00	0.00	0.00
10,600.0	1.56	250.17	9,983.1	-2,856.7	1,019.0	3,032.7	0.00	0.00	0.00
10,700.0	1.56	250.17	10,083.0	-2,857.6	1,016.4	3,032.7	0.00	0.00	0.00
10,800.0	1.56	250.17	10,183.0	-2,858.5	1,013.9	3,032.7	0.00	0.00	0.00
10,900.0	1.56	250.17	10,282.9	-2,859.4	1,011.3	3,032.8	0.00	0.00	0.00
11,000.0	1.56	250.17	10,382.9	-2,860.4	1,008.8	3,032.8	0.00	0.00	0.00
11,100.0	1.56	250.17	10,482.9	-2,861.3	1,006.2	3,032.9	0.00	0.00	0.00
11,200.0	1.56	250.17	10,582.8	-2,862.2	1,003.6	3,032.9	0.00	0.00	0.00
11,300.0	1.56	250.17	10,682.8	-2,863.1	1,001.1	3,033.0	0.00	0.00	0.00
11,400.0	1.56	250.17	10,782.8	-2,864.1	998.5	3,033.0	0.00	0.00	0.00
<b>Cameo</b>									
11,442.3	1.56	250.17	10,825.0	-2,864.4	997.5	3,033.1	0.00	0.00	0.00
11,500.0	1.56	250.17	10,882.7	-2,865.0	996.0	3,033.1	0.00	0.00	0.00
11,600.0	1.56	250.17	10,982.7	-2,865.9	993.4	3,033.1	0.00	0.00	0.00
11,700.0	1.56	250.17	11,082.6	-2,866.8	990.9	3,033.2	0.00	0.00	0.00
11,800.0	1.56	250.17	11,182.6	-2,867.7	988.3	3,033.2	0.00	0.00	0.00
11,900.0	1.56	250.17	11,282.6	-2,868.7	985.8	3,033.3	0.00	0.00	0.00
12,000.0	1.56	250.17	11,382.5	-2,869.6	983.2	3,033.3	0.00	0.00	0.00
<b>Rollins</b>									
12,028.5	1.56	250.17	11,411.0	-2,869.8	982.5	3,033.4	0.00	0.00	0.00
12,100.0	1.56	250.17	11,482.5	-2,870.5	980.7	3,033.4	0.00	0.00	0.00
12,200.0	1.56	250.17	11,582.5	-2,871.4	978.1	3,033.4	0.00	0.00	0.00
<b>TD @ 12228.5' MD / 11611.0' TVD</b>									
12,228.5	1.56	250.17	11,611.0	-2,871.7	977.4	3,033.5	0.00	0.00	0.00

<b>Database:</b>	EDM 5000.1 Single User Db	<b>Local Co-ordinate Reference:</b>	Well BJU G35 FED 25C-35 496 - Slot BJU G35 FED 25C-35 496
<b>Company:</b>	Caerus Oil & Gas	<b>TVD Reference:</b>	RKB @ 8194.0usft (H&P#329)
<b>Project:</b>	Garfield County, CO	<b>MD Reference:</b>	RKB @ 8194.0usft (H&P#329)
<b>Site:</b>	NPM G35 496 Pad	<b>North Reference:</b>	True
<b>Well:</b>	BJU G35 FED 25C-35 496	<b>Survey Calculation Method:</b>	Minimum Curvature
<b>Wellbore:</b>	Wellbore #1		
<b>Design:</b>	Design #1		

### Design Targets

#### Target Name

- hit/miss target - Shape	Dip Angle (°)	Dip Dir. (°)	TVD (usft)	+N/-S (usft)	+E/-W (usft)	Northing (usft)	Easting (usft)	Latitude	Longitude
OHCR - BJ G35 25C- - plan hits target center - Point	0.00	0.00	7,880.0	-2,837.8	1,071.4	14,412,427.38	2,448,269.25	39.652497	-108.130133
PBHL - BJ G35 25C- - plan hits target center - Ellipse (radii L100.0 W50.0 on 250.00 azi)	0.00	0.00	11,611.0	-2,871.7	977.4	14,412,390.50	2,448,176.40	39.652404	-108.130467

### Formations

Measured Depth (usft)	Vertical Depth (usft)	Name	Lithology	Dip (°)	Dip Direction (°)
2,681.3	2,515.0	Wasatch			
5,960.3	5,515.0	Wasatch G			
6,306.8	5,832.0	Fort Union			
8,496.2	7,880.0	Ohio Creek			
8,496.2	7,880.0	TOG			
8,730.3	8,114.0	Williams Fork			
11,442.3	10,825.0	Cameo			
12,028.5	11,411.0	Rollins			

### Plan Annotations

Measured Depth (usft)	Vertical Depth (usft)	Local Coordinates		Comment
		+N/-S (usft)	+E/-W (usft)	
200.0	200.0	0.0	0.0	Build 3° / 100'
993.6	971.0	-152.0	57.4	EOB @ 23.81° Inc. / 159.32° Azm
7,702.6	7,109.0	-2,685.7	1,014.0	Drop 3° / 100'
8,496.2	7,880.0	-2,837.8	1,071.4	EOD @ Vertical / Build 1.5° / 100'
8,599.9	7,983.7	-2,838.3	1,070.0	EOB @ 1.56° Inc. / 250.17° Azm
12,228.5	11,611.0	-2,871.7	977.4	TD @ 12228.5' MD / 11611.0' TVD