

Project: Garfield County, CO
 Site: NPM G35 496 Pad
 Well: BJU G35 FED 25A-35 496
 Wellbore: Wellbore #1
 Design: Design #1
 Latitude: 39.660303
 Longitude: -108.133909
 Ground Level: 8164.0
 RKB @ 8194.0usft (H&P#329)

FORMATION TOP DETAILS			
TVDPath	MDPath	Formation	
2532.0	2652.4	Wasatch	G
5532.0	5843.8	Fort Union	
5834.0	6165.0	Ohio Creek	
7891.0	8325.0	TOG	
7891.0	8325.0	Williams Fork	
8129.0	8563.1	Cameo	
10657.0	11292.1	Rollins	
11433.0	11668.3		

REFERENCE INFORMATION

Co-ordinate (N/E) Reference: Well BJU G35 FED 25A-35 496 - Slot BJU G35 FED 25A-35 496, True North
 Vertical (TVD) Reference: RKB @ 8194.0usft (H&P#329)
 Section (VS) Reference: Slot - BJU G35 FED 25A-35 496(0.0N, 0.0E)
 Measured Depth Reference: RKB @ 8194.0usft (H&P#329)
 Calculation Method: Minimum Curvature

WELL DETAILS: BJU G35 FED 25A-35 496

+N/-S	+E/-W	Northing	Easting	Latitude	Longitude
0.0	0.0	14415236.20	8164.0 2447115.30	39.660303	BJU G35 FED 25A-35 496 -108.133909

PROJECT DETAILS: Garfield County, CO

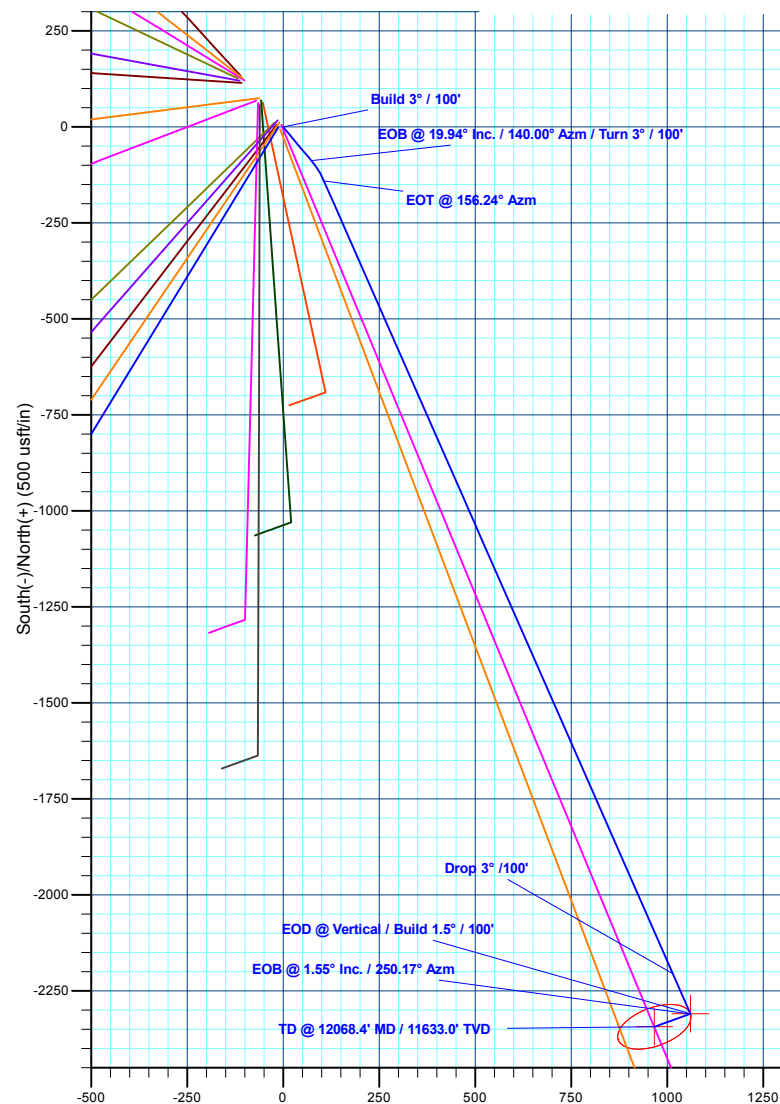
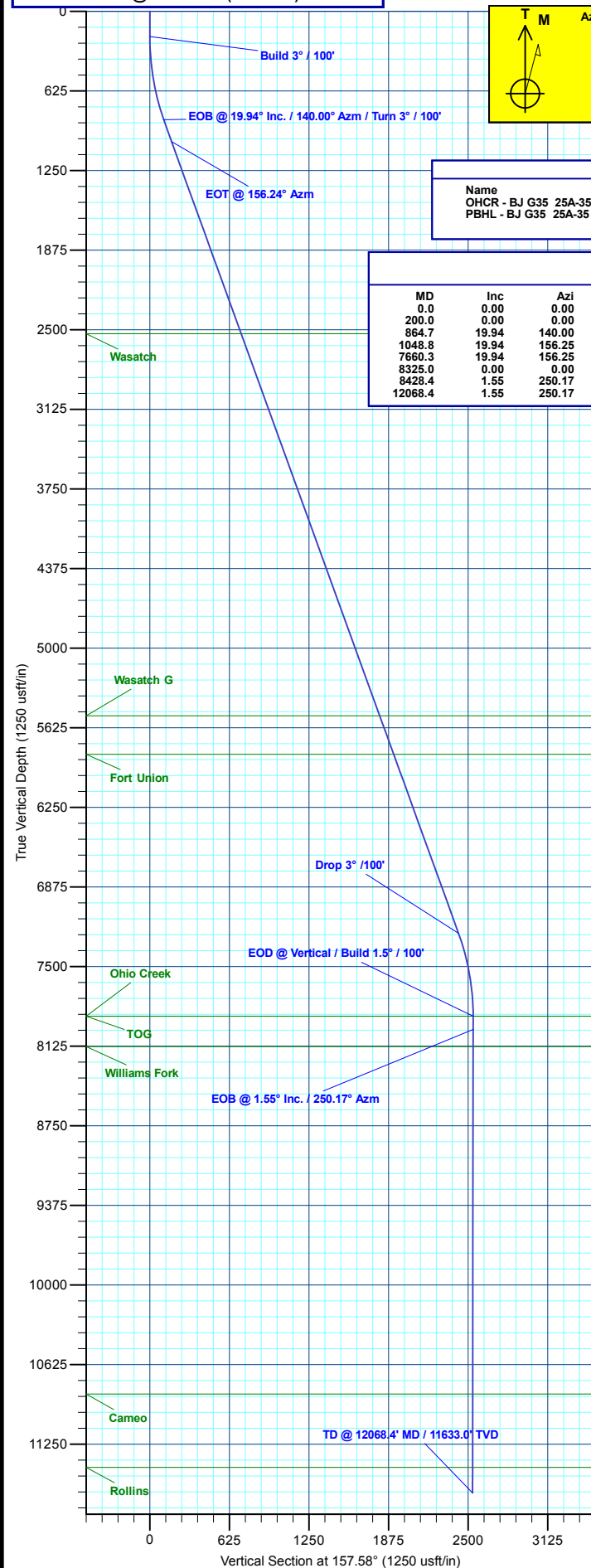
Geodetic System: Universal Transverse Mercator (US Survey Feet)
 Datum: NAD 1927 - Western US
 Ellipsoid: Clarke 1866
 Zone: Zone 12N (114 W to 108 W)
 System Datum: Mean Sea Level

DESIGN TARGET DETAILS

Name	TVD	+N/-S	+E/-W	Northing	Easting	Latitude	Longitude
OHCR - BJ G35 25A-35 496	7891.0	-2309.4	1060.8	14412961.88	2448249.35	39.653965	-108.130143
PBHL - BJ G35 25A-35 496	11633.0	-2343.3	966.9	14412925.00	2448156.50	39.653872	-108.130477

SECTION DETAILS

MD	Inc	Azi	TVD	+N/-S	+E/-W	Dieg	TFace	Vsect	Annotation
0.0	0.00	0.00	0.0	0.0	0.0	0.00	0.00	0.0	Build 3° / 100'
200.0	0.00	0.00	200.0	0.0	0.0	0.00	0.00	0.0	EOB @ 19.94° Inc. / 140.00° Azm / Turn 3° / 100'
864.7	19.94	140.00	851.3	-87.7	73.6	3.00	140.00	109.1	EOT @ 156.24° Azm
1048.8	19.94	156.25	1024.6	-140.6	106.5	3.00	97.62	170.5	Drop 3° / 100'
7660.3	19.94	156.25	7239.6	-2204.6	1014.7	0.00	0.00	2424.9	EOD @ Vertical / Build 1.5° / 100'
8325.0	0.00	0.00	7891.0	-2309.4	1060.8	3.00	180.00	2539.4	EOB @ 1.55° Inc. / 250.17° Azm
8428.4	1.55	250.17	7994.4	-2309.9	1059.5	1.50	250.17	2539.4	TD @ 12068.4' MD / 11633.0' TVD
12068.4	1.55	250.17	11633.0	-2343.3	966.9	0.00	0.00	2534.9	



Plan: Design #1 (BJU G35 FED 25A-35 496/Wellbore #1)

Created By: Will Jircik

Date: 16:31, December 18 2019



Caerus Oil & Gas

Garfield County, CO

NPM G35 496 Pad

BJU G35 FED 25A-35 496 - Slot BJU G35 FED 25A-35 496

Wellbore #1

Plan: Design #1

QES Well Planning Report

18 December, 2019



Database:	EDM 5000.1 Single User Db	Local Co-ordinate Reference:	Well BJU G35 FED 25A-35 496 - Slot BJU G35 FED 25A-35 496
Company:	Caerus Oil & Gas	TVD Reference:	RKB @ 8194.0usft (H&P#329)
Project:	Garfield County, CO	MD Reference:	RKB @ 8194.0usft (H&P#329)
Site:	NPM G35 496 Pad	North Reference:	True
Well:	BJU G35 FED 25A-35 496	Survey Calculation Method:	Minimum Curvature
Wellbore:	Wellbore #1		
Design:	Design #1		

Project	Garfield County, CO		
Map System:	Universal Transverse Mercator (US Survey Fee	System Datum:	Mean Sea Level
Geo Datum:	NAD 1927 - Western US		
Map Zone:	Zone 12N (114 W to 108 W)		

Site		NPM G35 496 Pad			
Site Position:		Northing:	14,415,354.00 usft	Latitude:	39.660635
From:	Map	Easting:	2,447,010.80 usft	Longitude:	-108.134267
Position Uncertainty:	0.0 usft	Slot Radius:	13-3/16 "	Grid Convergence:	1.83 °

Well	BJU G35 FED 25A-35 496 - Slot BJU G35 FED 25A-35 496					
Well Position	+N/-S	-121.1 usft	Northing:	14,415,236.20 usft	Latitude:	39.660303
	+E/-W	100.7 usft	Easting:	2,447,115.30 usft	Longitude:	-108.133910
Position Uncertainty		0.0 usft	Wellhead Elevation:		Ground Level:	8,164.0 usft

Wellbore	Wellbore #1				
Magnetics	Model Name	Sample Date	Declination (°)	Dip Angle (°)	Field Strength (nT)
	HDGM_FILE	12/11/2019	9.48	65.83	51,251.00000000

Design	Design #1			
Audit Notes:				
Version:	Phase:	PLAN	Tie On Depth:	0.0
Vertical Section:	Depth From (TVD) (usft)	+N/-S (usft)	+E/-W (usft)	Direction (°)
	0.0	0.0	0.0	157.58

Plan Sections										
Measured Depth (usft)	Inclination (°)	Azimuth (°)	Vertical Depth (usft)	+N/-S (usft)	+E/-W (usft)	Dogleg Rate (°/100usft)	Build Rate (°/100usft)	Turn Rate (°/100usft)	TFO (°)	Target
0.0	0.00	0.00	0.0	0.0	0.0	0.00	0.00	0.00	0.00	
200.0	0.00	0.00	200.0	0.0	0.0	0.00	0.00	0.00	0.00	
864.7	19.94	140.00	851.3	-87.7	73.6	3.00	3.00	0.00	140.00	
1,048.8	19.94	156.25	1,024.6	-140.6	106.5	3.00	0.00	8.82	97.62	
7,660.3	19.94	156.25	7,239.6	-2,204.6	1,014.7	0.00	0.00	0.00	0.00	
8,325.0	0.00	0.00	7,891.0	-2,309.4	1,060.8	3.00	-3.00	0.00	180.00	OHCR - BJ G35 25
8,428.4	1.55	250.17	7,994.4	-2,309.9	1,059.5	1.50	1.50	-106.24	250.17	
12,068.4	1.55	250.17	11,633.0	-2,343.3	966.9	0.00	0.00	0.00	0.00	PBHL - BJ G35 25

Database:	EDM 5000.1 Single User Db	Local Co-ordinate Reference:	Well BJU G35 FED 25A-35 496 - Slot BJU G35 FED 25A-35 496
Company:	Caerus Oil & Gas	TVD Reference:	RKB @ 8194.0usft (H&P#329)
Project:	Garfield County, CO	MD Reference:	RKB @ 8194.0usft (H&P#329)
Site:	NPM G35 496 Pad	North Reference:	True
Well:	BJU G35 FED 25A-35 496	Survey Calculation Method:	Minimum Curvature
Wellbore:	Wellbore #1		
Design:	Design #1		

Planned Survey									
Measured Depth (usft)	Inclination (°)	Azimuth (°)	Vertical Depth (usft)	+N/-S (usft)	+E/-W (usft)	Vertical Section (usft)	Dogleg Rate (°/100usft)	Build Rate (°/100usft)	Turn Rate (°/100usft)
0.0	0.00	0.00	0.0	0.0	0.0	0.0	0.00	0.00	0.00
100.0	0.00	0.00	100.0	0.0	0.0	0.0	0.00	0.00	0.00
Build 3° / 100'									
200.0	0.00	0.00	200.0	0.0	0.0	0.0	0.00	0.00	0.00
300.0	3.00	140.00	300.0	-2.0	1.7	2.5	3.00	3.00	0.00
400.0	6.00	140.00	399.6	-8.0	6.7	10.0	3.00	3.00	0.00
500.0	9.00	140.00	498.8	-18.0	15.1	22.4	3.00	3.00	0.00
600.0	12.00	140.00	597.1	-32.0	26.8	39.8	3.00	3.00	0.00
700.0	15.00	140.00	694.3	-49.9	41.8	62.0	3.00	3.00	0.00
800.0	18.00	140.00	790.2	-71.6	60.1	89.1	3.00	3.00	0.00
EOB @ 19.94° Inc. / 140.00° Azm / Turn 3° / 100'									
864.7	19.94	140.00	851.3	-87.7	73.6	109.1	3.00	3.00	0.00
900.0	19.83	143.10	884.6	-97.1	81.1	120.7	3.00	-0.32	8.77
1,000.0	19.80	151.96	978.7	-125.6	99.2	154.0	3.00	-0.03	8.86
EOT @ 156.24° Azm									
1,048.8	19.94	156.25	1,024.6	-140.6	106.5	170.5	3.00	0.30	8.79
1,100.0	19.94	156.25	1,072.7	-156.5	113.5	188.0	0.00	0.00	0.00
1,200.0	19.94	156.25	1,166.7	-187.7	127.2	222.1	0.00	0.00	0.00
1,300.0	19.94	156.25	1,260.7	-219.0	141.0	256.2	0.00	0.00	0.00
1,400.0	19.94	156.25	1,354.7	-250.2	154.7	290.3	0.00	0.00	0.00
1,500.0	19.94	156.25	1,448.7	-281.4	168.4	324.4	0.00	0.00	0.00
1,600.0	19.94	156.25	1,542.7	-312.6	182.2	358.5	0.00	0.00	0.00
1,700.0	19.94	156.25	1,636.7	-343.8	195.9	392.6	0.00	0.00	0.00
1,800.0	19.94	156.25	1,730.7	-375.1	209.6	426.7	0.00	0.00	0.00
1,900.0	19.94	156.25	1,824.7	-406.3	223.4	460.8	0.00	0.00	0.00
2,000.0	19.94	156.25	1,918.7	-437.5	237.1	494.9	0.00	0.00	0.00
2,100.0	19.94	156.25	2,012.7	-468.7	250.9	529.0	0.00	0.00	0.00
2,200.0	19.94	156.25	2,106.7	-499.9	264.6	563.1	0.00	0.00	0.00
2,300.0	19.94	156.25	2,200.7	-531.2	278.3	597.2	0.00	0.00	0.00
2,400.0	19.94	156.25	2,294.7	-562.4	292.1	631.3	0.00	0.00	0.00
2,500.0	19.94	156.25	2,388.7	-593.6	305.8	665.4	0.00	0.00	0.00
2,600.0	19.94	156.25	2,482.7	-624.8	319.5	699.5	0.00	0.00	0.00
Wasatch									
2,652.4	19.94	156.25	2,532.0	-641.2	326.7	717.3	0.00	0.00	0.00
2,700.0	19.94	156.25	2,576.7	-656.0	333.3	733.6	0.00	0.00	0.00
2,800.0	19.94	156.25	2,670.7	-687.2	347.0	767.7	0.00	0.00	0.00
2,900.0	19.94	156.25	2,764.8	-718.5	360.8	801.7	0.00	0.00	0.00
3,000.0	19.94	156.25	2,858.8	-749.7	374.5	835.8	0.00	0.00	0.00
3,100.0	19.94	156.25	2,952.8	-780.9	388.2	869.9	0.00	0.00	0.00
3,200.0	19.94	156.25	3,046.8	-812.1	402.0	904.0	0.00	0.00	0.00
3,300.0	19.94	156.25	3,140.8	-843.3	415.7	938.1	0.00	0.00	0.00
3,400.0	19.94	156.25	3,234.8	-874.6	429.4	972.2	0.00	0.00	0.00
3,500.0	19.94	156.25	3,328.8	-905.8	443.2	1,006.3	0.00	0.00	0.00
3,600.0	19.94	156.25	3,422.8	-937.0	456.9	1,040.4	0.00	0.00	0.00
3,700.0	19.94	156.25	3,516.8	-968.2	470.7	1,074.5	0.00	0.00	0.00
3,800.0	19.94	156.25	3,610.8	-999.4	484.4	1,108.6	0.00	0.00	0.00
3,900.0	19.94	156.25	3,704.8	-1,030.6	498.1	1,142.7	0.00	0.00	0.00
4,000.0	19.94	156.25	3,798.8	-1,061.9	511.9	1,176.8	0.00	0.00	0.00
4,100.0	19.94	156.25	3,892.8	-1,093.1	525.6	1,210.9	0.00	0.00	0.00
4,200.0	19.94	156.25	3,986.8	-1,124.3	539.3	1,245.0	0.00	0.00	0.00
4,300.0	19.94	156.25	4,080.8	-1,155.5	553.1	1,279.1	0.00	0.00	0.00
4,400.0	19.94	156.25	4,174.8	-1,186.7	566.8	1,313.2	0.00	0.00	0.00
4,500.0	19.94	156.25	4,268.8	-1,218.0	580.6	1,347.3	0.00	0.00	0.00

Database:	EDM 5000.1 Single User Db	Local Co-ordinate Reference:	Well BJU G35 FED 25A-35 496 - Slot BJU G35 FED 25A-35 496
Company:	Caerus Oil & Gas	TVD Reference:	RKB @ 8194.0usft (H&P#329)
Project:	Garfield County, CO	MD Reference:	RKB @ 8194.0usft (H&P#329)
Site:	NPM G35 496 Pad	North Reference:	True
Well:	BJU G35 FED 25A-35 496	Survey Calculation Method:	Minimum Curvature
Wellbore:	Wellbore #1		
Design:	Design #1		

Planned Survey									
Measured Depth (usft)	Inclination (°)	Azimuth (°)	Vertical Depth (usft)	+N/-S (usft)	+E/-W (usft)	Vertical Section (usft)	Dogleg Rate (°/100usft)	Build Rate (°/100usft)	Turn Rate (°/100usft)
4,600.0	19.94	156.25	4,362.8	-1,249.2	594.3	1,381.4	0.00	0.00	0.00
4,700.0	19.94	156.25	4,456.8	-1,280.4	608.0	1,415.5	0.00	0.00	0.00
4,800.0	19.94	156.25	4,550.8	-1,311.6	621.8	1,449.6	0.00	0.00	0.00
4,900.0	19.94	156.25	4,644.8	-1,342.8	635.5	1,483.7	0.00	0.00	0.00
5,000.0	19.94	156.25	4,738.8	-1,374.1	649.2	1,517.8	0.00	0.00	0.00
5,100.0	19.94	156.25	4,832.8	-1,405.3	663.0	1,551.9	0.00	0.00	0.00
5,200.0	19.94	156.25	4,926.8	-1,436.5	676.7	1,586.0	0.00	0.00	0.00
5,300.0	19.94	156.25	5,020.8	-1,467.7	690.5	1,620.1	0.00	0.00	0.00
5,400.0	19.94	156.25	5,114.8	-1,498.9	704.2	1,654.2	0.00	0.00	0.00
5,500.0	19.94	156.25	5,208.8	-1,530.1	717.9	1,688.3	0.00	0.00	0.00
5,600.0	19.94	156.25	5,302.9	-1,561.4	731.7	1,722.4	0.00	0.00	0.00
5,700.0	19.94	156.25	5,396.9	-1,592.6	745.4	1,756.5	0.00	0.00	0.00
5,800.0	19.94	156.25	5,490.9	-1,623.8	759.1	1,790.6	0.00	0.00	0.00
Wasatch G									
5,843.8	19.94	156.25	5,532.0	-1,637.5	765.2	1,805.5	0.00	0.00	0.00
5,900.0	19.94	156.25	5,584.9	-1,655.0	772.9	1,824.7	0.00	0.00	0.00
6,000.0	19.94	156.25	5,678.9	-1,686.2	786.6	1,858.8	0.00	0.00	0.00
6,100.0	19.94	156.25	5,772.9	-1,717.5	800.4	1,892.9	0.00	0.00	0.00
Fort Union									
6,165.0	19.94	156.25	5,834.0	-1,737.8	809.3	1,915.1	0.00	0.00	0.00
6,200.0	19.94	156.25	5,866.9	-1,748.7	814.1	1,927.0	0.00	0.00	0.00
6,300.0	19.94	156.25	5,960.9	-1,779.9	827.8	1,961.1	0.00	0.00	0.00
6,400.0	19.94	156.25	6,054.9	-1,811.1	841.6	1,995.2	0.00	0.00	0.00
6,500.0	19.94	156.25	6,148.9	-1,842.3	855.3	2,029.3	0.00	0.00	0.00
6,600.0	19.94	156.25	6,242.9	-1,873.6	869.0	2,063.4	0.00	0.00	0.00
6,700.0	19.94	156.25	6,336.9	-1,904.8	882.8	2,097.5	0.00	0.00	0.00
6,800.0	19.94	156.25	6,430.9	-1,936.0	896.5	2,131.6	0.00	0.00	0.00
6,900.0	19.94	156.25	6,524.9	-1,967.2	910.3	2,165.7	0.00	0.00	0.00
7,000.0	19.94	156.25	6,618.9	-1,998.4	924.0	2,199.8	0.00	0.00	0.00
7,100.0	19.94	156.25	6,712.9	-2,029.6	937.7	2,233.9	0.00	0.00	0.00
7,200.0	19.94	156.25	6,806.9	-2,060.9	951.5	2,268.0	0.00	0.00	0.00
7,300.0	19.94	156.25	6,900.9	-2,092.1	965.2	2,302.1	0.00	0.00	0.00
7,400.0	19.94	156.25	6,994.9	-2,123.3	978.9	2,336.2	0.00	0.00	0.00
7,500.0	19.94	156.25	7,088.9	-2,154.5	992.7	2,370.3	0.00	0.00	0.00
7,600.0	19.94	156.25	7,182.9	-2,185.7	1,006.4	2,404.4	0.00	0.00	0.00
Drop 3° /100'									
7,660.3	19.94	156.25	7,239.6	-2,204.6	1,014.7	2,424.9	0.00	0.00	0.00
7,700.0	18.75	156.25	7,277.1	-2,216.6	1,020.0	2,438.1	3.00	-3.00	0.00
7,800.0	15.75	156.25	7,372.6	-2,243.7	1,031.9	2,467.7	3.00	-3.00	0.00
7,900.0	12.75	156.25	7,469.5	-2,266.3	1,041.9	2,492.3	3.00	-3.00	0.00
8,000.0	9.75	156.25	7,567.5	-2,284.1	1,049.7	2,511.8	3.00	-3.00	0.00
8,100.0	6.75	156.25	7,666.5	-2,297.3	1,055.5	2,526.2	3.00	-3.00	0.00
8,200.0	3.75	156.25	7,766.1	-2,305.6	1,059.2	2,535.3	3.00	-3.00	0.00
8,300.0	0.75	156.25	7,866.0	-2,309.2	1,060.8	2,539.3	3.00	-3.00	0.00
EOD @ Vertical / Build 1.5° / 100' - Ohio Creek - TOG									
8,325.0	0.00	0.00	7,891.0	-2,309.4	1,060.8	2,539.4	3.00	-3.00	0.00
8,400.0	1.12	250.17	7,966.0	-2,309.6	1,060.1	2,539.4	1.50	1.50	0.00
EOB @ 1.55° Inc. / 250.17° Azm									
8,428.4	1.55	250.17	7,994.4	-2,309.9	1,059.5	2,539.4	1.50	1.50	0.00
8,500.0	1.55	250.17	8,065.9	-2,310.5	1,057.7	2,539.3	0.00	0.00	0.00
Williams Fork									
8,563.1	1.55	250.17	8,129.0	-2,311.1	1,056.1	2,539.2	0.00	0.00	0.00

Database:	EDM 5000.1 Single User Db	Local Co-ordinate Reference:	Well BJU G35 FED 25A-35 496 - Slot BJU G35 FED 25A-35 496
Company:	Caerus Oil & Gas	TVD Reference:	RKB @ 8194.0usft (H&P#329)
Project:	Garfield County, CO	MD Reference:	RKB @ 8194.0usft (H&P#329)
Site:	NPM G35 496 Pad	North Reference:	True
Well:	BJU G35 FED 25A-35 496	Survey Calculation Method:	Minimum Curvature
Wellbore:	Wellbore #1		
Design:	Design #1		

Planned Survey									
Measured Depth (usft)	Inclination (°)	Azimuth (°)	Vertical Depth (usft)	+N/-S (usft)	+E/-W (usft)	Vertical Section (usft)	Dogleg Rate (°/100usft)	Build Rate (°/100usft)	Turn Rate (°/100usft)
8,600.0	1.55	250.17	8,165.9	-2,311.4	1,055.1	2,539.1	0.00	0.00	0.00
8,700.0	1.55	250.17	8,265.9	-2,312.3	1,052.6	2,539.0	0.00	0.00	0.00
8,800.0	1.55	250.17	8,365.8	-2,313.3	1,050.1	2,538.9	0.00	0.00	0.00
8,900.0	1.55	250.17	8,465.8	-2,314.2	1,047.5	2,538.8	0.00	0.00	0.00
9,000.0	1.55	250.17	8,565.7	-2,315.1	1,045.0	2,538.7	0.00	0.00	0.00
9,100.0	1.55	250.17	8,665.7	-2,316.0	1,042.4	2,538.5	0.00	0.00	0.00
9,200.0	1.55	250.17	8,765.7	-2,316.9	1,039.9	2,538.4	0.00	0.00	0.00
9,300.0	1.55	250.17	8,865.6	-2,317.9	1,037.3	2,538.3	0.00	0.00	0.00
9,400.0	1.55	250.17	8,965.6	-2,318.8	1,034.8	2,538.2	0.00	0.00	0.00
9,500.0	1.55	250.17	9,065.6	-2,319.7	1,032.2	2,538.0	0.00	0.00	0.00
9,600.0	1.55	250.17	9,165.5	-2,320.6	1,029.7	2,537.9	0.00	0.00	0.00
9,700.0	1.55	250.17	9,265.5	-2,321.5	1,027.1	2,537.8	0.00	0.00	0.00
9,800.0	1.55	250.17	9,365.5	-2,322.4	1,024.6	2,537.7	0.00	0.00	0.00
9,900.0	1.55	250.17	9,465.4	-2,323.4	1,022.1	2,537.6	0.00	0.00	0.00
10,000.0	1.55	250.17	9,565.4	-2,324.3	1,019.5	2,537.4	0.00	0.00	0.00
10,100.0	1.55	250.17	9,665.3	-2,325.2	1,017.0	2,537.3	0.00	0.00	0.00
10,200.0	1.55	250.17	9,765.3	-2,326.1	1,014.4	2,537.2	0.00	0.00	0.00
10,300.0	1.55	250.17	9,865.3	-2,327.0	1,011.9	2,537.1	0.00	0.00	0.00
10,400.0	1.55	250.17	9,965.2	-2,328.0	1,009.3	2,536.9	0.00	0.00	0.00
10,500.0	1.55	250.17	10,065.2	-2,328.9	1,006.8	2,536.8	0.00	0.00	0.00
10,600.0	1.55	250.17	10,165.2	-2,329.8	1,004.2	2,536.7	0.00	0.00	0.00
10,700.0	1.55	250.17	10,265.1	-2,330.7	1,001.7	2,536.6	0.00	0.00	0.00
10,800.0	1.55	250.17	10,365.1	-2,331.6	999.1	2,536.5	0.00	0.00	0.00
10,900.0	1.55	250.17	10,465.0	-2,332.5	996.6	2,536.3	0.00	0.00	0.00
11,000.0	1.55	250.17	10,565.0	-2,333.5	994.1	2,536.2	0.00	0.00	0.00
11,100.0	1.55	250.17	10,665.0	-2,334.4	991.5	2,536.1	0.00	0.00	0.00
11,200.0	1.55	250.17	10,764.9	-2,335.3	989.0	2,536.0	0.00	0.00	0.00
Cameo									
11,292.1	1.55	250.17	10,857.0	-2,336.1	986.6	2,535.9	0.00	0.00	0.00
11,300.0	1.55	250.17	10,864.9	-2,336.2	986.4	2,535.8	0.00	0.00	0.00
11,400.0	1.55	250.17	10,964.9	-2,337.1	983.9	2,535.7	0.00	0.00	0.00
11,500.0	1.55	250.17	11,064.8	-2,338.1	981.3	2,535.6	0.00	0.00	0.00
11,600.0	1.55	250.17	11,164.8	-2,339.0	978.8	2,535.5	0.00	0.00	0.00
11,700.0	1.55	250.17	11,264.8	-2,339.9	976.2	2,535.4	0.00	0.00	0.00
11,800.0	1.55	250.17	11,364.7	-2,340.8	973.7	2,535.2	0.00	0.00	0.00
Rollins									
11,868.3	1.55	250.17	11,433.0	-2,341.4	971.9	2,535.1	0.00	0.00	0.00
11,900.0	1.55	250.17	11,464.7	-2,341.7	971.1	2,535.1	0.00	0.00	0.00
12,000.0	1.55	250.17	11,564.6	-2,342.6	968.6	2,535.0	0.00	0.00	0.00
TD @ 12068.4' MD / 11633.0' TVD									
12,068.4	1.55	250.17	11,633.0	-2,343.3	966.9	2,534.9	0.00	0.00	0.00

Database:	EDM 5000.1 Single User Db	Local Co-ordinate Reference:	Well BJU G35 FED 25A-35 496 - Slot BJU G35 FED 25A-35 496
Company:	Caerus Oil & Gas	TVD Reference:	RKB @ 8194.0usft (H&P#329)
Project:	Garfield County, CO	MD Reference:	RKB @ 8194.0usft (H&P#329)
Site:	NPM G35 496 Pad	North Reference:	True
Well:	BJU G35 FED 25A-35 496	Survey Calculation Method:	Minimum Curvature
Wellbore:	Wellbore #1		
Design:	Design #1		

Design Targets

Target Name - hit/miss target - Shape	Dip Angle (°)	Dip Dir. (°)	TVD (usft)	+N/-S (usft)	+E/-W (usft)	Northing (usft)	Easting (usft)	Latitude	Longitude
OHCR - BJ G35 25A- - plan hits target center - Point	0.00	0.00	7,891.0	-2,309.4	1,060.8	14,412,961.88	2,448,249.35	39.653965	-108.130143
PBHL - BJ G35 25A- - plan hits target center - Ellipse (radii L100.0 W50.0 on 250.00 azi)	0.00	0.00	11,633.0	-2,343.3	966.9	14,412,925.00	2,448,156.50	39.653872	-108.130477

Formations

Measured Depth (usft)	Vertical Depth (usft)	Name	Lithology	Dip (°)	Dip Direction (°)
2,652.4	2,532.0	Wasatch			
5,843.8	5,532.0	Wasatch G			
6,165.0	5,834.0	Fort Union			
8,325.0	7,891.0	Ohio Creek			
8,325.0	7,891.0	TOG			
8,563.1	8,129.0	Williams Fork			
11,292.1	10,857.0	Cameo			
11,868.3	11,433.0	Rollins			

Plan Annotations

Measured Depth (usft)	Vertical Depth (usft)	Local Coordinates		Comment
		+N/-S (usft)	+E/-W (usft)	
200.0	200.0	0.0	0.0	Build 3° / 100'
864.7	851.3	-87.7	73.6	EOB @ 19.94° Inc. / 140.00° Azm / Turn 3° / 100'
1,048.8	1,024.6	-140.6	106.5	EOT @ 156.24° Azm
7,660.3	7,239.6	-2,204.6	1,014.7	Drop 3° / 100'
8,325.0	7,891.0	-2,309.4	1,060.8	EOD @ Vertical / Build 1.5° / 100'
8,428.4	7,994.4	-2,309.9	1,059.5	EOB @ 1.55° Inc. / 250.17° Azm
12,068.4	11,633.0	-2,343.3	966.9	TD @ 12068.4' MD / 11633.0' TVD