

Project: Garfield County, CO
 Site: NPM G35 496 Pad
 Well: BJU G35 FED 15A-35 496
 Wellbore: Wellbore #1
 Design: Design #1
 Latitude: 39.660335
 Longitude: -108.133944
 Ground Level: 8164.0
 RKB @ 8194.0usft (H&P#329)

FORMATION TOP DETAILS		
TVDPath	MDPath	Formation
2451.0	2587.3	Wasatch
5451.0	5834.8	Wasatch G
5796.0	6208.2	Fort Union
7786.0	8321.2	Ohio Creek
7786.0	8321.2	TOG
8031.0	8566.3	Williams Fork
10732.0	11268.3	Cameo
11345.0	11881.5	Rollins

REFERENCE INFORMATION

Co-ordinate (N/E) Reference: Well BJU G35 FED 15A-35 496 - Slot BJU G35 FED 15A-35 496, True North
 Vertical (TVD) Reference: RKB @ 8194.0usft (H&P#329)
 Section (VS) Reference: Slot - BJU G35 FED 15A-35 496(0.0N, 0.0E)
 Measured Depth Reference: RKB @ 8194.0usft (H&P#329)
 Calculation Method: Minimum Curvature

WELL DETAILS: BJU G35 FED 15A-35 496

+N/-S	+E/-W	Northing	Easting	Latitude	Longitude
0.0	0.0	14415247.40	8164.0 2447105.30	39.660335	-108.133944

PROJECT DETAILS: Garfield County, CO

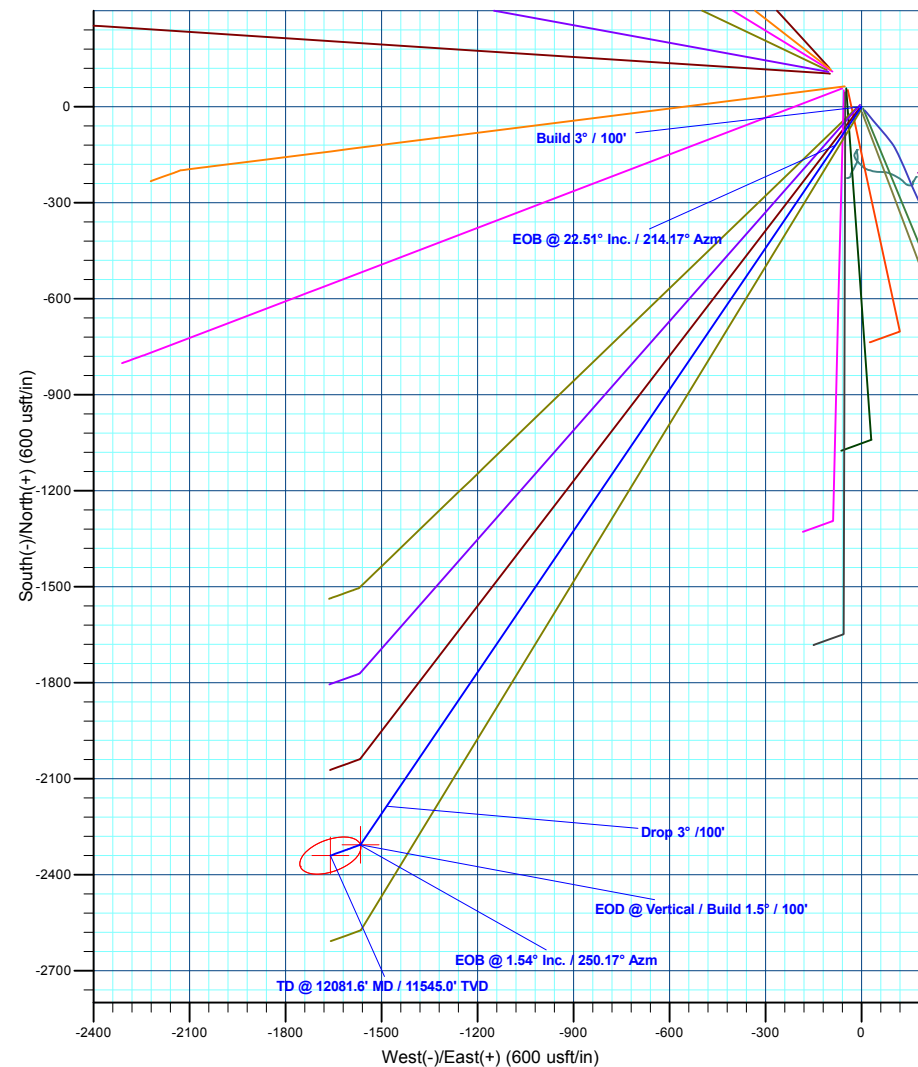
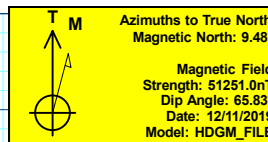
Geodetic System: Universal Transverse Mercator (US Survey Feet)
 Datum: NAD 1927 - Western US
 Ellipsoid: Clarke 1866
 Zone: Zone 12N (114 W to 108 W)
 System Datum: Mean Sea Level

DESIGN TARGET DETAILS

Name	TVD	+N/-S	+E/-W	Northing	Easting	Latitude	Longitude
OHCR - BJ G35 15A-35 496	7786.0	-2306.4	-1565.9	14412892.18	2445613.85	39.654005	-108.139503
PBHL - BJ G35 15A-35 496	11545.0	-2340.3	-1659.9	14412855.30	2445521.00	39.653912	-108.139836

SECTION DETAILS

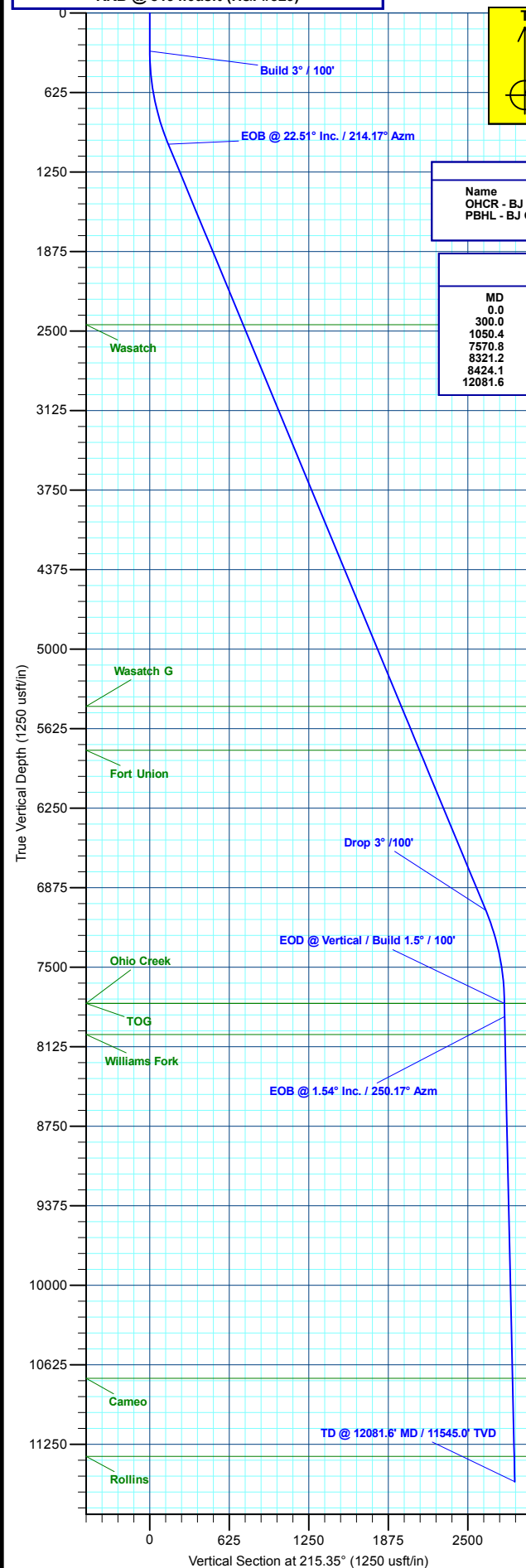
MD	Inc	Azi	TVD	+N/-S	+E/-W	Dleg	TFace	VSect	Annotation
0.0	0.00	0.00	0.0	0.0	0.0	0.00	0.00	0.0	
300.0	0.00	0.00	300.0	0.0	0.0	0.00	0.00	0.0	Build 3° / 100'
1050.4	22.51	214.17	1031.3	-120.4	-81.8	3.00	214.17	145.5	EOB @ 22.51° Inc. / 214.17° Azm
7570.8	22.51	214.17	7054.7	-2186.0	-1484.2	0.00	0.00	2641.6	Drop 3° / 100'
8321.2	0.00	0.00	7786.0	-2306.4	-1565.9	3.00	180.00	2787.2	EOD @ Vertical / Build 1.5° / 100'
8424.1	1.54	250.17	7888.9	-2306.9	-1567.2	1.50	250.17	2788.3	EOB @ 1.54° Inc. / 250.17° Azm
12081.6	1.54	250.17	11545.0	-2340.3	-1659.9	0.00	0.00	2869.2	TD @ 12081.6° MD / 11545.0° TVD



Plan: Design #1 (BJU G35 FED 15A-35 496/Wellbore #1)

Created By: Will Jircik

Date: 16:16, December 18 2019





Caerus Oil & Gas

Garfield County, CO

NPM G35 496 Pad

BJU G35 FED 15A-35 496 - Slot BJU G35 FED 15A-35 496

Wellbore #1

Plan: Design #1

QES Well Planning Report

18 December, 2019



Database:	EDM 5000.1 Single User Db	Local Co-ordinate Reference:	Well BJU G35 FED 15A-35 496 - Slot BJU G35 FED 15A-35 496
Company:	Caerus Oil & Gas	TVD Reference:	RKB @ 8194.0usft (H&P#329)
Project:	Garfield County, CO	MD Reference:	RKB @ 8194.0usft (H&P#329)
Site:	NPM G35 496 Pad	North Reference:	True
Well:	BJU G35 FED 15A-35 496	Survey Calculation Method:	Minimum Curvature
Wellbore:	Wellbore #1		
Design:	Design #1		

Project	Garfield County, CO		
Map System:	Universal Transverse Mercator (US Survey Fee	System Datum:	Mean Sea Level
Geo Datum:	NAD 1927 - Western US		
Map Zone:	Zone 12N (114 W to 108 W)		

Site		NPM G35 496 Pad			
Site Position:		Northing:	14,415,354.00 usft	Latitude:	39.660635
From:	Map	Easting:	2,447,010.80 usft	Longitude:	-108.134267
Position Uncertainty:	0.0 usft	Slot Radius:	13-3/16 "	Grid Convergence:	1.83 °

Well	BJU G35 FED 15A-35 496 - Slot BJU G35 FED 15A-35 496					
Well Position	+N/-S	-109.6 usft	Northing:	14,415,247.40 usft	Latitude:	39.660335
	+E/-W	91.0 usft	Easting:	2,447,105.30 usft	Longitude:	-108.133944
Position Uncertainty		0.0 usft	Wellhead Elevation:		Ground Level:	8,164.0 usft

Wellbore	Wellbore #1				
Magnetics	Model Name	Sample Date	Declination (°)	Dip Angle (°)	Field Strength (nT)
	HDGM_FILE	12/11/2019	9.48	65.83	51,251.00000000

Design	Design #1			
Audit Notes:				
Version:	Phase:	PLAN	Tie On Depth:	0.0
Vertical Section:	Depth From (TVD) (usft)	+N/-S (usft)	+E/-W (usft)	Direction (°)
	0.0	0.0	0.0	215.35

Plan Sections										
Measured Depth (usft)	Inclination (°)	Azimuth (°)	Vertical Depth (usft)	+N/-S (usft)	+E/-W (usft)	Dogleg Rate (°/100usft)	Build Rate (°/100usft)	Turn Rate (°/100usft)	TFO (°)	Target
0.0	0.00	0.00	0.0	0.0	0.0	0.00	0.00	0.00	0.00	
300.0	0.00	0.00	300.0	0.0	0.0	0.00	0.00	0.00	0.00	
1,050.4	22.51	214.17	1,031.3	-120.4	-81.8	3.00	3.00	0.00	214.17	
7,570.8	22.51	214.17	7,054.7	-2,186.0	-1,484.2	0.00	0.00	0.00	0.00	
8,321.2	0.00	0.00	7,786.0	-2,306.4	-1,565.9	3.00	-3.00	0.00	180.00	OHCR - BJ G35 15
8,424.1	1.54	250.17	7,888.9	-2,306.9	-1,567.2	1.50	1.50	-106.73	250.17	
12,081.6	1.54	250.17	11,545.0	-2,340.3	-1,659.9	0.00	0.00	0.00	0.00	PBHL - BJ G35 15

Database:	EDM 5000.1 Single User Db	Local Co-ordinate Reference:	Well BJU G35 FED 15A-35 496 - Slot BJU G35 FED 15A-35 496
Company:	Caerus Oil & Gas	TVD Reference:	RKB @ 8194.0usft (H&P#329)
Project:	Garfield County, CO	MD Reference:	RKB @ 8194.0usft (H&P#329)
Site:	NPM G35 496 Pad	North Reference:	True
Well:	BJU G35 FED 15A-35 496	Survey Calculation Method:	Minimum Curvature
Wellbore:	Wellbore #1		
Design:	Design #1		

Planned Survey									
Measured Depth (usft)	Inclination (°)	Azimuth (°)	Vertical Depth (usft)	+N/-S (usft)	+E/-W (usft)	Vertical Section (usft)	Dogleg Rate (°/100usft)	Build Rate (°/100usft)	Turn Rate (°/100usft)
0.0	0.00	0.00	0.0	0.0	0.0	0.0	0.00	0.00	0.00
100.0	0.00	0.00	100.0	0.0	0.0	0.0	0.00	0.00	0.00
200.0	0.00	0.00	200.0	0.0	0.0	0.0	0.00	0.00	0.00
Build 3° / 100'									
300.0	0.00	0.00	300.0	0.0	0.0	0.0	0.00	0.00	0.00
400.0	3.00	214.17	400.0	-2.2	-1.5	2.6	3.00	3.00	0.00
500.0	6.00	214.17	499.6	-8.7	-5.9	10.5	3.00	3.00	0.00
600.0	9.00	214.17	598.8	-19.5	-13.2	23.5	3.00	3.00	0.00
700.0	12.00	214.17	697.1	-34.5	-23.4	41.7	3.00	3.00	0.00
800.0	15.00	214.17	794.3	-53.8	-36.6	65.1	3.00	3.00	0.00
900.0	18.00	214.17	890.2	-77.3	-52.5	93.5	3.00	3.00	0.00
1,000.0	21.00	214.17	984.4	-104.9	-71.3	126.8	3.00	3.00	0.00
EOB @ 22.51° Inc. / 214.17° Azm									
1,050.4	22.51	214.17	1,031.3	-120.4	-81.8	145.5	3.00	3.00	0.00
1,100.0	22.51	214.17	1,077.1	-136.1	-92.4	164.5	0.00	0.00	0.00
1,200.0	22.51	214.17	1,169.4	-167.8	-113.9	202.8	0.00	0.00	0.00
1,300.0	22.51	214.17	1,261.8	-199.5	-135.4	241.1	0.00	0.00	0.00
1,400.0	22.51	214.17	1,354.2	-231.2	-156.9	279.3	0.00	0.00	0.00
1,500.0	22.51	214.17	1,446.6	-262.8	-178.4	317.6	0.00	0.00	0.00
1,600.0	22.51	214.17	1,539.0	-294.5	-200.0	355.9	0.00	0.00	0.00
1,700.0	22.51	214.17	1,631.3	-326.2	-221.5	394.2	0.00	0.00	0.00
1,800.0	22.51	214.17	1,723.7	-357.9	-243.0	432.5	0.00	0.00	0.00
1,900.0	22.51	214.17	1,816.1	-389.5	-264.5	470.7	0.00	0.00	0.00
2,000.0	22.51	214.17	1,908.5	-421.2	-286.0	509.0	0.00	0.00	0.00
2,100.0	22.51	214.17	2,000.9	-452.9	-307.5	547.3	0.00	0.00	0.00
2,200.0	22.51	214.17	2,093.2	-484.6	-329.0	585.6	0.00	0.00	0.00
2,300.0	22.51	214.17	2,185.6	-516.3	-350.5	623.9	0.00	0.00	0.00
2,400.0	22.51	214.17	2,278.0	-547.9	-372.0	662.2	0.00	0.00	0.00
2,500.0	22.51	214.17	2,370.4	-579.6	-393.5	700.4	0.00	0.00	0.00
Wasatch									
2,587.3	22.51	214.17	2,451.0	-607.3	-412.3	733.9	0.00	0.00	0.00
2,600.0	22.51	214.17	2,462.7	-611.3	-415.0	738.7	0.00	0.00	0.00
2,700.0	22.51	214.17	2,555.1	-643.0	-436.5	777.0	0.00	0.00	0.00
2,800.0	22.51	214.17	2,647.5	-674.7	-458.1	815.3	0.00	0.00	0.00
2,900.0	22.51	214.17	2,739.9	-706.3	-479.6	853.6	0.00	0.00	0.00
3,000.0	22.51	214.17	2,832.3	-738.0	-501.1	891.8	0.00	0.00	0.00
3,100.0	22.51	214.17	2,924.6	-769.7	-522.6	930.1	0.00	0.00	0.00
3,200.0	22.51	214.17	3,017.0	-801.4	-544.1	968.4	0.00	0.00	0.00
3,300.0	22.51	214.17	3,109.4	-833.0	-565.6	1,006.7	0.00	0.00	0.00
3,400.0	22.51	214.17	3,201.8	-864.7	-587.1	1,045.0	0.00	0.00	0.00
3,500.0	22.51	214.17	3,294.2	-896.4	-608.6	1,083.3	0.00	0.00	0.00
3,600.0	22.51	214.17	3,386.5	-928.1	-630.1	1,121.5	0.00	0.00	0.00
3,700.0	22.51	214.17	3,478.9	-959.8	-651.6	1,159.8	0.00	0.00	0.00
3,800.0	22.51	214.17	3,571.3	-991.4	-673.1	1,198.1	0.00	0.00	0.00
3,900.0	22.51	214.17	3,663.7	-1,023.1	-694.6	1,236.4	0.00	0.00	0.00
4,000.0	22.51	214.17	3,756.1	-1,054.8	-716.1	1,274.7	0.00	0.00	0.00
4,100.0	22.51	214.17	3,848.4	-1,086.5	-737.7	1,312.9	0.00	0.00	0.00
4,200.0	22.51	214.17	3,940.8	-1,118.1	-759.2	1,351.2	0.00	0.00	0.00
4,300.0	22.51	214.17	4,033.2	-1,149.8	-780.7	1,389.5	0.00	0.00	0.00
4,400.0	22.51	214.17	4,125.6	-1,181.5	-802.2	1,427.8	0.00	0.00	0.00
4,500.0	22.51	214.17	4,217.9	-1,213.2	-823.7	1,466.1	0.00	0.00	0.00
4,600.0	22.51	214.17	4,310.3	-1,244.9	-845.2	1,504.4	0.00	0.00	0.00
4,700.0	22.51	214.17	4,402.7	-1,276.5	-866.7	1,542.6	0.00	0.00	0.00

Database:	EDM 5000.1 Single User Db	Local Co-ordinate Reference:	Well BJU G35 FED 15A-35 496 - Slot BJU G35 FED 15A-35 496
Company:	Caerus Oil & Gas	TVD Reference:	RKB @ 8194.0usft (H&P#329)
Project:	Garfield County, CO	MD Reference:	RKB @ 8194.0usft (H&P#329)
Site:	NPM G35 496 Pad	North Reference:	True
Well:	BJU G35 FED 15A-35 496	Survey Calculation Method:	Minimum Curvature
Wellbore:	Wellbore #1		
Design:	Design #1		

Planned Survey									
Measured Depth (usft)	Inclination (°)	Azimuth (°)	Vertical Depth (usft)	+N/-S (usft)	+E/-W (usft)	Vertical Section (usft)	Dogleg Rate (°/100usft)	Build Rate (°/100usft)	Turn Rate (°/100usft)
4,800.0	22.51	214.17	4,495.1	-1,308.2	-888.2	1,580.9	0.00	0.00	0.00
4,900.0	22.51	214.17	4,587.5	-1,339.9	-909.7	1,619.2	0.00	0.00	0.00
5,000.0	22.51	214.17	4,679.8	-1,371.6	-931.2	1,657.5	0.00	0.00	0.00
5,100.0	22.51	214.17	4,772.2	-1,403.3	-952.7	1,695.8	0.00	0.00	0.00
5,200.0	22.51	214.17	4,864.6	-1,434.9	-974.2	1,734.0	0.00	0.00	0.00
5,300.0	22.51	214.17	4,957.0	-1,466.6	-995.8	1,772.3	0.00	0.00	0.00
5,400.0	22.51	214.17	5,049.4	-1,498.3	-1,017.3	1,810.6	0.00	0.00	0.00
5,500.0	22.51	214.17	5,141.7	-1,530.0	-1,038.8	1,848.9	0.00	0.00	0.00
5,600.0	22.51	214.17	5,234.1	-1,561.6	-1,060.3	1,887.2	0.00	0.00	0.00
5,700.0	22.51	214.17	5,326.5	-1,593.3	-1,081.8	1,925.5	0.00	0.00	0.00
5,800.0	22.51	214.17	5,418.9	-1,625.0	-1,103.3	1,963.7	0.00	0.00	0.00
Wasatch G									
5,834.8	22.51	214.17	5,451.0	-1,636.0	-1,110.8	1,977.1	0.00	0.00	0.00
5,900.0	22.51	214.17	5,511.3	-1,656.7	-1,124.8	2,002.0	0.00	0.00	0.00
6,000.0	22.51	214.17	5,603.6	-1,688.4	-1,146.3	2,040.3	0.00	0.00	0.00
6,100.0	22.51	214.17	5,696.0	-1,720.0	-1,167.8	2,078.6	0.00	0.00	0.00
6,200.0	22.51	214.17	5,788.4	-1,751.7	-1,189.3	2,116.9	0.00	0.00	0.00
Fort Union									
6,208.2	22.51	214.17	5,796.0	-1,754.3	-1,191.1	2,120.0	0.00	0.00	0.00
6,300.0	22.51	214.17	5,880.8	-1,783.4	-1,210.8	2,155.2	0.00	0.00	0.00
6,400.0	22.51	214.17	5,973.1	-1,815.1	-1,232.3	2,193.4	0.00	0.00	0.00
6,500.0	22.51	214.17	6,065.5	-1,846.8	-1,253.8	2,231.7	0.00	0.00	0.00
6,600.0	22.51	214.17	6,157.9	-1,878.4	-1,275.4	2,270.0	0.00	0.00	0.00
6,700.0	22.51	214.17	6,250.3	-1,910.1	-1,296.9	2,308.3	0.00	0.00	0.00
6,800.0	22.51	214.17	6,342.7	-1,941.8	-1,318.4	2,346.6	0.00	0.00	0.00
6,900.0	22.51	214.17	6,435.0	-1,973.5	-1,339.9	2,384.8	0.00	0.00	0.00
7,000.0	22.51	214.17	6,527.4	-2,005.1	-1,361.4	2,423.1	0.00	0.00	0.00
7,100.0	22.51	214.17	6,619.8	-2,036.8	-1,382.9	2,461.4	0.00	0.00	0.00
7,200.0	22.51	214.17	6,712.2	-2,068.5	-1,404.4	2,499.7	0.00	0.00	0.00
7,300.0	22.51	214.17	6,804.6	-2,100.2	-1,425.9	2,538.0	0.00	0.00	0.00
7,400.0	22.51	214.17	6,896.9	-2,131.9	-1,447.4	2,576.3	0.00	0.00	0.00
7,500.0	22.51	214.17	6,989.3	-2,163.5	-1,468.9	2,614.5	0.00	0.00	0.00
Drop 3° /100'									
7,570.8	22.51	214.17	7,054.7	-2,186.0	-1,484.2	2,641.6	0.00	0.00	0.00
7,600.0	21.64	214.17	7,081.8	-2,195.0	-1,490.3	2,652.6	3.00	-3.00	0.00
7,700.0	18.64	214.17	7,175.7	-2,223.5	-1,509.7	2,687.0	3.00	-3.00	0.00
7,800.0	15.64	214.17	7,271.2	-2,247.9	-1,526.2	2,716.5	3.00	-3.00	0.00
7,900.0	12.64	214.17	7,368.2	-2,268.1	-1,539.9	2,740.9	3.00	-3.00	0.00
8,000.0	9.64	214.17	7,466.3	-2,284.1	-1,550.8	2,760.2	3.00	-3.00	0.00
8,100.0	6.64	214.17	7,565.3	-2,295.8	-1,558.7	2,774.4	3.00	-3.00	0.00
8,200.0	3.64	214.17	7,664.8	-2,303.2	-1,563.8	2,783.3	3.00	-3.00	0.00
8,300.0	0.64	214.17	7,764.8	-2,306.3	-1,565.8	2,787.0	3.00	-3.00	0.00
EOD @ Vertical / Build 1.5° / 100' - Ohio Creek - TOG									
8,321.2	0.00	0.00	7,786.0	-2,306.4	-1,565.9	2,787.2	3.00	-3.00	0.00
8,400.0	1.18	250.17	7,864.8	-2,306.7	-1,566.7	2,787.8	1.50	1.50	0.00
EOB @ 1.54° Inc. / 250.17° Azm									
8,424.1	1.54	250.17	7,888.9	-2,306.9	-1,567.2	2,788.3	1.50	1.50	0.00
8,500.0	1.54	250.17	7,964.7	-2,307.5	-1,569.1	2,790.0	0.00	0.00	0.00
Williams Fork									
8,566.3	1.54	250.17	8,031.0	-2,308.2	-1,570.8	2,791.4	0.00	0.00	0.00
8,600.0	1.54	250.17	8,064.7	-2,308.5	-1,571.7	2,792.2	0.00	0.00	0.00
8,700.0	1.54	250.17	8,164.6	-2,309.4	-1,574.2	2,794.4	0.00	0.00	0.00

Database:	EDM 5000.1 Single User Db	Local Co-ordinate Reference:	Well BJU G35 FED 15A-35 496 - Slot BJU G35 FED 15A-35 496
Company:	Caerus Oil & Gas	TVD Reference:	RKB @ 8194.0usft (H&P#329)
Project:	Garfield County, CO	MD Reference:	RKB @ 8194.0usft (H&P#329)
Site:	NPM G35 496 Pad	North Reference:	True
Well:	BJU G35 FED 15A-35 496	Survey Calculation Method:	Minimum Curvature
Wellbore:	Wellbore #1		
Design:	Design #1		

Planned Survey									
Measured Depth (usft)	Inclination (°)	Azimuth (°)	Vertical Depth (usft)	+N/-S (usft)	+E/-W (usft)	Vertical Section (usft)	Dogleg Rate (°/100usft)	Build Rate (°/100usft)	Turn Rate (°/100usft)
8,800.0	1.54	250.17	8,264.6	-2,310.3	-1,576.7	2,796.6	0.00	0.00	0.00
8,900.0	1.54	250.17	8,364.6	-2,311.2	-1,579.3	2,798.8	0.00	0.00	0.00
9,000.0	1.54	250.17	8,464.5	-2,312.1	-1,581.8	2,801.0	0.00	0.00	0.00
9,100.0	1.54	250.17	8,564.5	-2,313.0	-1,584.3	2,803.2	0.00	0.00	0.00
9,200.0	1.54	250.17	8,664.5	-2,313.9	-1,586.9	2,805.4	0.00	0.00	0.00
9,300.0	1.54	250.17	8,764.4	-2,314.9	-1,589.4	2,807.7	0.00	0.00	0.00
9,400.0	1.54	250.17	8,864.4	-2,315.8	-1,591.9	2,809.9	0.00	0.00	0.00
9,500.0	1.54	250.17	8,964.4	-2,316.7	-1,594.5	2,812.1	0.00	0.00	0.00
9,600.0	1.54	250.17	9,064.3	-2,317.6	-1,597.0	2,814.3	0.00	0.00	0.00
9,700.0	1.54	250.17	9,164.3	-2,318.5	-1,599.5	2,816.5	0.00	0.00	0.00
9,800.0	1.54	250.17	9,264.2	-2,319.4	-1,602.1	2,818.7	0.00	0.00	0.00
9,900.0	1.54	250.17	9,364.2	-2,320.3	-1,604.6	2,820.9	0.00	0.00	0.00
10,000.0	1.54	250.17	9,464.2	-2,321.3	-1,607.1	2,823.1	0.00	0.00	0.00
10,100.0	1.54	250.17	9,564.1	-2,322.2	-1,609.7	2,825.4	0.00	0.00	0.00
10,200.0	1.54	250.17	9,664.1	-2,323.1	-1,612.2	2,827.6	0.00	0.00	0.00
10,300.0	1.54	250.17	9,764.1	-2,324.0	-1,614.7	2,829.8	0.00	0.00	0.00
10,400.0	1.54	250.17	9,864.0	-2,324.9	-1,617.3	2,832.0	0.00	0.00	0.00
10,500.0	1.54	250.17	9,964.0	-2,325.8	-1,619.8	2,834.2	0.00	0.00	0.00
10,600.0	1.54	250.17	10,064.0	-2,326.7	-1,622.3	2,836.4	0.00	0.00	0.00
10,700.0	1.54	250.17	10,163.9	-2,327.7	-1,624.9	2,838.6	0.00	0.00	0.00
10,800.0	1.54	250.17	10,263.9	-2,328.6	-1,627.4	2,840.8	0.00	0.00	0.00
10,900.0	1.54	250.17	10,363.8	-2,329.5	-1,630.0	2,843.0	0.00	0.00	0.00
11,000.0	1.54	250.17	10,463.8	-2,330.4	-1,632.5	2,845.3	0.00	0.00	0.00
11,100.0	1.54	250.17	10,563.8	-2,331.3	-1,635.0	2,847.5	0.00	0.00	0.00
11,200.0	1.54	250.17	10,663.7	-2,332.2	-1,637.6	2,849.7	0.00	0.00	0.00
Cameo									
11,268.3	1.54	250.17	10,732.0	-2,332.8	-1,639.3	2,851.2	0.00	0.00	0.00
11,300.0	1.54	250.17	10,763.7	-2,333.1	-1,640.1	2,851.9	0.00	0.00	0.00
11,400.0	1.54	250.17	10,863.7	-2,334.1	-1,642.6	2,854.1	0.00	0.00	0.00
11,500.0	1.54	250.17	10,963.6	-2,335.0	-1,645.2	2,856.3	0.00	0.00	0.00
11,600.0	1.54	250.17	11,063.6	-2,335.9	-1,647.7	2,858.5	0.00	0.00	0.00
11,700.0	1.54	250.17	11,163.6	-2,336.8	-1,650.2	2,860.7	0.00	0.00	0.00
11,800.0	1.54	250.17	11,263.5	-2,337.7	-1,652.8	2,862.9	0.00	0.00	0.00
Rollins									
11,881.5	1.54	250.17	11,345.0	-2,338.5	-1,654.8	2,864.7	0.00	0.00	0.00
11,900.0	1.54	250.17	11,363.5	-2,338.6	-1,655.3	2,865.2	0.00	0.00	0.00
12,000.0	1.54	250.17	11,463.4	-2,339.5	-1,657.8	2,867.4	0.00	0.00	0.00
TD @ 12081.6' MD / 11545.0' TVD									
12,081.6	1.54	250.17	11,545.0	-2,340.3	-1,659.9	2,869.2	0.00	0.00	0.00

Database:	EDM 5000.1 Single User Db	Local Co-ordinate Reference:	Well BJU G35 FED 15A-35 496 - Slot BJU G35 FED 15A-35 496
Company:	Caerus Oil & Gas	TVD Reference:	RKB @ 8194.0usft (H&P#329)
Project:	Garfield County, CO	MD Reference:	RKB @ 8194.0usft (H&P#329)
Site:	NPM G35 496 Pad	North Reference:	True
Well:	BJU G35 FED 15A-35 496	Survey Calculation Method:	Minimum Curvature
Wellbore:	Wellbore #1		
Design:	Design #1		

Design Targets

Target Name

- hit/miss target - Shape	Dip Angle (°)	Dip Dir. (°)	TVD (usft)	+N/-S (usft)	+E/-W (usft)	Northing (usft)	Easting (usft)	Latitude	Longitude
OHCR - BJ G35 15A- - plan hits target center - Point	0.00	0.00	7,786.0	-2,306.4	-1,565.9	14,412,892.18	2,445,613.85	39.654005	-108.139503
PBHL - BJ G35 15A- - plan hits target center - Ellipse (radii L100.0 W50.0 on 250.00 azi)	0.00	0.00	11,545.0	-2,340.3	-1,659.9	14,412,855.30	2,445,521.00	39.653912	-108.139837

Formations

Measured Depth (usft)	Vertical Depth (usft)	Name	Lithology	Dip (°)	Dip Direction (°)
2,587.3	2,451.0	Wasatch			
5,834.8	5,451.0	Wasatch G			
6,208.2	5,796.0	Fort Union			
8,321.2	7,786.0	Ohio Creek			
8,321.2	7,786.0	TOG			
8,566.3	8,031.0	Williams Fork			
11,268.3	10,732.0	Cameo			
11,881.5	11,345.0	Rollins			

Plan Annotations

Measured Depth (usft)	Vertical Depth (usft)	Local Coordinates		Comment
		+N/-S (usft)	+E/-W (usft)	
300.0	300.0	0.0	0.0	Build 3° / 100'
1,050.4	1,031.3	-120.4	-81.8	EOB @ 22.51° Inc. / 214.17° Azm
7,570.8	7,054.7	-2,186.0	-1,484.2	Drop 3° / 100'
8,321.2	7,786.0	-2,306.4	-1,565.9	EOD @ Vertical / Build 1.5° / 100'
8,424.1	7,888.9	-2,306.9	-1,567.2	EOB @ 1.54° Inc. / 250.17° Azm
12,081.6	11,545.0	-2,340.3	-1,659.9	TD @ 12081.6' MD / 11545.0' TVD