

Project: Garfield County, CO
 Site: NPM G35 496 Pad
 Well: BJU G35 FED 14C-35 496
 Wellbore: Wellbore #1
 Design: Design #1
 Latitude: 39.660350
 Longitude: -108.133961
 Ground Level: 8164.0
 RKB @ 8194.0usft (H&P#329)

FORMATION TOP DETAILS			
TVDPath	MDPath	Formation	
2470.0	2528.3	Wasatch	
5470.0	5768.7	Wasatch G	
5795.0	6119.8	Fort Union	
7798.0	8243.9	Ohio Creek	
7798.0	8243.9	TOG	
8043.0	8488.9	Williams Fork	
10757.0	11203.9	Cameo	
11359.0	11806.1	Rollins	

REFERENCE INFORMATION

Co-ordinate (N/E) Reference: Well BJU G35 FED 14C-35 496 - Slot BJU G35 FED 14C-35 496, True North
 Vertical (TVD) Reference: RKB @ 8194.0usft (H&P#329)
 Section (VS) Reference: Slot - BJU G35 FED 14C-35 496(0.0N, 0.0E)
 Measured Depth Reference: RKB @ 8194.0usft (H&P#329)
 Calculation Method: Minimum Curvature

WELL DETAILS: BJU G35 FED 14C-35 496

8164.0
 +N/-S 0.0 +E/-W 0.0 Northing 14415253.00 Easting 2447100.30 Latitude 39.660350 Longitude -108.133961

PROJECT DETAILS: Garfield County, CO

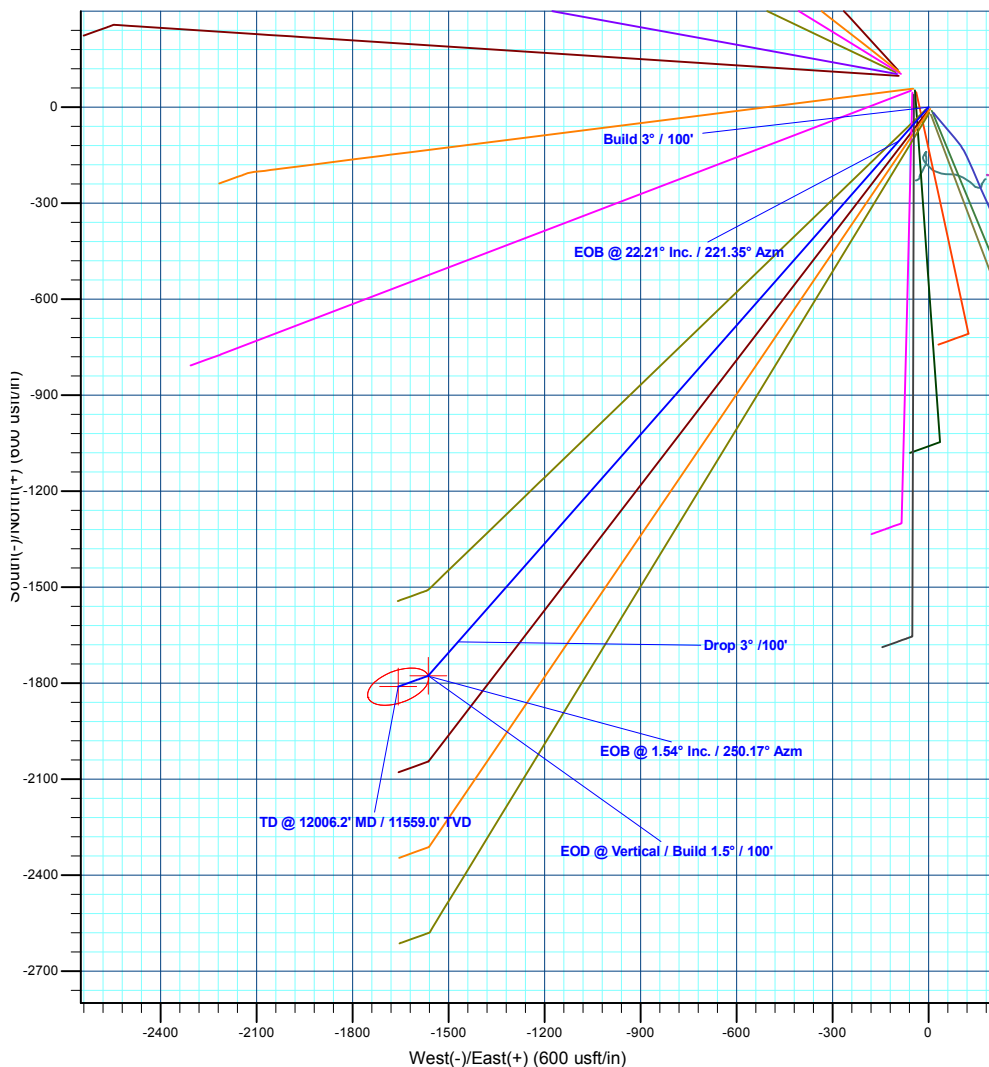
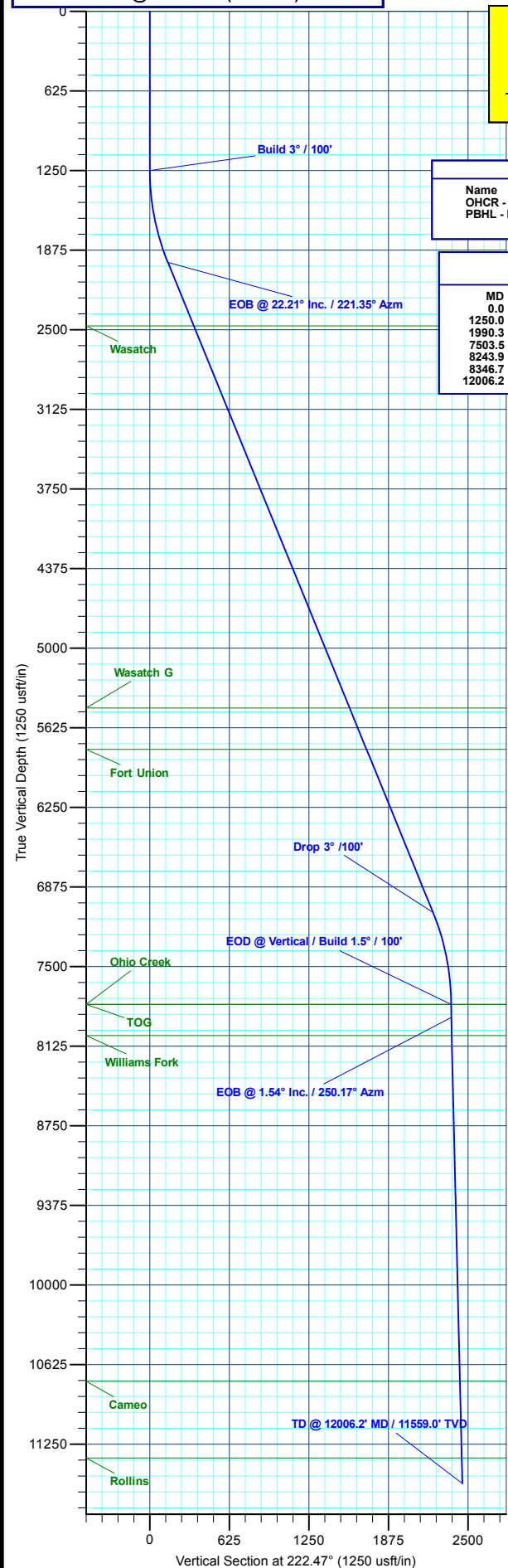
Geodetic System: Universal Transverse Mercator (US Survey Feet)
 Datum: NAD 1927 - Western US
 Ellipsoid: Clarke 1866
 Zone: Zone 12N (114 W to 108 W)
 System Datum: Mean Sea Level

DESIGN TARGET DETAILS

Name	TVD	+N/-S	+E/-W	Northing	Easting	Latitude	Longitude
OHCR - BJ G35 14C-35 496	7798.0	-1777.3	-1563.9	14413426.68	2445593.95	39.655473	-108.139513
PBHL - BJ G35 14C-35 496	11559.0	-1811.2	-1657.9	14413389.80	2445501.10	39.655380	-108.139847

SECTION DETAILS

MD	Inc	Azi	TVD	+N/-S	+E/-W	Dleg	TFace	VSect	Annotation
0.0	0.00	0.00	0.0	0.0	0.0	0.00	0.00	0.0	
1250.0	0.00	0.00	1250.0	0.0	0.0	0.00	0.00	0.0	Build 3° / 100'
1990.3	22.21	221.35	1971.9	-106.4	-93.6	3.00	221.35	141.7	EOB @ 22.21° Inc. / 221.35° Azm
7503.5	22.21	221.35	7076.1	-1670.9	-1470.3	0.00	0.00	0.00	Drop 3° / 100'
8243.9	0.00	0.00	7798.0	-1777.3	-1563.9	3.00	180.00	236.9	EOD @ Vertical / Build 1.5° / 100'
8346.7	1.54	250.17	7900.8	-1777.7	-1565.2	1.50	250.17	236.2	EOB @ 1.54° Inc. / 250.17° Azm
12006.2	1.54	250.17	11559.0	-1811.2	-1657.9	0.00	0.00	2455.4	TD @ 12006.2' MD / 11559.0' TVD



Plan: Design #1 (BJU G35 FED 14C-35 496/Wellbore #1)

Created By: Will Jircik

Date: 16:11, December 18 2019



Caerus Oil & Gas

Garfield County, CO

NPM G35 496 Pad

BJU G35 FED 14C-35 496 - Slot BJU G35 FED 14C-35 496

Wellbore #1

Plan: Design #1

QES Well Planning Report

18 December, 2019



Database:	EDM 5000.1 Single User Db	Local Co-ordinate Reference:	Well BJU G35 FED 14C-35 496 - Slot BJU G35 FED 14C-35 496
Company:	Caerus Oil & Gas	TVD Reference:	RKB @ 8194.0usft (H&P#329)
Project:	Garfield County, CO	MD Reference:	RKB @ 8194.0usft (H&P#329)
Site:	NPM G35 496 Pad	North Reference:	True
Well:	BJU G35 FED 14C-35 496	Survey Calculation Method:	Minimum Curvature
Wellbore:	Wellbore #1		
Design:	Design #1		

Project	Garfield County, CO		
Map System:	Universal Transverse Mercator (US Survey Fee	System Datum:	Mean Sea Level
Geo Datum:	NAD 1927 - Western US		
Map Zone:	Zone 12N (114 W to 108 W)		

Site	NPM G35 496 Pad		
Site Position:		Northing:	14,415,354.00 usft
From:	Map	Easting:	2,447,010.80 usft
Position Uncertainty:	0.0 usft	Slot Radius:	13-3/16 "
		Latitude:	39.660635
		Longitude:	-108.134267
		Grid Convergence:	1.83 °

Well	BJU G35 FED 14C-35 496 - Slot BJU G35 FED 14C-35 496		
Well Position	+N/-S	-103.8 usft	Northing: 14,415,253.00 usft
	+E/-W	86.2 usft	Easting: 2,447,100.30 usft
Position Uncertainty		0.0 usft	Wellhead Elevation:
			Ground Level: 8,164.0 usft

Wellbore	Wellbore #1				
Magnetics	Model Name	Sample Date	Declination (°)	Dip Angle (°)	Field Strength (nT)
	HDGM_FILE	12/11/2019	9.48	65.83	51,251.00000000

Design	Design #1			
Audit Notes:				
Version:	Phase:	PLAN	Tie On Depth:	0.0
Vertical Section:	Depth From (TVD) (usft)	+N/-S (usft)	+E/-W (usft)	Direction (°)
	0.0	0.0	0.0	222.47

Plan Sections										
Measured Depth (usft)	Inclination (°)	Azimuth (°)	Vertical Depth (usft)	+N/-S (usft)	+E/-W (usft)	Dogleg Rate (°/100usft)	Build Rate (°/100usft)	Turn Rate (°/100usft)	TFO (°)	Target
0.0	0.00	0.00	0.0	0.0	0.0	0.00	0.00	0.00	0.00	
1,250.0	0.00	0.00	1,250.0	0.0	0.0	0.00	0.00	0.00	0.00	
1,990.3	22.21	221.35	1,971.9	-106.4	-93.6	3.00	3.00	0.00	221.35	
7,503.5	22.21	221.35	7,076.1	-1,670.9	-1,470.3	0.00	0.00	0.00	0.00	
8,243.9	0.00	0.00	7,798.0	-1,777.3	-1,563.9	3.00	-3.00	0.00	180.00	OHCR - BJ G35 14
8,346.7	1.54	250.17	7,900.8	-1,777.7	-1,565.2	1.50	1.50	-106.79	250.17	
12,006.2	1.54	250.17	11,559.0	-1,811.2	-1,657.9	0.00	0.00	0.00	0.00	PBHL - BJ G35 14

Database:	EDM 5000.1 Single User Db	Local Co-ordinate Reference:	Well BJU G35 FED 14C-35 496 - Slot BJU G35 FED 14C-35 496
Company:	Caerus Oil & Gas	TVD Reference:	RKB @ 8194.0usft (H&P#329)
Project:	Garfield County, CO	MD Reference:	RKB @ 8194.0usft (H&P#329)
Site:	NPM G35 496 Pad	North Reference:	True
Well:	BJU G35 FED 14C-35 496	Survey Calculation Method:	Minimum Curvature
Wellbore:	Wellbore #1		
Design:	Design #1		

Planned Survey										
Measured Depth (usft)	Inclination (°)	Azimuth (°)	Vertical Depth (usft)	+N/-S (usft)	+E/-W (usft)	Vertical Section (usft)	Dogleg Rate (°/100usft)	Build Rate (°/100usft)	Turn Rate (°/100usft)	
0.0	0.00	0.00	0.0	0.0	0.0	0.0	0.00	0.00	0.00	
100.0	0.00	0.00	100.0	0.0	0.0	0.0	0.00	0.00	0.00	
200.0	0.00	0.00	200.0	0.0	0.0	0.0	0.00	0.00	0.00	
300.0	0.00	0.00	300.0	0.0	0.0	0.0	0.00	0.00	0.00	
400.0	0.00	0.00	400.0	0.0	0.0	0.0	0.00	0.00	0.00	
500.0	0.00	0.00	500.0	0.0	0.0	0.0	0.00	0.00	0.00	
600.0	0.00	0.00	600.0	0.0	0.0	0.0	0.00	0.00	0.00	
700.0	0.00	0.00	700.0	0.0	0.0	0.0	0.00	0.00	0.00	
800.0	0.00	0.00	800.0	0.0	0.0	0.0	0.00	0.00	0.00	
900.0	0.00	0.00	900.0	0.0	0.0	0.0	0.00	0.00	0.00	
1,000.0	0.00	0.00	1,000.0	0.0	0.0	0.0	0.00	0.00	0.00	
1,100.0	0.00	0.00	1,100.0	0.0	0.0	0.0	0.00	0.00	0.00	
1,200.0	0.00	0.00	1,200.0	0.0	0.0	0.0	0.00	0.00	0.00	
Build 3° / 100'										
1,250.0	0.00	0.00	1,250.0	0.0	0.0	0.0	0.00	0.00	0.00	
1,300.0	1.50	221.35	1,300.0	-0.5	-0.4	0.7	3.00	3.00	0.00	
1,400.0	4.50	221.35	1,399.8	-4.4	-3.9	5.9	3.00	3.00	0.00	
1,500.0	7.50	221.35	1,499.3	-12.3	-10.8	16.3	3.00	3.00	0.00	
1,600.0	10.50	221.35	1,598.0	-24.0	-21.1	32.0	3.00	3.00	0.00	
1,700.0	13.50	221.35	1,695.8	-39.6	-34.9	52.8	3.00	3.00	0.00	
1,800.0	16.50	221.35	1,792.4	-59.0	-52.0	78.6	3.00	3.00	0.00	
1,900.0	19.50	221.35	1,887.5	-82.2	-72.4	109.5	3.00	3.00	0.00	
EOB @ 22.21° Inc. / 221.35° Azm										
1,990.3	22.21	221.35	1,971.9	-106.4	-93.6	141.7	3.00	3.00	0.00	
2,000.0	22.21	221.35	1,980.9	-109.1	-96.0	145.3	0.00	0.00	0.00	
2,100.0	22.21	221.35	2,073.5	-137.5	-121.0	183.1	0.00	0.00	0.00	
2,200.0	22.21	221.35	2,166.0	-165.9	-146.0	220.9	0.00	0.00	0.00	
2,300.0	22.21	221.35	2,258.6	-194.3	-170.9	258.7	0.00	0.00	0.00	
2,400.0	22.21	221.35	2,351.2	-222.6	-195.9	296.5	0.00	0.00	0.00	
2,500.0	22.21	221.35	2,443.8	-251.0	-220.9	334.3	0.00	0.00	0.00	
Wasatch										
2,528.3	22.21	221.35	2,470.0	-259.0	-227.9	345.0	0.00	0.00	0.00	
2,600.0	22.21	221.35	2,536.4	-279.4	-245.8	372.1	0.00	0.00	0.00	
2,700.0	22.21	221.35	2,628.9	-307.8	-270.8	409.9	0.00	0.00	0.00	
2,800.0	22.21	221.35	2,721.5	-336.1	-295.8	447.7	0.00	0.00	0.00	
2,900.0	22.21	221.35	2,814.1	-364.5	-320.8	485.5	0.00	0.00	0.00	
3,000.0	22.21	221.35	2,906.7	-392.9	-345.7	523.3	0.00	0.00	0.00	
3,100.0	22.21	221.35	2,999.3	-421.3	-370.7	561.0	0.00	0.00	0.00	
3,200.0	22.21	221.35	3,091.8	-449.7	-395.7	598.8	0.00	0.00	0.00	
3,300.0	22.21	221.35	3,184.4	-478.0	-420.6	636.6	0.00	0.00	0.00	
3,400.0	22.21	221.35	3,277.0	-506.4	-445.6	674.4	0.00	0.00	0.00	
3,500.0	22.21	221.35	3,369.6	-534.8	-470.6	712.2	0.00	0.00	0.00	
3,600.0	22.21	221.35	3,462.2	-563.2	-495.6	750.0	0.00	0.00	0.00	
3,700.0	22.21	221.35	3,554.8	-591.5	-520.5	787.8	0.00	0.00	0.00	
3,800.0	22.21	221.35	3,647.3	-619.9	-545.5	825.6	0.00	0.00	0.00	
3,900.0	22.21	221.35	3,739.9	-648.3	-570.5	863.4	0.00	0.00	0.00	
4,000.0	22.21	221.35	3,832.5	-676.7	-595.4	901.2	0.00	0.00	0.00	
4,100.0	22.21	221.35	3,925.1	-705.1	-620.4	939.0	0.00	0.00	0.00	
4,200.0	22.21	221.35	4,017.7	-733.4	-645.4	976.8	0.00	0.00	0.00	
4,300.0	22.21	221.35	4,110.2	-761.8	-670.4	1,014.6	0.00	0.00	0.00	
4,400.0	22.21	221.35	4,202.8	-790.2	-695.3	1,052.4	0.00	0.00	0.00	
4,500.0	22.21	221.35	4,295.4	-818.6	-720.3	1,090.1	0.00	0.00	0.00	
4,600.0	22.21	221.35	4,388.0	-846.9	-745.3	1,127.9	0.00	0.00	0.00	

Database:	EDM 5000.1 Single User Db	Local Co-ordinate Reference:	Well BJU G35 FED 14C-35 496 - Slot BJU G35 FED 14C-35 496
Company:	Caerus Oil & Gas	TVD Reference:	RKB @ 8194.0usft (H&P#329)
Project:	Garfield County, CO	MD Reference:	RKB @ 8194.0usft (H&P#329)
Site:	NPM G35 496 Pad	North Reference:	True
Well:	BJU G35 FED 14C-35 496	Survey Calculation Method:	Minimum Curvature
Wellbore:	Wellbore #1		
Design:	Design #1		

Planned Survey

Measured Depth (usft)	Inclination (°)	Azimuth (°)	Vertical Depth (usft)	+N/-S (usft)	+E/-W (usft)	Vertical Section (usft)	Dogleg Rate (°/100usft)	Build Rate (°/100usft)	Turn Rate (°/100usft)
4,700.0	22.21	221.35	4,480.6	-875.3	-770.2	1,165.7	0.00	0.00	0.00
4,800.0	22.21	221.35	4,573.1	-903.7	-795.2	1,203.5	0.00	0.00	0.00
4,900.0	22.21	221.35	4,665.7	-932.1	-820.2	1,241.3	0.00	0.00	0.00
5,000.0	22.21	221.35	4,758.3	-960.5	-845.2	1,279.1	0.00	0.00	0.00
5,100.0	22.21	221.35	4,850.9	-988.8	-870.1	1,316.9	0.00	0.00	0.00
5,200.0	22.21	221.35	4,943.5	-1,017.2	-895.1	1,354.7	0.00	0.00	0.00
5,300.0	22.21	221.35	5,036.0	-1,045.6	-920.1	1,392.5	0.00	0.00	0.00
5,400.0	22.21	221.35	5,128.6	-1,074.0	-945.0	1,430.3	0.00	0.00	0.00
5,500.0	22.21	221.35	5,221.2	-1,102.3	-970.0	1,468.1	0.00	0.00	0.00
5,600.0	22.21	221.35	5,313.8	-1,130.7	-995.0	1,505.9	0.00	0.00	0.00
5,700.0	22.21	221.35	5,406.4	-1,159.1	-1,019.9	1,543.7	0.00	0.00	0.00
Wasatch G									
5,768.7	22.21	221.35	5,470.0	-1,178.6	-1,037.1	1,569.6	0.00	0.00	0.00
5,800.0	22.21	221.35	5,498.9	-1,187.5	-1,044.9	1,581.5	0.00	0.00	0.00
5,900.0	22.21	221.35	5,591.5	-1,215.9	-1,069.9	1,619.2	0.00	0.00	0.00
6,000.0	22.21	221.35	5,684.1	-1,244.2	-1,094.9	1,657.0	0.00	0.00	0.00
6,100.0	22.21	221.35	5,776.7	-1,272.6	-1,119.8	1,694.8	0.00	0.00	0.00
Fort Union									
6,119.8	22.21	221.35	5,795.0	-1,278.2	-1,124.8	1,702.3	0.00	0.00	0.00
6,200.0	22.21	221.35	5,869.3	-1,301.0	-1,144.8	1,732.6	0.00	0.00	0.00
6,300.0	22.21	221.35	5,961.8	-1,329.4	-1,169.8	1,770.4	0.00	0.00	0.00
6,400.0	22.21	221.35	6,054.4	-1,357.7	-1,194.7	1,808.2	0.00	0.00	0.00
6,500.0	22.21	221.35	6,147.0	-1,386.1	-1,219.7	1,846.0	0.00	0.00	0.00
6,600.0	22.21	221.35	6,239.6	-1,414.5	-1,244.7	1,883.8	0.00	0.00	0.00
6,700.0	22.21	221.35	6,332.2	-1,442.9	-1,269.7	1,921.6	0.00	0.00	0.00
6,800.0	22.21	221.35	6,424.7	-1,471.3	-1,294.6	1,959.4	0.00	0.00	0.00
6,900.0	22.21	221.35	6,517.3	-1,499.6	-1,319.6	1,997.2	0.00	0.00	0.00
7,000.0	22.21	221.35	6,609.9	-1,528.0	-1,344.6	2,035.0	0.00	0.00	0.00
7,100.0	22.21	221.35	6,702.5	-1,556.4	-1,369.5	2,072.8	0.00	0.00	0.00
7,200.0	22.21	221.35	6,795.1	-1,584.8	-1,394.5	2,110.6	0.00	0.00	0.00
7,300.0	22.21	221.35	6,887.7	-1,613.1	-1,419.5	2,148.3	0.00	0.00	0.00
7,400.0	22.21	221.35	6,980.2	-1,641.5	-1,444.5	2,186.1	0.00	0.00	0.00
Drop 3° /100'									
7,503.5	22.21	221.35	7,076.1	-1,670.9	-1,470.3	2,225.3	0.00	0.00	0.00
7,600.0	19.32	221.35	7,166.3	-1,696.6	-1,492.9	2,259.5	3.00	-3.00	0.00
7,700.0	16.32	221.35	7,261.5	-1,719.5	-1,513.1	2,290.0	3.00	-3.00	0.00
7,800.0	13.32	221.35	7,358.1	-1,738.7	-1,530.0	2,315.6	3.00	-3.00	0.00
7,900.0	10.32	221.35	7,456.0	-1,754.1	-1,543.5	2,336.1	3.00	-3.00	0.00
8,000.0	7.32	221.35	7,554.8	-1,765.6	-1,553.6	2,351.4	3.00	-3.00	0.00
8,100.0	4.32	221.35	7,654.3	-1,773.2	-1,560.3	2,361.5	3.00	-3.00	0.00
8,200.0	1.32	221.35	7,754.2	-1,776.9	-1,563.6	2,366.4	3.00	-3.00	0.00
EOD @ Vertical / Build 1.5° / 100' - Ohio Creek - TOG									
8,243.9	0.00	0.00	7,798.0	-1,777.3	-1,563.9	2,366.9	3.00	-3.00	0.00
8,300.0	0.84	250.17	7,854.1	-1,777.4	-1,564.3	2,367.3	1.50	1.50	0.00
EOB @ 1.54° Inc. / 250.17° Azm									
8,346.7	1.54	250.17	7,900.8	-1,777.7	-1,565.2	2,368.2	1.50	1.50	0.00
8,400.0	1.54	250.17	7,954.1	-1,778.2	-1,566.6	2,369.4	0.00	0.00	0.00
Williams Fork									
8,488.9	1.54	250.17	8,043.0	-1,779.0	-1,568.8	2,371.6	0.00	0.00	0.00
8,500.0	1.54	250.17	8,054.1	-1,779.1	-1,569.1	2,371.8	0.00	0.00	0.00
8,600.0	1.54	250.17	8,154.0	-1,780.1	-1,571.6	2,374.2	0.00	0.00	0.00
8,700.0	1.54	250.17	8,254.0	-1,781.0	-1,574.2	2,376.6	0.00	0.00	0.00

Database:	EDM 5000.1 Single User Db	Local Co-ordinate Reference:	Well BJU G35 FED 14C-35 496 - Slot BJU G35 FED 14C-35 496
Company:	Caerus Oil & Gas	TVD Reference:	RKB @ 8194.0usft (H&P#329)
Project:	Garfield County, CO	MD Reference:	RKB @ 8194.0usft (H&P#329)
Site:	NPM G35 496 Pad	North Reference:	True
Well:	BJU G35 FED 14C-35 496	Survey Calculation Method:	Minimum Curvature
Wellbore:	Wellbore #1		
Design:	Design #1		

Planned Survey									
Measured Depth (usft)	Inclination (°)	Azimuth (°)	Vertical Depth (usft)	+N/-S (usft)	+E/-W (usft)	Vertical Section (usft)	Dogleg Rate (°/100usft)	Build Rate (°/100usft)	Turn Rate (°/100usft)
8,800.0	1.54	250.17	8,354.0	-1,781.9	-1,576.7	2,379.0	0.00	0.00	0.00
8,900.0	1.54	250.17	8,453.9	-1,782.8	-1,579.2	2,381.3	0.00	0.00	0.00
9,000.0	1.54	250.17	8,553.9	-1,783.7	-1,581.8	2,383.7	0.00	0.00	0.00
9,100.0	1.54	250.17	8,653.9	-1,784.6	-1,584.3	2,386.1	0.00	0.00	0.00
9,200.0	1.54	250.17	8,753.8	-1,785.5	-1,586.8	2,388.5	0.00	0.00	0.00
9,300.0	1.54	250.17	8,853.8	-1,786.5	-1,589.4	2,390.9	0.00	0.00	0.00
9,400.0	1.54	250.17	8,953.8	-1,787.4	-1,591.9	2,393.3	0.00	0.00	0.00
9,500.0	1.54	250.17	9,053.7	-1,788.3	-1,594.4	2,395.7	0.00	0.00	0.00
9,600.0	1.54	250.17	9,153.7	-1,789.2	-1,597.0	2,398.0	0.00	0.00	0.00
9,700.0	1.54	250.17	9,253.6	-1,790.1	-1,599.5	2,400.4	0.00	0.00	0.00
9,800.0	1.54	250.17	9,353.6	-1,791.0	-1,602.0	2,402.8	0.00	0.00	0.00
9,900.0	1.54	250.17	9,453.6	-1,791.9	-1,604.6	2,405.2	0.00	0.00	0.00
10,000.0	1.54	250.17	9,553.5	-1,792.8	-1,607.1	2,407.6	0.00	0.00	0.00
10,100.0	1.54	250.17	9,653.5	-1,793.8	-1,609.6	2,410.0	0.00	0.00	0.00
10,200.0	1.54	250.17	9,753.5	-1,794.7	-1,612.1	2,412.3	0.00	0.00	0.00
10,300.0	1.54	250.17	9,853.4	-1,795.6	-1,614.7	2,414.7	0.00	0.00	0.00
10,400.0	1.54	250.17	9,953.4	-1,796.5	-1,617.2	2,417.1	0.00	0.00	0.00
10,500.0	1.54	250.17	10,053.4	-1,797.4	-1,619.7	2,419.5	0.00	0.00	0.00
10,600.0	1.54	250.17	10,153.3	-1,798.3	-1,622.3	2,421.9	0.00	0.00	0.00
10,700.0	1.54	250.17	10,253.3	-1,799.2	-1,624.8	2,424.3	0.00	0.00	0.00
10,800.0	1.54	250.17	10,353.2	-1,800.2	-1,627.3	2,426.6	0.00	0.00	0.00
10,900.0	1.54	250.17	10,453.2	-1,801.1	-1,629.9	2,429.0	0.00	0.00	0.00
11,000.0	1.54	250.17	10,553.2	-1,802.0	-1,632.4	2,431.4	0.00	0.00	0.00
11,100.0	1.54	250.17	10,653.1	-1,802.9	-1,634.9	2,433.8	0.00	0.00	0.00
11,200.0	1.54	250.17	10,753.1	-1,803.8	-1,637.5	2,436.2	0.00	0.00	0.00
Cameo									
11,203.9	1.54	250.17	10,757.0	-1,803.8	-1,637.6	2,436.3	0.00	0.00	0.00
11,300.0	1.54	250.17	10,853.1	-1,804.7	-1,640.0	2,438.6	0.00	0.00	0.00
11,400.0	1.54	250.17	10,953.0	-1,805.6	-1,642.5	2,440.9	0.00	0.00	0.00
11,500.0	1.54	250.17	11,053.0	-1,806.6	-1,645.1	2,443.3	0.00	0.00	0.00
11,600.0	1.54	250.17	11,153.0	-1,807.5	-1,647.6	2,445.7	0.00	0.00	0.00
11,700.0	1.54	250.17	11,252.9	-1,808.4	-1,650.1	2,448.1	0.00	0.00	0.00
11,800.0	1.54	250.17	11,352.9	-1,809.3	-1,652.7	2,450.5	0.00	0.00	0.00
Rollins									
11,806.1	1.54	250.17	11,359.0	-1,809.3	-1,652.8	2,450.6	0.00	0.00	0.00
11,900.0	1.54	250.17	11,452.8	-1,810.2	-1,655.2	2,452.9	0.00	0.00	0.00
TD @ 12006.2' MD / 11559.0' TVD									
12,006.2	1.54	250.17	11,559.0	-1,811.2	-1,657.9	2,455.4	0.00	0.00	0.00

Design Targets									
Target Name	- hit/miss target	Dip Angle (°)	Dip Dir. (°)	TVD (usft)	+N/-S (usft)	+E/-W (usft)	Northing (usft)	Easting (usft)	
	- Shape								Latitude Longitude
OHCR - BJ G35 14C-	- plan hits target center	0.00	0.00	7,798.0	-1,777.3	-1,563.9	14,413,426.68	2,445,593.95	39.655473 -108.139513
	- Point								
PBHL - BJ G35 14C-	- plan hits target center	0.00	0.00	11,559.0	-1,811.2	-1,657.9	14,413,389.80	2,445,501.10	39.655380 -108.139847
	- Ellipse (radii L100.0 W50.0 on 250.00 azi)								

Database:	EDM 5000.1 Single User Db	Local Co-ordinate Reference:	Well BJU G35 FED 14C-35 496 - Slot BJU G35 FED 14C-35 496
Company:	Caerus Oil & Gas	TVD Reference:	RKB @ 8194.0usft (H&P#329)
Project:	Garfield County, CO	MD Reference:	RKB @ 8194.0usft (H&P#329)
Site:	NPM G35 496 Pad	North Reference:	True
Well:	BJU G35 FED 14C-35 496	Survey Calculation Method:	Minimum Curvature
Wellbore:	Wellbore #1		
Design:	Design #1		

Formations						
Measured Depth (usft)	Vertical Depth (usft)	Name	Lithology	Dip (°)	Dip Direction (°)	
2,528.3	2,470.0	Wasatch				
5,768.7	5,470.0	Wasatch G				
6,119.8	5,795.0	Fort Union				
8,243.9	7,798.0	Ohio Creek				
8,243.9	7,798.0	TOG				
8,488.9	8,043.0	Williams Fork				
11,203.9	10,757.0	Cameo				
11,806.1	11,359.0	Rollins				

Plan Annotations					
Measured Depth (usft)	Vertical Depth (usft)	Local Coordinates			
		+N/-S (usft)	+E/-W (usft)	Comment	
1,250.0	1,250.0	0.0	0.0	Build 3° / 100'	
1,990.3	1,971.9	-106.4	-93.6	EOB @ 22.21° Inc. / 221.35° Azm	
7,503.5	7,076.1	-1,670.9	-1,470.3	Drop 3° / 100'	
8,243.9	7,798.0	-1,777.3	-1,563.9	EOD @ Vertical / Build 1.5° / 100'	
8,346.7	7,900.8	-1,777.7	-1,565.2	EOB @ 1.54° Inc. / 250.17° Azm	
12,006.2	11,559.0	-1,811.2	-1,657.9	TD @ 12006.2' MD / 11559.0' TVD	