



# Kerr-McGee Oil & Gas Onshore LP

A subsidiary of Anadarko Petroleum Corporation

1099 18<sup>th</sup> Street  
Denver, CO 80202  
720-929-6000

September 9, 2019

Jeff Robbins  
Director, Colorado Oil and Gas Conservation Commission  
Department of Natural Resources – The Chancery Building  
1120 Lincoln Street, Suite 801  
Denver, CO 80203

Re: **30 Day Certification Letter - 318A.e**  
CUMMINGS 19-13HZ (Doc No. 402031843)  
Township 5 North, Range 67 West  
Section 19: SWNW  
Unit Acreage: 800 Acres  
Proposed Spacing Unit:  
05N68W SEC 24: SENE, NESE;  
05N67W SEC 19: S2N2, N2S2;  
05N67W SEC 20: S2N2, N2S2;  
05N67W SEC 21: SWNW, NWSW  
Weld County, Colorado

Dear Director Robbins:

Kerr-McGee Oil and Gas Onshore LP (“KMG”) hereby certifies that a thirty (30) day notice has been given by certified mail to all mineral owners in the proposed wellbore spacing unit. We have not received any objections to such well location, proposed spacing unit, or additional producing formation. KMG hereby respectfully requests approval of this boundary well.

If you have any questions or issues regarding this permit, please contact me at (720) 929-3242.

Sincerely,

**Kerr-McGee Oil and Gas Onshore LP**

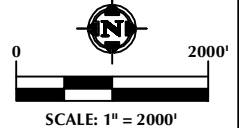
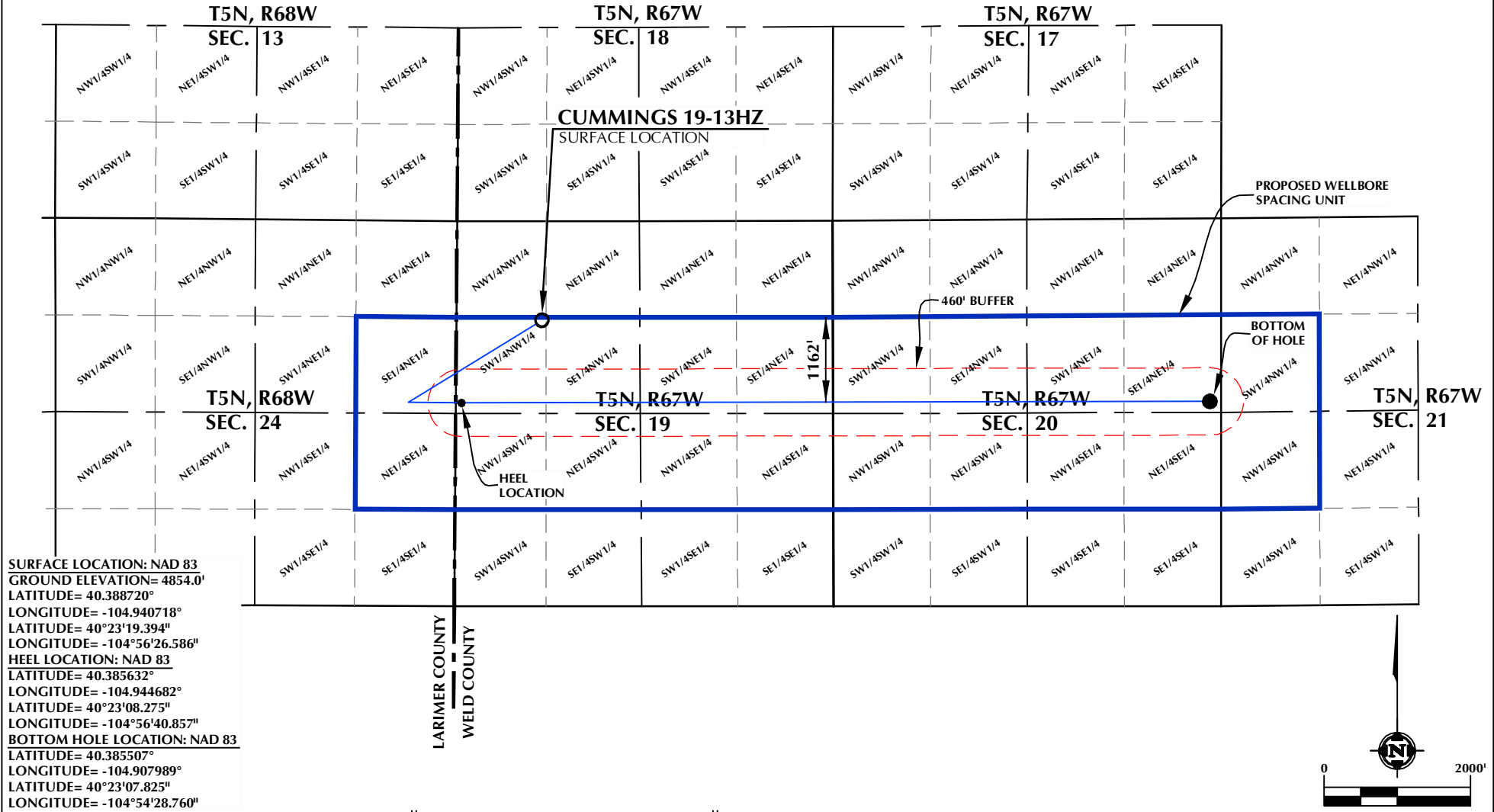
A handwritten signature in black ink, appearing to be 'EH' or similar initials, written in a cursive style.

Erin Hampe  
Regulatory Analyst

Enclosure

DISTANCE FROM COMPLETED  
PORTION OF WELLBORE TO  
NEAREST UNIT BOUNDARY= 1162'

## CUMMINGS 19-13HZ WELLBORE SPACING UNIT



### WELL PAD - CUMMINGS 18-19HZ

CUMMINGS 19-13HZ  
WELLBORE SPACING UNIT  
1355' FNL & 1165' FWL LOT 2 (SWNW) (SURFACE)  
2486' FNL & 75' FWL LOT 2 (SWNW) (HEEL)  
LOCATED IN SECTION 19  
2506' FNL & 150' FEL SENE (BOTTOM)  
LOCATED IN SECTION 20  
T5N, R67W, 6TH P.M.  
WELD COUNTY, COLORADO

**Kerr-McGee Oil &  
Gas Onshore L.P.**  
**1099 18th Street  
Denver, Colorado 80202**



### CONSULTING, LLC

**SHERIDAN OFFICE**  
1095 Saberton Avenue  
Sheridan, Wyoming 82801  
Phone 307-674-0609

**LOVELAND OFFICE**  
6706 North Franklin Avenue  
Loveland, Colorado 80538  
Phone 970-776-4331

DRAFTED BY:	LMO	CHECKED BY:	RKF
DATE DRAFTED:	4/26/19	DATE SURVEYED:	3/20/19
REVISED:		FILE NAME:	18-159

### NOTES:

1. DRAWING LATITUDE AND LONGITUDE COORDINATES ARE NAD 83 (2011)(EPOCH:2010).
2. ELEVATION BASED ON NAVD88 (GEOID12B).
3. BASIS OF BEARING DERIVED FROM COLORADO COORDINATE SYSTEM OF 1983 NORTH ZONE.
4. ALL MEASURED DISTANCES ARE GRID. COMBINED SCALE FACTOR: .99972932 CALCULATED FROM THE NW. CORNER OF SECTION 19, T5N, R67W.