

File in triplicate on Fee and Patented lands and in quadruplicate on State and School lands, with

OFFICE OF DIRECTOR

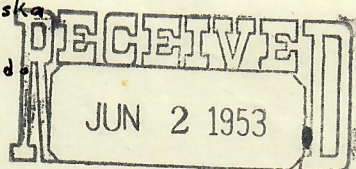
OIL AND GAS CONSERVATION  
STATE OF COLORADO

Locate  
Well  
Correctly

Nebraska

Colorado

12N



## LOG OF OIL AND GAS WELL

OIL & GAS  
CONSERVATION COMMISSIONField LongCounty WeldLease Ella LongWell No. 1 Sec. 24 Twp. 12N Rge. 56W Meridian 6th P.M. State CO Pat.Location 330 (N) Ft. (S) of S Line and 990 (E) Ft. (W) of W line of NW 1/4 Elevation 4921 D.F.  
(Derrick floor relative to sea level)

The information given herewith is a complete and correct record of the well and all work done thereon so far as can be determined from all available records.

Signed

R. C. ListerDate June 1, 1953Title General Superintendent

The summary on this page is for the condition of the well as above date.

Commenced drilling 3/9, 1953 Finished drilling 3/29, 1953

## OIL AND GAS SANDS OR ZONES

No. 1, from 6171 to 6185 No. 4, from \_\_\_\_\_ to \_\_\_\_\_  
No. 2, from 6304 to 6309 No. 5, from \_\_\_\_\_ to \_\_\_\_\_  
No. 3, from \_\_\_\_\_ to \_\_\_\_\_ No. 6, from \_\_\_\_\_ to \_\_\_\_\_

## IMPORTANT WATER SANDS

No. 1, from \_\_\_\_\_ to \_\_\_\_\_ No. 3, from \_\_\_\_\_ to \_\_\_\_\_  
No. 2, from \_\_\_\_\_ to \_\_\_\_\_ No. 4, from \_\_\_\_\_ to \_\_\_\_\_

## CASING RECORD

SIZE	WT. PER FOOT	MAKE	WHERE LANDED	NO. OF SKS. CEMENT	STOOD HOURS	PRESSURE TEST PSI
10-3/4	29#	Armco	534' K.B.	300sx	24	None
5 1/2	15.5#	J&L	6361' K.B.	200sx	72	None

## COMPLETION DATA

Total Depth 6361 ft. Cable Tools from \_\_\_\_\_ to \_\_\_\_\_ Rotary Tools from 0 to 6361  
Casing Perforations (prod. depth) from 6153'-6184' to 6304'-6307' ft. No. of holes 69  
Acidized with \_\_\_\_\_ gallons. Other physical or chemical treatment of well to induce flow Strata-frac "J" sand  
Shooting Record \_\_\_\_\_

Prod. began May 22 19 53 Making 12 bbls./day of 40 A. P. I. Gravity Fluid on \_\_\_\_\_ Pump ☒  
Tub. Pres. 10 lbs./sq. in. Csg. Pres. 10 lbs./sq. in. Gas Vol. 2 Mcf. Gas Oil Ratio 166 Choke. ☐  
Length Stroke 64 in. Strokes per Min. 11 Diam. Pump 1 1/2 in.  
B. S. & W. 80 % Gas Gravity 0.8 BTU's/Mcf. \_\_\_\_\_ Gals. Gasoline/Mcf. \_\_\_\_\_

## WELL DATA

Indicate (yes or no) whether or not the following information was obtained.

Electrical Log Yes Date 3/28 19 53Gamma Ray Yes Date 4/6 19 53Time Drilling Record PartialCore Analysis Yes Depth 6155 to 61856304 to 6338

Straight Hole Survey \_\_\_\_\_ Type \_\_\_\_\_

Other Types of Hole Survey \_\_\_\_\_ Type \_\_\_\_\_

(Note—Any additional data can be shown on reverse side.)

## FORMATION RECORD

Show all formations, especially all sands and character and contents thereof.

FORMATION	TOP	BOTTOM	REMARKS
Niobrara	5336	5617	
Timpas	5617	5666	
Codell	5674	5685	
Green Horn	5872	5890	
"D" Sand	6155	6187	Oil & water
"J" Sand	6267	6345	Oil & Water

(Continue on reverse side)



STATE OF COLORADO  
OIL AND GAS CONSERVATION COMMISSION  
OFFICE OF DIRECTOR  
Petroleum Engineers and Geologists  
Petroleum Engineers and Geologists

LOG OF OIL AND GAS WELL

RECEIVED  
JUN 2 1953

CONSERVATION COMMISSION

Locate Well Correctly


J. M. Huber Corporation  
Box 101, Fort Collins, Texas

Field Name  
County  
Lease  
Well No.

Location

The information given is determined from all available

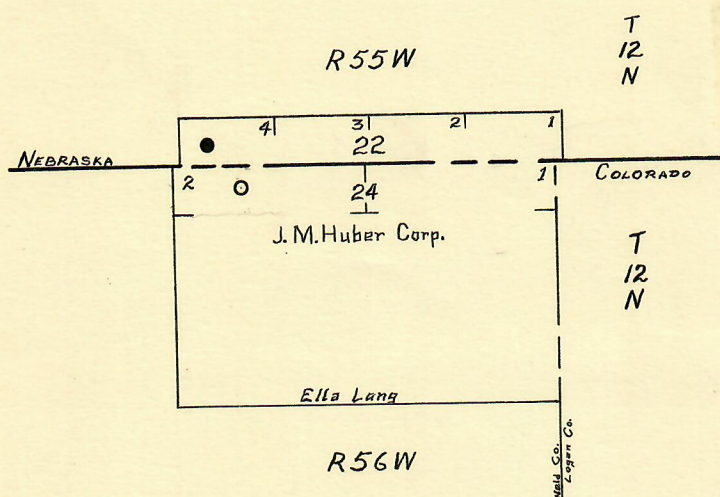
Date June 1, 1953  
The summary on this page  
Commenced drilling

No. 1 from  
No. 2 from  
No. 3 from

No. 1 from  
No. 2 from

WT	SIZE

Total Depth  
Casing Perforations (Depth)  
Address with  
Shooting Record  
Prod began  
Top Press  
Length Stroke  
R. & W.



SCALE: 2" = 1 MILE

Location J.M. Huber's #1 Ella Lang  
330' N/S LINE, 990' E/W LINE, NW 1/4, Sec 24

J. M. Huber Corporation  
DENVER, COLORADO

Indicate (yes or no) whether or not the following information was obtained.

Stratigraphic Hole Survey	Yes	3/28
Other Types of Hole Survey	Yes	1/2
(Note—Any additional data can be shown on reverse side)		
Time Drilling Record	Yes	3/28
Core Analysis	Yes	3/28

FORMATION RECORD

Show all formations, especially all sands and shales and contents thereof.

FORMATION	TOP	BOTTOM	REMARKS
Nebraska	5330	5517	
Timber	5517	5550	
Codell	5550	5574	
Green Horn	5574	5590	
W. Sand	5590	5617	Oil & water
W. Sand	5617	5637	Oil & water

(Continue on reverse side)