



Holloway & Holloway, Inc.
P.O. Box 3331
Greeley, CO 80633
(303) 867-3715
(303) 352-5852



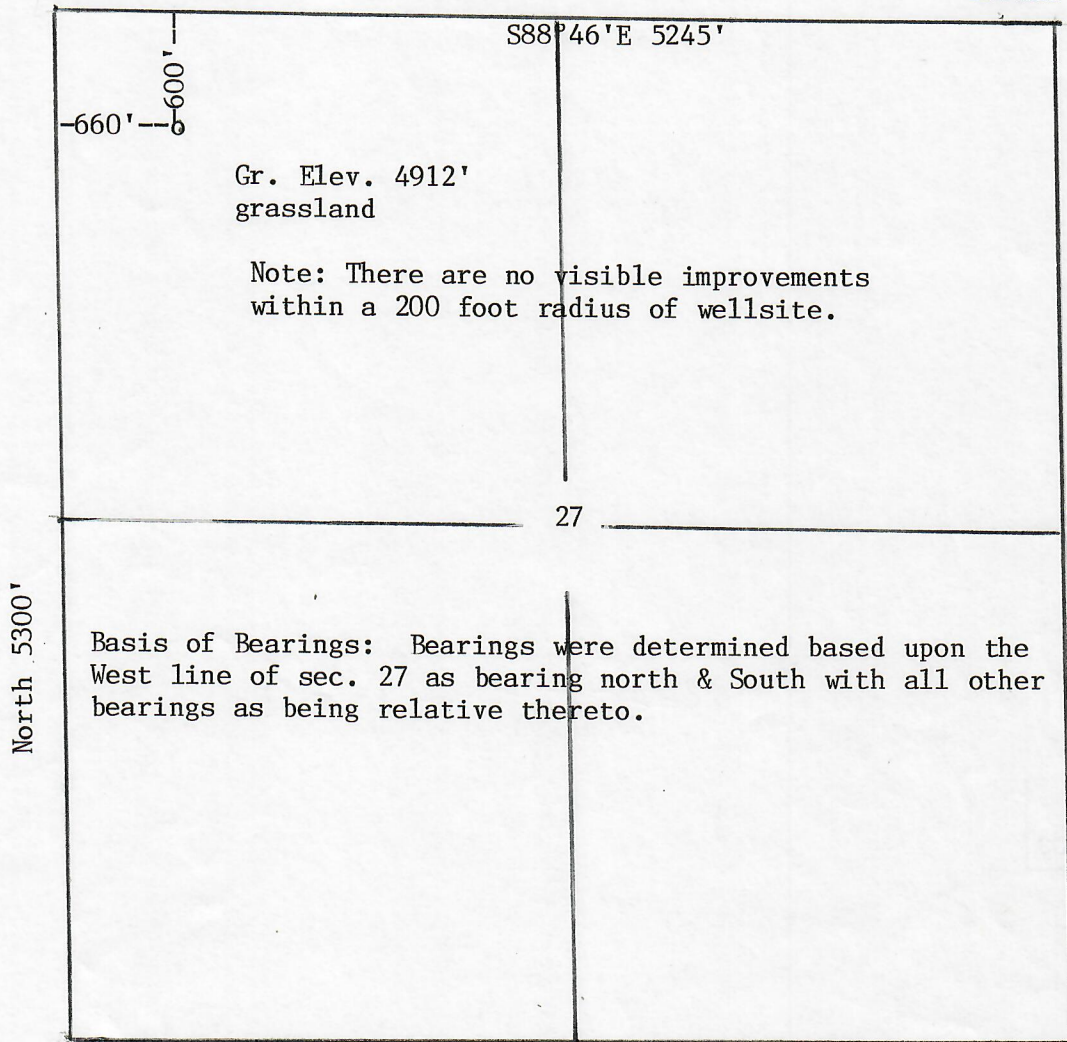
R56W

NE cor. fence
corner S&W

N



NW cor. fence
corner E&W&S
Basis of elev
spot elev at
NW cor. 4901'



SW cor. fence
corner N&E

AUG - 9 1999

Scale - - - 1" = 1000'



In accordance with a request from Advantage Resources, Inc.
the Undersigned has
determined the location of the Sheffler 4-27 well

to be 600'FNL & 660'FWL at right angles as co-ordinates

Section 27 Township 12N Range 56W of the 6th principal Meridian

Weld County, Colorado.

I hereby certify,
that this oil and/or gas well location certificate was prepared for
that it is not a land survey plat or improvement survey plat and that it is not to be relied upon for the
establishment of fence, building or other future improvement lines

Advantage Resources, Inc.

Date 7-29-99

Billy S. Holloway

Holloway & Holloway, Inc.

States of

Colorado

