

Inspection Photos
Location Name: Simonsen-Schaefer 6L-HZ Pad
Location ID: 430787



Photo 1: Wellhead Sign

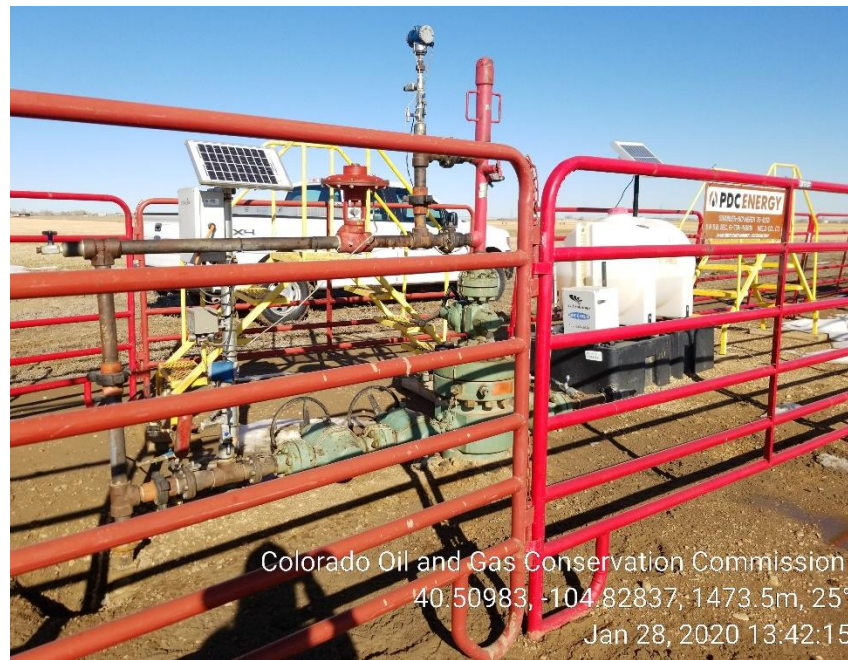


Photo 2: Wellhead

Inspection Photos

Location Name: Simonsen-Schaefer 6L-HZ Pad

Location ID: 430787



Photo 3: Wellhead Sign



Photo 4: Wellhead

Inspection Photos

Location Name: Simonsen-Schaefer 6L-HZ Pad

Location ID: 430787



Photo 5: Wellhead Sign



Photo 6: Wellhead

Inspection Photos

Location Name: Simonsen-Schaefer 6L-HZ Pad

Location ID: 430787



Colorado Oil and Gas Conservation Commission
40.50984, -104.82802, 1470.6m, 358°
Jan 28, 2020 13:43:34

Photo 7: Wellhead Sign



Colorado Oil and Gas Conservation Commission
40.50985, -104.82807, 1471.5m, 35°
Jan 28, 2020 13:43:49

Photo 8: Wellhead

Inspection Photos

Location Name: Simonsen-Schaefer 6L-HZ Pad

Location ID: 430787



Colorado Oil and Gas Conservation Commission
40.50986, -104.82795, 1471.6m, 1°
Jan 28, 2020 13:44:03

Photo 9: Wellhead Sign



Colorado Oil and Gas Conservation Commission
40.50986, -104.82797, 1470.8m, 34°
Jan 28, 2020 13:44:14

Photo 10: Wellhead

Inspection Photos
Location Name: Simonsen-Schaefer 6L-HZ Pad
Location ID: 430787



Photo 11: Tank Battery



Photo 12: Unused Equipment



Inspection Photos
Location Name: Simonsen-Schaefer 6L-HZ Pad
Location ID: 430787



Photo 13: Trash

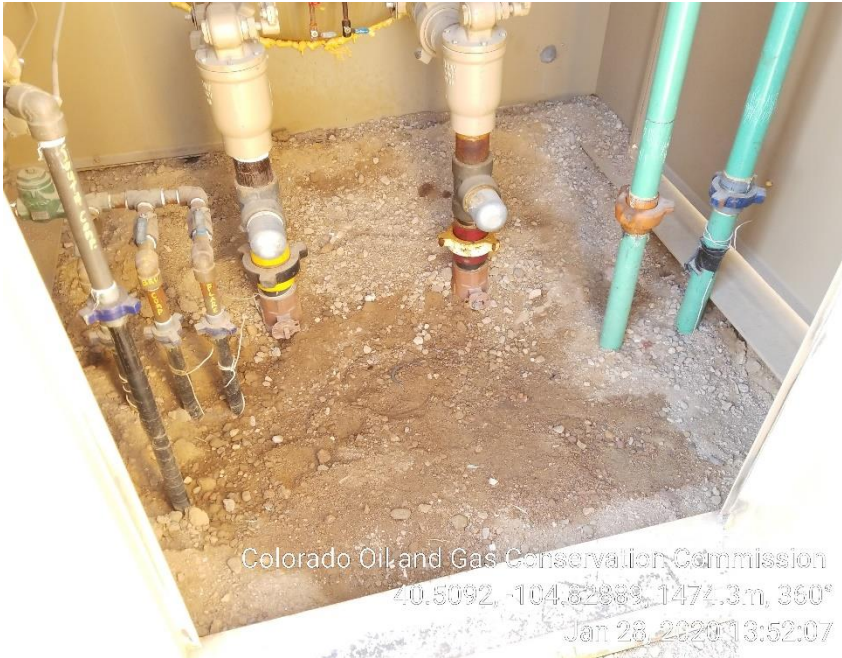


Photo 14: Trash

Inspection Photos

Location Name: Simonsen-Schaefer 6L-HZ Pad

Location ID: 430787



Colorado Oil and Gas Conservation Commission
40.5092, -104.8288, 1471.3m, 360°
Jan 28, 2020 13:52:07

Photo 15: Stained soil



Colorado Oil and Gas Conservation Commission
40.50922, -104.82921, 1471.8m, 72°
Jan 28, 2020 13:56:16

Photo 16: Separator with stained soil



COLORADO
Oil & Gas Conservation
Commission
Department of Natural Resources